

# At Last

Rubato

F F7/E $\flat$  B $\flat$ /D Bdim F F7/E $\flat$  D $\flat$  C9

9 F Dm Gm C FMaj7 D9 D $\flat$ M9 C9

13 F Dm Gm C F B $\flat$  F F7

17 Gm C7 F E F E Am

21 Dm G7 C7 C $\sharp$ dim7 Dm G7 C7 C7sus4 C7

25 F Dm Gm C F Dm Gm C

29 Drum Fill F F7/E $\flat$  Bdim7 F F7/E $\flat$  D $\flat$  C9 F

MM 130-132

Swing 8ths

# Moondance

Van Morrison

Intro    Amin7    Bmin7    Amin7    Bmin7    Amin7    Bmin7    Amin/C    Bmin7

Verse    Amin7    Bmin7    Amin7    Bmin7    Amin7    Bmin7    Amin/C    Bmin7

5

Amin7    Bmin7    Amin7    Bmin7    Amin7    Bmin7    Amin/C    Bmin7

9

Bridge    D-7    A-7    D-7    A-7

13

D-7    A-7    D-7    E7#9

17

Chorus

21

E7#9

25

# Amazed

Lone Star  
Copyright © 2004 by James Hylands

Guitar

*INTRO*

*Verse*

1      Ab      Ab      Ab      Ab      Ab      Eb      Fm

*Bridge*

8      Db Dbsus2      Ab      Eb      Fm      Db Dbsus2      B      Gb

*XTRUS*

15      Abm      E      Db      Ab      Bbm      Gb      Db

*II*

22      Ab      Bbm      Gb      E      Gb      Ab      Ab

*12*

*GT SOLO*

29      Ab      Db      F#      Ab      Bbm      Gb      Db

*PLAY NOTES  
2ND TIME*

36      Ab      Bbm      Gb      E      Gb      Ab

*Rst.*

*4meas.*

# It Had To Be You

Harry Connick Jr  
Copyright © 2003 by James Hylands

Guitar

1

Fmaj7 5 fr. C+ 5 fr. Fmaj7 5 fr. D7 7 fr. D6 7 fr. D7 5 fr. G9 5 fr.

6

G9 5 fr. G9 5 fr. G9 5 fr. C13 8 fr. A13 5 fr. Dm7 5 fr. Dm7 5 fr.

13

G13 8 fr. G13 8 fr. C9 C9 C+ Gm7 10 fr. Eb7

19

Am7 5 fr. A7 5 fr. Dm7 8 fr. Dm7b5 6 fr. C7 5 fr. B7 C7 3 fr. F 6 fr.

24

G7 6 fr. Abmaj7 12 fr. Bbm7b5 6 fr. Am7b5 5 fr. Am7b5 5 fr.

29

**B $\flat$ 7** 6 fr. **B7** 7 fr. **B $\flat$ 7** 6 fr. **Am7** 5 fr. **B $\flat$ m7** 6 fr.

33

**E $\flat$ 9** 6 fr. **A $\flat$ M $\flat$ 5** 3 fr. **B $\flat$ 13** 8 fr. **B13** 9 fr. **B $\flat$ 13** 8 fr. **E9** 7 fr.

38

**B $\flat$ m7** 6 fr. **C7** 3 fr. **Fmaj7** 9 fr. **E $\flat$ maj7** 7 fr. **D7** 5 fr. **D7** 5 fr. **G7** 6 fr.

44

**F** 6 fr. **F+** 6 fr. **Bdim** 6 fr. **B $\flat$**  6 fr. **B $\flat$ 7** 6 fr. **F** 6 fr. **E $\flat$ 7** 6 fr.

50

**D9** 5 fr. **D9** 5 fr. **G7** **C9**

53

# My Funny Valentine

Richard Rodgers  
Copyright © 2004 by James Hylands

Guitar

Sax  
F2 solo 16 bars

1 Cm7 Cm7/B Cm7/Bb Cm7/A

7 Abmaj7 Fm7 Fm6/D G7b9 Cm7 Cm7/B Cm7/Bb

Bridge

14 Cm7/A Abmaj7 Fm7 Abm13 Bb7#5b9 Eb9 Fm7/Eb

20 Gm7/F Fm7/Eb Eb9 Fm7/Eb Gm7/F Fm7/Eb Eb9 G7/D Eb6 Abmaj7

26 Dm7b5 G7b9 Cm7 Cm7/B Cm7/Bb Cm7/A Abmaj7

32 D7b5 G7b9 Cm7 Bbm7 A9 Abmaj7 Fm7 Ddim7 Eb6 D7b5 G7b9

77 | C - D | 78 | Eb 6 |

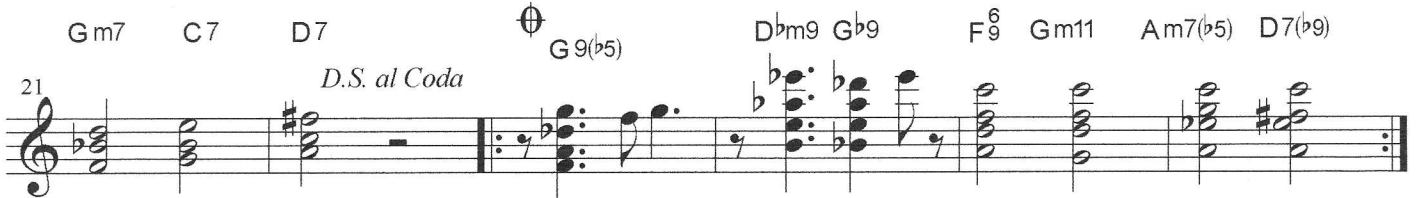
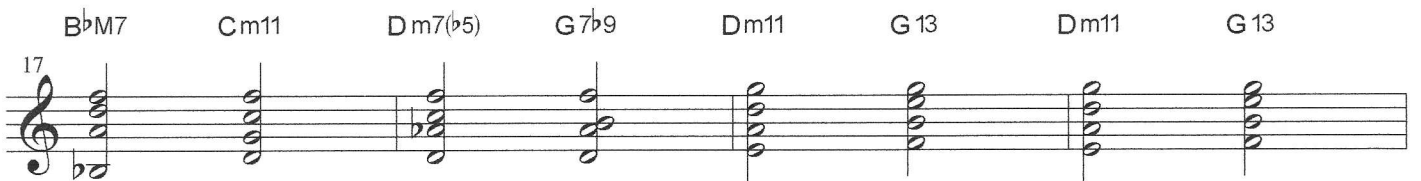
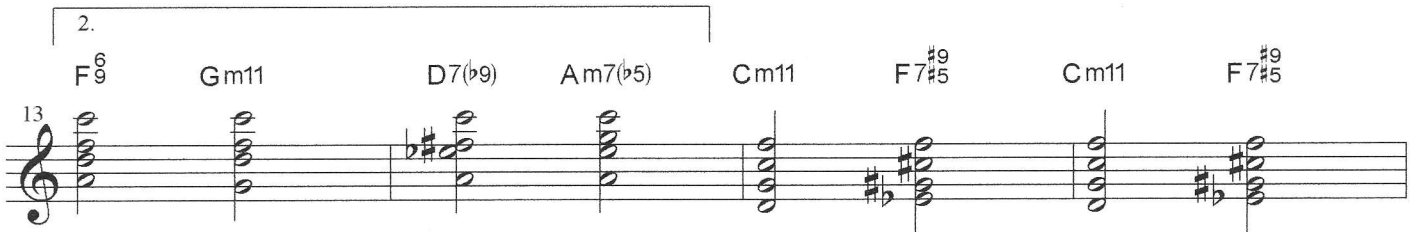
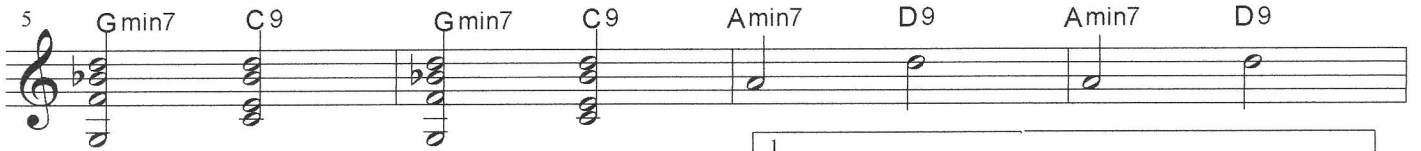
# Satin Doll

Duke Ellington



§

To Coda



*D.S. al Coda*



THE WAY YOU LOOK TONIGHT

PG-2

E<sup>b</sup>6 E<sup>b</sup>6 E<sup>b</sup>7 A<sup>b</sup>13 F-11 E<sup>b</sup>6 B<sup>b</sup>7

E<sup>b</sup>6 E<sup>b</sup>6

G<sup>b</sup>A7 B<sup>b</sup>-6 A<sup>b</sup>-9 D<sup>b</sup>7

G<sup>b</sup>A7 B<sup>b</sup>-6 D<sup>b</sup>9 D<sup>b</sup>9

G<sup>b</sup>A7 B<sup>b</sup>-6 A<sup>b</sup>-9 D<sup>b</sup>7

G<sup>b</sup>A7 E<sup>b</sup>-7 F-9 B<sup>b</sup>13

V E49 C#-7 F#-9 F#-9 B7

G#-7 G#-7<sup>b</sup>5 C#7 F#-7 F#-7 B7

E6 E6 E7 A13 F#-11 E6 B7

E49 C#-7 F#-9 B7 E49 C#-7 F#-9 B7

LARGE

A13 F#-11 E6 B7 E49 Rit. E49



IBM-EE-47

IBM-EE-47



# THE WAY YOU LOOK TONIGHT



Handwritten musical notation for the song "The Way You Look Tonight". The notation is organized into systems of staves, with chord names and fingerings indicated.

**System 1:**

- Staff 1: EbA9, C-7, F-9, F-9, Bb7
- Staff 2: EbA9, C-7, F-9, F-9, Bb7

**System 2:**

- Staff 3: G-7, G-7b5, C7, F-7, F-7, Bb7
- Staff 4: Eb6, Eb6, Eb7, Ab13, F-11, Eb6, Bb7

**System 3:**

- Staff 5: EbA9, C-7, F-9, Bb7, EbA9, C-7, F-9, Bb7

**System 4:**

- Staff 6: GbA7, Bb-6, Ab-9, Db7
- Staff 7: GbA7, Bb-6, Ab-9, Db7

**System 5:**

- Staff 8: GbA7, Eb-7, Bb13/Eb, Bb13
- Staff 9: EbA9, C-7, F-9, F-9, Bb7

**System 6:**

- Staff 10: G-7, G-7b5, C7, F-7, F-7, Bb7

# Walking After Midnight

Patsy Kline  
Copyright © 2004 by James Hylands

Guitar

*INTRO*

1 C G# G C

*Verse*

4 G# G C C F Dm G C

10 Fm G C C C C F Dm G

*Bridge*

17 C Fm G C C F F C

*Verse*

24 C7 F Fm C Dm G C C

31 F Dm G C Fm G C C

*GT SOLO over V / Bridge / Verse / INTRO*

# Crazy

Patsy Cline  
Copyright © 2004 by James Hylands

Guitar

1 B $\flat$  E $\flat$  E $\flat$  Dm

4 Cm F F+ B $\flat$  A $\flat$  G Cm G Cm F F F+

11 B $\flat$  Bdim Cm F F+ B $\flat$  Cm C#dim B $\flat$ /D E $\flat$  E $\flat$  C7/E B $\flat$

18 B $\flat$  A B $\flat$  B C C F B $\flat$  A $\flat$

24 G Cm G Cm E $\flat$  Dm Cm Bdim Cm F7 B $\flat$  F#

31 B A G# C#m G# C#m E D#m C#m Cdim C#m F#7

F#7

B

E

B

38

A musical staff in treble clef with a key signature of one sharp (F#). The staff contains six measures. The first two measures are whole rests. The third measure begins with a treble clef, a sharp sign, and a quarter note on G4. The fourth measure contains a quarter note on A4, a quarter note on B4, and a quarter note on C5, all beamed together under a triplet bracket with the number '3' above it. The fifth measure contains a quarter note on B4, a quarter note on A4, and a quarter note on G4, all beamed together. The sixth measure is a whole rest. The staff ends with a double bar line.

Key of F

# Wonderful World

L Armstrong

F Gmin7 F B $\flat$ 6 F Amin B $\flat$  Amin Gmin7 F A7 Dmin

Verse

C# C9 C7 F F $\sharp$ aug B $\flat$  C7 F B $\flat$  F

7

C7 F C7 F Dmin C/E Dmin C/E

13 Bridge

Dmin7 F#dim7 Gmin7 C7 F Amin B $\flat$  Amin Gmin7 F A7 Dmin

19 Verse

C# C9 C7 F Am7(b5) D7 Gmin C

25

F B $\flat$ 6 B $\flat$

31