



Grade A
Arlo

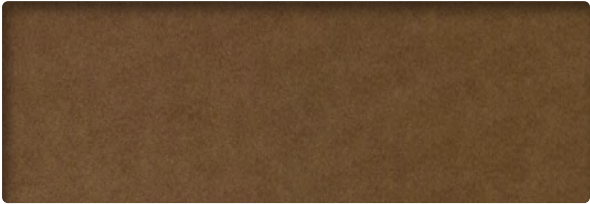
CRANBERRY
AR14



PETROL
AR306



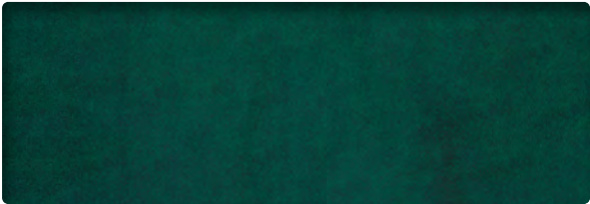
MIDNIGHT
AR308



NUTMEG
AR84



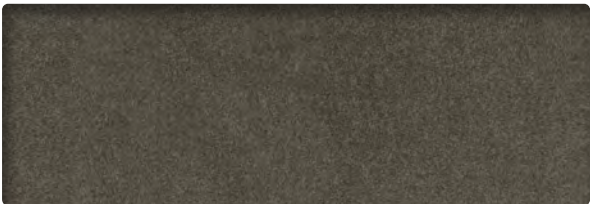
TRUFFLE
AR82



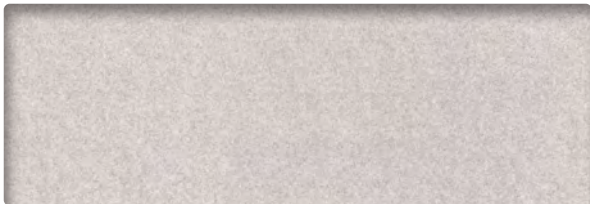
MERMAID
AR205



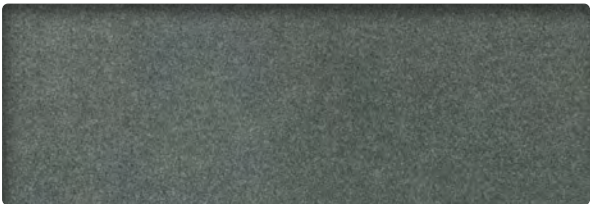
FLAX
AR96



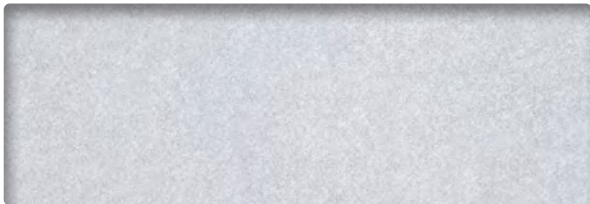
MUSHROOM
AR603



PEARL
AR601




CHARCOAL
AR908



SILVER
AR91


INFORMATION TECHNIQUE

Patron - Largeur	Composition	Fini	Abrasion (D.F.)	Résistance à la lumière	Code de nettoyage
ARLO - 56" 	100% Polyester	Endurepel Sheild	105 000	40 Heures Classe 4	WS

CODE DE NETTOYAGE

- **WS:** Utiliser un agent nettoyant à base d'eau

TECHNICAL INFORMATION

Width - Pattern	Content	Finish	Abrasion (D.F.)	Lightfastness	Cleaning Code
ARLO - 56" 	100% Polyester	Endurepel Sheild	105 000	40 Hours Class 4	WS

CLEANING CODE

- **WS:** Clean fabrics with water-based cleaning agents only do not use solvent cleaners



10871, avenue Salk
Montréal-Nord
(Québec) Canada
H1G 6M7

bouty.com



Échantillons disponibles via Bouty et Adi
Memo samples are available via Bouty and Adi

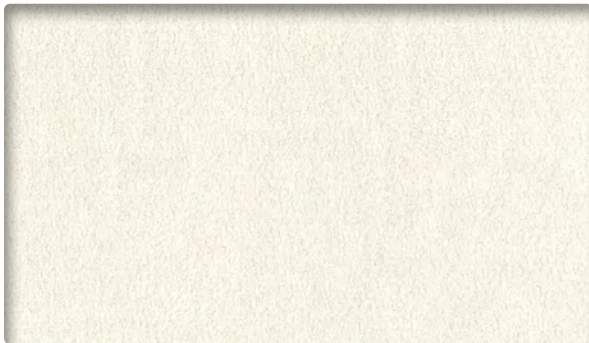


3450, 1re Rue
Saint-Hubert
(Québec) Canada
J3Y 8Y5

adi-artdesign.com

Grade A
Comrade

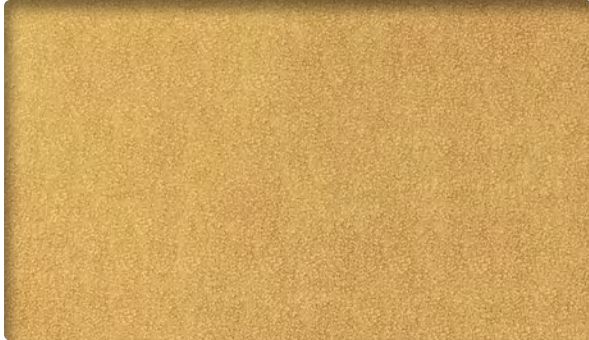
IRON
CO905



SNOW
CO601



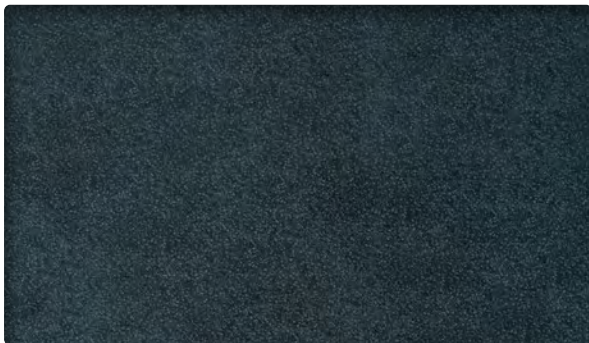
MERCURY
CO902



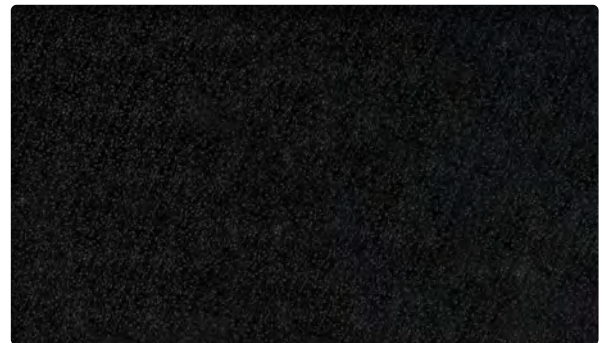
MARIGOLD
CO57



ALPINE
CO24




MIDNIGHT
CO309



SHADOW
CO909


INFORMATION TECHNIQUE

Patron - Largeur	Composition	Fini	Abrasion (D.F.)	Résistance à la lumière	Code de nettoyage
COMRADE - 55" 	100% Polyester	Endurepel Shield	90 000	-	W

CODE DE NETTOYAGE

- **WS:** Nettoyez les tissus avec de la mousse ou des agents de nettoyage à base d'eau.

TECHNICAL INFORMATION

Width - Pattern	Content	Finish	Abrasion (D.F.)	Lightfastness	Cleaning Code
COMRADE - 55" 	100% Polyester	Endurepel Shield	90 000	-	W

CLEANING CODE

- **W:** Clean fabrics with water-based cleaning agents or water based foam.



10871, avenue Salk
Montréal-Nord
(Québec) Canada
H1G 6M7

bouty.com



Échantillons disponibles via Bouty et Adi
Memo samples are available via Bouty and Adi



3450, 1re Rue
Saint-Hubert
(Québec) Canada
J3Y 8Y5

adi-artdesign.com

Grade A
CORNERBLOCK

BLACK
CB9009

CHARCOAL
CB908

NAVY
CB308

BROWN
CB87


INFORMATION TECHNIQUE

Patron - Largeur	Composition	Finis	Abrasion (D.F.)	Résistance à la lumière	Code de nettoyage	Fournisseur
CORNERBLOCK - 57" 	100 % Polyester	Naturel	420 000	40 Heures Classe 4,5	S	J. ENNIS

CODE DE NETTOYAGE

- S: Utiliser seulement un solvant pur et sans eau.

TECHNICAL INFORMATION

Width - Pattern	Content	Finish	Abrasion (D.F.)	Lightfastness	Cleaning Code	Supplier
CORNERBLOCK - 57" 	100 % Polyester	Natural	420 000	40 Hours Class 4,5	S	J. ENNIS

CLEANING CODE

- S: Only use pure, water-free solvent.



10871, avenue Salk
Montréal-Nord
(Québec) Canada
H1G 6M7

bouty.com



Échantillons disponibles via Bouty et Adi
Memo samples are available via Bouty and Adi



3450, 1re Rue
Saint-Hubert
(Québec) Canada
J3Y 8Y5

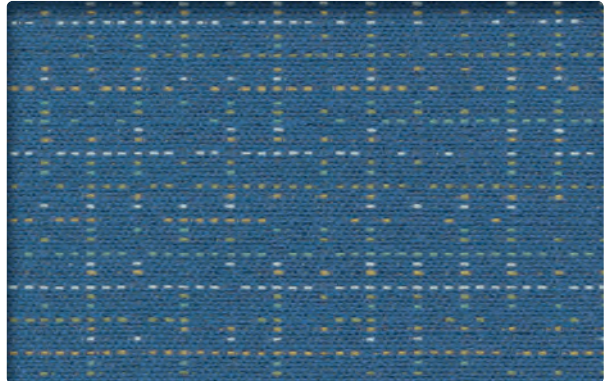
adi-artdesign.com



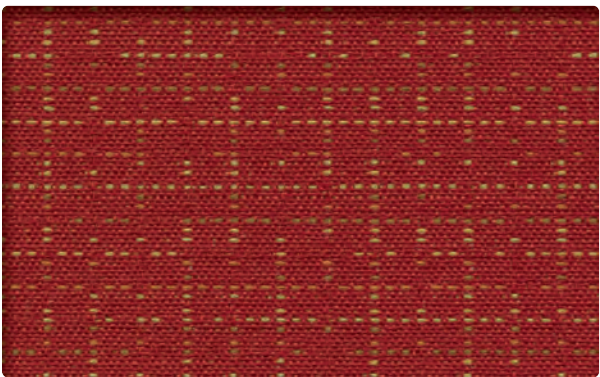
THREAD
1755



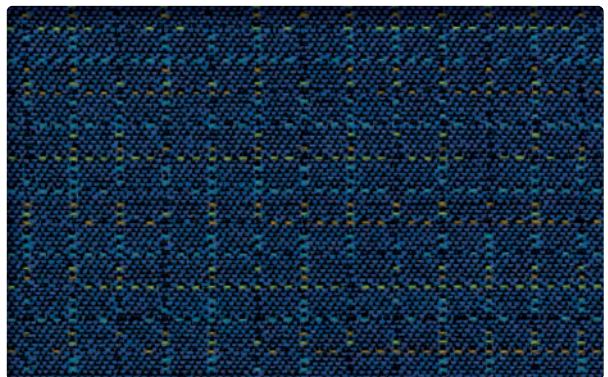
THIMBLE
1756



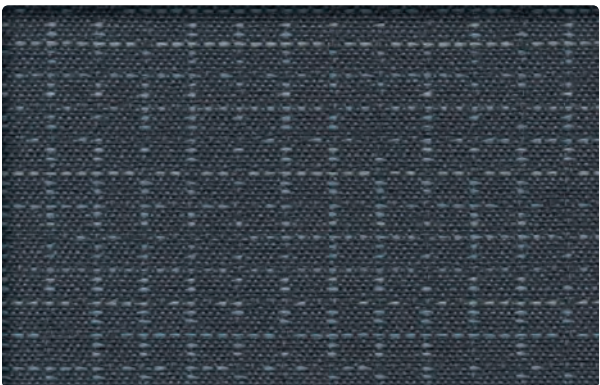
CREWEL
1758



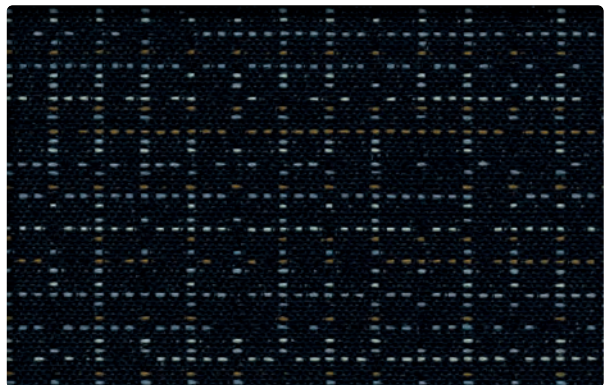
BASTING
1751



TAILOR
1757



SHEARS
1750



SEAM
1752

INFORMATION TECHNIQUE


Patron - Largeur	Composition	Finis	Abrasion (D.F.)	Résistance à la lumière	Code de nettoyage
COUTURE- 54" 	100 % polyester (84,5 % recyclé)	Antitache	100 000	40 Heures Classe 4,5	WS

CODE DE NETTOYAGE

- **WS:** Utiliser un agent nettoyant à base d'eau ou de mousse ou un solvant pur et sans eau.

Plusieurs facteurs tels que le type d'utilisation et l'entretien peuvent influencer la durabilité et l'apparence originale. Les résultats Wyzenbeek dépassant 100 000 doubles frottements ne sont pas un gage de longévité du produit.

TECHNICAL INFORMATION

Width - Pattern	Content	Finish	Abrasion (D.F.)	Lightfastness	Cleaning Code
PEBBLE - 54" 	100 % Polyester (10,3 % Recycled)	Soil and stain repellent	100,000	40 Hours Class 4,5	WS

CLEANING CODE

- **WS:** Use water-based or foam cleaning agent, or pure water-free solvent.

Multiple factors affect fabric durability and appearance retention, including end-user application and proper maintenance. Wyzenbeek results above 100,000 double rubs have not been shown to be an indicator of increased lifespan.



10871, avenue Salk
Montréal-Nord
(Québec) Canada
H1G 6M7

bouty.com

Échantillons disponibles via
Memo samples are available from



For more information contact Sales Service:
800-544-0200

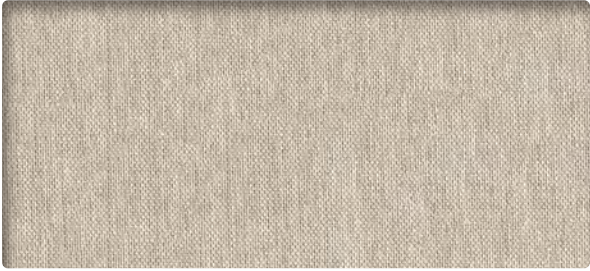


3450, 1re Rue
Saint-Hubert
(Québec) Canada
J3Y 8Y5

adi-artdesign.com



AIR
FD3003



LINEN
FD608



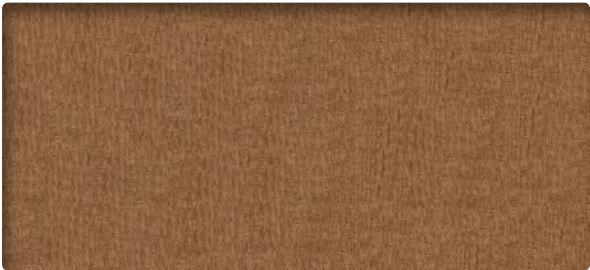
WIND CHIME
FD905



OLD GOLD
FD4009



RADIANT ORCHID
FD102



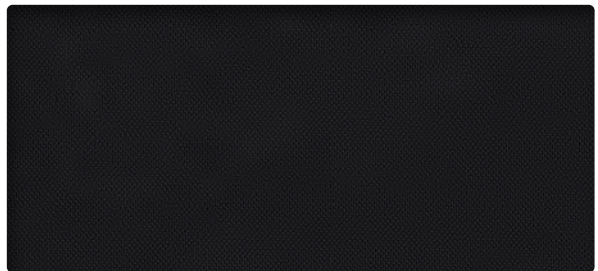
SADDLEWOOD
FD8006



MUD
FD908



STEEL
FD9003



LICORICE
FD9009

INFORMATION TECHNIQUE

Patron - Largeur	Composition	Fini	Abrasion (D.F.)	Résistance à la lumière	Code de nettoyage
FOUNDATION - 57" 	100% Polyester	Endurepel Shield	100 000	40 Heures Classe 3,5	SW

CODE DE NETTOYAGE

- SW: -

TECHNICAL INFORMATION

Pattern - Width	Content	Finish	Abrasion (D.F.)	Lightfastness	Cleaning Code
FOUNDATION - 57" 	100% Polyester	Endurepel Shield	100 000	40 Hours Class 3,5	SW

CLEANING CODE

- SW: Clean fabrics with water-based cleaning agents.



10871, avenue Salk
Montréal-Nord
(Québec) Canada
H1G 6M7

bouty.com



Échantillons disponibles via Bouty et Adi
Memo samples are available via Bouty and Adi



3450, 1re Rue
Saint-Hubert
(Québec) Canada
J3Y 8Y5

adi-artdesign.com

Grade A
FRANKLIN

BLUSH
FR105



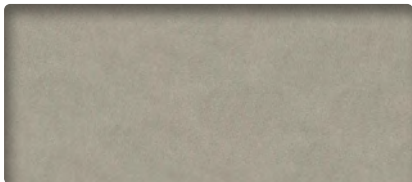
OYSTER
FR601



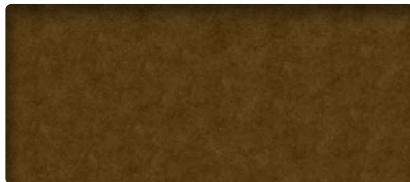
BRASS
FR84



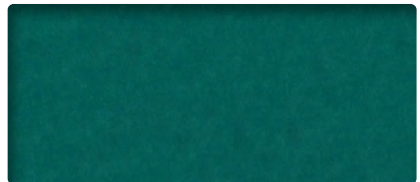
SAGE
FR202



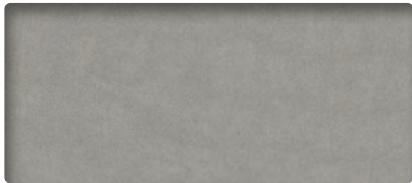
CINDER
FR97



CAMEL
FR47



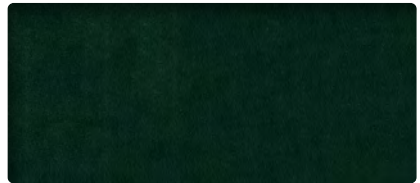
TEAL
FR34



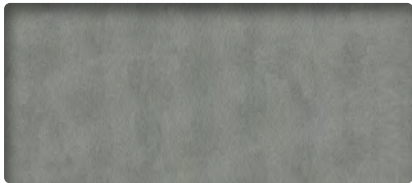
PLATINUM
FR92



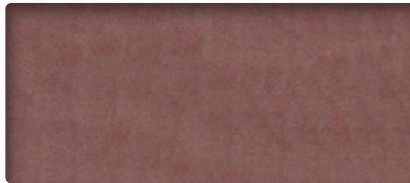
ORCHID
FR108



EMERALD
FR82



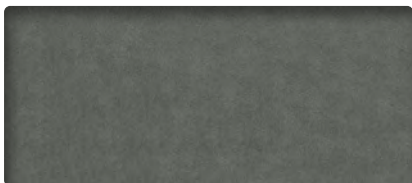
SMOKE
FR908



BLUSH
FR105



IMPERIAL
FR306



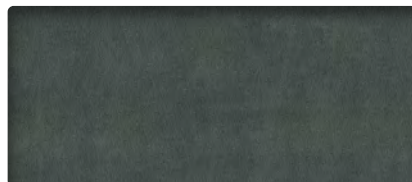
STEEL
FR99



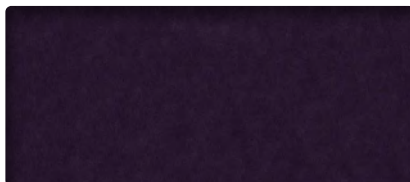
MIDNIGHT
FR3009



CERULEAN
FR36



METAL
FR94



DEEP PURPLE
FR1008



BLACK
FR0909


INFORMATION TECHNIQUE

Patron - Largeur	Composition	Fini	Abrasion (D.F.)	Résistance à la lumière	Code de nettoyage
FRANKLIN - 56" 	100% Polyester	Endurepel Shield	235 000	40 Heures Classe 4	WS

CODE DE NETTOYAGE

- WS: -

TECHNICAL INFORMATION

Pattern - Width	Content	Finish	Abrasion (D.F.)	Lightfastness	Cleaning Code
FRANKLIN - 56" 	100% Polyester	Endurepel Shield	100 000	40 Hours Class 4	WS

CLEANING CODE

- WS: Clean fabrics with water-based cleaning agents only do not use solvent cleaners



10871, avenue Salk
Montréal-Nord
(Québec) Canada
H1G 6M7

bouty.com



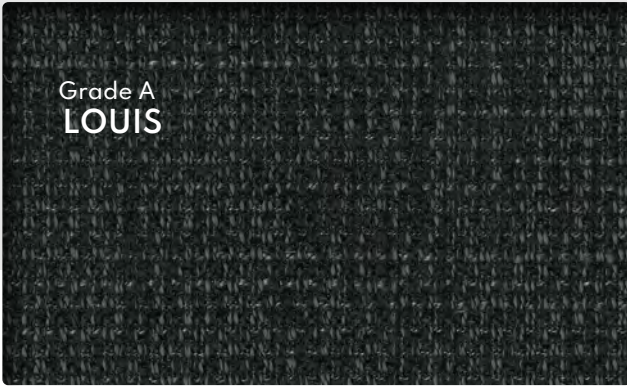
Échantillons disponibles via Bouty et Adi
Memo samples are available via Bouty and Adi



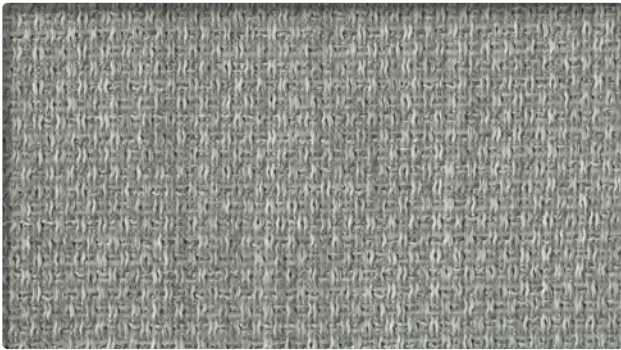
3450, 1re Rue
Saint-Hubert
(Québec) Canada
J3Y 8Y5

adi-artdesign.com

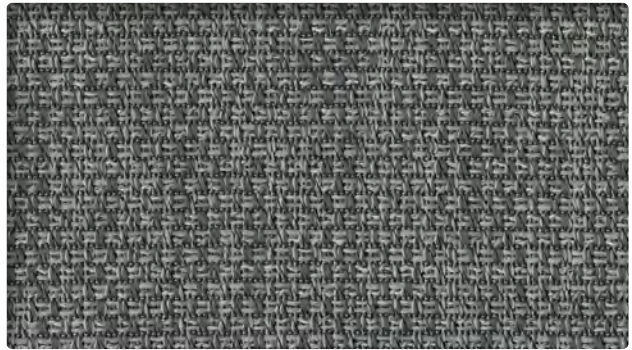
Grade A
LOUIS



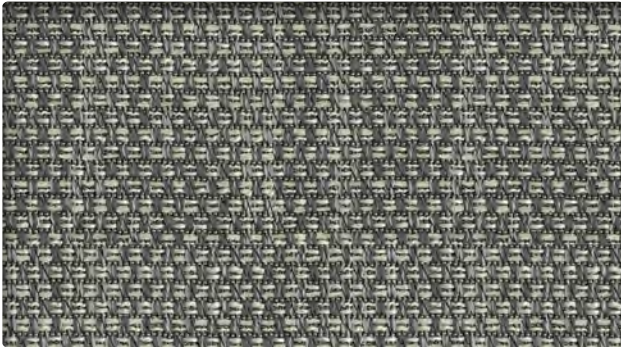
JET BLACK
LO9009



DIM GREY
LO9003



GRAPHITE
LO9006



WIND
LO93



GOLD TWIST
LO5009




BLUE WASH
LO7003



TEAL MIX
LO37

INFORMATION TECHNIQUE

Patron - Largeur	Composition	Fini	Abrasion (D.F.)	Résistance à la lumière	Code de nettoyage
LOUIS - 56" 	100% polyester	Endurepel Shield	440 000	40 Heures Classe 4.5	SW

CODE DE NETTOYAGE

- W: -

TECHNICAL INFORMATION

Pattern - Width	Content	Finish	Abrasion (D.F.)	Lightfastness	Cleaning Code
LOUIS - 56" 	100% Polyester	Endurepel Shield	440 000	40 Hours Class 4.5	SW

CLEANING CODE

- W: Clean fabrics with water-based cleaning agents.



10871, avenue Salk
Montréal-Nord
(Québec) Canada
H1G 6M7

bouty.com



Échantillons disponibles via Bouty et Adi
Memo samples are available via Bouty and Adi



3450, 1re Rue
Saint-Hubert
(Québec) Canada
J3Y 8Y5

adi-artdesign.com

Grade A
MONROE

TURQUOISE
MO34



STRAW
MO47



COIN
MO57



BURLAP
MO605



QUARTZ
MO81



WISTERIA
MO105



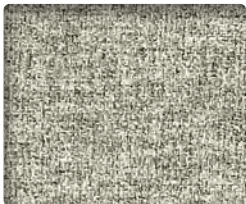
CARIBBEAN
MO31



PEWTER
MO9003



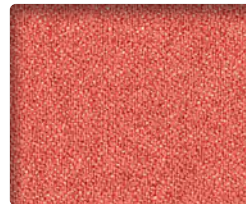
SAGE
MO27



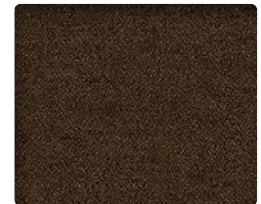
MICA
MO902



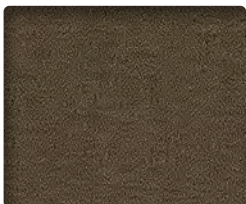
STEEL
MO9006



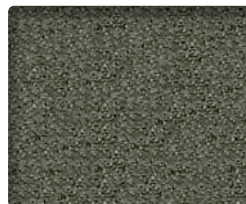
CORAL
MO11



SABLE
MO8009



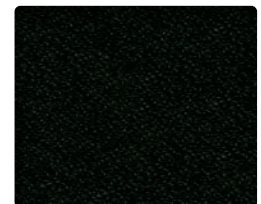
GRANITE
MO91



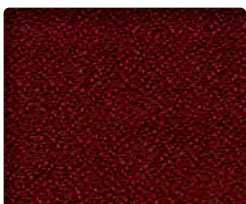
MINERAL
MO86



CAPER
MO908



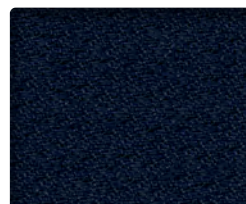
BLACK
MO9009



CHIPOTLE
MO14



INDIGO
MO305



NAVAL
MO308


INFORMATION TECHNIQUE

Patron - Largeur	Composition	Fini	Abrasion (D.F.)	Résistance à la lumière	Code de nettoyage
MONROE - 56" 	100% Polyester	Naturel	165 000	40 Heures Classe 4,5	W

CODE DE NETTOYAGE

- W: Utiliser un savon doux à base d'eau ou une mousse à base d'eau.

TECHNICAL INFORMATION

Width - Pattern	Content	Finish	Abrasion (D.F.)	Lightfastness	Cleaning Code
MONROE - 56" 	100% Polyester	Natural	165 000	40 Hours Class 4,5	W

CLEANING CODE

- W: Use mild soap and water or a water based cleaning agent or water based foam.



6505, Boulevard Métropolitain Est
Saint-Léonard (Quebec)
Canada
H1P 1X9

bouty.com



Échantillons disponibles via Bouty et Adi
Memo samples are available via Bouty and Adi



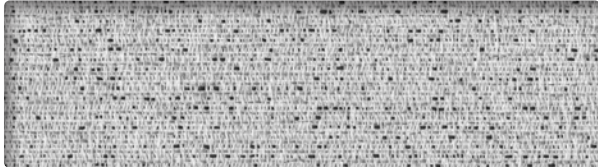
3450, 1re Rue
Saint-Hubert
(Québec) Canada
J3Y 8Y5

adi-artdesign.com

Grade A
PEBBLE



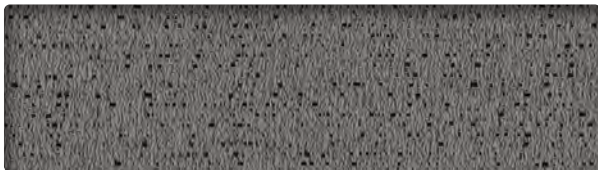
PARAKOLEA
1513



MABUA
1506



NEGRIL
1512



LANGKAWI
1518



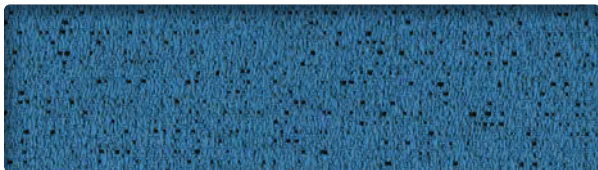
CHESIL
1514



NICE
1501



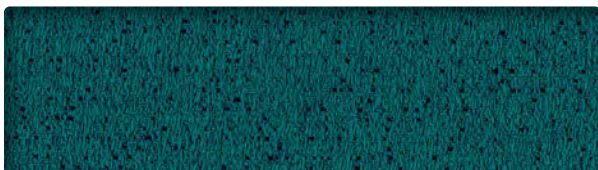
RED BEACH
1410



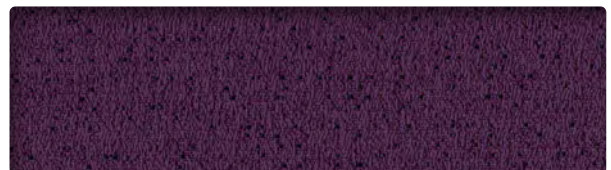
WAIKIKI
1517



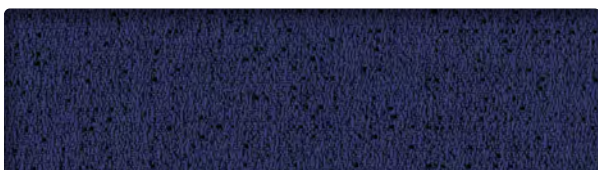
COPACABANA
1516



SURFER'S PARADISE
1511



SOUTH BEACH
1504



SIESTA
1503



TENERIFE
1508

INFORMATION TECHNIQUE


Patron - Largeur	Composition	Fini	Abrasion (D.F.)	Résistance à la lumière	Code de nettoyage
PEBBLE - 54" 	100 % polyester (10,3 % recyclé)	Antitache	100 000	40 Heures Classe 4,5	WS

CODE DE NETTOYAGE

- **WS:** Utiliser un agent nettoyant à base d'eau ou de mousse ou un solvant pur et sans eau.

Plusieurs facteurs tels que le type d'utilisation et l'entretien peuvent influencer la durabilité et l'apparence originale. Les résultats Wyzenbeek dépassant 100 000 doubles frottements ne sont pas un gage de longévité du produit.

TECHNICAL INFORMATION

Width - Pattern	Content	Finish	Abrasion (D.F.)	Lightfastness	Cleaning Code
PEBBLE - 54" 	100 % Polyester (10,3 % Recycled)	Soil and stain repellent	100,000	40 Hours Class 4,5	WS

CLEANING CODE

- **WS:** Use water-based or foam cleaning agent, or pure water-free solvent.

Multiple factors affect fabric durability and appearance retention, including end-user application and proper maintenance. Wyzenbeek results above 100,000 double rubs have not been shown to be an indicator of increased lifespan.



10871, avenue Salk
Montréal-Nord
(Québec) Canada
H1G 6M7

bouty.com

Échantillons disponibles via
Memo samples are available from



For more information contact Sales Service:
800-544-0200



3450, 1re Rue
Saint-Hubert
(Québec) Canada
J3Y 8Y5

adi-artdesign.com

Grade A
PUNCH CARD



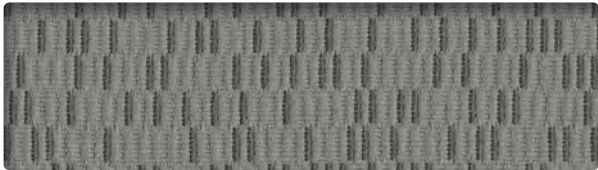
CADET
1310



PUTTY
1303



ALBASTER
1301



SILVER LINING
1304



ORANGE
1308



SKY
1306



CRIMSON
1307



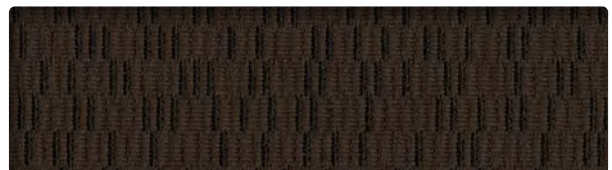
CRISP
1305



BURGUNDY
1311



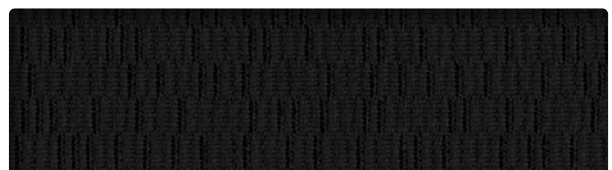
CARBON
1302



PEAT
1312



NAVY
1309



ABYSS
1313

INFORMATION TECHNIQUE


Patron - Largeur	Composition	Fini	Abrasion (D.F.)	Résistance à la lumière	Code de nettoyage
PUNCH CARD - 54" 	100 % polyester (22 % recyclé)	Antitache	100 000	40 Heures Classe 4	WS

CODE DE NETTOYAGE

- **WS:** Utiliser un agent nettoyant à base d'eau ou de mousse ou un solvant pur et sans eau.

Plusieurs facteurs tels que le type d'utilisation et l'entretien peuvent influencer la durabilité et l'apparence originale. Les résultats Wyzenbeek dépassant 100 000 doubles frottements ne sont pas un gage de longévité du produit.

TECHNICAL INFORMATION

Width - Pattern	Content	Finish	Abrasion (D.F.)	Lightfastness	Cleaning Code
PUNCH CARD - 54" 	100 % Polyester (22 % Recycled)	Soil and stain repellent	100,000	40 Hours Class 4	WS

CLEANING CODE

- **WS:** Use water-based or foam cleaning agent, or pure water-free solvent.

Multiple factors affect fabric durability and appearance retention, including end-user application and proper maintenance. Wyzenbeek results above 100,000 double rubs have not been shown to be an indicator of increased lifespan.



10871, avenue Salk
Montréal-Nord
(Québec) Canada
H1G 6M7

bouty.com

Échantillons disponibles via
Memo samples are available from



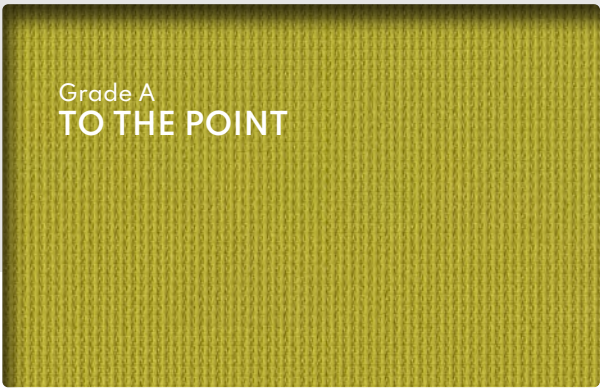
For more information contact Sales Service:
800-544-0200



3450, 1re Rue
Saint-Hubert
(Québec) Canada
J3Y 8Y5

adi-artdesign.com

Grade A
TO THE POINT



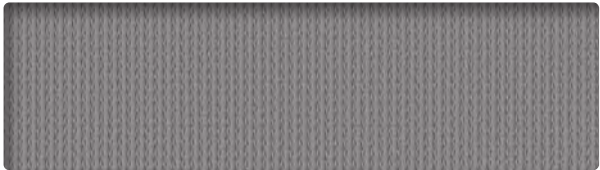
KIWI
1405



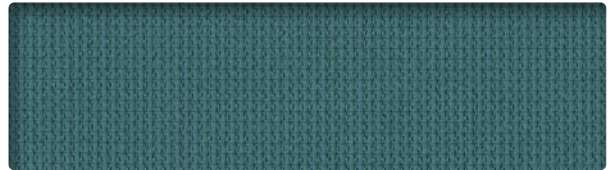
ALMOND
1414



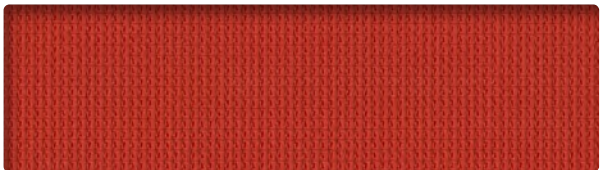
MOSS
1404



GRAVEL
1413



BLUEGRASS
1403



AMARYLLIS
1408



AZALEA
1410



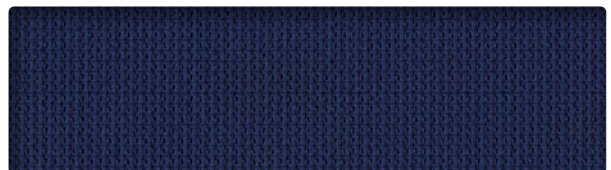
CURRANT
1411



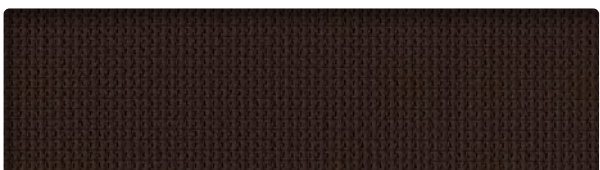
COBALT
1419



CINDER
1412



INDIGO
1418



COFFEE
1416



EBONY
1415

INFORMATION TECHNIQUE


Patron - Largeur	Composition	Finis	Abrasion (D.F.)	Résistance à la lumière	Code de nettoyage
TO THE POINT- 54" 	100 % polyester (44 % recyclé)	Antitache	140 000	40 Heures Classe 4	WS

CODE DE NETTOYAGE

- **WS:** Utiliser un agent nettoyant à base d'eau ou de mousse ou un solvant pur et sans eau.

Plusieurs facteurs tels que le type d'utilisation et l'entretien peuvent influencer la durabilité et l'apparence originale. Les résultats Wyzenbeek dépassant 100 000 doubles frottements ne sont pas un gage de longévité du produit.

TECHNICAL INFORMATION

Width - Pattern	Content	Finish	Abrasion (D.F.)	Lightfastness	Cleaning Code
TO THE POINT- 54" 	100 % Polyester (44 % Recycled)	Soil and stain repellent	140,000	40 Hours Class 4	WS

CLEANING CODE

- **WS:** Use water-based or foam cleaning agent, or pure water-free solvent.

Multiple factors affect fabric durability and appearance retention, including end-user application and proper maintenance. Wyzenbeek results above 100,000 double rubs have not been shown to be an indicator of increased lifespan.



10871, avenue Salk
Montréal-Nord
(Québec) Canada
H1G 6M7

bouty.com

Échantillons disponibles via
Memo samples are available from



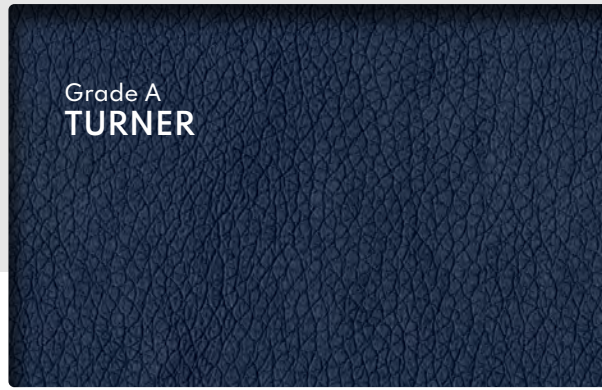
For more information contact Sales Service:
800-544-0200



3450, 1re Rue
Saint-Hubert
(Québec) Canada
J3Y 8Y5

adi-artdesign.com

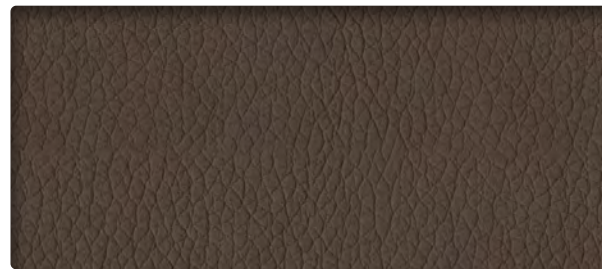
Grade A
TURNER



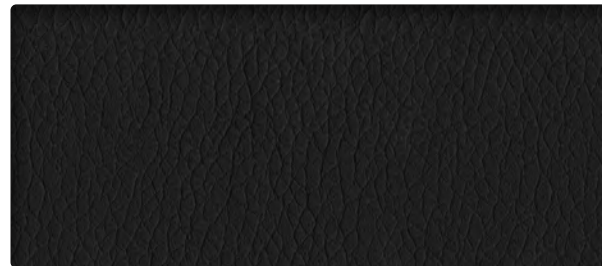
TUR-NAVY
3006



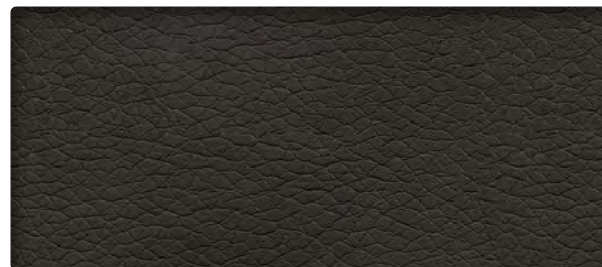
TUR-STEEL
905



TUR-MOCHA
808



TUR-BLACK
9009



TUR-CHINCHILLA
6009


INFORMATION TECHNIQUE

Patron - Largeur	Composition	Finis	Abrasion (D.F.)	Résistance à la lumière	Code de nettoyage	Fournisseur
TURNER - 54"   	100% Polyuréthane	Naturel	500 000	40 Heures Classe 4,5	W	J. ENNIS

CODE DE NETTOYAGE

- **W:** Utiliser un agent nettoyant à base d'eau ou de mousse.

TECHNICAL INFORMATION

Width - Pattern	Content	Finish	Abrasion (D.F.)	Lightfastness	Cleaning Code	Supplier
TURNER - 54"   	100% Polyurethane	Natural	500 000	40 Hours Class 4,5	W	J. ENNIS

CLEANING CODE

- **W:** Use water-based or foam cleaning agent.



10871, avenue Salk
Montréal-Nord
(Québec) Canada
H1G 6M7

bouty.com



Échantillons disponibles via Bouty et Adi
Memo samples are available via Bouty and Adi



3450, 1re Rue
Saint-Hubert
(Québec) Canada
J3Y 8Y5

adi-artdesign.com