

## Member Benefits

With dues paid annually and with Membership status in good standing, PESC benefits are available to Member organizations. Representatives (employees/staff) from Member organizations then volunteer to join a PESC group or committee with other volunteers from PESC Member organizations and together we aspire toward and achieve common goals.

Each organization is asked to designate one official voting representative to serve as that organization's official PESC representative. Once a Member though, there is no limit on the number of representatives an organization can volunteer on any PESC group or committee.

### > Unlimited, active participation available in:

- PESC Standards Development Forum for Education, all PESC Workgroups, User Groups, Task Forces, and all data standards-setting development groups & initiatives
- PESC Member Meetings, webinars and white papers

### > Qualified to serve in leadership roles:

- Chair/Co-Chair of initiatives, workgroups, Task Forces & User Groups
- on Steering Committees of the Competencies & Credentials User Group, EdExchange User Group, GEO Code User Group and the Standards Forum for Education
- on the Board of Directors
- as speakers/panelists representing PESC at industry events & meetings

### > Right to vote on:

- PESC Approved Standards
- elections of the Board of Directors
- changes to PESC by-laws
- issues proposed by the Members

### > Eligible:

- for appointment to PESC's Ambassador Program
- to propose workgroup topics to the Board of Directors for standards development and/or research
- submit articles and press releases for inclusion in PESC's newsletter THE STANDARD

### > Discounted member rates:

- PESC meetings & conferences
- PESC Fall Data Summits
- PESC Spring Data Summits
- Seal of Approval Program

### > Free access to all PESC conference calls & webinars

> **Linked as a Member on PESC website** (with a link to your website), in certain publications, and in promotional materials

> **Networking and collaboration** with other Membership organizations that support data exchange standardization

> **Social Media & Online Presence** communications on Facebook, Twitter, LinkedIn and PESC Website



## Who We Are

### Established in 1997 at the National Center for Higher Education.

Headquartered in Washington DC, PESC – The Postsecondary Electronic Standards Council is an international, 501 (c)(3) non-profit, community-based, umbrella association comprised of Members from:

- software, education technology and data service providers & vendors;
- schools, districts, colleges and universities;
- college, university and state/provincial systems;
- local, state/provincial and federal government offices;
- commercial, professional and non-profit organizations;
- non-profit associations and foundations.

PESC serves as an open, data standards-development and open, data standards-setting body producing PESC Approved Standards, Technology and Services.

## Mission & Vision

### To lead the establishment and adoption of trusted, free & open data standards across the education domain.

PESC envisions complete, global connectivity within the Education domain, supported by a trustworthy, digital network built by and between communities of interest in which data flows seamlessly from one community or system to another and throughout the entire ecosystem when and where needed without compatibility barriers but in a safe, secure, reliable, legal, and efficient manner.

**ANNUAL MEMBER DUES**, as the principal source of funding for PESC, support all data standards and technical specifications development, issuance & maintenance of PESC APPROVED STANDARDS – provided free and without charge; all official PESC communications and outreach activities; and PESC events and industry meetings.

**PESC APPROVED STANDARDS** are platform, system and application neutral; adopted and integrated in systems, networks, applications, products and services; support a transaction or business process and; can be used or implemented one independently from another.

"PESC...a strong and influential voice for promoting national and international standards to facilitate postsecondary data exchange."

Ken Sauer, Ph.D., Senior Associate Commissioner and Chief Academic Officer, Indiana Commission for Higher Education

"PESC is more than a think-tank for creative minds and more than the standards it publishes. PESC is the platform for innovative, problem-solving dialogue, which results in functional standards based on real-world business models."

Anne Valentine, President & CEO, DegreeData

"The Nova Scotia Council on Admission & Transfer (NSCAT) is excited to become a PESC Member. We are happy to support development of the standards that are key to our success."

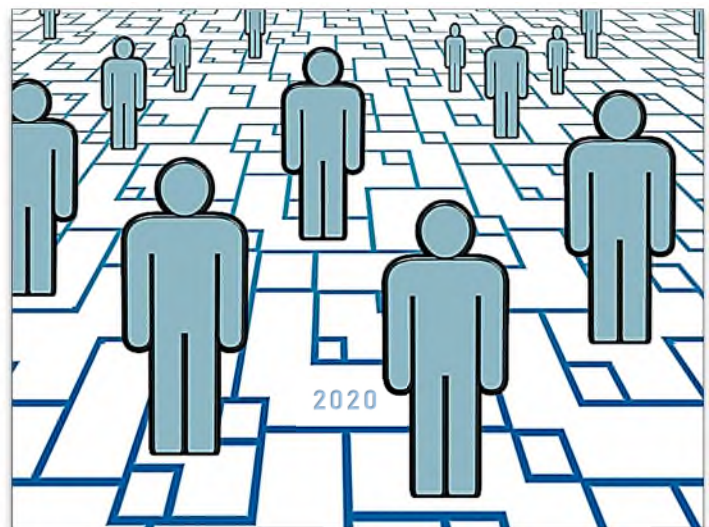
Ruth Blades, Operations Manager, NSCAT



## PESC MEMBER APPLICATION & AGREEMENT



MULTIPLE STAKEHOLDERS. ONE VISION.



www.PESC.org



## Welcome Message

FROM  
**MICHAEL D. SESSA**  
PRESIDENT & CEO



On behalf of the PESC & the PESC Board of Directors, I am pleased to present to you PESC's Member Application & Agreement! To join PESC, please review, complete and return the Member form. If you have any questions, please contact Jennifer Kim, PESC Membership Services Director, at +1.202.261.6516 or [jennifer.kim@pesc.org](mailto:jennifer.kim@pesc.org).

**PESC is working** to become the voice for the efficient and secure real-time exchange of student data from initial access of the student from high school into the college and university environment through successful completion of the education experience and into the workforce.

**PESC is driving** the collaborative development and alignment of data across disparate systems and across sectors; and, eliminating incompatible interfaces that disrupt student & learner achievement and inflate costs for institutions, states, provinces, government agencies and schools struggling to keep up with the demands of technology while maintaining competitive tuition and/or spending rates.

**PESC's strength and influence**, still true now as it was when founded in 1997, are derived from the direct actions & voluntary participation of its Members and collaborating within the Education community continues to bring us closer to our mutual goals.

**By joining PESC as a Member**, you join the rest of the education technology, data, research, foundational and policy communities in this mission.

**Join the Effort. Join the Community. Join PESC.**

[www.PESC.org](http://www.PESC.org)



## Groups & Initiatives

PESC hosts groups for the general public and for Members only. All groups and initiatives foster collaboration across educational sectors to solve industry-shared problems; strive to bring much needed clarity & coherence to the education ecosystem; educate and inform on current initiatives and emerging best practices impacting technology and standards; promote innovative, collaborative solutions that employ automated, reusable and sustainable technologies and standards. Please check the PESC website for current groups and initiatives.

### Annual Member Dues

#### NON-PROFIT COLLEGE OR UNIVERSITY

- 1 campus \$500
- 2 – 10 campuses \$750
- 11+ campuses \$1,000

#### LOCAL EDUCATION AGENCY (LEA) OR SCHOOL

- < 1,000 students \$500
- 1,000 < 10,000 students \$750
- 10,000 < 50,000 students \$1,000
- 50,000+ students \$2,500

#### FOR-PROFIT COLLEGE OR UNIVERSITY

- < 1,000 students \$500
- 1,000 < 10,000 students \$750
- 10,000 < 50,000 students \$1,000
- 50,000+ students \$2,500

#### NON-PROFIT ORGANIZATION W/ REVENUES

- < \$500,000 \$1,000
- \$500,000 < \$1M \$2,500
- \$1M < \$10M \$5,000
- \$10M < \$100M \$7,500
- \$100M < \$1B \$15,000
- \$1B+ \$25,000

#### COMMERCIAL & VENDOR ORGANIZATION W/ REVENUES

- < \$250,000 \$1,000
- \$250,000 < \$500,000 \$2,500
- \$500,000 < \$1M \$5,000
- \$1M < \$10M \$7,500
- \$10M < \$100M \$15,000
- \$100M < \$1B \$25,000
- \$1B+ \$30,000

#### STATE, PROVINCIAL & FEDERAL GOVERNMENT

- Individual Agency or Office \$1,000
- State/Province Department \$10,000
- Country \$50,000

#### NON-PROFIT ASSOCIATION \$5,000

#### FOUNDATION \$5,000

#### BANK, LENDER OR SERVICER \$10,000



## Become a PESC Member Today!

To join PESC as an Annual Member, please complete the Member Application & Agreement below and send it along with a check payable to: PESC, 1250 Connecticut Avenue NW, Suite 700, Washington DC, 20036. PESC Tax ID#: 52-2179499. To pay by credit card or by wire, please contact Jennifer Kim, PESC Membership Services Director, directly at +1.202.261.6516 or [jennifer.kim@pesc.org](mailto:jennifer.kim@pesc.org).

### Member Application & Agreement

- |   |   |
|---|---|
| <input type="checkbox"/> NON-PROFIT COLLEGE/UNIVERSITY  | <input type="checkbox"/> STATE, PROVINCE, FEDERAL GOVT. |
| <input type="checkbox"/> LOCAL EDUCATION AGENCY/SCHOOL  | <input type="checkbox"/> NON-PROFIT ASSOCIATION         |
| <input type="checkbox"/> FOR PROFIT COLLEGE/UNIVERSITY  | <input type="checkbox"/> FOUNDATION                     |
| <input type="checkbox"/> NON-PROFIT ORGANIZATION        | <input type="checkbox"/> BANK, LENDER, SERVICER         |
| <input type="checkbox"/> COMMERCIAL ORGANIZATION/VENDOR | <input type="checkbox"/> OTHER                          |

ORGANIZATION NAME

ORGANIZATION WEBSITE, FACEBOOK, TWITTER

CONTACT PERSON NAME & TITLE

ADDRESS

CITY, STATE/PROVINCE, ZIP, COUNTRY

EMAIL

\$ ANNUAL DUES

REFERRING MEMBER

SIGNATURE

DATE