

Contact Us:**Phone:** (802) 430-3617**Email:** tempurtechsales@gmail.com

TEMPURTECH HEATED ROOF MATS

INSTALLATION

CAUTION: DO NOT MODIFY MATS, CONTACT TEMPURTECH
WITH ANY CONCERNS

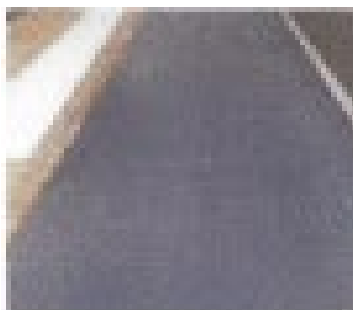
STEP 1:

Make sure roof is swept clean of all debris and dirt. If possible, power wash the roof.

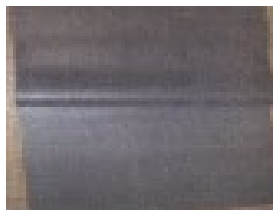
STEP 2:

Unroll the mats and place them in their final positions. DO NOT apply adhesives until you're certain of the mat's size and configuration.

If your mat does not fit in the application area, contact Tempurtech at the listed phone number or email. DO NOT modify the mats yourself.

**STEP 3: (Applicable if using glue)**

Fold 1/2 the mat back on itself and apply EPDM primer to edge of mat and surface of roof. The primer should be used on all roof applications to ensure the strongest hold.



IF USING TAPE TO SECURE MATS primer is not needed and the tape may be directly applied

STEP 4:**1) Brush on adhesive**

Apply adhesive to both surfaces.
Roll mat down when adhesive becomes sticky

2) Double-sided tape

Roll mat down in position, peel off tape film, press mat back down

3) Fuse adhesive

Roll mat down. Pull back half, apply adhesive to bottom side of mat, press back down.



Fuse adhesive is the recommended adhesive for applying the mats in cold temperatures (<40°F). Apply along outer edges of the mat with a single line down the center. If mats need to be removed from the roof at any point, turn the mat on, let it warm up, then slowly and gently pull the mat up.

Other adhesives are best applied at temperatures above 55°F.

WHEN INSTALLING UNDER A STANDING SEAM OR SHINGLE ROOF

Avoid nailing within 1/2 inch of marked lines. You may nail anywhere else in the mat without doing any harm. Mats may not be cut or folded over on themselves

