

Subject - Computer Assignment Question & Solved Answer
Chapter – 6(Ms - Paint)

Exercise:-

A. Choose the correct answer: -

1. Which one of the following can you do with the help of Ms – Paint?

Ans: - d) All of these.

2. With the help of colour palette you can choose the colour of _____.

Ans: b) Background Drawing area.

3. Which of the following is shape selection option?

Ans: Rectangular selection.

4. What is the used to create a different stroke and give a different effect?

Ans: - Brush

5. To change the direction of the picture, we should choose _____.

Ans: - Rotate.

B. Fill in the blanks: -

1. Microsoft Paint is a computer **Graphic** program.

2. **Free-form selection** tool helps to select the object in an irregular shape.

3. The selected picture will be removed from the screen after you **cut**.

4. You can **paste** an object only after you have selected the cut or copy option before.

5. You can select the arrow pointing right or press **Ctrl +Y** to redo an action.

C. True or false it's your home task.

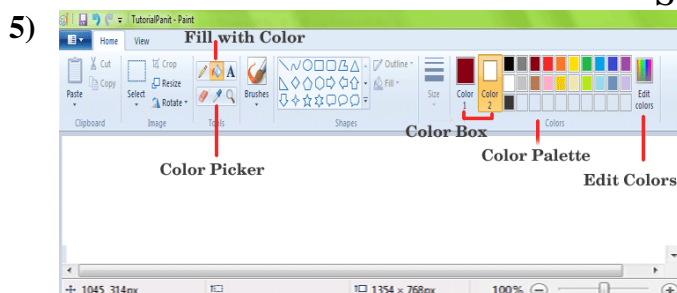
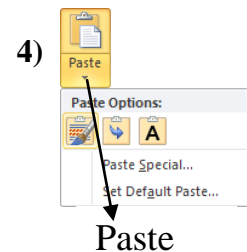
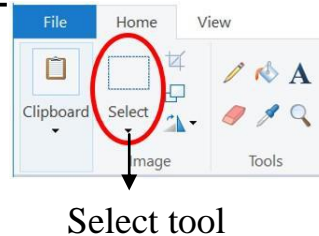
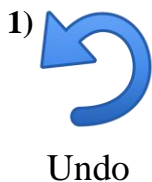
D. Match the columns:

Column – A

Column – B

- | | | |
|--------------------------|---|---------------------|
| 1. Rectangular Selection | → | a) Resize the image |
| 2. Opaque Background | → | b) Selection Option |
| 3. Redo | → | c) Type of Brush |
| 4. Oil Brush | → | d) Redo an action |
| 5. Pixel | → | e) Text box colour |

E. Write the action performed by the image: -



F. Answer the following questions:

1. What is Ms Paint?

Ans: Ms Paint is a basic graphics program or drawing utility that used to drawing picture, colour and edit picture.

2. How do you start Ms Paint?

Ans: To start Ms Paint the following steps are required –

- i) First click the start button.
- ii) Then choose the program options.
- iii) Now, click the Ms Paint option. And immediately you will find the Ms Paint program.

3. Define Select Tool? How many select tools are there in Ms Paint?

Ans: This tool is used to select any part of the picture that we wish to change.

It has two option – i) Rectangular Selection ii) Free – form selection.

4. Define Brush Tool? Name the various type of brush tool?

Ans: Different brushes create a different stroke and give a different effect.

The various types of brushes such as Simple brush, Calligraphy brush (1&2), Airbrush, Oil Brush, Crayon, Natural Pencil, Marker, Water colour brush.

5. How do you save your drawing in Ms Paint?

Ans: To save a drawing the following steps are required –

- i) Click on the file tab.
- ii) The save as dialog box will appears.
- iii) Type the file name and click on save button.

Now your drawing is saved.

Q.G. The short type of Question answer: -

1. Which program is used to draw picture and colour on the screen?

Ans: Ms Paint Program.

2. Write the components of Ms Paint?

Ans: File, Home tab, View Tab etc.

3. What will you use to select any irregular shaped part of your picture?

Ans: Free –Form Select Tool.

4. Which of the Toolbox is used to erase of your picture areas?

Ans: Eraser Tool.

5. What will you use to fill the entire picture with colour?

Ans: Fill with colour tool.

6. Which toolbox is used to select square or rectangular shape of the picture?

Ans: Select tool.

7. Which toolbox is used to enter text in the picture with different background? Ans: Text Box tool.

8. How many paint brush are there in Ms Paint Program?

Ans: 9 brushes.

9. Which tool is used to draw lines are curves?

Ans: Pencil tool.

10. Which of the following indicates the current foreground & Background colours?

Ans: Colour Box.