

FT400 SERIES

Rate/Total Indicators

FEATURES

- Selectable units
- Various outputs
- Non-volatile memory
- Flow alarm
- Battery or external power

APPLICATIONS

- Municipal water treatment
- Industrial fluid control
- Water/wastewater treatment



DL76

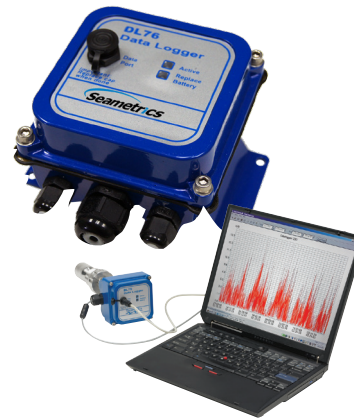
Data Logger

FEATURES

- User-selected sampling interval
- Data storage up to 3 years
- Battery operated
- Units selectable

APPLICATIONS

- Custody transfer regulation
- Peak demand monitoring
- Water usage reporting



AO55

Signal Converter

FEATURES

- Easy set-up
- Smooth output signal
- 2-16 second input average
- Current loop powered

APPLICATIONS

- SCADA/Telemetry
- Chart recording
- Data logging
- PLC input



PT35

Dual Timer

FEATURES

- Bright LED display
- Single or dual timers
- Timer: 1-9999 seconds
- Accumulator: 1-9999 pulses

APPLICATIONS

- Water treatment
- Chemical dosing
- Cooling towers
- Boilers



PC SERIES

Power Supplies

Regulated and unregulated, single or dual power supplies with wall, plug-in or din-rail mounting styles.



FT500 SERIES

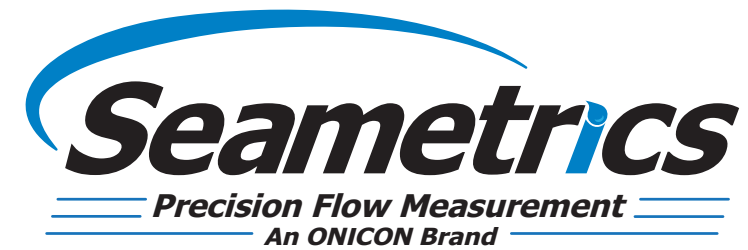
Batch Controls

FEATURES

- 5 digit rate; 8 digit total
- Flow alarms
- Selectable units
- Multiple outputs
- Backlit Display

APPLICATIONS

- Chemical batching
- Volume-based regeneration
- Water leakage detection



Since 1990, Seametrics has been providing high value flow meters and controls. Our guiding principles have been simplicity, and affordability. Over the years our product line has expanded from inexpensive mechanical meters to a highly accurate family of affordable electromagnetic & ultrasonic flow meters to fit a wide range of applications.



IMAG SERIES

Flanged Magmeters

FEATURES

- 3" to 12" sizes
- 2:1 straight pipe
- Pulse output standard
- 4-20mA, Modbus & HART optional
- IP68 & ANSI/NSF 61
- Selectable units

APPLICATIONS

- Water/wastewater
- Municipalities
- Treatment plants
- Pump stations
- Cooling towers
- Packaged plants
- Filtration systems



PE202

Low-Flow Magmeter

FEATURES

- 1/4" to 3/4" sizes
- Chemical and corrosion resistant
- Externally powered
- No straight pipe requirement
- Pulse and/or 4-20 mA output

APPLICATIONS

- Chemical injection/verification
- Low-flow water applications
- Pulsating flows
- Varying viscosities



EX90

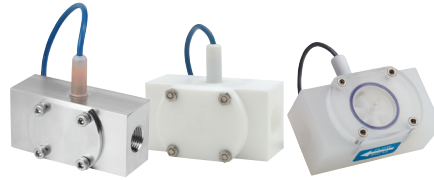
Battery Powered Insertion Magmeter

FEATURES

- No moving parts
- 4 year battery life
- Pulse output standard
- Optional Datalogging
- IP67

APPLICATIONS

- Municipal water
- Water/Wastewater treatment
- Reuse/Reclaim water
- Industrial processes
- Cooling towers
- Pump towers
- Dewatering



S SERIES

Low-Flow Meters

FEATURES

- Flow rates from .07 to 40 GPM
- Pulse output (optional 4-20 mA)
- Polypro, Teflon, Stainless & Brass
- Jewel bearings

APPLICATIONS

- Low flow monitoring
- Chemical batching
- Proportional chemical injection
- Fertilizer injection



WMP SERIES

Plastic-Bodied Magmeters

FEATURES

- 1" to 3" sizes
- External or battery powered
- 2:1 straight pipe
- Pulse output (101 only)

APPLICATIONS

- Well water
- Cooling tower deducts
- Industrial water/wastewater
- Municipal water/wastewater
- Grey water monitoring



WT SERIES

Electronic Turbine Meters

FEATURES

- Pulse output standard
- 4-20 mA optional
- PVC, carbon or stainless steel
- Jewel bearings

APPLICATIONS

- Water treatment
- Cooling water monitoring
- Industrial fluid control
- Clean water



EX100/200 SERIES

Adjustable Depth Insertion Magmeters

FEATURES

- 3" to 48" pipe sizes (up to 72" optional)
- Brass or stainless steel
- Externally powered
- Hot-tap available
- Reverse flow output available

APPLICATIONS

- Clean or dirty fluids
- Municipal water/wastewater
- Industrial water/wastewater
- Conductive fluids
- Aquariums & water parks



MJ SERIES

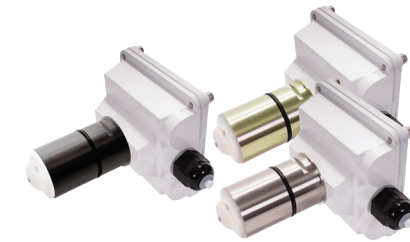
Pulse Meters

FEATURES

- Multiple pulse rates available
- Pulse rate is field changeable
- 105° cold; 194° hot
- No upstream straight pipe

APPLICATIONS

- Cooling tower chemical control
- Industrial water treatment
- Deduct metering
- Metering pump pacing



EX800 SERIES

Fixed Depth Insertion Magmeters

FEATURES

- 1" to 12" pipe sizes
- PVC, brass or stainless steel
- Externally powered
- Low maintenance

APPLICATIONS

- Industrial water/wastewater
- Conductive fluids
- Changing viscosities
- Poor quality water



WJ SERIES

Mechanical Turbine Meters

FEATURES

- 2" to 8" pipe sizes
- Optional pulse rate output
- Accurate and economical
- Pulse rate is field changeable

APPLICATIONS

- Remote totalizing
- Water treatment
- Cooling water monitoring
- Metering pump pacing



IP100/200 SERIES

Adjustable Depth Insertion Paddlewheel

FEATURES

- 3" to 40" pipe sizes
- PVC, brass, stainless steel
- Hot tap available

APPLICATIONS

- Industrial water treatment
- Aquariums, water parks
- Clean water in large pipe



IP800 SERIES

Fixed Depth Insertion Paddlewheel

FEATURES

- 1/2" to 8" pipe sizes
- Low-friction, long-life jewel bearings
- PVC, Polypro, brass, stainless steel

APPLICATIONS

- Industrial water treatment
- Cooling water monitoring
- Chemical proportioning
- Industrial fluid control