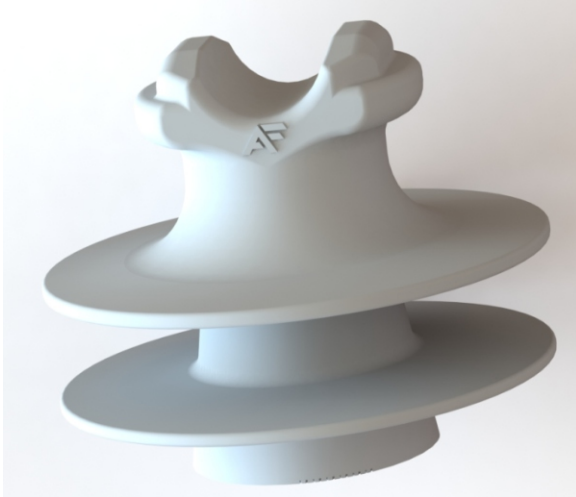




ALUMA-FORM®

Pole Top Pin Insulators



Features

Meets or Exceeds ANSI and RUS Test Standards

ANSI C29.5, C29.6, C29.13

High Density Polyethylene

UV and Ozone Resistant

High Heat Resistant

Impact Resistant

1" and 1-3/8" Threads

Markings

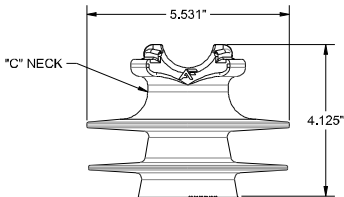
AF Logo

Date Code

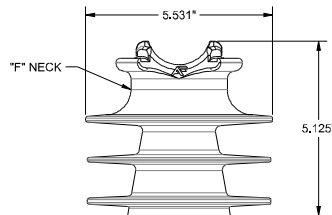
ANSI Class

Part Number

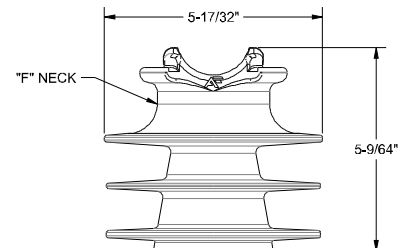
INS	15	P	C	1	
Insulator	Typical Application, kV	Insulator Type	Insulator Neck	Thread Size	Options
	15 = 15kV	P = Pin	C = C Neck	1 = 1"	P = Peek Inserts (clamp top only)
	25 = 25kV		F = F Neck	2 = 1-3/8"	Blank = Ceramic Inserts (clamp top only)
	35 = 35kV		J = J Neck		
			K = Clamp Top		



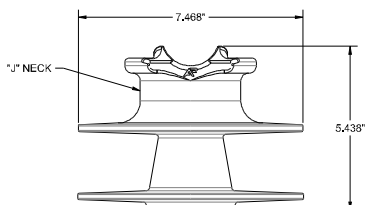
INS-15-PC-1
ANSI 55-3
1" PIN



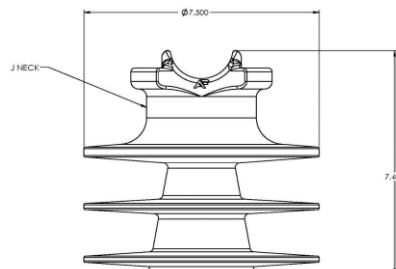
INS-15-PF-1
ANSI 55-4
1" PIN



INS-25-PF-1
ANSI 55-5
1" PIN



INS-25-PJ-2
ANSI 56-1
1-3/8" PIN

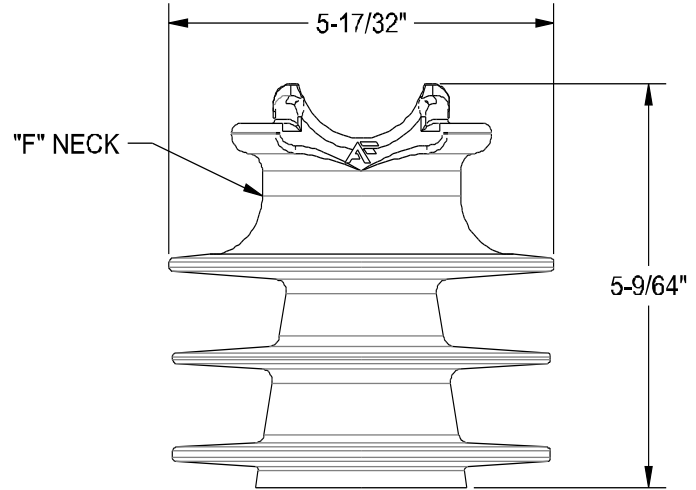
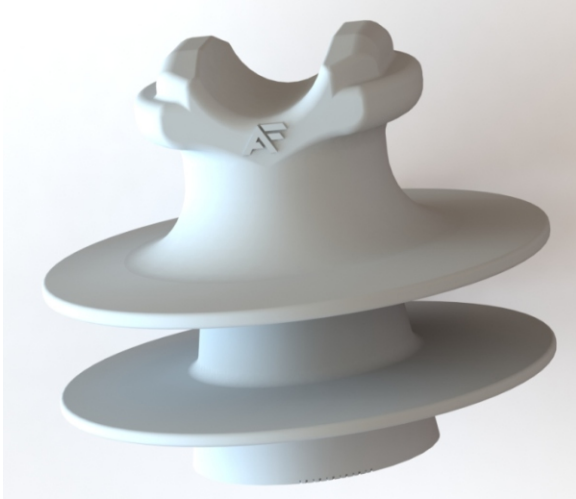


INS-35-PJ-2
ANSI 55-6
1-3/8" PIN



ALUMA-FORM®

Pole Top Pin Insulators



CAT#	ANSI CLASS	TYPICAL APPLICATION (kV)	PINHOLE DIAMETER (IN)	LEAKAGE DISTANCE, in. (ANSI)	CANTILEVER STRENGTH lbs (ANSI)	60Hz DRY FLASHOVER kV (ANSI)	60Hz WET FLASHOVER RkV (ANSI)	IMPULSE FLASHOVER R POS. kV (ANSI)	IMPULSE FLASHOVER NEG. kV (ANSI)	LOW FREQUENCY PUNCTURE kV (ANSI)
INS-15-PC-1	55-3	15	1	10.1 (7)	>3500 (2500)	70 (55)	45 (30)	130 (90)	125 (90)	210 (90)
INS-15-PF-1	55-4	15	1	14.1 (9)	>3500 (3000)	80 (65)	53 (35)	140 (105)	160 (130)	180 (95)
INS-25-PF-1	55-5	25	1	14.3 (12)	>3500 (3000)	82 (80)	55 (45)	140 (130)	160 (150)	189 (115)
INS-25-PJ-1	55-6	25	1	15.7 (15)	>3500 (3000)	100 (100)	70 (50)	155 (150)	190 (170)	200 (135)
INS-25-PJ-2	56-1	25	1-3/8	15.7 (13)	>3500 (3000)	100 (95)	70 (60)	155 (150)	190 (190)	200 (130)
INS-35-PF-1	55-6	35	1	22.3 (15)	>3500 (3000)	100 (95)	70 (60)	155 (150)	190 (190)	200 (130)
INS-35-PF-2	55-7	35	1-3/8	22.3 (15)	>3500 (2500)	100 (95)	70 (60)	155 (150)	190 (190)	200 (130)
INS-35-PJ-1	55-6	35	1	22.5 (15)	>3500 (2500)	121 (100)	72 (50)	205 (150)	225 (170)	210 (135)
INS-35-PJ-2	55-7	35	1-3/8	22.5 (15)	>3500 (2500)	121 (100)	72 (50)	205 (150)	225 (170)	210 (135)