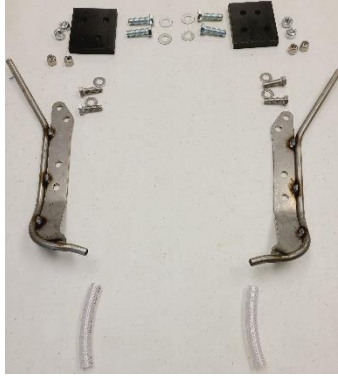


# PICTURE LAYOUT FOR RMTCIH21 N SITE TUBE

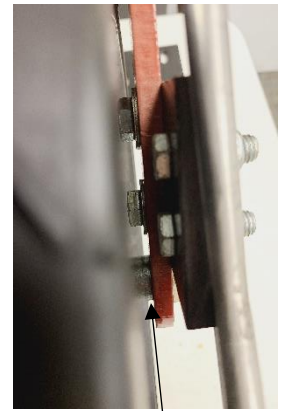
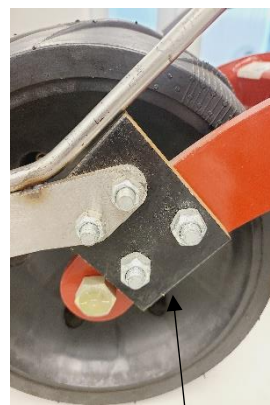
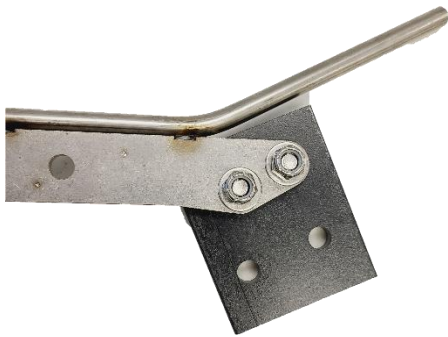


## STEP 1

LOCATE MOUNTING HOLES IN CLOSING FRAME.

## STEP 2

LINE UP HOLES IN STEEL MOUNTING WEDGE WITH HOLES IN TUBE.

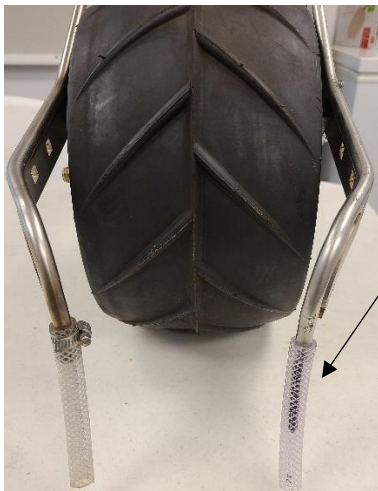


## STEP 3

Install 3/8" bolts and tighten. Repeat for other side.

## STEP 4

Line up bracket with two holes in closing frame. Install 7/16" bolts from the inside out with washers under heads. Install locknuts and tighten.



## STEP 5

Install supplied "vent" tubes on the exit end of the N Site tube. Check that all connections are tight. **Check that the spacing off center is at the desired spot for the volume selected.**



**\*CONSULT YOUR AGRONOMIST FOR PROPER PRODUCT USE, RATES, AND APPLICATION SPACING. GOOD COMMUNICATION WILL INSURE THE BEST OUTCOME AND SUCCESS FOR FERTILIZER TUBE USE.**

**\*R.E. SKILLINGS SUPPLIES INC IS NOT LIABLE FOR ANY DAMAGE OR HARM TO CROPS OR EQUIPMENT FROM THE USE OF THE N-SITE TUBE AND ASSOCIATED EQUIPMENT.**

THANK YOU FOR CHOOSING THE N-SITE TUBE FOR YOUR FERTILIZER PLACEMENT!