

WASHINGTON MASONIC NATION

THE BLUEPRINTS AND SYMBOLS OF LUCIFER'S PLAN FOR AMERICA

The Great Pyramid Pattern

The Washington Masonic Memorial complex layout is incorporated with a park. From a top view it can be seen as following the approximated layout of the Great Pyramid. Why the Great Pyramid is often used by the Luciferians on one level of application is that it is a holy 'Altar of YHVH' as depicted and inference in Isaiah 19:19. The dark minions seek to defile and replicate this design for their purposes and have encrypted this design, mathematics and sacred geometry to space and time. This sacred dimension spans also Biblical prophecy as the Great Pyramid blueprint is the universal and divine template of human history.

Sept 18, 1783 to Nov 1, 1923
= 51,177 days
or 140 years, 1 month, 14 days
This was **7** years from 1776.

Nov 1, 1923 to Sept 13, 2015 including end date
= **33,555** days

or **91** years, **10** months, 13 days
9110 = 911

The last day for the Stock Market rally will be on Sep 11, 2015
a **9-11**



Inverted elevation as the Memorial is higher than the pyramidion of the ground layout yet both pinnacles denote a 5776 code.

SOME CALCULATIONS

481 ft radius x 2
= 962 ft diameter

962 ft diameter x Pi (3.14...)
= 3022 ft Circumference

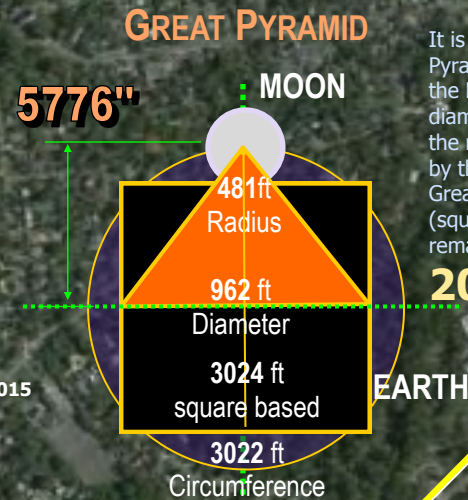
Moon radius = 1080 miles
Earth radius = 3960 miles

TOTAL **5040**

5040 miles = feet then

It is well researched that the Great Pyramid encapsulates the dimensions of the Earth and the Moon's radiuses, diameters and circumferences. If the number 5,040 is subtracted by the actual perimeter of the Great Pyramid at 3,024 ft (square based) then the remainder is

2016



2016
5776
6°
Washington Masonic Memorial

From
Base of Great Pyramid
to include Cap Stone
= **5776** inches
481 feet



The Washington Masonic Memorial building cornerstone was laid with the same trowel that Washington used to lay the cornerstone of the Capitol Building of Congress 7 years after 1776. The Masonic Memorial is only 148 ft shorter than the height of the Great Pyramid. If one takes the ratio and proportion of their mathematical value and equates them to years one can use the proportion to ascertain the secret codes of Lucifer's mathematics at play.

481ft = 5776 inches

481 - 333 = 148 difference

481 = 333
5776 x

481x = **1923**408 (the year 1923 was when the Memorial was started)

x = 3998.76 or 3999 rounded off

5776 - 3999 = **1777** (a 1 year anniversary from 1776)

King's Chamber

The Queen's Chamber

Ascending Staircase

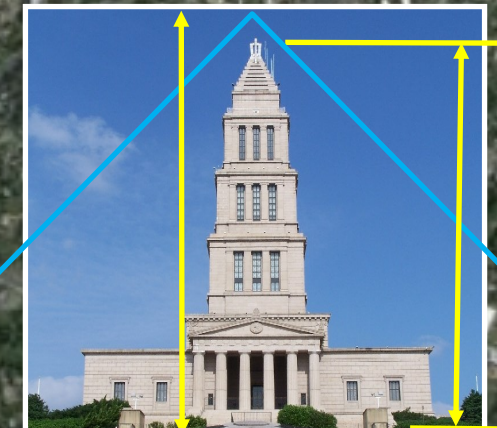
1776
The Pit

1776 yards
52.54 arcseconds
angle of Great Pyramid
.88 nautil miles
1.01 miles

What the Luciferians have used this template for also is to mark the rise and fall of their 'Phoenix' world empires that the USA is currently. Its beginning and end is enveloped with this blueprint of 1776 as it start and 5776 perhaps its end. If this is what the template is suggesting as seen in various Masonic Temples in sacred ley-lines, then the USA is about to be thrust into chaos to that the New Order of the Phoenix is to rise from its burned ashes.

GREAT PYRAMID OUTLINE

481ft **333ft**



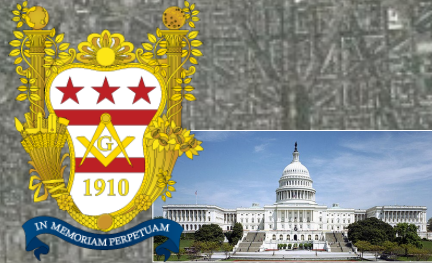
© Composition & Some Graphics by
LUIS B. VEGA
vegapost@hotmail.com
PostScripts.org
FOR ILLUSTRATION PURPOSES ONLY

SOME SOURCES
Chabad.org
GoogleEarth.com
TimeandDate.com
Wikipedia.com

WASHINGTON MASONIC NATION

SPIRIT OF ANTICHRIST GOVERNING THE NEW ATLANTEAN CAPITAL

The pyramid configuration is off by 6° and is interwoven by the snake that appears to hold the whole complex together. This would render the symbology of Lucifer, the Dragon from whom the coming AntiChrist and False Prophet derive their power. In the ancient pyramid complexes, the buildings like that of Chechen Itza were directly associated with the descending Shining Serpent. The pyramids were 9 steps in height as is the main pyramid of the Masonic Memorial to Washington; it incorporates the same principle of the 'Phoenix' running down the stairs of the pyramid. What the recurring them and dates of this is to occur on is the Year of Light 5776. This is when the Temple, the capstone comes down from Heaven to complete their Temple of Light. The Masonic Memorial has a mural of the Ark of the Covenant and how the Luciferians are salivating to have it be in their possession to present it to their Dark Lord Lucifer to sit on in the very Holy of Holies that the Memorial is constructed to represent, the anthropomorphic man of the Temple of Solomon.



Capitol Hill

333 arcseconds
5.55 nautical



Washington Monument

5,555 smoots



House of the Temple

233 arcseconds
(322code)
6.9 km
444 miles



Pentagon

Eyes of Lucifer

In gambling, snake eyes is the outcome of rolling the dice in a game and getting only one pip on each die. The pair of pips resembles a pair of eyes, which is appended to the term 'snake' because of the long-standing association of this word with treachery and betrayal. The dictionary of etymology traces that use of the term back to 1929, although it may be traced all the way back to the ancient Roman dice games, where 'Dogs' represented two ones. They referred to this as "the dog throw". In modern parlance, it refers to such a roll in any game involving dice. Because this is the lowest possible roll, and will often be a loser in many dice games, such as Craps, the term has been employed in a more general usage as a reference to bad luck. The odds of rolling snake eyes on two six-sided dice are 1-in-36. In some board games, such as Monopoly, house rules may decide that this roll earns the player a bonus due to it being rare and otherwise disadvantageous.'



Statue of Liberty



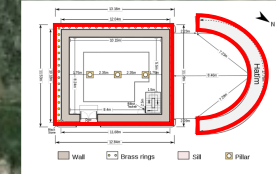
332 km
180 nautical miles
116 arcseconds to
Ground Zero (911)
2.23 miles (322)
3.60 km (360day/

Washington Masonic Memorial

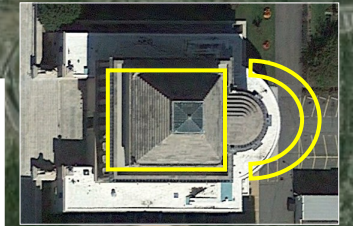
The pyramid configuration is off by 6° and is interwoven by the snake that appears to hold the whole complex together. This would render the symbology of Lucifer, the Dragon from whom the coming AntiChrist and False Prophet derive their power. In the ancient pyramid complexes, the buildings like that of Chechen Itza were directly associated with the descending Shining Serpent. The pyramids were 9 steps in height as is the main pyramid of the Masonic Memorial to Washington; it incorporates the same principle of the 'Phoenix' running down the stairs of the pyramid. What the recurring them and dates of this is to occur on is the Year of Light 5776. This is when the Temple, the capstone comes down from Heaven to complete their Temple of Light. The Masonic Memorial has a mural of the Ark of the Covenant and how the



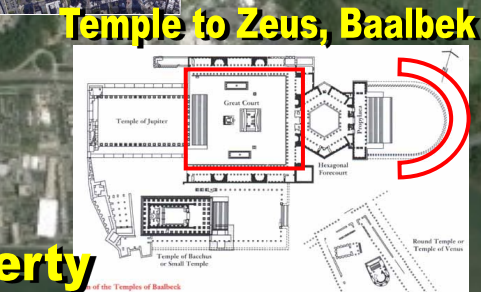
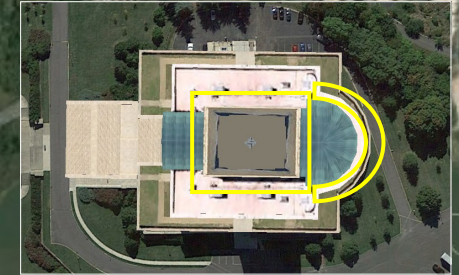
The Kaabah, Mecca



House of the Temple



Washington Masonic Memorial



The pyramid configuration is off by 6° and is interwoven by the snake that appears to hold the whole complex together. This would render the symbology of Lucifer, the Dragon from whom the coming AntiChrist and False Prophet derive their power. The pyramid of the Memorial tower has 9 step like that of most ancient pyramids found in various parts of the world. All inclusive is 13 steps that is depicted in the reverse Seal of the USA.

From Mecca to Memorial
=6,632 miles



© Composition & Some Graphics by
LUIS B. VEGA
vegapost@hotmail.com
www.PostScripts.org

MAIN SOURCES
Chabad.org
GoogleEarth.com
TimeandDate.com
Wikipedia.com

FOR ILLUSTRATION PURPOSES ONLY

WASHINGTON MASONIC NATION

WORKERS OF INIQUITY MASQUERADING AS AGENTS OF LIGHT

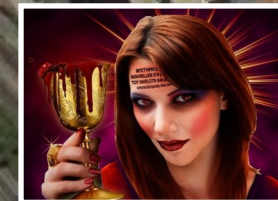
The pyramid configuration is off by 6° and is interwoven by the snake that appears to hold the whole complex together. This would render the symbology of Lucifer, the Dragon from whom the coming AntiChrist and False Prophet derive their power. In the ancient pyramid complexes, the buildings like that of Chechen Itza were directly associated with the descending Shining Serpent. The pyramids were 9 steps in height as is the main pyramidion of the Masonic Memorial to Washington; it incorporates the same principle of the 'Phoenix' running down the stairs of the pyramid. What the recurring them and dates of this is to occur on is the Year of Light 5776. This is when the Temple, the capstone comes down from Heaven to complete their Temple of Light. The Masonic Memorial has a mural of the Ark of the Covenant and how the Luciferians are salivating to have it be in their possession to present it to their Dark Lord Lucifer to sit on in the very Holy of Holies that the Memorial is constructed to represent, the anthropomorphic man of the Temple of Solomon.

The Rapture Event?

SOLAR ECLIPSE A partial solar eclipse occurs on Sep 13, 2015	
TYPE OF Jacob's Ladder	YEAR 5776 stars Sep 13, 2015 Great Pyramid Pyramidion 5776 inches
POSSIBLE RAPTURE EVENT Apparent translation of Bride of Christ	APPARENT BLAZING COMET Sudden Destruction for the unawares
ADVENT OF ANTICHRIST A revealing and presentation	

ISIS

LUCI THE LIGHT BEARER



5776

THE SERPENT

The Dragon coiling down the pyramid like the Shining Serpent of Chechen Itza steps on the Spring Vernal Equinox. The symbology is a reversed rendition of the Phoenix rising up to the capstone.

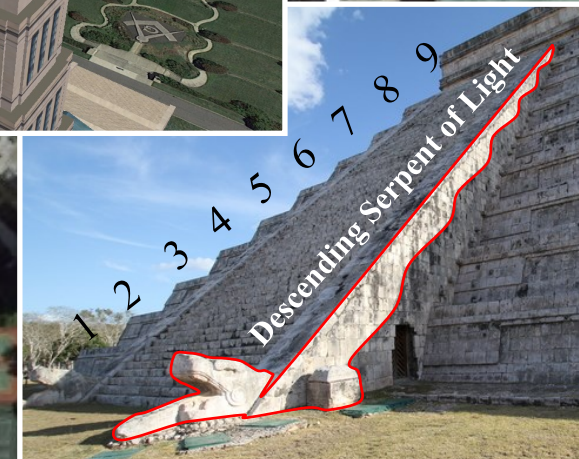
THE CHALICE



It is from the capstone of the All Seeing Eye of Lucifer that the spider weaves down to connect and nourish the Anti-Christ womb to be birthed. The Chalice is what contains the blood, in this case for the Luciferian, it has been the Blood of the Saints. The 'Great Work' of Lucifer's servants perhaps will be completed in 5776 perhaps that the capstone represents from the Great Pyramid pattern of the pyramidion. The 5776 is also inverted as that is the latitude of the point at which the pyramidion of the Masonic Memorial is centered on.

Pyramidion

9 levels



5776

Lucifer's Eye-Stone 'M A S O N S'

Bless Our Work

Alluded to having Right eye blinded in Angelic Conflict with Arch Angel Michael.

72 Blocks | 13 Levels

Ancient occult symbol

spells out "MASON"

MAY 1, 1776



New World Order

THE SPIDER

5776 - 1776 = (4)000

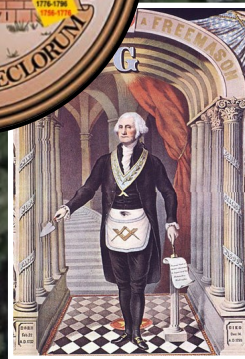
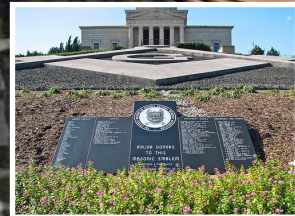
Φ

Φ



1776

TEMPLE TO JUPITER



The black spider is a clever marking of several Luciferian esoteric symbols in one. From an eastern perspective, the complex depicts a spider that is nourishing or birthing the Masonic Memorial building. It is in phi ratio. From a western perspective, the complex conjures up a Chalice that mock the LORD's Last Supper. In many Satanic human sacrificial rites, the Chalice is used to drink the victim's blood from. The next symbol encrypted is the outstretched owl that is the symbol of Molech and is associated with Isis, Minerva and Diana, all the same. The spider appears to be weaving down the web line from the capstone that gives it its authority and work. The Chalice is a symbol for the womb from where the AntiChrist is to be birthed from, spewed out of the mouth like the demonic Frogs of the book of Revelation that the Beast and False Prophet produce.

© Composition & Some Graphics by
LUIS B. VEGA
vegapost@hotmail.com
PostScripts.org

SOME SOURCES
Chabad.org
GoogleEarth.com
TimeandDate.com
Wikipedia.com

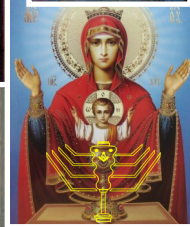
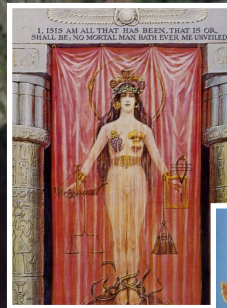
FOR ILLUSTRATION PURPOSES ONLY

WASHINGTON MASONIC NATION

MYSTERY BABYLON MOTHER OF HARLOTS CUP FULL OF SAINTS' BLOOD

*'I, ISIS am all that has ben,
that is or shall be; No Mortal
man hath ever me unveiled.'*

ISIS



ANTICHRIST

Being 'birthed' by
the nector of the Spider's venom.

The chalice is a mockery of the cup of redemption Jesus last drank from at the LORD's Supper. The owl is one of the symbols of Moloch, the god of abortion as in baby sacrifices. The spider is one in which its venomous bite will paralyze its victims as with sin as it sucks the life of its host. Such have the Mason with America.

MASONIC MEMORIAL

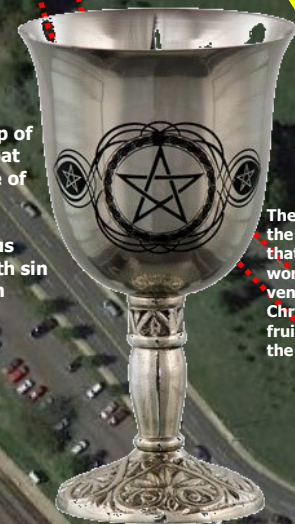
Anthropomorphic AntiChrist

The Luciferian false religion of the Masons have copied the Temple to Washington in a pretext to honor the Father of the Nation. Foremost Washington was a Mason. For a Mason, such an office and calling is above any other, including President of the USA. The goals supersede that of the Republic and/or of its citizens. The Great Work of a Mason is to Build Lucifer his Temple on Earth, to enthrone him in the chair of Jupiter, Zeus as he had in Heaven and in Pergamum.

THE WHORE OF BABYLON

The Luciferian false religion of the Masons and Roman Catholics use the imagery of pseudo-Christian icon to mask their Light Bearer god, Lucifer they worship. This 'Virgin' is not Mary, the mother of Jesus but the goddess ISIS, aka Venus, Lucifer in drags that appears often in apparitions and even shed tears of blood in eyes, hands and feet. It is a deception imposed against the ignorant masses. This Harlot is of Babylonian Mystery religion of Lucifer that is supported by the Serpent, the Dragon, the Beast she rides.

The chalice is a womb of which the Babylon Mystery Religion will birth and support the coming birthing of the AntiChrist from the Chalice that is a n encrypted womb. Coincidentally, the hand stances of both are in the form of the Spider's legs. Again a picture of who is nourishing and developing this AntiChrist until it is born.

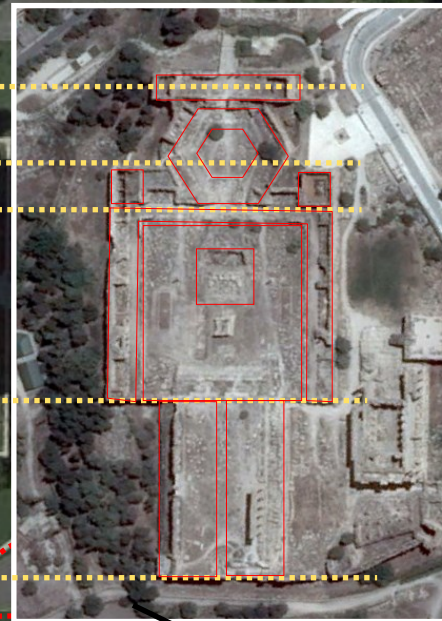


The spider is descending from the capstone, the 'Eye of Lucifer' that will be revealed to the world one day. The spider's venom has produced the Anti-Christ as if it has nourished it to fruition and eventual birth as the chalice symbolizes.

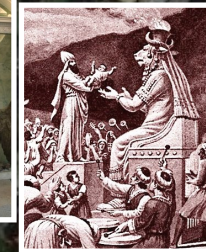
Red Dragon giving the power to the AntiChrist by way of the Spider as he descends to take his seat on the throne that his Builders have made for him, i.e., the 3rd Temple in Jerusalem and between the Cherub. In essence, a King Cherub seeking to rule all this is and above YHVH.

THE SHINING SERPENT

All-Seeing Eye of Lucifer



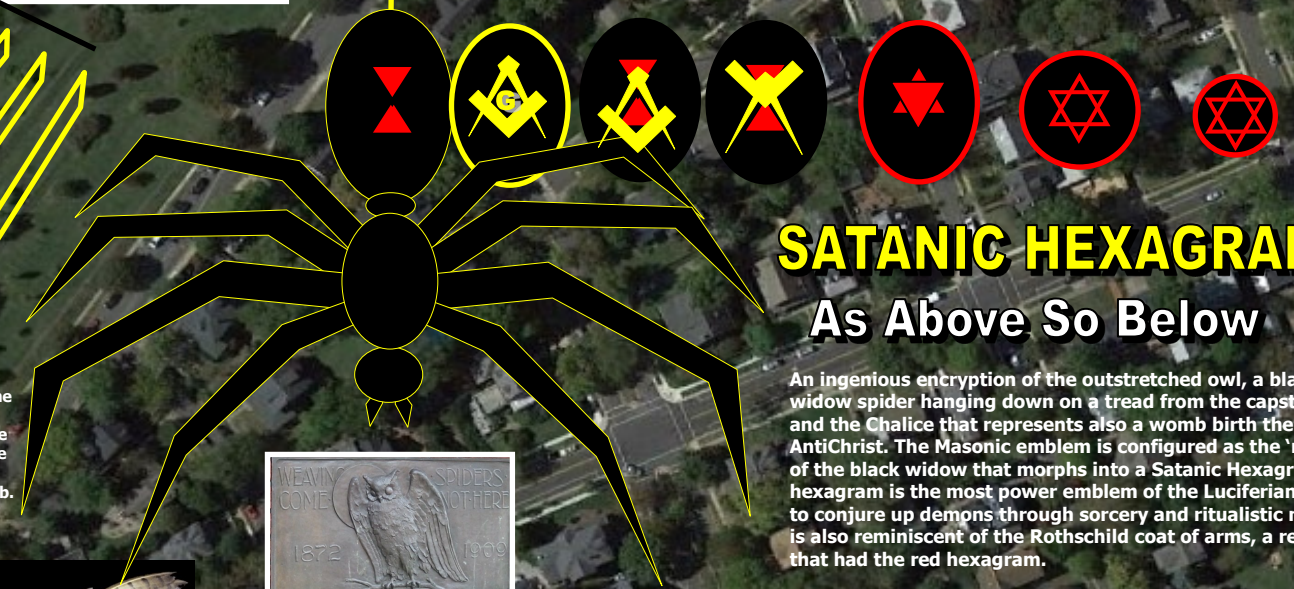
Temple at Baalbek



- Zeus
- Ba'al
- Osiris
- Lucifer

The Luciferians in part derive their lust for power at the expense of the innocence. The blood of over 70 million unborn in the USA alone has been the fuel for the Satanic mode of operation that the American society has capitulated its morals to. At the expense of a 'comfortable' lifestyle and standard of living, America has killed its own that has had to be replaced by 1000 of immigrant children and families. Such secret societies use a cloak of righteous and 'Christian' virtues and family values so far as they provide philanthropy to children's causes to appease their condemned conscious for the heinous acts of sin they do in the dark. See *The Franklin Cover-up: Child Abuse, Satanism, and Murder in Nebraska* by John W. DeCamp.

ENCRYPTED BLACK WIDOW



SATANIC HEXAGRAM

As Above So Below

An ingenious entryption of the outstretched owl, a black widow spider hanging down on a tread from the capstone, and the Chalice that represents also a womb birth the AntiChrist. The Masonic emblem is configured as the 'mark' of the black widow that morphs into a Satanic Hexagram. A hexagram is the most power emblem of the Luciferian occult to conjure up demons through sorcery and ritualistic magic. It is also reminiscent of the Rothschild coat of arms, a red shield that had the red hexagram.



Weaving Spiders Come Not Here
BOHEMIAN GROVE

© Composition & Some Graphics by
LUIS B. VEGA
vegapost@hotmail.com
PostScripts.org
FOR ILLUSTRATION PURPOSES ONLY

SOME SOURCES
Chabad.org
GoogleEarth.com
TimeandDate.com
Wikipedia.com

Google earth

WASHINGTON MASONIC NATION

THE SECRET LEY LINES OF THE LUCIFERIAN BROTHERHOOD OF DARKNESS

Lucifer's Eye-Stone

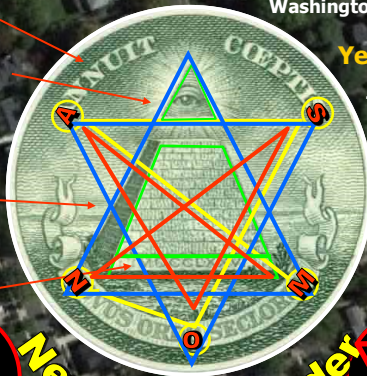
Bless Our Work

Alluded to having Right eye
blinded in Angelic Conflict
with Arch Angel Michael.

72 Blocks | 13 Levels
Ancient occult symbol

spells out "MASON"
MAY 1, 1776

57.76"
2016



New World Order

2016

The Luciferians seek to copy the Divine Blueprint of the Throne of YHVH in Heaven. The Temple Mount is set to the divine measurements of prophetic time.

The square ft of 2016 is signaling the time in which the Temple of Masons will be erected. This years equals to the Year of Light that the Washington Masonic Memorial is built after.

Year 2016 $\sqrt{x} = 44$

The number 44 perhaps is alluding to the 44th US President that might be not only the last but the 'One' that is to be the Son of Perdition, the AntiChrist. As it is the US President is very Anti-Christian in all his support of all that is immoral and against YHVH's laws of morality.

According to GoogleEarth, the coordinates that correspond to the Washington Masonic Memorial is

38° 48'27.01" latitude 77° 03'57.62" w

This illustration supposes the year to latitude theory in that the 57.62" is equal to the corresponding year of 5762 in Jewish reckoning of time. If this year is translated to the Gregorian calendar date, it is equal to September 11, 2001.

The primary pyramid outline is 1 mile in length and it incorporates a myriad of Luciferian encrpyed symology. The pyramid ley lines incorpaotes the year to latitued theory correspondance. It marks the time it has taken for their 'Great Work' to be accomplished and why the construction of the Maseonic Memorial has been accompeshe in statges. It follows the plan much like the city grid of the District of Columbia has also.

The Washington Masonic Memorial is a Temple that is 'clocking' or keeping time of when the real or 3rd Temple in Jerusa in will be completed as it will be ushered by the AntiChrist. It will be 3rd Temple in whelhc Lucifer encaranates into the AntiChrist to sit in the Ark of the Covenant. In the Holy of Holies.

On April 20, 1909 the Park held a celebration of the inauguration of the 1st President, George Washington. The same trowel was later that Washington used in to anoint the cornerstone of the Capitol Hill in September 18, 1783 to commence the work of the Masonic Temple memorial. This date was on November 1, 1923. The work was considered completed in 1970. The Washington Masonic Memorial is the only Masonic Temple in which all other Temples in the Republic are obligated to pay a fee to help maintain it.

120th Anniversary
Washington's Innauguration

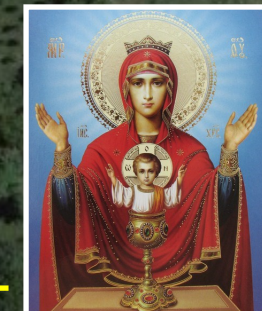
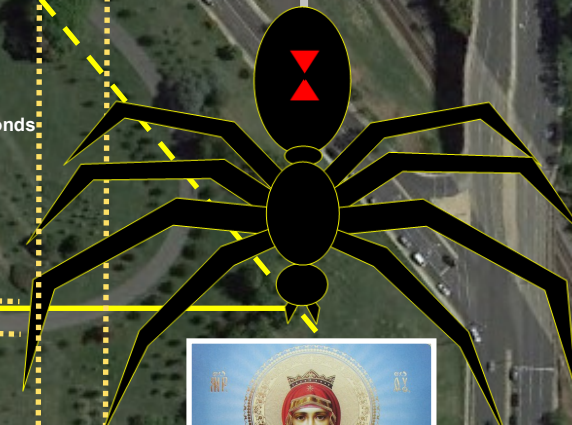
Apr 30, 1909

'5776'



1776

57.76"



The Spirit of ZION
THEME OF LONDON OLYMPICS

The Jubilee code is encrypted in the design as the year 5776 will synchronize to a Jubilee year.

1922 + 49 = 1971

Building considered completed. The London Olympics gave a glimpse of the Luciferian celebration of their Phoenix or Lucidfer that rose from the Rosecrusian Cross. This is in the same pattern as the capstone and black spider masked as a dove, an owl. The Washington Masonic Memorial is on a hill with an inversion of the pyramid, oppostie the capstoen in elveation.



1923 to 1970

5776 - 1922 = 49 years Jubilee Pattern/Code

2015 - 49 years = 1967

Year the Temple Mount in Jerusalem was liberated The Temple mount is 2016 square feet

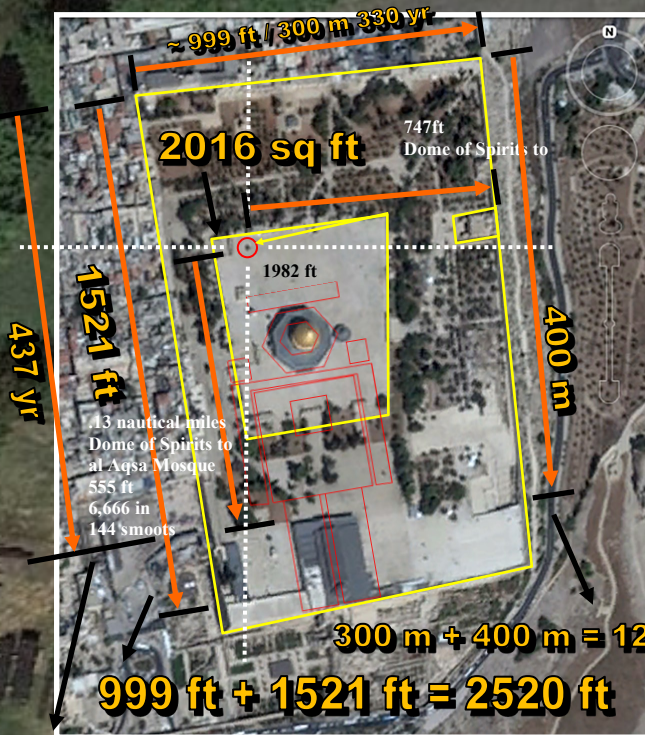


The supposed Virgin 'Mary' is not the 'Mother of GOD'. She is a masked Mystery Babylon Harlot associated with the 'Cup' or Chalice that is full of the blood of the martyred Saints or followers of the Lamb, Jesus throughout all of human history.

WASHINGTON MASONIC NATION

THE SECRET LEY LINES OF THE LUCIFERIAN BROTHERHOOD OF DARKNESS

TEMPLE MOUNT

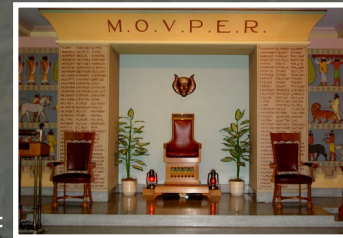


The 'throne' to Lucifer in his Temples of so called Light. Jesus exposed these places of gatherings as Synagogues of Satan. The 'Great Work' of the Builders is enthrone their Christ Cherub want-to-be god in the Holy of Holies. The Bible also predicts that this will occur at a future time, perhaps in the 3rd Temple and once the Ark of the Covenant is revealed to maybe coincide with the 'confirming of the Covenant'.

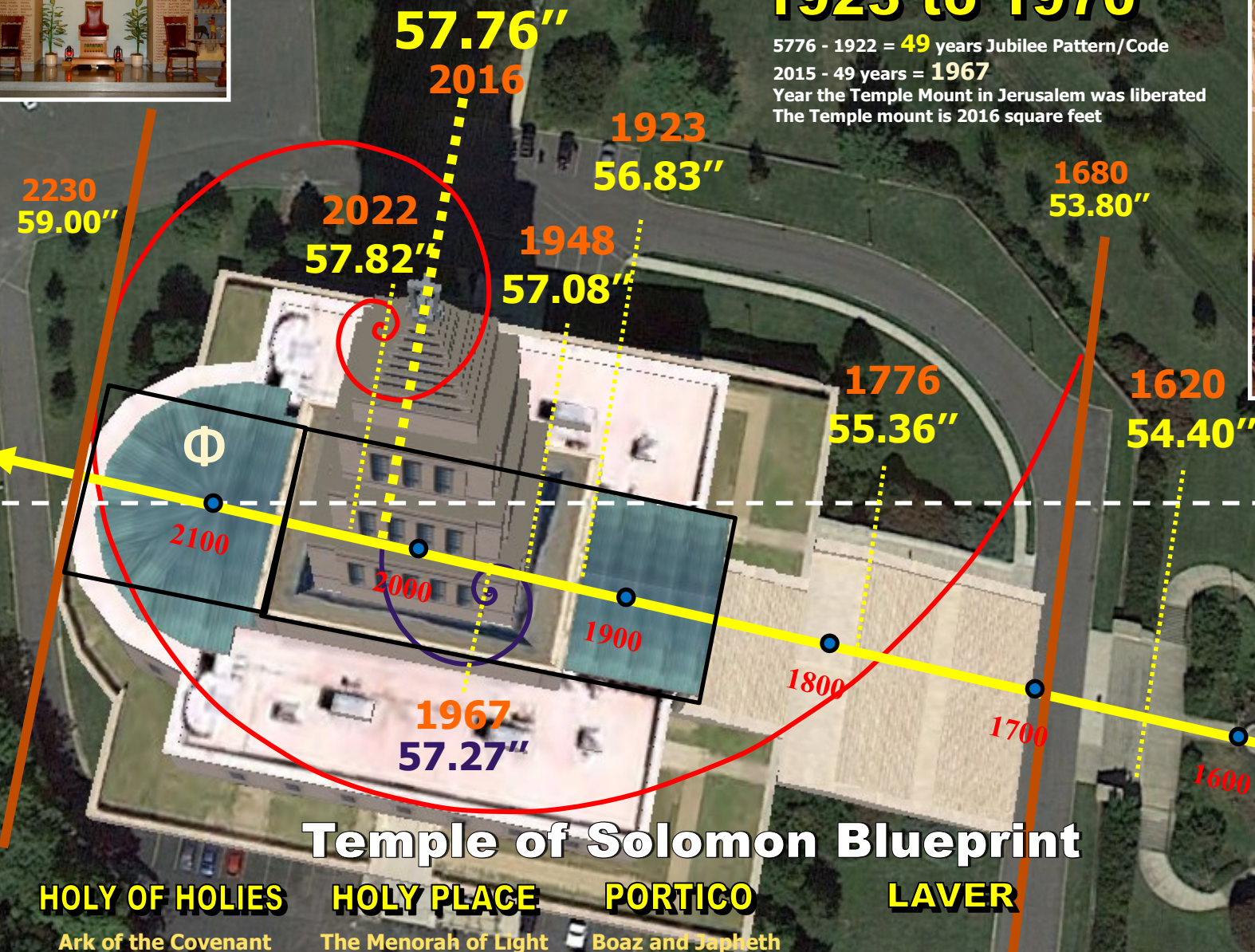


Will the year 5776 that is encrypted in Masonic buildings see the 'light of day' when the 3rd Temple in Jerusalem will be constructed to eventually cause Lucifer to sit on the Throne of YHVH, that is the Mercy Seat of the Ark of the Covenant? As in the prior Temples of YHVH, when the Glory departed, the darkness filled the vacuum. Perhaps when the Rapture takes place is when the darkness of the AntiChrist will fill the Earth.

Lucifer, the Blazing Star wants your children. Some more Adam's and Eve's to seduce, lie to, use and ultimately destroy because it was 1 Child, Jesus that destroyed Lucifer's Great Work.



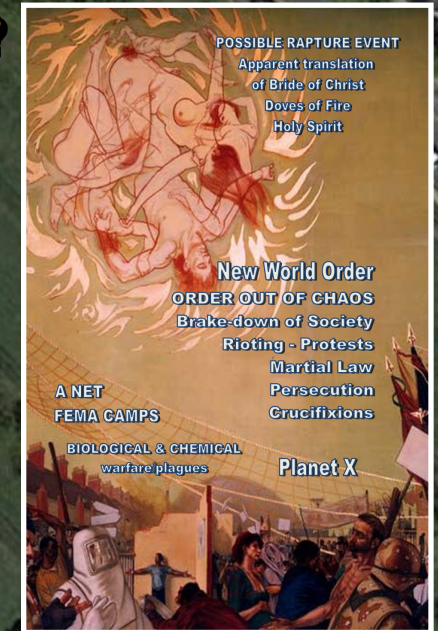
PYRAMIDION



The Rapture Event?

1923 to 1970

5776 - 1922 = 49 years Jubilee Pattern/Code
2015 - 49 years = 1967
Year the Temple Mount in Jerusalem was liberated
The Temple mount is 2016 square feet



120th Anniversary
Washington's Innauguration
Apr 30, 1909

The same trowel that George Washington used to dedicated the Corner Stone was used to commemorate the Corner Stone of the Washington Masonic Memorial.

WASHINGTON MASONIC NATION

THE SECRET LEY LINES OF THE LUCIFERIAN BROTHERHOOD OF DARKNESS

Lucifer's Eye-Stone

Bless Our Work

Alluded to having Right eye
blinded in Angelic Conflict
with Arch Angel Michael.

72 Blocks | 13 Levels
Ancient occult symbol

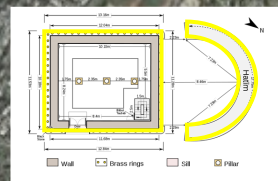
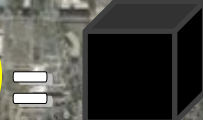
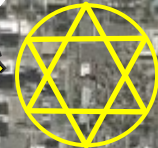
spells out "MASON"

MAY 1, 1776

'5776'
2016 yards



New World Order

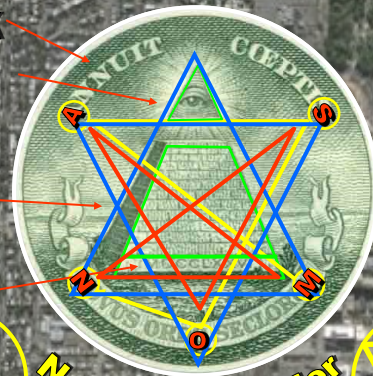


Kaaba Pattern

The House of the Temple follows the same blueprint
of the Kaaba layout of a square main section or
building with adjacent rounded arc to its side. This
study suggests that the years from the White House
to the Masonic Temple correlated to years of time.

2016

'M A S O N S'



Capitol Hill

The occultic configuration from the White House
to the House of the Temple is that of a 3-
dimensional cube. This has direct connotations
to the Islamic Kaaba in Meccas that is used to
worship Allah but in the occult, it is Jupiter or
Lucifer that is inferred. The Cube is interwoven
within the hexagram and pentagram. These are
signature emblems of the demonic occult when
used to conjure up Fallen Angels and demons
used in sorcery and human sacrifices.

Missing Pyramid



The House of the
Temple has the classic
unfinished pyramid as
seen then their Dollar
bill with the hovering
Eye of Lucifer as the
pyramidion. The coming
down truncated
pyramid is set atop
the Cube of Saturn.

G

The House of the Temple incorporates the
signature letter 'G' that serves as the focal
point of the Masonic Square and Compass.
In this case concerning the layout of the
Washington DC street grid, the 'G' also
serves as the focal point with the very Tem-
ple.

Washington Monument

White House

'Kaaba' Square

Broken Pentagon
WESTWARD

House of the Temple

Synagogue of Satan

Square & Compass



The letter 'G' is the 7th
letter in the Roman
alphabet. The House of
the Temple is placed in
its precise geometric
location in relationship
to the White House as
it is meant to influence
and rule. The very
apex of the Masonic
compass as well as the
Satanic pentagram
and hexagram
converge on the White
House.

2016 yards
= year 2016
as in 5776
Year of Light

Although it is everted, it
follows the duplicitous na-
ture of the law of opposites.
It also follows the broken
pentagram as the westward
extension of the square is no
longer visible from the air



Oval Office

This illustration suggests that the floor plan of the Oval Office is layout in a
the similar Masonic signature of the unfinished pyramid of 13 steps with the
14th corresponding the capstone that is to descend from a portal or gate-
way. The number 13 is associated with rebellion and all that is vile.

2016
yards

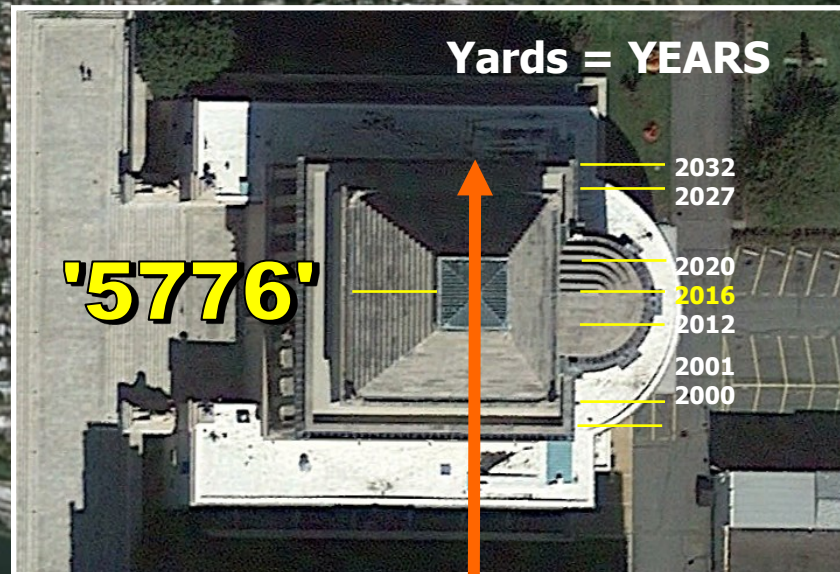
from
White House



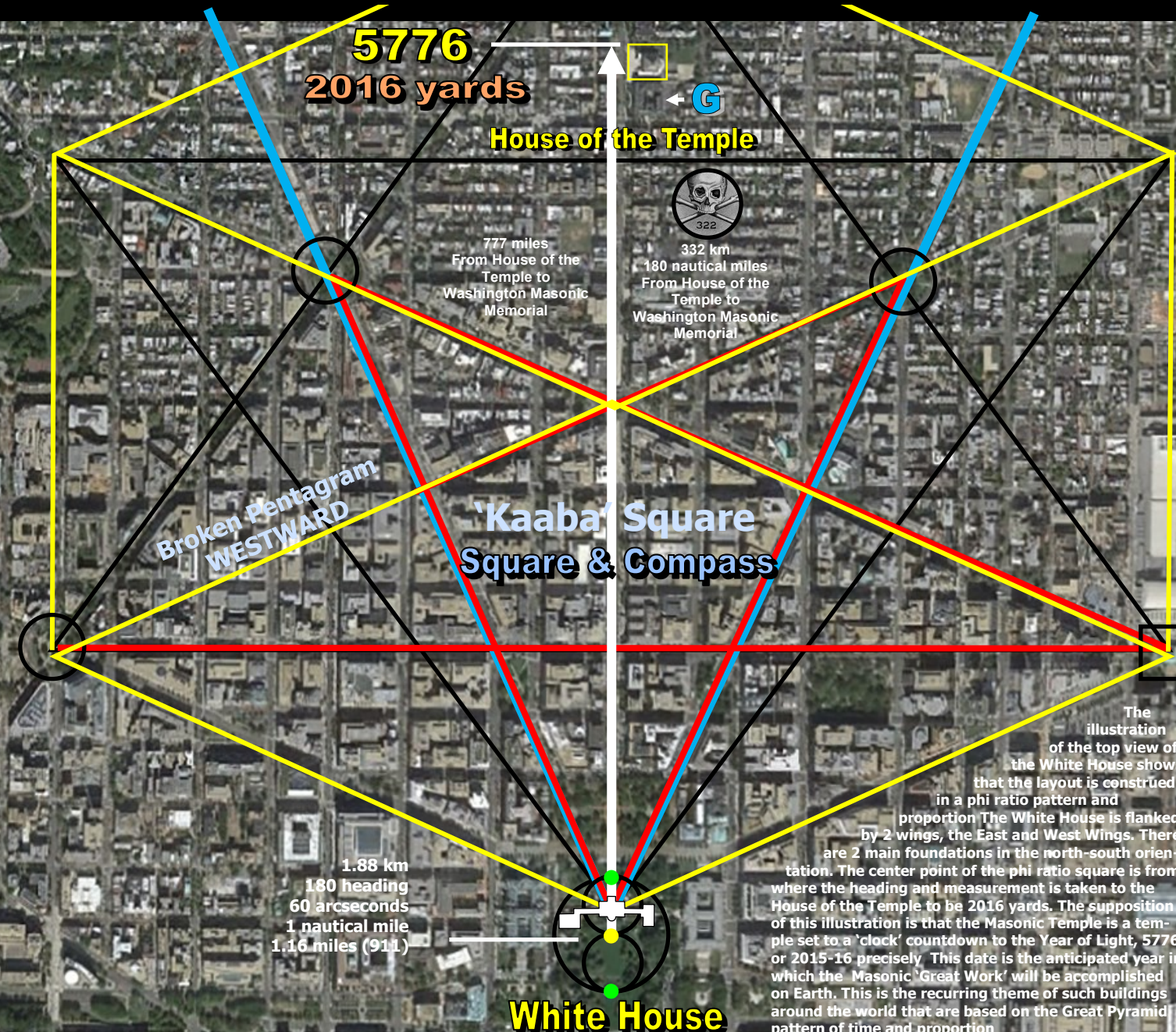
WASHINGTON MASONIC NATION

THE SECRET LEY LINES OF THE LUCIFERIAN BROTHERHOOD OF DARKNESS

HOUSE OF THE TEMPLE Synagogue of Satan



Yards from White House center point between the 2 fountains in the north and south of building. The extrapolation of the years from the years is derived from the same principle of the Latitude to Year theory. Such the case being, the Masonic temples venerating their fallen Cherub Lucifer have encoded the year 5776, into the ley lines, sacred Gematria, and city grid layout. The House of the Temple is such an example of this pinnacle Year of Light that based on the overwhelming evidence from other similar pyramid and Masonic architecture, the year 5776 in Jewish reckoning is tied to the manifestation of the 3rd Temple in Jerusalem as all the Masonic Temples are orientated and encrypted with its phi ratio, dimensions and occult inferences.



In one interpretation of the layout of the House of the Temple, the composition resembles that of the Kaaba of Mecca that the Muslims venerate to their god Allah. Some suggest that Islam and Freemasonry have their same origin in the Luciferian secret doctrines of the Mystery Schools of Religion. In the Bible these are referred to as the Doctrines of Demons.



White House Φ

