



MALDIVES  
BLUE FORCE ONE 





# MALDIVES

## BLUE FORCE ONE





# MALDIVES BLUE FORCE ONE



The boat which we have called commercially as **MALDIVES BLUE FORCE ONE** has been awarded twice by the “**LIVEABOARD ASSOCIATION OF MALDIVES**” as “**THE BEST BOAT BUILT IN MALDIVES**”. Considered by the main Diving Travel agencies as one of the **TOP TEN** live aboard of the World.

- 12 excellent cabins for 24 passengers distributed in 7 deluxe cabins, 1 master cabin, 2 junior suite & 2 master suite.
- Length: 42 meters (138 ft).
- Beam: 11 meters (36 ft).
- Engine: Caterpillar 750 CV.
- Water: 2 desalination plants, up to 24 ton /day.
- 3 Generators: 2 Caterpillar 72 KW and 1 Isuzu 55 KW.
- 2 air conditioning groups.
- Electricity 24 hrs, 24 V & 220 V.
- Navigation: 1 36/48n.m Radar, 1 Ecosounder, 3 GPS LCD colour, 1 Chartplotter Raymarine.
- Communications: Radiotelephone, VHF, DSC, satellite phone.
- Security: fire alarm, fire-extinguishing system, defibrilator.





# MALDIVES

BLUE FORCE ONE 

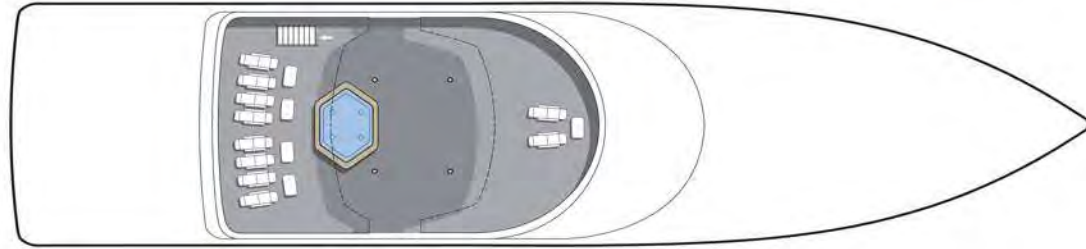


# MALDIVES

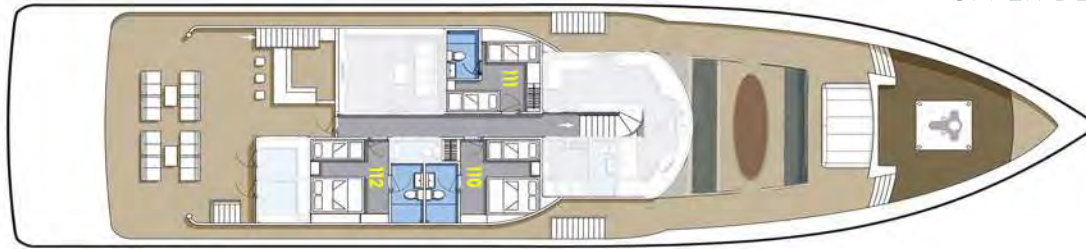
## BLUE FORCE ONE



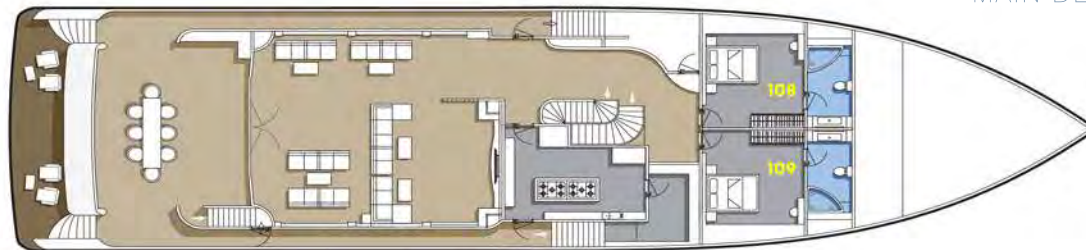
SUN DECK



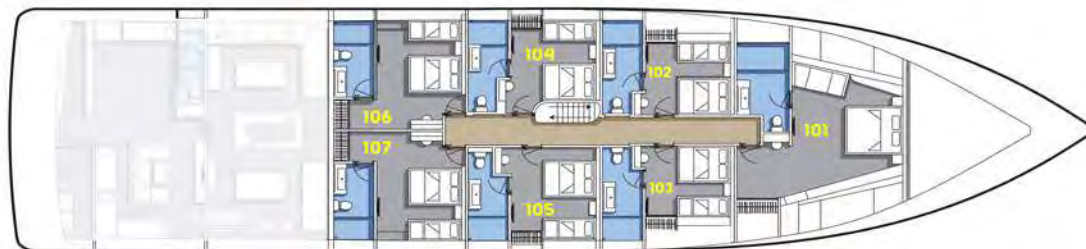
UPPER DECK



MAIN DECK

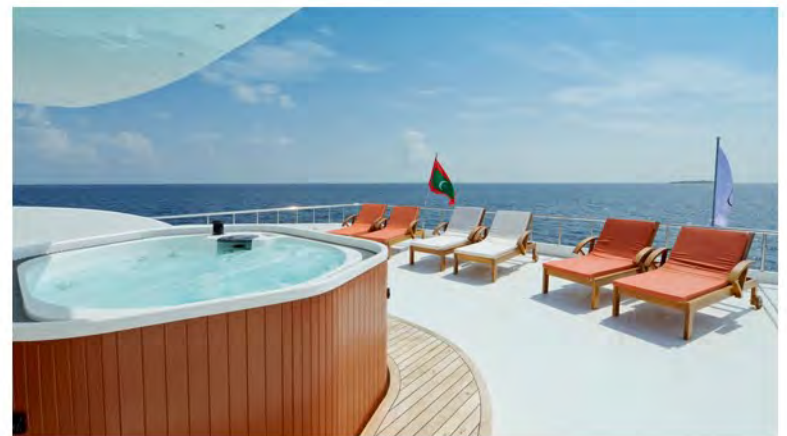


LOWER DECK





MALDIVES  
BLUE FORCE ONE 





# MALDIVES

BLUE FORCE ONE 





MALDIVES  
BLUE FORCE ONE 







MALDIVES  
BLUE FORCE ONE 

Dedicated camera table.





# MALDIVES

## BLUE FORCE ONE

Master Suite

108

109

## CABINS

12 excellent cabins for 24 passengers distributed in 7 deluxe cabins, 1 master cabin, 2 junior suite & 2 master suite. All of them with complete bathroom, shower, hair dryer, air conditioning, TV screen, safe box and towels.

### Lower deck:

- 1 Master Cabin with double bed, bathroom and shower (cabin 101)
- 6 Deluxe Cabins with double bed and single bed, bathroom and shower (cabins 102 to 107).

### Main Deck:

- 2 Master Suite with sea view, double bed, bathroom, bathtub and shower (cabins 108 & 109).

### Upper Deck:

- 2 Junior Suite with sea view, double bed and single bed, bathroom and shower (cabin 110 & 112).
- 1 Deluxe Cabin with 2 sea view, single beds, bathroom and shower (cabin 111).



Main  
Deck



MALDIVES  
BLUE FORCE ONE 

Master Suite

108

109



Lower  
Deck



MAILDIVES  
BLUE FORCE ONE 

Master Cabin 101



Lower  
Deck



MALDIVES  
BLUE FORCE ONE 

Deluxe Cabin 102 103 104 105 106 107



Upper  
Deck



# MALDIVES

BLUE FORCE ONE 

Junior Suite

110

112



Upper  
Deck



MALDIVES  
BLUE FORCE ONE 

Deluxe Cabin 111





# MALDIVES

## BLUE FORCE ONE



### DIVING, DHONI & DINGHI

- New dhoni (launched on October 2020).
- 23 m (76 ft) in length x 7 m (23 ft) in beam.
- Aluminum S80 tanks DIN/ INT. Optional: S100 tanks and rental equipment.
- 3 Compressors. 2 Membrane NITROX system.
- Oxygen, defibrillator.
- Tender boat (dinghy), Kayak & paddel SUP.







MALDIVES  
BLUE FORCE ONE 



# MALDIVES

BLUE FORCE 



[www.blueforcefleet.com](http://www.blueforcefleet.com)  [info@blueforcefleet.com](mailto:info@blueforcefleet.com)



*Maldives  Blue Force One*



*Red Sea  Blue Force 2*



*Maldives  Blue Force 3*

FOLLOW US ON

