

Weekly Major Equity Indexes Charts Newsletter

April 30, 2018

The Weekly Equity Indexes Charts Newsletter provides Cornelius Luca's trade ideas, model signals, and absolute charts

© 2018 Luca Global Markets, LLC. All rights reserved. This content is provided as general information only and does not constitute investment advice or a representation that any investment, security or other product is suitable for any person. This content reflects the opinions only of the author and cannot be interpreted as advice.

This content is the intellectual property of Cornelius Luca. Any copying, distribution or redistribution of this content is expressly prohibited without the prior written consent of Cornelius Luca.

Cornelius Luca shall not be liable for any errors in the content, or for any actions taken in reliance thereon.

Trade Ideas

- G7: Long S&P 500 *only while above* the 21-day exponential moving average
- G7: Long FTSE *while above* the 5-day exponential moving average
- BRIC: Long India's Sensex *while above* the 5-day exponential moving average
- Middle East: Long Saudi's Tadawul تداول *while above* the 21-day exponential moving average

G7 Equity Indexes

Model Signals - Daily & Weekly

G7 Index	Daily Model	since	Daily Bias (> or < 21-day EMA)	Daily Risk	Weekly Model	since	Weekly Bias (> or < 21-week EMA)	Weekly Risk
S&P 500	L	25-Apr	slightly bullish	slightly bullish	L	9-Apr	sideways	slightly bullish
Germany DAX	L	26-Apr	slightly bullish	slightly bullish	L	30-Mar	sideways	slightly bullish
UK FTSE	L	26-Apr	bullish	slightly bullish	L	30-Mar	slightly bullish	slightly bullish
France CAC	L	26-Apr	bullish	bullish	L	30-Mar	slightly bullish	slightly bullish
Italy Borsa Italiana	L	27-Apr	slightly bullish	slightly bullish	L	2-Apr	slightly bullish	slightly bullish

Source: Proprietary Luca Global Markets, LLC Model

S&P 500

Comment:

Long S&P 500 only while above the 21-day EMA

- Status quo. The S&P 500 continues its consolidation phase around its 21-day EMA within the medium-term symmetrical triangle
- More information is needed
- Initial resistance: 2,717
- Further resistance: 2,802 & 2,873
- Immediate support: 2,613
- Further support: 2,554, 2,532 & 2,469
- Fast stochastics: slightly bullish
- MACD: neutral

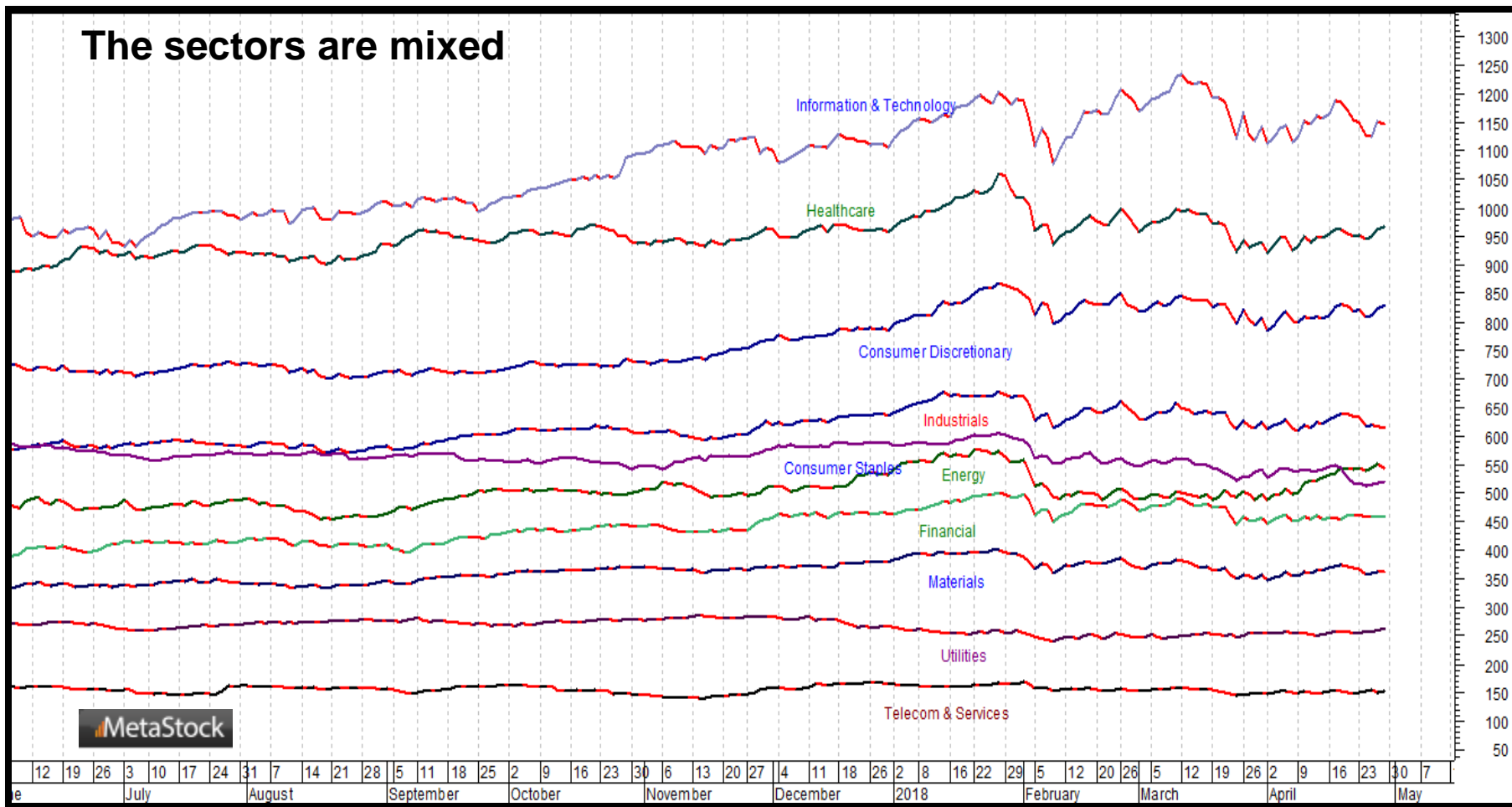


CQG Inc. © 2018 All rights reserved worldwide. <http://www.cqg.com>

Mon Apr 30 2018 10:15:00, CQG 18.12.8063

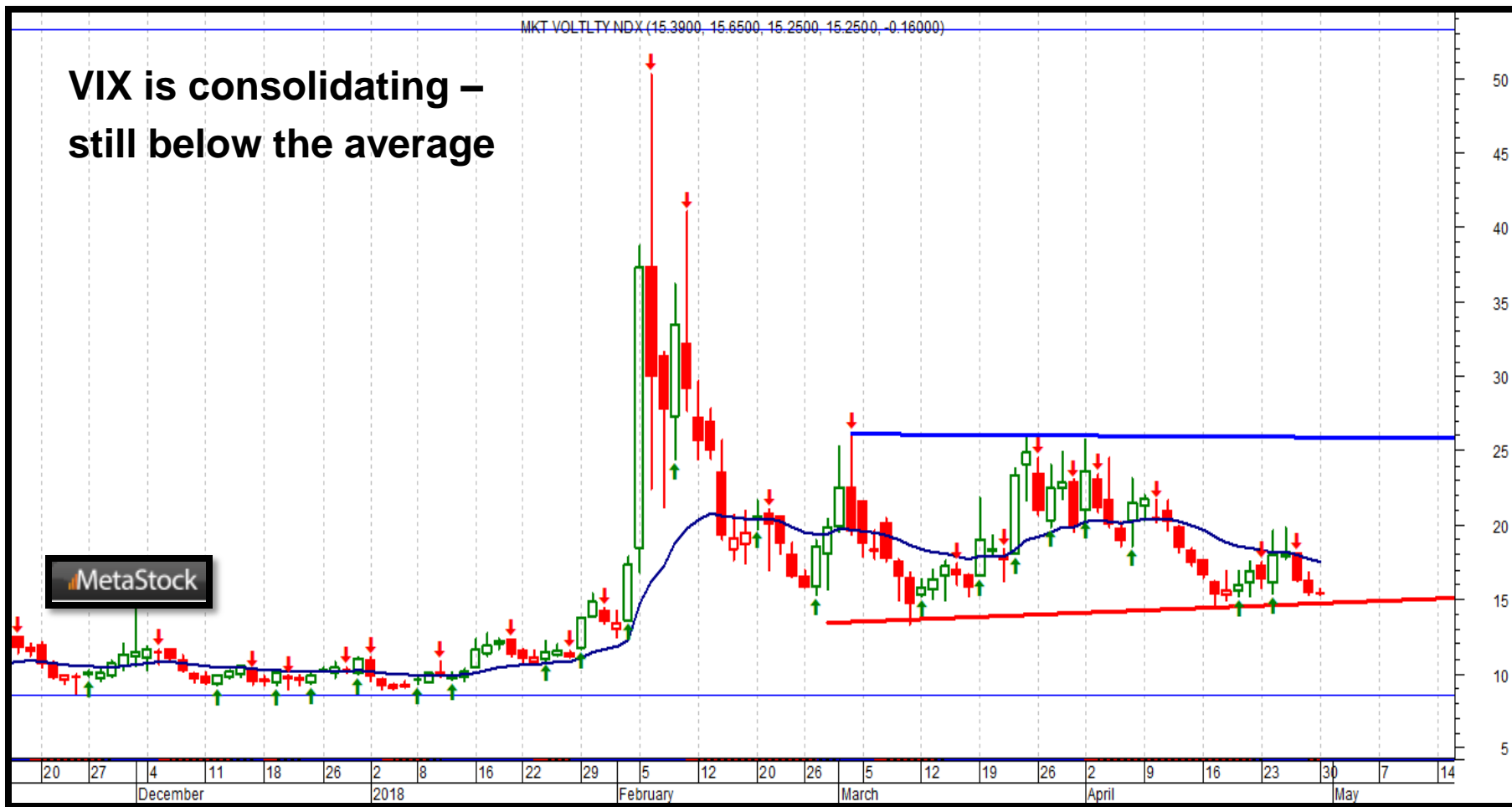
S&P 500 Sectors

The sectors are mixed



S&P 500 - VIX

VIX is consolidating – still below the average

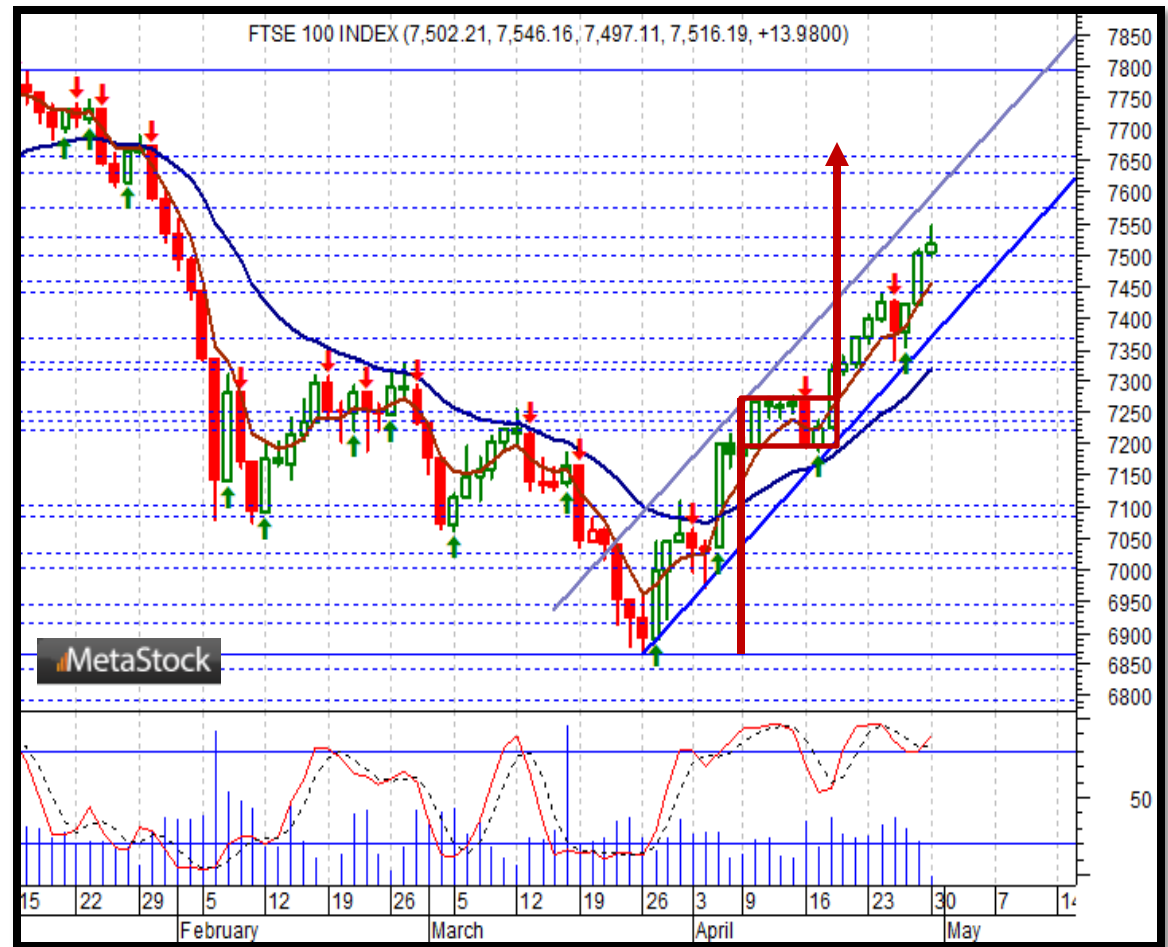


G7 Equity Index Trade Idea

Comment:

Long FTSE *while above the 5-day EMA*

- The FTSE, which bottomed out on 3/26, extended its upmove to a 3-month high
- It looks like a bullish flag, but the target seems excessive
- It trades above both its 5- & 21-day EMAs & is overbought
- Initial resistance: 7,546
- Further resistance: 7,689
- Immediate support: 7,450
- Further support: 7,335, 7,190 & 7,110
- Fast stochastics: bullish



BRIC Equity Indexes

Model Signals - Daily & Weekly

<i>BRIC Index</i>	<i>Daily Model</i>	since	Daily Bias (> or < 21-day EMA)	Daily Risk	<i>Weekly Model</i>	since	Weekly Bias (> or < 21-week EMA)	Weekly Risk
Brazil	L	26-Apr	slightly bullish	slightly bullish	L	19-Apr	bullish	slightly bullish
Russia	S	30-Apr	sideways	neutral	S	30-Apr	bearish	slightly bearish
India	L	26-Apr	bullish	bullish	L	26-Mar	slightly bullish	slightly bullish
China-Shanghai	S	26-Apr	bearish	slightly bearish	S	16-Mar	slightly bearish	slightly bearish

Source: Proprietary Luca Global Markets, LLC Model

BRIC Equity Index Trade Idea

Comment:

Long India's Sensex while above the 5-day EMA

- Sensex remains strong, as it extended its gains to a 3-month high
- It trades above both its 5- & 21-day EMAs
- Initial resistance: 35,221
- Further resistance: 35,502 & 36,444
- Immediate support: 34,845
- Further support: 34,300, 33,505, 32,918 & 32,484
- Fast stochastics: bullish



Middle East Equity Indexes Model Signals - Daily & Weekly

<i>Middle East Index</i>	<i>Daily Model</i>	since	Daily Bias (> or < 21-day EMA)	Daily Risk	<i>Weekly Model</i>	since	Weekly Bias (> or < 21-week EMA)	Weekly Risk
Saudi Arabia	S	25-Apr	bullish	slightly bearish	S	30-Apr	bullish	slightly bearish
Abu Dhabi	S	29-Apr	slightly bullish	slightly bearish	S	30-Apr	slightly bullish	slightly bearish

Source: Proprietary Luca Global Markets, LLC Model

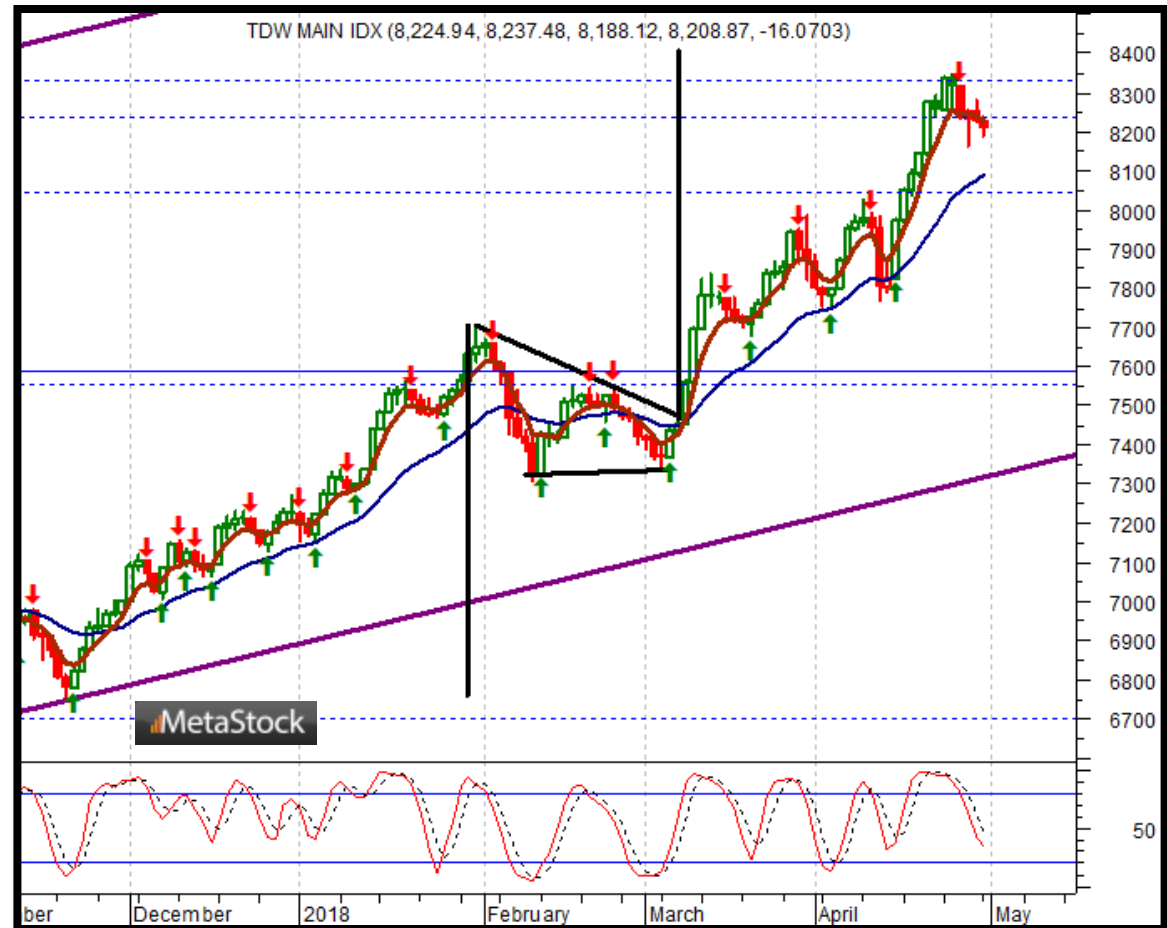
Middle East Equity Index Trade Idea

Comment:

Long Saudi's Tadawul

تداول while above the 21-day
EMA

- Tadawul pulled back from a 2 2/3 -year high
- It failed to fully reach the target of a bullish flag at 8,418
- The 5-day EMA has provided a strong floor
- Initial resistance: 8,345
- Further resistance: 8,562 & 8,810
- Immediate support: 8,165
- Further support: 8,090, 7,995, 7,770 & 7,750
- Fast stochastics: bearish



How to Use the Heat Map

Bias: If the Candle > 21-period EMA = bullish
 If the Candle < 21-period EMA = bearish
 If the Candle around 21-period EMA = sideways

Long or Short

Since when

Risk: Bullish or Bearish
 Candle as of Monday am EST

	Commodities	Daily Model	since	Daily Bias (> or < 21-day EMA)	Daily Risk	Weekly Model	since	Weekly Bias (> or < 21-day EMA)	Weekly Risk
Energy	Crude (CLc1)	S	27-Apr	bullish	slightly bullish	L	23-Mar	slightly bearish	slightly bullish
	Brent (LCOc1)	L	21-Apr	slightly bullish	slightly bullish	L	6-Apr	slightly bearish	slightly bullish
	Natural gas (NGc1)	S	23-Apr	bearish	bearish	S	20-Apr	bearish	slightly bearish
	Palm oil (FCPOc1)	L	24-Apr	sideways	neutral	S	20-Apr	slightly bearish	slightly bearish
Metals	Gold (GCc1)	S	24-Apr	bearish	bearish	S	20-Mar	slightly bearish	slightly bearish
	Silver (SIc1)	S	22-Apr	bearish	bearish	S	24-Apr	bearish	bearish
	Platinum (PLc1)	S	20-Apr	bearish	bearish	S	20-Mar	bearish	slightly bullish
	Copper (HGc1)	L	24-Apr	slightly bearish	slightly bullish	S	24-Apr	slightly bearish	slightly bearish
Softs	Coffee (KCN5)	L	24-Apr	sideways	neutral	L	24-Apr	slightly bullish	slightly bullish
	Cocoa (LCCN5)	L	23-Apr	bullish	bullish	L	13-Apr	bullish	bullish
	Soy meal (SMN5)	S	24-Apr	bearish	slightly bearish	S	24-Apr	bearish	slightly bearish
	Wheat (WN5)	S	24-Apr	bearish	slightly bearish	S	24-Apr	bearish	bearish
	Corn (CN5)	S	20-Apr	bearish	bearish	S	6-Apr	bearish	bearish

Source: Proprietary Luca Global Markets, LLC Model

L = long
 S = short