



The Madagascar Water Project

PHASE V PROJECT REPORT

October 2017

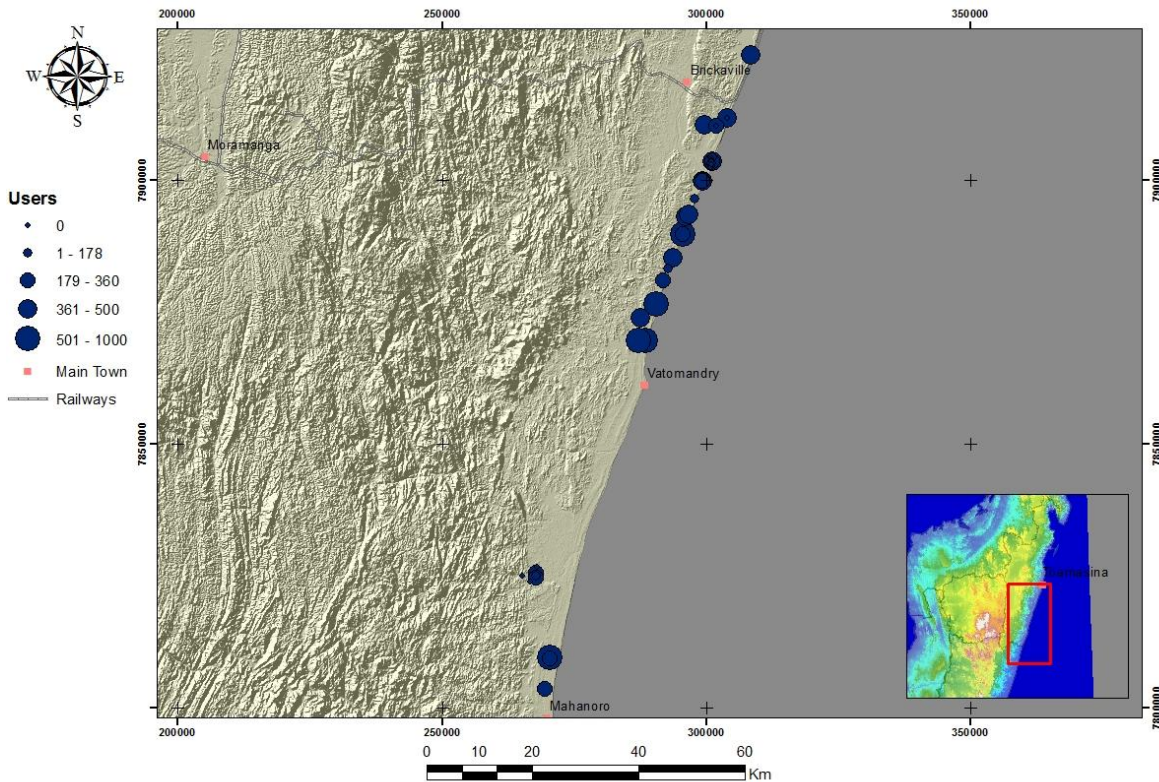
Summary

The Phase V Project was an outstanding success by any measure. The goals were to

1. Expand water development into smaller villages in the Commune of Andovoranto and along the Pangalana Chanel north of Vatomandry and
2. Upgrade existing wells.

To these ends 15 new successful wells were drilled, along with 5 low rate wells, and 10 existing pumps were upgraded and repaired. The new wells increased the capacity of the MWP by 50% and added 10 villages and 3,500 beneficiaries. The Madagascar Water Project now provides clean water to over 11,000 people.

The program was conducted at the end of the dry season to minimize the number of wells that go dry seasonally. Indeed, two of the new wells were replacements for existing wells that went dry seasonally.



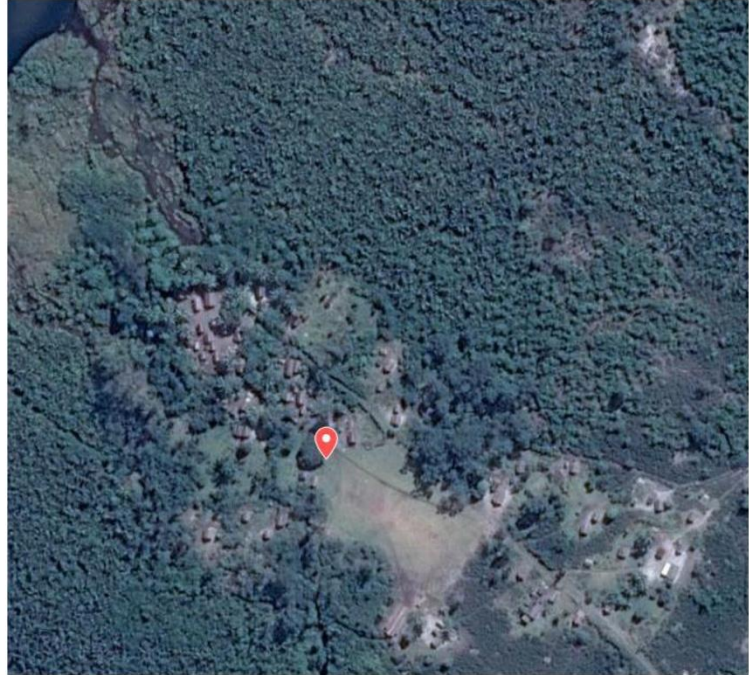
**MADAGASCAR WATER PROJECT
USERS DISTRIBUTION**

MWP28 Village: ANDOVONA

MWP28

Village of Andovona
Number of residents: 400
Number of houses: 45

Fonkontany: Andavakimena
Commune: Andovoranto
District: Brickaville



Replacement for MWP24, which goes dry seasonally
Well Depth: 7.0m BGL; Top of Water Table: 5.0m BGL; Steel Well Point
Initial Rate: 30 liters per minute; 9 meter pump
The Only source of potable water in the village

MWP 29 Village: VAVONY

MWP29

Village of Vavony
Number of residents: 650
Number of houses: 70

Fonkontany: Vavony
Commune: Andovoranto
District: Brickaville



Well Depth: 5.7m BGL; Top of Water Table: 4.5m BGL; PVC Well Point
Initial Rate: 30 liters/minute; 9 meter pump
The pump is the additional of existing 01 bucket well in the village

MWP 30 Village: AMBODIVOARA

MWP30

Village of Ambodivoara
Number of residents: 450
Number of houses: 52

Fonkontany: Ambodivoara
Commune: Andovoranto
District: Brickaville



Well Depth: 7.0m BGL;
Top of Water Table: 5.0m BGL;
PVC Well Point;
Initial Rate: 30 liters/minute; 9 meter pump
The pump is only source of potable water

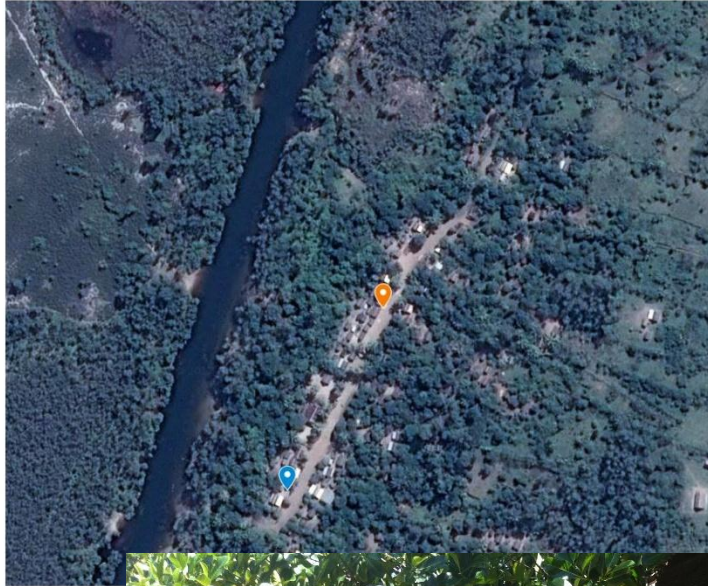


MWP 31 Village: KALOMALALA

MWP31

Village of Kalomalala
Number of residents: 500
Number of houses: 70

Fonkontany: Sondrara
Commune: Andovoranto
District: Brickaville



Replacement for MWP18, which goes dry seasonally
Well Depth: 7.0m BGL; Top of Water Table: 5.0m BGL Initial Rate: 30
liters/minute; Batimax Pump (new)
The pump is the additional of MWP19

MWP 32 Village: AMBOKAMBATSY

MWP32

Village of Amboakambatsy

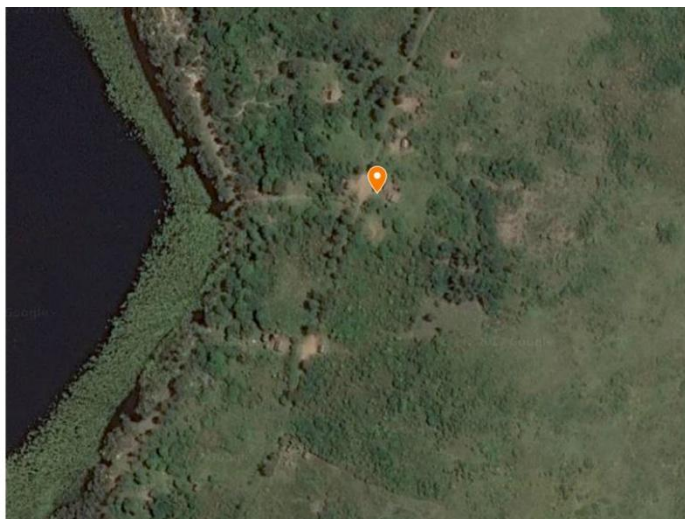
Number of residents: 120

Number of houses: 15

Fonkontany: Sondrara

Commune: Andovoranto

District: Brickaville



Well Depth: 7.0m BGL;
Top of Water Table: 5.6m BGL;
Steel well point;
Initial Rate: 30 liters/minute; 9 meter pump
The Pangalana Channel is the only other source of fresh water



MWP 33 Village: AMBODITAFARA

MWP33

Village of Amboditafara
Number of residents: 450
Number of houses: 55

Fonkontany: Sondrara
Commune: Andovoranto
District: Brickaville



Well Depth: 5.8m BGL;
Top of Water Table: 4.5m BGL
Initial Rate: 30 liters/minute;
Steel well point

Replacement for MWP25, which goes dry seasonally
The pump is only source of potable water



MWP 34: Village ANALALAVA

MWP34

Village of Analalava
Number of residents: 215
Number of houses: 50

Fonkontany: Mahatsara
Commune: Andovoranto
District: Brickaville



Well Depth: 7.3m BGL; Top of Water Table: 5.5m BGL
Initial Rate: 30 liters/minute; steel well point; 9 meter pump

Since One broken bucket well in village, MWP34 is the only source of water

MWP 35: Village: SONDRARA**MWP35**

Village of Sondrara

Number of residents: 950

Number of houses: 200

Fonkontany: Sondrara

Commune: Andovoranto

District: Brickaville



Well Depth: 6.3m BGL; Top of Water Table: 4.9m BGL

Initial Rate: 30 liters/minute; PVC well point; BatiMax Pump (rebuilt)

Since MWP35 produce sea water, MWP23 is the only source of water

MWP 36: Village: MAHATSARA

MWP36

Village of Mahatsara
Number of residents: 178
Number of houses: 52

Fonkontany: Mahatsara
Commune: Andovoranto
District: Brickaville



Well Depth: 7.0m BGL; Top of Water Table: 5.3m BGL
Initial Rate: 30 liters/minute;
steel well point; 9 meter pump
One broken pump built by an NGO in 2012 is present in the village



MWP 37 Village: VOHITRAMPASINA

MWP37

Village of Vohitrampasina
Number of residents: 360
Number of houses: 33

Fonkontany: Mahatsara
Commune: Andovoranto
District: Brickaville



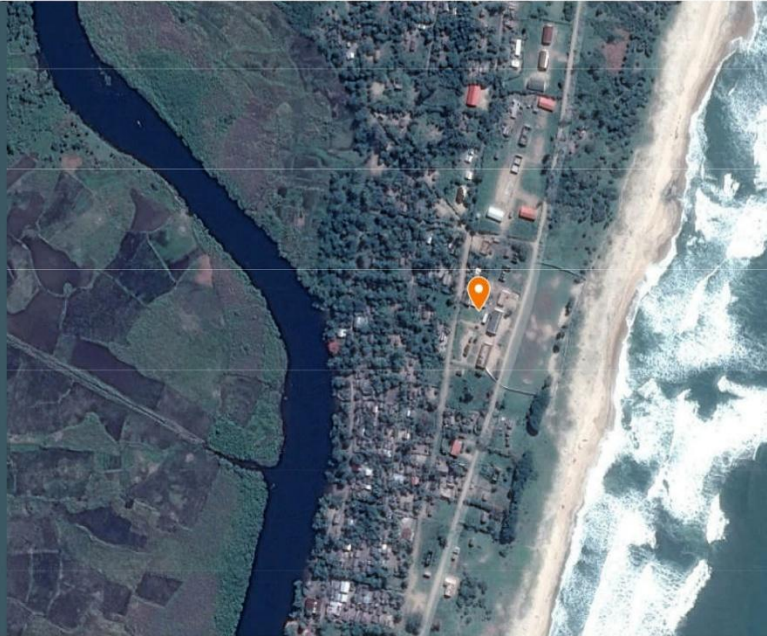
Well Depth: 7.0m BGL; Top of Water Table: 5.8m BGL
Initial Rate: 30 liters/minute; steel well point; Batimax Pump (rebuilt)
One broken pump built by an NGO in 2012 is present in the village

MWP 38: Village: ANDOVORANTO ELEMENTARY SCHOOL

MWP38

Elementary School
Number of users: 400

Fonkontany: Andovoranto
Commune: Andovoranto
District: Brickaville



Well Depth: 5.4m BGL; Top of Water Table: 3.5m BGL
Initial Rate: 30 liters/minute; steel well point; 9 meter pump

MWP 39: Village: MANAKAMBAHINY

MWP39

Village of Manakambahiny

Number of residents: 1000

Number of houses: 140

Fonkontany: Manakambahiny

Commune: Sahamatevina

District: Vatondry



Well Depth: 4.8m BGL; Top of Water Table: 2.5m BGL

Initial Rate: 30 liters/minute; steel well point; BatiMax Pump (rebuilt)

One broken pump built by an NGO in 2012 is present in the village

MWP 40: Village: ANDOVORANTO HOTEL

MWP40

Village of Andovoranto
Hotel Cocotree
Number of houses: Visitor

Fonkontany: Andovoranto
Commune: Andovoranto
District: Brickaville



Well Depth: 5.0m BGL; Top of Water Table: 3.0m BGL
Initial Rate: 30 liters/minute; PVC well point;
20 meter pump, pumps into 1000 liter cube at an elevation of 6 meters, will serve
as a test for future community well designs.

MWP 41: Village: ANTSIRANAMIHANINA

One well from an NGO is flowing at very low rate (2 liters/min)

MWP41

Village of Antsiranamihanina

Number of residents: 700

Number of houses: 84

Fonkontany: Manakambahiny

Commune: Sahamatevina

District: Vatomandry



Well Depth: 5.3m BGL;
Top of Water Table:
4.0m BGL Initial Rate:
40liters/minute;
PVC well point;
20 meter pump



MWP 42: Village: AMBILAN'NY VARANTA

One broken pump built by an NGO in 2012 is present in the village

MWP42

Village of Ambilan'ny Varanta

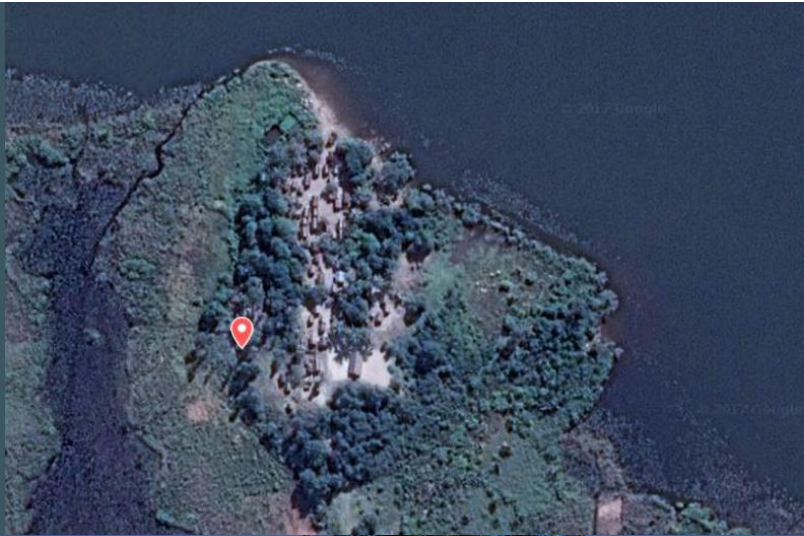
Number of residents: 400

Number of houses: 45

Fonkontany: Manakambahiny

Commune: Sahamatevina

District: Vatondry



Well Depth: 6.5m BGL; Top of Water Table: 40m BGL, aquifer quality an issue;
Initial Rate: 20 liters/minute; 9 meter pump; labored pumping (sign of low perm)
Water cloudy with odor

The well was considered marginal but was left producing because there is no other source of water in the entire village.