



Proudly providing ergonomic products for over 35 years
Free Shipping • Lifetime Warranty • No Minimums

Table of Contents

Table Bases/Base Accessories

- Pg-3 **Quickie-2** Deluxe Height Adjustable Table
- Pg-4 **Quickie-3** Deluxe Height Adjustable Table
- Pg-5 Laminate Table **Tops**
- Pg-6 **Q-Drawer** Quickie Drawer
- Pg-6 **QPB** Quickie Power Bar
- Pg-7 **QPU** Quickie Power USB Module
- Pg-7 **Quick Link 360** Cable Manager

Desktop Sit-Stand Solutions

- Pg-8 **Volante 36"** Desktop Sit-Stand Workstation
- Pg-8 **Volante-HD 42"** Desktop Sit-Stand Workstation
- Pg-9 **Volante-C** Corner Desktop Sit-Stand Workstation
- Pg-9 **Altissimo** Desktop Sit-Stand Workstation

Task Lighting

- Pg-10 DST Deluxe Phosphorescent Task Light Series
- Pg-10 LEDT Deluxe LED Task Light Series
- Pg-11 LEDE Budget LED Task Light Series
- Pg-11 LEDDM Desk Lamp

Monitor Arms

- Pg-12 7915H Single-Screen, Double Extension Dual
- Pg-12 7920H Dual-Screen, Double Extension Dual Height

Monitor Arms (continued)

- Pg-13 7915 Single-Screen, Double Extension Monitor Arm
- Pg-13 7920 Dual-Screen, Double Extension Monitor Arm
- Pg-14 7930 Triple-Screen Parabolic Hub Monitor Arm
- Pg-14 7940 Parabolic Octo-Screen, Beam Mount Monitor Arm

Keyboard Solutions

- Pg-15 Strat-Plat Trackless Keyboard and Arm
- Pg-15 PMNP Slimline Natural Keyboard Support System
- Pg-16 DPP Slimline 27" All-in-One Phenolic Keyboard Support System
- Pg-16 PHP Slimline All-in-One Keyboard Support System

Accessories

- Pg-17 Strat-Mat Anti-Fatigue Mat
- Pg-17 7915i Adjustable iPad Holder Arm
- Pg-18 7915LT Adjustable Laptop Arm
- Pg-18 PD Pencil Drawer Organizer
- Pg-19 DCPUC CPU Cart
- Pg-19 CPUR-S Retractable Strap CPU Holder

Healthcare

- Pg-20 DWM Deluxe Wall-Mount Monitor System

[Table Bases](#)

[Desktop Sit-Stand Solutions](#)

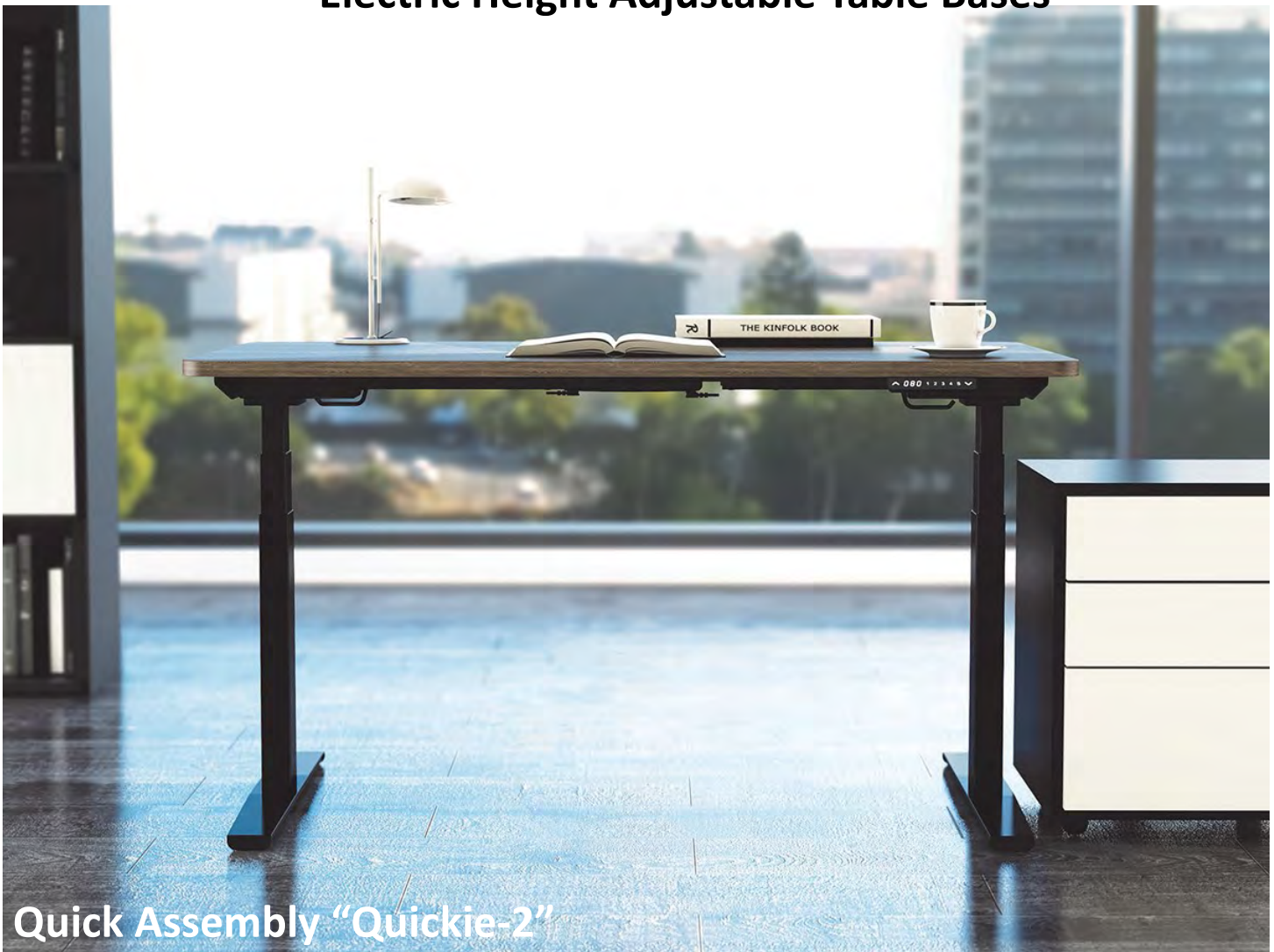
[Task Lighting](#)

[Monitor Arms](#)

[Keyboard Solutions](#)

[Accessories](#)

Electric Height Adjustable Table Bases



Quickie-2

3-stage

List \$1,512

Quickie-2

2-stage

List \$1,350

- 3 Stage Height Adjustment 22.6" - 48.7"
- 2 Stage Height Adjustment 26" - 45¾"
- Dual Motors with Low Noise Level
- Three Memory Position Digital Control
- Anti-Collision Protection
- Super Quick Installation
- Adjusts to Fit Table Tops 42" - 80"
- Supports Up to 225 Pounds
- 24" or 30" Feet
- Black, Silver, or White Color Options
- UL Listed
- Base Only
- No Minimum Quick Ship
- Lifetime Warranty



Quick Assembly "Quickie-3"

Table Bases

- 3 Stage Height Adjustment Range (22.7" to 48.8")
- Three memory/six button programmable switch and controls. One touch or hold and release memory position options
- Low 48 dB noise level
- A standard 'C' leg configuration increases under table space
- Three table motors only use a combined 0.06W of standby power when not in use
- Can be assembled in 90°, 120 ° and in-line
- Leg motors have Anti-Collision protection for greater safety
- The table frame kits can easily be adjusted to fit different table top widths (42" to 91")
- Exceeding most industry standards, supports up to 300 lbs
- 24" deep or 30" deep foot
- Super Quick Installation
- Provides a contemporary modern design feel to any office environment
- Lifetime Warranty
- Bases Only
- UL and BIFMA Certified
- No Minimum Quick Ship
- Lifetime Warranty

Table Tops

Systematix all new worksurfaces feature High Pressure Decorative Laminate (HPL). Our worksurfaces outperform "Low Pressure" melamine tops often used to achieve low cost. Available in seven colors. Quick Ship colors ship in 1-2 weeks including White, Hard Rock Maple & Folkstone Gray. Slate, Millwork Cherry, Formal Mahogany and Walnut Grove normally ship in 6 weeks.



All worksurfaces feature 3 mm color coordinated matching edge band. We use high quality 1.125" thick industrial grade particleboard cores with phenolic backer sheets for true "balanced panel" construction to prevent warp or sag.

- 46" x 23" \$545
- 46" x 29" \$575
- 58" x 23" \$585
- 58" x 29" \$620

Tops ship in 2-3 weeks
Additional sizes available on request

Table Bases

Quickie Series—Accessories

Q-Drawer Quickie Storage Drawer

- Sleek low profile drawer designed for electric height table bases
- Ball bearing slides
- 8" depth
- Removable tray that slides across the drawer that holds accessories or personal items
- Available in 3 colors: Silver, Black or White
- **Q-Drawer List \$192**



QPB Quickie Power Bar



- Available in three sizes 21", 48" and 60"
- 8 total AC Receptacles; 120V, 15A
- Dual Orientation Mounting; includes 4 mounting screws
- 6' or 10' PVC cord; straight, grounded plug
- Built-in Circuit Breaker
- Tamper-Resistant Outlets are available as a option
- Steel and plastic
- UL962A listed; Canada C22.2 308-18; TAA

QPB-21 List \$336

QPB-48 List \$488

QPB-60 List \$548

Table Bases

Quickie Series—Accessories

Quickie Power USB Module

- USB-A Charging Ports (1.5A and 2.A)
- USB-C Charging Port (supports PD protocol; 60W)
- Choose from power cord or hardwire option
- 6' or 10' PVC cord in white or black, straight grounded plug
- Optional 10' woven cord available in 4 colors, with 45° flat, low-profile plug
- 6' flexible steel, 3-wire conduit; 3/8" diameter
- Straight; 90° also available
- Clamp, under-surface, or in-surface
- Powder-coated aluminum
- UL 962A listed; UL 1310 listed power supply; Canada C22.2 308-18; FCC CFR-47 Part 15 Class A; TAA; USB ports compliant to USB-IF BC 1.2

QPUSE List Price \$348



Quick Link 360 Cable Manager



- 50 Q Link 360 elements
- 1 Quad Connector
- 1 Dumbbell Connector
- 1 Foot Assembly
- Used for height-adjustable mechanisms up to 51" height
- Available in 3 color options: Silver, Black and White

Quick Link 360 List \$252

Desktop Sit-Stand Solutions

Volante Standard



- Ships fully assembled
- Compact footprint allowing it to fit onto a 24" deep desk
- Gas assisted height adjustment provides smooth, quiet height adjustment
- Primary work surface can be extended 20" above the desk
- Large useable primary work surface accommodates 2 x 24" monitors, monitor arms, an iMac or laptop computer
- 20° of keyboard surface tilt allows the user to adjust the keyboard surface tilt from -10°/+10°
- Keyboard surface adjusts with the primary work surface for Improved ergonomics
- Primary work surface grommet allows for cable management and attachment of a monitor arm
- Supports up to 35 lbs.. Strong enough to support users requirements
- Weighs 40 lbs. Light enough for simple installation and moving
- Available in Black or White color

Volante List Price \$960

Volante Corner Sit-Stand Station

- Ships fully assembled. No tools required for installation
- Designed to fit 90° corner desk applications
- 42" wide useable primary work surface accommodates 2 x 27" monitors, monitor arms or laptop with monitor
- Single paddle gas assisted height adjustment provides smooth, quiet and infinite height adjustment
- Primary work surface can be extended 20" above the desk
- 20° of keyboard surface tilt allows the user to infinitely adjust the keyboard surface tilt from -10°/+10°
- Clip-on mouse fence and cable manager
- Keyboard surface adjusts with the primary work surface for Improved ergonomics
- Three primary work surface grommet holes
- Supports up to 35 lbs.. Strong enough to support users technology requirements
- Weighs 42 lbs. Light enough for simple installation and moving from desk-to-desk
- Available in Black

Volante-C List Price \$1,320



Desktop Sit-Stand Solutions

Volante Heavy-Duty



- Ships fully assembled. No tools required for installation
- Large 42" wide useable primary work surface accommodates 2 x 27" monitors, monitor arms or laptop with monitor
- Compact footprint allowing it to fit onto a 24" deep desk
- Single paddle gas assisted height adjustment provides smooth, quiet height adjustment
- Primary work surface can be extended 20" above the desk
- 20° of keyboard surface tilt allows the user to infinitely adjust the keyboard surface tilt from -10°/+10°
- Clip-on mouse fence and cable manager
- Keyboard surface adjusts with the primary work surface for Improved ergonomics
- Three primary work surface grommet holes
- Supports up to 45 lbs.. Strong enough to support users requirements
- Weighs 43 lbs. Light enough for moving from desk-to-desk

Volante HD List Price \$1,200

Altissimo



- 22" of gas assisted positioning, the Altissimo moves easily and effortlessly from seated to standing positions
- Cleverly mounts at the rear of the work surface for added desk space
- Comes with 9.5" of counter balanced height adjustment, 45° of tilt, and 90° of portrait to landscape rotation
- The Altissimo accommodates installed technology ranging from 5 to 25 lbs
- Dual monitor version supports most 24" monitors weighing 8 lbs each
- Standard grommet and clamp mounting supplied
- Dual tray system offers a spacious keyboard and mouse platform with adjustable tilt
- Secondary surface for placing items which need to remain close at hand
- Single and dual monitor versions
- Available in Black, Silver or White

Altissimo List Price

\$1,650 (Single Monitor)

\$1,776 (Double Monitor)

Task Lighting

Deluxe Task Light



- T5 Tri-phosphor lamps 3500K
- Normal power electronic ballast
- 9' black cord
- Prismatic acrylic lens
- High gloss UV reflector
- Standard color black
- Custom colors available
- Hardware included
- Daisy chaining option available
- ETL, TAA and BAA certified

Deluxe Task Lighting

- **DST24:** for 30" - 36" Shelf List \$256
- **DST36:** for 42" - 48" Shelf List \$274
- **DST48:** for 54"-60" Shelf List \$464

Deluxe LED Task Lighting

- High quality, long lasting LED luminaires rated at 50,000 hrs
- Single touch on/off switch with 15%-100% continuous dimming with last state memory
- 3500K color "temperature" in the optimum neutral range for office work
- Auto turn off after 10 hours of use
- Clear anodized aluminum housing with white end caps
- 9' cord with 15 watt power supply (LEDT17) and 12' foot cord with 60 watt power supply (LEDT31, LEDT44, and LEDT58)
- Screw and magnetic mounting hardware included
- Other options include daisy chaining and occupancy sensor
- Available in four sizes (17", 31", 44", 58")

Deluxe LED Task Lighting

- **LEDT17:** for 24" -36" Shelf List \$302
- **LEDT31:** for 42" - 48" Shelf List \$454
- **LEDT44:** for 54"-60" Shelf List \$690
- **LEDT58:** for 72"+ Shelf List \$780



Task Lighting

Budget LED Task Light



- High quality LED fixture
- Four lengths to choose from 12", 22", 32" and 42"
- Single touch on/off
- End-End interconnect (push together)
- LED rated lifespan of 50,000 hours
- Color temperature 3500K
- Silver color finish
- 18 watt wall transformer with 9' black cord
- Magnetic and screw mounting both included with 2 cord managers

Budget LED Task Lighting

- LEDE12: for 24" Shelf List \$204
- LEDE22: for 30" - 36" Shelf List \$256
- LEDE32: for 42"-48" Shelf List \$316
- LEDE42: for 54"-60" Shelf List \$420

LED Task Light

Single Arm
Freestanding Base
5-Step Dimming; 100% - 25%
6.6 System Watts
4000K Color Temperature
350 lumens output
50,000 hour LED Lifespan
24 Total LEDs
6' 2" Black Power Cord
USB Charging Port; Type A
Aluminum and plastic materials
ETL listed; compliant to UL 153 & CSA
C22.2 No. 250.

LED Task Light LEDDM List Price \$378



Monitor Arms

7915H Single-Screen, Double Extension Dual Height Monitor Arm

- Patented Quick Connect allows fast, simple assembly
- 24" of back and forth movement
- 24" of height adjustment for sit to stand applications
- The arm swivels 360° around the base, increasing the options for display position
- Desk clamp and grommet mount hardware are included to minimize SKUs
- Clamp and grommet adjustable to fit most desks and work surfaces
- Monitor mounting bracket contains both 75mm and 100mm hole patterns to comply with VESA standards
- 180° tilt, 180° side-to-side, and 360° landscape-to-portrait movement
- A choice of finishes - Silver or Black
- Cable management system

7915H List Price \$558



7920H Dual-Screen, Double Extension Dual Height Monitor Arm



- Patented Quick Connect allows fast, simple assembly
- 24" of back and forth movement
- 24" of height adjustment for sit to stand applications
- The arm swivels 360° around the base, increasing the options for display position
- Desk clamp and grommet mount hardware are included to minimize SKUs
- Clamp and grommet adjustable to fit most desks and work surfaces
- Monitor mounting bracket contains both 75mm and 100mm hole patterns to comply with VESA standards
- 180 ° tilt, 180° side-to-side, and 360° landscape-to-portrait movement
- A choice of finishes - Silver or Black
- Cable management system

7920H List Price \$852

Monitor Arms

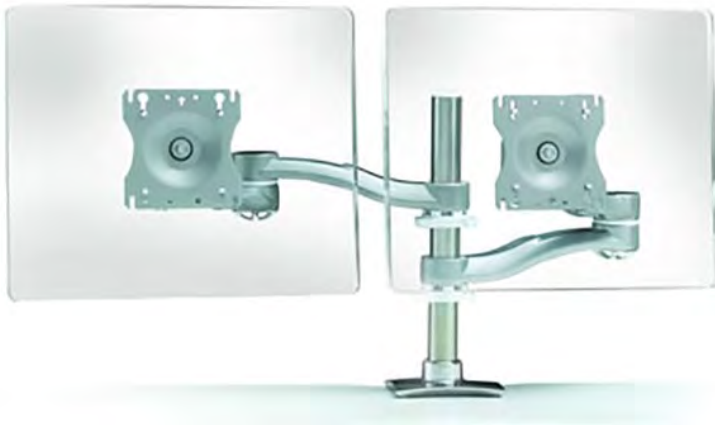
7915 Single-Screen, Double Extension Monitor Arm

- Patented Quick Connect allows fast, simple assembly
- 20" of back and forth movement
- The arm swivels 360° around the base, increasing the options for display position
- Includes Desk clamp and grommet mount hardware .
- Clamp and grommet adjustable to fit most desks and work surfaces
- Monitor mounting bracket contains both 75mm and 100mm hole patterns to comply with VESA standards
- Pole allows manual height adjustment through a 13" range
- 180° tilt, 180° side-to-side, and 360° landscape-to-portrait movement
- A choice of finishes - Silver or Black
- Cable management system

7915 List Price \$470



7920 Dual-Screen, Double Extension Monitor Arm



- Patented Quick Connect allows fast, simple assembly
- 20" of back and forth movement
- The arm swivels 360° around the base, increasing the options for display position
- Desk clamp and grommet mount hardware are included to minimize SKUs
- Clamp and grommet adjustable to fit most desks and work surfaces
- Mounting bracket includes 75mm and 100mm hole patterns to comply with VESA standards
- Pole allows manual height adjustment through a 13" range
- 180° tilt, 180° side-to-side, and 360° landscape-to-portrait movement
- A choice of finishes - Silver or Black
- Cable management system

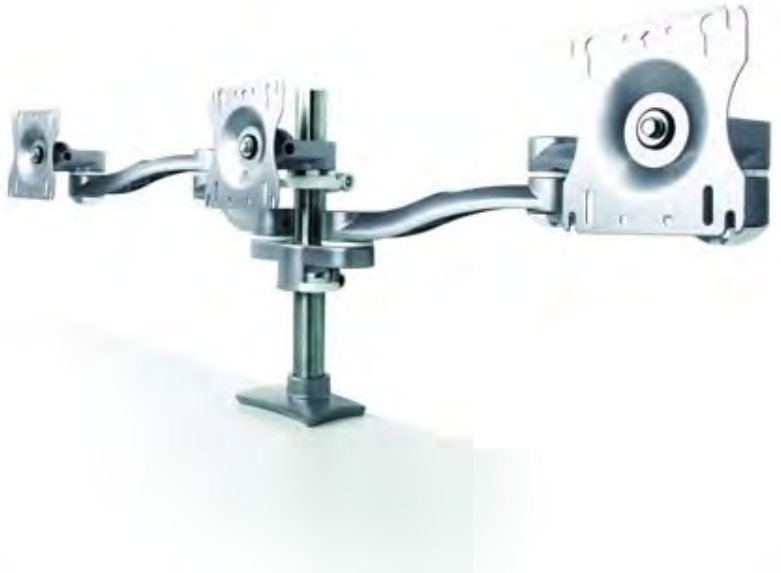
7920 List Price \$718

Monitor Arms

7930 Triple-Screen Parabolic

- Flexibility and more options with a simple, easy-to-use Allen wrench adjustment
- Supports a 20 lbs load capacity (per screen)
- The arm swivels 360° around the base, increasing the options for display position
- Options are available for panel, wall and slat-wall mounting configurations
- Desk clamp and grommet mount hardware are included to minimize SKUs
- Clamp and grommet adjustable to fit most desks and work surfaces
- Monitor mounting bracket, with Quick Connect, contains 75mm and 100mm hole patterns to comply with VESA standards
- Allows for a maximum 18" screen width. Custom configurations available for larger screens

7930 List Price \$842



7940 Parabolic Octo-Screen, Beam Mount Monitor Arm

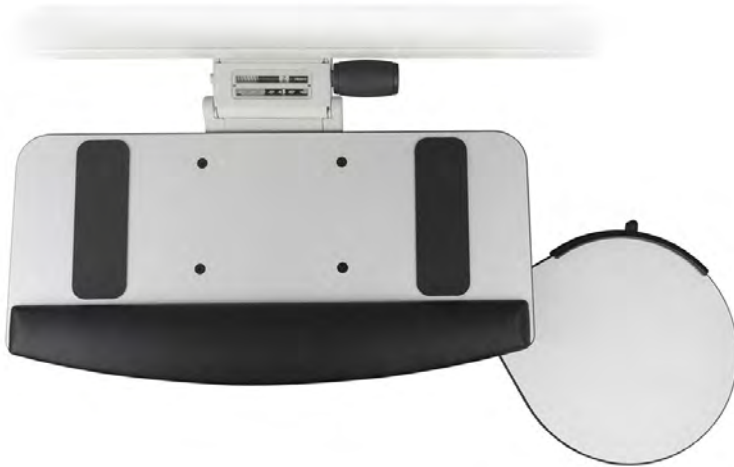
- Patented Quick Connect allows fast, simple assembly
- Width adjustment for various size monitors with individual tilt and pivot capability
- Desk clamp and grommet mount hardware are included to minimize SKUs
- Clamp and grommet adjustable to fit most desks and work surfaces
- Monitor mounting bracket contains both 75mm and 100mm hole patterns to comply with VESA standards
- A choice of finishes - Silver or Black
- Cable management system

7940 List Price \$1,040



Keyboard Solutions

STRAT-PLAT Trackless Keyboard and arm



- 19.4" X 9.4" white phenolic keyboard tray with 9" swivel mousing surface
- Anti-slip pads prevent keyboard movement when typing
- Gel-feel palm rest
- Lever free (Lift-N-Lock) white mechanism with tilt and height indicators
- +10° to -15° tilt angles, 360° of swivel
- Full storage in 9 3/8" undersurface space
- Exceeds HFES & BIFMA 5th percentile seated key-boarding heights (HFES 22" BIFMA 22.6")
- The Strat Plat provides a stylish decorative finish to enhance any modern office

STRAT-PLAT List Price \$650

Microsoft Natural™ Keyboard with Lever Free, Sit-Stand Arm

- 1/4" thin profile phenolic keyboard platform with swivel mouse
- Tray designed to fit Natural keyboards
- Tray dimensions: 19.5" Mouse: 9"
- Ergonomically shaped and stable
- Gel palm rest
- Anti-skid grip pads
- Mouse tray has built in mouse guard to help prevent mouse from falling
- Cable manager
- Available with 17 or 21" track lever free arm

PMNPLF17T List Price \$525

PMNPLF21T List Price \$538



Keyboard Solutions

Slimline All-in-One Keyboard Support System



- 1/4" thin profile phenolic keyboard platform
- Tray dimensions: 27" X 10.75"
- Platform accommodates both keyboard and mouse
- Gel palm rest
- Ergonomically shaped and stable
- Mouse tray has built in mouse guard to help prevent mouse from falling
- Cable manager
- Available with 17" or 21" track Lever Free Arm

DPPLF17T List Price \$525

DPPLFE21T List Price \$538

Slimline Phenolic Keyboard Support System

- 1/4" thin profile phenolic keyboard platform with swivel mouse
- Ergonomically shaped and stable
- Gel palm rest
- Anti-skid grip pads
- Swing-out mouse tray has built in mouse guard to help prevent mouse from falling
- Mouse tray may be mounted left or right
- Cable manager
- Available with 17" or 21" track Lever Free Arm

PHPLF17T List Price \$525

PHPLFE21T List Price \$538



Accessories

STRAT-MAT Anti-Fatigue Mat



- Made of 3/4 thick 100% polyurethane foam
- Helps reduce leg and lower back fatigue
- Integral skin that is stain and puncture resistant
- Foot hold allows for simple mat positioning without having to bend over
- 18 degree beveled edge allows chair casters to easily roll over the mat edge
- Textured top and bottom surface providing anti-slip surface
- Meets RoHS directive (EU) 2015/863
- Dimensions: 18" x 30" x 3/4"
- Three Year warranty
- Satin black finish

STRAT-MAT List Price \$228

iPad Holder

- Adjustable iPad Holder that supports all iPad models
- Holds iPad upright in landscape or portrait views
- 24" of back and forth movement
- Clamp and grommet adjustable to fit most desks and work surfaces
- Stable steel cradle design
- Non-slip cushioned cradle holds the iPad firmly in place
- Cradle uses a cut-out style to accommodate cables
- Mounting hardware included

7915i List Price \$588



Accessories

Adjustable Laptop Arm



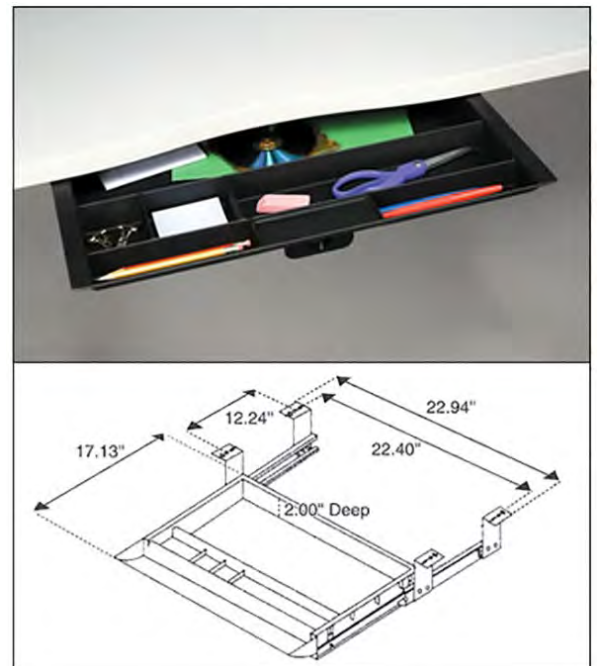
- Adjustable laptop holder for any size laptop
- 24" of back and forth movement
- 24" of height adjustment for sit to stand applications
- The arm swivels 360° around the base, increasing the options for display position
- Desk clamp and grommet mount hardware are included to minimize SKUs
- Clamp and grommet adjustable to fit most desks and work surfaces

7915LT List Price \$588

Pencil Drawer Organizer

- Durable black polymer construction
- Ball bearing slides
- Low profile
- Deep pockets for maximum storage
- Dimensions: 20.5"w X 19.25"d

PD List Price \$144



Accessories

Four-Wheeled CPU Holder



- Easy assembly
- CPU cart comes with 4 casters, 2 with brakes
- Adjustable for 3"-9.75" CPU's

DCPUC List Price \$150

Retractable Strap CPU Holder

- CPU retracts on a 17" track and swivels to allow full accessibility and easy storage
- Accommodates CPU's weighing up to 75 lbs and measuring 64" in perimeter
- Installation is quick and easy as straps adjust and fasten with buckles
- Retracts on a 17" teflon glide track
- Soft touch Anti-slip pads protect the CPU

CPUR-S List Price \$228



Healthcare

Deluxe Wall-Mount System



- 22" of height adjustment range
- 9.5" range of independent monitor " knob free " height adjustment
- Monitor float tower offers 180 degree of rotation
- Keyboard tray rotates independently allowing for seamless information sharing or full screen privacy
- Comes pre-assembled for easy fast installation
- Integrated wire management system for quick and neat wire installation
- Meets BIFMA and HFES requirements

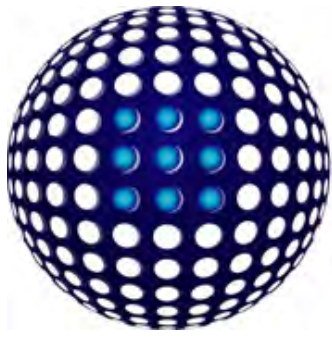
DWM List Price \$2,280

Optional: Rail-Mount CPU Holder

Left: Thin Profile, List Price \$324

Right: Fully Enclosed, List Price \$600





SYSTEMATIX

5953 Commerce Road - Milton, FL 32583

Toll Free (800) 366-7873 Local (850) 983-2213 Fax (850) 983-1775 email info@systematix.org
www.systematix.org