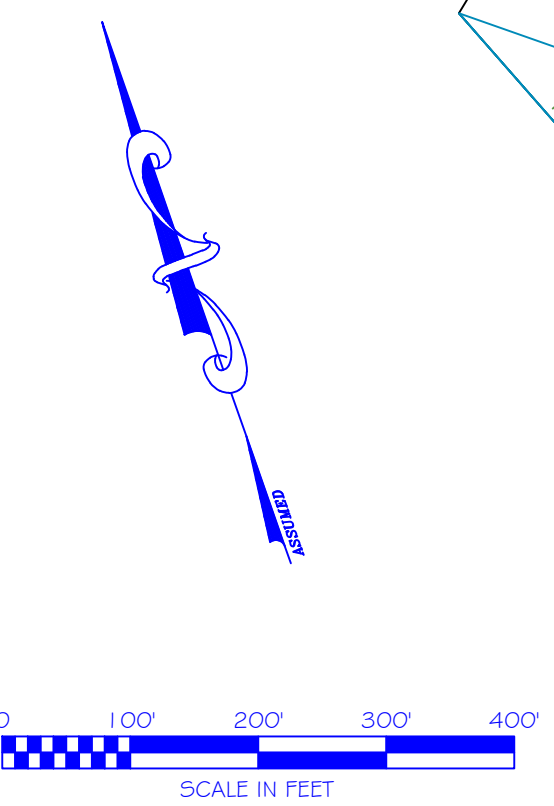
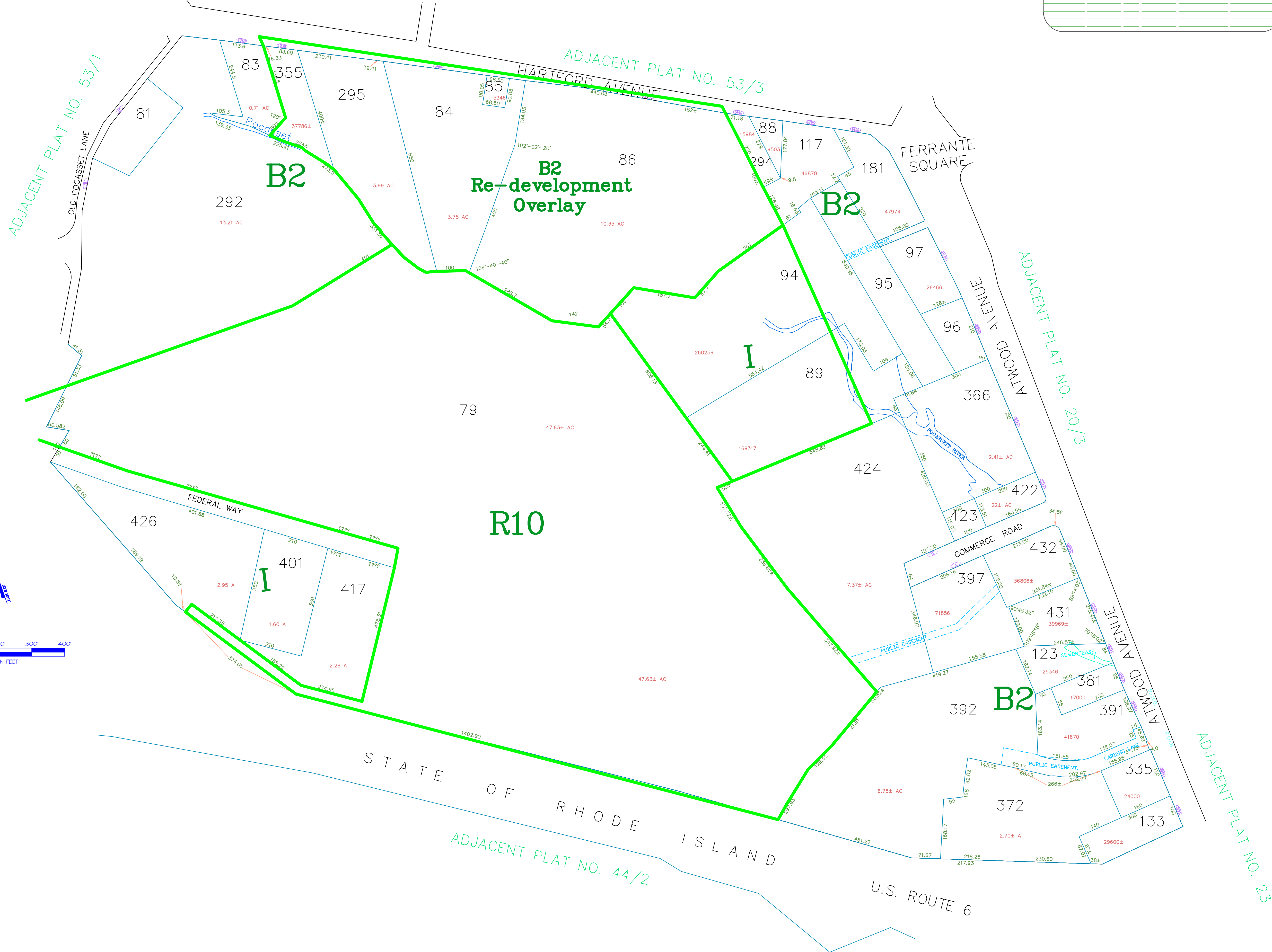


ASSESSOR'S MAP

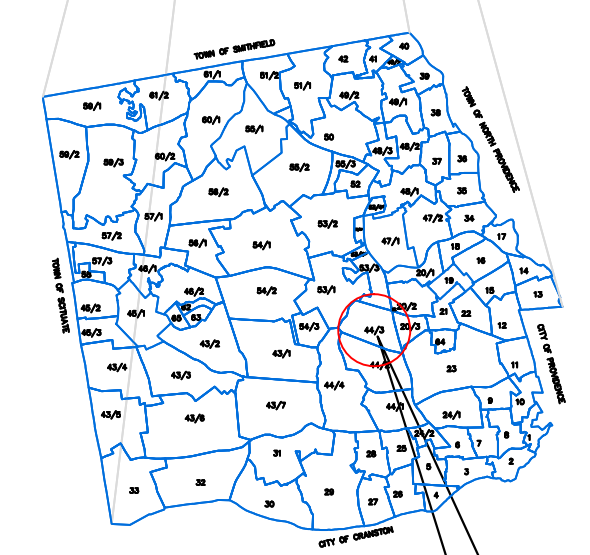
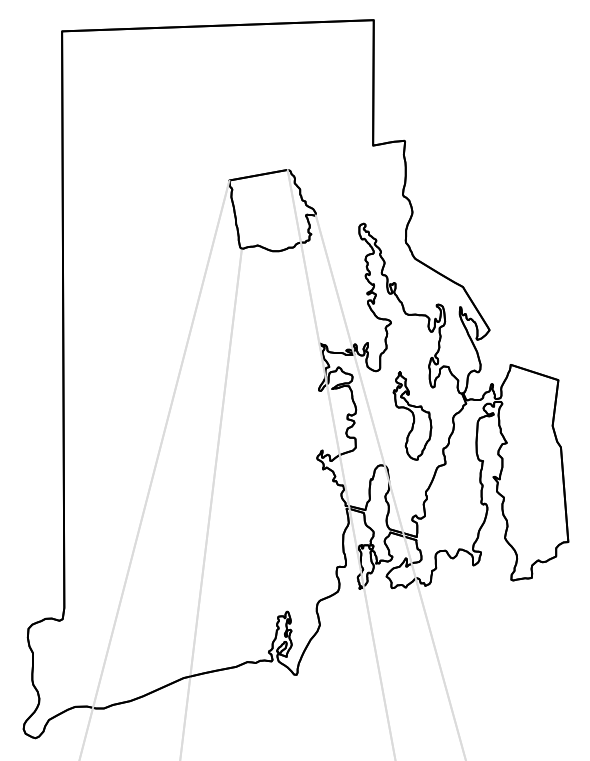
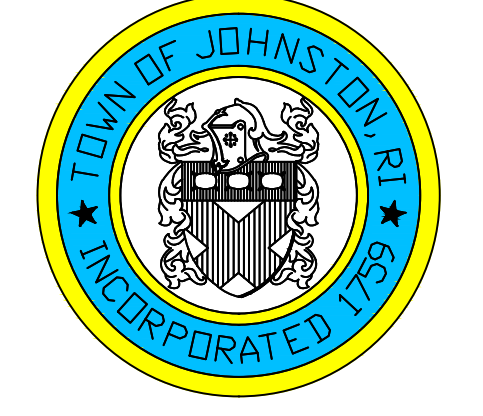
SHOWING ZONING DISTRICTS

AMENDMENTS					
LOT(S)	FROM	TO	ORDIN. #	DATE	NOTE
397,424	I	B2	687	06/22/87	-
84,85,86	B2	RDO	2009-21	12/14/09	-
295,355	B2	RDO	2009-21	12/14/09	-



Assessor's Plat Number
44/3

STATE OF RHODE ISLAND
TOWN OF JOHNSTON
PROVIDENCE COUNTY
INCORPORATED 1759
ASSESSOR'S OFFICE
1385 HARTFORD AVENUE
JOHNSTON, RHODE ISLAND
02919



PLAT INDEX AREA

Scale: 1:150
Revised By: Benjamin Ng
Last updated: January 05, 2015
Date printed: January 04, 2016

For copies of plat maps, please go to the DPW at 100 Irons Avenue Johnston Rhode Island. Thank you.

NOTE: This map was prepared for the use of the Town of Johnston for assessment and illustrative purposes only. It does not represent a survey of the premises. No liability is assumed as to the sufficiency or accuracy of the data delineated hereon.