

**IMPLANTOLOGY**  
*motor system*

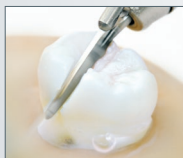
**ORAL SURGERY**  
*motor system*

# NEW OMS

- INTEGRAL COOLING FAN
- HIGH TORQUE
- SPEED STABILITY



TRY OMS WITH 1:2 STRAIGHT HANDPIECE,  
DESIGNED SPECIFICALLY FOR IMPACTED THIRD MOLAR.



The high rotational speed reduces cutting time by **70%** (12 seconds to completely section a tooth), while significantly reducing the force required.

12 sec

80,000 rpm

40 sec

40,000 rpm

# MICROMOTOR MX-i LED PLUS



## HIGH TORQUE

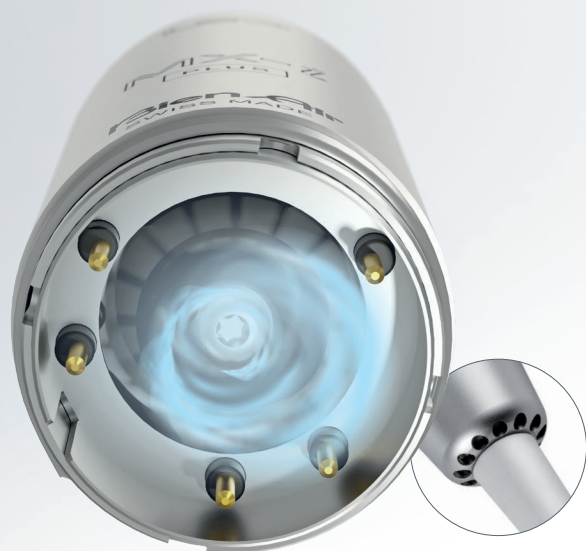
The system allows up to 80 Ncm torque with 20:1 CA.

## SPEED STABILITY

High Torque quantity does not equal stable mechanical power. OMS is the most stable motor in low RPM (implant placement) ever measured, providing the user with confidence unmatched by competition.

## INTEGRAL COOLING FAN

MX-i LED PLUS micromotor supports use of HP 1:2 for high-speed impacted 3<sup>rd</sup> Molar (Wisdom Tooth) extraction.



## ADVANTAGES OF OMS SYSTEM

Recommended procedures:

- Oral Surgery (including impacted third molar extraction) ✓
- Implant placement ✓

Max. Torque in implant mode	80 Ncm
-----------------------------	--------

Torque control	✓
----------------	---

Thermo-washer disinfectable (MX-i LED PLUS and cable)	✓
---	---

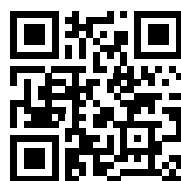
Integral cooling fan (MX-i LED PLUS)	✓
--------------------------------------	---

LED Light (MX-i LED PLUS)	✓
---------------------------	---

Supported handpieces and contrangles:

- Contra-angle: CA 20:1, CA 1:2.5 ✓
- Handpieces: PM 1:1, PM 1:2 ✓

## FOR MORE INFORMATION:



S W I S S  M A D E