

FARM AUCTION

17472 Hwy. T
LaMonte, MO

Due to the passing of my husband, I will sell the following at auction located from Sedalia, west on 50 Hwy
4 miles to T Hwy (Dresden), then 6 ½ miles on T Hwy to sale on:

MONDAY, NOV. 11TH - 10 AM

TRACTORS



John Deere 4840, duals, cab, 6 remotes, fast hitch tac shows 9642 hrs



John Deere 4640 cab, duals, 4 remotes, shows 16619 hrs

TRUCK & GRAIN TRAILER



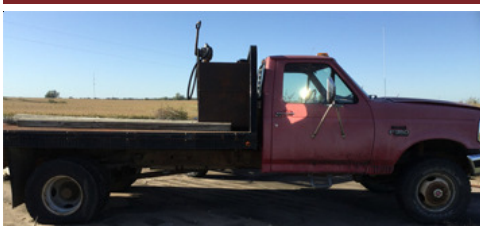
1984 GMC General Class 8 truck, 350 Cummins, 9 spd, spring ride, shows 42k miles
Cornhusker 42' hopper bottom grain trailer

TRUCKS



1973 Chevy Grain truck, 427 5/2 spd, air brakes, tag axle, shows 53k miles, 20' grain box with wood floor
Dodge 600 fertilizer truck, needs repair

PICKUP



1994 Ford F350XL pickup dual wheels, 5 spd 460, very few miles on 2013 overhaul, 11' Steel flatbed with 5th wheel, 12 V hydraulic w/bale spikes

TRAILERS

1997 24' Gooseneck flatbed trailer



1988 WW 16' stock trailer
16' Flatbed bumper trailer
20' Wagon w/ metal screen bed

CROP EQUIPMENT



Kinzie 6 row planter



John Deere 6000 60' sprayer



John Deere 8300 23 hole drill



Krause 4100 24' Field Cultivator
Krause 1900 21' fold-up disk
John Deere RM 16' Cultivator, 3 pt



Case IH 3900 20' disk
John Deere 400 15' rotary hoe
Case 6 bottom semi mount plow
Case 5 bottom semi mount plow
2- Case chisel plows

HAY & GRAIN EQUIP.



John Deere 535 big round baler

New Holland 258 rake
Vermeer WR20 8 wheel rake



John Deere 700 grinder-mixer
Mity Handi 60'x8" auger
John Deere 346 square baler

FARM & GARDEN



New Holland 329 Manure Spreader
14' Grain box on 1966 Chevy chassis
3 pt John Deere 7' brush cutter for scrap
Creep feeder
Several John Deere front end weights
1100 gal Stainless tank w/pump
Grain Bin, metal is crimped
Several gates
Feed troughs
John Deere 216 mower, needs repair
Troy Bilt pony tiller
Poly Stock tank
Pellet stove
Oak Lumber, 2x10, cured

Consigned by Neighbor

2006 Dodge Grand Caravan SE, wiring needs repair

**NOTE: NO
SMALL ITEMS!
BE SURE TO BE
ON TIME!**

Larry
Drenon Auction

Since
1969

Larry
660-596-8515

Lacey
660-723-1104

Laramie
660-221-4386

660-547-2646
www.DrenonAuction.com

JUNE STEPHENS

Terms: Cash, approved check or credit/debit card (Convenience Fee Applied.). Nothing to be removed until settled for. Not responsible for accidents. Statements made day of sale take precedence over printed material. LUNCH SERVED.