

# VANEC

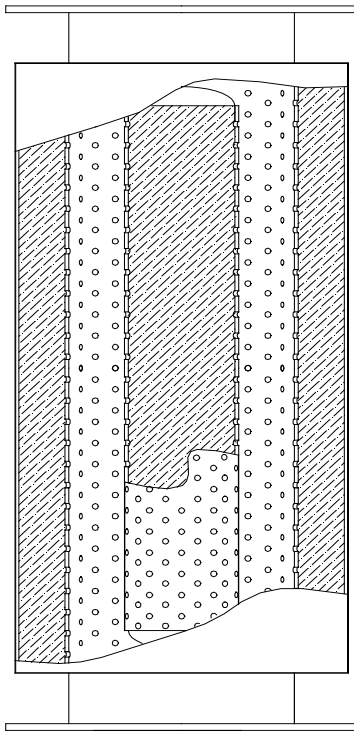
## Model 316 Intake Silencer

### Standard Features:

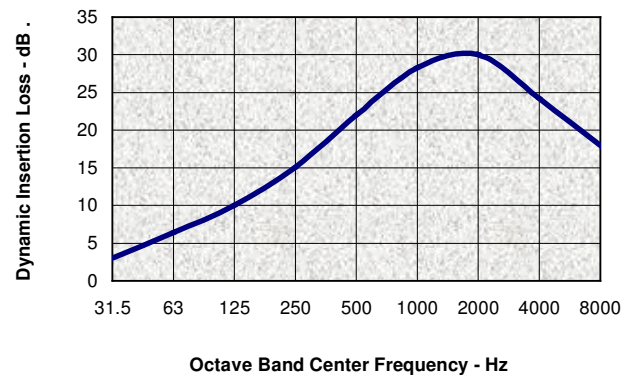
- ✓ All Steel Welded Construction
- ✓ Quality Fabrication Techniques
- ✓ Hair Felt Absorptive Pack
- ✓ Maximum Operating Temperature of 250°F
- ✓ Plate Flanges to Match ASA 125# Flanges
- ✓ Prime Coated Exterior Surfaces

### Optional Features:

- ✓ Materials as Specified
- ✓ Finish as Specified
- ✓ Pack Material as Specified
- ✓ Mounting Brackets
- ✓ Threaded Connections Available
- ✓ Companion Flanges
- ✓ Flange Drilling as Specified



Typical Performance



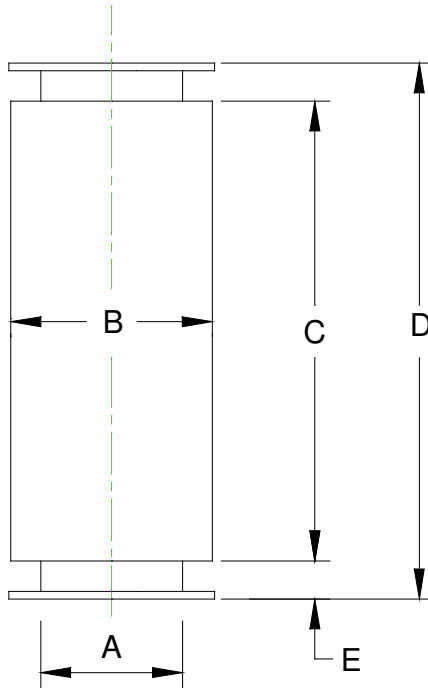
### Application:

The **VANEC** Model 316 Intake Silencer is designed for use in suppressing the intake noise from high speed blowers, fans, engines and centrifugal air handling devices with an atmospheric suction.

The Model 316 Intake Silencer, when properly applied, will reduce intake noise to a community acceptable level for dwellings located further than 1,600 ft. from the intake opening. Silencer performance will depend upon actual operating conditions.

The **VANEC** Model 316 Intake Silencer may be mounted either vertically or horizontally.

Issue: 10/2002



**VANEC Model 316**

Size	Dimensions in Inches					Est.Wt. Lbs.
	A	B	C	D	E	
316-12	12	20	26	32	3	166
316-14	14	22	32	40	4	227
316-16	16	24	32	40	4	279
316-18	18	26	38	46	4	326
316-20	20	28	44	54	5	471
316-22	22	30	44	54	5	508
316-24	24	32	50	60	5	619
316-26	26	34	56	66	5	709
316-28	28	36	56	66	5	828
316-30	30	38	62	72	5	939
316-32	32	40	68	78	5	1,217
316-34	34	42	68	78	5	1,278
316-36	36	44	74	84	5	1,511
316-42	42	50	86	98	6	2,030
316-48	48	56	98	110	6	2,553
316-54	54	62	110	126	8	3,158
316-60	60	68	122	138	8	3,731

**VANEC Industrial Silencers**  
**716-827-4959**

[www.vanec.com](http://www.vanec.com)