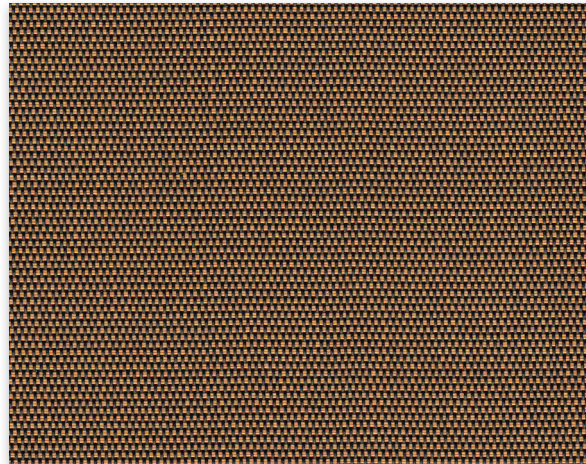


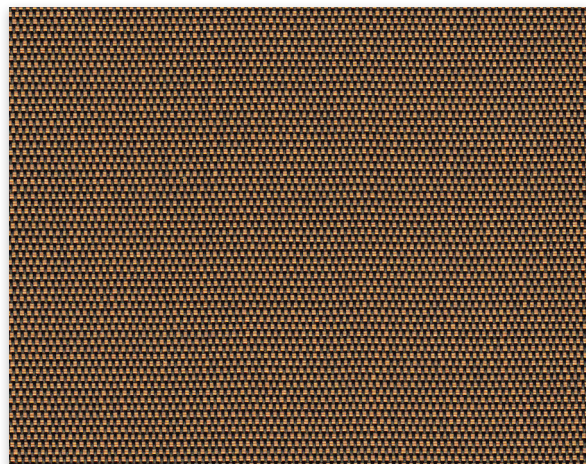
# M Screen™

Conventional | 1% 3% 5% openness



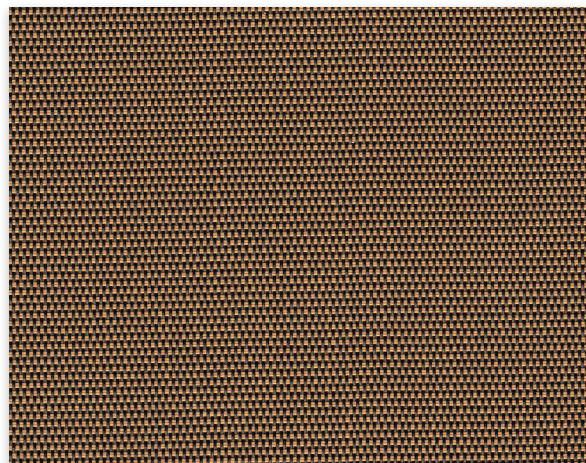
1%

030071 | Charcoal/Apricot



3%

030071 | Charcoal/Apricot

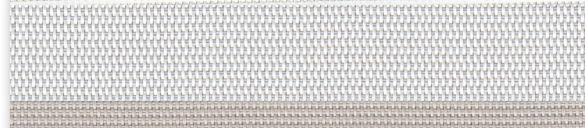


5%

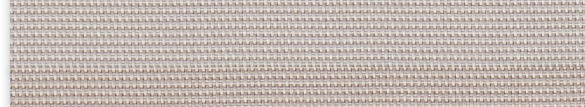
030071 | Charcoal/Apricot



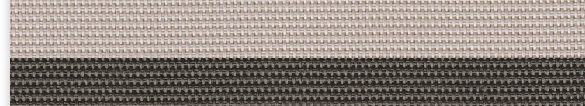
020202  
White/White



020207  
White/Pearl



007020  
Pearl/Linen



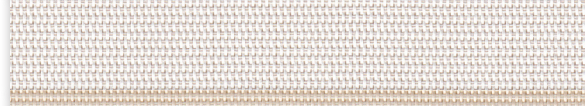
007007  
Pearl/Pearl



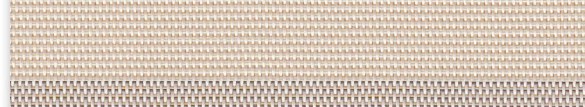
030001  
Charcoal/Grey



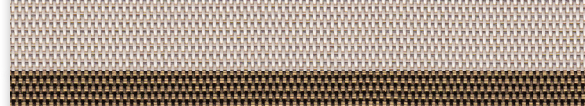
030030  
Charcoal/Charcoal



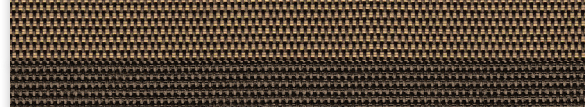
002022  
White/Stone



002020  
White/Linen



020022  
Linen/Stone



00M166  
Linen/Sable-Cocoa



030010  
Charcoal/Sable



030061  
Charcoal/Cocoa

Fabrics sampled on waterfall are 5% openness.



Sun Control Textiles™

# Specifications

Item Number	<b>1%</b> 008501   <b>3%</b> 008503   <b>5%</b> 008505
Product Category	Conventional
Fabric Style	Rib Weave
Openness Factor	1%, 3% & 5%
Composition	36% Fiberglass   64% Vinyl
UV Blockage	Approximately 95% - 99%
Standard Packaging	Rolls of 30 ly (27 lm)
Width	78 in (200 cm), 98 in (250 cm), 122 in (310 cm)
Weight	<b>1%</b> 13.12 oz/yd <sup>2</sup> (445 g/m <sup>2</sup> )±5%   <b>3%</b> 12.27 oz/yd <sup>2</sup> (432 g/m <sup>2</sup> )±5%   <b>5%</b> 11.3 oz/yd <sup>2</sup> (384 g/m <sup>2</sup> )±5%
Thickness	<b>1%</b> .022 in (0.56 mm)±5%   <b>3%</b> .022 in (0.55 mm)±5%   <b>5%</b> .022 in (0.55 mm)±5%

# Classifications

Fire Classifications	NFPA 701-10 TM#1, California U.S. Title 19, CAN/ULC-S109-03 Small & Large Flame Test
Bacterial & Fungal Resistance	ASTM E2180, ASTM G21
Environment	RoHS - Lead Free, GREENGUARD Gold
Acoustical Performance	<b>1%</b> NRC: 0.50, SAA: 0.47   <b>3%</b> NRC: 0.35, SAA: 0.33   <b>5%</b> NRC: 0.10, SAA: 0.12

# Fabrication

**Cutting:** Cold, Ultrasonic or Crush | **Welding:** Radio Frequency, High Frequency, Impulse, Hot Air or Wedge  
*We recommend testing all cutting and welding methods prior to use to confirm they meet your individual fabric specifications.*

## M Screen™

ITEM	COLOR
030071	Charcoal/Apricot
<b>002002</b>	<b>White/White</b>
002007	White/Pearl
<b>007020</b>	<b>Pearl/Linen</b>
007007	Pearl/Pearl
<b>030001</b>	<b>Charcoal/Grey</b>
030030	Charcoal/Charcoal
<b>002022</b>	<b>White/Stone</b>
002020	White/Linen
<b>020022</b>	<b>Linen/Stone</b>
00M166	Linen/Sable-Cocoa
<b>030010</b>	<b>Charcoal/Sable</b>
030061	Charcoal/Cocoa

F A B R I C															F A B R I C + G L A S S														
thermal Total Solar									optical						commercial SHGC % Improvement						residential SHGC								
Rs   %			As   %			Ts   %			Rv   %		Tv   %				Interior			Exterior			Interior			Exterior					
1	3	5	1	3	5	1	3	5	1	3	5	1	3	5	1	3	5	1	3	5	1	3	5	1	3	5	1	3	5
11	13	13	86	82	80	3	5	7	11	14	13	2	5	7	18	18	16	82	84	84	0.55	0.59	0.60	0.11	0.11	0.11			
<b>76</b>	<b>71</b>	<b>71</b>	<b>9</b>	<b>11</b>	<b>10</b>	<b>15</b>	<b>18</b>	<b>19</b>	<b>81</b>	<b>76</b>	<b>75</b>	<b>12</b>	<b>16</b>	<b>16</b>	<b>63</b>	<b>55</b>	<b>55</b>	<b>82</b>	<b>76</b>	<b>76</b>	<b>0.24</b>	<b>0.29</b>	<b>0.30</b>	<b>0.13</b>	<b>0.16</b>	<b>0.16</b>			
59	54	52	32	36	33	9	10	15	64	58	56	7	8	12	50	45	42	84	84	79	0.32	0.37	0.40	0.10	0.11	0.14			
<b>36</b>	<b>40</b>	<b>39</b>	<b>56</b>	<b>49</b>	<b>49</b>	<b>8</b>	<b>11</b>	<b>12</b>	<b>38</b>	<b>42</b>	<b>41</b>	<b>5</b>	<b>8</b>	<b>9</b>	<b>34</b>	<b>34</b>	<b>32</b>	<b>82</b>	<b>84</b>	<b>82</b>	<b>0.44</b>	<b>0.46</b>	<b>0.47</b>	<b>0.12</b>	<b>0.12</b>	<b>0.13</b>			
32	34	33	63	59	57	5	7	10	34	36	35	4	5	7	26	29	29	84	87	84	0.45	0.48	0.50	0.11	0.10	0.12			
<b>7</b>	<b>8</b>	<b>8</b>	<b>91</b>	<b>90</b>	<b>86</b>	<b>2</b>	<b>2</b>	<b>6</b>	<b>7</b>	<b>8</b>	<b>8</b>	<b>2</b>	<b>2</b>	<b>5</b>	<b>18</b>	<b>16</b>	<b>13</b>	<b>82</b>	<b>87</b>	<b>84</b>	<b>0.56</b>	<b>0.61</b>	<b>0.63</b>	<b>0.12</b>	<b>0.09</b>	<b>0.11</b>			
4	4	4	95	93	93	1	3	3	4	4	4	1	3	3	16	13	11	82	84	87	0.57	0.63	0.64	0.11	0.10	0.09			
<b>67</b>	<b>62</b>	<b>61</b>	<b>15</b>	<b>17</b>	<b>18</b>	<b>18</b>	<b>21</b>	<b>21</b>	<b>71</b>	<b>66</b>	<b>65</b>	<b>16</b>	<b>18</b>	<b>18</b>	<b>55</b>	<b>47</b>	<b>47</b>	<b>76</b>	<b>74</b>	<b>74</b>	<b>0.30</b>	<b>0.35</b>	<b>0.36</b>	<b>0.16</b>	<b>0.18</b>	<b>0.18</b>			
67	64	61	18	21	20	15	15	19	72	67	64	12	11	15	55	50	47	79	82	79	0.29	0.33	0.36	0.14	0.13	0.16			
<b>50</b>	<b>51</b>	<b>50</b>	<b>29</b>	<b>28</b>	<b>28</b>	<b>21</b>	<b>21</b>	<b>22</b>	<b>53</b>	<b>53</b>	<b>52</b>	<b>18</b>	<b>16</b>	<b>18</b>	<b>42</b>	<b>39</b>	<b>37</b>	<b>71</b>	<b>76</b>	<b>74</b>	<b>0.39</b>	<b>0.41</b>	<b>0.42</b>	<b>0.19</b>	<b>0.18</b>	<b>0.19</b>			
39	35	36	50	56	52	11	9	12	41	37	37	9	7	10	37	29	29	79	84	82	0.43	0.48	0.49	0.14	0.11	0.13			
<b>10</b>	<b>12</b>	<b>13</b>	<b>87</b>	<b>84</b>	<b>81</b>	<b>3</b>	<b>4</b>	<b>6</b>	<b>10</b>	<b>13</b>	<b>13</b>	<b>2</b>	<b>4</b>	<b>5</b>	<b>18</b>	<b>18</b>	<b>16</b>	<b>82</b>	<b>84</b>	<b>84</b>	<b>0.55</b>	<b>0.59</b>	<b>0.60</b>	<b>0.12</b>	<b>0.10</b>	<b>0.11</b>			
5	5	5	93	92	90	2	3	5	5	5	5	2	3	4	16	13	13	82	84	84	0.57	0.62	0.64	0.12	0.10	0.10			

# Warranty

5 Year Exterior & 10 Year Interior

# Care & Handling

Remove dust with a vacuum cleaner or compressed air. Do not scrub. Do not use solvents or any abrasive substance which might damage the coating of the fabric. Clean with a sponge or soft brush dipped in soapy water using a mild detergent. Rinse with clean water. Leave the blind down until completely dry. You can also very gently rub the fabric with a clean white pencil eraser to remove small stains.

The fabric performance tests were conducted in accordance with ASTM E891 & ASTM E903-96: Solar Transmittance (Ts), Solar Reflectance (Rs), Solar Absorptance (As), Visible Reflectance (Rv), and Visible Transmission (Tv). Glass performance tests for Solar Heat Gain Coefficient (SHGC) were conducted using the Lawrence Berkeley National Laboratory Window 7.3 NFRC certified software. SHGC % improvement for commercial applications is based on a standard commercial glass makeup of Double Glazing 6 mm | 1/2" air | 6 mm with low E on surface #2. SHGC for residential applications is based on a default residential glass makeup of 3mm clear glass | 1/2" air | 3mm clear glass. Results for SHGC were obtained using the center of glass. Acoustical performance was tested in accordance with ASTM C423-09a: NRC is Noise Reduction Coefficient, SAA is Sound Absorption Average. For up-to-date test results, performance specifications and larger samples, contact the Mermet Technical Department at [www.mermetusa.com](http://www.mermetusa.com).

Mermet Corporation  
 5970 N. Main Street ■ Cowpens, SC 29330  
 Ph 1.866.902.9647 ■ [info@mermetusa.com](mailto:info@mermetusa.com)

[mermetusa.com](http://mermetusa.com)