



# Potomac River Watershed Forum

## National Park Service

## Engagement Along the

## Tidal Potomac River

## Northern Neck Virginia



# Overview

**The National Park Service is interested in engaging with partners to support:**

- Shared interests throughout the Chesapeake Bay Watershed
- Natural, Historic and Cultural Resources and Public Access to the Potomac River
- Strong connections to organizations in the Northern Neck

# Our Purpose Today

**Share ideas on and Examples of current:**

Actions and partnerships to make the three national trails along the tidal Potomac River more visible and visitor-ready in the next few years.

**Learn about other opportunities from you:**

Understand where your organizational priorities align with NPS goals.

# Agenda

## 1. Introduction

- a. NPS Initiatives related to the Chesapeake Bay
- b. NPS Initiatives related to the Potomac River
- c. NPS Initiatives related to the Northern Neck

## 2. Discussion

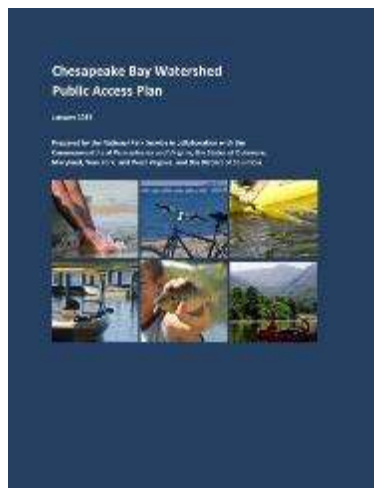
- a. Who can be voice/advocate of Northern Neck for NPS partnership projects?
- b. What projects are coming up soon that could be leveraged for NPS funding?
- c. How can NPS do more?
- d. What else should we know about?

## 3. Wrap-up



# Initiatives Related to Chesapeake Bay

1. Chesapeake Bay Watershed Agreement
2. Executive Order 13508
3. Find Your Chesapeake  
[www.findyourchesapeake.com](http://www.findyourchesapeake.com)
4. Captain John Smith Chesapeake National Historic Trail



# Chesapeake Bay Watershed Agreement

**Chesapeake Bay Program**  
Science. Restoration. Partnership.

Home | Discover THE CHESAPEAKE | Learn THE ISSUES | Track THE PROGRESS | Take ACTION | In The NEWS | Bay Resource LIBRARY | About The BAY PROGRAM

Track the Progress

Home | Track the Progress | What Guides Us | Chesapeake Bay Watershed Agreement

## Chesapeake Bay Watershed Agreement

Since the Chesapeake Bay Program's foundation in 1983, its partners have used written agreements to guide the restoration of the nation's largest estuary and its watershed. Setting goals and tracking progress holds partners accountable for their work, while developing new agreements over time ensures our goals are aligned with the best available science to attain restoration success.

In 2009, it became clear that we needed a new agreement that would accelerate the pace of restoration and align federal directives with state and local goals to create a healthy Bay. Bay Program partners gathered input from citizens, stakeholders, academic institutions, local governments and more to draft an inclusive, goal-oriented document that would address current and emerging environmental concerns.

On June 16, 2014, the *Chesapeake Bay Watershed Agreement* was signed. Signatories include representatives from the entire watershed, committing for the first time the Bay's headwater states to full partnership in the Bay Program. This plan for collaboration across the Bay's political boundaries establishes goals and outcomes for the restoration of the Bay, its tributaries and the lands that surround them.

In a letter, partners promised to openly and publicly engage watershed citizens in implementing these goals and outcomes. Partners have also identified the management strategies they plan to participate in.

- Chesapeake Bay Watershed Agreement (pdf)

### Vision

Chesapeake Bay Program partners envision an environmentally and economically sustainable Chesapeake Bay watershed with clean water, abundant life, conserved lands and access to the water, a vibrant cultural heritage, and a diversity of engaged citizens and stakeholders.

Chesapeake Bay Program partners envision an environmentally and economically sustainable Chesapeake Bay watershed with clean water, abundant life, conserved lands and access to the water, a vibrant cultural heritage, and a diversity of engaged citizens and stakeholders.



# Executive Order 13508



[Home](#)   [About the Executive Order](#)   [Recent News](#)   [Download the latest Reports & Documents](#)   [Visit our Media Center](#)

[About The Executive Order Partners](#)  
[Reports & Documents](#)

[About](#)  [Executive Order Partners](#)

[Search](#)

[Learn About the Chesapeake](#)

[Chesapeake Bay Program](#)  
[ChesapeakeStat](#)  
[Chesapeake Bay Journal](#)

## About the Executive Order

On May 12, 2009, President Barack Obama signed an Executive Order that recognizes the Chesapeake Bay as a national treasure and calls on the federal government to lead a renewed effort to restore and protect the nation's largest estuary and its watershed.

The Chesapeake Bay Protection and Restoration Executive Order established a Federal Leadership Committee that will oversee the development and coordination of reporting, data management and other activities by agencies involved in Bay restoration. The committee will be chaired by the Administrator of the Environmental Protection Agency and include senior representatives from the departments of Agriculture, Commerce, Defense, Homeland Security, Interior, Transportation and others.

The Executive Order requires that these agencies prepare and submit by September 9, 2009 draft reports that make recommendations to:

- ▶ Define the next generation of tools and actions to restore water quality in the Bay and describe the changes to be made to regulations, programs and policies to implement these actions. (U.S. Environmental Protection Agency)
- ▶ Target resources to better protect the Bay and its rivers, particularly in agricultural conservation practices. (U.S. Dept. of Agriculture)
- ▶ Strengthen storm water management practices for federal facilities and federal land within the Bay watershed and develop a best practices guide for reducing polluted runoff. (EPA, Dept of Defense)
- ▶ Assess the impacts of climate change on the Bay and develop a strategy for adapting programs and infrastructure to these impacts. (Dept. of Interior, Dept. of Commerce)
- ▶ Expand public access to the Bay and its rivers from federal lands and conserve landscapes of the watershed. (Dept. of Interior)

The [executive order](#) calls on the federal government to renew the effort to protect and restore the watershed, establishing the Federal Leadership Committee for the Chesapeake Bay and bringing the Chesapeake Bay Program to a new level of interagency coordination and cooperation.

<http://executiveorder.chesapeakebay.net/page/About-the-Executive-Order.aspx>



Search



[My Adventure Planner](#) >

[Home](#)

[The Chesapeake](#)

[American Indians](#)

[Captain John Smith](#)

[Visit the Trail](#)

[Things to Do](#)

[About the Trail](#)

Join  
THE ADVENTURE.

[▶ VISIT THE TRAIL](#)

The Past and the Present  
**CHESAPEAKE BAY**

The Past and the Present  
**AMERICAN INDIANS**

Learn About the Voyages of  
**CAPTAIN JOHN SMITH**

### Featured Spotlight



#### CHESAPEAKE INDIAN TRIBES

Did you know that the trail highlights the complex American Indian cultures that were present in the Chesapeake when Captain Smith arrived? Learn more about Chesapeake Indian tribes here.

[Learn more >](#)



#### PADDLE A WATER TRAIL

Launch your canoe or kayak from one of more than 60 sites along the John Smith Trail. There's no better way to experience the Chesapeake than by boat, and no matter where you live you'll find a water trail nearby.

[Find a Trail >](#)

### Find A Place

To find a place, use the dropdown below:

(choose a place...) ▾

### Upcoming Events

#### 1/15/2011 Saturday Monitoring Bird Walk

Join Jim Peters, Wetlands Ornithologist, for a Saturday morning bird walk.

[More Details](#)





Search



[My Adventure Planner](#) ▶

[Home](#)

[The Chesapeake](#)

[American Indians](#)

[Captain John Smith](#)

[Visit the Trail](#)

[Things to Do](#)

[About the Trail](#)

# Visit the Trail

[Present Map](#)

[Historical Map](#)



# Find Your Chesapeake



PLACES TO GO

THINGS TO DO

TRIP IDEAS

EVENTS

PLAN



## THINGS TO DO

Select a fun and exciting activity or theme to explore places around the Chesapeake!



[findyourchesapeake.com/things-to-do/on-the-land/](http://findyourchesapeake.com/things-to-do/on-the-land/)

[www.findyourchesapeake.com](http://www.findyourchesapeake.com)





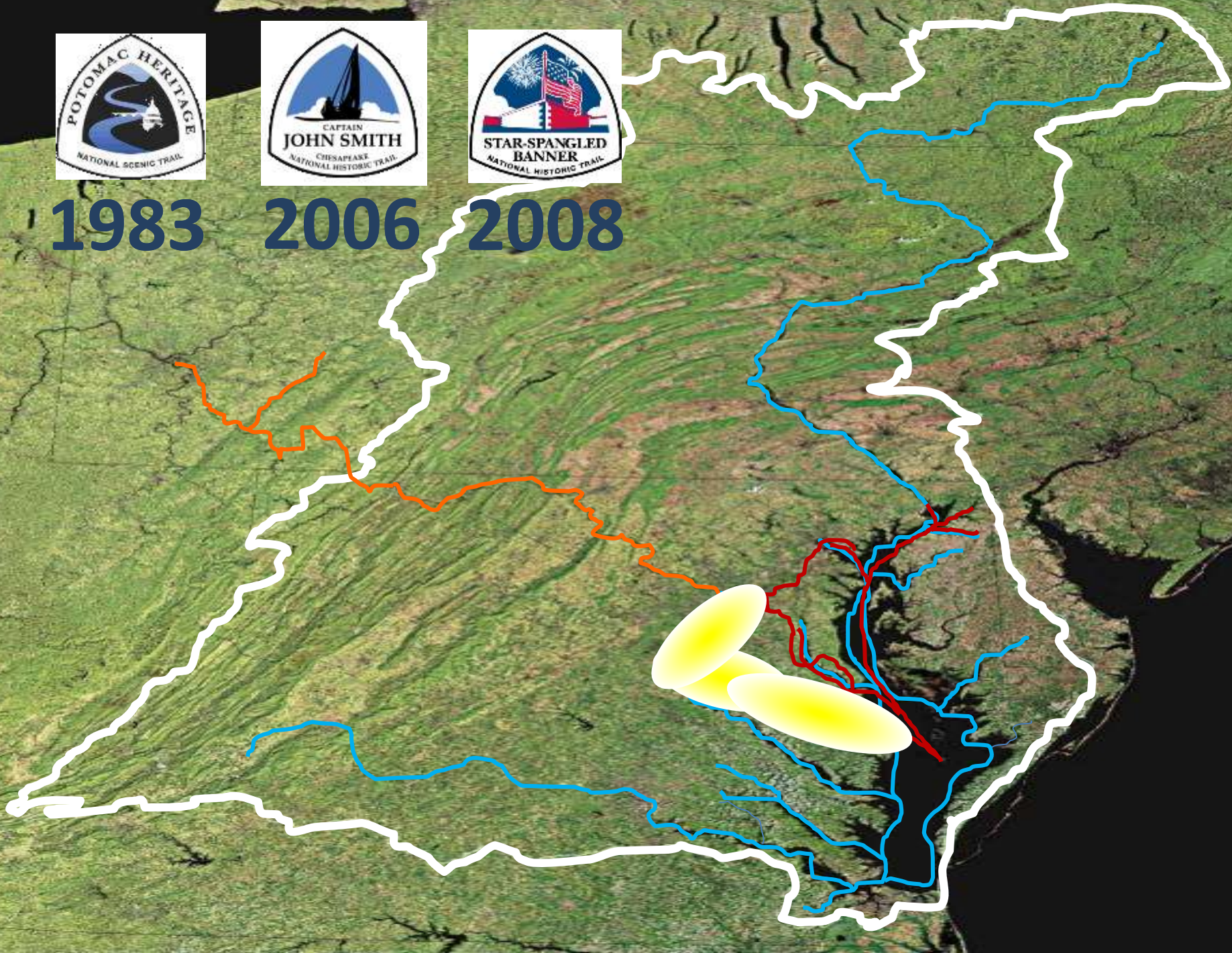
**1983**



**2006**



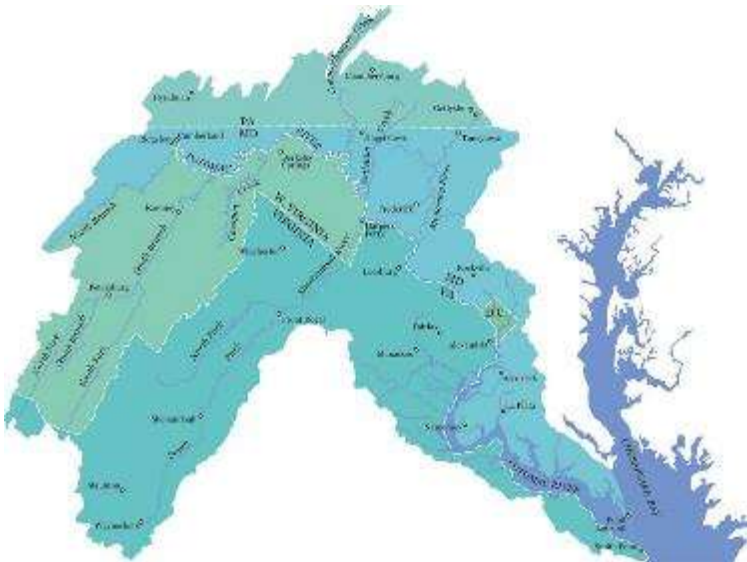
**2008**





# Initiatives Specific to the Potomac River

1. **Three National Trails (CAJO, STSP, POHE) connect to many NPS and partner sites**
2. **Potomac Segment Plan**
3. **Potomac Paddle-in Campsite Network**
4. **Potomac Paddling Itineraries**



# The Trails



## *The Voyages* OF CAPTAIN JOHN SMITH



### Potomac Heritage



*Explore Virginia's Northern Neck by Bicycle*















### Sustaining a Vulnerable Settlement

**Chickasawby Water Trail**

Chickasawby Water Trail is a 10-mile stretch of the Mississippi River that flows through the heart of the Chickasaw Nation. This trail is a vital part of the Nation's history and culture, and it is a key element of the Nation's economic and social development.

The trail is a vital part of the Nation's history and culture, and it is a key element of the Nation's economic and social development. The trail is a vital part of the Nation's history and culture, and it is a key element of the Nation's economic and social development.



### Sustaining Political Independence

Chickasawby Water Trail is a 10-mile stretch of the Mississippi River that flows through the heart of the Chickasaw Nation. This trail is a vital part of the Nation's history and culture, and it is a key element of the Nation's economic and social development.

The trail is a vital part of the Nation's history and culture, and it is a key element of the Nation's economic and social development. The trail is a vital part of the Nation's history and culture, and it is a key element of the Nation's economic and social development.



### Sustaining Aquatic Life

Chickasawby Water Trail is a 10-mile stretch of the Mississippi River that flows through the heart of the Chickasaw Nation. This trail is a vital part of the Nation's history and culture, and it is a key element of the Nation's economic and social development.

The trail is a vital part of the Nation's history and culture, and it is a key element of the Nation's economic and social development. The trail is a vital part of the Nation's history and culture, and it is a key element of the Nation's economic and social development.







## SEAFORD CANOE LAUNCH RULES AND REGULATIONS

1. Operating hours: Dawn to Dusk
2. Canoes and kayaks only
3. No fishing or swimming
4. All vehicles must park in designated area

**PLEASE KEEP AREA CLEAN!**  
CITY OF SEAFORD PARKS & REC. DEPT.  
629-6809



Chesapeake Bay Office

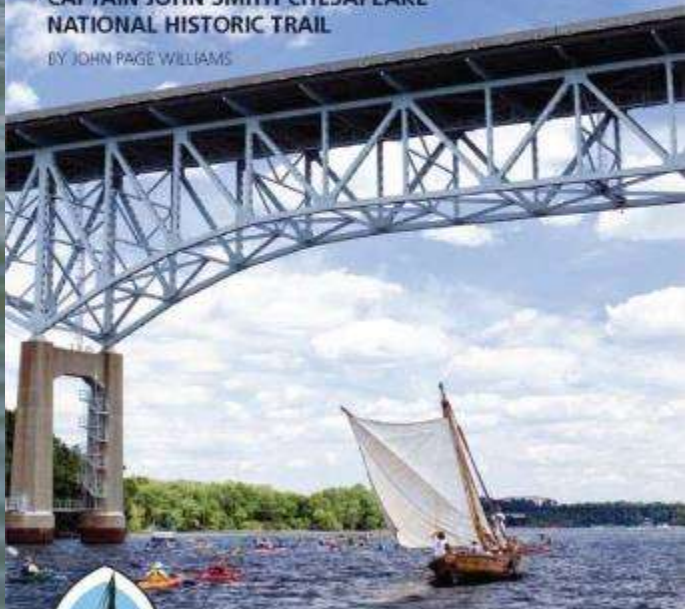
National Park Service  
U.S. Department of the Interior



# A BOATER'S GUIDE

TO THE  
CAPTAIN JOHN SMITH CHESAPEAKE  
NATIONAL HISTORIC TRAIL

BY JOHN PAGE WILLIAMS



IN PARTNERSHIP WITH THE  
CHESAPEAKE CONSERVANCY  
AND THE  
CHESAPEAKE BAY FOUNDATION





Captain John Smith  
Chesapeake National Historic Trail

National Park Service  
U.S. Department of the Interior



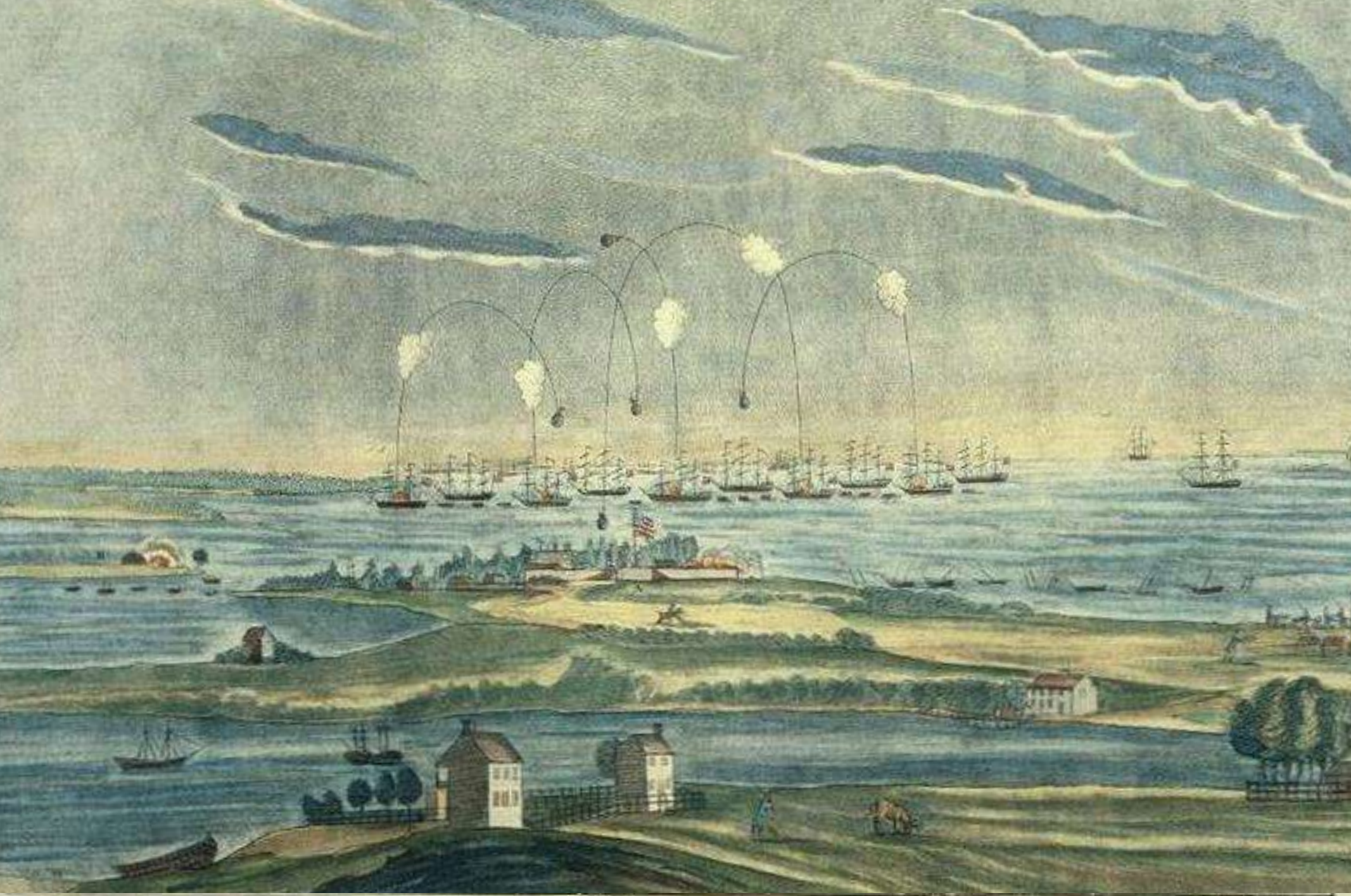
# Captain John Smith GEOTRAIL PASSPORT











**A VIEW of the BOMBARDMENT of Fort M'Henry, near Baltimore, by the British fleet taken from the Chesapeake since the Command of Admirals Cochrane, & Cockburn on the morning of the 13th of Sep. 1814 which lasted 24 hours, & thrown from 1500 to 1600 shells in the Night attempted to land by forcing a passage up the ferry branch but were repulsed with great loss.**

- (D'Armes)
- A. M'Henry
- B. Cochrane
- C. Cockburn
- D. M'Henry
- E. Perry and 1st





The Central Bureau of Census, Inc.

### A Pivotal Battle

The Battle of... was a crucial turning point in the American Civil War. It took place on September 17, 1862, in the state of Maryland. The Union Army, led by General George McClellan, defeated the Confederate Army, led by General Robert E. Lee. This victory allowed the Union to advance into the South, but it also led to the Emancipation Proclamation, which declared that all slaves in the Confederate states were free.

The battle was a tactical draw, but it had significant strategic implications. It showed that the Union Army was capable of standing up to the Confederate Army in a conventional battle. It also demonstrated that the Confederate Army was not invincible, as many people believed at the time.

The battle is commemorated by this marker, which is located in the park. The marker is made of metal and is mounted on a wooden post. It features a map of the battle site and an illustration of the battle scene. The marker is surrounded by a low wall and is set on a paved path.

America's...  
World War II Program



...  
...  
...

America's...  
World War II Program



...  
...  
...



# Storming the Bridge

*"The [Americans] were drawn up in three lines upon the brow of a hill... This river... flowed between the heights occupied by the American forces, and the little town of Bladensburg. Across it was thrown a narrow bridge..."*

—British Lt. George Robert Gleig, eyewitness

A wooden bridge just upriver became the focal point on August 24, 1814, when American and British forces clashed in the Battle of Bladensburg. The British approached from the east, clarifying their intent—to invade Washington. The Americans formed three defensive lines: the first here to protect the bridge, the second along present-day 40th Avenue, and the third at Fort Lincoln Cemetery at the District line. At 1:00 p.m. the British stormed the bridge.



## Heat of Battle

More than 10,000 men battled here, sweltering in heavy uniforms. The British veteran force of 4,500, commanded by Maj. Gen. Robert Ross, had marched for four days carrying loaded packs in near 100-degree heat.

Brig. Gen. William H. Winder commanded about 6,000 Americans, including 1,000 regulars, 400 Chesapeake Flotilla crewmen, 114 marines, and inexperienced militia.



Battle of Bladensburg  
Illustration by [unreadable]









# WAR OF 1812


Classroom Resources

The war that inspired  
"The Star-Spangled Banner"

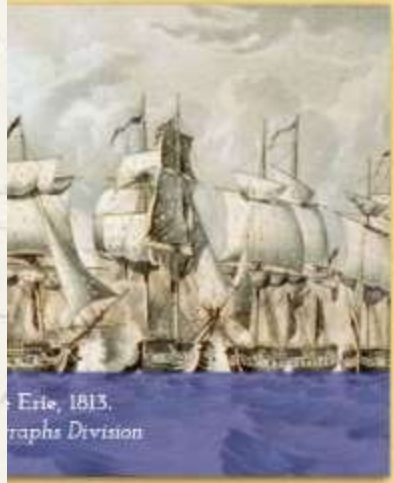

[Home](#) [Overview](#) [Resources](#) [Interactives](#) [Field Trips](#)

Search

THE DEFENSE OF A NATION:  
Maryland's Role in the War of 1812



TEACHER'S RESOURCE GUIDE



### ★ Featured Resources ★

- **War of 1812 Map**  
Explore this interactive map to learn the history of the war. [learn more >>](#)
- **The War in Pictures**  
Investigate events in the war through this art-analysis slideshow. [learn more >>](#)
- **War on the Chesapeake**  
This MPT program tells Maryland's story in the War of 1812. [learn more >>](#)

ly website is best viewed in the most recent version of your browser.

ation of Maryland Public Television/Thinkport in collaboration with the  
Henry and the National Park Service. The content of this website was  
the Chesapeake Bay Gateways Network, the National Park Service and  
Stage Areas Authority, and developed with the support of the Living  
Museums Foundation and the Friends of Fort Mchenry.





Summer 2012

# BAY JOURNEYS

DISCOVER THE CHESAPEAKE

## Chesapeake's 'starring' role in 1812

- ✦ Pocomoke paddle takes you back in time
- ✦ Follow in John Smith's wake on James
- ✦ Make yourself at home on a PA farm

PULLOUT: STAR-SPANGLED BANNER NATIONAL HISTORIC TRAIL











## Aquatic Location

Managed by Virginia State Parks, Recreation & Community Facilities  
Stafford County, Virginia  
www.ParkSystemVa.com



You are viewing an Virginia's freshwater system, near the confluence of Aquia Creek and Aquia River. Government Island sits higher than the surrounding wetlands, between 25 to 40 feet above sea level. Although commonly referred to as an island, the site is actually a peninsula, adjacent by wetlands periodically under water due to rising levels in the adjacent tidal creeks and marshes.

This isolated, productive estuary is home to many freshwater wetland plants, including arrow arum, pickerel weed, spatterdock, and narrow-leaved cattail. Trees found upon the island include several species of oaks, hickories, tulip poplar and beech, as well as river birch, black willow and American sycamore. Birds commonly spotted on the island or nearby are the great blue heron, osprey, bald eagle and cormorant.



# Northern Neck Heritage Trail Bicycling Route Network



## Connecting People and Places

The Northern Neck Heritage Trail Bicycling Route Network is a regional effort of the Potomac Heritage National Scenic Trail, a designated network of trails between the historic, partly flooding Potomac River and Chesapeake Bay, the Chesapeake Bay and the Allegheny Highlands in western Pennsylvania. The "bridled" Trail network offers opportunities for biking, boating, paddling, horseback riding and cross-country skiing. Other segments of this network include the Potomac Trail and various Potomac Heritage Trail sections in Northern Virginia, the Transpen and Old Coastal Toppling Bicycling routes in Southern Maryland, and the Great Allegheny Passage.

## Places of Interest

**Beachville-Colonial Beach Route**  
 Beachville and Beachville-Belemess House. Walk the 1.5-mile trail of grass and sand. [www.beachville.com](http://www.beachville.com)  
 Colonial Beach. The Chesapeake Bay National Historical Site. [www.nps.gov/chesapeakebay](http://www.nps.gov/chesapeakebay)

**Chesapeake Bay**  
 A small study near the shoreline of being fishing, boating, and birding opportunities. Or clear up the beach. [www.chesapeakebay.net](http://www.chesapeakebay.net)

**Historic Jamestown**  
 Historic Jamestown. [www.jamestown.com](http://www.jamestown.com)

**Stafford Hall**  
 Stafford Hall. [www.staffordhall.com](http://www.staffordhall.com)

**Washington State Park**  
 Washington State Park. [www.washingtonstatepark.com](http://www.washingtonstatepark.com)

**George Washington Birthplace National Monument**  
 George Washington Birthplace National Monument. [www.gwbnp.com](http://www.gwbnp.com)

**Historic Mattaponi**  
 Historic Mattaponi. [www.mattaponi.com](http://www.mattaponi.com)

**Colonial Beach**  
 Colonial Beach. [www.colonialbeach.com](http://www.colonialbeach.com)

## Loop Tours

**Beachville-Belemess**  
 Beachville-Belemess. [www.beachville.com](http://www.beachville.com)

**Historic Jamestown**  
 Historic Jamestown. [www.jamestown.com](http://www.jamestown.com)

**Stafford Hall**  
 Stafford Hall. [www.staffordhall.com](http://www.staffordhall.com)

**Washington State Park**  
 Washington State Park. [www.washingtonstatepark.com](http://www.washingtonstatepark.com)

**George Washington Birthplace National Monument**  
 George Washington Birthplace National Monument. [www.gwbnp.com](http://www.gwbnp.com)

## Planning Your Visit

The routes are designed to be thorough and detailed, with a focus on scenic views and historic sites. They are designed to be flexible and can be adjusted to suit your needs.

**Seasonal Considerations**  
 The routes are designed to be flexible and can be adjusted to suit your needs.

**Type of Bicycle**  
 All of the routes are paved and suitable for a wide range of bicycle types.

**Traffic**  
 Most of the routes are in rural areas with low traffic volumes.

**Turns**  
 The routes are designed to be flexible and can be adjusted to suit your needs.

**Camping**  
 There are several campsites along the routes.

**Lodging**  
 There are several hotels and inns in the area.

**For More Information**  
 Visit the website for more information.



- Primary Road
- Secondary Road
- Secondary Road (upgraded)
- Public-Managed Secondary Road
- Private Heritage Access Road (Trail Route to road)
- Trail Route to Road
- Heritage Trail Bicycling Route

- 1 Beachville-Belemess
- 2 Historic Jamestown
- 3 Stafford Hall
- 4 Washington State Park
- 5 George Washington Birthplace National Monument
- 6 Historic Mattaponi
- 7 Colonial Beach
- 8 Potomac Heritage Trail

## Mileage for the Northern Neck Heritage Trail Through Route

The route depicted on this map uses public roads only. All distances shown are approximate. Road conditions and weather can affect travel time. This map is not a substitute for a professional surveyor's map.

Northwest to Southeast	Southeast to Northwest
71.1 Chesapeake Bay	11.1 Stafford Hall
97.1 Historic Jamestown	14.1 Stafford Hall
121.1 George Washington Birthplace National Monument	38.1 Stafford Hall
161.1 Washington State Park	71.1 Stafford Hall
181.1 Stafford Hall	111.1 Stafford Hall
211.1 Stafford Hall	141.1 Stafford Hall
241.1 Stafford Hall	171.1 Stafford Hall
271.1 Stafford Hall	201.1 Stafford Hall
301.1 Stafford Hall	231.1 Stafford Hall
331.1 Stafford Hall	261.1 Stafford Hall
361.1 Stafford Hall	291.1 Stafford Hall
391.1 Stafford Hall	321.1 Stafford Hall
421.1 Stafford Hall	351.1 Stafford Hall
451.1 Stafford Hall	381.1 Stafford Hall
481.1 Stafford Hall	411.1 Stafford Hall
511.1 Stafford Hall	441.1 Stafford Hall
541.1 Stafford Hall	471.1 Stafford Hall
571.1 Stafford Hall	501.1 Stafford Hall
601.1 Stafford Hall	531.1 Stafford Hall
631.1 Stafford Hall	561.1 Stafford Hall
661.1 Stafford Hall	591.1 Stafford Hall
691.1 Stafford Hall	621.1 Stafford Hall
721.1 Stafford Hall	651.1 Stafford Hall
751.1 Stafford Hall	681.1 Stafford Hall
781.1 Stafford Hall	711.1 Stafford Hall
811.1 Stafford Hall	741.1 Stafford Hall
841.1 Stafford Hall	771.1 Stafford Hall
871.1 Stafford Hall	801.1 Stafford Hall
901.1 Stafford Hall	831.1 Stafford Hall
931.1 Stafford Hall	861.1 Stafford Hall
961.1 Stafford Hall	891.1 Stafford Hall
991.1 Stafford Hall	921.1 Stafford Hall
1021.1 Stafford Hall	951.1 Stafford Hall
1051.1 Stafford Hall	981.1 Stafford Hall
1081.1 Stafford Hall	1011.1 Stafford Hall
1111.1 Stafford Hall	1041.1 Stafford Hall
1141.1 Stafford Hall	1071.1 Stafford Hall
1171.1 Stafford Hall	1101.1 Stafford Hall
1201.1 Stafford Hall	1131.1 Stafford Hall
1231.1 Stafford Hall	1161.1 Stafford Hall
1261.1 Stafford Hall	1191.1 Stafford Hall
1291.1 Stafford Hall	1221.1 Stafford Hall
1321.1 Stafford Hall	1251.1 Stafford Hall
1351.1 Stafford Hall	1281.1 Stafford Hall
1381.1 Stafford Hall	1311.1 Stafford Hall
1411.1 Stafford Hall	1341.1 Stafford Hall
1441.1 Stafford Hall	1371.1 Stafford Hall
1471.1 Stafford Hall	1401.1 Stafford Hall
1501.1 Stafford Hall	1431.1 Stafford Hall
1531.1 Stafford Hall	1461.1 Stafford Hall
1561.1 Stafford Hall	1491.1 Stafford Hall
1591.1 Stafford Hall	1521.1 Stafford Hall
1621.1 Stafford Hall	1551.1 Stafford Hall
1651.1 Stafford Hall	1581.1 Stafford Hall
1681.1 Stafford Hall	1611.1 Stafford Hall
1711.1 Stafford Hall	1641.1 Stafford Hall
1741.1 Stafford Hall	1671.1 Stafford Hall
1771.1 Stafford Hall	1701.1 Stafford Hall
1801.1 Stafford Hall	1731.1 Stafford Hall
1831.1 Stafford Hall	1761.1 Stafford Hall
1861.1 Stafford Hall	1791.1 Stafford Hall
1891.1 Stafford Hall	1821.1 Stafford Hall
1921.1 Stafford Hall	1851.1 Stafford Hall
1951.1 Stafford Hall	1881.1 Stafford Hall
1981.1 Stafford Hall	1911.1 Stafford Hall
2011.1 Stafford Hall	1941.1 Stafford Hall
2041.1 Stafford Hall	1971.1 Stafford Hall
2071.1 Stafford Hall	2001.1 Stafford Hall
2101.1 Stafford Hall	2031.1 Stafford Hall
2131.1 Stafford Hall	2061.1 Stafford Hall
2161.1 Stafford Hall	2091.1 Stafford Hall
2191.1 Stafford Hall	2121.1 Stafford Hall
2221.1 Stafford Hall	2151.1 Stafford Hall
2251.1 Stafford Hall	2181.1 Stafford Hall
2281.1 Stafford Hall	2211.1 Stafford Hall
2311.1 Stafford Hall	2241.1 Stafford Hall
2341.1 Stafford Hall	2271.1 Stafford Hall
2371.1 Stafford Hall	2301.1 Stafford Hall
2401.1 Stafford Hall	2331.1 Stafford Hall
2431.1 Stafford Hall	2361.1 Stafford Hall
2461.1 Stafford Hall	2391.1 Stafford Hall
2491.1 Stafford Hall	2421.1 Stafford Hall
2521.1 Stafford Hall	2451.1 Stafford Hall
2551.1 Stafford Hall	2481.1 Stafford Hall
2581.1 Stafford Hall	2511.1 Stafford Hall
2611.1 Stafford Hall	2541.1 Stafford Hall
2641.1 Stafford Hall	2571.1 Stafford Hall
2671.1 Stafford Hall	2601.1 Stafford Hall
2701.1 Stafford Hall	2631.1 Stafford Hall
2731.1 Stafford Hall	2661.1 Stafford Hall
2761.1 Stafford Hall	2691.1 Stafford Hall
2791.1 Stafford Hall	2721.1 Stafford Hall
2821.1 Stafford Hall	2751.1 Stafford Hall
2851.1 Stafford Hall	2781.1 Stafford Hall
2881.1 Stafford Hall	2811.1 Stafford Hall
2911.1 Stafford Hall	2841.1 Stafford Hall
2941.1 Stafford Hall	2871.1 Stafford Hall
2971.1 Stafford Hall	2901.1 Stafford Hall
3001.1 Stafford Hall	2931.1 Stafford Hall
3031.1 Stafford Hall	2961.1 Stafford Hall
3061.1 Stafford Hall	2991.1 Stafford Hall
3091.1 Stafford Hall	3021.1 Stafford Hall
3121.1 Stafford Hall	3051.1 Stafford Hall
3151.1 Stafford Hall	3081.1 Stafford Hall
3181.1 Stafford Hall	3111.1 Stafford Hall
3211.1 Stafford Hall	3141.1 Stafford Hall
3241.1 Stafford Hall	3171.1 Stafford Hall
3271.1 Stafford Hall	3201.1 Stafford Hall
3301.1 Stafford Hall	3231.1 Stafford Hall
3331.1 Stafford Hall	3261.1 Stafford Hall
3361.1 Stafford Hall	3291.1 Stafford Hall
3391.1 Stafford Hall	3321.1 Stafford Hall
3421.1 Stafford Hall	3351.1 Stafford Hall
3451.1 Stafford Hall	3381.1 Stafford Hall
3481.1 Stafford Hall	3411.1 Stafford Hall
3511.1 Stafford Hall	3441.1 Stafford Hall
3541.1 Stafford Hall	3471.1 Stafford Hall
3571.1 Stafford Hall	3501.1 Stafford Hall
3601.1 Stafford Hall	3531.1 Stafford Hall
3631.1 Stafford Hall	3561.1 Stafford Hall
3661.1 Stafford Hall	3591.1 Stafford Hall
3691.1 Stafford Hall	3621.1 Stafford Hall
3721.1 Stafford Hall	3651.1 Stafford Hall
3751.1 Stafford Hall	3681.1 Stafford Hall
3781.1 Stafford Hall	3711.1 Stafford Hall
3811.1 Stafford Hall	3741.1 Stafford Hall
3841.1 Stafford Hall	3771.1 Stafford Hall
3871.1 Stafford Hall	3801.1 Stafford Hall
3901.1 Stafford Hall	3831.1 Stafford Hall
3931.1 Stafford Hall	3861.1 Stafford Hall
3961.1 Stafford Hall	3891.1 Stafford Hall
3991.1 Stafford Hall	3921.1 Stafford Hall
4021.1 Stafford Hall	3951.1 Stafford Hall
4051.1 Stafford Hall	3981.1 Stafford Hall
4081.1 Stafford Hall	4011.1 Stafford Hall
4111.1 Stafford Hall	4041.1 Stafford Hall
4141.1 Stafford Hall	4071.1 Stafford Hall
4171.1 Stafford Hall	4101.1 Stafford Hall
4201.1 Stafford Hall	4131.1 Stafford Hall
4231.1 Stafford Hall	4161.1 Stafford Hall
4261.1 Stafford Hall	4191.1 Stafford Hall
4291.1 Stafford Hall	4221.1 Stafford Hall
4321.1 Stafford Hall	4251.1 Stafford Hall
4351.1 Stafford Hall	4281.1 Stafford Hall
4381.1 Stafford Hall	4311.1 Stafford Hall
4411.1 Stafford Hall	4341.1 Stafford Hall
4441.1 Stafford Hall	4371.1 Stafford Hall
4471.1 Stafford Hall	4401.1 Stafford Hall
4501.1 Stafford Hall	4431.1 Stafford Hall
4531.1 Stafford Hall	4461.1 Stafford Hall
4561.1 Stafford Hall	4491.1 Stafford Hall
4591.1 Stafford Hall	4521.1 Stafford Hall
4621.1 Stafford Hall	4551.1 Stafford Hall
4651.1 Stafford Hall	4581.1 Stafford Hall
4681.1 Stafford Hall	4611.1 Stafford Hall
4711.1 Stafford Hall	4641.1 Stafford Hall
4741.1 Stafford Hall	4671.1 Stafford Hall
4771.1 Stafford Hall	4701.1 Stafford Hall
4801.1 Stafford Hall	4731.1 Stafford Hall
4831.1 Stafford Hall	4761.1 Stafford Hall
4861.1 Stafford Hall	4791.1 Stafford Hall
4891.1 Stafford Hall	4821.1 Stafford Hall
4921.1 Stafford Hall	4851.1 Stafford Hall
4951.1 Stafford Hall	4881.1 Stafford Hall
4981.1 Stafford Hall	4911.1 Stafford Hall
5011.1 Stafford Hall	4941.1 Stafford Hall
5041.1 Stafford Hall	4971.1 Stafford Hall
5071.1 Stafford Hall	5001.1 Stafford Hall
5101.1 Stafford Hall	5031.1 Stafford Hall
5131.1 Stafford Hall	5061.1 Stafford Hall
5161.1 Stafford Hall	5091.1 Stafford Hall
5191.1 Stafford Hall	5121.1 Stafford Hall
5221.1 Stafford Hall	5151.1 Stafford Hall
5251.1 Stafford Hall	5181.1 Stafford Hall
5281.1 Stafford Hall	5211.1 Stafford Hall
5311.1 Stafford Hall	5241.1 Stafford Hall
5341.1 Stafford Hall	5271.1 Stafford Hall
5371.1 Stafford Hall	5301.1 Stafford Hall
5401.1 Stafford Hall	5331.1 Stafford Hall
5431.1 Stafford Hall	5361.1 Stafford Hall
5461.1 Stafford Hall	5391.1 Stafford Hall
5491.1 Stafford Hall	5421.1 Stafford Hall
5521.1 Stafford Hall	5451.1 Stafford Hall
5551.1 Stafford Hall	5481.1 Stafford Hall
5581.1 Stafford Hall	5511.1 Stafford Hall
5611.1 Stafford Hall	5541.1 Stafford Hall
5641.1 Stafford Hall	5571.1 Stafford Hall
5671.1 Stafford Hall	5601.1 Stafford Hall
5701.1 Stafford Hall	5631.1 Stafford Hall
5731.1 Stafford Hall	5661.1 Stafford Hall
5761.1 Stafford Hall	5691.1 Stafford Hall
5791.1 Stafford Hall	5721.1 Stafford Hall
5821.1 Stafford Hall	5751.1 Stafford Hall
5851.1 Stafford Hall	5781.1 Stafford Hall
5881.1 Stafford Hall	5811.1 Stafford Hall
5911.1 Stafford Hall	5841.1 Stafford Hall
5941.1 Stafford Hall	5871.1 Stafford Hall
5971.1 Stafford Hall	5901.1 Stafford Hall
6001.1 Stafford Hall	5931.1 Stafford Hall
6031.1 Stafford Hall	5961.1 Stafford Hall
6061.1 Stafford Hall	5991.1 Stafford Hall
6091.1 Stafford Hall	6021.1 Stafford Hall
6121.1 Stafford Hall	6051.1 Stafford Hall
6151.1 Stafford Hall	6081.1 Stafford Hall
6181.1 Stafford Hall	6111.1 Stafford Hall
6211.1 Stafford Hall	6141.1 Stafford Hall
6241.1 Stafford Hall	6171.1 Stafford Hall
6271.1 Stafford Hall	6201.1 Stafford Hall
6301.1 Stafford Hall	6231.1 Stafford Hall
6331.1 Stafford Hall	6261.1 Stafford Hall
6361.1 Stafford Hall	6291.1 Stafford Hall
6391.1 Stafford Hall	6321.1 Stafford Hall
6421.1 Stafford Hall	6351.1 Stafford Hall
6451.1 Stafford Hall	6381.1 Stafford Hall
6481.1 Stafford Hall	6411.1 Stafford Hall
6511.1 Stafford Hall	6441.1 Stafford Hall
6541.1 Stafford Hall	6471.1 Stafford Hall
6571.1 Stafford Hall	6501.1 Stafford Hall
6601.1 Stafford Hall	6531.1 Stafford Hall
6631.1 Stafford Hall	6561.1 Stafford Hall
6661.1 Stafford Hall	6591.1 Stafford Hall
6691.1 Stafford Hall	6621.1 Stafford Hall
6721.1 Stafford Hall	6651.1 Stafford Hall
6751.1 Stafford Hall	6681.1 Stafford Hall
6781.1 Stafford Hall	6711.1 Stafford Hall
6811.1 Stafford Hall	6741.1 Stafford Hall
6841.1 Stafford Hall	6771.1 Stafford Hall
6871.1 Stafford Hall	6801.1 Stafford Hall
6901.1 Stafford Hall	6831.1 Stafford Hall
6931.1 Stafford Hall	6861.1 Stafford Hall
6961.1 Stafford Hall	6891.1 Stafford Hall
6991.1 Stafford Hall	6922.1 Stafford Hall



For more information, visit the website at [www.northernneckheritage.com](http://www.northernneckheritage.com).







# Tidal Potomac Segment

## Captain John Smith Chesapeake NHT

Exploratory voyages of  
Captain Smith

American Indian societies  
and cultures in the early  
17<sup>th</sup> century

The Bay's natural history  
and how it has changed  
since Smith's voyages

**Captain  
John Smith**

1600

1700

## Potomac Heritage NST

A national meeting ground  
of ideas and practices and a  
celebration of regional  
diversity

Trail corridor includes  
portions of five  
physiographic regions

The Potomac as crossroads  
of opportunity, diversity and  
conflict.

**War of  
1812**

1800

## Star-Spangled Banner NHT

The war established a  
foundation for U.S economic  
independence and military  
strength

Chesapeake region as a  
prime target for British

War's influence on the  
evolution of government and  
commerce

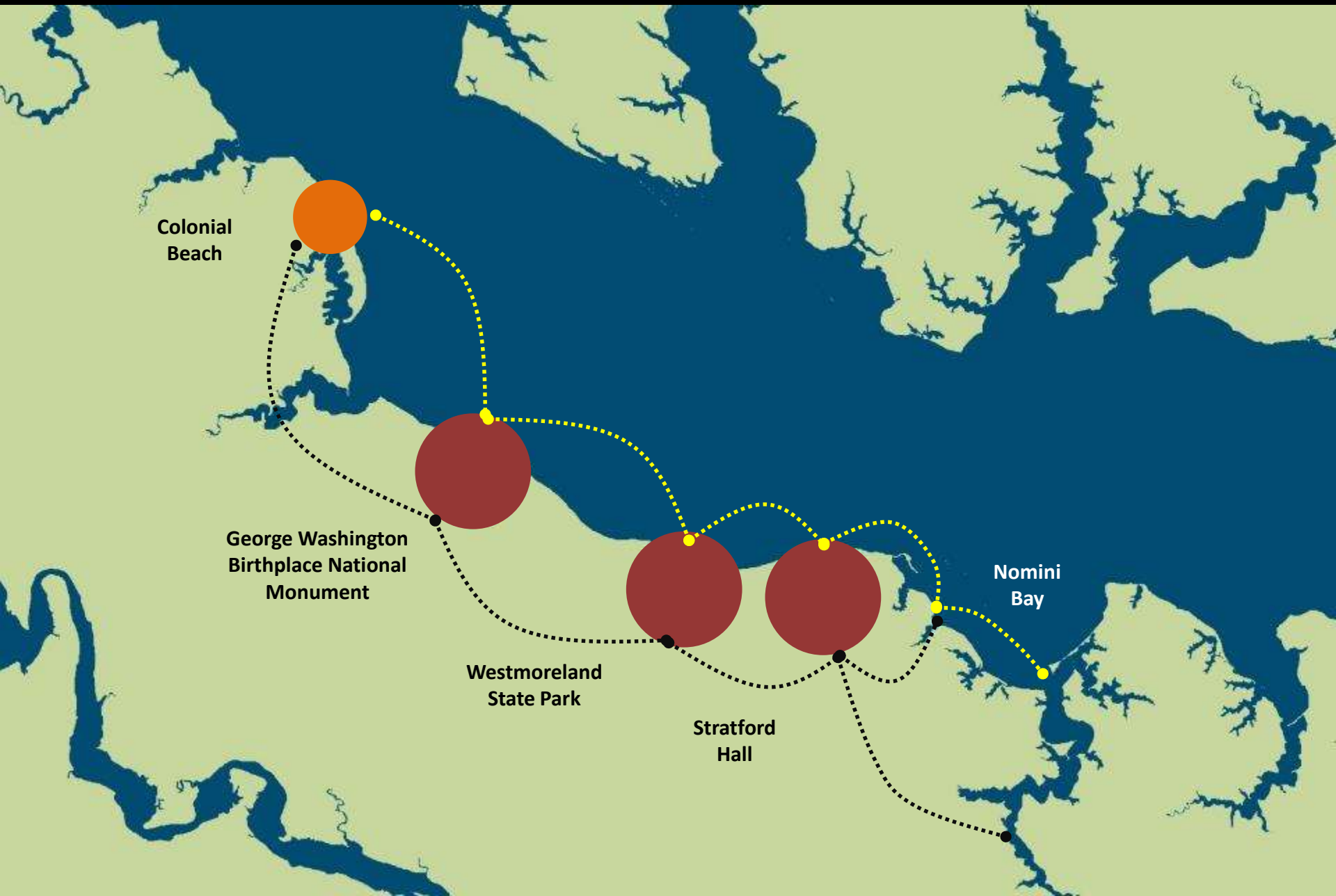
U.S flag and the national  
anthem, and their inspiration  
of a renewed U.S nationalism

1900

2000

Potomac River Heritage

# National Trail Experiences That Connect Sites



Colonial Beach

George Washington Birthplace National Monument

Westmoreland State Park

Stratford Hall

Nomini Bay





National Park Service  
U.S. Department of the Interior



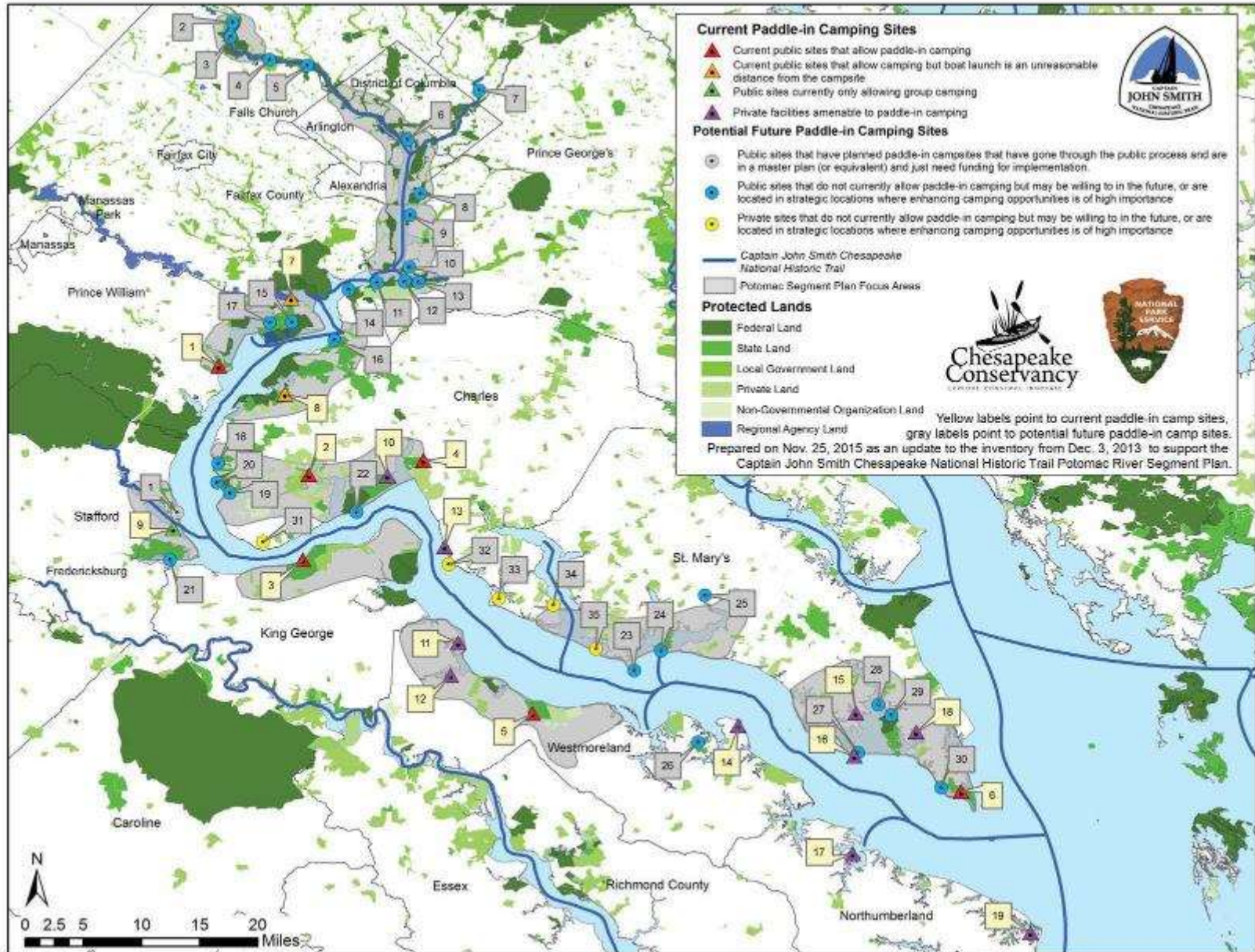
A Partnership for Enhancing the National Trails along the Tidal Potomac River

# Potomac River Segment Plan

2015



# Potomac Paddle-in Campsite Network





# Potomac Paddling Itineraries

PADDLE THE POTOMAC

## Fort Washington Marina DRAFT

PADDLE THE POTOMAC

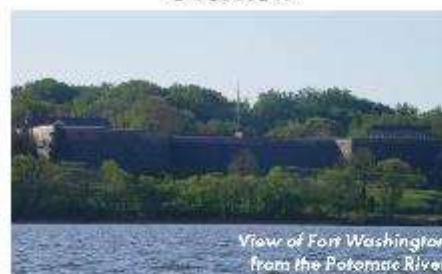
## Fort Washington Marina DRAFT



- 1 Fort Washington Marina**  
NPS Campsite on the Fort Washington Marina is a full-service marina with a working boatyard, waterfront restaurant and paddling facilities.
- 2 Tidal Islands near Hard Bargain Farm**  
Breakfast and walking opportunities emerge the shoreline vegetation. This area is preserved to many plants, fish and mammals.
- 3 Mockley Point**  
High winds, strong tides and large waves make it may be possible to paddle in the open water conditions.
- 4 Rip-rap shoreline along Piscataway Park**  
Shoreline revegetation along the mouth of the Skowhegan Creek to protect recreational Piscataway Park and along the Potomac River. In addition, there are various wildlife shoreline restoration and projects in the area.
- 5 Views to George Washington's Mount Vernon Estate**  
Piscataway Park, donated by the Mount Vernon Foundation in 1972. In the 1960s preserves many rooms of historic views can be seen from George Washington's Mount Vernon and other well-known areas such as the National Mall, and a historic village built in 1825. The National Colonial Farm, established by the National Foundation in 1958, demonstrates 18th-century agriculture by growing crops based on animals and crops. Accessible from fishing pier, boat dock or beach.

- 6 Views to Fort Hunt Park**  
Originally part of George Washington's Mount Vernon estate, Fort Hunt defended the Potomac River during the Spanish American War, the Civil War, and the American Civil War. It was used as a training site for the Great Depression, and today is a park with a historic site, a museum, and a park. It is a park with a historic site, a museum, and a park. It is a park with a historic site, a museum, and a park.
- 7 Views to Fort Washington Lighthouse**  
An unusual lighthouse located on the banks of the Potomac River, the lighthouse of Fort Washington, built in 1874. It is a lighthouse with a good view of the Potomac River. The lighthouse was used as a lighthouse from 1874 to 1904 and 1890s.
- 8 Views to Fort Washington**  
The fort was built in 1791 and was initially constructed in 1874. It is a lighthouse with a good view of the Potomac River. The lighthouse was used as a lighthouse from 1874 to 1904 and 1890s.
- 9 Views to Fort Washington Park**  
The park is located in the yellow house on the hill. The fort of the fort, a historic site, is a historic site. The fort was used as a lighthouse from 1874 to 1904 and 1890s. There is a trail that follows the perimeter of the park, allowing the opportunity for a hike or walk.

### Overview



View of Fort Washington from the Potomac River

Launch your paddling team from Fort Washington Marina, paddle out to see the imposing walls of Fort Washington, look upstream and imagine a squadron of warships making their way up the Potomac, then duck back into Piscataway Creek and enjoy the natural beauty of a shoreline protected by conservation easements. While you're in the area, pay a visit to Fort Washington Park to compare the view when standing on the bulwarks of the fort.

### Quick Look

<b>Skill Level:</b>	All levels
<b>Length:</b>	4.5 miles (1 1/2 Day)
<b>Restrooms:</b>	Located inside marina office building
<b>Water:</b>	Water level varies; located at reservoir locally, vending machines located at marina office
<b>Parking:</b>	Available at marina, overnight parking
<b>Cost:</b>	\$5 fee to launch personal boat from marina, rental boat costs vary by type/duration
<b>Launch Point:</b>	38°42'9.21"N, 77°1'27.24"W
<b>Take-out Points:</b>	(same)
<b>Type of Vessel:</b>	Kayak, Canoe or SUP
<b>On-site Outfitters:</b>	Yes [seasonal/weekend availability]
<b>On-site Rentals:</b>	Yes [seasonal/weekend availability]
<b>Site Address:</b>	13600 King Charles Terrace Fort Washington, MD 20744

### Logistics

- Fort Washington Marina is a full-service marina with a working boatyard, parking can sometimes be confusing to the newcomer when first visiting. Generally, designated parking spots are available near the marina office. If you are not certain about where to park, speak with the office staff or volunteer staff.
- There is no free public launch site, the kayak dock located on one of the marina piers (the kayak dock is occasionally moved to different piers at the marina) is a private one owned by the on-site outfitter and not accessible to the public. For a \$5 fee, launch at the marina boat ramp but be aware of any boaters that may be queuing up to use the same ramp.
- Launching from Fort Washington Marina gives paddlers several options for routes and lengths of trips. Paddling into Piscataway Creek provides a more sheltered route and may be the best option on windy days or at times when there is a lot of powerboat traffic on the river.
- The channel for motorboat traffic at the marina goes along the end of the piers. Stay out of the channel when paddling near the marina.
- The main Potomac River channel for motorboat traffic passes very close to the point of Fort Washington Park. Be careful not to get stuck in the busy channel and stay with your group when paddling on the river when motorboat traffic is present.
- Strong tidal currents are common at the mouth of Piscataway Creek. If a current can be overcome by paddling against it, but be aware of the tides as paddling against a tide will tire you faster.
- There is a restaurant located at Fort Washington Marina is a convenient place to grab dinner after paddling.
- The marina restroom also includes full shower facilities and a laundry room.

Safety Information  
Emergency call 911  
U.S. Park Police 202-410-7500



For more Paddle the Potomac Itineraries  
[www.findyourchesapeake.com](http://www.findyourchesapeake.com)



# Potomac Riverkeeper Network



11 DAYS. 12 PADDLES.  
UNLIMITED FUN.  
MAKE A SPLASH FOR  
CLEAN WATER!  
JUNE 8<sup>TH</sup> - 19<sup>TH</sup>



INFO + REGISTRATION  
[potomacriverkeepernetwork.org](http://potomacriverkeepernetwork.org)

@potomacriv  
/potomacriverkeepernetwork  
#paddlingpotomac #paddleshenandoah

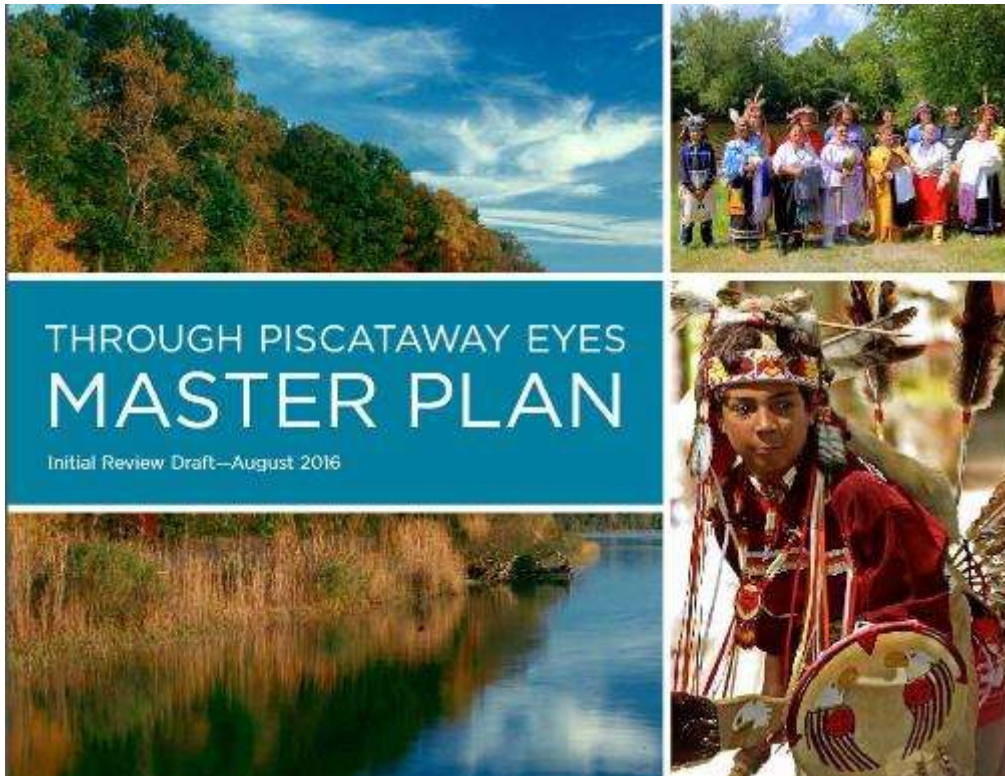
POTOMAC RIVERKEEPER NETWORK





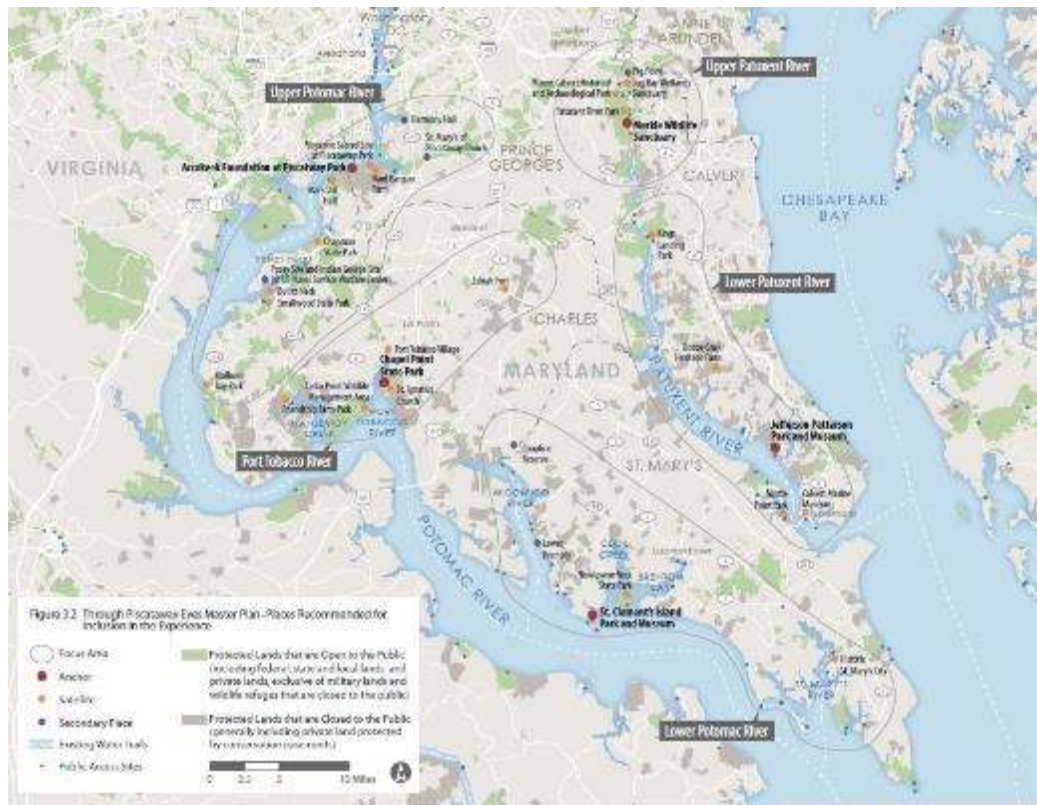
# Through Piscataway Eyes

The Piscataway people wish to build a network of authentic interpretive and educational experiences that will tell their stories at places within their homeland in Southern Maryland. Visitors will come to understand the Piscataway as a vibrant culture today, and will gain a deeper understanding of Piscataway life before and after the arrival of Europeans in the Potomac River watershed.



At multiple places important to Piscataway Indians today, their stories will be told "Through Piscataway Eyes".

# Through Piscataway Eyes



After an eighteen month long planning effort, the draft master plan has just been delivered and is currently under review by the Through Piscataway Eyes steering committee.

Potomac places in Maryland that figure prominently in the plan include:

- Lower Potomac:** St. Clement's Island Park, Newtowne Neck State Park, and Historic St. Mary's City
- Port Tobacco River:** Chapel Point State Park
- Upper Potomac:** Piscataway Park and Moyaone Sacred Site, Chapman State Park, Bullitt Neck



# Mallows Bay National Marine Sanctuary



Photos by Don Shomette

Office of National Marine Sanctuaries  
National Oceanic and Atmospheric Administration



## Proposed Malloys Bay – Potomac River National Marine Sanctuary



Map of proposed boundaries

### Sanctuary Designation Process

The process for designating a new national marine sanctuary has four steps:

**Scoping:** NOAA announces its intent to designate a new national marine sanctuary and asks the public for input on potential boundaries, resources that could be protected, issues NOAA should consider and any information that should be included in the resource analysis.

**Sanctuary Proposal:** NOAA prepares draft designation documents including a draft management plan, draft environmental impact statement that analyzes a range of alternatives, proposed regulations and proposed boundaries. NOAA may also form an advisory council to help inform the proposal and focus stakeholder participation.

**Public Review:** The public, agency partners, tribes and other stakeholders provide input on the draft documents. NOAA considers all input and determines appropriate changes.

**Sanctuary Designation:** NOAA makes a final decision and prepares final documents. Before the designation becomes effective, the Governor reviews the documents. Congress also has the opportunity to review the documents.

### Malloys Bay – Potomac River

For the first time since 2000, NOAA has announced its intent to designate new sanctuaries under the National Marine Sanctuaries Act. NOAA is asking for the public's input on protecting Malloys Bay – Potomac River, a maritime heritage resource area in Maryland.

Malloys Bay – Potomac River is a 14 square mile area of the tidal Potomac River adjacent to Charles County. It was nominated as a national marine sanctuary through the Sanctuary Nomination Process with broad community support.

The area encompasses historic shipwrecks of national significance that merit the additional management authority of the National Marine Sanctuaries Act. Nearly 200 known vessels span from the Revolutionary War through the present, and include the remains of the largest "Ghost Fleet" of World War I wooden steamships built for the U.S. Emergency Fleet, which are listed on the National Register of Historic Places.

Malloys Bay is a largely undeveloped landscape and waterscape identified as one of the most ecologically valuable in Maryland, as the ship remains provide important habitat for fish and wildlife, including rare, threatened and endangered species.

### About the nomination

In September 2014, the state of Maryland submitted a nomination to be added to NOAA's inventory of places to be considered as national marine sanctuaries. The nomination focused on protecting and interpreting the nationally significant collection of shipwrecks, fostering partnerships with education and research partners, and increasing opportunities for tourism and economic development.

It was endorsed by a diverse coalition of organizations and individuals at local, state, regional and national levels. This included elected officials, Native Americans, historical societies, businesses, museums, and environmental, recreational, conservation, fishing, tourism and educational groups.



Malloys Bay in the Potomac River is home to an extraordinary collection of shipwrecks from the Revolutionary War through the present.

<http://sanctuaries.noaa.gov/malloys-bay/>

# Initiatives Specific to the Northern Neck

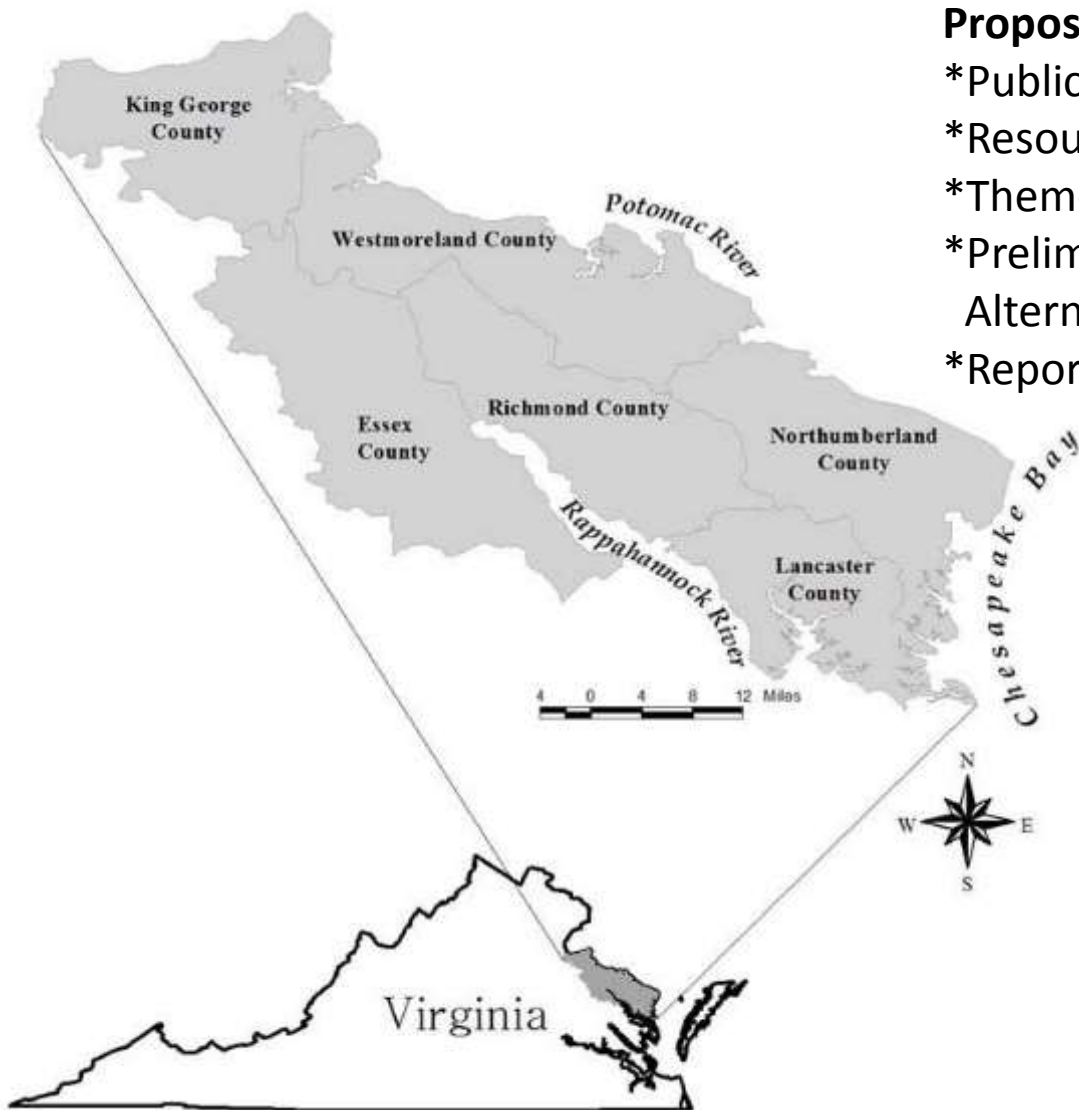
1. Northern Neck Heritage Area Update
2. Recent NPS CHBA investments in region
3. Other activities that NPS supports





# Northern Neck National Heritage Area

## Feasibility Study from 2010



### Proposed Schedule Milestones

*Public Scoping	Spring 2010
*Resource Assessment	Summer/Fall 2010
*Theme Development	Fall 2010
*Preliminary Management Alternatives	Spring 2011
*Report	Fall 2011



# Recent NPS CHBA Investments

## Caledon



## Crow's Nest







Chippokes Plantation  
State Park





# FY17 NPS CHBA Investments

**Westmoreland  
and Widewater  
State Parks  
Visitor Center  
Exhibits**



**Jean R. Packard  
Occoquan Center  
1608 Room at  
Occoquan Regional  
Park**

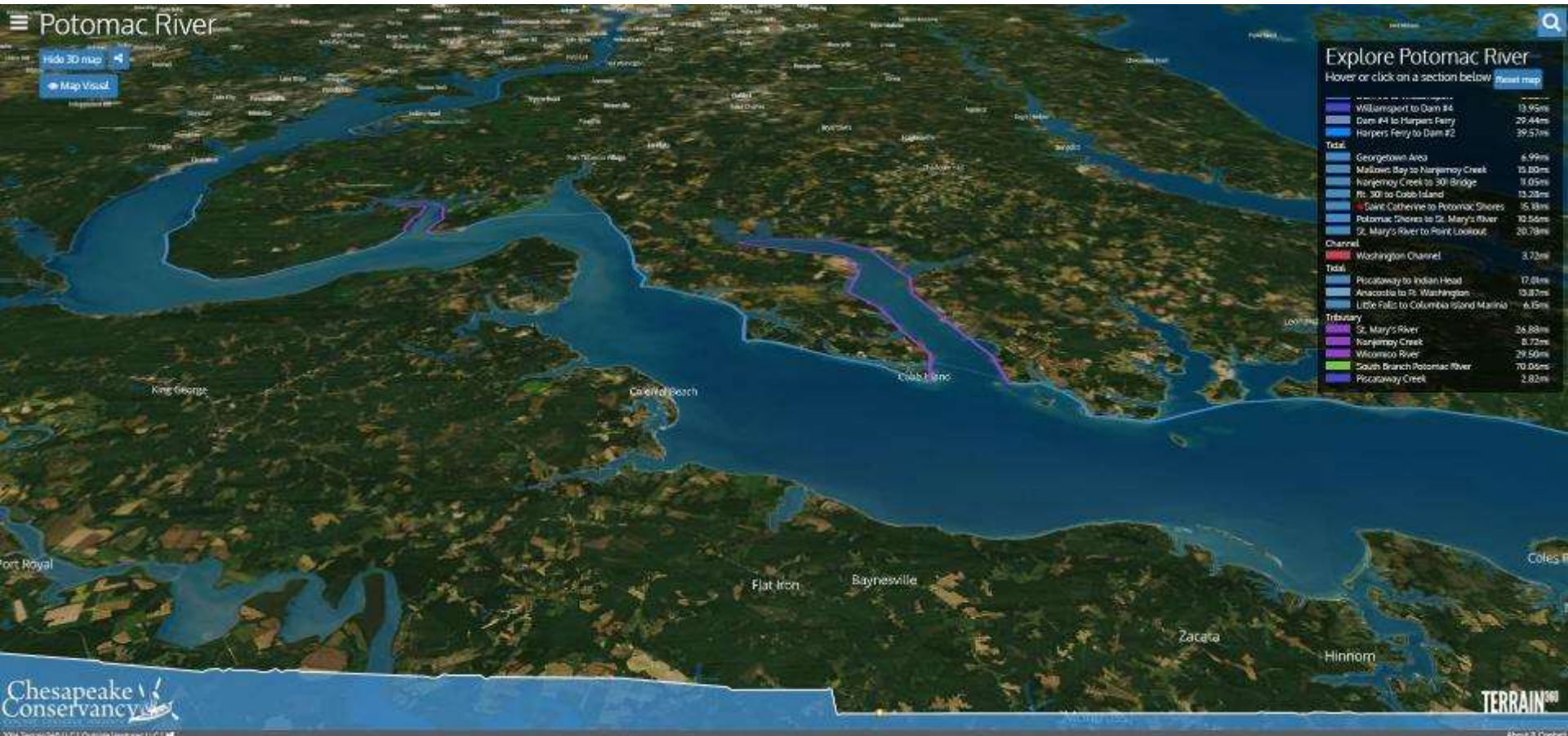


# Terrain 360 – Water View of the Potomac



# Terrain 360 – Northern Neck

Northern Neck shoreline currently being filmed, should be uploaded to Terrain 360 website very soon.



<https://www.terrain360.com/map/potomac-river-2>



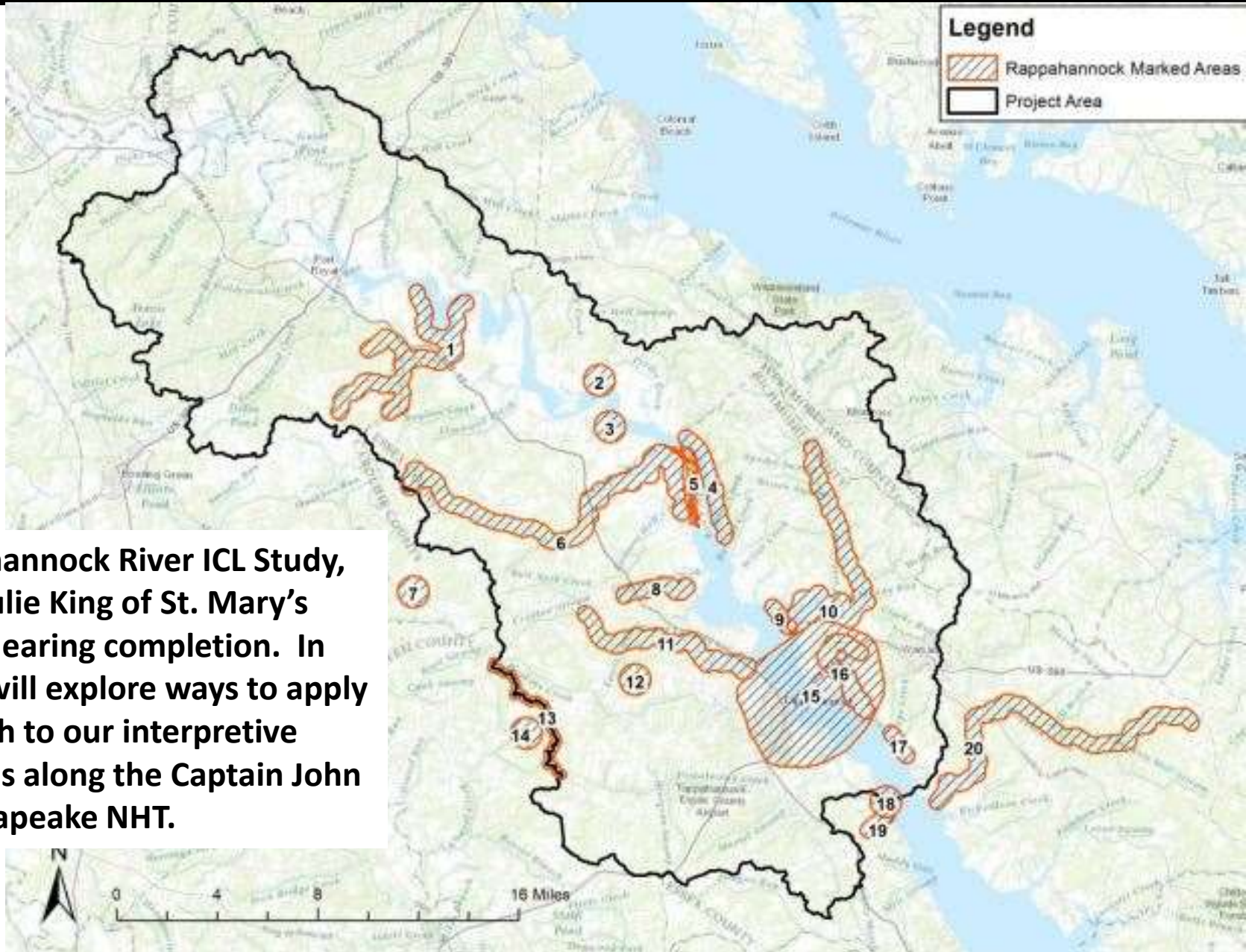
# Indigenous Cultural Landscapes

Considered trail-related resources to the Captain John Smith Chesapeake National Historic Trail, these evocative places may be important to descendant communities today as well as to conservation strategies in the Chesapeake watershed. Ongoing research is helping to define and identify these large landscapes.



Indigenous Cultural Landscapes (ICL's) demonstrate aspects of the natural and cultural resources that supported American Indian lifeways and settlements in the early 17th century.

# Rappahannock ICL Study



The Rappahannock River ICL Study, led by Dr. Julie King of St. Mary's College, is nearing completion. In 2017, NPS will explore ways to apply this research to our interpretive work at sites along the Captain John Smith Chesapeake NHT.



# Agenda

## 1. Introduction

- a. NPS Initiatives Related to the Chesapeake Bay
- b. NPS Initiatives related to the Potomac River
- c. NPS Initiatives related to the Northern Neck

## 2. Discussion

- a. Who can be voice/advocate of Northern Neck for NPS partnership projects?
- b. What projects are coming up soon that could be leveraged for NPS funding?
- c. How can NPS do more?
- d. What else should we know about?

## 3. Wrap-up

# Future opportunities for NPS Partnership

1. NPS CAJO Potomac River Unigridd
2. Interpretive Program Opportunities
3. New or enhanced public access sites





# NPS CAJO Unigrig – Potomac River

**Along the James River, in the early 1600s...**  
The forest was thick, and the footpaths were long. Indians living along the James River traveled most easily by water. When the English arrived, they did too.



The forest was thick, and the footpaths were long. Indians living along the James River traveled most easily by water. When the English arrived, they did too.

By the time the first English settlers arrived in 1607, the Powhatan Indians were already living along the James River. The Powhatan Indians were a group of Algonquian-speaking people who lived in the area around the James River. They were the first Native Americans to meet the English settlers. The Powhatan Indians were a group of Algonquian-speaking people who lived in the area around the James River. They were the first Native Americans to meet the English settlers.

By the time the first English settlers arrived in 1607, the Powhatan Indians were already living along the James River. The Powhatan Indians were a group of Algonquian-speaking people who lived in the area around the James River. They were the first Native Americans to meet the English settlers.



## John Smith and Jamestown

John Smith led the first English colony in North America, Jamestown, in 1607. He was a soldier and explorer who had been in the Netherlands and France before coming to America. He was a strong leader and a good organizer. He helped the colony survive its first winter. He also explored the area around the James River. He was killed in 1607, but his name lives on in the name of the city of John Smith Park in Washington, D.C.

**To the Falls**  
The falls were a major obstacle for the early settlers. They had to find a way to get their supplies up the river. They built a trail that went up the side of the falls. This trail is now known as the Smith Trail. It is a 1.5-mile trail that goes from the falls to the city of John Smith Park. It is a challenging trail, but it is a great way to see the falls and the surrounding area.

**Warned by the Warraskoyack**  
The Warraskoyack was a Native American who lived in the area around the James River. He was a powerful chief and a good warrior. He was the first Native American to meet the English settlers. He warned them about the Powhatan Indians. He told them that the Powhatan Indians were a powerful and dangerous people. He told them that they should be careful of the Powhatan Indians. He was a good friend and a good advisor. He helped the English settlers survive their first winter. He was killed in 1607, but his name lives on in the name of the city of John Smith Park in Washington, D.C.



Illustration of a Native American village with several large round dwellings.

## Plan Your Adventure

The Capital Area Trail is a 1.5-mile trail that goes from the falls to the city of John Smith Park. It is a challenging trail, but it is a great way to see the falls and the surrounding area. The trail is a 1.5-mile trail that goes from the falls to the city of John Smith Park. It is a challenging trail, but it is a great way to see the falls and the surrounding area. The trail is a 1.5-mile trail that goes from the falls to the city of John Smith Park. It is a challenging trail, but it is a great way to see the falls and the surrounding area.

Use these resources to learn more about what the Smith trail offers.

- 1. Visit the falls and the surrounding area. The falls are a major attraction and a great way to see the surrounding area. The falls are a major attraction and a great way to see the surrounding area.
- 2. Visit the falls and the surrounding area. The falls are a major attraction and a great way to see the surrounding area. The falls are a major attraction and a great way to see the surrounding area.
- 3. Visit the falls and the surrounding area. The falls are a major attraction and a great way to see the surrounding area. The falls are a major attraction and a great way to see the surrounding area.
- 4. Visit the falls and the surrounding area. The falls are a major attraction and a great way to see the surrounding area. The falls are a major attraction and a great way to see the surrounding area.
- 5. Visit the falls and the surrounding area. The falls are a major attraction and a great way to see the surrounding area. The falls are a major attraction and a great way to see the surrounding area.



**Use these resources to learn more about what the Smith trail offers.**

- 1. Visit the falls and the surrounding area. The falls are a major attraction and a great way to see the surrounding area. The falls are a major attraction and a great way to see the surrounding area.
- 2. Visit the falls and the surrounding area. The falls are a major attraction and a great way to see the surrounding area. The falls are a major attraction and a great way to see the surrounding area.
- 3. Visit the falls and the surrounding area. The falls are a major attraction and a great way to see the surrounding area. The falls are a major attraction and a great way to see the surrounding area.
- 4. Visit the falls and the surrounding area. The falls are a major attraction and a great way to see the surrounding area. The falls are a major attraction and a great way to see the surrounding area.
- 5. Visit the falls and the surrounding area. The falls are a major attraction and a great way to see the surrounding area. The falls are a major attraction and a great way to see the surrounding area.



## When the James River Was the Powhatan

The Powhatan Indians were a group of Algonquian-speaking people who lived in the area around the James River. They were the first Native Americans to meet the English settlers. The Powhatan Indians were a group of Algonquian-speaking people who lived in the area around the James River. They were the first Native Americans to meet the English settlers.

Use these resources to learn more about what the Smith trail offers.

- 1. Visit the falls and the surrounding area. The falls are a major attraction and a great way to see the surrounding area. The falls are a major attraction and a great way to see the surrounding area.
- 2. Visit the falls and the surrounding area. The falls are a major attraction and a great way to see the surrounding area. The falls are a major attraction and a great way to see the surrounding area.
- 3. Visit the falls and the surrounding area. The falls are a major attraction and a great way to see the surrounding area. The falls are a major attraction and a great way to see the surrounding area.
- 4. Visit the falls and the surrounding area. The falls are a major attraction and a great way to see the surrounding area. The falls are a major attraction and a great way to see the surrounding area.
- 5. Visit the falls and the surrounding area. The falls are a major attraction and a great way to see the surrounding area. The falls are a major attraction and a great way to see the surrounding area.

Illustration of a 17th-century sailing ship on the James River with a Native American in a canoe nearby.

Illustration of a Native American village with several large round dwellings.

Illustration of a Native American village with several large round dwellings.

Illustration of a Native American village with several large round dwellings.



# NPS CAJO – Roving Ranger



**Coming Spring 2017!**





# Kids in Kayaks Program

Jul  
18  
2016

## At home, on the water in Baltimore



On a June morning at Baltimore's Middle Branch Park, a few steps from the Patapsco River, Molly Gallant addresses a group of eighth graders like a drill sergeant in a life vest.

"Hands up if this is your first time in a kayak, ever," said Gallant, the high sun irradiating her tanned, freckled shoulders and red hair. Gallant, an Outdoor Recreation Programmer with Baltimore City Recreation and Parks, counted aloud six raised hands.

"For those of you that have not been out before, the secret to kayaking is pressing your knees to the sides, okay?" Gallant said. "And you let your hips rock with the water and your upper body stay straight."

The few dozen students had come that morning from Collington Square Elementary School, located roughly two miles northeast of Baltimore's Inner Harbor, for a program called Kids in Kayaks. In its first year, roughly 500 Baltimore students have taken part in the program, funded by the National Park Service and the Baltimore National Heritage Area. It has given many children their first experience on the water that has defined their hometown.

The program began with in-classroom orientation by staff from the National Park Service Chesapeake Bay Office.



# Agenda

## 1. Introduction

- a. NPS Initiatives Related to the Chesapeake Bay
- b. NPS Initiatives related to the Potomac River
- c. NPS Initiatives related to the Northern Neck

## 2. Discussion

- a. Who can be voice/advocate of Northern Neck for NPS partnership projects?
- b. What projects are coming up soon that could be leveraged for NPS funding?
- c. How can NPS do more?
- d. What else should we know about?

## 3. Wrap-up

- a. Questions or Comments
- b. Where do we go from here?





**Matt Jagunic, Outdoor Recreation Planner  
National Park Service Chesapeake Bay Office  
410 Severn Ave, Suite 314  
Annapolis, MD 21403  
[matt\\_jagunic@nps.gov](mailto:matt_jagunic@nps.gov)**