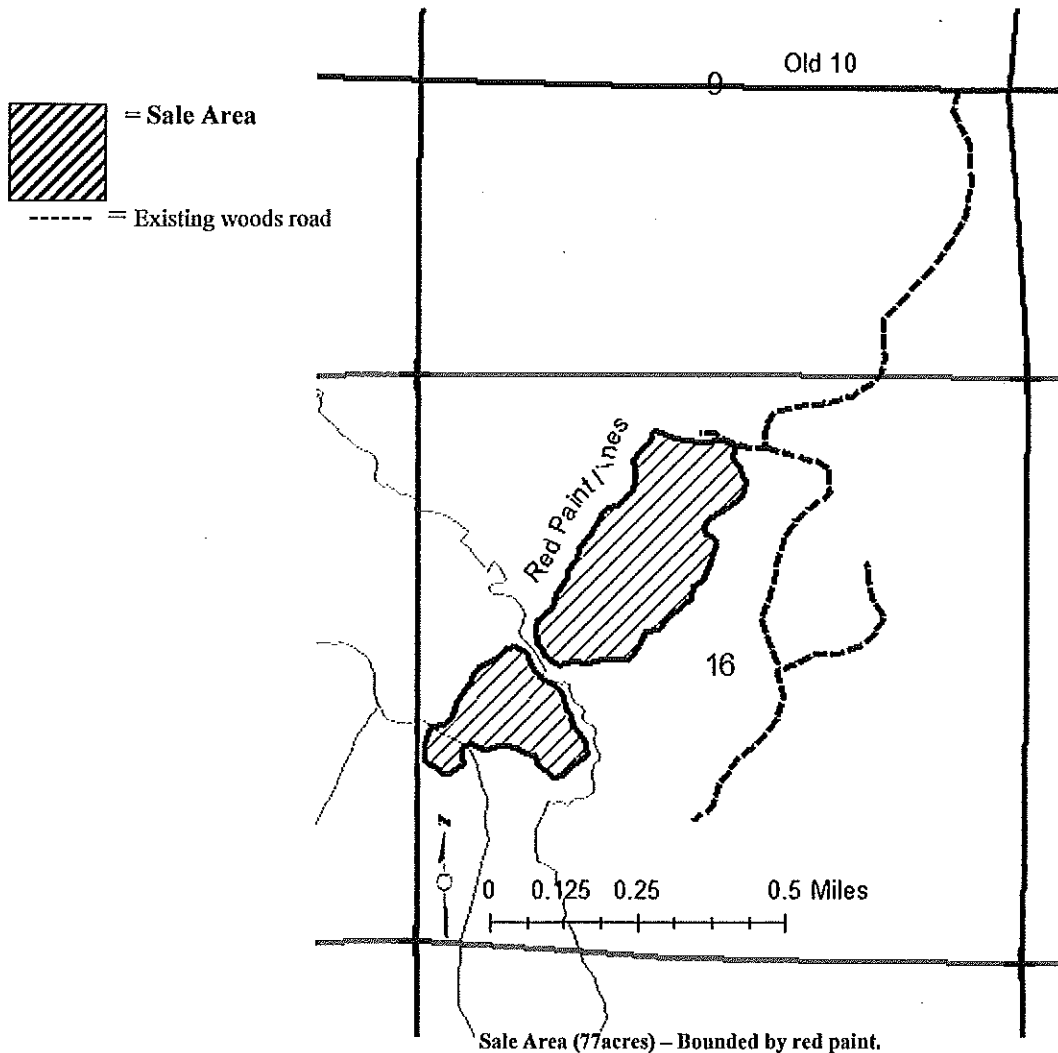


**Iron County Forest Timber Sale # \_\_\_\_\_ Tract# 10-13**  
**T46 R1E Sec 16 (Saxon)**



The mark of  
responsible forestry  
#SCS-FM/COC-00083G-h  
FSC 100%



N  
↑  
CN - 12/12  
Scale:  
4" = ~1 Mile

**Harvest Specifications:** Cut all trees marked with orange paint. Harvest all merchantable aspen throughout the sale area. Utilize all trees to a 4-inch top diameter. Equipment use will be restricted to very dry or frozen ground conditions due to wet soil conditions. General operational period will most likely be December through March. Hand cutting, however, can be done anytime excluding the months of April, May and June. Care will be taken to avoid damaging hemlock. Follow all BMPs to eliminate all Rutting. No harvest activity April-June.

<u>Species</u>	<u>Estimated Volume</u>	<u>Minimum Bid Value/Unit</u>
Hard Maple	7 MBF	\$213.00/MBF
Basswood	25 MBF	106.00/MBF
Mixed Hdwd	5 MBF	106.00/MBF
Mixed Hardwood	500 Cords	15.30 Cord
Basswood Pulp	170 Cords	6.20 Cord
Aspen Pulp	80 Cords	15.30 Cord

**TRACT IS SFI & FSC CERTIFIED**

# IRON COUNTY FOREST

TIMBER SALE # \_\_\_\_\_

TRACT# 16-13

T45N, R2E. Section 16,17,20,21 (Pence)

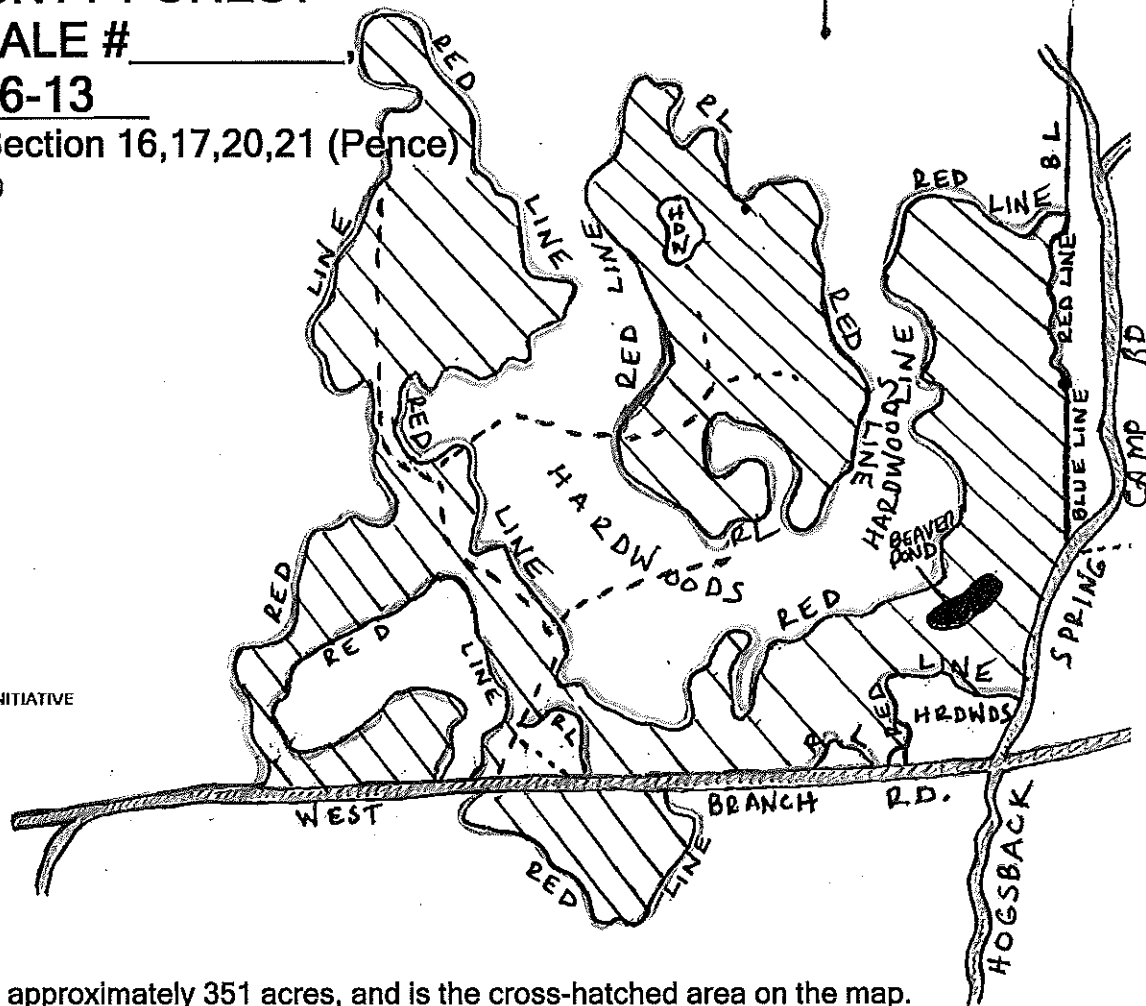
TRACT IS SFI & FSC CERTIFIED



The mark of  
responsible forestry  
#SCS-FM/COC-0083G-h  
FSC 100%



SUSTAINABLE FORESTRY INITIATIVE  
NSF-SFIS-1Y943



This sale area is approximately 351 acres, and is the cross-hatched area on the map.

Sale Prepared by: Tyler Wicklund

Scale: 1 inch = 1/4 mile

## Log Products:

Mixed Hardwoods  
Basswood

## Estimated Volume

10 MBF  
3 MBF

## Minimum Bid

\$ 90.00  
\$ 90.00

## Cordwood:

Aspen  
Mixed Hardwoods  
Spruce  
Balsam Fir  
Basswood

5050 Cords  
1270 Cords  
150 Cords  
75 Cords  
40 Cords

\$ 15.50  
\$ 15.50  
\$ 17.20  
\$ 12.90  
\$ 6.90

## Harvest Specifications:

Harvest all aspen, mixed hardwoods, balsam fir, and spruce containing at least one 100 inch pulpstick to a 4" minimum top diameter, and sawlogs to a 10" top diameter. No cutting of oak, hemlock, cedar and white pine. Follow all BMP's to prevent and minimize rutting. All slash will remain in harvested area. Sale area shall be kept free of litter at all times.

# Iron County Forest

Timber Sale # \_\_\_\_\_, Tract # 18-13

Section 22-T45-R2E

Pence



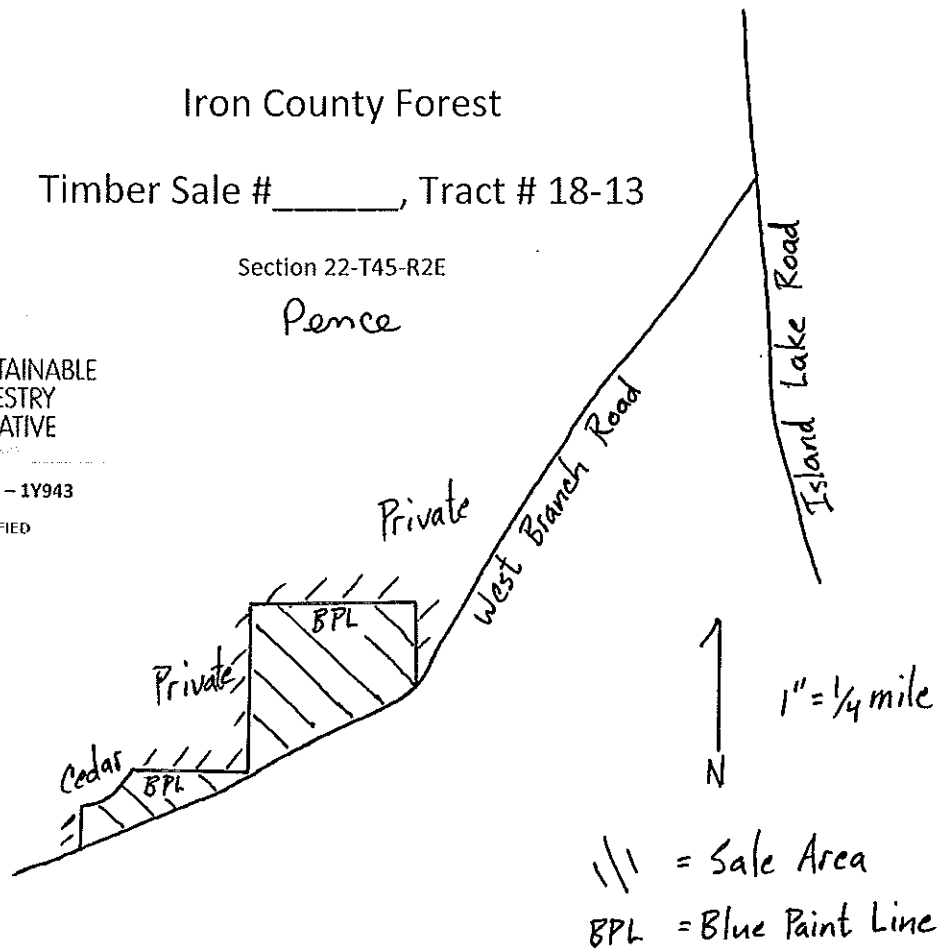
The mark of  
responsible forestry  
#SCS-FMLCOC-00030-N  
FSC 100%



SUSTAINABLE  
FORESTRY  
INITIATIVE

#NSF-SFIS - 1Y943

TRACT IS SFI & FSC CERTIFIED



21, 22  
28, 27

Sale prepared by Joe Vairus

Total sale area is 32 acres.

SPECIES	VOLUME	MINIMUM BID
Mixed Hardwood	11 MBF	\$125/MBF
Mixed Hardwood	420 cords	\$18/cord
Spruce	50 cords	\$20/cord
Balsam Fir	30 cords	\$15/cord

**Harvest Specifications:** Harvest all merchantable trees except hemlock, cedar, pine, and elm. Leave ash less than 8 inch dbh. Large cull trees may be left standing. Utilize pulpwood to a 4" minimum top and saw logs to a 10" minimum top. Logging will need to occur during frozen ground conditions. Follow Wisconsin BMPs at all times and eliminate rutting.

# Iron County Forest

Timber Sale # \_\_\_\_\_, Tract # 19-13

Section 25 T45N R2E (Carey)

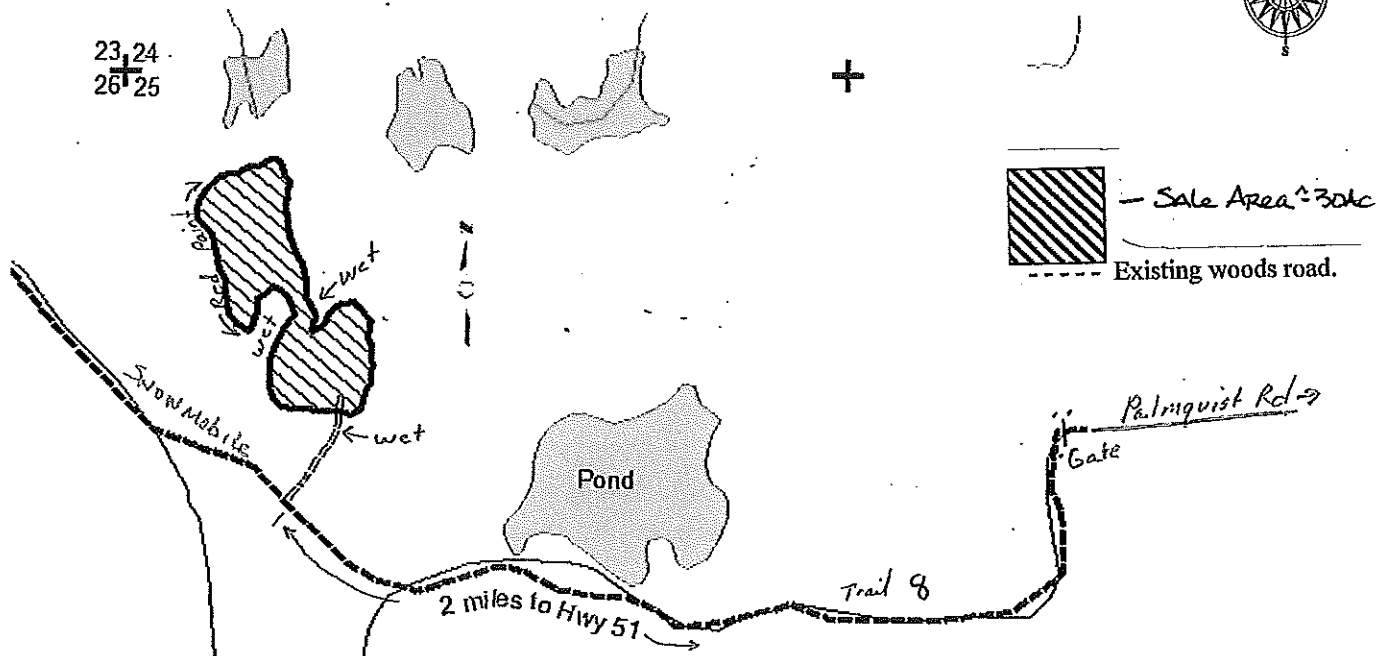
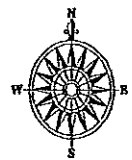


FSCS-FNUCO-00083G-h

HNSF-SFIS-1Y943

FSC 100%

Scale 1:15840  
Approx. 4"=1Mile



**Harvest Specifications:** Harvest all merchantable trees except Sugar Maple, Yellow Birch, Hemlock and White Pine. Utilize pulpwood to a 4 inch minimum top diameter. Follow all BMPs to protect water quality. Prevent rutting. Suggested harvest conditions: very dry or frozen ground due to wet soil conditions. Snowmobile trail will be kept open throughout the winter.

SPECIES	VOLUME	MINIMUM BID
Aspen	300 cords	\$15.30/cord
Mixed Hardwood	180 cords	\$15.30/cord
Basswood	20 cords	\$6.80/cord
Balsam Fir	15 cords	\$12.80/cord
Spruce	10 cords	\$25.50/cord
Mixed Hardwood	1 MBF	\$95.00/MBF

TRACT IS SFI & FSC CERTIFIED

# Iron County Forest

Timber Sale # \_\_\_\_\_, Tract # 20-13

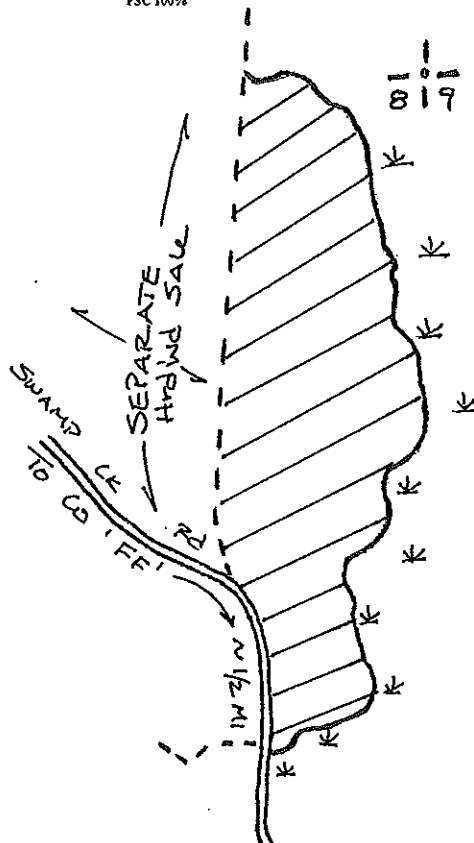
Section 8 T42N R2E (Mercer)



#SCS-FM/CO-00083G-h

#NSP-SFIS-1Y943

FSC 100%



Sale area is approximately 95 acres and is hatched on the map.

**Harvest Specifications:** Harvest all trees marked with orange paint. Harvest all merchantable Ironwood. Utilize saw logs to a 10 inch minimum top diameter, pulpwood to a 4 inch minimum top diameter. Protect quality advanced regeneration, especially Yellow Birch and Elm, from harvest damage. Follow all Wisconsin BMPs for Water Quality. No logging activity from April to July.

SPECIES	Estimated VOLUME	MINIMUM BID
Hard Maple	33 MBF	\$213.00/MBF
Mixed Hardwood	2 MBF	\$106.00/MBF
Basswood	15 MBF	\$106.00/MBF
Spruce (co-mingled)	10 Cords	24.90/cord
Mixed Hardwood	550 Cords	\$14.90/cord
Basswood	20 Cords	\$6.60/cord

# Iron County Forest

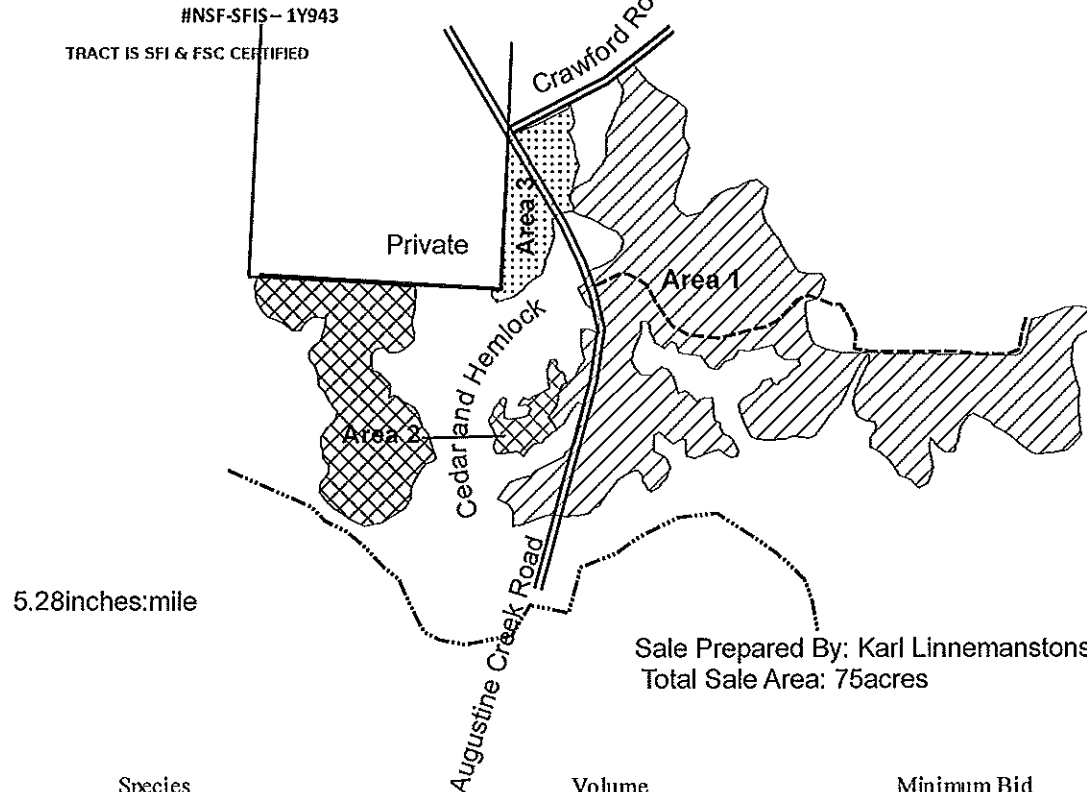
Timber Sale #\_\_\_\_\_, Tract # 21-13



The mark of  
responsible forestry  
FSC® C006090  
FSC 100%



Town of Knight  
T43NR1E  
Sec. 7 & 8



Species	Volume	Minimum Bid
Mixed Hardwood	420 cords	\$19.80
Aspen	160 cords	\$19.40
Balsam Fir	240 cords	\$16.20
Spruce	140 cords	\$21.60
Mixed Hardwood	5 MBF	\$71.00

## Harvest Specifications Area 1 (53 acres)

Harvest everything 2 inches dbh and up, except for cedar, hemlock, and pine. Utilize pulpwood to a 4 inch top diameter, sawlogs to a minimum 10 inch top diameter. Follow the BMP's and prevent/minimize rutting along with damage to residual trees. Sale boundaries is two red dots woods road.

## Harvest Specifications Area 2 (17 acres)

Harvest everything greater than 5 inches dbh. Leave all cedar, hemlock, and pine. Utilize pulpwood to a 4 inch top diameter, sawlogs to a minimum 10 inch top diameter. Follow the BMP's and prevent/minimize rutting along with damage to residual trees. Sale boundaries is solid red line and blue line.

## Harvest Specifications Area 3 (5 acres)

Harvest all trees marked with orange paint along with all aspen, balsam fir, and spruce. Utilize pulpwood to a 4 inch top diameter, sawlogs to a minimum 10 inch top diameter. Follow the BMP's and prevent/minimize rutting along with damage to residual trees. Sale boundaries is solid red line and blue line.

\*This is a winter only sale, harvest will take place December 1<sup>st</sup> to March 31<sup>st</sup>.

# Iron County Forest

Timber Sale #\_\_\_\_\_, Tract # 22-13



The mark of  
responsible forestry  
FSC® C006090  
FSC® FIA0000-00033-0-A  
FSC 100%



Town of Knight  
T43NR1E  
Sec. 23

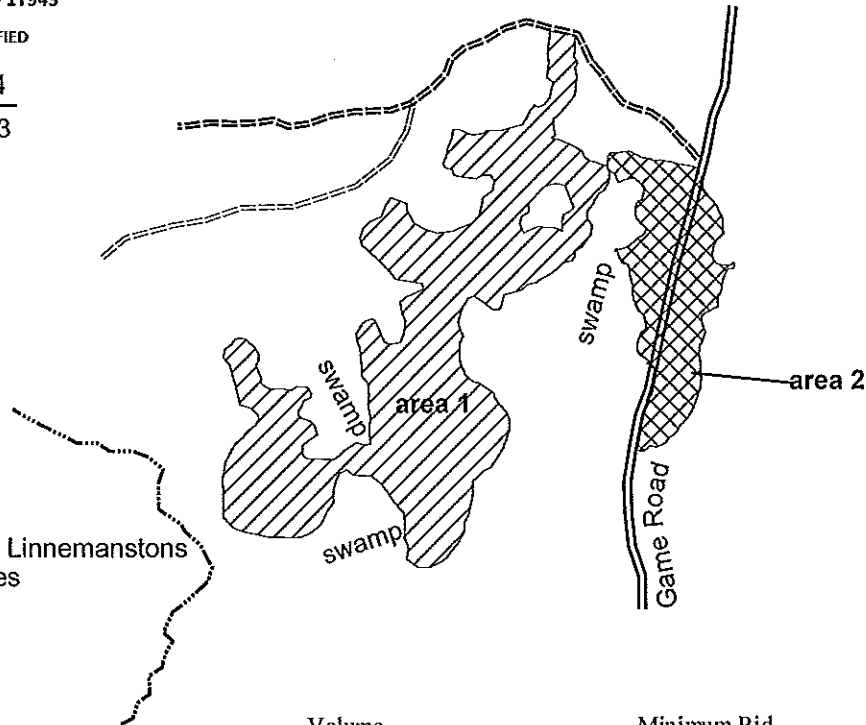
#NSF-SFIS-1Y943

TRACT IS SFI & FSC CERTIFIED

15 | 14  
22 | 23

5.28 inches: mile

Sale Prepared by: Karl Linnemanstons  
Total Sale Area: 51 acres



Species	Volume	Minimum Bid
Mixed Hardwood	325 cords	\$13.00
Aspen	45 cords	\$13.00
Balsam Fir	40 cords	\$10.80
Spruce	95 cords	\$14.40
Mixed Hardwood	6 MBF	\$71.00

## Harvest Specifications Area 1 (41 acres)

Harvest all trees marked with orange paint along with all aspen, balsam fir, and spruce. Utilize pulpwood to a 4 inch top diameter, sawlogs to a minimum 10 inch top diameter. Follow the BMP's and prevent/minimize rutting along with damage to residual trees. Harvest will not take place from April 1<sup>st</sup> through July 1<sup>st</sup>. Sale boundaries is solid red line.

## Harvest Specifications Area 2 (10 acres)

Harvest everything 2 inches dbh and up, except for cedar, hemlock, and pine. Utilize pulpwood to a 4 inch top diameter, sawlogs to a minimum 10 inch top diameter. Follow the BMP's and prevent/minimize rutting along with damage to residual trees. Sale boundaries is two red dots.



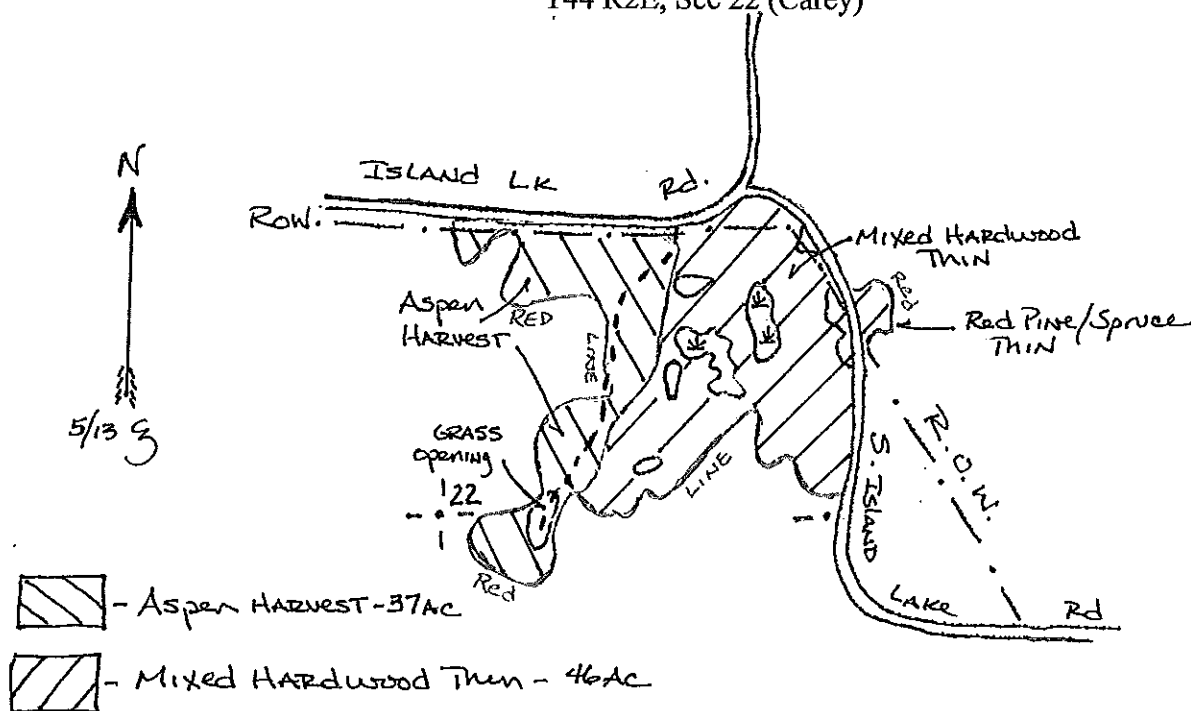
FOREST STEWARDSHIP COUNCIL™  
#SCS-FM/COC-00083G-h  
FSC 100%

## Iron County Forest Timber Sale



SUSTAINABLE FORESTRY INITIATIVE  
NSF-SFIS-1Y943

Timber Sale # \_\_\_\_\_ Tract # 23 - 13  
T44 R2E, Sec 22 (Carey)



Total Sale Area = 83 Acres

Sale prepared by: C. E. Zinsmaster

Scale: 4in = 1 mile

SPECIES	VOLUME	MINIMUM BID
Mixed Hardwood*	2MBF	\$106.00
Red Pine	5 MBF	\$60.00
Aspen	605 Cords	\$15.30
Mixed Hardwood*	515 Cords	\$15.30
Balsam Fir	60 Cords	\$12.80
Basswood	20 Cords	\$6.80

\*Mixed hardwood products include red maple, sugar maple, yellow birch, and ironwood.

**General Harvest Specifications:** Utilize pulp to a 4-inch top diameter and saw logs to a 10-inch top diameter. Follow WI BMP's for Water Quality. If game openings are used for landings, they must be cleared of all logging debris prior to sale closeout.

**Mixed Hardwood:** Harvest all aspen, balsam fir, and ironwood with at least one 100 inch stick. Harvest all trees marked with and orange slash including non-merchantable stems. Avoid damage to established regeneration, especially yellow birch.

**Aspen Clear-cut:** Harvest all aspen, maple, balsam fir, and ironwood with at least one 100 inch stick; except trees marked with green paint.





FOREST STEWARDSHIP COUNCIL™  
#SCS-FM/COC-00083G-h  
FSC 100%

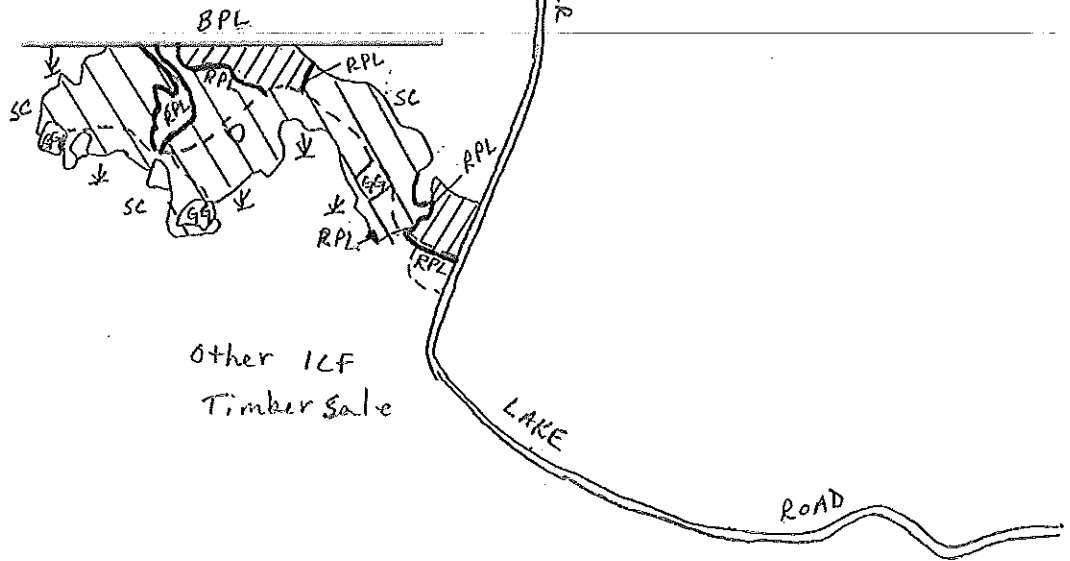
Iron County Forest



SUSTAINABLE FORESTRY INITIATIVE  
NSF-SFIS-1Y943

Timber Sale # \_\_\_\_\_ Tract # 24-13  
Town of Oma T42N R3E Sec 34

28 | 27  
33 | 34



#### LEGEND

RPL = Red Paint Line  
BPL = Blue Paint Line  
SC = Swamp Conifer  
NH = Northern Hardwood  
W = Wetland  
D = Drainage/Intermittent Stream  
+ = Section Corner  
GG = Grass Opening  
Total Sale Area = 45 Acres  
Sale prepared by Kelly Martinko

Scale: 4in = 1 mile

SPECIES	VOLUME	MINIMUM BID
Aspen	900 Cords	17.10
Mixed Hardwood*	150 Cords	17.10
Balsam Fir	20 Cords	14.30
Red Pine*	15 Cords	28.50
Mixed Hardwood*	3 MBF	110.00

**General Harvest Specifications:** Utilize pulp to a 4-inch top diameter and saw logs to a 10-inch top diameter. Follow WI BMP's for Water Quality. If game openings are used for landings, they must be cleared of all logging debris prior to sale closeout.



**Northern Hardwood:** Harvest all aspen, white birch, balsam fir, and ironwood with at least one 100 inch stick. Harvest **all** trees marked with and orange slash including non-merchantable stems. Avoid damage to established regeneration, especially yellow birch. No logging Activity April → June.



**Aspen Clear-cut:** Harvest all aspen, maple, white birch, balsam fir, and ironwood with at least one 100 inch stick, except trees marked with green paint; and harvest all pine and spruce marked with an orange slash.

\*Mixed hardwood products include red maple, sugar maple, white birch, yellow birch, basswood, and ironwood. Red pine includes saw logs (co-mingled product).



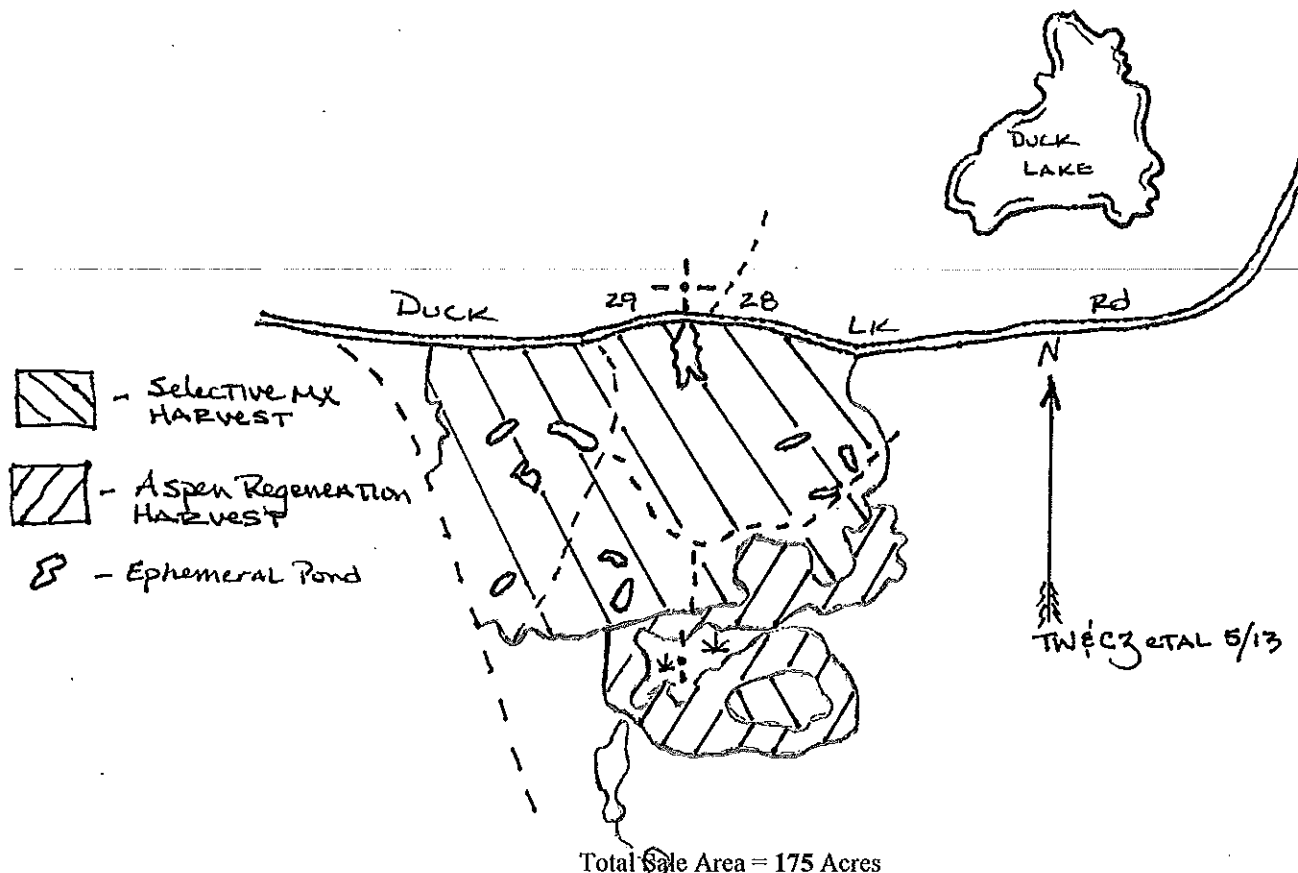
FOREST STEWARDSHIP COUNCIL<sup>TM</sup>  
#SCS-FM/COC-00083G-h  
FSC 100%

## Iron County Forest Timber Sale

Timber Sale # \_\_\_\_\_ Tract # 25 - 13  
T43 R1E, Sec 28 & 29 (Knight)



SUSTAINABLE FORESTRY INITIATIVE  
NSF-SFIS-1Y943



Sale prepared by: Ty Wicklund & C. E. Zinsmaster

Scale: 4in = 1 mile

SPECIES	VOLUME	MINIMUM BID
Sugar Maple	31MBF	\$213.00/MBF
Mixed Hardwood	33 MBF	\$106.00/MBF
Aspen	520 Cords	\$15.30/Cord
Mixed Hardwood*	1400 Cords	\$15.30/Cord
Balsam Fir	50 Cords	\$12.80/Cord
Basswood	100 Cords	\$6.80/Cord
Spruce (Co-Mingled)	50 Cords	\$25.50/Cord

\*Mixed hardwood products include red maple, sugar maple, and ironwood.

**General Harvest Specifications:** Harvest all merchantable Ironwood. Utilize pulp to a 4-inch top diameter and saw logs to a 10-inch top diameter. Follow WI BMP's for Water Quality. Use old roads wherever possible. Protect quality regeneration.

**Mixed Hardwood:** Harvest all aspen, balsam fir, and ironwood with at least one 100 inch stick. Harvest all trees marked with orange paint. Avoid damage to established regeneration, especially yellow birch. Protect elm from damage.

**Aspen Clear-cut:** Harvest all aspen, maple, balsam fir, and ironwood with at least one 100 inch stick.

# Iron County Forest

Timber Sale #\_\_\_\_\_, Tract # 26-13

Town of Knight  
T43NR1E  
Sec. 9

$\frac{4}{9} \frac{3}{10}$



The mark of  
responsible forestry  
www.fsc.org  
FSC® C006050

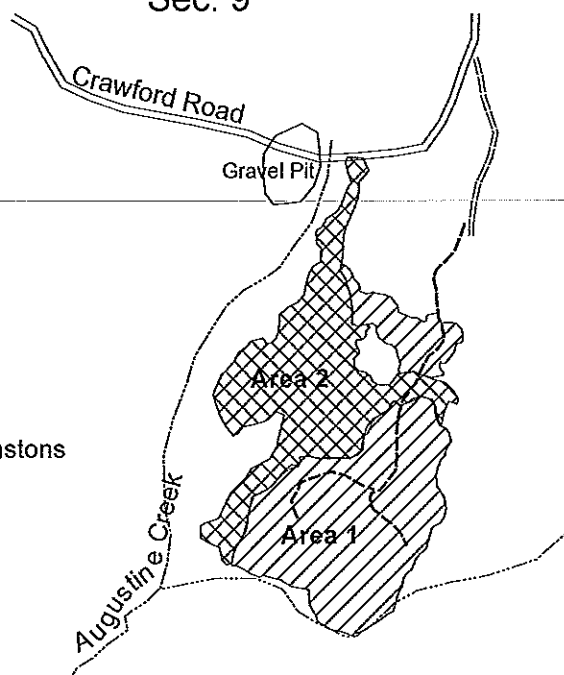


#NSF-SFIS-1Y943

TRACT IS SFI & FSC CERTIFIED

4inches:mile

Sale Prepared By: Karl Linnemanstons  
Total Sale Area: 68acres



Species	Volume	Minimum Bid
Mixed Hardwood	555 cords	\$13.00
Aspen	115 cords	\$13.00
Balsam Fir	40 cords	\$10.80
Spruce	140 cords	\$14.40
Mixed Hardwood (50% Black Cherry)	7 MBF	\$71.00

## Harvest Specifications Area 1 (39 acres)

Harvest all trees marked with orange paint along with all aspen, balsam fir, and spruce. Utilize pulpwood to a 4 inch top diameter, sawlogs to a minimum 10 inch top diameter. Follow the BMP's and prevent/minimize rutting along with damage to residual trees. Harvest will not take place from April 1<sup>st</sup> through July 1<sup>st</sup>. Sale boundaries is solid red line.

## Harvest Specifications Area 2 (29 acres)

Harvest everything 2 inches dbh and up, except for cedar, hemlock, and pine. Utilize pulpwood to a 4 inch top diameter, sawlogs to a minimum 10 inch top diameter. Follow the BMP's and prevent/minimize rutting along with damage to residual trees. Sale boundaries is two red dots.



FOREST STEWARDSHIP COUNCIL<sup>®</sup>  
#SCS-FM/COC-00083G-h  
FSC 100%

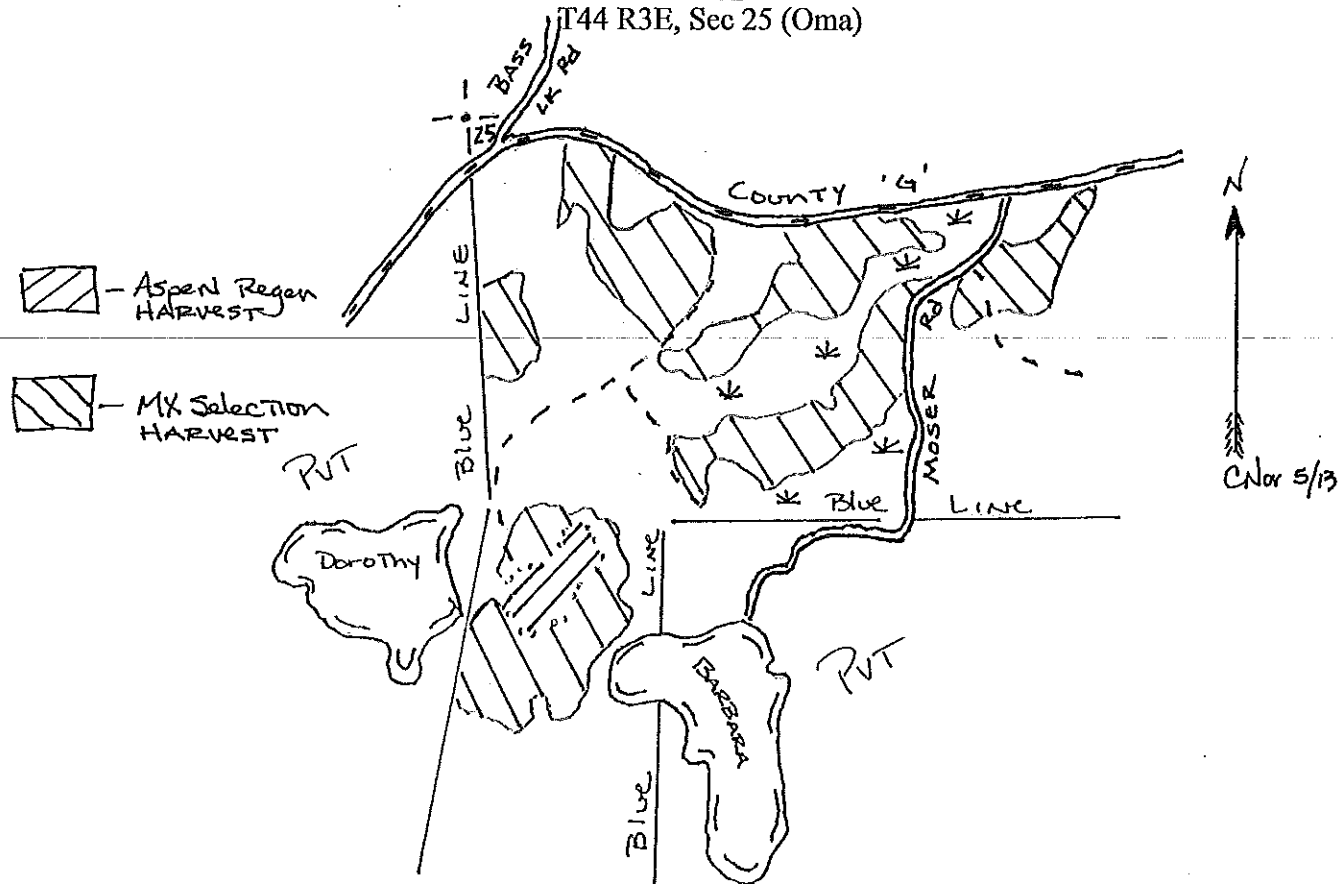
## Iron County Forest Timber Sale



SUSTAINABLE FORESTRY INITIATIVE  
NSF-SFIS-1Y943

Timber Sale # \_\_\_\_\_ Tract # 28 - 13

T44 R3E, Sec 25 (Oma)



Total Sale Area = 85 Acres

Sale prepared by: Chuck Norgren

Scale: 4in = 1 mile

SPECIES	VOLUME	MINIMUM BID
Sugar Maple	7MBF	\$213.00/MBF
Mixed Hardwood	7 MBF	\$106.00/MBF
Basswood	15MBF	\$106.00/MBF
Mixed Hardwood*	547 Cords	\$15.30/Cord
Balsam Fir	50 Cords	\$12.80/Cord
Basswood	50 Cords	\$6.80/Cord
Aspen	182 Cords	\$15.30/Cord

\*Mixed hardwood products include 45% red maple, 45% sugar maple, and ironwood.

**General Harvest Specifications:** Harvest all merchantable Ironwood. Utilize pulp to a 4-inch top diameter and saw logs to a 10-inch top diameter. Follow WI BMP's for Water Quality. Use old roads wherever possible. Protect quality regeneration.

**Mixed Hardwood:** Harvest all aspen, balsam fir, and ironwood with at least one 100 inch stick. Harvest all trees marked with orange paint. Avoid damage to established regeneration, especially yellow birch.

**Aspen Clear-cut:** Harvest all aspen, maple, balsam fir, and ironwood with at least one 100 inch stick.

# Iron County Forest

Timber Sale #\_\_\_\_\_, Tract # 29-13



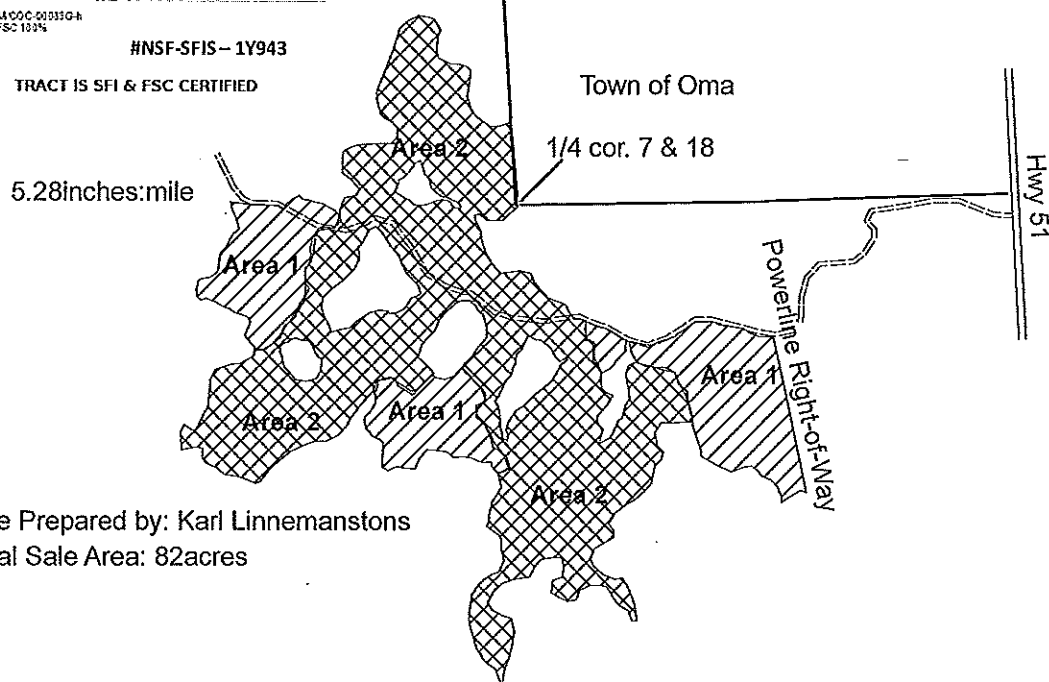
#SC3-FMCC-C-0035G-h  
FSC 103%



#NSF-SFIS-1Y943

TRACT IS SFI & FSC CERTIFIED

Town of Oma  
T44NR3E  
Sec.7&18



Sale Prepared by: Karl Linnemanstons  
Total Sale Area: 82 acres

Species	Volume	Minimum Bid
Mixed Hardwood	620 cords	\$17.60
Aspen	245 cords	\$17.60
Balsam Fir	175 cords	\$14.70
Spruce	210 cords	\$19.60
Mixed Hardwood	7 MBF	\$71.00

## Harvest Specifications Area 1 (23 acres)

Harvest all trees marked with orange paint along with all aspen, balsam fir, and spruce. Utilize pulpwood to a 4 inch top diameter, sawlogs to a minimum 10 inch top diameter. Follow the BMP's and prevent/minimize rutting along with damage to residual trees. Harvest will not take place from April 1<sup>st</sup> through July 1<sup>st</sup>. Sale boundaries is solid red line, woods road, and powerline right-of-way.

## Harvest Specifications Area 2 (59 acres)

Harvest everything 2 inches dbh and up, except for cedar, hemlock, and pine. Utilize pulpwood to a 4 inch top diameter, sawlogs to a minimum 10 inch top diameter. Follow the BMP's and prevent/minimize rutting along with damage to residual trees. Sale boundaries is two red dots and blue line.

# Iron County Forest

Timber Sale # \_\_\_\_\_, Tract # 30-13



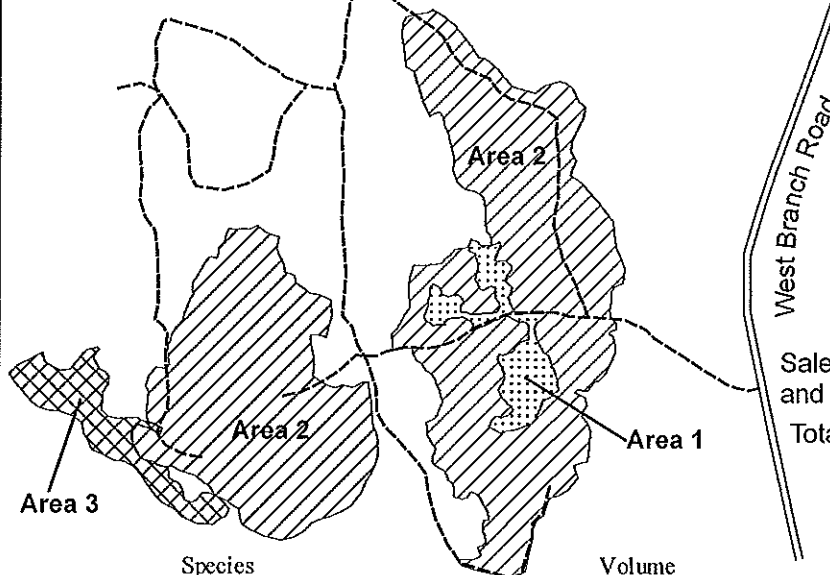
#NSF-SFIS - 1Y943

TRACT IS SFI & FSC CERTIFIED

19 20  
30 29

Town of Pence  
T45NR2E  
Sec. 30&31

4 inches:mile



Sale Prepared by: Karl Linnemanstons  
and ML Forestry  
Total Sale Area: 141 acres

Species	Volume	Minimum Bid
Mixed Hardwood	1100 cords	\$15.70
Aspen	65 cords	\$15.70
Balsam Fir	30 cords	\$13.10
Spruce	75 cords	\$17.40
Basswood	20 cords	\$7.00
Sugar Maple	15MBF	\$115.00
Mixed Hardwood	22MBF	\$115.00

## Harvest Specifications Area 1 (8 acres)

Harvest everything greater than 5 inches dbh. Leave all cedar, hemlock, and pine. Utilize pulpwood to a 4 inch top diameter, sawlogs to a minimum 10 inch top diameter. Follow the BMP's and prevent/minimize rutting along with damage to residual trees. Sale boundaries is two red dots.

## Harvest Specifications Area 2 (123 acres)

Harvest all trees marked with orange paint along with all aspen, balsam fir, and spruce. Utilize pulpwood to a 4 inch top diameter, sawlogs to a minimum 10 inch top diameter. Follow the BMP's and prevent/minimize rutting along with damage to residual trees.. Sale boundaries is solid red line.

## Harvest Specifications Area 3 (10 acres)

Harvest everything 2 inches dbh and up, except for cedar, hemlock, and pine. Utilize pulpwood to a 4 inch top diameter, sawlogs to a minimum 10 inch top diameter. Follow the BMP's and prevent/minimize rutting along with damage to residual trees. Sale boundaries is two red dots.

\*Harvest will only take place from December 1<sup>st</sup> through April 1<sup>st</sup>

# IRON COUNTY FOREST TIMBER SALE # \_\_\_\_\_,

## TRACT# 31-13

T47N, R1W, Section 19, 20 (Gurney)

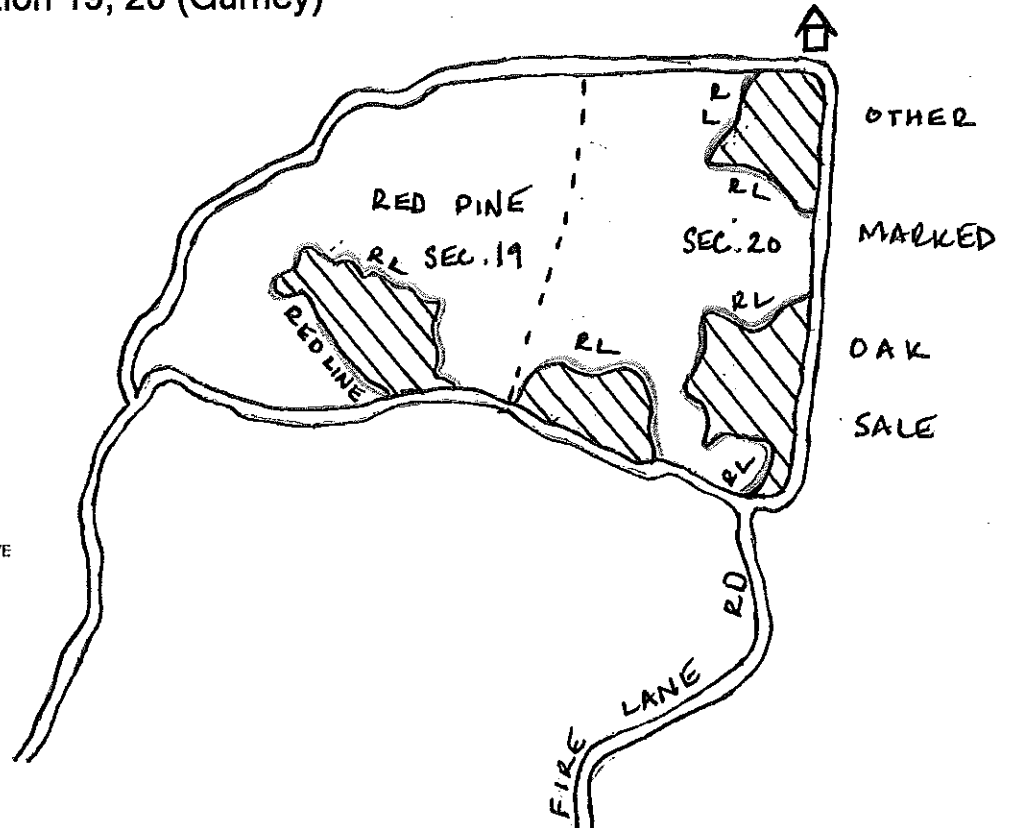
TRACT IS SFI & FSC CERTIFIED



The mark of  
responsible forestry  
#SCS-FM/COC-0083G-h  
FSC 100%



SUSTAINABLE FORESTRY INITIATIVE  
NSF-SFIS-1Y943



This sale area is approximately 23 acres, and is the cross-hatched area on the map.

Sale Prepared by: Tyler Wicklund

Scale: 1 inch = 1/4 mile

<u>Log Products:</u>	<u>Estimated Volume</u>	<u>Minimum Bid</u>
Red Oak	2 MBF	\$ 250.00
<u>Cordwood:</u>		
Red Oak	160 Cords	\$ 10.00
Mixed Hardwoods	20 Cords	\$ 18.00
Aspen	5 Cords	\$ 18.00

### Harvest Specifications:

Harvest all orange marked trees, and all aspen containing at least one 100 inch pulpstick to a 4" minimum top diameter, and sawlogs to a 10" top diameter. Care should be taken during the harvesting operation to minimize residual damage to remaining stand. Follow all BMP's to prevent and minimize rutting. Sale area shall be kept free of litter at all times. All slash will remain in harvested area. **NO SEASONAL RESTRICTIONS.**

# Iron County Forest

Timber Sale # \_\_\_\_\_, Tract #32-13

15, 14  
22, 23



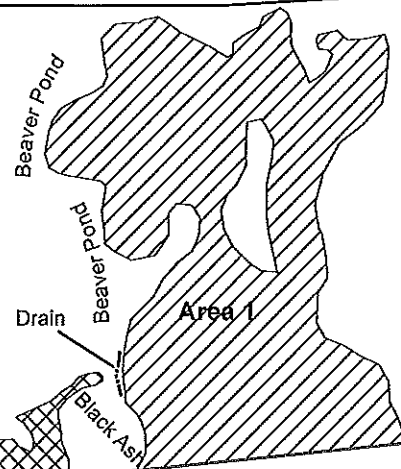
The mark of  
responsible forestry  
FSC® C008090 A  
FSC 127%



#NSF-SFIS- 1Y943

TRACT IS SFI & FSC CERTIFIED

Town of Oma  
T44NR3E  
Sec. 22&23

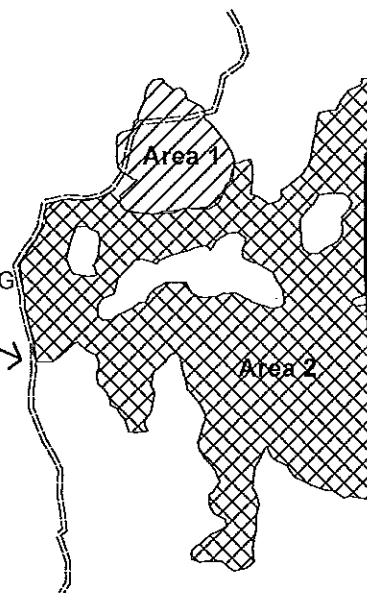


State of Wisconsin

5.28 inches:mile

Sale Prepared by: Karl Linnemanstons  
Total Sale area: 123 acres

Approx. 1 mile south to County G



Species	Volume	Minimum Bid
Mixed Hardwood	1300 cords	\$15.70
Aspen	500 cords	\$15.70
Balsam Fir	120 cords	\$13.10
Spruce	90 cords	\$17.40
Basswood	30 cords	\$7.00
Sugar Maple	4 MBF	\$143.00
Mixed Hardwood	31 MBF	\$71.00

## Harvest Specifications Area 1 (68 acres)

Harvest all trees marked with orange paint along with all aspen, balsam fir, and spruce. Utilize pulpwood to a 4 inch top diameter, sawlogs to a minimum 10 inch top diameter. Follow the BMP's and prevent/minimize rutting along with damage to residual trees. Harvest will not take place from April 1<sup>st</sup> through July 1<sup>st</sup>. Sale boundaries is solid red line and blue line.

## Harvest Specifications Area 2 (55 acres)

Harvest everything 2 inches dbh and up, except for cedar, hemlock, and pine. Utilize pulpwood to a 4 inch top diameter, sawlogs to a minimum 10 inch top diameter. Follow the BMP's and prevent/minimize rutting along with damage to residual trees. Sale boundaries is two red dots and blue line.



# Iron County Forest

Timber Sale # \_\_\_\_\_, Tract # 33-13  
Town of Pence  
T44NR2E  
Sec.8

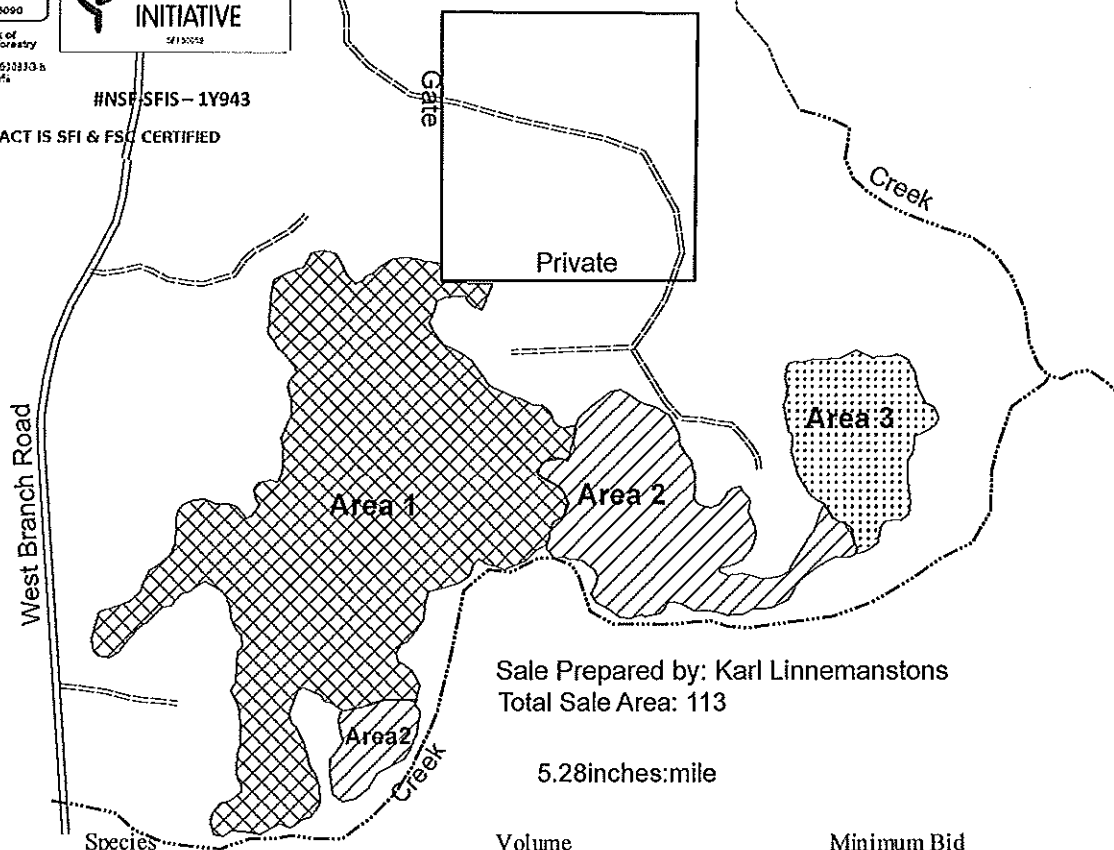


The mark of  
responsible forestry  
FSC® C006090  
FSC® C006090  
FSC® C006090



#NSF SFIS - 1Y943

TRACT IS SFI & FSC CERTIFIED



Sale Prepared by: Karl Linnemanstons  
Total Sale Area: 113

5.28 inches: mile

Species	Volume	Minimum Bid
Mixed Hardwood	970 cords	\$11.30
Aspen	10 cords	\$11.30
Balsam Fir	60 cords	\$9.50
Spruce	220 cords	\$12.60
Mixed Hardwood	30 MBF	\$71.00

## Harvest Specifications Area 1 (74 acres)

Harvest all trees marked with orange paint along with all aspen, balsam fir, and spruce. Utilize pulpwood to a 4 inch top diameter, sawlogs to a minimum 10 inch top diameter. Follow the BMP's and prevent/minimize rutting along with damage to residual trees. Harvest will not take place from April 1<sup>st</sup> through July 1<sup>st</sup>. Sale boundaries is solid red line and blue lines. Any marked trees that are not cut down need to be girdled (2 horizontal cuts with the chainsaw about 4 inches apart and 2 inches deep around the entire tree).

## Harvest Specifications Area 2 (26 acres)

Harvest everything 2 inches dbh and up, except for cedar, hemlock, and pine. Utilize pulpwood to a 4 inch top diameter, sawlogs to a minimum 10 inch top diameter. Follow the BMP's and prevent/minimize rutting along with damage to residual trees. Sale boundaries is two red dots. At least 50% of the ground needs to be scarified.

## Harvest Specifications Area 3 (13 acres)

Harvest all balsam fir, spruce, aspen, and all hardwood trees greater than 10 inches dbh. Utilize pulpwood to a 4 inch top diameter, sawlogs to a minimum 10 inch top diameter. Follow the BMP's and prevent/minimize rutting along with damage to residual trees. Sale boundaries solid red line.

\*There are areas of this sale that are winter only.

# IRON COUNTY FOREST TIMBER SALE # \_\_\_\_\_

TRACT# 34-13

T43N, R1E. Section 16, 17, 20, 21 (Knight)

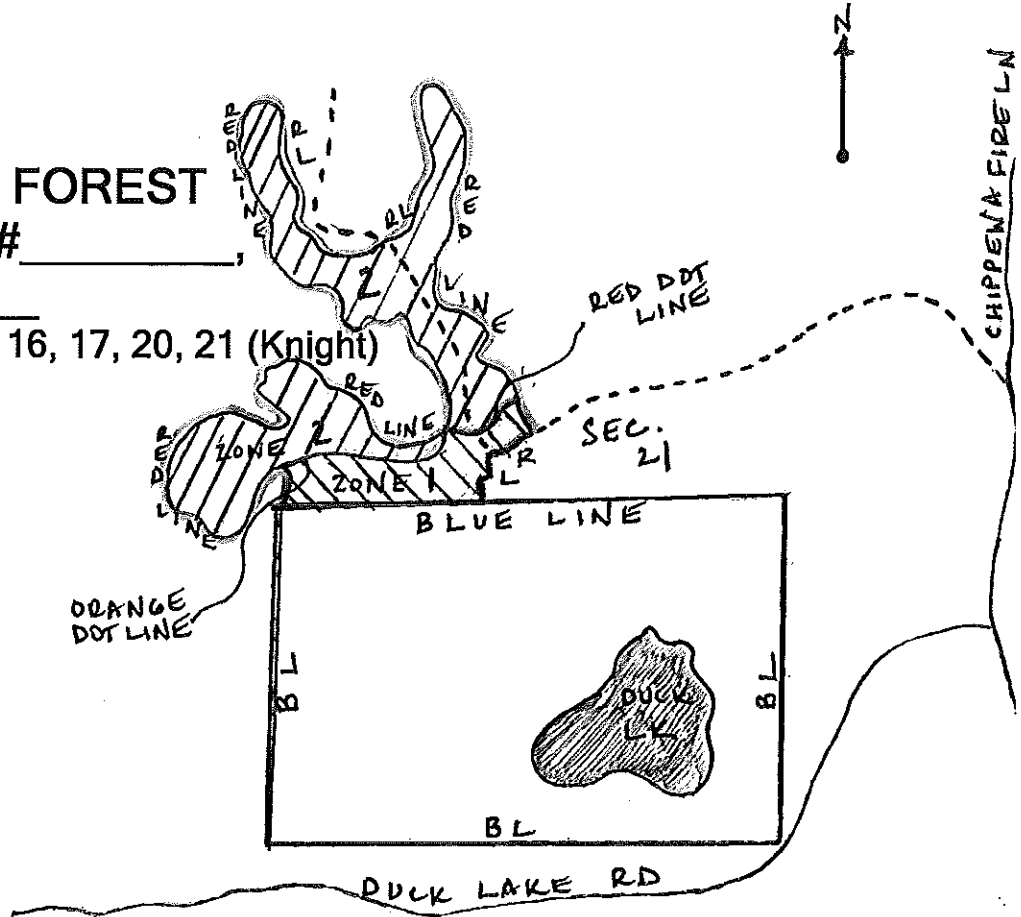
TRACT IS SFI & FSC CERTIFIED



The mark of  
responsible forestry  
#SCS-FM/COC-0083G-h  
FSC 100%



SUSTAINABLE FORESTRY INITIATIVE  
NSF-SFIS-1Y943



This sale area is approximately 77 acres, and is the cross-hatched area on the map.

Scale: 1 inch = 1/4 mile

Sale Prepared by: Tyler Wicklund

## Log Products:

Basswood  
Hard Maple  
Mixed Hardwoods

## Estimated Volume

4 MBF  
2 MBF  
1 MBF

## Minimum Bid

\$ 109.00  
\$ 218.00  
\$ 109.00

## Cordwood:

Aspen  
Mixed Hardwoods  
White Spruce  
Balsam Fir  
Basswood

1100 Cords  
350 Cords  
125 Cords  
100 Cords  
75 Cords

\$14.80  
\$ 14.80  
\$ 16.40  
\$ 12.30  
\$ 6.60

## Harvest Specifications:

**Zone 1:** Harvest all orange marked trees, all aspen, fir and spruce containing at least one 100 inch pulpstick to a 4" minimum top diameter, and sawlogs to a 10" top diameter. Care should be taken during the harvesting operation to minimize residual damage to remaining stand.

**Zone 2:** Cut all aspen, mixed hardwoods, spruce, and fir. Cut all other hardwood stems 2 inches and larger. Do not cut oak, and black ash. Follow all BMP's in both zones to prevent and minimize rutting. Sale area shall be kept free of litter at all times. All slash will remain in harvested area. Care should be taken during harvesting to minimize any detrimental effects to the soils.

# Iron County Forest

Timber Sale #\_\_\_\_\_, Tract # 35-13



The mark of  
responsible forestry  
FSC® C006090  
FSCS-FMXCC-000310-h  
FSC 100%



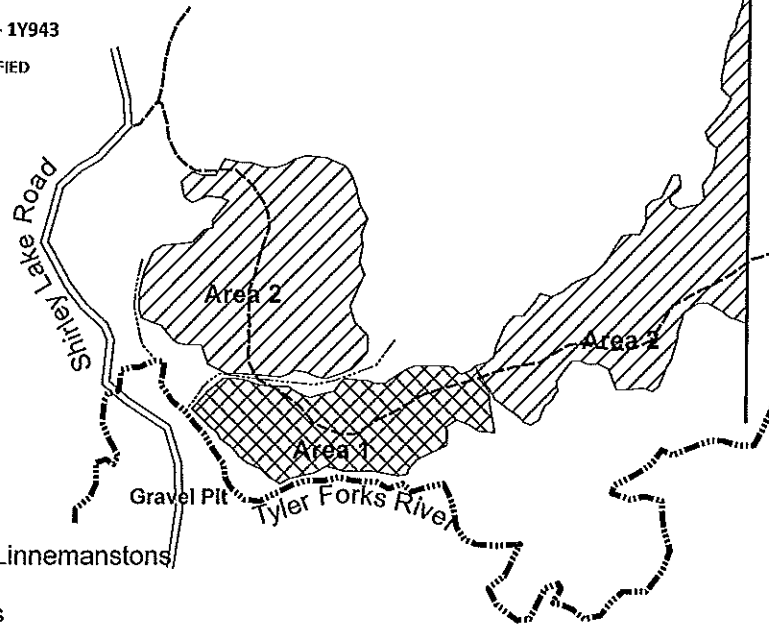
#NSF-SFIS - 1Y943

TRACT IS SFI & FSC CERTIFIED

Town of Anderson  
T44NR1W  
Sec. 13

12 7  
13 18

5.28 inches:mile



Sale Prepared by: Karl Linnemanstons  
& ML Forestry  
Total Sale Area: 61 acres

Species	Volume	Minimum Bid
Mixed Hardwood	470 cords	\$11.30
Aspen	30 cords	\$11.30
Balsam Fir	85 cords	\$9.50
Spruce	40 cords	\$12.60
Sugar Maple	3 MBF	\$143.00
Mixed Hardwood	2 MBF	\$71.00

## Harvest Specifications Area 1 (14 acres)

Harvest everything greater than 5 inches dbh. Leave all cedar, hemlock, and pine. Utilize pulpwood to a 4 inch top diameter, sawlogs to a minimum 10 inch top diameter. Care needs to be taken to do the least amount of damage to existing hardwood regeneration. Follow the BMP's and prevent/minimize rutting along with damage to residual trees. Sale boundaries is two red dots.

## Harvest Specifications Area 2 (47 acres)

Harvest all trees marked with orange paint along with all aspen, balsam fir, and spruce. Utilize pulpwood to a 4 inch top diameter, sawlogs to a minimum 10 inch top diameter. Follow the BMP's and prevent/minimize rutting along with damage to residual trees. Harvest will not take place from April 1<sup>st</sup> through July 1<sup>st</sup>. Sale boundaries is solid red line and blue line.

# Iron County Forest

Timber Sale #\_\_\_\_\_, Tract # 36-13

Section 5/6/7-T46N-R1W



The mark of  
responsible forestry  
#SCS-FIM-COC-00010-4  
FSC 100%



SUSTAINABLE  
FORESTRY  
INITIATIVE

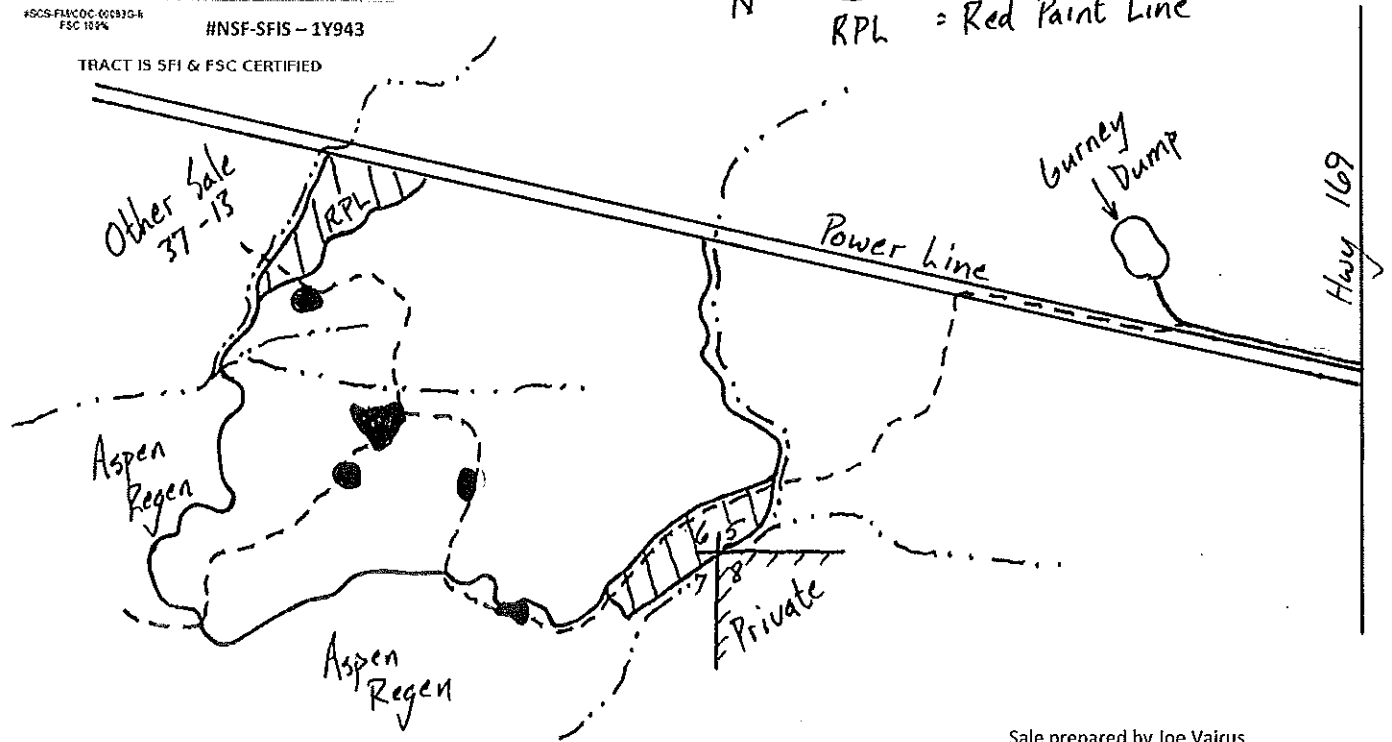
#NSF-SFIS - 1Y943

TRACT IS SFI & FSC CERTIFIED

Gurney

N

- - - - = Creek
- - - - = Woods Road
- ||| = Clear Cut Area
- = Game Opening
- RPL = Red Paint Line



Sale prepared by Joe Vairus

Total sale area is 272 acres.

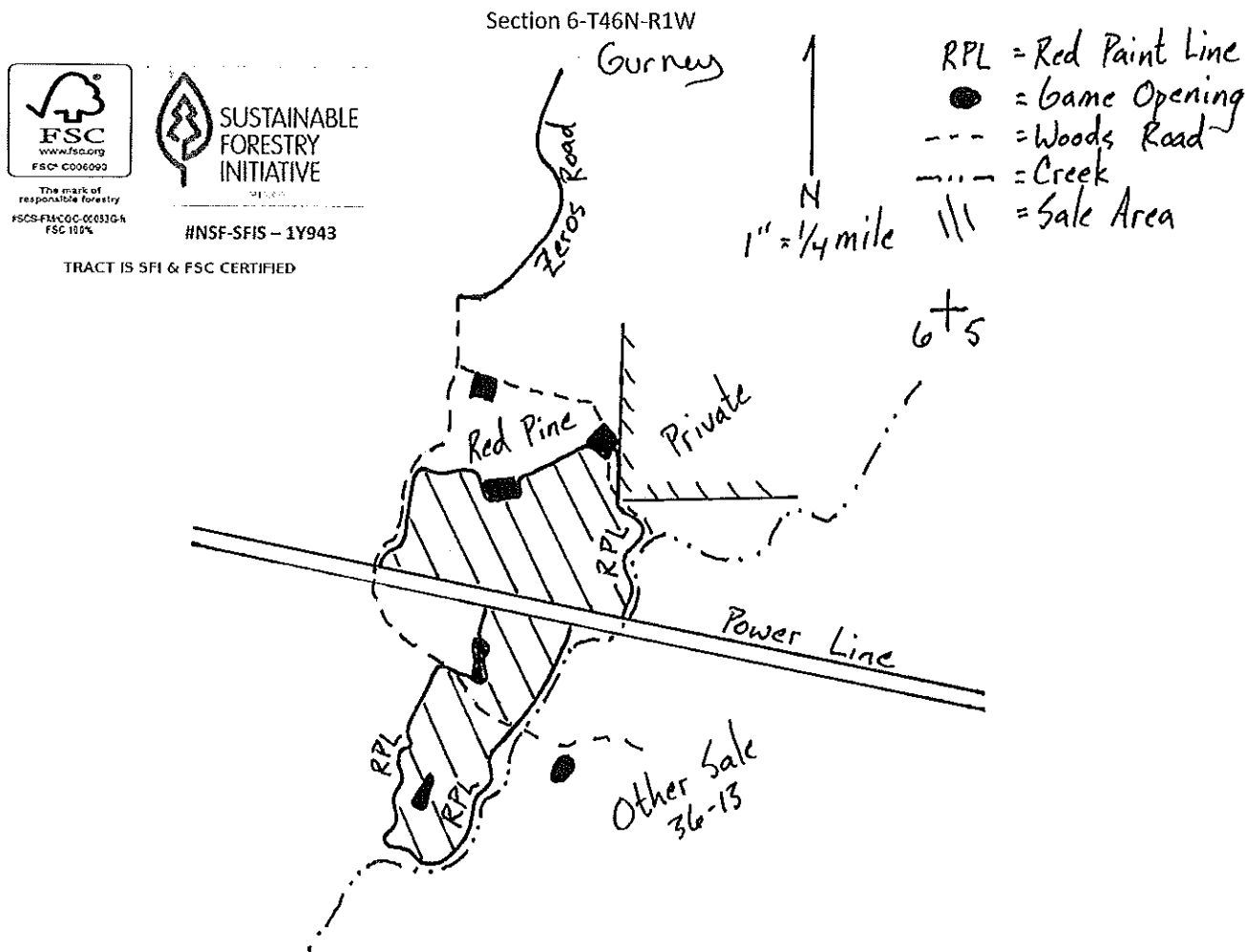
SPECIES	VOLUME	MINIMUM BID
Hard Maple	18 MBF	\$250/MBF
Mixed Hardwood	39 MBF	\$125/MBF
Basswood	54 MBF	\$125/cord MBF
Mixed Hardwood	1478 cords	\$18/cord
Basswood	544 cords	\$5/cord
Aspen	727 cords	\$18/cord
Balsam	40 cords	\$15/cord
Spruce	25 cords	\$20/cord

**Harvest Specifications select cut area:** Harvest all trees marked with orange paint and balsam fir and spruce. Harvest older age class of aspen (generally greater than 8" dbh). Utilize pulpwood to a 4" minimum top and saw logs to a 10" minimum top. No logging during April, May, or June. Follow Wisconsin BMPs at all times and eliminate rutting.

**Harvest specifications clear cut areas:** Harvest all trees except pine, elm, and oak. Leave quality hardwood stems (about 60 square feet of basal area) on steep slopes and within RMZs. Utilize pulpwood to a 4" minimum top and saw logs to 10" minimum top.

# Iron County Forest

Timber Sale #\_\_\_\_\_, Tract # 37-13



Sale prepared by Joe Vairus and Mike Lane

Total sale area is 74 acres.

SPECIES	VOLUME	MINIMUM BID
Hard Maple	7 MBF	\$250/MBF
Mixed Hardwood	5 MBF	\$125/MBF
Mixed Hardwood	560 cords	\$18/cord
Aspen	350 cords	\$18/cord
Spruce	15 cords	\$20/cord

**Harvest Specifications:** Harvest all trees marked with orange paint and all aspen and spruce. Utilize pulpwood to a 4" minimum top and saw logs to a 10" minimum top. No logging during April, May, or June. Follow Wisconsin BMPs at all times and eliminate rutting.

# Iron County Forest

Timber Sale # \_\_\_\_\_, Tract # 38-13



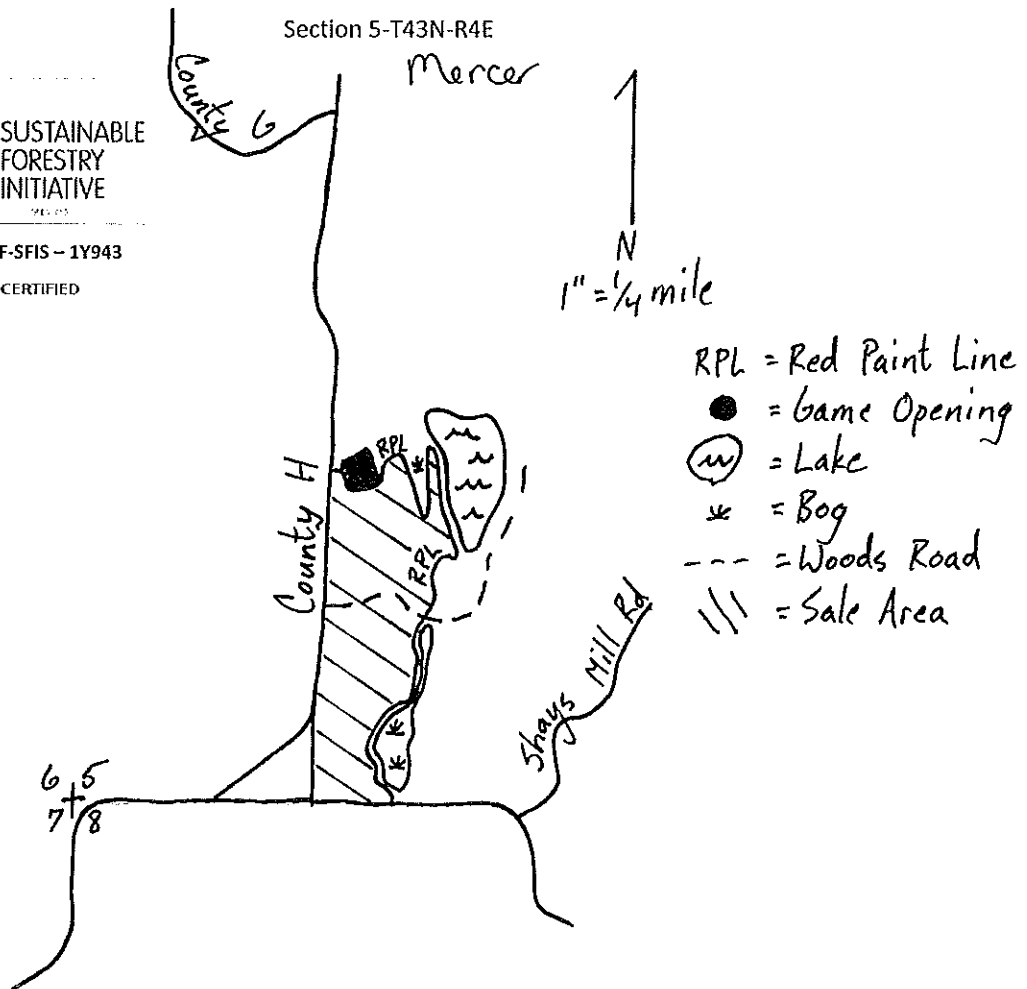
The mark of  
responsible forestry  
#SCS-FM-COC-00183-GA  
FSC 100%



SUSTAINABLE  
FORESTRY  
INITIATIVE

#NSF-SFIS - 1Y943

TRACT IS SFI & FSC CERTIFIED



Sale prepared by Joe Vairus

Total sale area is 38 acres.

SPECIES	VOLUME	MINIMUM BID
White Pine	300 cords	\$10/cord
Mixed Hardwood*	60 cords	\$14.04/cord
Balsam	11 cords	\$15/cord
Spruce	11 cords	\$20/cord

\*Mostly aspen with some white birch and maple

**Harvest Specifications:** Harvest all trees marked with orange paint. Utilize pulpwood to a 4" minimum top. Follow Wisconsin BMPs at all times and eliminate rutting.

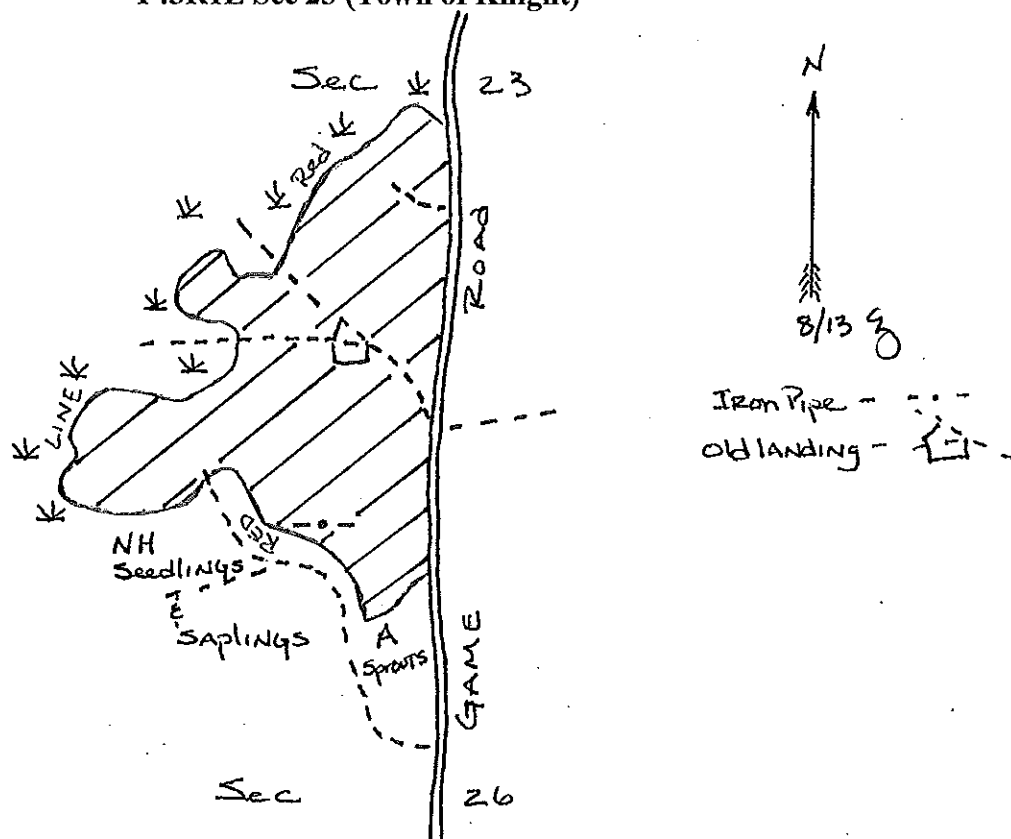


#scs-FM/CO-0083G-h FSC-100%



#NSP-SFIS-1V943

**Iron County Forest Timber Sale # \_\_\_\_\_ Tract # 39-13**  
**T43R1E Sec 23 (Town of Knight)**



**Harvest Specifications:** Harvest all trees marked with orange paint. Harvest all merchantable Ironwood and Balsam. Utilize Sawlogs to a 10 inch minimum top diameter, pulpwood to a 4 inch minimum top diameter. Protect all residual stems from logging damage (including quality advanced regeneration). Follow all BMPs for water quality. Prevent rutting. No logging activity from April to July without permission from Forest Administrator.

Sale Area: 102 acres. Scale: 4 inches = ~ 1 Mile.

C.E. Zinsmaster

SPECIES	Estimated VOLUME	MINIMUM BID
Hard Maple	10 MBF	\$2/3 MBF
Mixed Hardwood*	25 MBF	\$10/MBF
Mixed Hardwood	800 cords	\$15.30/cord
Basswood	80 cords	\$6.80/cord
Aspen	40 cords	\$15.30/cord
Spruce (Co-Mingled)	10 cords	\$25.50/cord eq.
Fir	25 cords	\$12.80/cord

# Iron County Forest

Timber Sale # \_\_\_\_\_, Tract # 40-13

Town of Knight  
T43NR1E  
Sec. 24



The mark of  
responsible forestry  
www.fsc.org  
FSC® C006090



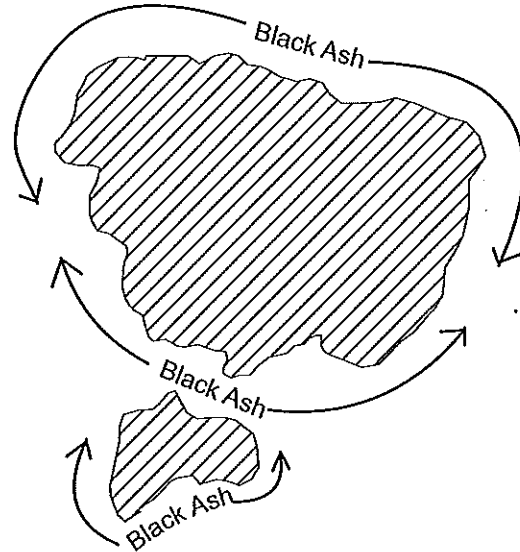
#NSF-SFIS - 1Y943

TRACT IS SFI & FSC CERTIFIED

5.28 inches: mile

Game Road

Approx. 1.7 miles to  
Chippewa Fire Lane



23|24  
26|25

Sale Prepared by: Karl Linnemanstons  
Total Sale area: 68 acres

Species	Volume	Minimum Bid
Mixed Hardwood(50% yellow birch)	675 cords	\$13.00
Aspen	10 cords	\$13.00
Balsam Fir	10 cords	\$10.80
Spruce	85 cords	\$14.40
Sugar Maple	1MBF	\$143.00
Mixed Hardwood(80% yellow birch)	18MBF	\$71.00

## Harvest Specifications

Harvest all trees marked with orange paint along with all aspen, balsam fir, and spruce. Utilize pulpwood to a 4 inch top diameter, sawlogs to a minimum 10 inch top diameter. Follow the BMP's and prevent/minimize rutting along with damage to residual trees. Harvest will not take place from April 1<sup>st</sup> through ~~July 1<sup>st</sup>~~ June 30. Sale boundaries is solid red line.



# Iron County Forest

Timber Sale #\_\_\_\_\_, Tract # 41-13



The mark of  
responsible forestry  
FSC® C006093  
FSC® S-FM/COC-00310 &  
FSC 100%



#NSF-SFIS-1Y943

TRACT IS SFI & FSC CERTIFIED

Town of Oma  
T44NR3E  
Sec. 28

21,22  
28 27

Nasi Camp Road

5.28 inches:mile

Little Pine Road

County G

Private

ROW

Sale Prepared By: Karl Linnemanstons  
Total Sale area: 38 acres

Species	Volume	Minimum Bid
Mixed Hardwood	210 cords	\$13.00
Aspen	165 cords	\$13.00
Balsam Fir	70 cords	\$10.80
Spruce	75 cords	\$14.40
Mixed Hardwood	2MBF	\$71.00

## Harvest Specifications

Harvest everything 2 inches dbh and up, except for cedar, hemlock, and pine. Utilize pulpwood to a 4 inch top diameter, sawlogs to a minimum 10 inch top diameter. Follow the BMP's and prevent/minimize rutting along with damage to residual trees. Sale boundaries is two red dots.