



Great Plains Child Care Resource & Referral January Newsletter



We are excited to congratulate Lindsay Insomya on being named the new Oklahoma Child Care Resource and Referral State Director. Lindsay brings a deep understanding of the CCR&R system, having worked closely with regions across the state throughout her career. Her experience, collaborative leadership style, and commitment to supporting child care providers make her a perfect fit for this role. We look forward

REGIONAL RECONNECT



SOUTHWEST PROVIDERS ONLY
FEBRUARY 28TH, 2026

9:00-1:00PM

@USAO BALLROOM

ONLY ONE PERSON PER FACILITY

[HTTPS://FORM.JOTFORM.COM/260045747145153](https://form.jotform.com/260045747145153)

Click [HERE](#) to Register

PROVIDER UPDATE

We update our information to keep it accurate twice a year.

Please take a moment to answer a few short questions so we can better serve you and ensure our records are up-to-date.

Thank you for helping us continue to support and advocate for quality early childhood in our region!

CLICK BELOW TO UPDATE

Provider Update

to the continued growth and strong partnerships ahead under her leadership.

OKDHS NEWS

Child Passenger Safety Training

What you need to know

- Courses will be virtual via Microsoft Teams or In Person in the OKC metro area.
- There is required pre-work for the course: after the one-hour online presentation, save certificate
- Required for Virtual Training: car seat, video-capable device, class participation.

Upcoming Training Dates

- February 20, 2026 - virtual
- March 21, 2021- in person
- April 24, 2026 - virtual
- May 30, 2026 - virtual
- June 19, 2026 - in person

Child Passenger Safety Training Registration

**In registration search for: Safe Kids/DHS Passenger Safety Class
Make sure to look for the “DHS Approved Child Passenger Safety Training” badge on the course.**

You may also call Safe Kids Oklahoma at (405)789-6711 ext. 1929

About a week before class, you will receive an email with all the information you need to know about the course including the location address for in-person training or Teams link for virtual. This is why it is important to use your individual email address.

Please note that this is not required training for Family Child Care Homes.

This training is offered by Safe Kids Oklahoma in partnership with Oklahoma DHS Child Care Services. For information on class content, visit

www.safekidsok.org or call Safe Kids Oklahoma at (405)789-6711 ext. 1929. Cost: \$15 (must be paid at time of registration and is not refundable.



Enroll Your Program in the Oklahoma Strong Start Program:

To ensure your employees can access this new benefit, we need your help in enrolling your child care program as a participating provider.

To qualify, your program must:

- Be currently licensed by OKDHS as a child care facility
- Have an active subsidy contract with the State of Oklahoma
-

Submit an application using the button below, and be approved based on established policies

Apply Today!!!

We know the early childhood field has faced incredible pressure in recent years. This program is one way we are working to ensure that those who care for Oklahoma's youngest children can access the care and support they need for their own families — helping you keep your staff, serve your community, and stay in the profession you love.

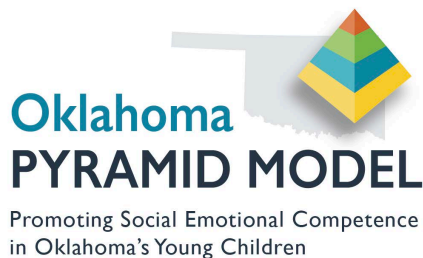
OBI Mobile Fingerprinting in Jackson County

The Oklahoma Background Investigations Office Mobile Fingerprinting Team will be in **Jackson County on Tuesdays from 9:00 a.m. to 3:00 p.m.** on the following dates:

- **January 27, 2026**
- **February 24, 2026**
- **March 24, 2026**

This limited time event will serve customers who require fingerprinting for OKDHS purposes in Jackson, Harmon, Greer, Tillman, and Kiowa counties. Please plan accordingly if you need fingerprinting services on these dates.

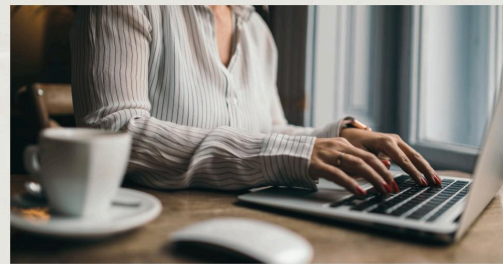
Jackson County - Fingerprint Instructions



Find out more Information about Oklahoma's Implementation of the Pyramid Model by clicking above

Oklahoma State Regents for Higher Education Scholars Program

The Scholars program awards scholarships to eligible child care professionals to complete coursework in the area of child development or early childhood



OKLA STRONG START HRS.

CHILD CARE PROVIDERS

OPSR IS ASSISTING IN THE OKLAHOMA STRONG START PROCESS.

Do you have various request forms you need help with or questions in general?

Office hours will be every Tuesday through February 24th, 12pm-1pm via Zoom.

NO RSVP required & pop in when you'd like.

[HTTPS://US02WEB.ZOOM.US/J/81746406189](https://us02web.zoom.us/j/81746406189)
PWD=BYVEW16ATDIXOTYLQAEQVNGECXRP.1



SUPPORT FOR CHILDREN WITH AUTISM

This is a **FREE** virtual family-focused learning session for parents/caregivers of children showing signs of autism or with a diagnosis of autism.

| Tuesday February 17, 2026 6-7pm CST | Led by: Duane Howell Parent & Certified Autism Specialist | Tuesday May 19, 2026 6-7pm CST |
|---|---|--------------------------------------|
|---|---|--------------------------------------|

Register Here:



education, as well as the Child Development Associate (CDA) and Certified Childcare Professional (CCP) Credential Assessment. These scholarships enable child care providers in Oklahoma to improve their skills through education, receive an educational stipend.

More Information about Scholars

Did you know you qualify for FREE Telehealth and Teletherapy just for being a Child Care Professional?

Recently, our state agency, OPSR has launched FREE access to Telehealth and teletherapy benefits to ALL child providers, their employees, and their dependents through Shared Services.

If you are a Family Child Care Home please contact Athena Jarvis and she can help you through the process. AJarvis@gpccrr.org

This is an incredible opportunity and easy to sign up. Have staff and families that would like to sign up follow the link below.

The enrollment link for child care staff to complete: <https://www.surveymonkey.com/r/JK7K39V>.

For any questions or additional information needed, please utilize telehealth@okschoollreadiness.org.

You are welcome to reach out to CCRR staff and we will try to direct you as well.



VIRTUAL PARENT/CAREGIVER CLASSES

AFO's virtual Parent/Caregivers classes are offered to equip parents of children with disabilities with vital knowledge on early identification, obtaining a diagnosis, navigating the IEP process, and advocating effectively through all stages of life.



- Birth – 4 years old.....Jan 27
- Kindergarten – 5th Grade.....Feb 24
- 6th Grade – 12th Grade.....Mar 24
- Transition & Adulthood.....Mar 31

- 🕒 6:30 PM on Zoom
- ☎ 405-237-8390
- 🌐 www.autismfoundationok.org/events
- ✉ dhowell@autismfoundationok.org

Register Now



Register [HERE](#)



WHY JOIN THE THRIVE NETWORK?

The Thrive Network provides free resources, professional development and peer connection for Oklahoma home child care providers and prospective providers. While you take care of working Oklahomans' families, we take care of you, supplying the support and guidance you need to be successful.

BENEFITS

- National Association for Family Child Care (NAFCC) Executive Level Membership
- NAFCC Accreditation Self-Study Kit with trained mentor support
- Free Telehealth and Teletherapy for you, your family and your assistants
- Access to specialized trainings like the Pyramid Model Community of Practice



Telehealth for Child Care Professionals

Getting to a doctor can be hard when your work day is dedicated to caring for children. Now, child care professionals, their employees, and their dependents can seek medical advice anytime, anywhere without a copy!

HOW IT WORKS

Talk directly with a physician or licensed mental health professional on your schedule, anytime, anywhere within minutes by phone, video, or mobile app - 24/7/365



TELEMEDICINE

24/7 access to a board-certified doctor for non-emergency care for your employees and their families anywhere, and anytime in order to get help with many common conditions, including: cold & flu, fever, rashes, asthma, allergies, sports injuries, sore throat, and more.

SERVICES OFFERED

- Unlimited use, no per-call fees or co-pays
- Services are completely confidential and available to employees and their dependents.
- Prescriptions called into your local pharmacy



TELE THERAPY AND MENTAL HEALTH

24/7 access to a experienced therapists, counselors, psychiatrists and behavioral health specialists to support many common issues, including: alcohol and substance use, stress, life changes, trauma, and more.



This publication was made possible by grant number 901709M-01-00. Its contents are solely the responsibility of the authors and do not necessarily represent the official view of the United States Department of Health and Human Services, Administration for Children and Families.

Telehealth

Registration and Enrollment

How to participate in this free benefit:

Completed by CCR&R

1. At the beginning of the month, your local Child Care Resource and Referral Agency will send out a registration [link](#) to all child care centers and homes.

Completed by Program Director

2. Program Directors will send the registration [link](#) to their employees.

Completed by Individual

3. Employees wanting to participate will use the registration link to indicate that they are interested in receiving this benefit. This is to register employees only. Participants who register by the 15th of the month will be eligible to enroll in the benefit starting the first day of the following month. For example, if someone registers on October 12, they will be eligible to enroll in the free telehealth benefit November 1. If someone registers on October 30, they will be eligible to enroll December 1.

Completed by OPSR

4. By the end of that month, OPSR will register you to receive these benefits.

Completed by Individual

5. Starting on the first day of the month after you have registered, you will receive an e-mail from Optima Benefits and Payroll, which will detail how you will complete enrollment to receive these benefits. It is during this enrollment time that you can sign up your dependents.

For questions, please e-mail telehealth@okschoolreadiness.org.



This publication was made possible by grant number 901709M-01-00. Its contents are solely the responsibility of the authors and do not necessarily represent the official view of the United States Department of Health and Human Services, Administration for Children and Families.

- Subscription to shared services
- Subscription to Brightwheel (child management software)
- Monthly newsletter
- Monthly trainings tailored towards family child care home providers

Help Oklahoma Thrive - Support working parents and your community by becoming a child care provider today!



Purpose

The Southwest Thrive Communication Welcome Bags are designed to celebrate and equip new Southwest Family Child Care Providers who join the Southwest Thrive Network and who are actively engaging in professional growth. These bags promote connection, collaboration, and ongoing learning among Southwest Oklahoma child care professionals.

Eligibility

Providers will receive a Thrive Communication Welcome Bag once the following steps are completed:

1. Thrive Membership Form — Provider has officially joined the Thrive Network by completing the membership form.
2. Engagement Requirement — Provider has attended two Thrive-hosted trainings

Distribution

- Bags will be distributed during in-person Thrive events, provider visits, or mailed if necessary.
- Staff will track eligibility through Thrive registration and training attendance logs.
- A signed acknowledgment form (digital or paper) will confirm that bags are for professional use only.

Usage Guidelines

- Welcome bags and their contents are for use within your child care business to support professional development and program quality
- Items are not for resale or personal profit.
- Thrive branding and materials should be displayed or used in ways that align with the program's mission of collaboration and continuous improvement.



Contact information: Athena Jarvis, Business Consultant
email: ajarvis@gpccrr.org phone: 888-878-4417



For training opportunities visit okregistry.org or click [HERE](#)

Hobart Office
901 South Broadway
Hobart OK 73651

Altus Office
111 Sequoyah Lane B-2
Altus, OK 73521

Cache Office
3 Crusader Drive



Great Plains CCRR Staff



Rachel Myrko
Regional Director
rmyrko@gpccrr.org
405-250-3360



Lisa Earls
Infant Toddler Specialist
lisa@gpccrr.org
888-878-4417



Athena Jarvis
Business Consultant
ajarvis@gpccrr.org
405-480-0686



Jennifer Hunt
Child Care Consultant
jhunt@gpccrr.org
580-301-0131

**Oklahoma Partnership for
School Readiness**



**Check www.OkRegistry.org for upcoming
trainings and events**

Okregistry

Be Sure to follow us on Facebook to follow our adventures, fun drawings and

games, and keep to date on upcoming training and events



[Our Company](#) | [Contact Us](#) | [FAQs](#) | [Privacy Policy](#)

Great Plains Child Care Resource & Referral | 901 South Broadway Ave. | Hobart, OK 73651 US

[Unsubscribe](#) | [Update Profile](#) | [Constant Contact Data Notice](#)



Try email marketing for free today!