

The November 2017 Newsletter Gardens Gate



Port St. Lucie
Botanical Gardens



VETERAN VICTORY CORPS

Veteran Victory Corps (VVC) is launched and on the path to complete it's mission: comradery, education, and service to home and community. Veterans, Active Duty, Retirees, Reservists and military family members are welcome! Associate members from the community, Friends of the Port St Lucie Botanical Gardens, Master Gardeners, and American Red Cross Service to the Armed Forces are all encouraged to participate as a supporter, educator, or mentor.

VVC is an ongoing activity, with opportunity to muster Wednesday through Sunday when the Port St. Lucie Botanical Gardens is open. VVC members are welcome to attend PSLBG's Partners in Horticulture Education series such as the Raised Bed Vegetable Gardening workshop held on October 28th. The next scheduled muster will be at 0900, just before the Hands On Propagation workshop on Saturday, November 25th. Workshop begins at 0930 with hands-on productivity through 1230.

For information on the Veteran Victory Corps, please contact Judy Nash-Wade at judy.nash-wade@redcross.org or call the Port St. Lucie Botanical Gardens at 772-337-1959.

Contents

President's Message
Board & Committees
Audio Discussion
Out & About with The Gardens

[Pg2](#)
[Pg2](#)
[Pg2](#)
[Pg4](#)

Newsletter Help Wanted
November Calendar
November Planting Calendar
What's Flowering & Edibles to Plant
Get Involved - Election 2018
Garden Center Update
Partners In Education
How-To Seminar: Cornucopia Centerpiece
Wacky Weeders
'Twas The Night Before Plant Show

[Pg5](#)
[Pg21](#)
[Pg22](#)
[Pg23](#)
[Pg25](#)
[Pg28](#)
[Pg29](#)
[Pg30](#)
[Pg31](#)
[Pg32](#)

Reminder

**HOW-TO SEMINAR: MAKE YOUR
OWN CORNUCOPIA CENTERPIECE
NOVEMBER 7TH • 10:00 - 11:30AM**



2410 SE Westmoreland Blvd.
 Port St. Lucie, FL 34952
 Phone: 772.337.1959
 Fax: 772.237.5952
 E-mail: info@pslbotanicalgardens.org
 Web: www.pslbg.org
 Hours: Wednesday - Saturday 10am - 4pm
 Sunday Noon - 4pm
 Closed Monday, Tuesday & Holidays
 Suggested Donations:
 Adults \$5
 Students \$2
 Children 12 & Under Welcome
 Free for FPSLBG Members and
 Active Military with family (IDs required)

Mission Statement . . .

Friends' mission is to create and maintain a beautiful, serene sanctuary in the center of Port St. Lucie that is environmentally sound and naturally diverse and to provide educational, cultural and recreational opportunities for all who visit.

Officers & Directors . . .

President:	Joleen King
Vice President:	Illona Christie
Secretary:	Melinda DeMarco
Treasurer:	Cheri Mabry
Directors:	Mike Alexander
	Heather Furnari
	Brenda Gustafson
	Judy Nash-Wade
	Jeffrey Policar
	Glenn Ryals
	Tim Sutton

Standing Committee Chairs . . .

Election Committee:	Stephanie Alessandrini-Giarraffa
Finance Committee:	Cheri Mabry
Gift Shop Committee:	Mike Alexander
Horticulture Committee:	Brenda Gustafson
Membership & Volunteer Committee:	Illona Christie
Resource Development Committee:	Melinda DeMarco
Strategic Planning Committee:	Glenn Ryals

Newsletter...

Editor:	Judy Nash-Wade
Design:	Mark Barnes

The Port St. Lucie Botanical Gardens is managed and operated by Friends of the Port St. Lucie Botanical Gardens, Inc. The Friends of the Port St. Lucie Botanical Gardens, Inc. receives no funding from any government agency. Your admission donations help us maintain and grow The Gardens.

PRESIDENT'S MESSAGE...

Holidays! Please include the PSL Botanical Gardens in your holiday planning this year, whether it's visiting our Gift Shop or our Propagation Garden Center for unique gift ideas or starting a tour of Port St Lucie with YOUR Botanical Gardens on Westmoreland Blvd with visiting friends and family. One holiday that is celebrated by the PSL Botanical Gardens is Arbor



Day, observed in January in Florida. We have a traditional tree planting and observance of memorials and dedications received from members and the public. A simple, dignified ceremony will be held January 19, 2018. As you gather with friends and family during this holiday season, consider remembering those whose memory you hold dear at the January Arbor Day celebration. There is a minimum donation of \$25 per name. Watch for more information in the December newsletter. Please enjoy this holiday season from your Friends at the PSL Botanical Gardens.

Joleen King
President

YOUR PLANTS MAY
LOOK DEAD AFTER
THE HURRICANE.
BUT ARE THEY?

AUDIO
DISCUSSION



PORT ST. LUCIE

CIVIC CENTER

ELEGANT • FULL-SERVICE • EVENT FACILITY

9221 SE Civic Center Pl PSLCivicCenter@cityofpsl.com
Port St Lucie, FL 34952 www.cityofpsl.com/civic
772-807-4488



PORT ST. LUCIE
PARKS &
RECREATION



THE SAINTS

At Port St. Lucie Golf Course
www.CityofPSL.com/Golf

2601 SE Morningside Blvd. • (772) 398-2901
Port St. Lucie, FL 34952 • Fax: (772) 398-2778

Welcome to All Garden Goers...

This month our
Jazz Jams will be held on
November 1st
November 15th
& November 29th
starting at 6:30 pm

JAZZ JAMS

At The Gardens

Donation \$6 per person.
Gardens & Jazz Society
Members \$5 per person.

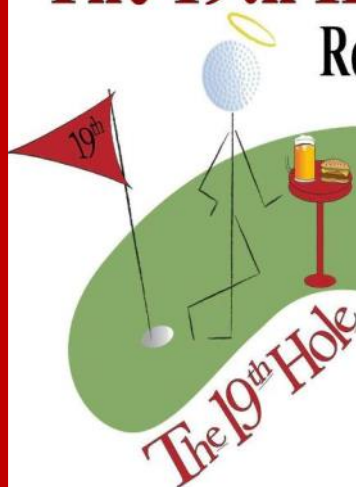
Sponsored by the
Fort Pierce Jazz & Blues Society

The 19th Hole at the Saints

Restaurant & Banquet Hall

772-337-0180

Carl Bussett/Rick Aslin
Proprietors



& Sandpiper Room

2601 SE Morningside Blvd.
Port St. Lucie, FL 34952



Making You & Your business Look Great

772.801.8800

Mark@MarkBarnesMusic.com

Business Card Designs
Logo Designs
Graphic Designs
Specialty Cards
Real Estate Ads & Designs
Video Home Tours
Basic Web Sites
Copyright Services
ASCAP & Music Site Setup
QR Code Design
Video Bios and Resumes
Power Point Presentations
Virtual Assistant
Real Estate Services

Out & About



With The Gardens

Sighted in The Gardens



New VVC member Carl Wade



Jeffrey Novak welcomes Vets



Veteran Victory Corp launched

FFGC District X Fall Meeting



FFGC 3rd V.P. Tina Tuttle, 2nd V.P. Marge Hendon,
1st V.P. Al Latina & District X Director Lynn Jones



Volunteer Wanted

Newsletter reporter: Assist
Newsletter Editor and Graphic
Design Artist by drafting assigned
articles for our monthly newsletter.

Send Inquiries to
news@pslbotanicalgardens.org



Junk In The Trunk - October Community Trunk Sale



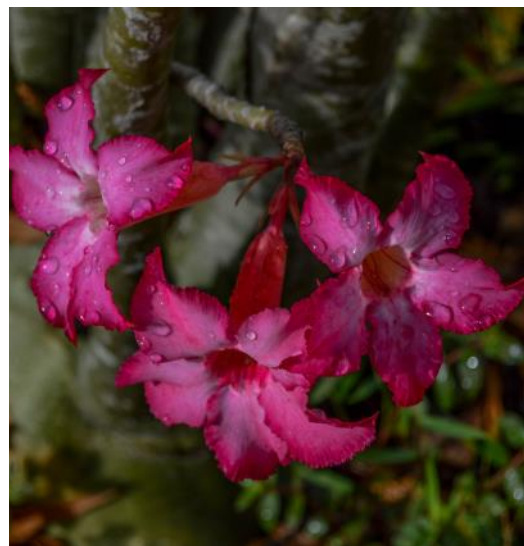
More Seen Around The Garden



Desert Rose



Marigolds









New Blinds ♥



Entrance Flags





EXPERIENCE COUNTS – AND SAVINGS ADD UP



Find out about the **Competitive Rates** and **Special Benefits** available through the AARP® Auto Insurance Program from The Hartford.

Ready to learn more? Contact our agency now:

POST INSURANCE



SEE HOW MUCH YOU COULD SAVE!
Call today for your **FREE**, no-obligation quote:

772-878-8184

POST INSURANCE

146 NW Central Park Plaza, Suite 102
Port St. Lucie, FL, 34986

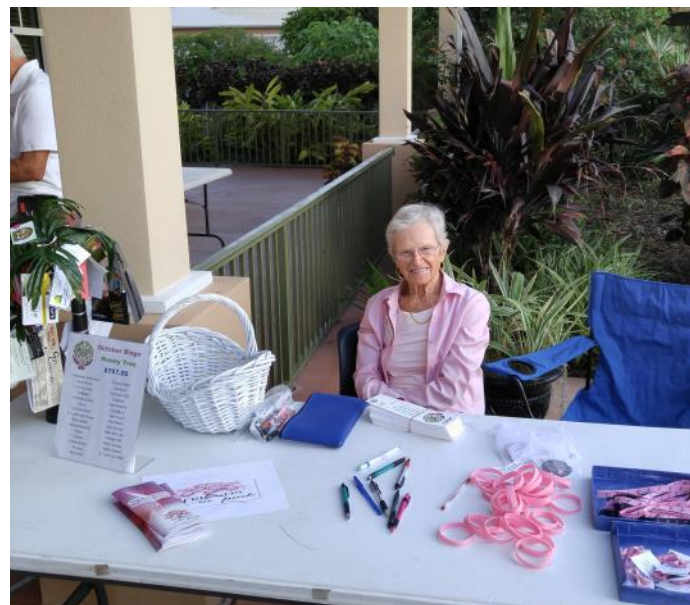
info@insurewithpost.com
www.InsureWithPost.com





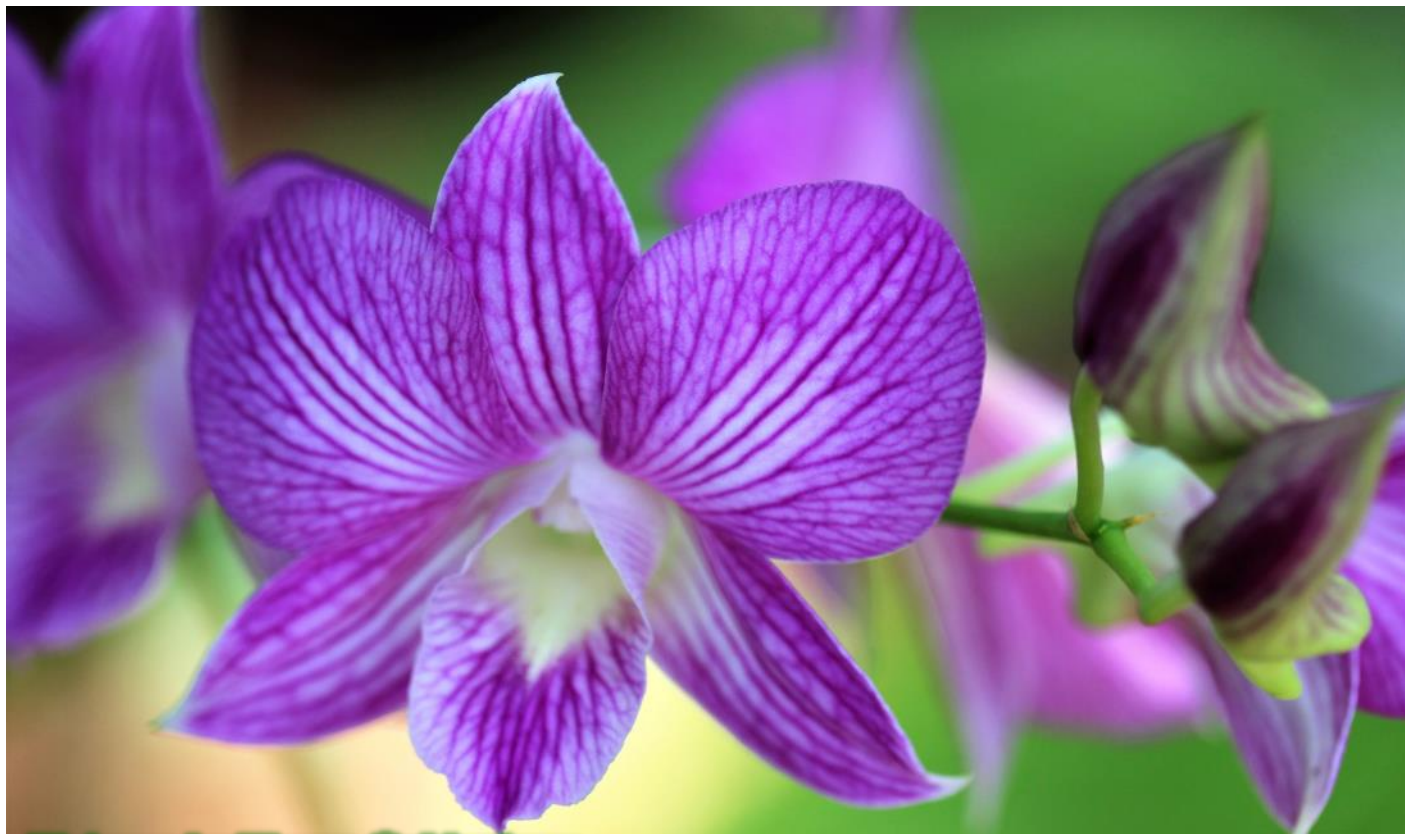
Reel Anglers Wear Pink



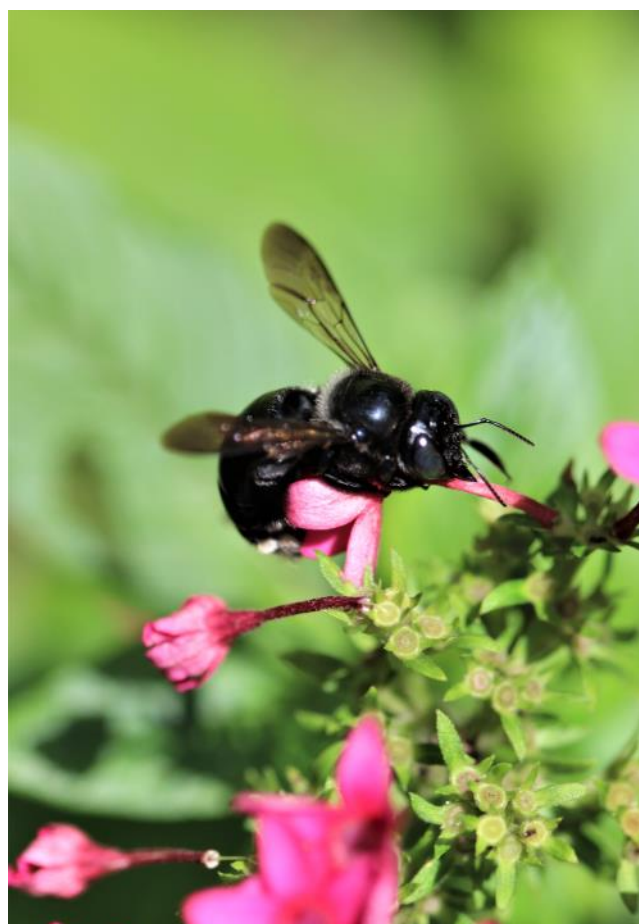




Visitor Photos



Pictures by Wayne Goldenberg





JAZZ JAMS

AT THE GARDENS 

Wednesday
November 1st, 15th & 29th
6:30 - 9:30 pm

Presented By



Presented By



November

Calendar of Events

1 st	Intermediate Spanish Classes	10:00 - 11:30 am	All welcome
1 st	German American Club Board Mtg.	2:00 pm - 4:00 pm	Members Welcome
1 st	Ft. Pierce Jazz & Blues Jazz Jams	6:30 - 9:30 pm	\$6 Donation, \$5 Members
2 nd	German American Chorus Rehearsal	2:00 - 4:00 pm	Members only
6 th	River Vista HOA Meeting	6:00 - 9:00 pm	Members Only
8 th	Intermediate Spanish Classes	10:00 - 11:30 am	All Welcome
8 th	Master Gardeners Lunch Meeting	10:30 am - 2:00 pm	Members Welcome
8 th	PSL City University Class #4	5:30 - 8:30 pm	Student Welcome
9 th	PSL Angler's Meeting	5:30 - 9:30 pm	All invited
11 th	How-To Seminar: Make Your Own Cornucopia Centerpiece	10:00 - 11:00 am	Members \$10.00 Non-Members \$35
13 th	Rio Lindo Board Meeting	10:00 am - 12:00 pm	Members Only
13 th	FPSLBG Board of Directors Meeting	4:30 pm - 6:30 pm	Members Welcome
14 th	PSL Orchid Society Meeting	12:00 - 3:00 pm	All Welcome
14 th	Somerset College Prep Honor Roll Ceremony	7:00 - 9:00 pm	Student & Guests Welcome
15 th	Intermediate Spanish Classes	10:00 - 11:30 am	All welcome
15 th	Ft. Pierce Jazz & Blues Jazz Jams	6:30 - 9:30 pm	\$6 Donation, \$5 Members
16 th	Garden Club of Stuart Jacaranda Circle Garden Tour	10:00 am - 12:30 pm	Members Welcome
16 th	German American Chorus Rehearsal	2:00 pm - 4:00 pm	Members Only
16 th	TC Rare Fruit Club Meeting.	6:00 - 9:30 pm	All welcome
18 th	Wacky Weeders	8:00 am - 12:00 pm	All welcome
19 th	South Fla Daylily Society Meeting	2:00 pm - 4:00 pm	All welcome
22 nd	Intermediate Spanish Classes	10:00 - 11:30 am	All welcome
23 rd	HAPPY THANKSGIVING	GARDENS CLOSED	
25 th	Partners in Horticulture Education	9:30 am - 12:30 pm	Veterans & Students
27 th	Rio Lindo Garden Club Meeting	12:45 pm - 3:30 pm	All Welcome
28 th	UF/ISAF Landscaping Series	12:00 - 1:30 pm	Registration Required
29 th	Intermediate Spanish Classes	10:00 - 11:30 am	All welcome
29 th	Ft. Pierce Jazz & Blues Jazz Jams	6:30 - 9:30 pm	\$6.00 Donation, Members \$5
30 th	German American Chorus Rehearsal	2:00 pm - 4:00 pm	Members Only



www.PSLBG.org • The Gardens is closed Monday's & Tuesday's
For more information on events, please call 772.337.1959

University of Florida IFAS Extension Central Florida Gardening Calendar — November

What to Plant

Annuals/Bedding plants: Create a display of fall colors with cool-season plants. Some examples include impatiens, strawflower, cape daisy, and pansy. **See Annuals:** http://edis.ifas.ufl.edu/topic_annual_landscape_plants

Bulbs: Many bulbs like to get their start in cool weather. Bulbs to plant this month include amaryllis, crinum, and the many varieties of elephant's ear. **See Bulbs for Florida:** http://edis.ifas.ufl.edu/topic_bulbous_flowers

Herbs: Continue planting herbs from seeds or plants. A wide variety of herbs like cooler, dryer weather, including cilantro, dill, fennel, parsley, sage, and thyme. **See Herbs:** http://edis.ifas.ufl.edu/topic_herbs

Vegetables: Lots of choices exist for November including beans, broccoli, kale, snow/English peas, and strawberries. **See Vegetable Gardening in Florida:** http://edis.ifas.ufl.edu/topic_vegetable_gardening

What to Do

Perennials: Divide and replant overgrown perennials and bulbs now so that they establish before the coolest weather arrives. **See Seeds and Propagation (Lawn and Garden):** http://edis.ifas.ufl.edu/topic_garden_propagation

Lawns: Watch for brown patch and large patch until May. These fungal diseases cause areas of grass to turn brown. Since treatment is difficult, prevention with proper cultural practices is key. **See Turf Diseases:** http://edis.ifas.ufl.edu/topic_turf_diseases

Scale insects: Take advantage of lower temperatures to apply horticultural oil sprays to control scale insects. **See Landscape Pest Management:** http://edis.ifas.ufl.edu/topic_landscape_pests

Irrigation: Turn off systems and water only if needed. Plants need less supplemental watering in cooler weather. **See Landscape Irrigation:** http://edis.ifas.ufl.edu/topic_landscape_irrigation

Poinsettias: Watch for hornworms on poinsettias planted in the landscape. This pest can quickly defoliate a plant. Handpick or treat only the infested area. **See Poinsettias:** http://edis.ifas.ufl.edu/topic_poinsettia

WHAT'S FLOWERING in Florida?

NOVEMBER

* In both North and South.

NORTH
CENTRAL

Beautyberry*

Native, deciduous (*Callicarpa americana*)

Sasanqua Camellia

Non-native, evergreen (*Camellia sasanqua*)

Mexican Sunflower*

Non-native, tender-evergreen (*Tithonia diversifolia*)

Ornamental Sugarcane*

Non-native, evergreen (*Saccharum arundinaceum*)

Tea Olive

Non-native, evergreen (*Osmanthus fragrans*)



Beautyberry*



Firecracker

Non-native, tender-evergreen (*Jatropha integrerrima*)



Mexican Sunflower*



Ornamental Sugarcane*

SOUTH

UF IFAS Extension
UNIVERSITY of FLORIDA



Gardening
SOLUTIONS

For more information, please visit
GardeningSolutions.ifas.ufl.edu

EDIBLES TO PLANT IN NOVEMBER

North

Central

South



Easily
Survives
Transplanting

Arugula, Beets, Broccoli,
Brussels Sprouts, Cabbage,
Cauliflower, Chinese Cabbage,
Collards, Endive/Escarole, Kale,
Kohlrabi, Swiss Chard



Survives
Careful
Transplanting

Carrots, Celery,
Mustard, Spinach



Use
Seeds

Onions (bulb,
green, shallots),
Radish, Turnips

Arugula, Beets, Broccoli,
Brussels Sprouts, Cabbage,
Cauliflower, Chinese Cabbage,
Collards, Endive/Escarole, Kale,
Kohlrabi, Lettuce, Swiss Chard

Carrots, Celery, Mustard,
Potatoes, Spinach

Onions (greens, shallots),
Peas (English),
Radish, Turnips

Arugula, Beets, Broccoli, Brussels
Sprouts, Cabbage, Cauliflower,
Chinese Cabbage, Collards,
Eggplant, Endive/Escarole, Kale,
Kohlrabi, Lettuce, Peppers,
Strawberry, Swiss Chard,
Tomatoes

Carrots, Celery, Mustard,
Potatoes, Spinach

Beans (bush, pole, lima),
Corn (sweet), Cucumbers,
Onions (greens, shallots),
Peas (English, southern), Radish,
Squash (summer, winter),
Turnips

UF IFAS Extension
UNIVERSITY of FLORIDA



Gardening
SOLUTIONS

GROW VEGETABLES

ORGANICALLY GROWN



**FREE
CLASSES**

Complete List Of All Classes At
www.pindersnursery.com
Must Register Online

**Pinder's
Nursery**
Palm City, Florida



**Mon-Sat 9am - 5pm
Sun 10am - 4pm**

Since 1975, Locally Owned & Operated
5500 SW Martin Hwy. Palm City

...growing flowers, food and friendships!

772-781-8085

Get Involved - Become A Candidate For Our Board Of Directors



Attention All Members ----- Candidates Needed

January 29, 2018 at the Annual Meeting there will be an election for five (5) positions on the Board of Directors of the Friends of the Port St. Lucie Botanical Gardens. If you are interested in running, you must:

- Qualify by being a member in good standing with a minimum of 25 volunteer hours, fifteen (15) of which have been at The Gardens.
- Complete a "Notice of Intent to Be a Candidate" form.
- Provide a Bio/Resume (optional) covering your experience as listed in the Qualifications for intent to be a Candidate.
- Return the Intent to Be a Candidate form and BIO/Resume so it is received at The Gardens by Dec. 31, 2017.

The Intent to Be a Candidate form and Qualifications are available for download at the link below, as well as available at the Botanical Gardens office. If you prefer, you may also request one by emailing info@pslbotanicalgardens.org.

Any questions may be directed to Stephanie Alessandrini-Giarraffa, Election Committee Chair via email at info@pslbotanicalgardens.org or by calling The Gardens at 772.337.1959.

[Click here to visit our website
and download the form](#)



VOTE

VOTE

VOTE



Board of Directors Elections 2018

- 10/30/2017** Appointment of Election Committee. (Not less than 60 days prior to Annual Meeting). Committee shall thereafter deliver a **NOTICE OF INTENT TO RUN** to be a Candidate form to all Members
- 10/30/2017** The **NOTICE OF INTENT TO BE A CANDIDATE** begins.
There are five (5) Board openings for Board of Directors.
Any member in good standing can request from the Gardens or online at www.pslbg.org/election.html the following:
- . Intent to run form
 - . the Qualifications to Run, in accordance with the Bylaws: Article III, Section 9 & Article IV, Section 2B and
 - . BIO requirements (optional)
- Please deliver intent to run applications with bio in a sealed envelope marked **ELECTIONS – CANDIDATE APPLICATION** to the Gardens office or email to Stephanie Alessandrini-Giarraffa, Chair of Elections at info@pslbotanicalgardens.org.*
- 12/31/2017** **LAST DAY TO FILE INTENT TO RUN FORMS WITH BIOS** to the Friends of the Port St. Lucie Botanical Gardens Office to the Attention of the Election Committee.
- 1/09/2018** Mail out of notice of Annual Meeting and Voting.
The Ballot with Candidate bios, proxies, agenda, minutes from 2017 Annual Meeting and financials will be listed on our website at www.pslbg.org/election.html.
- 1/29/2018** ANNUAL MEETING, VOTING & NEWLY ELECTED BOARD MEMBERS TAKE OFFICE

VOTE

VOTE

VOTE

  "like" us on
facebook

**VISIT OUR
WEBSITE** 



Connect. Integrate. Simplify.

Technology for every workplace delivering advanced functionality, ease of use and peace of mind.

TOSHIBA
BUSINESS SOLUTIONS



Pleased to be in
your office

Proud to be in
your community

**THINK OF US AS YOUR OFFICE
SOLUTIONS PARTNER!**

**Toshiba Business Solutions
Proud To Sponsor
Friends of the
Port St. Lucie
Botanical Gardens**

It's not just a slogan; they're words we live by. Our local Toshiba team lives in this community just like you. Let us help you save as much as 40% on your document management needs.

To learn more please contact:

Daniel Pimpo

772-402-4878

daniel.pimpo@tbs.toshiba.com



Lets
grow
together





Join our team of Garden Center Volunteers. We're expanding! Our Shade House will be ready just in time for the cooler weather and the snowbirds returning. We need assistance with planting seeds, pulling weeds, propagating from cuttings, up-potting, dividing and replanting, and all over garden clean up, workshops, building benches. Much to do and too little hands. The following are dates that we will be there to work with you on all the projects we have in works.

You'll have fun and meet new people who share your love of plants and working in the dirt.

November 4 & 5
November 18 & 19

Fall Propagation Schedule
Friday & Saturday
9:30 – 11:00 A.M.



Bring garden gloves and hand clippers. Covered shoes are required.
Hats and sun screen recommended. We have water available and lots of advice.

STUDENTS: EARN YOUR COMMUNITY SERVICE HOURS!

Call the Gardens at 772-337-1959 to sign-up.



WE NEED MORE PROPAGATION TABLES!

DONATE \$50.00 for materials to complete one table. We will provide the volunteer labor from **Mr. Merv** and his helpers. Mr. Merv is a Master Gardener, Vietnam Vet and a FPSLBG volunteer. Merv Yearwood has been instrumental in completing eight tables for the Shade House and five for propagation.

You will receive:

***A Big Thank You and your photo
in the newsletter with Mr. Merv.***

Plus your choice of 6 plants FREE!

We **Wish** you would Volunteer at the Friends of the
Port St. Lucie Botanical Gardens Propagation

I Wish...

For One Gallon Pots,
for all the weeds
to go away!





Partners in Horticulture Education



Port St Lucie Botanical Gardens High School Horticulture Club is back in session starting Saturday, September 23, 2017 with over 20 Somerset College Preparatory students signed up after our first-year pilot. With the assistance of Master Gardeners and PSLBG volunteers, students will learn basic Horticulture practices while providing community service hours at the garden. This program is open to all High School Students. Add your school logo to our growing Horticulture experience. Contact Jeffrey Policar or Heather Furnari 772-337-1959 for more information.

HORTICULTURE CLUB WORKSHOP SCHEDULE

Workshop: 9:30am – 11:00am

Garden Work Time: 11:00am – 12:30pm

Saturday, November 25th – Hands on propagation – Propagation Techniques for Maximum Efficiency and Production of plants.

Saturday, December 30th – Hands on Vegetable gardening – Preparing Garden Beds for Vegetables.

Saturday, January 27th – Bring in the New Year in with Fun with Fertilizer! Presented by Kate Rotindo, Urban Horticulture Extension Agent, UF/IFAS St. Lucie County Extension

Saturday, March 24th - Pruning Techniques – The Why, When and How to Prune your trees by Lynda Salsbury, Master Gardener and recipient of the Florida Friendly Landscaping award for an outstanding yard.

Saturday, April 28th and Saturday, May 26th Workshops -TBD

NOTE

Please bring garden hand clippers and gloves. No open toe shoes. We recommend sturdy shoes/sneakers, hats, suntan lotion and comfortable clothes for working outside. Please be on time and no phones while at the Garden. Water will be provided.



Horticulture How-To Series:
Cornucopia Centerpiece
for your Thanksgiving Table
Port St. Lucie Botanical Gardens Propagation Center

Presented In the Propagation Garden Center

CORNUCOPIA CENTERPIECE
FOR YOUR THANKSGIVING TABLE



Saturday, November 11th, 10:00am – 11:30am

This Workshop will teach you how to
Create a fabulous centerpiece
for your Thanksgiving table.

Cost: **FREE for Members**, Non-Members: \$25.00
Become a member and attend Free.

You will have a chance to Win an arrangement

CLICK HERE TO REGISTER

If you have enjoyed the stunning flower arrangements displayed in our pavilion, then you will not want to miss the three educational workshops planned for this upcoming Holiday Season presented by Paul Renwick. Paul, a long time floral designer, event planner, and owner of a Floral Design Shop in Alameda, California, worked with many of the Hollywood stars planning and designing their weddings and special events. He was chosen to create the Presentation Bouquets, flower arrangements and decorations for the 1992 World Skating Championships, held in Oakland, California. His special gardening talents have added to the ambience of the Friends of the Port St Lucie Botanical Gardens. As a member and volunteer, he is responsible for the Seasonal Walkway and Co-Chairs the Propagation/Garden Center as well as Chair of our Landscaping Committee. **Be sure to sign up early!**



Every
Detail
Counts

Plantation Shutters
Wood or Poly

\$17⁹⁹
Starting at sq. ft. **On Sale Now!**

SHADES • SHUTTERS • DRAPERIES



Vertical Village

Shades • Shutters • Draperies
Family Owned and Operated For 3 Generations

**VOTED BEST WINDOW
COVERINGS!**

- Free Shop @ Home Service
- Free Measuring & Installation
- Ask About **FREE** Motorization See Store For Details

SHOWROOM: 10658 S US Hwy 1 • Port St. Lucie | www.verticalvillage.net | **772-340-0400**



ENLIST: JOIN THE Saturday Wacky Weeders'

When: November 18, 2017

Where: PSL Botanical Gardens

Time: 8:00AM - 12:00PM

LUNCH Served



Earn Double volunteer hours (Core & School Students)

We need your help to get your beautiful Botanical Gardens in perfect shape for the upcoming Holiday Season and all the events we have planned for our wonderful members and guests!!

JOIN US FOR A FUN MORNING – ALL VOLUNTEERS INVITED

Consider yourself less than able-bodied? There are jobs for everyone, no matter age or ability. Bring gloves, clippers and any personal tools you prefer.



'Twas The Night Before...

NGC STANDARD FLOWER SHOW
SMALL - STANDARD
HOLIDAY FLOWER SHOW

Presented by

DISTRICT X JUDGES COUNCIL

Member of National Garden Clubs, Inc.
Deep South Region
Florida Federation of Garden Clubs, Inc.



Port St Lucie Botanical Gardens
2410 SE Westmoreland Blvd.
Pt. St. Lucie, FL 34952

December 2, Saturday 10am - 4pm
December 3, Sunday 12 noon - 4pm

Admission Free



Are you a Member of Friends? Friends Membership is...



Horticulture



Education



Preservation



Community



Become a Member of a Growing Community...
Friends of the Port St. Lucie Botanical Gardens, Inc.



**Click Here to
Join or Renew Your
Membership Today**

