

# PANGBOURNE MAGAZINE

ISSUE 164

SEPTEMBER/OCTOBER 2021





# We have demand from buyers in your area



## Sell Your Home With Haslams

- We're the **expert agent of choice since 1838**, with experienced and knowledgeable staff and a proven track record for sales in the Pangbourne area and beyond (read our **Google Reviews**).
- We have a large high street and online presence, including all major property portals, so your home is **seen by millions of potential buyers**.
- The Haslams Group has a market leading presence in the Berkshire region; which **increases your customer reach**. Plus, we're part of the LonRes network, connecting you to buyers moving out of London.

0118 960 1000 | Haslams.net  
Reading's Estate Agent

---

## CONTENTS

Local News .....	5
What's On .....	8
Crossword .....	11
Church News .....	12
Local Clubs .....	19
French Cinema .....	28
Education .....	32
Pangbourne Place-Names .....	40
Environmental News .....	44
Council News .....	49
Classified Ads .....	53
Useful Numbers .....	54

### THE PANGBOURNE MAGAZINE

Production/Advertising/Finance:  
**Herald Graphics – 0118 9311488**

Submission of articles\* and adverts:  
**pangbourne@heraldgraphics.co.uk**  
*(\*receipt of an article is not a guarantee of inclusion)*

Deadline for inclusion in the  
November/December Magazine:  
**Friday, 8th October 2021**  
*(for distribution at the end of the month)*

Distribution: Lucy Bromage – 07747 056193

Whilst every effort is made to ensure the accuracy of information printed in the Pangbourne Magazine, the Editor and publishers cannot accept any responsibility for the consequences of any errors that may occur. The opinions expressed in this magazine are those of the contributors and are not necessarily those of the Editor or of the Committee. Articles in the Pangbourne Magazine, or the information contained in them, may not be used or reproduced by other publications without the express permission of the Magazine Committee. Whilst care is taken to establish that our advertisers are bona fide, readers are advised to take precautions before entering into any agreement.

Front cover picture courtesy of:  
Goring Gap Boat Club

IF YOU WOULD LIKE TO SUBMIT A PHOTOGRAPH FOR THE PANGBOURNE MAGAZINE  
FRONT COVER, PLEASE SEND TO PANGBOURNE@HERALDGRAPHICS.CO.UK FOR CONSIDERATION.  
YOUR IMAGE WOULD NEED TO BE HIGH RESOLUTION AND CONTENT SHOULD BE OF LOCAL INTEREST.

Tel: 0118 984 1333  
[www.ninos-trattoria.co.uk](http://www.ninos-trattoria.co.uk)

*Nino's*  
TRATTORIA

The screens and “booths”  
are staying!

We're putting customer safety and satisfaction first, by continuing with our reduced capacity and maintaining all social distancing measures. Having been repeatedly named as one of the most COVID-secure places around, we think it's better to try and stay that way for a little longer.

*Keep an eye on our website and social media for all updates and current opening times.*



ADVANCED NOTICE: We will be closed between 5/9/2021 and 18/9/2021. Apologies for any inconvenience caused.



# Woof & Bubbles

*Qualified, Professional dog grooming with style.*

*Nicky Viccars*  
Tel: 07920 131 177  
Email: [Nicky@woofandbubbles.co.uk](mailto:Nicky@woofandbubbles.co.uk)  
[www.woofandbubbles.co.uk](http://www.woofandbubbles.co.uk)

## GO FOR GOLD – YOU'RE THE ONE THAT YOU WANT

Be kind for everyone you meet is fighting a hard battle. One of Plato's truisms and particularly relevant in this post pandemic world.

As the Japan Olympics ended and the torch was passed to France for 2024 it's good to look forward and also back to the origins of the Olympics in Ancient Greece.

As the news shows in the terrible destruction caused by the wildfires in Greece people are increasingly anxious re the effects of climate change.

Thankfully as humans we can change and hypnotherapy and N.L.P is an effective treatment – call me on 07881 878545.



“... spot the Greek Ern”

Our good friend and lockdown buddy's friend Brenda came up with a very good insight in “Free association” re Greece – *Shirley Valentine* and those who have seen this brilliant film may remember one of Shirley's musings to “The wall” ... “I've led such a little life and even that'll be over pretty soon. I've allowed myself to lead this little life when inside me there was so much more. And it's all gone unused and now it never will be. Why do we get all this life if we never use it. Why do we get all these feelings and dreams and hopes. If we don't ever use them.”

Be safe and take care of yourself and each other.

*Jim Tubbs-Galley (Dhp, Hypnotherapist, Reiki Master, Tree Hugger)*

## PANGBOURNE VILLAGE MARKET

We have reopened in the village on Fridays 9.30am til 11.30am every week. However we are struggling to remain open because so many of our pre covid customers have not returned and our sales have dropped dramatically. We have been open for over 40 years but now the continuance of the market is in jeopardy.

We sell fresh vegetables, seasonal soft fruit, homemade preserves, very reasonable homemade cakes, bread and scones, honey, eggs, plants, cards, pictures and woodturning items. We have the occasional visiting craft or produce stall. We also have Davids Fish Stall every fortnight or so offering a very good selection of fish fresh from Brixham.

Please will you make the effort to visit us on Fridays at the village hall so we can continue to offer the village a good selection of home grown and home produced items.

We look forward to welcoming soon. Thank you.

## “WEEKEND WALKS BY THE THAMES”

2021 marks two notable anniversaries for the Thames – 25 years since the opening of the Thames Path and 250 years since the founding of the Thames Navigation Commissioners, who managed the river before the Thames Conservancy. By happy coincidence, it also sees the publication of a new book of Thames Walks by Pangbourne resident John Prior.

His colourful 48-page paperback describes 12 short walks exploring some of the riverside villages and towpaths along the reaches of the Thames in Berkshire and Oxfordshire. Each route is no more than three miles long and includes places of interest and a café, pub or shop and most also pass a children's playground, or there is one nearby. The starting points have been chosen for easy parking and/or access by public transport.

John and his wife Anne have lived here for over 40 years, bringing up three children. Keen walkers, they realised that any family walk had to be child-friendly – not too long and preferably including a playground and an ice cream! Some of the routes they collected were published in *Weekend Walks West of Reading* (2014), followed by *Weekend Walks South of Oxford* in 2017. This third collection focusses on the middle Thames from near Abingdon downstream to Cookham. Being 'senior citizens' now, with five grandchildren, the walks were again chosen to suit all ages!

The new routes are centred on Caversham, Cookham, Dorchester, Hambleden, Hurley, Shillingford, Shiplake, Sonning, Streatley, Sutton Courtenay and Wallingford, as well as (of course!) Pangbourne. John says “I really enjoyed choosing these walks, photographing places of interest and researching their history and hope that anyone trying them out has a great time too”

So if you are looking for suggestions for outings not far from home, then John's new book could be the answer!

Priced at £5.95, all three books are available from Garlands in Pangbourne, Inspiration in Goring, WH Smiths and Waterstones in Reading, the Nature Discovery Centre in Thatcham and the Wallingford Bookshop. They are also on the Amazon website.





RESOLUTIONS - TRY HYPNOSIS » » » WORK - TRY HYPNOSIS » » » REST - TRY

AS FEATURED IN OK! MAGAZINE, SUNDAY EXPRESS MAGAZINE  
AND THE SUNDAY PEOPLE SUPPLEMENT.

# TranszzzzFormations

*Be free of old habits and  
insecurities with hypnotherapy*



Addiction • OCD  
Stress • Anxiety and Fear  
Depression • Shyness  
Public Speaking  
Self-Esteem and Confidence  
Sleeping Problems  
Stop Smoking • Weight Loss

Jim trained at the highly respected RBCCH (Royal Berkshire College of Clinical Hypnosis) and in 1993 trained at UK London College of Clinical Hypnosis, so you can rest assured of many years experience. Drawing from the fields of Hypnotherapy, Cognitive Behaviour Therapy (CBT) and Neuro Linguistic Programming (NLP). Jim uses the most effective techniques from clinical practice to enable you to develop an enhanced and sustainable sense of well being, control and happiness.

Everyday debilitation fears and phobias cause unnecessary distress for thousands of people. Feel better about yourself. Hypnosis will help you retrain your mind so you'll feel much more confident in future situations.

Evenings, late nights and  
weekend visits available

**07881 878 545**

Based in Reading town centre

**[www.transzzzzformations.co.uk](http://www.transzzzzformations.co.uk)**

The Old Forge, 8 Merchants Place, RG1 1DT

Corporate and business  
group sessions – hypno  
boost your workforce!



WEALTH CREATION - TRY HYPNOSIS » » » GOOD HEALTH - TRY HYPNOSIS » » » HAPPINESS - TRY HYPNOSIS » » »

HYPNOSIS » » » PLAY - TRY HYPNOSIS » » » PHYSICAL - TRY HYPNOSIS » » » MENTAL - TRY HYPNOSIS » » »

EMOTIONAL - TRY HYPNOSIS » » » WEIGHT CONTROL - TRY HYPNOSIS » » »

A . B .  
**WALKER**  
 THE FUNERAL PEOPLE

**A FAMILY BUSINESS SINCE 1826**  
 THATCHAM – 01635 873672  
 TILEHURST – 0118 304 0068  
 READING – 0118 957 3650

ALSO AT BRACKNELL, CAVERSHAM,  
 HENLEY, MAIDENHEAD, WOKINGHAM.

TRADITIONAL AND CONTEMPORARY  
 FUNERAL SERVICE AND DIRECT CREMATION  
 FLORAL DESIGN AND MONUMENTAL MASONRY  
 PRE-PAID FUNERALS, LATER LIFE LEGAL SERVICES  
 BEREAVEMENT CARE



WWW.ABWALKER.CO.UK



**Golden Charter**  
 Funeral Plans



**mb** mortimer burnett

Chartered Accountants & Business Consultants

**Are you looking for a new Accountant?**

*Specialising in:*

- Cloud Accounting
- New Business Start-ups
- Bookkeeping
- Business Planning
- Tax Services
- Management Accounts
- Payroll / CIS
- VAT

*We can help your  
 business grow and reduce costs*

Xero • QuickBooks • Sage

**CONTACT US FOR A FREE CONSULTATION**

**01491 874332**

[lisa@mortimerburnett.co.uk](mailto:lisa@mortimerburnett.co.uk)

[www.mortimerburnett.co.uk](http://www.mortimerburnett.co.uk)

The White House, Mill Road, Goring on Thames RG8 9DD



*Woodborough*  
 HOUSE

Say goodbye to awkward  
 gaps and loose dentures.  
 Get your dream smile with  
 dental implants!

*Changing lives through  
 smiles.*

CALL US TODAY ON  
**0118 984 3108**

OR EMAIL  
**CATHY@WOODBOROUGHHOUSE.COM**

WWW.WOODBOROUGHHOUSE.COM

**Tuesday 21<sup>st</sup> September**

**10.30am to 3.30pm**

Entrance : £ 5.00

Refreshments available and plenty of parking  
available on site

The Barn

Purley-on-Thames, RG8 8BW

(Goosecroft Lane, off Beech Road)

Approaching from Pangbourne along the A329 turn right  
at Purley Rise onto Beech Road opposite Merit Tyres.  
Turn left into Goosecroft Lane to reach the Barn.

[www.whitedoorbrocante.co.uk](http://www.whitedoorbrocante.co.uk)

Instagram @whitedoorbrocante

**A decorative fair in the heart of  
West Berkshire with over 20 dealers  
coming from around the country.**

**English and French country antiques  
& vintage goods including furniture,  
home décor, garden items, linens &  
handmade treasures.**



The White Door Brocante was set up in 2019 to bring the authentic feel of a French antiques market to West Berkshire.

This year's brocante will take place on Tuesday 21st September at the historic 17th century barn at Purley-On-Thames, just along the river from Pangbourne. You will find a beautiful array of decorative antiques and vintage goods including furniture, home décor, architectural objects, old linens and handmade treasures.

Having started with a roster of mainly local talented sellers, we have expanded by adding the crème of dealers from further afield including Norfolk, Somerset and Lancashire. We will also be showcasing a number of outstanding artists and artisans.

If you are looking for timeless, affordable one-off finds that add personality to your home look no further. Free parking and refreshments are available. Entrance £5.

[www.whitedoorbrocante.co.uk](http://www.whitedoorbrocante.co.uk)



**Social distancing  
doesn't mean no socials...**

**One of the great things  
about the Oddfellows  
is sharing good times  
with friends.**

Although we can't see  
each other face to face  
right now, we're doing  
lots of great stuff online.

**Tuesdays, 10.30am**  
Coffee and Games  
Morning (Online).

**Wednesdays, 3pm**  
Fun Weekly Quiz (Online).

**Thursdays, 11am**  
Gentle Exercise Class  
(Online).

**Contact Debbie on 07375 935 663 or  
[readingdistrict@oddfellows.co.uk](mailto:readingdistrict@oddfellows.co.uk) for  
further information and joining instructions.**

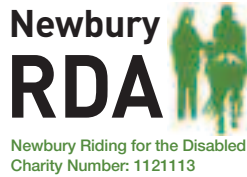
 **the** **oddfellows** SINCE 1810  
making friends, helping people

**f Reading Oddfellows**  
**[www.oddfellows.co.uk](http://www.oddfellows.co.uk)**

The Oddfellows is the trading name of The Independent Order of Odd Fellows  
Manchester Unity Friendly Society Limited, Incorporated and registered in England and Wales  
No. 223F. Registered Office Oddfellows House, 184-186 Deansgate, Manchester M3 3WB.

Ref 1699





## AUTUMN GIFT FAIR

THURSDAY 23rd SEPTEMBER 2021

9.30am – 4.00pm

HILLFIELDS FARM, PARK WALL LANE,  
LOWER BASILDON, RG8 9PE

Entry £5 (Children free)

50 FABULOUS STALLS –  
FOOD, GIFTS, CLOTHING & HOMEWARES

Coffee, tea and cakes served all day.

Light lunches available 12-2pm

For further information please visit our website:  
**newburyrda.co.uk**

The Charlie Waller Trust  
invites you to a  
**PIANO RECITAL**  
BY CHRISTOPHER BURROWS

The Long Gallery, Englefield House, RG7 5DU  
Saturday 18 September  
7pm drinks and canapés  
7.45pm recital

**TICKETS £25 EACH**  
Purchase online at <https://bit.ly/cburrows>

Christopher is an extraordinarily talented keyboardist and his concerts around Berkshire and Wiltshire are regularly sold out.

## TWINNING ASSOCIATION FRENCH FILM NIGHTS

The Twinning Association is planning to recommence French Film Nights in October 2021. However, the screenings listed may have to be changed as they are subject to screening licences, and also to any changes in government guidance on coronavirus. The intended list for the season is:

### 31st October 2021 – School of Life ('L'École buissonnière', 2016)

More properly translated as 'Playing Truant', this film by Nicolas Vanier is about a young boy, adopted by a gamekeeper, who befriends a poacher on a country estate, but there is more to this story than meets the eye.

### 28th November 2021 – The Diving Bell and the Butterfly ('Le scaphandre et le papillon', 2007)

By the American artist and director, Julian Schnabel, this is the astonishing and life-affirming true story of Jean-Dominique Bauby, editor of Elle magazine, who suffered a massive stroke which left him trapped in his own body.



### 30th January 2022 – Cezanne and I ('Cézanne et moi', 2016)

A film by Danièle Thompson about the boyhood friendship between Paul Cézanne and Émile Zola, who shared everything but whose lives took very different turns.

### 27th February 2022 – Irreplaceable ('Médecins de campagne', 2016)

A film by Thomas Lilti. A country doctor, who considers himself irreplaceable, becomes seriously ill and has no choice but to find a replacement.

### 27th March 2022 – Frantz, 2016

A film by François Ozon. Germany, 1919 – Anna visits the grave of her fiancé, Frantz, who died in battle in World War One. She meets a young Frenchman, Adrien, who declares himself a friend of Frantz... a timely exploration of healing and forgiveness across European borders.

*All films screened at 7.30pm. Village hall doors open 6.45pm. Entry £6.*

*Quality wine, beer and soft drinks available.*





We stock delicious local, British & Continental cheeses as well as a wide range of delicatessen products. We're proud to support small artisan producers.

We pride ourselves on our customer service and are dedicated to providing cheese at its very best.

Come and visit us at 17 Reading Road, Pangbourne  
Find us on Facebook – The Pangbourne Cheese Shop  
Follow us on Twitter @PangCheeseShop

www.pangbournecheeseshop.co.uk 0118 984 3323

## Revitalise Foot Care

Mobile Foot Health Professional

Nail trimming, cracked heels, corn and callus removal, fungal infection, thickened nails and verrucae advice.

**Contact Karen on 07542 676158  
or 0118 3435579**



www.revitalisefootcare.com  
revitalisefootcare@gmail.com



**Dinners sorted with one of our  
delicious award-winning pies.**



greensofpangbourne.com 0118 9842063



GoPButchers



GreensOfPangbourne



**Garlands for high quality food and much more.**

Seeds, nuts and grains | Sustainably caught fish |  
Organic fruit and veg | Artisan bread | Dairy &  
Non-dairy chilled foods | Speciality and "Free from"  
foods | COOK remarkable food for your freezer | Local  
beer | Organic wines | Health supplements | Natural  
Cosmetics | Eco-friendly household products |  
BOODY bamboo clothing | Candles |  
Essential Oils | Loyalty scheme

6 Reading Road, Pangbourne, RG8 7LY  
0118 9844770 orders@garlandsorganic.co.uk  
garlandsorganic.co.uk



**Chiropractic  
the McTimoney  
Way**

for people and  
small animals

Multi-disciplinary clinic offering integrated  
health care in a friendly, relaxed setting

**Chiropody & Podiatry  
Sports & Remedial Massage  
Acupuncture & Homeopathy**

*Suitable for all ages. Free spine check available.  
Evening and weekend appointments available.*

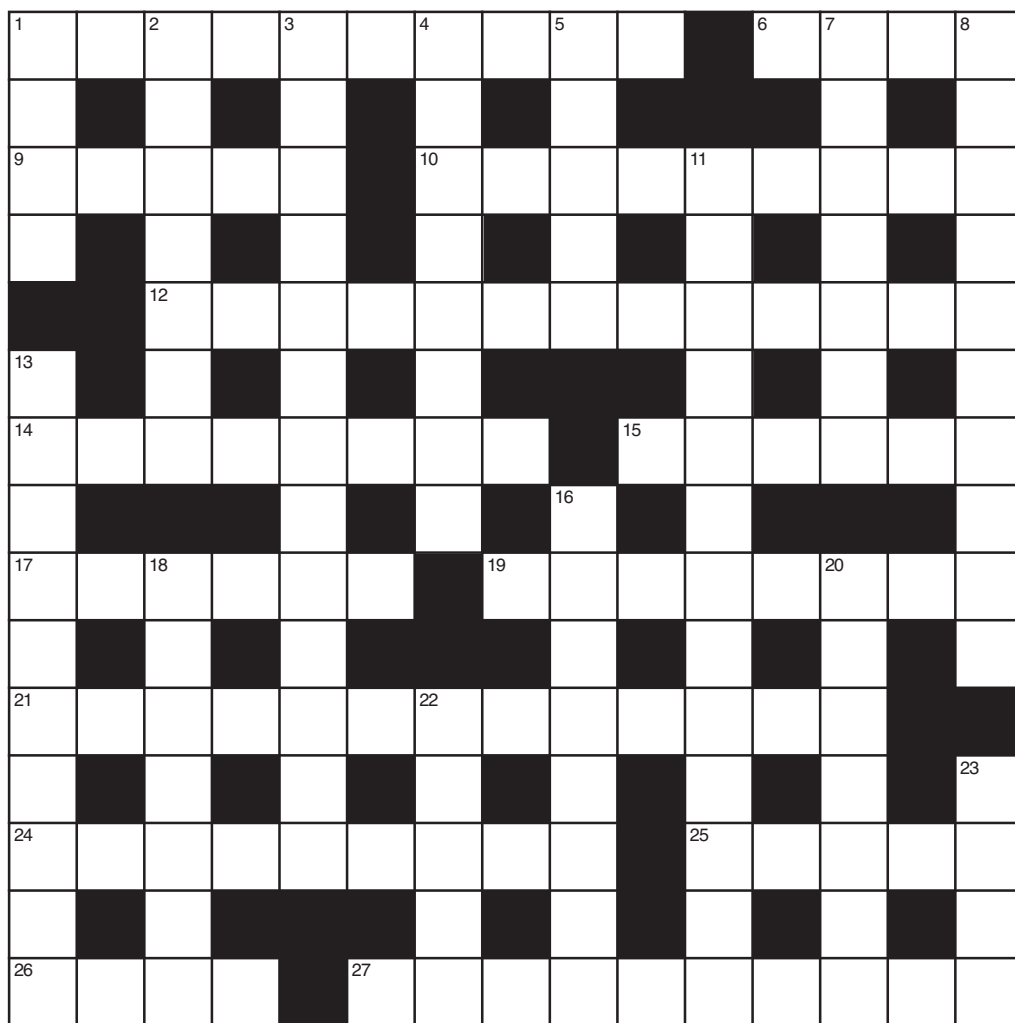
*For Health Chiropractic*

**0118 984 3473**

Unit 2, The Old Mill  
61 Reading Road  
Pangbourne  
RG8 7HY

www.forhealthchiropractic.co.uk





CANTOR'S CROSSWORD NO. 19

## ACROSS

1. Rather hazy after the distillery visit? (6, 4)
6. Celestial bright spot for retreating rodents (4)
9. The natural Midlands location for this, as 100mph cars go? (5)
10. Grouch? O! Looks, sounds like another marksman who got stuck into at sea? (9)
12. It's Gospel! Her angel dream may, will, give birth to her (4, 9)
14. Pure pastiche past! When you deck Mimi you've confused things (8)
15. It can take an age from the outset to complete a rubber (6)
17. An apparent suggestion to eat relieves pressure (4, 2)
19. Years ago, at a gin court in France, Rex Henry called him up (not Smith or Walker) (8)
21. Tough try on for a soft touch? (4, 4, 5)
24. For deciphering this label you might try a palm reading (3, 2, 4)
25. You take a long look and it only sounds like a step up – or down (5)
26. It may be seen as an unwelcome intrusion as well as a porcine habitat (4)
27. They say you could see the soft drink stains fade away here . . . in your dreams! (10)

## DOWN

1. Senior citizen ends up in regularly transmitted drama (4)
2. For the best result I always finish by choosing the maternal line (7)
3. So bound to a Bridge bid? Surely Acol can't truly be the only answer? (13)
4. Proverbially a mountain man – coming or going – it all rather depends (8)
5. Young offshoot in family ends by being rather self righteous (5)
7. These surely are not firm offers being made? (7)
8. A distraction – rather fishy but may colour your choice (3, 7)
11. The answers can't be written – they must be heard (4, 9)
13. For little ones (in Scotland), it's very, very early (5, 5)
16. One may wax or wane how one feels about this (8)
18. Spoke briefly about the old Gaelic tongue (7)
20. The future? May depend on what may emerge: tiny ears and eyes, you know! (2, 5)
22. Her start? A classic 150, a Royal Academician initially, ended as a capitalised butt (5)
23. Go ahead and swing it – just don't get out of your depth. (4)

(ANSWERS ON PAGE 35)



## THE PARISH OF PANGBOURNE WITH TIDMARSH AND SULHAM

[www.pangbournechurches.org](http://www.pangbournechurches.org)



Sharing God's love with the people we serve

### CHURCH SERVICES DURING SEPTEMBER AND OCTOBER

#### SEPTEMBER

##### Sunday 5<sup>th</sup>

10 am Holy Communion St James

##### Sunday 12<sup>th</sup>

7.45 am Holy Communion (BCP) St James

10 am Family Worship St Nicholas

##### Sunday 19<sup>th</sup>

10 am Holy Communion St James

##### Sunday 26<sup>th</sup>

10 am Holy Communion St James

#### OCTOBER

##### Sunday 3<sup>rd</sup>

10 am Holy Communion St James

##### Sunday 10<sup>th</sup>

7.45 am Holy Communion (BCP) St James

10 am Harvest Celebration St James

##### Sunday 17<sup>th</sup>

10 am Holy Communion St James

##### Sunday 24<sup>th</sup>

10 am Holy Communion St James

##### Sunday 31<sup>st</sup>

10 am Holy Communion St James

Wednesday morning Holy Communion services will be held each week in St James at 10 am

Sunday at Ten services in St James will be live-streamed via YouTube

#### *A word from the newly appointed priest-in-charge of Pangbourne, Tidmarsh and Sulham*

To introduce myself, my name is Rev Mark Hopkins and I am excited to be joining the parish of Pangbourne, Tidmarsh and Sulham as your new priest-in-charge.

I grew up near Grantham, Lincolnshire, the son of a Rector. I attended church from an early age and was confirmed at 15, so have lots of experience living in a large Rectory and garden fetes! I studied for an MA in English at Fitzwilliam College Cambridge and for an MA in Theology at Trinity College Bristol. In my working life I was a children's worker and primary school teaching assistant in Wolverhampton before training as an ordained minister, and have more recently served as a curate near Smethwick and Rector of Castle Bromwich in the West Midlands.

As a minister I am most familiar with traditional services but also enjoy more modern worship services and working with young people and schools. I have a particular passion for fellowship groups, teaching, mental health awareness and inclusion.

I am looking forward to getting to know you all over the next few months and getting involved in the community. Most of my hobbies are musical – I enjoy singing tenor in a community choir and play the piano and violin. My outdoor hobbies are walking in beautiful countryside, cycling holidays, and travel. I also love board and card games.

Pangbourne is a new area to me, although my sister used to live at Tilehurst, so as I arrive I hope you will all be able to assist me in finding my feet and getting to know the local shops and amenities.

God bless, Revd Mark



#### NOAH'S ARK in September and October



Noah's Ark toddler and baby group  
each Friday during term time  
at 10 am in St James, Pangbourne  
from 10th September to 22nd October

Story time, songs, chat and friendship  
for babies, toddlers, preschoolers and their  
parents, grandparents and carers.

[www.pangbournechurches.org/noah-s-ark](http://www.pangbournechurches.org/noah-s-ark)



#### Zip Wiring teddies from St James

Come and enjoy the spectacle of  
watching your teddy zip wire from  
St James' tower and help raise funds for  
church. The fun begins at  
10am on Saturday 11th September.

If you're feeling energetic you  
could walk or cycle to  
St James as part of Ride & Stride

[www.berkschurchestrust.org.uk/ride-and-stride-2/](http://www.berkschurchestrust.org.uk/ride-and-stride-2/)



## St Bernadette's Catholic Church

Sunday Mass at 9:30 am

[www.douaiparish.org.uk](http://www.douaiparish.org.uk)

0118 971 5350

---

### Farewell to Fr Peter...

For the last nine years, Fr. Peter Bowe has been the parish priest at St. Bernadette's. He has now stepped down from this role and is continuing with other monastic work in the Douai Abbey community. Many parishioners joined in a special 'farewell' Mass at Douai Abbey on 25th July.

At the end of the service, Sue Edwards, the Chair of the PPC, spoke warmly about all Fr. Peter had done during his tenure as Parish Priest. She thanked him for the unstinting support he has given each and every parishioner, his humour, kindness, love, understanding and wisdom were always present.

We knew that whatever situation we faced, Fr. Peter was always ready to take time to help us to see a way through. Not always to be able to solve our problems - but to help with acceptance and to see God's plan even in the most unhappy situations

During his time as our Parish Priest, Fr. Peter has changed many lives for the better and we will be forever grateful for that. Fr. Peter was then presented with a Book of Memories from the Parish and a cheque.

### And welcome to Fr Gabriel...

We know that we have not said a final farewell to Fr. Peter as he remains as a member of the community at Douai Abbey. We are very happy that we will continue to be served by a member of the Benedictine community as Fr. Gabriel Wilson begins his ministry as our new parish priest.

Fr. Gabriel has been at Douai since 2008. He originally hails from Harrow in North London, which, he points out, is twinned with Douai, France! Before joining the monastery, Fr Gabriel was a secondary school teacher for eighteen years, teaching English, and becoming a Head of Department as well as an Advanced Skills Teacher. The latter role took him into training teachers.

Fr. Gabriel's interests include keeping poultry and beekeeping. He especially enjoys catching swarms and has caught four this year to add to the Douai apiary. We trust that he will find his new parishioners a friendly bunch with very few stings!

May God bless Fr. Gabriel in his new ministry, along with Fr. Benjamin who will continue in the role of Assistant Parish Priest.





- Osteopathy & Cranial Osteopathy
- Podiatry & Chiropody
- Sports & Remedial Massage
- Acupuncture
- Reflexology
- Counselling - Adults & Adolescents
- Hypnotherapy & NLP
- Thai Yoga Massage
- Homeopathy
- Nutrition

Some of the conditions we treat at the Centre:

Back Pain Headaches Neck Pain Sports Injuries Foot Problems Sciatica  
Muscle Tension Whiplash Smoking Cessation Weight Control Stress  
& Phobias Dietary advice for IBS

Visit our website to see what else we can treat [www.thealewellbeingcentre.co.uk](http://www.thealewellbeingcentre.co.uk)



You're not normal. No one is. We are all different and we're all wonderfully unique.

At The Movement Clinic we pride ourselves on helping everyone, young and old, find a way to move more and feel better.

We don't do gimmicks or mysterious gadgets, we don't make outrageous claims, we don't offer quick-fix promises, fad diets, or celebrity exercise regimes.

We rely on decades of collective experience and expertise to establish what works for you.

So whether you're injured, in pain, stressed, overweight or just tired of doing the same thing over and over again and getting the same disappointing results, give us a call and find out how we can help.

Personal Coaching • Weight Loss • Strength & Conditioning • Running Technique • Injury Prevention & Rehabilitation  
Corrective Exercise • Physio-led Pilates • Specialist Pilates for People with Mobility Issues • Yoga • Massage • Injury Treatment  
Strapping & Taping • Neurological Physiotherapy for Adults and Children

[www.themovementclinic.co.uk](http://www.themovementclinic.co.uk) • 0118 327 9405 • [info@themovementclinic.co.uk](mailto:info@themovementclinic.co.uk)

The Boathouse  
Dental Surgery

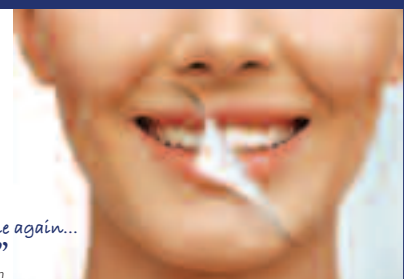
[www.boathousedental.co.uk](http://www.boathousedental.co.uk)

Tel: 01491 872394

Are you someone  
that hides **your** smile?

Let us **reveal** your smile.

"Never thought I'd smile again...  
...but now I can."  
Martin



High Street, Goring on Thames, Oxfordshire RG8 9AB

Email [reception@boathousedental.co.uk](mailto:reception@boathousedental.co.uk)

Call 01491 872394 to book a consultation



# Berkshire's Exclusive Skin Health & Laser Clinic

## Radiant skin, the natural way...

... can be yours with our non-surgical laser facelift and bespoke skin health programs, uniquely developed using science and technology from around the world.

As a specialist laser and skin clinic, we are here to help you.

- Non-surgical laser face & neck lifting
- Acne & rosacea specialists
- Pain-free laser hair removal
- Wrinkle & skin remodelling
- Tattoo removal
- Emsella for incontinence
- Pelvic floor rehabilitation
- Non-surgical blepharoplasty



**Andresa Aesthetics Exclusive Skin Health & Laser Clinic**  
Tel: 01635 800183 | [info@andresa.co.uk](mailto:info@andresa.co.uk) | [www.andresa.co.uk](http://www.andresa.co.uk)  
Lower Wasing Barn, Wasing Lane, Nr Woolhampton RG7 4LY



**REBECCA KINGWELL**  
FINANCIAL PLANNER

Comprehensive, bespoke, financial advice & planning



Rebecca Kingwell  
BSc (Hons), DipFA

Would you like to start making better provision for your future and retirement?

Do you need help understanding your existing pension arrangements?

I offer specialist advice on pension planning, investment planning, savings, tax efficiency and life and critical illness protection.



e: [rebecca.kingwell@sjpp.co.uk](mailto:rebecca.kingwell@sjpp.co.uk) t: 0330 053 6797

[www.rebeccakingwell.co.uk](http://www.rebeccakingwell.co.uk)

Oxfordshire · Berkshire

Rebecca Kingwell Financial Planner is an Appointed Representative of and represents only St. James's Place Wealth Management plc (which is authorised and regulated by the Financial Conduct Authority) for the purpose of advising solely on the Group's wealth management products and services, more details of which are set out on the Group's website at [www.sjp.co.uk/products](http://www.sjp.co.uk/products)

## KJ Cosmetics — BEAUTY CLINIC —

Laser Hair Removal  
&  
Skin Rejuvenation

Semi-Permanent  
Eyebrows | Eyeliner

Lash Extensions  
Lash Lift & Tint

Facials  
Dermaplaning  
Skin Peels

Massage  
Manicure



Free Parking | Free Consultation  
Weekend & Evening Appointments

[www.kjcosmetics.co.uk](http://www.kjcosmetics.co.uk)  
[kj@kjcosmetics.co.uk](mailto:kj@kjcosmetics.co.uk)  
0115-974-4471

Howies Wood Farm  
Bedford, MK7 4DT

## PUPPY AND DOG TRAINING



**ONE TO ONE TRAINING  
IN YOUR OWN HOME  
WORKSHOPS AND CLASSES**

Contact: Sandra Emmons  
Telephone: 07973 272911  
Email: [sandra@happipup.co.uk](mailto:sandra@happipup.co.uk)  
Website: [www.happipup.co.uk](http://www.happipup.co.uk)



## HIRING NOW

### JUNIOR TO CREATIVE DIRECTOR HAIR STYLISTS

- + Opportunity to work alongside an award winning team in a brand new establishment.
  - + Salary competitive with benefits
  - + Permanent
  - + Full and Part time positions available
  - + Receptionist
  - + Must be a motivated, passionate and confident individual with an eye for detail
  - + Excellent customer service is essential
- Email your CV along with a covering letter to [recruitment@virgobeauty.co.uk](mailto:recruitment@virgobeauty.co.uk)



**VIRGO BEAUTY**

BULFORD

## Cosmetic & Laser Skin Clinic



- laser hair removal
- lines / wrinkles
- crows feet
- lip enhancement
- microdermabrasion
- skin tightening
- brown spots
- skin peels
- mole, cyst, skin tag
- tattoo removal
- facial / leg veins
- Vaser - fat removal
- eye lid surgery
- dermaroller
- underarm sweating
- acne

*Professional, Caring and Confidential*

Treatments for Men and Women

The  
**CHILTERN** *medical clinic*

Dr N. Munnelly Medical Director



60 Broad Street • Reading • RG1 2AF  
1 Thames Court • High Street • Goring • RG8 9AQ

**HIGHLY SKILLED DOCTORS RENOWNED FOR EXCELLENCE**

**Call 01491 873 989 or 0118 958 2016**

**[www.chilternmedical.co.uk](http://www.chilternmedical.co.uk)**





# LET'S UP THE PACE

New classes now added for September!



## BRADFIELD BENEFITS

- ✓ No Joining Fee
- 🔄 Flexible Membership
- 👤 1-2-1 Personal Training
- 👤 Fitness Classes for All Levels
- 👨‍👩‍👧 Family Friendly
- 📍 Stunning Location
- ❤️ Cardio & Resistance Gym
- 🏊 25 m Indoor Swimming Pool

\* No contract or joining fee



BRADFIELD COLLEGE SPORTS COMPLEX

email: [frontdesk@bradfieldcollege.org.uk](mailto:frontdesk@bradfieldcollege.org.uk) tel: 0118 964 4600



[www.bradfieldsportscomplex.co.uk](http://www.bradfieldsportscomplex.co.uk)





# Pangbourne Club

NEW  
MEMBERS  
WELCOME



## Facilities

- Air Con throughout
- 3 full size snooker tables
- Pool Table
- 2, 2mx2m projector screens and large TV's
- BT Sports
- Conference Facilities
- Function Room for hire with kitchen facilities and licenced bar

## Entertainment

- Live Entertainment every second saturday of the month
- Bingo every Thursday evening
- Jazz 1st Sunday evening of every month (fee applies)
- Regular exercise classes
- Weekly raffles

LOWEST  
DRINK  
PRICES  
IN THE  
VILLAGE



## Teams

- Cribb's teams
- Snooker Teams
- Table Tennis



## Objectives

PWMC is run as a non-profit making organisation by its members through an elected committee, which provides a social facility for residents of Pangbourne, the surrounding area and for people working in the village.

## Pangbourne Club

Rosewood Hall, Whitchurch Rd, Pangbourne, Reading, RG8 7BS

t: 0118 9842885

e: [info@pangbourneclub.co.uk](mailto:info@pangbourneclub.co.uk)

Visit us on Facebook

[www.pangbourneclub.co.uk](http://www.pangbourneclub.co.uk)

## AUTUMN TENNIS AT PANGBOURNE TENNIS CLUB

A very successful summer season is drawing to a close, but there's lots to look forward to for the autumn!

Along with the record number of players this summer (both adults and juniors), the highlight of this year has been the refurbishment of the courts. The resurfacing of the main court was completed on schedule by the middle of July and all three courts are now in excellent condition.



*Runners-up (l to r): Fiona Carney and Kate Wright with committee member Rob Latimer.*

### SUMMER TOURNAMENT

To inaugurate the new court, the club held a fun American Tournament on the 18th July, the hottest day of the summer so far. Twenty four members took part in the mixed doubles round-robin format of short matches, playing with different partners each round. The tournament culminated with the leading four players contesting a very close final.



*Winners Louise Shearer and Sam Hardy with Rob Latimer and Chairman Richard Raynes.*



*The tournament in full swing*

### KEEP PLAYING THIS AUTUMN!

Both adult and junior coaching sessions will be running over the autumn and the very popular box leagues offer the chance of friendly competitive play. Social doubles sessions will continue at the weekends, weather permitting.

From the 1st October, we offer winter membership to new members for the period to the 31st March. It's £20 for adults and £40 for family membership (two adults and all the children in family).

### JUNIOR COACHING IN SEPTEMBER

Junior coaching starts again on Friday September 10th and runs for four weeks until 1st October. It costs £20 for the course for children who are already members. Non-members can join for the rest of the year for just £5. If you have not already registered, email us at [juniors@pangbournetennis.org](mailto:juniors@pangbournetennis.org) as soon as possible.

### THE AUTUMN COACHING PROGRAMME FOR ADULTS

Adult coaching will be running on Sunday mornings and Tuesday evenings. Skills and Drills take place on Sundays from 11.30am-12.30pm and will continue throughout the autumn and winter. There will be two, one hour sessions of club coaching on Tuesdays, at 5pm and 6pm during September.

Places are limited to 12 per session, so don't delay if you are interested! Details are available at <https://pangbournetennis.org/coaching-for-adults> or get in touch at [info@pangbournetennis.org](mailto:info@pangbournetennis.org) to find out more.

### END OF SEASON TOURNAMENT AND AGM: SUNDAY 26TH SEPTEMBER

Our end of season tournament is on Sunday 26th September. This year, we will be offering a free serve clinic with Damian Lane from 12 noon to 1pm along with a fastest serve competition. The fun, friendly and very popular American Tournament will start at 1pm and we will finish the day with refreshments and the AGM at 4.30pm-5pm.

We look forward to welcoming members old and new along with family and friends to the event to round off the season in style. Full details are at [www.pangbournetennis.org](http://www.pangbournetennis.org)

*Pangbourne Tennis Club Committee*

**pangbourne**  
tennis club



## PANGBOURNE HERITAGE GROUP – ‘MEETING PLACES’

After a very long spell when most of us were confined to barracks, we thought it was the right moment to look at how and where Pangbourne people have been meeting up for the last 120 years or so, and to celebrate the return of all our social activities.

The earliest meeting places were the hotels, the Elephant being the first place where the Masons met, and the George. After the break up of the Breedon Estate in 1894, and the subsequent opening up of the village, DH Evans built the Constitutional Hall, and the Pangbourne Working Men's Club was formed. At this time the Parish Council met in the Old Breedon School. The Constitutional Hall being in the village centre was in general use from the early 1900s until that section of Whitchurch Road was developed in the 1960s. It was a large hall with a stage and two dressing rooms. The Pangbourne Literary, Dramatic and Musical Society and the Pangbourne Optimists used it on a regular basis for their productions and concerts. The Drama group produced two plays and a pantomime each year, accompanied by the orchestra. Each would be performed for five nights and an extra matinee. The Hall could seat 200 and the Optimists played for concerts and dances. Many social occasions were held in the Hall. During WW2 the Americans brought the Jitterbug to the village; during the 1920s there were a series of improving lectures by local university professors, and the local school used the Hall for plays, Christmas parties and prize giving ceremonies. Once a year a Flower Show was held.

The Working Men's Club and Institute (Men only at this time) was being used for similar functions: money raising dances, Whist drives etc. It was also where the Pangbourne Band practised. They also had talks and lantern slide shows. The social dances were the only time when ladies were allowed in the Club. Today the Rosewood Hall hosts meetings, discos, parties, jazz evenings and wedding receptions. The second Pangbourne Brownie pack used to meet there until it was disbanded.



*The orchestra on stage in the Constitutional Hall (1930s).*



*The Rosewood Hall 1930s.*



*Ticket from a Village Hall theatre production.*

After the Constitutional Hall ceased to exist, the Village Hall in Station Road took over many of the activities. It was enlarged and modernised over the years, and is now in use for parish meetings, church and volunteer offices, commercial ventures, and many village enterprises including the Friday Market, the WI, Band Practice, Quizzes, Dinners, Exercise classes, Brownie and Guide sessions amongst other activities.

There was a hall in Polytechnic Lane, which intersects the two ends of Horseshoe Road. At various times it was Miss Grist's school, a place for social gatherings, an evening school in technical subjects (hence the name of the lane) and also the famed Bijou cinema of which you will learn if you read the Heritage book.

The Congregational Chapel in Reading Road had a hall to the rear. It was used in WW2 as a canteen for soldiers based here while undergoing training on the river. At other times it was a Sunday school for the Congregational church, a playgroup and also another venue for social occasions. It was demolished as unsafe, and eventually when the chapel was pulled down to make way for housing, became part of what is now known as Saxon Place.

St Bernadette's Church in Horseshoe Road has a hall which can be hired. The Lunch Club met there for many years and it is hoped the Monday Tea and Cake Club can resume soon to cater for older residents who otherwise lack social contact.

The Dolphin Centre by the river was originally built for the rowing and football clubs. Now it performs a valuable service for many river activities, especially for young people. There are rooms for office and business meetings, weekly Pilates, Yoga, Tai Chi, Zumba and Art groups. These rooms can be hired for one off occasions as well.

Pangbourne Library was originally housed in the Constitutional Hall and later the Village Hall, with WH Smith providing an alternative. Since the 1970s, when the Fire Station moved from Reading Road to Horseshoe Road, a permanent structure was built, which serves mainly as a Library, but has four computers, information booklets, and has Craft sessions, Story telling groups, a Book Club, and was used by the Heritage Group when researching information for our book.

Come September, many of the activities that have not yet been able to restart will be using the many meeting places on offer. The Heritage Group hopes to meet up with members and friends who have been away from social get togethers at a coffee morning in the Dolphin Centre on Wednesday 15 September from 10 to 11.30am. We have ordered more copies of the book *Shops Trades and Businesses of Pangbourne*, which will be available for sale. We are very grateful to the Rhubarb Tree, Garlands, the Cheese Shop and the Library who have been selling copies for the last few months, and helped us to publicise the book.

*Jane Rawlins and Lesley Crimp*





## CHAIRMAN'S MESSAGE

"... This season's Programme includes our usual regular competitions for colour prints, monochrome prints and digital projected images and we also take part in a number of competitions against other Camera Clubs in the Chilterns Association.

In addition to this, I have booked some top level speakers who are experts in their field of photography. The highlight of the year will be the return of Tom Way who will show his unique style of capturing wild life and natural history images in November.

We also have some of the leading landscape photographers in the Country who will be showing their images as well as an insight into the world of drone photography which will include a practical demonstration.

... (WHCC) is set to further enhance our reputation as one of the leading Camera Clubs in the area. I hope you will enjoy all there is on offer during 2021-22."

*Alan Copeland LRPS APAGB*

To view Alan's message in its entirety visit our website on [www.whitchurchhillcameraclub.co.uk](http://www.whitchurchhillcameraclub.co.uk). See also club membership details – annual/seasonal or single 'on the night' fees and our Gallery – members show off their favourite images, their style ...

---

## AGENDA (WEDNESDAYS)

---

### SEPTEMBER

**8th, WELCOME BACK** – We are back in the Village Hall, Manor Road, Whitchurch-on-Thames after a break of some 18 months. Tonight, we will be enjoying each other's company once again, viewing a selection of on screen images and with a cup of Steve's tea it will make for a very good evening ... indeed ...

**15th, STORIES BEHIND THE PICTURES** – We welcome back Cliff Hide who shows us some of his favourite press photos from his career to date and the how, why and circumstances that put him in the right place at the right time. The stories range from the humorous, light hearted to the deeply tragic. [www.cliffhide.com](http://www.cliffhide.com)

**22nd, OUTDOOR PHOTOGRAPHY** – Matthew Cattell is an award winning photographer who gained the Landscape Photographer of the Year Award in 2016. In tonight's talk he will cover all aspects of outdoor photography, from panoramic vistas down to the details and behaviour of the wildlife on our doorstep. [www.matthewcattellphotography.com](http://www.matthewcattellphotography.com)

**29th, SELECTION EVENING** – A practical evening where all members have the chance to vote for their favourite prints and digital images to be used in future competitions against other Camera Clubs.

### OCTOBER

**6th, DIGITAL COMPETITION No 1** – We are expecting a large entry for our first open competition tonight which will be judged by Kevin Day from the Stoke Poges Photographic Club.

**13th, STILL LIFE, ALLEGORY, VANITAS AND MOMENTO MORI** – A fascinating title for tonight's presentation when Rojer Weightman will give us a history of and the differences between still life and its variants in Art and Photography. [www.sciroccophotographic.com](http://www.sciroccophotographic.com)

**20th, PRINT COMPETITION No 1** – Once again, a large entry is expected for the first Open Print Competition which will be judged by Micki Aston CPAGB McloJ from the Windsor Photographic Society.

**27th, LYKIA** – Mark Buckley-Sharp ARPS APAGB CPAGB and Judy LRPS APAGB CPAGB present another study of Turkey, this time looking at the region of Lykia where they explore a variety of locations, some very remote, some less so but rarely visited and some just simply not noticed by the typical visitor [www.mjbsharp.me.uk](http://www.mjbsharp.me.uk)

### NOVEMBER

**17th, A YEAR IN JAPAN** – R. Gillams provides additional insight into our recent Japanese immersion.

**24th, THE ART OF WILDLIFE PHOTOGRAPHY** – Don't miss this, Tom Way comes highly recommended.

---

Join us at the refurbished Village Hall, Manor Road, Whitchurch-on-Thames 8pm Wednesday evenings from September to June ... WHCC you're welcome!

*Lyn Higgs*

## PANGBOURNE YOUTH FC TEAMS RARING TO GO FOR THE 21/22 FOOTBALL SEASON

As if England getting to the Euro 2020 final wasn't inspiring enough, our local youth teams ended last season in celebratory mood too with several finishing top of their division or reaching the cup final.

Congratulations to the U12 Piranhas who were crowned BYDL Division 4 champions and the U12 Panthers



U12 Piranhas

who finished the season top of BYDL Division 1. A great achievement by players and coaches alike and an inspiration to all PYFC teams.

A huge well done also to the U9 Hurricanes and U12 Panthers who played in their respective BYDL competition cup finals. Although they didn't win both teams showed great spirit and a renewed determination for the season ahead.



U12 Panthers

With all our teams raring to go for what we hope will be an un-interrupted season, several of them are looking for more players. In particular: U14 Pumas (school year 9), U13 Panthers and Piranhas (school year 8), and U10 Hurricanes (school year 5). If your child has been inspired by the recent football successes and is interested in joining PYFC, please get in touch.

The Club is also seeking kit sponsors so if you run a local business and want a great advert that's seen by many, whilst helping out local children then why not sponsor a PYFC team?

For all enquiries get in touch via the website at [www.pangbourneyouth.co.uk](http://www.pangbourneyouth.co.uk) or visit our Facebook page for updates and team information [www.facebook.com/PangbourneYouth/](https://www.facebook.com/PangbourneYouth/).

Pangbourne Youth FC is grateful to the following businesses for their sponsorship:



## Rotary Club of Pangbourne UK

\*\*\*PRESS RELEASE\*\*\*

**IT'S AN INCREDIBLE £636,983!**

Rotarians in the Thames Valley District raised this incredible sum in lockdown. Pangbourne Rotary Club managed to donate about £22,000 of which nearly half came from our voluntary donation of our "Dinner Money" (continuing to pay for our weekly meals despite the fact that we had to meet on ZOOM).

We have all been severely restricted with our fundraising activities during this period, and nobody could have imagined the value of our donations or the significant effect we would make to so many very deserving beneficiaries under such challenging times.

We resumed started meeting face to face and have just completed our first fundraising event – The Pangbourne Art Exhibition which was highly successful.

Anyone interested in joining the Club and to participate in our meetings and fund-raising activities please contact [membership@pangbourn Rotary.org.uk](mailto:membership@pangbourn Rotary.org.uk).

Website: [www.pangbourn Rotary.org.uk](http://www.pangbourn Rotary.org.uk)

Facebook: @rotaryclubofpangbourne Twitter: @PangbourneRot

## WHITCHURCH BRIDGE CLUB

We are a small friendly bridge club which meets fortnightly on a Wednesday afternoon to play Chicago Bridge in the Whitchurch Village Hall. You do not need a partner, just come along and join in. We enjoy a short tea break during which time you can get to know the regular players.

If you are interested in coming along please contact me on [kenya1952@gmail.com](mailto:kenya1952@gmail.com) or call me on 07855 830 140.





## PANGBOURNE ART GROUP

We were hoping to reopen the Art Group again on Wednesday 23rd June. Unfortunately, this was delayed as all restrictions were not lifted until the 19th July. Finally 11 of us came back to the hall on 21st July on a scorching hot summer's day.

It was lovely to see face to face members that we had only glimpsed on Zoom or not seen since March 2020. It was a very enjoyable afternoon with everyone really happy to be painting together once more in a very convivial atmosphere. The following week (Wednesday 28th) even more members came with two potential new members joining us.

At the weekend of 31st July/1st August several of our members submitted paintings to the Rotary Art Exhibition, with some successfully selling their art works.

Our Committee has now been busy gearing up for our own Art Exhibition which will be taking place on October 15th-16th. This is an opportunity for our members to showcase their art work that they have been engaged in for the last two years as last year's Exhibition was cancelled due to the Coronavirus.

Our Webmaster has been busy updating our PAG website ([pangbourneartgroup.com](http://pangbourneartgroup.com)) to reflect these changes, with all the up to date information.



We are planning another of our Plein Air painting days to Henley on August 19th, which weather permitting should be a great opportunity to do some outdoor painting and have a nice lunch afterwards. We hope to continue with these throughout the summer.

If you are interested in joining us we paint in the Village Hall every Wednesday 1-4pm. Contact Debbie Hildred (Chairman) on 07591 505707 or Liz Ford on 0118 9843359, also our website [pangbourneartgroup.com](http://pangbourneartgroup.com)



On Saturday 17th July the sun shone spectacularly on our scaled-down Rowing Only Regatta. A month previously had seen us regrettably have to cancel all the shore-side entertainment that was planned and exclude spectators from watching the racing. However, things were swiftly adapted to enable a rowing-only event to be held at our boat club, with racing on our reach below Gatehampton Bridge.

A few crews fell victim to the Pingdemic but there was still a great turnout with 26 crews of four competing in three divisions. Without fail, every rower came off the water smiling, having enjoyed the adrenalin rush of a

300m dash (with a bit of splash in some cases). We hope to have encouraged some potential new club members, having been bitten by the rowing bug.

Of course, even in its reduced format the day could not have been such a resounding success without the help of a magnificently efficient Regatta Chairman, in the guise of Nick Josephy, and an army of willing volunteers who gave up so much of their time. Our thanks also goes to the landowner and various suppliers for their understanding in not applying cancellation charges. We will probably hold a regatta of some sort next year but we don't know the format yet.

*Goring Gap Boat Club . . . Get on Board . . . Recreational Rowing for the Community*





## ADVENTURE DOLPHIN

We are now returning to a new normal in most of our activities, so we thank you for all your support over the past difficult months.

Our aim has been to offer local communities – young people and adults alike, the opportunity to experience the great outdoors through a series of development courses and club membership, run by experienced qualified members on a voluntary basis. This has been met well with courses being run through our volunteer team on a Wednesday and Tuesday evening in Canoeing, Kayaking and stand up paddle boarding. All the courses have been popular and we have had to operate a waiting list due to the need to double up our leaders to ensure the courses could continue in these Covid times.

Those people who have joined us have shared that Paddling (in a boat, standing up on a board!) regularly is a great way to keep fit and as a club we welcome people of all ages from about eight years and up, whether you are already a paddler or would like to give it a go for the first time. As your confidence and enjoyment grow you may wish to join us on an organised trip such as a paddle down The Dordogne or the upper reaches of The Thames.

Pangbourne Canoe Club (PCC), the racing section of Adventure Dolphin, meet regularly throughout the year on a Saturday morning and Tuesday evenings and have just competed at the National Canoe Marathon Championships. This year a Gold Medal was won by Vicky Metcalfe and Liz Murnaghan in the ladies over 60 C2 class. Vicky then followed this up with a Silver medal in the Women K1 class, a great result for the club and of course Vicky. Following on from the Olympics if you would like to try and Follow Liam Heath in a racing Kayak or try a white water slalom kayak why not give it a try drop an email to [info@adventuredolphin.co.uk](mailto:info@adventuredolphin.co.uk).

Why not come and have a look at some of our Olympic team in action on Sunday 12th September when we are running our annual canoe marathon. Racing starts from 10.00am and the paddlers can be seen racing from Pangbourne to Purley, the higher divisions will be doing three circuits of the course. The starts can be quite spectacular with over 20 boats on the start line.

### WORK AND MEETING SPACES

During the lockdown we have had the building decorated and changed a little. The big change for us is it will allow members of the community to be able to hire space in our office and meeting rooms. So if you are still encouraged to work at home you could do a couple of days with a change of scenery in our office, or if you have a small meeting arranged you would be able to use our meeting room during the day time. If you feel this may be of interest to you please contact Angela at [bookings@adventuredolphin.co.uk](mailto:bookings@adventuredolphin.co.uk).

### COMMUNITY GROUPS

Our regular community groups are returning in September, so please look in the local press to find details

of classes and times so you won't miss out. Classes in Pilates; Zumba and painting are proving popular.

We are always on the lookout for Community groups who would like to meet on a regular basis in our building during the day time and at weekends. The Access to the building is good and we do have a lift to the first floor. A selection of local groups using us include: Pilates and Yoga classes; Art and Painting groups; Fitness training; Scouts, Cubs and Beavers. If your group is interested again contact Angela at [bookings@adventuredolphin.co.uk](mailto:bookings@adventuredolphin.co.uk).

### DUKE OF EDINBURGH'S AWARD

We are about to recruit for our new group's starting in September. If you are interested or know someone who is interested in joining us to complete the DofE Bronze, Silver or gold, we are holding an open meeting on Monday 20th September at 7.30pm at the Centre.

The Bronze group have completed their full Award. The Silver group have completed their practice expedition and are due to complete the qualifying expedition at the end August. The Gold group have decided on completing their expedition next summer so still time to join them.

If you would like to join us and have some fun and meet new friends please contact us at [dofecoordinator@adventuredolphin.co.uk](mailto:dofecoordinator@adventuredolphin.co.uk). To do Bronze the minimum age is 14 years old or in year 9 at school; for silver 15 years old or in year 10 at school; for Gold you need to be 16. More details can be found on our website [www.AdventureDolphin.co.uk](http://www.AdventureDolphin.co.uk) or by looking on the DofE website: [www.DofE.org](http://www.DofE.org).

If you would like to come along on the 20th September and meet the team please contact: [dofecoordinator@adventuredolphin.co.uk](mailto:dofecoordinator@adventuredolphin.co.uk) to book your place.

### CLIMBING

This year climbing was featured in the Olympics for the first time and no doubt created much interest, be it the speed climbing, bouldering or lead climbing. As restrictions are being changed we are planning to reopen the Wall and resume our Club and courses in September. The delay in reopening our Wall was due to the current social distance regulations and the actual size of our climbing area. If you are interested in climbing please go on to our website where up to date information will be available.

### PADDLESORT

Our clubs are now been able to restart, the group meet on a Saturday morning and Tuesday evening for joint training and for specific training at other times during the week. Our courses on the water finish in September when the recreational and social paddling groups begin, these meet on a Sunday morning and a Tuesday evening, when the groups go for a short paddle.

## EVENING COURSES ON THE WATER

Evening courses in Canoeing, Kayaking and stand up paddle boarding have been going well. These start operating in early June after the summer half term when the regulations eased. We have only been able to book groups of up to five people, so your patience has been appreciated. For more information and to book on a course please see our website [www.adventuredolphin.co.uk](http://www.adventuredolphin.co.uk).

<https://adventuredolphin.co.uk>

## DOLPHIN COMMUNITY HUB

September is always 'Back to School' but this year it's also 'Back to Work' or 'Back to Working from Home'?

Over in the Dolphin Community Hub we can offer you a different office environment with a warm welcome over in the Dolphin Business Hub. We're a small, friendly shared workspace, designed to provide a comfortable office environment away from home for the small business owner, self-employed or home worker.

We've got serviced desks, 'Hot desks' and great meeting/ training room spaces for hire on an hourly, daily, weekly or monthly basis. Best of all we've got some great introductory prices for SEPTEMBER 2021.

- Are you tired of working from home but don't want the commute?
- Do you need an extra desk space but just on an ad-hoc basis?
- Are you 'zoomed' out and want a small Covid friendly meeting?
- Are you a local business who needs a meeting/training room or some extra space?
- Do you have a great workshop idea, if only you had the space?
- Do you want a desk with a view?

If you say a big YES to any of the above, you may want to come and have an introductory visit (by appointment) around the Hub in the Adventure Dolphin Centre by Pangbourne Meadows.

Contact Angela on 07860 274162 for more information.



## PANGBOURNE ALLOTMENTS

It has been a difficult year weather-wise for us on the allotments: extremes of cold, dry, wet and excessively hot weather have tested our skills to the limit. In spite of that, an abundance of fruit and vegetables has been harvested. The "leakage" of strawberries (whether by birds or by humans) was less this year than last, and the tomatoes are finally starting to ripen after a slow start.



We were sorry to lose both John White and Matt Wain from the committee this year, but Fiona McLachlan (a new allotment-holder) will be joining us, and Claire Middleton has kindly consented to be our Chairman – a post that has been empty since before the pandemic. If anyone else would like to stand for the PAA, we'd be delighted to hear from you.

## NATIONAL ALLOTMENT SOCIETY OPEN MORNING, 14 AUGUST



This was a success with a lot of people coming for a look-around on a warm dry day. John White had a constant stream of people interested in bees and bee-keeping, and two people have joined the waiting list for an allotment. The produce stall raised £112.80.

Many thanks to all who contributed and helped.

The annual barbecue for all plot holders, family and friends will be on Saturday 4 September from 5.30pm on the allotments, when we hope for good weather and the usual social get-together: a great opportunity to get to know fellow enthusiasts and some delicious food to share.

There are some spectacular dahlias around the allotments – most of them visible from the public footpath, if you care to take a walk.



To go on the waiting list for an allotment, please apply to the Parish Council at [pangasstclerk@gmail.com](mailto:pangasstclerk@gmail.com), or phone Jo Power on 0118 984 5898.



# LOCAL CLUBS

---



## HAPPY 100TH BIRTHDAY TO PANGBOURNE WI



After months of wondering whether we would be able to celebrate our centenary in real life (rather than on a screen!), 24 members of Pangbourne WI finally came together for our 100th birthday tea party on Tuesday 20th July in Pangbourne village hall. It was wonderful to meet with friends who we had not seen for so long and to catch up with all our news.

Our President, Sue Smith, began by welcoming us and said she had been so looking forward to seeing us all again. As she had taken on the role in March 2020, one week before the first lockdown, this was the first meeting she had been able to host in person. Although she had been very busy during this time, in true WI style, keeping us all entertained with her delightful monthly newsletters, organising committee meetings and interesting talks on Zoom, she had been longing for the time she could actually talk to us properly rather than remotely. She began by presenting the Durham Stokes cup, which is awarded annually for the best flower (which this year had to be a photo) to Pat Jackson, with an M&S voucher to the runner up Liz Ford. She explained that, now we can meet in person, it was hoped that a working group could be formed with the aim of creating a new Pangbourne WI banner in honour of our centenary. The original design, created in 1927, can still be seen on the wall in Pangbourne Village Hall.



Sue went on to say that she had been going through our archives, which had proved to be a fascinating journey back through time over the past 100 years. The first meeting had taken place almost 100 years ago to the day on 19th July 1921 in the Friends Meeting House (then situated more or less over Greens Butchers shop) at a rental of 5/- per meeting. Mrs Lubbock was elected as the first President. Eighty eight members were enrolled and were entertained by a demonstration of glove making, which proved very popular. The minutes from that meeting show "A most enthusiastic meeting. Demonstrations of glove making very popular. Mrs Menpes loaned a piano. There were violin solos and songs. Room beautifully decorated by Mrs Lubbock's gardener".

Sue then asked our secretary, Margaret Packham, to show us the Pangbourne WI Centenary 1921-2021 photo booklet she had spent many hours researching and producing during lockdown. Margaret began by saying that there was a wealth of material in the archives, and this fascinating booklet gives an insight into the way in which women lived from the 1920s onward. It was interesting to note that, although our lives have changed in so many ways, our members still enjoy many of the same activities (although possibly not glove making!).

The war years had proved particularly challenging and, although meetings had to be suspended, the WI played a vital role in growing and preserving food, looking after evacuees and knitting for the troops. The booklet charts key points in our history and includes many interesting photos of members, past and present. One of our members was a code breaker at Bletchley Park during the second world war, and another was crowned "Miss Great Britain". We have members who have been a magistrate, a teacher, a nurse, a scientist, an actress and an Olympic level athlete, and some of our members have been Pangbourne Millennium Award winners.

Margaret had also included a section on the Covid pandemic and how it had affected everyday life, as she felt that it formed such an important part of our history. Indeed, apart from the war years, it was the only time the WI had not been able to meet.

Every member was given a copy of the booklet and Margaret was presented with a bouquet of flowers as a huge thank you for the many hours she had spent producing it. We all agreed that this would form an important historical document for the village.

Members then shared a delicious afternoon tea, including a special birthday cake, and enjoyed socialising with their friends once more. Many agreed that it felt as if the last 18 months were but a distant memory – long may it last!

If you are yearning for some social contact again, why not come and join us? We are a very friendly group of ladies, and visitors are assured of a warm welcome. If you would like to know more, please contact our President Sue Smith on 0118 983 3258 who would be delighted to hear from you.

*Judy Schurer*





## PANGBOURNE TWINNING ASSOCIATION

It was with great sadness that we heard on 3 July of the passing of Alison Hill. She had been ill with cancer for rather longer than she wanted most people to know, and she was as full of life and vigour as her condition would allow right to the end. Twinning was only one of the fields in which she was active.

Although Alison was only Chair of our Association for a brief period, from 2019 to earlier this year, she achieved much in this time. In particular, she presided over extensive research into the background to the setting up of our twinning with Houdan, which had been obscure. On the basis of this information she expended much energy in endeavouring to consolidate our relationship with the Parish Council, and updating our constitution. She loved France and all things French, and regularly attended the Ferryboat French conversation meetings. Through her contacts in the village she was constantly working for the well-being of Pangbourne Twinning, and she will be sorely missed.

### ASSOCIATION ACTIVITIES

We were delighted to be the first organisation since lockdown to offer an ever popular **Art Café** coffee morning. With detailed advice and direction from Gill Williamson of the Art Café and careful planning by the Twinning Committee, we were able to provide socially distanced tables, an outdoor area for our customers and a convivial morning for all. The event was staffed by a team of Twinning members who did an excellent job in providing tea, coffee and cake for the residents of Whitchurch and Pangbourne. We would like to thank all our helpers and those who supported our event. For our Association, it was a welcome return to the rhythms of everyday social life and a joy to meet up with old friends.



*The Art Café*



*Walk and Lunch Twinners*

On 1 August a group of Twinners met at The Six Bells, Beenham for a **Walk and Lunch**. A gentle walk in the Douai and Beenham area, guided by John Steele, was followed by an excellent Sunday lunch. Thank you to The Six Bells for their flexibility due to the ever-changing weather.

The event was a variation on the **Marcher et Parler** walks organised by Lauren, involving a stroll in the countryside during which the chat is mainly in French. Further information on this popular initiative is available via our website [pangbourne-twinning.org](http://pangbourne-twinning.org) or our Facebook page <https://www.facebook.com/pangbournetwinning>.

Steve Harris has provided the details below for our first **French Film Night** of the winter season. However, the date of the screening remains subject to any changes in government guidance.

**Sunday 31st October 2021** – *School of Life* ('L'École buissonnière'), 2016

More properly translated as 'Playing Truant', this film by Nicolas Vanier is about a young boy, adopted by a gamekeeper, who befriends a poacher on a country estate, but there is more to this story than meets the eye.

Do join us for this, the first film evening of the season. There are more films to come on the last Sunday of each month at Pangbourne Village Hall (see page 9 for proposed list of forthcoming films).

*À bientôt!*

*Nigel Suffield-Jones and Lauren Kilsby*

## PURLEY HORTICULTURAL SOCIETY

**TRADING SHED** – This is now open from 10-11am (Saturdays only).

**SUMMER SHOW** – We are hoping to hold this on Saturday, 11th September, but this is dependent on the Memorial Hall being available due to covid 19 restrictions. Please check website.

**TALKS** – Speakers have been booked for October 20th and 17th November meetings, but please check the Society's website ([purleyonthames.org.uk/PHS](http://purleyonthames.org.uk/PHS)) for more details.

*Marion Dabbs – 9422349*



## THE IMPORTANCE OF FRENCH CINEMA

PANGBOURNE TWINNING ASSOCIATION



Why do we show French films in Pangbourne? For many years, the Twinning Association has screened French language films in, latterly, the village hall, and audiences for our Sunday evening shows were consistently exceeding forty attendees before the pandemic forced us to take a break.

The answer may be to do with Pangbourne's close ties with Houdan, our twin town, or the large interest in our activities domestically, but I believe it is also connected with the wider acceptance, in recent years, of watching foreign language films with subtitles (thank you Scandi-noir!), and, more importantly, with the international importance and influence of French cinema.

The history of film in France is long, complex and illustrious, and it is entwined with film in many other countries, including the UK. I will attempt to scratch the surface.

During the last fifteen years of the nineteenth century, there was extraordinarily intense activity around the world in the new development of moving pictures. While it is not possible to ascribe the invention of cinema to one source, it is generally accepted that Louis and Auguste Lumière's Cinématographe was the machine which brought together several earlier developments, and became, on 28th December 1895, the first public and paying projection in history, one of the most famous screenings being *L'Arrivée d'un train en gare de La Ciotat* (*The Arrival of a Train at La Ciotat*).

It proved a sensation, and demand for this new entertainment prompted the development of film studios to produce new films. One of the first and most important entrepreneurs to organise a studio was Georges Méliès, who produced many new films (most famously *Le Voyage dans la lune*, 1902). *Trip to the Moon* displays to good effect some of the many special effects which Méliès also invented.

France became the first country to organise its own film industry and to assert cinema as an art form, with films shown at music halls, theatres, fairs, cafés etc. Most prominent among the businessmen who developed the means of distribution and production are names which may resonate with older picture-goers in Britain: Charles Pathé and Léon Gaumont. Their production companies crossed the Channel and greatly influenced film and newsreel production and distribution in this country.



*Marius*, part of the *Marseilles Trilogy*.

The golden age of French cinema was during the 1930s, after the adoption of the invention of talking pictures which originated in Hollywood, California. Film-makers became famous for all-time classics such as *La grande illusion* (*The Grand Illusion*, 1937), Jean Renoir's anti-war tale of a prison camp, Marcel Carné's *Le jour se lève* (*Daybreak*, 1939) and Jean Vigo's *L'Atalante*, 1934. Renoir (son of Pierre-Auguste Renoir, the famous painter) made *La règle du jeu* (*The Rules of the Game*, 1939) about French society, which today regularly tops lists of the greatest films of all time. Often rooted in war, economic depression, social commentary and the difficulties of daily life, these films were part of the industry's strong links with the real world, and also the arts and literature. The famous writer Marcel Pagnol made his revered *Marseilles Trilogy* during this period. The films of this time also gave rise to some of the great film stars such as Jean Gabin and Arletty.

The latter starred in *Les enfants du paradis* (*Children of Paradise*), directed by Carné, which was made over several years under the noses of the Nazi occupying forces and finally released in 1945. It is another film which regularly tops critics' lists of greatest ever films, and it is a period piece, based in theatre and literature. Many films produced in this period had to escape censorship, or were overseen by the Nazis to support their cause. Often, film-makers attempted to subvert this by using allusion or subtle references which were not obviously anti-occupation or pro-French.

The occupation cast a long shadow over post-war France and many films concerned themselves with this period, some undoubtedly classics, e.g. Jean-Pierre Melville's *Le silence de la mer* (*The Silence of the Sea*, 1949) and *L'armée des ombres* (*The Shadow Army*, 1969), about both passive and active resistance to the Germans by this former resistance fighter. As late as 1980, François Truffaut made *Le dernier métro* (*The Last Metro*) about theatre folk in Paris under curfew in the 1940s, and in 1987 Louis Malle made the autobiographical *Au revoir les enfants* (*Goodbye, Children*) about his experiences as a boy at a school harbouring Jewish pupils from the Gestapo.

The most striking development the late 1950s and early 1960s, however, was the arrival of the 'New Wave' ('nouvelle vague') of French Cinema, when several prominent film critics started making their own films, rejecting traditional film-making, and instead using experimental camera shots, music, style and narrative. Famous names such as Jean-Luc Godard, Truffaut, Claude Chabrol and Eric Rohmer were among a band of directors who developed the 'auteur' theory, whereby a director applies centralised and subjective control, equivalent to the author of a play or novel.

This emphasised film as an art form, and was also strongly influenced by American cinema, film noir, Italian post-war film, social and poetic realism, and even famous British directors such as Alfred Hitchcock. International pop culture began to show its influence, for example with the American actress Jean Seberg in Godard's *À bout de souffle* (*Breathless*, 1960), and the use of a Miles Davis jazz soundtrack in Louis Malle's *Ascenseur pour l'échafaud* (*Lift to the Scaffold*, 1958).



Many genres of film travelled to and fro across the Atlantic, such as film noir, crime and caper movies, and thrillers. These were often remade for the respective domestic audiences. Comedy, traditionally, did not travel quite so well, but the French industry was not slow to develop this genre, as can be seen by the singular film-making of Jacques Tati and his famous comedies e.g. *Les vacances de M. Hulot* (*Monsieur Hulot's Holiday*, 1953) and *Mon oncle* (*My Uncle*, 1958). For 30 years, the most successful comedy ever made in France was Gérard Oury's *La grande vadrouille* (known in Britain as *Don't Look Now . . . We're Being Shot At*, 1966), concerning a group of citizens helping an RAF crew escape capture in 1942. The film starred, among others, our own Terry-Thomas, and perhaps proved that the French were able to see their war experience in a lighter way.

France experienced a 'second new wave' of film-making in the 1980s, known sometimes as the 'cinéma du look', when slick, stylish and often provocative films such as *37° 2 le matin* (*Betty Blue*, 1986), and *Les Amants du Pont-Neuf* (*The Lovers on the Bridge*, 1991) by a new generation of directors such as Jean-Jacques Beineix and

Leos Carax, but more traditional film styles made a comeback with the phenomenal success of movies such as Claude Berri's *Jean de Florette* (1986) and *Manon des Sources* (1986), based on works by Marcel Pagnol, and starring Gerard Depardieu and Daniel Auteuil.

Once again, the connection to arts and literature was very strong, as was also shown by the very successful *Camille Claudel* (1988) by Bruno Nuytten, about the assistant to the sculptor Auguste Rodin, who became a sculptor in her own right. The film starred Depardieu (probably the greatest ever French film star) and Isabelle Adjani, and is only one of many about the fine arts, or referencing literature, philosophy or popular arts.

More recently, French film has experienced enormous international success, witnessed by *Le Fabuleux Destin d'Amélie Poulain* (*Amélie*, 2001) by Jean-Pierre Jeunet, which made a star of Audrey Tautou, and is the biggest grossing French film in the USA. In 2011, *L'artiste* (*The Artist*), a homage to the silent film era of Hollywood, won an Oscar for best actor for Jean Dujardin. Later, *La vie en Rose*, a biopic of the legendary singer Edith Piaf, won an Oscar for best actress for Marion Cotillard in 2007.

French cinema continues to be influenced by, and to influence, international culture. It further manages to swap directors and stars across international boundaries, such as Luc Besson and the late Louis Malle, and Juliette Binoche, Charlotte Rampling and Kristin Scott-Thomas.

France has the most successful film industry in Europe (more than three hundred films were released in 2015), and is one of the few countries where non-American films have the biggest share of the market, despite the almost symbiotic relationship over the years. It is also the second largest exporter of films after the USA.

Paris has the highest density of cinema seats by head in the world, and art house and foreign films are shown alongside mainstream features, so that the blockbuster releases do not squeeze out the lower budget and art house features.

There is government support for cinema in France and TV companies such as Canal+ are made to support film production, but French cinema generally caters for a smaller domestic market because of its language and some resistance to subtitles. It therefore has smaller budgets, which mostly rule out expensive settings and special effects, but this means that invention and imagination become paramount.

In my view, part of the charm of French films is that they tend to concentrate on, and are not afraid of, telling stories about the lives of ordinary people; and they also do not shy away from subjects which others might avoid. Anybody who knows a little about French cinema realises that it is very capable of wild fantasy and romance, as well as of being provocative, shocking and transgressive.

After all, the winner of the Palme d'Or at the Cannes film festival in 2021 is *Titane*, a loud and lurid tale of a young girl injured in a car crash who grows up and develops an unhealthy and inappropriate attraction towards automobiles. I might not show that one in Pangbourne!

Steve Harris



The Twinning Association is planning to recommence French Film Nights in October 2021.  
Please see page 9 for the intended list of forthcoming films.





**PANGBOURNE VALLEY PLAYGROUP**  
**PLACES NOW AVAILABLE**

Pre-school childcare for 2 to 5 year olds. 30 hours and shared funding accepted. Morning, lunch club and afternoon sessions are available. We are located in the grounds of Pangbourne Primary School.

(0118) 984 1661  
 pvpg.enquiries@gmail.com  
 www.pvpg.org.uk





**Successful people agree that time is their most valuable asset**



**Personal Assistant Services**

Your Personal Assistant available 24/7

*This includes:*

- » Secretarial and administration
- » Accounts management
- » Concierge and travel arrangements
- » Event management
- » Protocol and etiquette
- » Virtual PA
- » Diary management



**Property and Estates**

Looking after your property so you don't have to

*This includes:*

- » Refurbishment and maintenance
- » Private house management
- » Research and advice
- » Land leasing management
- » Landscaping projects
- » Letting management
- » Vehicle management

**SERVICES TAILORED FOR YOU**

[www.http://obpo.co.uk/](http://obpo.co.uk/)  
 +44 (0) 7768 108 392



WOMEN'S HEALTH

## A breakthrough treatment for complete pelvic floor rehabilitation

Over 40% of women in the UK suffer from embarrassing "oops" moments, also known as urinary incontinence.

**Andresa** is the **FIRST** clinic in the south of the UK to offer **The BTL Emsella, a non-invasive, clinically proven solution.**

- 95% success rate
- Remain fully clothed and seated throughout

- Results in just 3 weeks
- Backed by science - FDA approved



If you would like to find out more about this unique, life-changing treatment or would like to book a complimentary and confidential consultation, call  
 01635 800183 | [info@andresa.co.uk](mailto:info@andresa.co.uk) | [www.andresa.co.uk](http://www.andresa.co.uk)





# THE ORATORY

HMC CO-EDUCATIONAL 11-18 CATHOLIC BOARDING AND DAY SCHOOL



*Where everyone finds their place to excel*

## WHOLE SCHOOL OPEN MORNING

Saturday 9 October

## 6TH FORM OPEN MORNING

Saturday 2 October

- Top 3% of schools for value-added at A Level
- Daily school bus route from Pangbourne
  - Outstanding sporting tradition
- Day, weekly, flexi and full boarding

Near Reading • 01491 683522 • [registrar@oratory.co.uk](mailto:registrar@oratory.co.uk) • [oratory.co.uk](http://oratory.co.uk)

## PANGBOURNE VALLEY PLAYGROUP (PVPG)

PANGBOURNE VALLEY PLAYGROUP (PVPG) is a pre-school located within the grounds of Pangbourne Primary School, which offers many benefits; not least the close link with the school, enabling a smooth transition into full time education.

We are open Monday to Friday during term-time and work with a unique, child-centred approach, where children can learn and develop at their own pace within a happy atmosphere.

### We offer FREE CHILDCARE!!!

PVPG offers childcare that is **FREE** to eligible 2, 3 and 4 year olds. This includes 15 hours **FREE** childcare for **ALL** 3 and 4 year olds, and 15 and 30 hours **FREE** childcare for eligible 2-4 year olds. **We have places available for September!** To find out more, please email us at [pvpq.enquiries@gmail.com](mailto:pvpq.enquiries@gmail.com).

### TRANSITION TO SCHOOL

PVPG works in conjunction with Pangbourne Primary School to pick up children that attend the nursery class (3-4 year olds; Foundation Stage 1) at 12 noon to allow for a longer day of childcare.

### FUNDRAISING AND EVENTS

#### RACE NIGHT – 8PM, FRIDAY 8TH OCTOBER, PANGBOURNE WORKING MENS CLUB

Join us for a night at the races, be in with the chance to win big and enjoy some delicious food. For more information and to purchase tickets, please visit our fundraising page on our website <http://www.pvpq.org.uk/fundraising/>.

### PRE-LOVED SALE

Huge thanks to everyone who helped make our Pre-Loved Sale such a resounding success, either by donating, selling, baking and making, transporting etc. The enthusiastic support of Pangbourne residents was overwhelming and greatly appreciated.

Items were donated by over 60 local families and we were delighted by the attendance on the day, albeit with ongoing COVID restrictions.

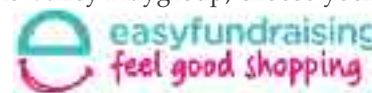
We made £859.76 on the day at the sale and we have also sold items on eBay, auction sites and at car boots – as such we have now made over £1500!!! We are continuing to sell remaining items at local sales so the final total will be even higher. In particular, sincere thanks to the Aman Kapila Charitable Trust Fund for their generous support. The money will go towards our garden project and will be fund matched by the Greenham Trust via the Good Exchange.

To find out more about our garden project, and how you can support us, or to donate please visit the link below:

<https://app.thegoodexchange.com/project/18804/pangbourne-valley-playgroup/pangbourne-playgroup-playground-refurbishment>

### PLEASE SUPPORT US!

PVPG is registered with Easyfundraising. You'll find 1000's of big name retailers like John Lewis, New Look, eBay and Tesco all ready to help us raise more for our charity. Simply go to [www.easyfundraising.org.uk](http://www.easyfundraising.org.uk) and search for Pangbourne Valley Playgroup, choose your favourite retailer and click the 'Shop Now' button.



Support us when you shop online with Amazon via [smile.amazon.co.uk](http://smile.amazon.co.uk). Register for Amazon Smile and choose to support Pangbourne Valley Playgroup – we get a donation every time you shop at no cost to you. You can even update the amazon app on your phone to activate smile, and have all eligible purchases raise money for PVPG automatically.



West Berkshire Lottery is local lottery supports good causes in West Berkshire and you can buy tickets to support us via their website giving you a 1/50 chance to win a prize each week with a top prize of £25,000! Tickets are only £1 and available via the link below [www.westberkshirelottery.co.uk/support/pangbourne-valley-playgroup](http://www.westberkshirelottery.co.uk/support/pangbourne-valley-playgroup)



We are delighted that PVPG has been selected by Co-op as a local community cause this year for our garden project! If you are a Co-op member, for every £1 you spend on selected Co-op products and services, 2p will go into your membership account and Co-op will give the same amount to support PVPG (you can also choose to donate your rewards). Please support us by choosing us as your nominated charity via your online account.



Funds raised for our Garden project will be matched up to £5,000 by The Greenham Trust via the Good Exchange. If you would like to donate to the Playgroup, please do so via the following link: <https://app.thegoodexchange.com/project/18804/pangbourne-valley-playgroup/pangbourne-playgroup-playground-refurbishment>.



### COMMITTEE NEWS

If you have time and dedication to support our committee then we are always on the lookout for new members and would be keen to hear from anyone that might be able to help.

Best wishes and stay safe from the  
Pangbourne Valley Playgroup committee and staff.

[www.PVPG.org.uk](http://www.PVPG.org.uk)



## ST ANDREW'S WELCOMES NEW HEAD MASTER, ED GRAHAM

St Andrew's School in Pangbourne welcomes Ed Graham as its new Head Master.

Previously, Mr Graham was Deputy Head at Westminster Cathedral Choir School in London. During his nine years at the school, he was Head of English, Head of Sport, led on pastoral provision, and taught History and Ancient Greek.

He replaces Mr Jon Bartlett, who after six successful years of leading the School, started as Head of Brookwood in Manchester, Massachusetts, USA in August.

Mr Graham's wife, Olivia, now part of the Admissions Team, joins him, along with their two children, who started in Pre-Prep. He commented, "I am delighted to have joined St Andrew's, and look forward to building on the outstanding education the School offers. We want our pupils to be stretched, not stressed, enjoy learning, and leave St Andrew's as considerate, cheerful and well-rounded individuals."

St Andrew's is a thriving co-educational day and boarding school set in 54 acres of fields and woodland, near Pangbourne. There are over 300 pupils aged between 3 and 13 enrolled for September 2021, with an almost even split between boys and girls.

The School takes both academic and extra-curricular ambition seriously, and although non-selective, sees its pupils awarded scholarships to senior schools with reassuring regularity. Children enjoy busy and active school days, and spend plenty of time outdoors.

The next Open Morning is at 9am on Friday 1st October, when parents can meet children and staff, and take a tour of the School.

Parents can book online through the School's website, or call the Director of Admissions, Jane Taylor on 0118 974 4276.

**St Andrew's**  
PANGBOURNE  


**OPEN MORNING FRIDAY 1ST OCTOBER**  
Book your place [standrewspangbourne.co.uk](http://standrewspangbourne.co.uk) | 0118 974 4276



## PANGBOURNE PRIMARY SCHOOL

The Year 6 class of Pangbourne Primary School are all looking forward to starting at secondary school in September. This year, leavers are heading to the following destinations: Denefield, Theale Green, Langtree, Little Heath, The Downs School, Reading Blue Coat School, The Oratory and The Abbey.

Once again, the restrictions of Coronavirus were felt across the board at our school this academic year. That said, remote learning was a success as the children proved to be resilient and adaptable learners and they came back to school engaged and ready to learn.

Thankfully, time spent at school was not all about handwashing and social distancing and the children enjoyed a rich and varied programme of activities to supplement their studies. This included World Book Day; a WWII Evacuee Day at Didcot Railway Centre; Bikeability courses; Sports Day; and a countryside walk. We even held a Year 6 Harry Potter Day during which it was absolutely proved that Quidditch is a perfectly playable game.

In place of our planned residential, the children spent three days at Ufton Court and two days in the Secret Garden at school with 'Ufton on the Road'. Bushcraft skills, team building exercises, goecaching and rafting were on the agenda, and here at school the children enjoyed the magic of outdoor learning and discovered how to make special constructions to leave as a legacy for future year groups. Busy days for Year 6!

Good luck to all our Leavers – you are all brilliant and we will miss you. Keep in touch and come back and see us!

*Sophie Hearn, Year 6 Teacher*



## FOPPS – FRIENDS OF PANGBOURNE PRIMARY SCHOOL



FOPPS is the PTA and charity which supports the children's education and experiences. We are a small, friendly group of volunteers who are always looking for new members and support.

It has been fantastic to restart our fundraising efforts in 2021, and we have been able to help with starting to replace the school's reading scheme and purchase a new set of reading books.

For the academic year of 2022, we will continue our efforts to raise money to replace two interactive whiteboards. We're also aiming to purchase a whole new set of Chromebooks, so that another class in KS2 can use the equipment. Longer term, we want to refresh and replace the outdoor play equipment in the Foundation Stage as well as the KS2 playground and climbing frame.

This past term we were very lucky to receive £1000 from the Arnold Clark Community Trust, and we have also been able to raise funds through Ice Cream Fridays (£410), School Uniform Sales (£50) and a very successful Summer Hamper Raffle (£628). Thank you to everyone who has been involved, donated and spent their money with us this term!

It is very much hoped that the Pangbourne 10k will return in 2021 as an in-person event. We have applied to West Berkshire's Get Active Community Fund to support the professional organisation of the event by local Physical Trainer (and founder of Mapledurham's Muddy Mayhem Event): Gareth France. The date we have set is:

### **Sunday 3 October 2021 – PANGBOURNE 10K RACE** **Pangbourne Primary School**

Entries will open in due course and you'll be able to get the latest information from [www.fopps.org.uk](http://www.fopps.org.uk) and by following our Social Media Channels.

We also intend to run our annual Fireworks Fiesta, and hope to confirm that in the next few weeks.

We are still fundraising through virtual and remote methods. Here are three ways the Pangbourne community can help:

#### **1. Online shopping to support your local charity**

If you shop online at Amazon, you can now also help to raise funds for FOPPS. Next time you log on, navigate to [smile.amazon.co.uk](https://smile.amazon.co.uk) and choose to support Friends Of Pangbourne Primary School (FOPPS). AmazonSmile is a simple and automatic way for you to support a charity of your choice every time you shop, at no cost to you. When you shop at [smile.amazon.co.uk](https://smile.amazon.co.uk), you'll find the exact same price and products, with the added bonus that Amazon will donate a .05% of the net purchase price to FOPPS.





## 2. West Berkshire Lottery – Drive For Support!

West Berkshire Lottery is an exciting weekly lottery that raises money for good causes in West Berkshire – and FOPPS is now registered as one of the causes. If you would like the chance of winning up to £25,000 AND supporting FOPPS, all you need to do is go to this site and purchase a ticket: [www.westberkshirelottery.co.uk/support/fopps](http://www.westberkshirelottery.co.uk/support/fopps)

West Berkshire Lottery also has grants available for any charity which buys more than ten tickets over a period of ten weeks, so please do get involved, because a potential win for you is also a win for FOPPS!

## 3. Reduce! Reuse! Recycle for FOPPS!

Lockdown may well have prompted you to have a clearout. We do have a textile recycling bank just inside the school playground, so if you need to dispose of old clothes, shoes or other textiles please do drop your things into the collection bank at the Reading Road school entrance

In addition, if you are a parent or carer with children at the school, we offer a second-hand uniform service. We have a wide range of school uniform available at only £1 per item. To donate, please bring in clean uniform to add to our collection. To buy, just get in touch with school reception who will connect you with our volunteers and arrange for you to pick up what you need.

If you would like more information, or would like to get involved, help or donate to your local primary school please contact us at [info@fopps.org.uk](mailto:info@fopps.org.uk).



## THE ORATORY

The Oratory has been providing pupils with a broad and rich education for over 160 years. Situated in a 100-acre South Oxfordshire countryside estates, it is a school where each pupil is known, valued and stretched as an individual.

September 2021 marks The Oratory's second year as a fully coeducational school. It sees our "pioneer girls" number grow from 50 to 100 and our first girls' house outgrown, with recruitment so successful that building redevelopment is underway to relocate Wootten House into the original Georgian country house which became the school. It will be wonderful to give girls the opportunity to live at the very heart of The Oratory.

The Oratory is proud of its broad and rich curriculum and strong exam results. We are in the Top 3% of schools for value added at A Level in 2020 and 2018 (2021 results pending at time of writing). At A Level, the majority of our pupils gain entry to their first choice of university, including many Russell Group universities. They then go on to pursue a wide range of exciting careers. However, an Oratory education is about developing young people in a much deeper sense than exam results alone can demonstrate.

An Oratory education gives our young people every opportunity to draw out and find their individual innate talents and qualities, and instils in them a sense of joy and a genuine love of learning. Strong pastoral care is at the heart of what we do. As a Catholic school that welcomes pupils of all faiths or none, visitors often comment on the inclusive family atmosphere of our school; it is this supportive environment that nurtures the confidence, self-expression, and resilience that are vital for success and happiness in the world of today.



### Find out more:

Whole School Open Morning, Saturday 9 October

6th Form Open Morning, Saturday 2 October

## CANTOR'S CROSSWORD NO.19 ANSWERS

### Across

1 SCOTCH MIST, 6 STAR, 9 ASTON, 10 HARPOONED, 12 MARY MAGDALENE, 14 MIMICKED, 15 ERASER, 17 LETS UP, 19 CRISPIAN, 21 HARD LUCK STORY, 24 USE BY DATE, 25 STARE, 26 STYE, 27 FANTASISED

### Down

1 SOAP, 2 OPTIMUM, 3 CONTRACTUALLY, 4 MOHAMMED, 5 SPRIG, 7 TENDERS, 8 RED HERRING, 11 ORAL RESPONSES, 13 SMALL HOURS, 16 CRESCENT, 18 TERSELY, 20 IN YEARS, 22 CLARA, 23 LEAD



# Treating you like family from one generation to the next.

In a good way, of course...

## **We make buying, selling and letting easy for you.**

People come to us because they know we always do the right thing.

Because we get results and are always there when they need us.

And, most of all, because we always treat them like family...

## **Family values go such a long way...**

For more than 70 years, we've been treating people like one of our own – in Reading, Tilehurst, Pangbourne and beyond.

You'll find us friendly, knowledgeable, professional – and here for you.

With Patrick Williams, you're family.  
Give us a call and find out for yourself.

Reading: 0118 957 3579  
Tilehurst: 0118 942 0777  
Pangbourne: 0118 984 4444  
[info@patrickwilliams.co.uk](mailto:info@patrickwilliams.co.uk)



[www.patrickwilliams.co.uk](http://www.patrickwilliams.co.uk)



## PANGBOURNE COLLEGE

### PREPARATIONS FOR THE 40TH ANNIVERSARY FALKLANDS COMMEMORATIONS HAVE BEGUN

We are honoured to be holding the 40th anniversary memorial service of the Falklands War next June and have begun preparing the grounds to provide a safe environment for our commemorations.

Work has begun on creating an open area to the north east of the Falkland Islands Memorial Chapel. This will maintain general upkeep of the grounds, plus provide greater visibility of the chapel during the service. With this, we can fully honour those 258 who paid the ultimate sacrifice almost 40 years ago. Forty-seven Old Pangbournians represented their country but mercifully, all survived.

To continue our annual memorial traditions this year, the College has recorded a beautiful service which is available to watch on our Youtube channel.

### PANGBOURNE COLLEGE COMMUNITY ACTION DAY

On Wednesday 26 June, Year 9 pupils spent the morning walking the footpaths, pavements and riverbanks of Pangbourne, collecting rubbish and general litter as they went. This included the recreation ground, the Pangbourne meadows, and the Thames Path, as well as the riverbank up to Beale Park.

The group also took a motorboat up river to clean up the rubbish floating along the banks, home to such beautiful wildlife. With swans, herons, geese, kingfishers and even otters now found on the river between Pangbourne and Goring, the pupils were really enthusiastic about the impact they could make to improve the environment.



### PANGBOURNE COLLEGE SHORTLISTED FOR PRESTIGIOUS SCHOOL AWARD

We are thrilled to have been shortlisted for the 'Co-educational Independent School of the Year' category in the Independent Schools of the Year 2021 Awards.



Run in association with the Independent School Parent magazine, the Awards are designed to showcase schools' success stories and celebrate the extraordinary and compelling student experience they provide.

Thomas Garnier, Head commented, 'We are so pleased that Pangbourne College has been recognised by the Independent Schools of the Year 2021 Awards. It really is a testament to the hard work of our whole community made up of staff, pupils and parents who have shown great resilience, initiative and industry during a really tough year.'

### OPEN MORNINGS

Our open events are an ideal opportunity for those families starting on their journey towards selecting the right senior school for their child. They include a presentation from our Head, a tour of the College and plenty of opportunities to meet our community of staff and pupils.

Our next Open Mornings will take place on the following dates:

- Whole College Open Morning: Saturday 18 September
- Dunbar (Year 7) Open Morning: Saturday 16 October

**Booking is essential.**

**Please register at [www.pangbourne.com](http://www.pangbourne.com).**

### STUDENTS AT BASILDON PRIMARY SCHOOL BENEFIT FROM A DONATION OF CHROMEBOOKS BY PANGBOURNE COLLEGE

Following a fundraising effort by Basildon Primary School to try and double the number of Chromebooks at the school, Pangbourne College has donated 14 of its ex-staff devices to help with this endeavour.

Mr David Metcalfe, Housemaster at Pangbourne College, along with Sixth Form students, delivered the Chromebooks to Basildon Primary on 29 June 2021. They were gratefully received by The Head, Miss Cliffe, and a group of enthusiastic Basildon Primary children, who couldn't wait to try out the devices.



The Head of Basildon Primary, Miss Melissa Cliffe, was incredibly grateful for this donation. She explains, "This kind donation of Chromebooks from Pangbourne College will make a huge difference to our IT provision. The last year has shown the importance of IT and the role it plays in allowing children to access learning. It is also essential to equip our children with the relevant IT skills for the future, and having access to devices such as these Chromebooks will allow us to do so."

Mr David Metcalfe, Housemaster at Pangbourne College explains, "We realise the crucial role that IT plays in student learning, even more so during the Pandemic. We had the advantage of an IT infrastructure which enabled our students to stay engaged. Even when the worst scenario hit and students had to self-isolate, our timetable continued without flinching; the learning carried on and we continued to meet our primary aim of providing an excellent academic programme for our students.

That's why we are delighted to donate these Chromebooks to Basildon Primary to help improve its IT provision."



Offering quality tree care  
from a family run firm

40 years experience in  
planting, pruning and removal

Free estimates and advice

Contact Stewart Bee on

**0118 9595 222**

**07976 611128**

**beetreeservices@tiscali.co.uk**

*Seasoned firewood always available*

Unit 12,  
Manor Farm,  
Peppard Common,  
RG9 5LA



### **YOUR LOCAL GLASS AND GLAZING COMPANY**

- All types of glass cut to size
- Mirrors, shelves and table tops
- Greenhouse glass and picture glass
- Full glazing service, trade and domestic
- Broken windows and shopfront glass replaced
  - Traditional leadlights repaired
  - Broken and misted double glazed sealed units replaced
- UPVC, aluminium and hardwood windows, doors and conservatories
  - Delivery service

**CALL FOR ADVICE AND FREE QUOTATION**

**01491 629901**



15 years guarantee  
on all high performance felts  
also

Tiling and Lead Repairs

Phone Bradfield

**0118 9744701 or**

**07880 930 958**

Email: **eddylaming@hotmail.co.uk**

*38 years experience*



### **NEIL HOULDEY** *Quality Painting and Decorating*

- All types of interior and exterior work completed
- Advanced City & Guilds qualified
- General maintenance and repairs undertaken
- Gold CSCS card accreditation
  - 30 years experience
  - Fully insured
- Pangbourne and surrounding areas

**07731 476100 • 0118 9845532**

**neil.houldey@yahoo.com**

**www.neilhouldeyqualitypaintinganddecorating.com**



---

# neville & turner

Village & Country Property Agents

## *Thinking of selling or letting?*

*Whether you require specific valuation and marketing advice or wish to discuss general property matters and requirements, please call us - we are here to help.*

T: 0118 984 1841 E: [post@neville-turner.co.uk](mailto:post@neville-turner.co.uk)

A: 2 High Street, Pangbourne, Berkshire RG8 7AB

W: [www.neville-turner.co.uk](http://www.neville-turner.co.uk)

## STANROD MOTORS 2

**is happy to collect and deliver your car  
for all your MOT and servicing needs**

**Call Steve or Sean  
at STANROD MOTORS 2  
today on 0118 976 7686**

Open 8am-6pm Mon-Fri • 8am-Noon Sat  
14 Station Road, Pangbourne, Reading RG8 7AN  
email: [info@stanrodmotors2.com](mailto:info@stanrodmotors2.com)

# PANGBOURNE PLACE-NAMES

## SHEPARD PLACE

**Shepard Place**, with its imposing entrance and unusual spelling, is a development that catches the eye. It was completed in various stages between 2015 and 2017 on land owned by Pangbourne Beaver Properties.

The name of the development is a reminder that E.H. Shepard was the last illustrator of Kenneth Grahame's *The Wind in the Willows*. Born in 1879 and with a distinguished World War I record, in which he won an MC, his name was made as an artist with his illustrations of A.A. Milne's *When We Were Very Young*, published in 1924, followed by the *Winnie-the-Pooh* books in 1927. Thus it was that in 1931 he was invited by Kenneth Grahame, who had not liked the two earlier interpretations of his the *Wind in the Willows* characters which he considered "puppets", to illustrate his classic anew. Shepard met Kenneth Grahame at Church Cottage, Pangbourne where he was living, to discuss the project, and to take a look at the landscape in our area. This is similar to Cookham, Berkshire where the book was actually written in 1908. Grahame died in 1932, but shortly before his death expressed strong approval of Shepard's work, saying of the characters: "I am glad that you made them real". Shepard lived till 1976, but he considered his illustrations for *The Wind in the Willows* to be his favourite work.



*Hardwick House, a possible inspiration for Toad Hall in The Wind in the Willows.*

'Shepherd' as the name for a man who tends sheep rarely appears in names of significance back to Anglo-Saxon times, an exception being the farm (*tun*) at **Shepperton**, Surrey, first recorded in 959, and now best remembered for Shepperton Studios. However, 'shepherd' abounds in minor names, with shepherds coming to relative local prominence after the ravages of the Black Death in 1349. Labour became scarce, and estate owners turned arable land over to the less intensive farming of pasture. This may be the significance of names like **Sheep Down** at both East and West Ilsley, as well as **Upper Bellweather Furlong**, East Ilsley, a bell-wether being the leading sheep of a flock. Recalled at names like **Shepherds Close**, Ashampstead and **Shepphard's Copse**, Speen are men who became responsible for moving flocks to fresh pastures and arranging centralized shearing and the sale of wool. Under them



*Berkshire Nott.*

were specialists like the remote ancestors of some modern Lambert surnames (*lamb-hierde* in medieval English), concerned with the specific management of lambs in small enclosures like **Le Lambecclose**, recorded in Pangbourne in 1548. **Ewe Close**, Bucklebury, from 1662, would have interested some ancestors of Ewart, 'ewe-herd', the keepers of the dairy aspect of sheep management at the period. Ewes were kept for their milk, from which cheese was made. Incidentally, **Notts Pightle**, Pangbourne, mentioned in 1839, and **Notmoor**, Theale, from 1790 both refer to the Berkshire Nott, a breed of sheep that is now extinct but was related to the modern Southdown. As far as I am aware, these are the only place- or minor name references to this breed in our area.

Sheep bred on the Berkshire Downs were important to the local economy, and an informal sheep market was held in East Ilsley from the reign of Henry II (1154-1189). This grew in importance over the centuries, until a specific charter was granted in 1620 to hold a sheep market in the village. Sheep markets and fairs flourished, with, in their heyday, 14 sheep fairs a year, and markets held on alternate Wednesdays from February to July. Sheep pens were erected at many places in the village, and are specifically recalled at **Pen Meadow**. Thousands of sheep were driven into the village, mainly along drove roads recalled at names such as **Drove Lane**, Hermitage, **Driftway**, Compton, and **Halfmile Drove**, Lambourn. Numbers increased annually until the 19th century, with at its height, 80,000 the largest number of sheep penned in a day, and an annual average of about 400,000. The East Ilsley sheep markets were practically the largest in the whole country.



*East Ilsley Sheep Fair.  
(Courtesy of East Ilsley Local History Society)*

In the Middle Ages the wool from Berkshire sheep was the mainstay of the cloth industry in Newbury. Minor names in our area recall some of the many specializations that the production of cloth required. Once the raw wool had been combed, the spinners, as at **Spinner Green**, Easthampstead, set to work. This work was often done by women in their cottages, remembered in our modern 'spinster'. Weavers, as at **Weaver's Wood**, Cold Ash, and **Weavers Lane**, Inkpen, wove the wool into cloth, with **Slaymakers**, a field name in Wargrave in 1840, recording the makers of the shuttles for the looms, a slay being defined as 'an instrument to beat up the weft'. Next came the wool trampers, recalled at **Fuller's Copse**, Pangbourne and **Walkers's Shaw**, Burghfield. Originally, they literally walked or trampled on the cloth in a trough of water combined with fuller's earth, to shrink, strengthen and then purify it.

# PANGBOURNE PLACE-NAMES

With the scarcity of manpower following the Plague of 1348, water-powered fulling mills were introduced, using a drum attached to a water wheel to beat the cloth with wooden hammers, and for a short period in the late 14th century the mill at Tidmarsh was used in this way. Nearby in 1839 was **Rack Close**, referring to land on which cloth-stretching frames ('racks') were located.

In many parts of the country weaving was a cottage industry, with the weavers usually working from home, although in Newbury there were many weaving workshops, often fairly small. The surname Webber refers to men, but women were certainly involved too, as implied in the -st- of Webster, like for spinster, above. However, the distinction in the surnames between Webber and Webster seems to have been lost early on. Packers, as at **Packer's Copse**, Shaw, collected the woven cloth from the weavers, and took it to the clothiers in central locations, such as at Newbury.

Later in the Middle Ages some clothiers set several looms in their own homes, including the Winchcombe family, recalled in particular at **The Winchcombe School** and **Winchcombe Road**. John Winchcombe the Elder had married his master's widow, and so rose from poverty. When he died, in 1519, his son John, known as Jack of Newbury, steadily grew the business. Born in 1489, he became a substantial figure in the cloth industry, with 30-50 looms within his premises producing cloth on an industrial scale on a site now occupied by Marks & Spencer. All that now remains is the gabled end of the Tudor building in **Marsh Lane**, and the name **Jack Street** at the other end of the block, but at the period the premises extended from 22-24 Northbrook Street well towards Victoria Park. The general function of this part of Newbury is remembered at **Weavers Walk**.

Jack made his fortune manufacturing kersey, a type of coarse narrow cloth, each being about a yard (0.9m) wide and 17-18 yards long, and recalled at **Kersey Crescent**. He exported via London to the fairs at Antwerp, as well as in Italy, Germany and Hungary, where Winchcombe cloths were recognised as the best of their kind. In 1540 he led a successful campaign to persuade Henry VIII to change the law for the woolen cloth industry, and with his wealth he purchased the manors of Bucklebury and Thatcham from the Crown, for the apparently princely sum of £2,619, 13 shillings and 4 pence, about £756,000 at today's values. Later he also acquired the estates at East Lockinge and East Shefford.



*Jack of Newbury, 1489-1557.*



*Shaw House.*

Jack died in 1557, but the industry continued to thrive, with the Dolman family making enough money from the wool trade to build Shaw House in 1581. Prosperity lasted into the following century, with the **Cloth Hall**, now the **West Berkshire Museum**, Newbury, built in 1628. There, all aspects of cloth production took place, from the arrival of the fleece to the finished cloth, except for spinning and cleansing. However, even at that time the Newbury cloth trade had lost its national importance, and by the 1700s the Industrial Revolution had brought in new production methods, with much of the cloth industry moving to Yorkshire and Lancashire.

The West Berkshire Museum also houses the modern **Newbury Coat**, the original having



*The original Newbury Coat.*

been produced following a 1,000 guinea bet laid at a dinner party between Sir John Throckmorton of Faringdon and Mr John Coxeter, a cloth manufacturer and owner of Greenham Mill. Mr Coxeter said: "So great are the improvements in machinery that I have lately introduced into my mill, that I believe that in twenty-four hours I could take the coat off your back, reduce it to wool, and turn it back into a coat again." On 25 June 1811 at 5.00am Mr Coxeter arrived at his mill with a shepherd and two of his finest sheep. By 4.00pm all the processes in manufacturing the cloth had been completed, and it was passed to a tailor and his nine assistants. The finished coat was handed over to Sir John at 6.20pm, the whole process having taken just 13 hours 20 minutes.

In 1991 at the Newbury Show a second, identical coat was made using the same processes, materials and machinery. The previous time was beaten by one hour. The sheep on both occasions were the Southdown, not the Berkshire Nott, so there was no actual continuity of breed to earlier times. However, I like to think that, with the many generations that make up a family back to the early Middle Ages, an ancestor of E.H. Shepard might just, unwittingly, be referred to in one of the names mentioned in this article.

*Nigel Suffield-Jones*

If you would like to know about the possible meaning(s) of your Family name and/or First name, contact me at [nsjnames@gmail.com](mailto:nsjnames@gmail.com).



**JCN BUILDERS**  
**BUILDING, CARPENTRY AND HOME IMPROVEMENT SPECIALISTS**  
**ALL WORK GUARANTEED**  
 OVER 15 YEARS EXPERIENCE

- EXTENSIONS
- ALTERATIONS
- RENOVATIONS
- EXTERNAL DECOR
- CONVERSIONS
- KITCHENS/BATHROOMS
- PATIOS/DRIVES
- LISTED BUILDING WORKS

**ALL ASPECTS OF BUILDING WORK UNDERTAKEN**  
**FULLY INSURED • REFERENCES AVAILABLE**

**0118 9845959 0791 7095379**

**DRAIN & ABLE**  
 Independent Drainage Service  
**24/7 EMERGENCY SERVICE**  
**GUARANTEED ARRIVAL**  
**ALL TELEPHONE CALLS ANSWERED PERSONALLY**  
 Call anytime on 0118 957 6244/  
 07795 598207  
**www.drainandable.co.uk**

*HIGHLY RECOMMENDED*

**ATB Accounting**  
 Old Breedon School, 8-10 Reading Road,  
 Pangbourne RG8 7LY  
**0118 405 6000**

**Services include:**

Bookkeeping ..... from £18 p/h  
 Ltd Co. Accounts ..... from £700 p/a  
 VAT Returns ..... from £100 p/a  
 Self Assessments ..... from £70 p/a

(ALL PRICES EXCLUDING VAT)

*For a free quotation:*  
 Call us on **0118 405 6000**,  
 or call in – no appointment necessary,  
 or email: **charles@atbaccounting.co.uk**

**CIG.**

Chiltern Insurance Group  
 Pangbourne

Business and Personal Insurance  
 from your Local Broker

**Call 0118 984 3355**

[www.chilterninsurance.co.uk](http://www.chilterninsurance.co.uk)

St James House, Church Road,  
 Pangbourne, RG8 7AR

Chiltern Insurance Consultants Ltd are authorised and regulated by the Financial Conduct Authority for General Insurance Business.

**LOCKSMITH** **ACG SERVICES**

Locks changed, fitted, repaired & opened.  
 Yale locks, five lever mortice locks, digital locks,  
 UPVC door locks & handles, UPVC window locks.

**Emergency callout service**

Over thirty years of experience. Free quotations  
 Tel: **01491 682050** or **07710 409216**  
**www.acgservices.co.uk**

Office: 3 Wayside Green, Woodcote, Oxon RG8 0PR. Proprietor Richard Homden

**DO YOU NEED A WILL OR LASTING POWER OF ATTORNEY?**

If so contact **Chris Lawn**, a solicitor working locally,  
 on **07843 679 239** or email **chris@jonathanlea.net**

Chris will visit you at your home.  
 Appointments last approximately 1 hour and  
 can be held during the day, evening or weekend.

*Hillhampton Wills is now incorporated into  
 Jonathan Lea Network Solicitors.*

For further information visit **www.chrislawn.com**



*"Lafford & Leavey, experts in  
bringing the outside - inside"*

## **Windows - Doors - Conservatories UPVC or Timber**

One of the leading window, door and conservatory installers in Berkshire, offering free quotations and advice from a company with a formidable reputation spanning 50 years. Choose from a wide range of products in a style and finish which will suit your budget and needs, we are only a phone call away.



## **LAFFORD & LEAVEY LTD**

ARROWHEAD ROAD, THEALE, READING, RG7 4AZ

Tel: Reading (0118) 9303333 Fax: (0118) 9323707

Email: [info@laffordandleavey.co.uk](mailto:info@laffordandleavey.co.uk)



## PANGBOURNE AND WHITCHURCH SUSTAINABILITY NEWS



### COP 26 – NOVEMBER – GLASGOW

By the time you read this the final arrangements of COP 26, will be well in hand and our hopes for the future of the planet will be in the hands of the representatives. Professor Sir Brian Hoskins, leading climate scientist and member of PAWS, writes:-

COP26, led by the UK with our MP Alok Sharma in the chair, will start on 31 October in Glasgow. This is the most important meeting of all the countries of the world since COP21 in Paris in 2015. There it was agreed that the world should aim to keep the rise in global temperature to less than 2°C and try to make 1.5°C the limit. For the first time, individual countries volunteered their contributions to the necessary greenhouse gas emission reductions. Unsurprisingly, these first reduction offers were not enough, but they were a start.

The main aim of COP26 is to keep the 1.5°C target alive. In more detail the aims are

1. Secure global agreement for net zero emissions by mid-century, update the emission reductions promised by each country and keep 1.5°C within reach.
2. Promote adaptation to climate change to protect communities and natural habitats.
3. Mobilise at least 100 billion dollars per year in finance to help poorer countries adapt and develop in a green manner. This has been promised by the richer countries for many years.
4. Work together and finalise the rules for how emissions etc will be accounted for.

COP26 is probably the last chance to make the Paris Agreement work and to limit climate change so that the extreme weather events we have seen this year are not just the foretaste of far worse.

In keeping with the second aim – Promote adaptation in order to protect communities and natural habitats - PAWS is launching a campaign to challenge all of us who think that we are helpless in the battle against climate change. We know that every individual action to reduce carbon emissions will work collectively to lessen the impact of global warming and our two communities are working together to encourage us all to dig for victory!

### TREE FEST

During the autumn and winter months we want all of us who live in this lovely Thameside area to plant as many trees as possible in public spaces and in gardens. We will kick off the project, with a stall outside Garlands on Saturday 9 October 10-2pm and the start of the community art project "SAP". This will be followed on the 17 October by tree planting in the river meadows:



### Tree planting in the River Meadows 17 October

Pangbourne Parish Council and Pangbourne and Whitchurch Sustainability Group (PAWS) are working together on a project to plant 45 tree saplings in the River Meadows on Sunday 17th October 2021. These saplings were kindly donated by The Woodland Trust and local residents. We would like to get as many people involved as possible and for volunteers to "adopt" a tree. This would mean ensuring that your designated sapling is watered during dry spells and ensuring that it remains healthy.

Pangbourne Parish is very lucky to have over 600 trees on Parish Council land. These trees are an integral part of what makes living in our village so special. Trees are a vital natural way of mitigating the effects of climate change by absorbing carbon. But in addition to this amazing feature they provide shelter and food for a huge amount of different species and insects, give us natural shade, can help to reduce flooding events and walking amongst trees has been proven to reduce the production of the stress hormone cortisol! This is all in addition to their stunning natural beauty.

It is hoped that our village will come together to plant and look after these trees and do their bit to improve our local environment. So please do get in touch at [clerk@pangbourne-pc.gov.uk](mailto:clerk@pangbourne-pc.gov.uk) to register your interest. Let's get planting!

PAWS ran a tree identification quiz during the summer holidays, encouraging children and young people to learn more about the variety of trees we have in our area. We will announce the winner in the next magazine.



## ACTIVE TRAVEL

*The State of the UK Climate* report recently released by the Met Office emphasises the urgent need to reduce carbon emissions immediately. The report notes that last year was the third warmest, fifth wettest and eighth sunniest since records began, making 2020 the first year to be in the top ten for all three variables. The report confirms that climate change is not something of the future it is already here in the UK. The author of the report Mike Kenton told the BBC that it is plausible that UK temperatures will be regularly hitting 40°C by the 2040's. We urgently need to adapt our behaviours to reduce the carbon emissions that are driving up temperature and PAWS is working with local councils to encourage more safe cycling as an alternative to fossil fuel guzzling cars. See the following report from our Active Travel group:

The Active Travel group is continuing to look at practical ways to encourage people to leave cars for local journeys and use alternative means of transport. The term "Active Travel" covers a greater group of highway users than cycles. So, whether we want to cycle, use a mobility scooter or just walk in greater comfort (for example with a pram), we can do so without some of the hassles faced at present.

In the last Magazine we shared results of our survey and are now working towards the aims in our plan. Our main headings remain the same: Bike Parking and Safe travel. Bike parking improvements very much depend on land users' willingness to have bike stands on their land. We have a great example of this already

as the Co-op agreed to have a rack and there is now a bike rack installed at the side of the shop. Given this was the most requested place for bike racks on our survey, this is very good news and the Co-op and West Berkshire council are to be thanked for this. We know more are needed and hope other land owners will see this as an asset to the village, particularly for local commerce.

The second area, Safe travel, needs time to be achieved. Areas we are looking at include simple things like cutting back vegetation, which inhibits the use of pavements as well as longer term challenges like speed limit reviews, and opportunities for better space sharing by highway users.

Most of us are well aware of the mental and physical toll the pandemic has put us under and the yearning for normal times to be resumed. But life cannot continue as before if we are to survive the changing dynamics of the natural world that are a response to global warming. We look with horror at the flooding in Europe and the wild fires burning in Greece this summer and we know we are being challenged by nature. But we can make a difference if we come together as communities working together to reduce our carbon emissions. We came together in the pandemic, supporting each other and the NHS so we know we can come together to make our environment a place where

we support new initiatives and help the UK to achieve world leadership in tackling climate change.

*Heather Thorne*

## 2021/22 PAWS CALENDAR

WHEN	WHAT	WHERE
Thursday 7 October 8pm	'The importance of trees for climate change'	Zoom
Saturday 9 October 10am – 2pm	Opening of Treefest	Outside Garlands
Sunday 17 October 12noon – 4pm	Tree Planting	River Meadows, Pangbourne
Thursday 18 November 8pm start	Film Night	Pangbourne Village Hall
Thursday 16th December 8pm – 10pm	Christmas Gathering: a celebration of 10+1 years of PAWS! Potluck supper; all welcome	Pangbourne Village Hall
Thursday 13 January 2022 8pm – 10pm	PAWS 2022 Planning Meeting	Pangbourne Village Hall

Visit our website [www.pawsg.com](http://www.pawsg.com)  
and join our Facebook group: PAWS (Pangbourne & Whitchurch Sustainability)



## SPB STONEWORKS LTD



Tel: 01189371827 or 07971881504

Visit us @ [www.spbstoneworks.co.uk](http://www.spbstoneworks.co.uk)

Email: [simonbeale@spbstoneworks.co.uk](mailto:simonbeale@spbstoneworks.co.uk) or [admin@spbstoneworks.co.uk](mailto:admin@spbstoneworks.co.uk)

Special offers on all types on memorials from Headstone, Full memorials, Cremation stones, Childrens memorials & Vases  
FREE NO OBLIGATION QUOTES and FREE FULL COLOUR BROCHURE ON REQUEST



- MONUMENTAL STONE MASONS.
- SUPPLYING ALL TYPES OF MEMORIALS & HEADSTONES
- 30 YEAR GUARANTEE ON ALL NEW & REPAIR WORK
  - MEMBERS OF BRAMM, NAMM, AND THE GUILD OF MASTER CRAFTSMEN
- RENOVATIONS & CLEANING OF EXISTING MEMORIALS
  - ADDITIONAL INSCRIPTIONS ALL STYLES
  - REPAIRS & RE-LEVELLING
- FAST & FRIENDLY FAMILY RUN COMPANY



**Up to 70% Cheaper than Funeral directors  
with 100% Guarantee to beat any memorial quote**

Showroom by appointment

Unit 3 Old Mill Trading Estate, 61 Reading Road, Pangbourne RG8 7HY



**COUNTRY  
ROOFING  
— SUPPLIES —**

*All you need under one roof*

Visit us at  
Timbers Farm, Henley-on-Thames RG9 5SY

Call us on 01491 641024

[www.countryroofingsupplies.co.uk](http://www.countryroofingsupplies.co.uk)

### *Duncan Agar Painter and Decorator*

- Highly Experienced, Professional Tradesman
- All Aspects of Interior and Exterior Decorating
  - Traditional and Modern Finishes
  - Period Properties a Speciality
  - Free Quotations and Advice
  - References Available

**Tel: 0118 971 2340  
& 07787 552 983**

## PERSONAL TAX RETURNS

Contact Geoffrey Cole  
**Geoffrey Cole & Co**

*Chartered Accountants & Registered Auditors*

**4 Reading Road Pangbourne Berkshire RG8 7LY**  
**Telephone 0118 984 1556 Email [post@geoffreycollection.co.uk](mailto:post@geoffreycollection.co.uk)**  
**[www.geoffreycollection.co.uk](http://www.geoffreycollection.co.uk)**

## Plumber & Bathroom fitter

**From Dripping Taps to Complete Bathroom Design and Installation.**

Full Quality Refit, all Tiling, Construction, Alterations etc, from start to finish.

**Free Advice and Quotes.  
Friendly, Reliable and Insured.**

**Happy to undertake  
the smallest of jobs**

**Richard – 0771 333 6661  
or 0118 9676384**  
(answering machine)

## ***Cleaver Cars Ltd***

Independent Citroën Specialist

♦  
Servicing, repairs and MOTs  
All makes and models

♦  
Free local collection  
and delivery service

♦  
**Tel. 0118 957 6405**

67 Loverock Road  
Reading, RG30 1DZ

Email: [cleavercars@btconnect.com](mailto:cleavercars@btconnect.com)  
[www.cleavercars-reading.co.uk](http://www.cleavercars-reading.co.uk)

## **Monumental & Masonry Craftsmen**

Family run business since 1858

**A.F. JONES**  
33 Bedford Road  
Reading  
RG1 7EX

Tel: 0118 9573537  
email  
[info@afjones.co.uk](mailto:info@afjones.co.uk)

**E.T. SHEPPARD**  
36 Reading Road  
Henley on Thames  
RG9 1AG

Tel: 01491 574644  
email  
[info@etsheppard.co.uk](mailto:info@etsheppard.co.uk)

**Specialists in all stonework  
Memorials, Restoration, Kitchens, Bathrooms**

## **HFAC LIMITED ROOFERS & DAMP PROOFING SOLUTIONS**

**HIGH-QUALITY ROOFING SERVICES**

- Flat roofing specialists
- Chimneys
- Insulation
- Budget roof repairs
- Fascias, soffits and guttering
- Repointing
- Painting
- Plastering
- Rendering
- Carpentry
- Guttering replacements
- Gutter Cleaning
- All damp proof solutions
- All lead dressing
- Roof moss removal
- 24 hour drain clearing and blockages
- Cast iron guttering
- OAP 10% discount
- 30 year guarantee

**Good Quality is Soon Forgotten**

**5\*\*\*\*\* GOOGLE REVIEWS**



Call us on:

**01491 876446 • 07425 790635**

Email: [hfactd@gmail.com](mailto:hfactd@gmail.com)

Chiltern House, 45 Station Road, Henley-on-Thames, Oxon, RG9 1AT

## **PICTURE FRAMING PICTURE RESTORATION**

**R. G. Bridgewater**

(established in the trade since 1956,  
apprenticed at Reading Fine Art Gallery,  
also with Picture Crafts of London Street, Reading)

- Oils and pastels restored
- Watercolours, engravings, prints de-foxed and cleaned
- Conservation mounting and framing
- All aspects of framing undertaken (tapestries, silks, butterflies, medals, etc)

**Tel: 0118 984 4622**





**FAMILY TREE**  
 GROUNDS MAINTENANCE AND CONSTRUCTION  
**Garden Maintenance**

- Fencing • Gates • Hedge cutting
- Decking • Patios • Grass cutting

**TEL. 07736 650 477**  
 email.familytreegmc@gmail.com



**andrea newill**  
 GARDEN DESIGN

Beautifully designed gardens by  
 experienced, qualified, local  
 garden designer

**Andrea Newill MSGD**  
 info@andreanewill.co.uk www.andreanewill.co.uk  
 07901 856408 0118 9710450



- Tree Surgery
- Tree Felling
- Hedge Cutting
- Logs
- Fencing
- Fully Insured
- Fully Qualified
- Free Quotations
- 24 Hour Callouts
- Competitive Prices

**01488 647204 07979 507 195**  
 robfox@foxestreeservices.co.uk  
 www.foxestreesurgery.com  
 Local business based in Newbury

Hedge Cutting Fencing Plant Hire Obstructive Trees Complete Tree Care Stump Grinding



**Perfect Boundary Limited**



**Hard Landscaping and Design.**  
*Professional Service. Call for a Quotation.*

Email [Info@perfectboundarylimited.co.uk](mailto:Info@perfectboundarylimited.co.uk)  
[www.perfectboundarylimited.co.uk](http://www.perfectboundarylimited.co.uk)  
 Tel: 01189 968 009 Mob: 07796 202217




**J A M Upholstery**  
 Traditional Antique & Modern Upholstery  
 & Re-covering

Seat feeling soft and saggy?  
 Arms need firming up?  
 Lumbar lacking support?

Jenny can give your favourite chair the love and  
 attention needed to get it back in shape,  
 or simply give it a new look in a new fabric.

[www.jamupholstery.co.uk](http://www.jamupholstery.co.uk)  
[jenny@jamupholstery.co.uk](mailto:jenny@jamupholstery.co.uk) 07976 443972  
 Based in Lower Basildon



**Coombe House**  
 RESIDENTIAL CARE

- Retirement home in Streatley on Thames
- 24 hour care and support by well qualified staff
  - Elegant, homely and relaxed country house in attractive grounds
  - Peace, privacy and independence in caring surroundings
  - Serving the local community for over 30 years

**01491 872174** [www.coombehouse.co.uk](http://www.coombehouse.co.uk) [enquiries@coombehouse.co.uk](mailto:enquiries@coombehouse.co.uk)





## PANGBOURNE PARISH COUNCIL

Tel: 0118 9841118 Email: [clerk@pangbourne-pc.gov.uk](mailto:clerk@pangbourne-pc.gov.uk) Website: [www.pangbourne-pc.gov.uk](http://www.pangbourne-pc.gov.uk)

### NEW BIN HOOPS

You may have noticed that new bin hoops have been placed on gates and posts near the exits from the River Meadows and also at the sports pavilion on the Recreation Ground by Councillors in addition to the existing bin provision. So far, these appear to be well used and we are trialling these to help assist us in keeping litter to a minimum in these areas.

Please do use the usual bins if possible or these additional bags or alternatively take your litter home with you, especially if the main bins are full.



### POLICE AND FIRE SERVICE WATER SAFETY EVENT

You may have seen have the recent roadshow by the Fire and Rescue and Neighbourhood Police Team at Pangbourne Meadows. This event was held to highlight the potential dangers of cold water swimming and bridge jumping.

The Royal Berkshire Fire and Rescue Service website has a wealth of useful information and safety advice on this subject: <https://www.rbfrs.co.uk/your-safety/out-and-about/water-safety/>

Cold water shock refers to the reaction of the body to entering cold water. Cold water shock can have a dramatic effect on your body, such as causing you to breathe in water, make your muscles weaken, and can even cause

your heart to go into abnormal rhythms, ultimately resulting in death.

Anything below 15°C is defined as cold water so there is a significant risk of it occurring when entering the water at any time of year, even in the summer. Average UK and Ireland sea temperatures are just 12°C. Rivers such as the Thames are colder.



### FREE ONLINE DEFIBRILLATOR TRAINING

Many people will have noticed that Pangbourne Parish Council installed a new defibrillator at Pangbourne Recreation Ground Public Conveniences a few months ago. We are also currently working to find a suitable location for another defibrillator within the village centre. This is in addition to the other PC owned defibrillator located at the Village Hall and other privately owned defibrillators elsewhere in the village.

We have secured the opportunity to hold an online defibrillator course with places for approx. 100 people from within the village community and local groups so that as many people as possible are trained in their use.

If you would like to attend this course, please contact the Clerk on: [clerk@pangbourne-pc.gov.uk](mailto:clerk@pangbourne-pc.gov.uk) to register your interest in the first instance.



### TREE PLANTING

#### TREE PLANTING 17TH OCTOBER 2021

There will be a community tree planting day on 17th October 2021 in the River Meadows, Pangbourne. The Woodland Trust and local residents have kindly donated a number of free saplings to the Parish. Pangbourne Parish Council are looking to get as many people involved as possible and are asking for volunteers to plant and 'adopt' a tree. This would mean ensuring that your tree is kept watered during dry spells and remains healthy. Please join us for this special community day, register your interest by emailing [clerk@pangbourne-pc.gov.uk](mailto:clerk@pangbourne-pc.gov.uk) or see [www.pangbourne-pc.gov.uk](http://www.pangbourne-pc.gov.uk) for more details.

# COUNCIL NEWS

---

## WEST BERKSHIRE BUS SURVEY

West Berkshire Council are currently running a survey for the public to feedback their views on current bus services in the district, and their suggestions for possible improvements. The survey can be seen at: <https://info.westberks.gov.uk/wbcbusurvey>. This survey runs until midnight Monday 30th August 2021.

## BELISHA BEACON REPAIR

Pangbourne Parish Council have followed up with the Highways Department at West Berkshire Council regarding the repair of the Belisha Beacon by the pedestrian crossing in the centre of the village.

We are told that the replacement column is of a non-standard type and has needed to be made to order. We believe that this has now arrived and the repairs should be done very shortly.

In addition, WBC have informed us that they intend to renew the white line markings at the crossing and through the centre of the village at the same time.

## THAMES PATH IMPROVEMENT WORKS

The series of improvement works to the Thames Path at the far end of the River Meadows and onwards to Purley has now begun. New anti-slip surfacing has been installed on the ramps/boardwalks in Pangbourne Meadows and ramps to the boardwalk further downstream have been extended as well as aggregate laid on all the gate landings Pangbourne to Purley.

Further clearance work in these areas is planned for the Autumn.

## PANGBOURNE VILLAGE HALL



Please do visit the re-launched Parish Website <https://www.pangbourne-pc.gov.uk/> to see more details for the hall and to book online via the Hallmaster system.

Alternatively, please contact the Hall Bookings Clerk June Hughes to make a booking.

*To hire or for enquiries about the hall:*

Go to our website Hall Bookings Page

Telephone June Hughes on 07748 884341

Email: [pangbournevillagehall@gmx.co.uk](mailto:pangbournevillagehall@gmx.co.uk)



## RECREATION GROUND CAR PARK AND TOILETS

Please note the operating hours of the Recreation Ground Car Park are as below throughout the year with slightly longer opening hours for the car park and toilets over the summer months. Gates will be closed after these times and the car park will be locked overnight.

### CAR PARK OPENING HOURS:

May-Sept 8am – 9pm

Oct-April 8am – 8pm

GATES CLOSED OVERNIGHT

NO OVERNIGHT PARKING IS PERMITTED

### PUBLIC CONVENIENCES

OPENING HOURS:

May-Sept 8am – 9pm

Oct-April 8am – 6pm

## WILDLIFE INCIDENT – PANGBOURNE MEADOWS

Sadly, we have to report that we received an email from a visitor to Pangbourne Meadows who witnessed a dog attack on the waterfowl at the meadows which unfortunately resulted in the death of a duck.

A couple were walking their dog and did not call it back when it began chasing and harassing the geese and ducks, which sadly led to the attack which was obviously very distressing to witness.

Please can we ask users of this area to keep dogs under close control at all times and to be aware of where and what your dogs are doing. This incident has been reported to the police.



## PLANNING APPLICATIONS REVIEWED BY THE PARISH COUNCIL SINCE LAST ARTICLE

APP NO:	PROPOSAL	RECOMMENDATION
21/01528/ HOUSE	Extensions and Alterations Hillcrest, Courtlands Hill, Pangbourne RG8 7BE	<i>OBJECT</i>
21/01769/ HOUSE	Single storey side and rear extension 3 Meadow Lane, Pangbourne RG8 7ND	<i>NO OBJECTION</i>
21/01103/ HOUSE	Proposed ground floor rear extension, balconies to two rear bedrooms and loft conversion to provide bedroom, lounge and en suite. 3 Croft Drive, Pangbourne RG8 8AN	<i>NO OBJECTION</i>
21/01068/ HOUSE	Dormer window extension to front elevation 41 Horseshoe Road, Pangbourne RG8 7JH	<i>NO OBJECTION</i>
21/01030/ LBC2	The addition of signage to the front of the property with business name and details 15 Reading Road, Pangbourne RG8 7LR	<i>NO OBJECTION</i>
21/01029/ ADV	1 sign on each of 3 elevations at front of building 15 Reading Road, Pangbourne RG8 7LR	<i>NO OBJECTION</i>
21/01155/ HOUSE	Side extension at first floor level 80 Bourne Road, Pangbourne RG8 7JS	<i>NO OBJECTION</i>
21/01232/ HOUSE	First floor extension over existing garage Holly House, Courtlands Hill, Pangbourne RG8 7BE	<i>OBJECT</i>
21/01129/ HOUSE	Garage extension and alterations Cadarache, Bere Court, Pangbourne RG8 8HT	<i>NO OBJECTION</i>
21/01289/ OUTD (adjacent parish)	Application for Outline Planning Permission With Some Matters Reserved: Erection of 4no new dwellings at Land Rear of Wakemans. Matters to be considered: Access and Layout. Land at Wakemans, Upper Basildon	<i>OBJECT</i>
21/01296/ HOUSE	Internal and external alterations to existing garage outbuilding, and erection of lean-to greenhouse extension (resubmission of Planning Permission No. 17/01768/HOUSE). Use of part of ground floor for residential purposes ancillary to the main dwelling. Courtlands, Tidmarsh Road, Pangbourne RG8 7AY	<i>NO OBJECTION</i>
21/01209/ FUL	Change of use from use class E (commercial, business and service) to use class C3 dwelling house 41 Reading Road, Pangbourne RG8 7HY	<i>COMMENTS</i>
21/01247/ HOUSE	Demolish outbuilding and flat roof area and replace with 1.5 storey extension with mezzanine. Replace oil heating with water source heat pump. Wharf House, Ferry Lane, Pangbourne RG8 7DW	<i>COMMENTS</i>
21/00339/ FUL (additional drawings)	Retrospective permission sought for the fence and gates at the front of 1 Sheffield Close and retention of land in the front garden as residential curtilage. Proposed erection of 2x brick piers on front boundary. 1 Sheffield Close, Pangbourne RG8 7GD	<i>NO OBJECTION</i>
21/01423/ LBC2	Internal refurbishment works to ground floor, first floor and loft. 45 Shooters Hill, Pangbourne RG8 7EA	<i>NO OBJECTION</i>
21/01481/ HOUSE	The proposal consists of two main parts. Firstly, to convert the current indoor pool to create a kitchen, dining and family room area within ancillary storage areas to include boot and utility space. Above a subservient first floor extension, we propose to form two bedrooms with en suites with associated dressing areas and covered balcony. Secondly, we propose a single storey extension to the current outbuilding courtyard to create a gym. Oakingham House, Bere Court Road, Pangbourne RG8 8JU	<i>OBJECT</i>
21/01491/ HOUSE	Single storey link extension, partial garage conversion and new terrace. Cornerways, 12 Sheffield Close, Pangbourne RG8 7GD	<i>NO OBJECTION</i>

APP NO:	PROPOSAL	WBC DECISION
APPLICATIONS DETERMINED BY WBC SINCE LAST ARTICLE:		
21/01068/ HOUSE	Dormer window extension to front elevation 41 Horseshoe Road, Pangbourne RG8 7JH	<i>APPROVAL</i>
21/01030/ LBC2	The addition of signage to the front of the property with business name and details 15 Reading Road, Pangbourne RG8 7LR	<i>APPROVAL</i>
21/01029/ ADV	1 sign on each of 3 elevations at front of building 15 Reading Road, Pangbourne RG8 7LR	<i>APPROVAL</i>
21/01155/ HOUSE	Side extension at first floor level 80 Bourne Road, Pangbourne RG8 7JS	<i>APPROVAL</i>
21/01209/ FUL	Change of use from use class E (commercial, business and service) to use class C3 dwelling house 41 Reading Road, Pangbourne RG8 7HY	<i>WITHDRAWN</i>
21/00339/ FUL (additional drawings)	Retrospective permission sought for the fence and gates at the front of 1 Sheffield Close and retention of land in the front garden as residential curtilage. Proposed erection of 2x brick piers on front boundary. 1 Sheffield Close, Pangbourne RG8 7GD	<i>CONDITIONAL APPROVAL</i>
21/01003/ COND1	Application for approval of details reserved by condition 4 (Hardstanding details) of planning permission 20/00111/HOUSE - Single storey granny annex and associated alterations. Covered car port. Highbeech House, Pangbourne Hill, Pangbourne	<i>APPROVAL</i>
21/01207/ NONMAT	Application for a non-material amendment following a grant of planning permission 20/02336/HOUSE - Two storey front extension, single storey side extension, new orangery in place of existing rear extension, enlargement of the roof and general remodelling. Amendments: Increase size of front gable with associated amendments to windows. Addition of one rear rooflight. Replacement of existing canopy to side of house with new smaller canopy Hill Rising, Green Lane, Pangbourne RG8 8LD	<i>APPROVAL</i>
21/00894/ COND1	Application for approval of details reserved by condition 5 (SUDS) of planning permission 21/00042/HOUSE - Single Storey extension to flank of property 153 Bourne Road, Pangbourne	<i>APPROVAL</i>
21/01114/ SCREEN	Demolition of Foinavon, reconfigured car park with construction of 17 flats and courtyards. Land to the rear of 17 Reading Road, Pangbourne	<i>NOT CONSIDERED</i> "EIA DEVELOPMENT"
21/00664/ HOUSE	Increase in height of the existing rear roof to facilitate a loft conversion. Additional opening windows above 1.7m to be added to sides of existing house. Additional roof windows to be added to existing roof (and proposed loft conversion roof). Rear/side dormer 1 Horseshoe Road, Pangbourne RG8 7JQ	<i>APPROVAL</i>
21/00819/ PASSHE	An application to determine if prior approval is required for a proposed: Rear single storey extension. Dimensions: To the eaves: 2.45m highest point: 3.25m, Depth from back wall: 4m, Length: 8.15m 27 Bourne Road, Pangbourne RG8 7JT	<i>REFUSAL</i>
21/00700/ FUL	Retrospective change of use of land to residential (C3) use and curtilage 3 Croft Drive, Pangbourne	<i>WITHDRAWN</i>

**PAULBELCHER**  
**PROPERTY SERVICES OF PANGBOURNE**  
 T 01189843722 M 07888680834  
 paulbelcherpropertyservices@yahoo.co.uk

**ALL INTERIOR & EXTERIOR WORK UNDERTAKEN  
 AND COMPLETED TO A HIGH STANDARD**

**CALL OR EMAIL FOR FREE INDEPENDENT ADVICE  
 AND A NO OBLIGATION QUOTE**

**ALL WORK FULLY INSURED - NO JOB TOO SMALL**

**Shaun Guard**  
**TV & WIFI SERVICES**

- Aerials - supplied, repaired & poor reception solved
- Satellite - Sky Q dish upgrades, discreet dish installations also foreign TV
- Internet - blackspots cured, data cables to your TVs / computer
- TVs - hung on your wall or set up & tuned
- CCTV & Door Entry - domestic installations

**OXFORD AERIALS**  
**Call Pangbourne 01189 639113**  
[www.oxfordaerials.co.uk](http://www.oxfordaerials.co.uk)

**Plant & tool hire for  
trade & DIY.**

Your first choice for the best  
equipment, service and price.  
Go to [www.didcotplant.co.uk](http://www.didcotplant.co.uk) to  
check our online catalogue.



**DIDCOT PLANT**  
 PLANT AND TOOL HIRE FOR TRADE & D.I.Y.  
[www.didcotplant.co.uk](http://www.didcotplant.co.uk)  
**01235 814000**

**MADE TO MEASURE**  
*Curtains, Roman Blinds,  
Cushions Covers, etc  
at competitive prices.*

Call Caroline on  
 (0118) 9542448  
 or 07815 610 007

**Aylett Electrical**



Kevin Aylett – your local,  
reliable, registered and  
insured electrician.

- Domestic installations
- Testing and repair
- Free quotes and advice
- All maintenance and repairs undertaken

Blossomsend Cottage Blossom Lane Theale RG7 5BE  
 Tel: 0118 9302037 Mob: 07986 033 051



**LINDSAYS**

- CLEARANCE & RECYCLING
- REMOVALS & STORAGE

- Commercial clearances • Domestic clearances
- Man and van services • Garden clearances
- Sheds demolished • Attic clearances
- Fully licensed waste carrier
- Honest and reliable

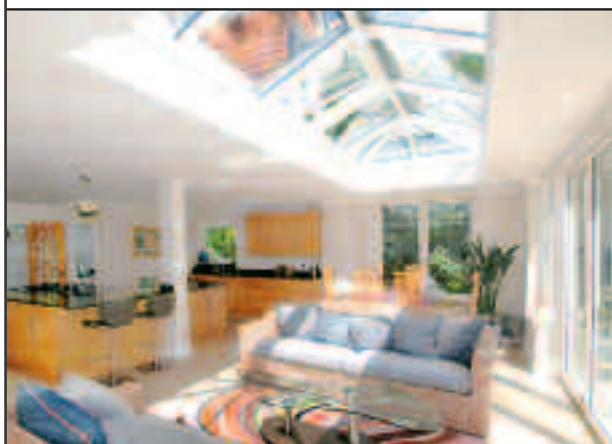
Serving domestic and business customers  
across Berkshire and the surrounding villages –  
from single items to full house clearance.

**Get in touch for a FREE QUOTE**

0118 9019935 or 07889 851 600  
[lindsaysclearance@outlook.com](mailto:lindsaysclearance@outlook.com)  
 @lindsaysclearance



## individual conservatories and orangeries by **Malbrook**



please contact us to arrange a design consultation

TEL: 020 8780 5522 • EMAIL: [info@malbrook.co.uk](mailto:info@malbrook.co.uk)

[www.malbrook.co.uk](http://www.malbrook.co.uk)

### ELECTRICIANS

#### Aylett Electrical

Kevin Aylett – your local, reliable, fully qualified and insured, domestic electrician.

0118 9302037

Mob: 07986 033 051

### FUNERAL SERVICES

#### A B Walker

See main advert  
on page 7.

Thatcham – 01635 873672

Tilehurst – 0118 304 0068

Reading – 0118 957 3650

### GARDEN SERVICES

#### Gardens by Ross Agar

Design and maintenance.

0118 971 2340

0793 948 5919

### MOLES? Are they ruining your lawn?

Call MoleMan Mark to get rid of them.

*British Mole Catchers Register accredited.*

07887 480014

### JEWELLERY REPAIRS

#### Sandy Ebdon-Jackson B.A.

Re-stringing, re-designing, replacing lost parts etc.

Please message description and photo of required  
repair for quote.

07789 238557

### LAUNDRY/DRY CLEANERS

#### Launderclean

4 Station Road, Pangbourne.

Launderette and dry cleaners.

0118 984 2197

### PAINTER

#### Andy The Painter

Interior and Exterior Painting.

Fully Qualified and Insured.

07933 266874

[andyblack007@outlook.com](mailto:andyblack007@outlook.com)

### PET CARE

#### Purley Pet Care

Pet boarding, walking and feeding for happy paws  
and waggy tails. Fully licenced and insured. Boarding  
or day care. Big animals or small. References available  
on request. Call Joan.

07867 676675

[joanjack@sky.com](mailto:joanjack@sky.com)

### PLUMBER & BATHROOM FITTER

Happy to undertake the smallest of jobs.

Call Richard.

0771 333 6661

0118 967 6384

### PROPERTY MAINTENANCE

#### Duncan Agar

All aspects of maintenance including gutter cleaning  
and repairs, broken glass, painting, etc.

0118 9712340

07787 552983



# USEFUL NUMBERS

## USEFUL NUMBERS

POLICE	Non-emergency number	101
CRIMESTOPPERS		0800 555 111
PANGBOURNE PARISH COUNCIL (at Village Hall)		
	<a href="http://www.pangbourne-pc.gov.uk">www.pangbourne-pc.gov.uk</a>	0118 984 1118
	Parish Office opening hours – Mon am, Tues am, Thurs pm	
CHAIRMAN OF PANGBOURNE PARISH COUNCIL		
	Peter MacIver – <a href="mailto:peterpangbourne@gmail.com">peterpangbourne@gmail.com</a>	07768 004844
VICE CHAIRMAN OF PANGBOURNE PARISH COUNCIL		
	John Higgs – <a href="mailto:jhiggs@pangbourne-pc.gov.uk">jhiggs@pangbourne-pc.gov.uk</a>	0118 984 4758
CLERK TO PANGBOURNE PARISH COUNCIL		
	Becky Elkin – <a href="mailto:clerk@pangbourne-pc.gov.uk">clerk@pangbourne-pc.gov.uk</a>	0118 984 1118
WEST BERKSHIRE COUNCIL		
	Switchboard	01635 551111
CITIZENS ADVICE BUREAU		01635 516 605
MP FOR READING WEST		
	Alok Sharma	0118 941 3803
SURGERY		0118 984 2234
	Emergency out-of-hours (6.30pm – 8am)	111
PHARMACY		0118 984 2935
LIBRARY		0118 984 4117
PANGBOURNE AND DISTRICT VOLUNTEER CENTRE		0118 984 4586
	Office closed until further notice due to Covid19 restrictions.	
PANGBOURNE PARISH PRIEST		
		0118 984 2928
FLOOD WARDENS		
	Kay Lacey	07889 231136
	Stephen Billyeald	0118 984 3368

## SUBMISSION OF ARTICLES\* AND ADVERTS†

	COPY DEADLINE	DISTRIBUTED
Issue 165 – November/December	8th October	28th October
Issue 166 – January/February 2022	3rd December	6th January
Issue 167 – March/April 2022	4th February	24th February

Please send all submissions to [pangbourne@heraldgraphics.co.uk](mailto:pangbourne@heraldgraphics.co.uk).  
Please bear in mind the distribution date when including dates in your articles.  
(\*receipt of an article is not a guarantee of inclusion; †payment is required in full prior to publication)

# BEN HEATH

— BEAUTIFUL INTERIORS —

LOCALLY MADE IN NEWBURY

KITCHENS • BEDROOMS • BATHROOMS

LIVING ROOMS • DINING ROOMS

CURTAINS AND BLINDS

FABRICS • FLOORING

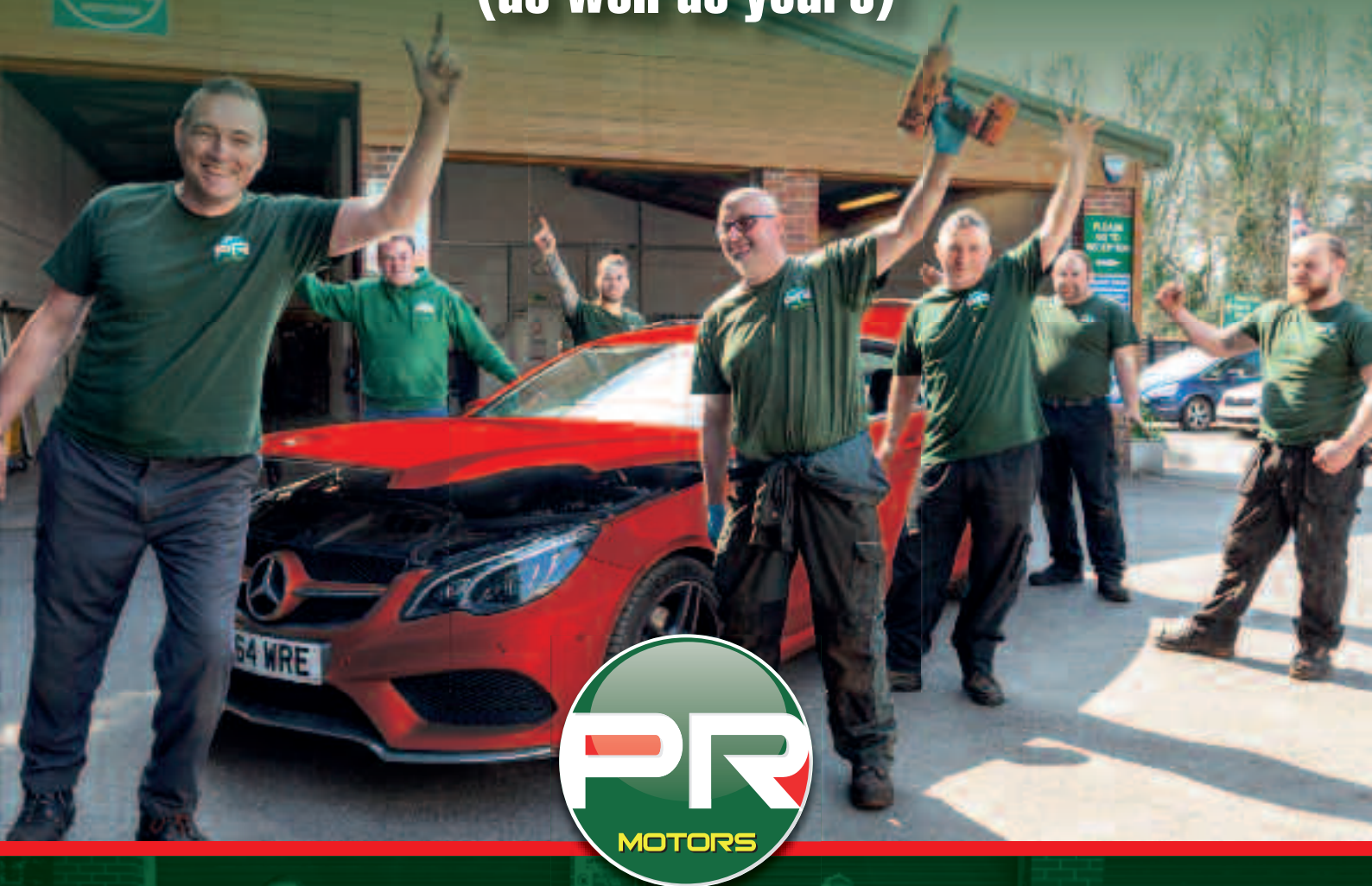
LIGHTING

Raceview House, Hambridge Road, Newbury, RG14 5SA.  
T: 01635 523123 E: [sales@benheath.com](mailto:sales@benheath.com)



# We care for a car's wellbeing

(as well as yours)



Celebrating over 30 years of committed, quality service in our community

**Email:** [enquiries@prmotors.biz](mailto:enquiries@prmotors.biz) **Web:** [prmotors.biz](http://prmotors.biz)

**Tel: 0118 984 4889**



Opening times: **Mon-Fri: 7:30am - 5:30pm**