


Patient Cases

 **45-90 min.**



Basic

- Routine medications to manage chronic conditions
- One route (oral)
- Review orders, including post-operation recovery medications

John Larsen, 46

Intermediate



- New medications to manage acute condition
- Two routes (IV and oral)
- Review orders, including medications to manage type 2 diabetes and allergy-induced asthma

Tina Jones, 28


Complex

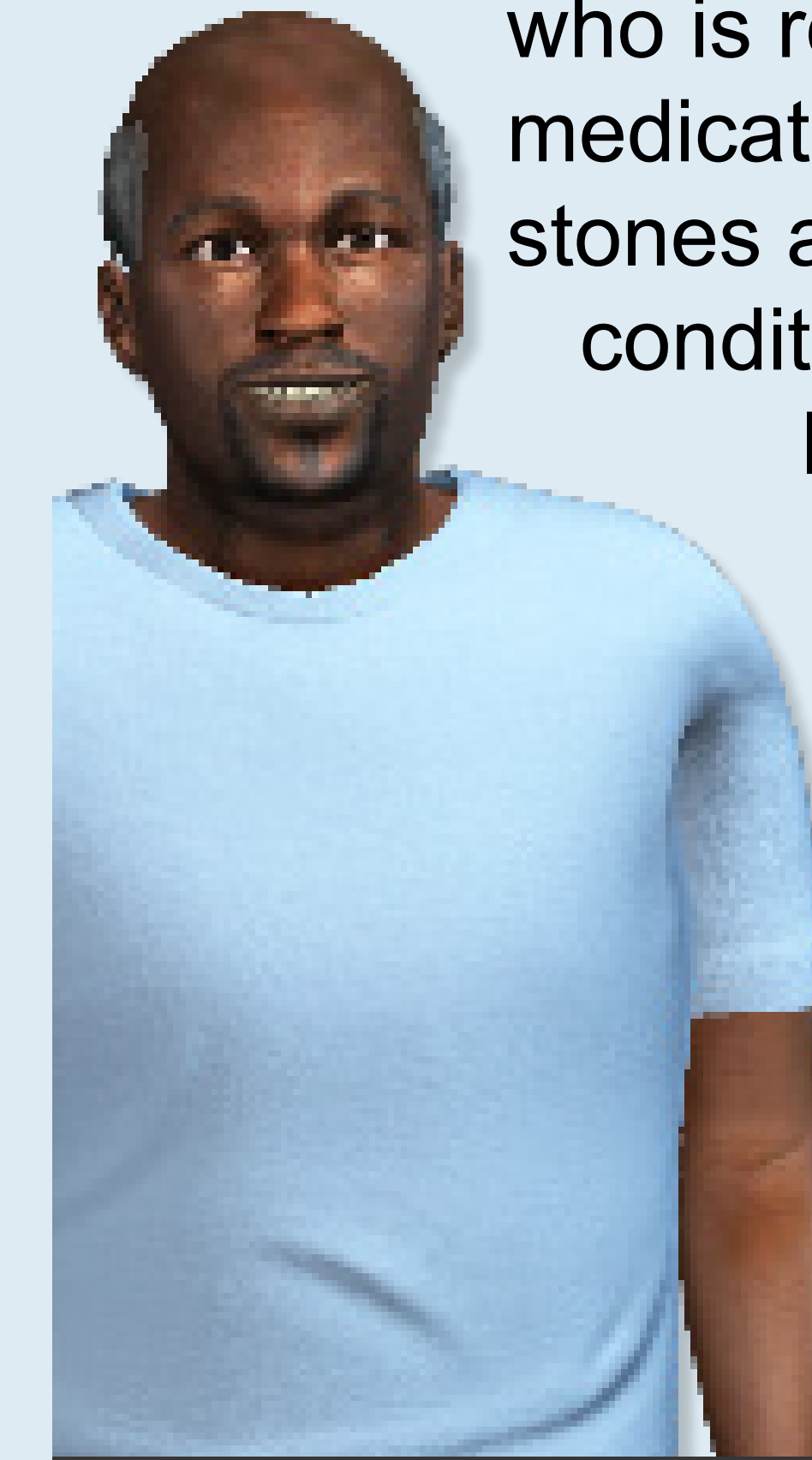


- Administer 8 medications at once to manage acute and chronic conditions
- Three routes (IV, oral, and injection)
- Review 18 medication orders
- Identify drug interactions
- Respond to an adverse effect

Doris Turner, 86

Unguided Assessment

 **45 min.**



Edward Carter is a 65-year-old African American man who is receiving medications to treat kidney stones and chronic conditions, including kidney disease and high blood pressure.

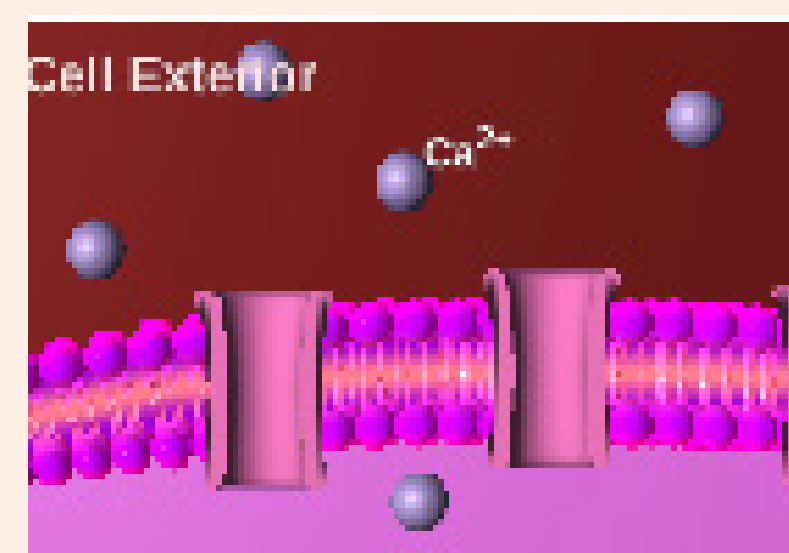
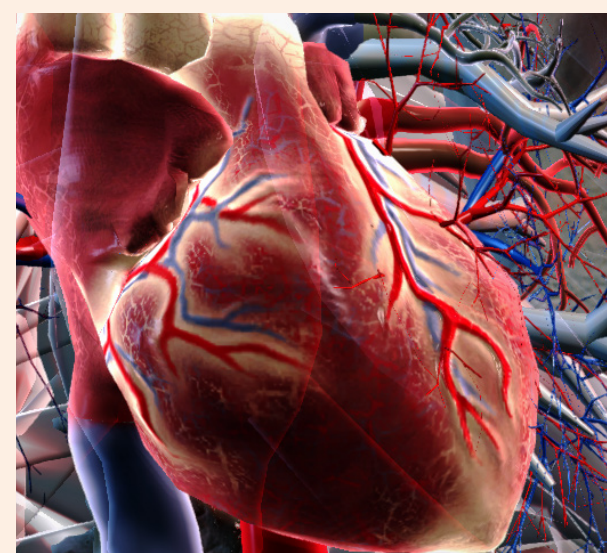
This unguided scenario provides the opportunity to synthesize skills in a high-fidelity clinical setting.

Edward Carter, 65

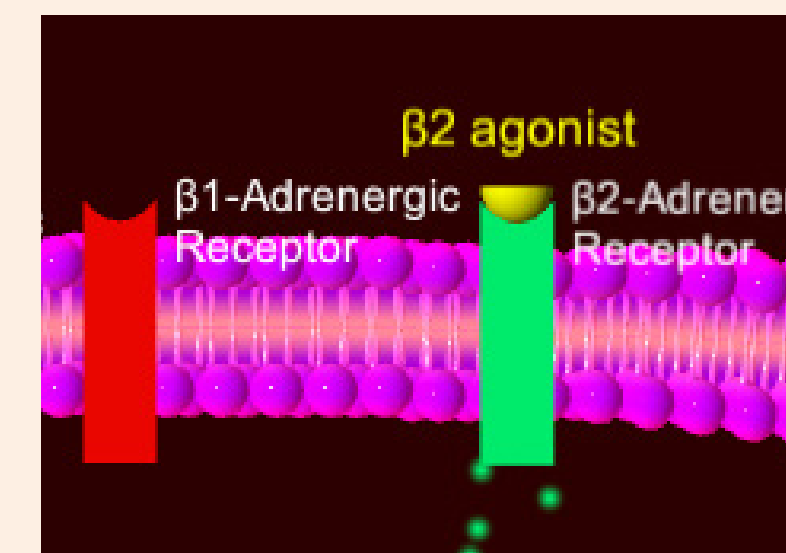
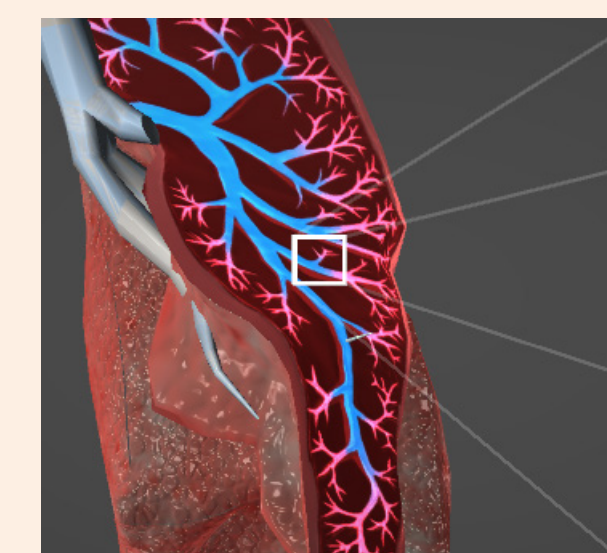
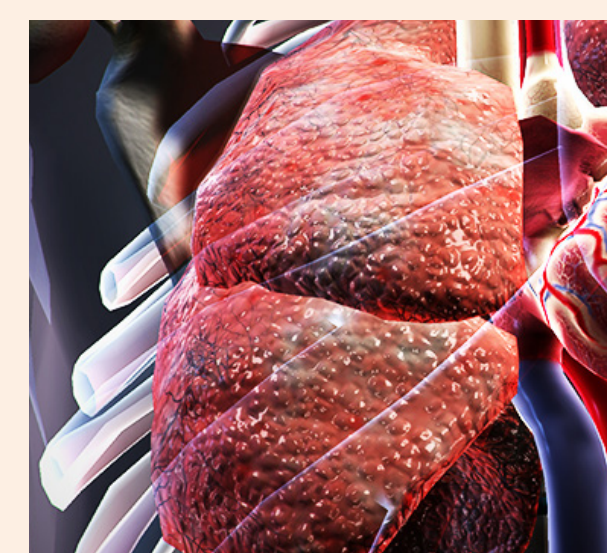
Concept Labs

 **25 min.**

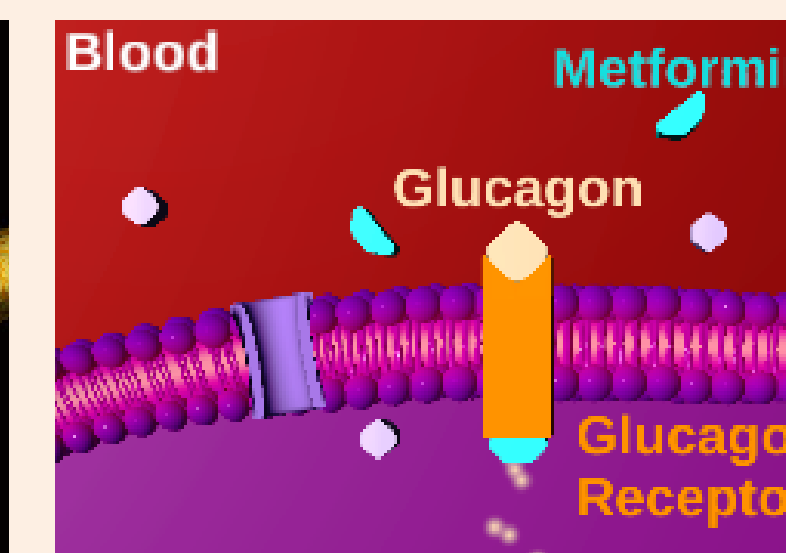
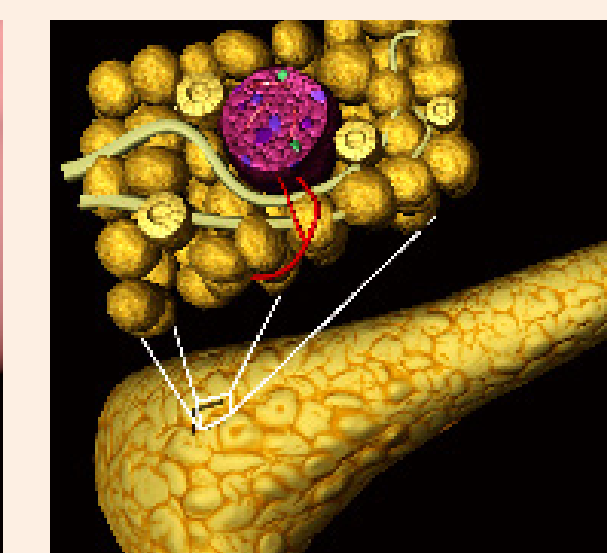
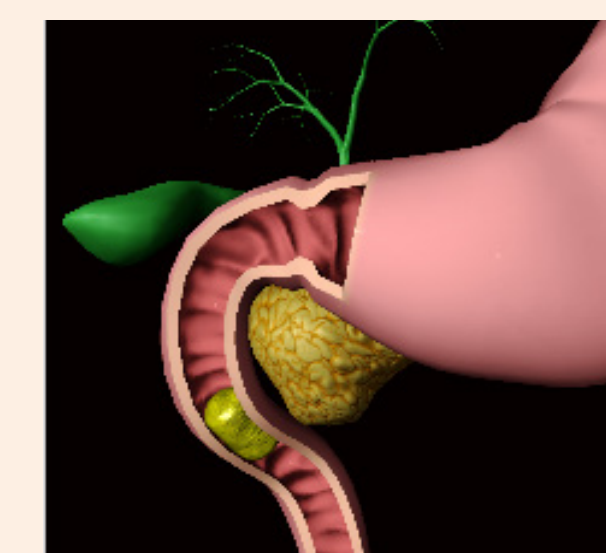
Antihypertensives



Anti-Asthmatics



Antidiabetics



Med. Math

 **30 min.**

Basic

- 18 questions
- Two-strike scoring, graded on first attempt
- Worked example for each problem

Intermediate

- 15 questions, including IV flow
- Two-strike scoring, graded on first attempt
- Worked example for each problem

Complex

- 15 questions, including correct days' supply
- Two-strike scoring, graded on first attempt
- Worked example for each problem

Intermediate

Assess clinical reasoning skills using our **Student Performance Index™**.

Clinical reasoning skills will be paramount in this simulation as students must use their knowledge of the drugs administered and due to assess the patient effectively and ensure safety.