

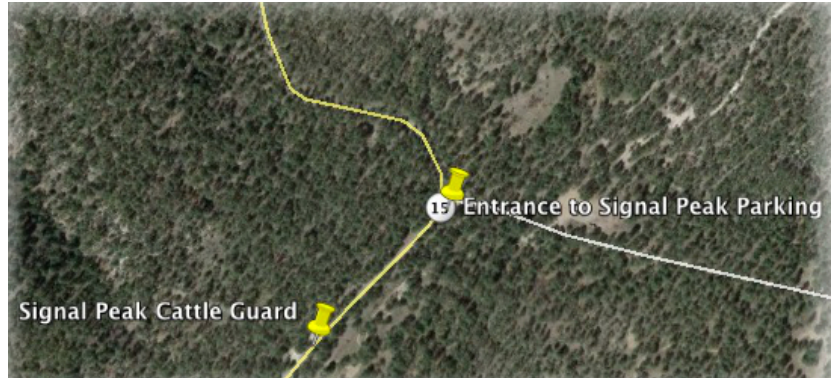
TRAIL NAME: MEADOW CREEK LOOP (ABOUT 5 MILES)

Relevant USGS map: Twin Sisters, 1999

Trail rating: 3 = single track with small stream crossing, rolling hills or small elevation changes, some short steeper slopes

Directions:

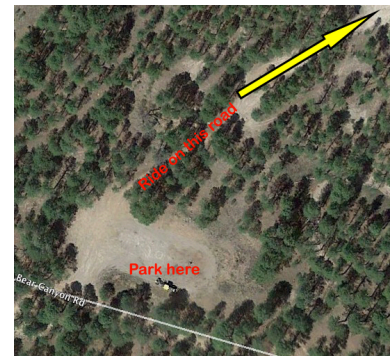
1. Drive north on NM Hwy 15 (Piños Altos Rd) through the town of Piños Altos. At the north end of town, just beyond Cross Mountain Rd (on right), Hwy 15 intersects with Main St (Yes intersection on left). Set your trip meter here.
2. Continue on Hwy 15 for about 7 miles (past Cherry Creek and McMillan campgrounds) to Forest rd 154 (a.k.a. Signal Peak Rd [per the locals], a.k.a. Bear Canyon Rd [per Google Earth]). Turn right.
3. Continue a short distance to parking entrance on left.



Parking area has lots of room for rigs, with plenty of space to turn around. A roads that is open to vehicles branches off the parking area. Don't block it with your rig.)

Trail Information:

Meadow creek is a beautiful and relatively short trail, suitable for novice and timid riders.



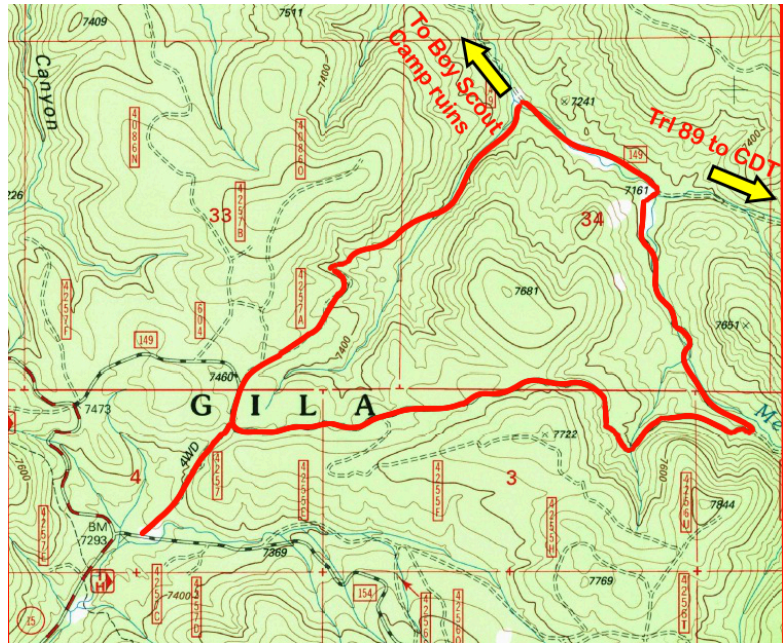
- Start on the two-track at the northwest end of the Signal Peak parking area.
- Ride the two-track (Trail 4257) (which is steep and slippery in spots) about 1/3 mile to the intersection with Meadow Creek Rd (per Google Earth) (a.k.a. Forest Road 149 [per the Forest Service]). Turn left.
- Proceed about 0.13 mile to trail 4257A (a.k.a. Sapiello Trail [per Garmin BaseCamp]) on right. Trail marker for 4257A might not be there, so look for the first right onto an obvious trail.
- Once on 4257A, when confronted with a fork in the trail, bear right to stay on 4257A.
- 4257A meanders downslope another 1.25 miles, alongside and crossing a pretty little stream. The trail then crosses Meadow Creek itself and joins Meadow Creek Rd. You can see the road from the far side of the creek, but you might have to feel your way across the creek to get there.
- Across the creek, Meadow Creek Rd travels left and right—take your pick. To the left, the road travels downstream to the ruins of a Boy Scout camp, where the road ends and from which an ambiguous trail continues downstream and eventually peters out. To the right, Meadow Creek Rd goes upstream and intersects Trail 89 on

TRAIL NAME: MEADOW CREEK LOOP (ABOUT 5 MILES)

the left, from which you can ride to the Continental Divide Trail by way of Aztec Park.

- If you go to the right, ride on Meadow Creek Rd past Trail 89 to circle back to Trail 4257.
- Turn left on Trail 4257 and ride back down to the Signal Peak parking area.

The image at right was excerpted from the USGS 1999 Twin Sisters map. It shows the route from the Signal Peak trailhead.



More →

TRAIL NAME: MEADOW CREEK LOOP (ABOUT 5 MILES)

