

Mouse Anti-Cytokeratin 4 [MD94]: MC0400, MC0400RTU7

Intended Use: For Research Use Only

Description: Cytokeratin 4 (CK4) is a 59 kDa intermediate filament protein associated with cytokeratin 13. It is expressed in suprabasal cells of non-keratinized stratified squamous epithelium of esophagus, cornea, anus, larynx, pharynx and tongue. A mutation in CK4 gene causes white sponge nevus. A decreased expression of CK4 is associated with head and neck squamous carcinoma. It is helpful in differentiation of squamous cell carcinoma of esophagus origin from thyroid origin.

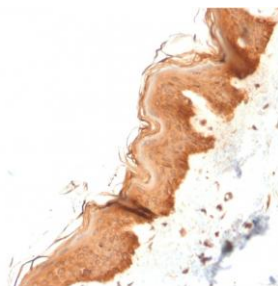
Specifications:

Clone: MD94
Source: Mouse
Isotype: IgG1k
Reactivity: Human
Immunogen: Recombinant fragment aa 181-292 of human CK4 protein
Localization: Cytoplasm
Formulation: Antibody in PBS pH7.4, containing BSA and $\leq 0.09\%$ sodium azide (NaN₃)
Storage: Store at 2°- 8°C
Applications: IHC, Flow Cyt., IF
Package:

Description	Catalog No.	Size
Cytokeratin 4 Concentrated	MC0400	1 ml
Cytokeratin 4 Prediluted	MC0400RTU7	7 ml

IHC Procedure*:

Positive Control Tissue: Esophagus, cervical squamous cancer
Concentrated Dilution: 50-200
Pretreatment: Tris EDTA pH9.0, 15 minutes using Pressure Cooker, or 30-60 minutes using water bath at 95°-99°C
Incubation Time and Temp: 30-60 minutes @ RT
Detection: Refer to the detection system manual
* Result should be confirmed by an established diagnostic procedure.



FFPE human skin stained with anti-CK4 using DAB

References:

1. Proteomic profile of keratins in cancer of the gingivo buccal complex: Consolidating insights for clinical applications. Fulzele A, et al. J Proteomics 91C:242-258, 2013.
2. Down-regulation of keratin 4 and keratin 13 expression in oral squamous cell carcinoma and epithelial dysplasia: a clue for histopathogenesis. Sakamoto K, et al. Histopathology 58:531-42, 2011.
3. Comprehensive keratin profiling reveals different histopathogenesis of keratocystic odontogenic tumor and orthokeratinized odontogenic cyst. Aragaki T, et al. Hum Pathol 41:1718-25, 2010.

Doc. 100-MC0400
Rev. A