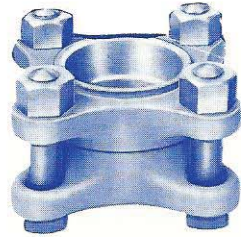
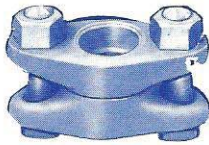


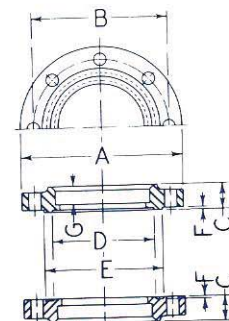
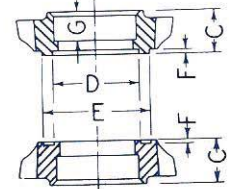
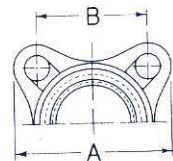
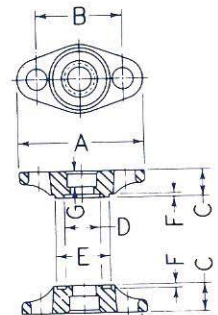
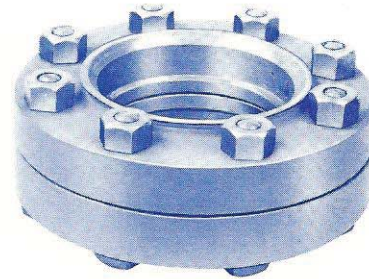
WOLF-LINDE AMMONIA FLANGES

AMMONIA FLANGES ARE USUALLY OVAL (2-BOLT), 1/4" THRU 1". AS SHOWN BELOW, THERE ARE SQUARE AMMONIA FLANGES (4-BOLT), WITH SIZES RANGING FROM 1-1/4" THRU 4". THE ROUND AMMONIA FLANGE BEGINS AT 5" AND GOES THRU 12".

ALL OF THE FLANGES PICTURED BELOW ARE SOCKET WELD FLANGES.



THE PIPE IS FITTED INTO THE SOCKET AND WELDED



STYLE OF FLANGE	SIZE OF PIPE INCHES	CODE NO. OF FLANGE	A	B	C	NOMINAL TONGUE & GROOVE DIMENSIONS			G	BOLTS		WT. OF SINGLE FLANGE ONLY, LBS.	WT. OF FLANGE UNION, LBS.
						D	E	F		NO.	SIZE, INCHES		
			OUTSIDE SIZE OF FLANGE, INCHES	CENTER OF FLANGE BOLTS, INCHES	THICKNESS OF FLANGE, INCHES	I.D., INCHES	O.D., INCHES	DEPTH, INCHES	DEPTH OF SLIP-ON SOCKET, INCHES				
OVAL	1/4	4265W	3 5/8	2 3/8	7/8	1 5/16	1 7/16	3/32	7/16	2	1/2	3/4	2
	3/8	4264W	3 5/8	2 3/8	7/8	1 5/16	1 7/16	3/32	7/16	2	1/2	3/4	2
	1/2	4263W	3 5/8	2 3/8	7/8	1 5/16	1 7/16	3/32	7/16	2	1/2	3/4	2
	3/4	832W	4 3/8	3	1 5/16	1 1/4	1 7/8	1/8	1/2	2	5/8	1	3
	1	831W	4 3/8	3	1 5/16	1 3/8	1 7/8	1/8	1/2	2	5/8	1	3
SQUARE	1	2800W	3 1/2	2 3/8	1 1/16	1 3/4	2 3/8	1/8	9/16	4	1/2	2	5
	1 1/4	2793W	3 1/2	2 3/8	1 1/16	1 3/4	2 3/8	1/8	9/16	4	1/2	1 3/4	4 1/2
	1 1/2	4262W	4	2 3/4	1 1/8	2	2 3/4	1/8	5/8	4	1/2	2 1/4	5 1/2
	2	489W	4 1/2	3 1/16	1 1/8	2 1/2	3 1/4	1/8	5/8	4	5/8	2 1/2	7
	2 1/2	779W	5 1/2	3 7/8	1 1/2	3	3 3/4	1/8	1	4	3/4	5	12 1/2
	3	30W	6	4 1/8	1 9/16	3 5/8	4 3/8	1/8	1 1/16	4	3/4	6	15
	3 1/2	823W	7	5	1 7/8	4 3/4	5 1/2	1/8	1 3/8	4	7/8	10	24
	4	40W	7	5	1 7/8	4 3/4	5 1/2	1/8	1 3/8	4	7/8	9	22
ROUND	5	433W	10 1/4	8 1/2	1 3/4	6 1/8	7 1/4	1/8	1 1/4	8	3/4	20	47
	6	1038W	11 1/4	9 1/2	1 3/16	7 1/8	8 1/4	1/8	1 5/16	8	3/4	24	55
	8	1439W	14 1/4	12	2	9 3/8	10 1/2	3/16	1 1/2	8	7/8	40	90
	10	1929W	16 1/2	14 3/8	2 1/4	11 3/8	12 5/8	3/16	1 3/4	12	7/8	60	135
	12*	1591W	20 1/2	17 3/4	2	13 1/2	15	3/16	2	16	1 1/8	105	250

*12" flange is slip-on style.

Socket welding reducing flanges are available in all sizes up to and including 2".

Blind flanges are available in all sizes up to and including 6". Blind flanges in sizes 2 1/2" and larger are made from semi-steel gray iron castings.