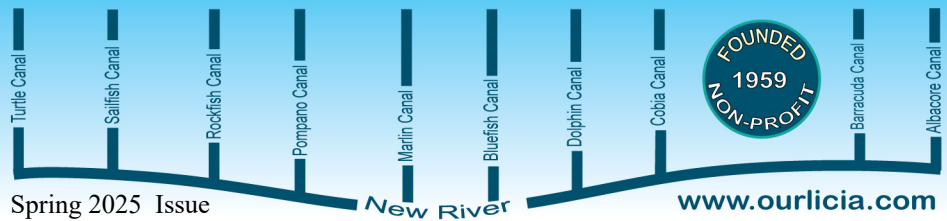


Lauderdale Isles Civic Improvement Association, Inc.



The City Commission Passes the Building Height Ordinance: 25 FEET



By Eric Silva

On April 15th, the City Commission adopted an ordinance to clearly define the building height limit in Lauderdale Isles, Melrose Park, Riverland Village, Riverland Manors, and Chula Vista. In the zoning code these areas are known as the “Annexed Areas”. The new zoning code clearly defines our height limit as 25 feet.

Since the time of annexation in 2002, the building height limit has been open to interpretation by city staff. One section of the code stated two stories while another left the maximum story height open to interpretation. Some building permit plans were denied because they exceeded 20 feet while others were approved at 27 feet. Especially in older neighborhoods with homes that constantly need to be maintained and improved, certainty in our property rights is critical.

Almost three years ago, the City of Fort Lauderdale Board of Adjustment (BOA) realized the building height limit was a problem. On October 12, 2022, the BOA requested that the city review the zoning code height limit in Lauderdale Isles to provide a code that addresses current building code requirements such as insulation and measures to fortify homes against hurricanes, as well as, provide the residents with a code that is easy to understand and not open to interpretation. Per the BOA’s recommendation, on November 1, 2022, the City Commission directed staff to address this issue.

At the February 2024 Planning and Zoning Board meeting, staff presented a code amendment with a 35-foot height limit for all the neighborhoods in the Annexed Areas except for Melrose Park which had a 20-foot limit. Although the Board supported this code amendment, one Board member requested that staff conduct additional public outreach in our neighborhood. In preparation of our May 16th General Meeting, the Lauderdale Isles newsletter provided background information on the issue and graphics comparing the height of a single-story home, tri-level home, and a 35-foot home.

At the May 16, 2024 LICIA General Meeting, city staff explained that the current height limit was two stories but no more than 20 feet and the proposed 35-foot limit would make it uniform with the rest of the city. After the discussion, a ballot was distributed to attendees with four options and 25 feet received the most support with 55% of the votes. During the past year city staff met with the other neighborhoods in the Annexed Areas and they also supported the 25-foot limit. This is a reasonable limit that preserves the character of our neighborhood while providing homeowners with flexibility to construct a second story.

Lauderdale Isles Community Center Update



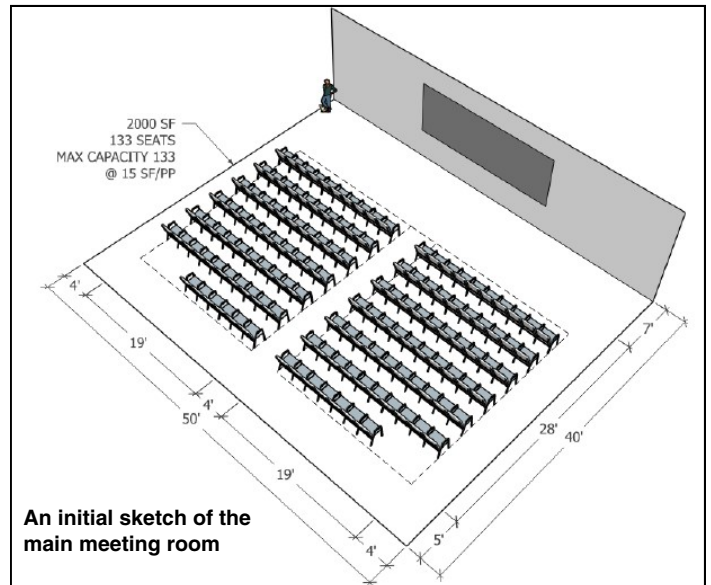
By Earl Prizlee

Community Center Project Update

We’re excited to share an update on the progress of the new community center! The project is currently in the design phase and will soon enter the City’s Development Review Committee (DRC) process—just like any other development. This important step ensures that all aspects of the project are thoroughly reviewed by departments including Building, Engineering, Landscape, Police, Sanitation, and Transportation & Mobility.

As part of the design process, we’re currently evaluating options for the sanitary system, including whether to move forward with a lift station design or a gravity line. At the same time, our team is working closely to refine the interior layout to ensure the multipurpose space is flexible and functional for a variety of community needs.

We look forward to keeping you informed as the project moves ahead. Stay tuned for more updates in upcoming newsletters and public meetings!



As discussed at the General Meeting in March, the front of the building will face to the west, toward SR 441

INSIDE THIS ISSUE:

**** Aquaglades Park ** Restaurants by Boat ** Snook Fishing ** Duck Key Lane Sign ** Chief Waterway Officer ****

Over the years, our Team has sold, listed or leased
over **141** Lauderdale Isles homes.



The Gordon Group

SERVING BROWARD COUNTY FOR OVER 35 YEARS

We KNOW the area.
We KNOW the homes.
We KNOW the waterways.

RE/MAX
Consultants Realty I

Jeannie DeRolf, Realtor 954-850-2447

Julie Gordon, Broker Associate 954-445-3345



SPRING GENERAL MEETING

Thursday, May 15

7:00pm

THIS WILL BE A VIRTUAL MEETING

Lauderdale Isles Residents Only — Meetings are recorded

FOR THE ZOOM INFO, GO TO:

ourlicia.com

Important: Our Lane Signs

One of the very impressive aspects of our neighborhood is our lane signs along Riverland Road. They set us apart from other neighborhoods in the City. As you will read in this newsletter, the Duck Key Lane sign was knocked down in a car accident in April and the sign is gone. If we had been notified right away, we would have had someone from LICIA over there immediately to retrieve the sign so we could have it repaired. Having a new sign made is going to be a very expensive proposition. If you ever see anything causing damage to one of our lane signs (like careless contractors), please call one of the LICIA Board Members listed on the back page of this newsletter right away. Our lane signs are unique. Let's make sure we don't lose any of them.

You can pay your 2025 dues now

Our fiscal year now runs from January through December. While you're thinking about it, why not pay your 2025 dues now? It's only \$20.

You can easily pay by check or Zelle.

Your contribution helps LICIA in our efforts to improve and protect our neighborhood.

By paying your dues, you'll be a Member in Good Standing, and you can participate in General Meetings.

Plus you'll receive our *Isles Insider* emails.

And your dues help pay for this quarterly newsletter and the beautiful holiday lane sign decorations

Drop your check in the mail, using the handy coupon on the back page of this newsletter

Pay using



Scan this QR code from your bank app, or search for email: licia.treasurer@gmail.com
Please send an email to licia.treasurer@gmail.com with your street address

Note:
We are no longer accepting payment by Venmo

Need to contact LICIA?

Just send an email to laudisles@gmail.com

Are you a budding author? Write an article for this newsletter! Anything about the neighborhood. Email it to laudisles@gmail.com Deadline for submission: 20th of month prior to publication.

Lauderdale Isles Civic Improvement Association, Inc., PO Box 121255, Fort Lauderdale, FL 33312



Advertising Rates: Our newsletter is published quarterly

| | One Time | Half Year | Full Year |
|-----------|----------|-----------|-----------|
| Full Page | \$125 | 238 | 450 |
| Half Page | 90 | 171 | 342 |
| Qtr Page | 60 | 114 | 216 |
| Bus. Card | 35 | 67 | 126 |

Make checks payable to LICIA & send to our PO Box address prior to publication. The deadline for submission is the 20th of the month prior to publication. Newsletter is published quarterly in Feb, May, Aug, & Nov. Must be paid in full to receive discount. Ad must be ready-to-go as jpg or pdf. Members in good standing (paid dues) are allowed a free, two-line ad per person for personal property, subject to space availability.

ACTION IN THE ISLES

You've just got to wonder how people obtained their drivers' licenses.

April 16th Duck Key & Riverland

The Duck Key Lane sign was knocked off its base in a two car accident that morning. Before anyone notified LICIA so the sign could be picked up, someone made off with it. To make matters worse, we obtained the traffic crash report from FLPD and contacted the driver's insurance company. The driver had minimal coverage and we will receive no where near the amount that a replacement sign will cost.



The sign is gone, all that's left is the base

April 27 - Lauderdale Isles Landing

Just before midnight, a driver who was apparently doing donuts in the parking lot lost control, drove over the parking curbs and smashed into the wall on the east side of the park. Serious damage occurred to the neighbor's property behind the wall.



Andros Neighbors Reclaim Quiet Nights

or

LICIA and Commissioner Sorensen Silence Early-Morning Trash Ruckus at New River Middle School

By Trent Simpson

LICIA Staff Acoustician



We all know the school traffic can be burdensome for the neighborhood. Recently, a lesser known but equally disruptive issue at New River Middle School was brought to LICIA's attention. Residents on Andros reported being woken up in the early hours by loud noises from trash collection at the school. The trash trucks were operating between 3:30 and 5:30 AM multiple times a week, and occasionally on Saturdays, causing loud banging from dumpsters and incessant beeping as the trucks maneuvered. All the noise was waking the residents in the middle of the night. Some tried to contact the school; others tried the school board—efforts that, unfortunately, did not produce a favorable resolution. Frustrated, they turned to LICIA.

Upon being made aware of the issue, LICIA reached out to our white hat commissioner, Ben Sorensen. Ben immediately took up the issue, reaching out to the school board. At first, the school board was slow to respond, but through the persistence of LICIA and our fearless commissioner, we tracked down the right contact who could assist in correcting the issue. The school board was able to connect with their vendor and advised them that trash pickup should take place during normal school hours. The vendor has since adjusted their schedule, and the affected residents can rest easier...for now.

YOUR LAUDERDALE ISLES NEIGHBOR & PLUMBER



RD PLUMBING
& SEWER, INC.

CFC1429652

A FULL SERVICE & REPAIR COMPANY

FREE ESTIMATES

EXPERIENCED & PROFESSIONAL QUALITY GUARANTEED

CONTACT US TODAY! 954-707-9594

Web: www.rdplumber.com

Local History: Aquaglates Park



By Dawn Hanna,
Senior Staff Historiographer

From 1957 to 1974, Aquaglates Park was one of Fort Lauderdale's most popular roadside attractions.

Known as the "Showplace of the Everglades," it was located on the south side of the New River, just west of where Secret Woods Park is today. The property is now home to a marina at 3001 W State Rd 84, Fort Lauderdale.

At approximately 3.8 acres in size, Aquaglates was home to a variety of animals, including flamingos, monkeys, deer, otters, a Florida panther, an elephant, alligators, and other bird species. In



addition to the wildlife exhibits, the park offered several attractions, such as alligator wrestling, Seminole Indian vendors, and boat tours. The park boasted elevated walkways, "the world's largest freshwater aquarium", a snack bar, and a gift shop.



The park closed in 1974 after nearly two decades of operation. It was owned and operated by the McLellan family, who leased the property from Dr. and Mrs. S. J. Wilson and Mr. and Mrs. G. M. Davis—partners in the Florida Bass Farm and Aquaglates Tourist Attractions.

Bill McLellan Jr. and his wife, Betty Eileen McLellan, managed the gift shop, while their son, William "Bill" C. McLellan III, was the park's main alligator wrestler. Bill III performed up to eight shows a day and also took on the responsibility of building the animal

enclosures and caring for the park's animals outside of visitor hours. His wife, Nancy Elizabeth McLellan, was the announcer for the shows.

The McLellan family lived on the property: Bill Jr., Betty, and their daughter, Patricia "Patsy" Ann McLellan, lived in an apartment attached to the gift shop. Bill III, his wife, and their four children lived in a trailer near the shop.

Born on October 8, 1933, in Oak Park, Illinois, Bill McLellan III moved to South Florida at age 13. There, he learned the art of alligator wrestling from his uncle, Howard Roloff, who worked at the Chimpanzee Farm in Dania. By the time Bill was 15, he was



Bill III did up to eight shows per day

also employed at the Chimpanzee Farm as an alligator wrestler. In the late 1950s, the McLellan family opened Aquaglates, where Bill III became the face of the attraction, performing daily as the main alligator wrestler. In addition to his wrestling duties, he served as the park's primary animal caretaker. Bill III later became an undercover officer with the Wildlife & Game Commission, and many of the animals at Aquaglates were rescues or orphans from the Everglades that he personally cared for.

Betty McLellan, Bill III's mother, was a true heroine in her own right. Along with her husband Bill Jr., she raised three children: William "Bill" C. McLellan, III (October 8, 1933); Patricia "Patsy" Ann McLellan (February 17, 1935); and James "Jimmy" Henry McLellan (April 10, 1936). Patsy was born with a form of Down syndrome and required constant care, living with her mother throughout her life.

In 1947, the McLellan family moved to South Florida, following the tourist industry that her brother Howard was involved with. Betty transferred her job from Illinois Bell to Southern Bell, eventually becoming the director of public relations for what we now know as AT&T. She had a 30-year career with the company, working full-time.



During the late 1950s, Betty helped her husband and son develop Aquaglates, assisting with day-to-day operations. She answered phones during the day and restocked the gift shop and food supplies for tourists at night. After Bill Jr.'s passing in 1970, Betty continued her work at both Southern Bell and Aquaglates, while also caring for her daughter, Patsy.

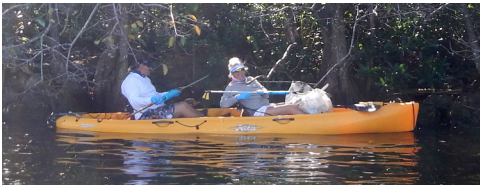
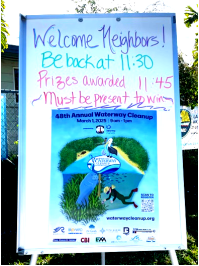
With the opening of Disney World in Orlando in 1972, the demand for small, family-run attractions waned. As tourism trends shifted, Aquaglates lost its popularity and was forced to close in 1974. While the exact fate of the animals is unclear, it is believed that they were either released into the wild or donated to other animal care organizations.

In 1977, the land was sold to a marina, which demolished the park and filled in the central lake, forever changing the area where Aquaglates once thrived.



THE 48TH ANNUAL MIASF WATERWAY CLEANUP ON MARCH 1ST

Once again, our great group of volunteers at Lauderdale Isles Landing did a terrific job of cleaning the waterways of Lauderdale Isles during the 48th Annual Marine Industries Association of South Florida Waterway Cleanup. With 18 boats and kayaks, and 64 eager volunteers, the trash cans soon started to fill with the trash that was brought in. Eight gift certificates to Flanigan's were awarded to the teams who brought in some very incredible finds. Probably the most unique item found was a jar full of spaghetti (we won't say who took it home for lunch). Sight sponsorship, prizes, and breakfast snacks were provided by the Lauderdale Isles Water Management District and the Lauderdale Isles Civic Improvement Association. Thanks to all our terrific participants! We'll see you at the November Lauderdale Isles Cleanup. *Lauderdale Isles is one of a very few neighborhoods that have participated in all 48 of the annual MIASF Waterway Cleanups.*





a neighborly company

(954) 757-6069

charlotte@groundsguys.com

TRUST YOUR LANDSCAPER

trust your agent

Why Choose Me?

Located In Lauderdale Isles!

Attention to Detail

Community-Focused

Reliable & Communicative

Landscaping Services:

Lawn Care and Maintenance

Garden Design and Irrigation

Holiday & Landscape Lighting

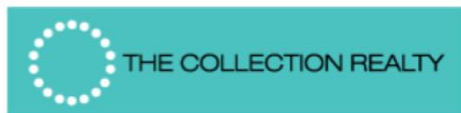
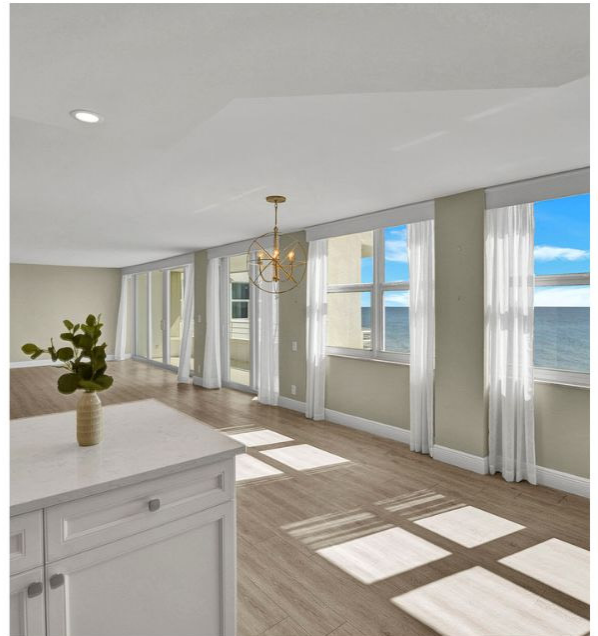
Real Estate Services:

Buying and Selling Homes

Property Valuations

Rental Assistance

Let me help you enhance your property's beauty or
guide you through your real estate journey with
confidence and ease. Whatever you need,
I'd love to work with you!



(858) 230-0715

charlotte@thecollectionre.com

LIWMD UPDATE

Water Quality: The Broward Environmental Lab tests the water at Bradford Marine across from Andros Lane for bacteria levels quarterly. A reading over 140 is "bad;" our last four readings were: 63.6, 59.1, 89.6, 112. We believe that the water quality in Lauderdale Isles is the best in the entire City.

Incredible Snook Fishing: Our excellent water quality is one of the reasons that snook fishing in our canals continues to be phenomenal this year. And lots of nice slot-sized ones are being caught.



Layce caught this beauty on the Cobia Canal



Zane with ANOTHER one from the Bluefish Canal

Snook Season closes June 1. Slot size: 28"-32". Bag limit: 1 per day

Fertilizer Ban: The City's ban on applying fertilizer in the summer starts on June 1. See the flyer in this newsletter. It is critical for us to comply with this ban, to help prevent algae blooms in our waterways. Also, lawn debris is known to contribute to these blooms. Please do your best to keep our canals as clean and algae-free as possible.

Commissioner Sorensen's Waterway Working Group: Commissioner Sorensen has formed this informal group that meets once a month to address long-term water quality issues throughout the City. The group includes several scientists from NSU, as well as City staff and well-known environmental volunteers. Recent discussions have been regarding planting of mangroves at George English and Coontie Hatchie Parks in order to study their growth and their viability as a pollution reducing method throughout the City. "Living Seawalls" are also a hot topic, as the City is going to install one at Riverwalk. Of course, LIWMD members attend these meetings.

Chief Waterway Officer: The City Manager recently appointed an excellent candidate to the new position of Chief Waterway Officer. And that person is our good friend, Marco Aguilera, formerly Senior



Officer for Code. Marco won over a field of seven qualified candidates, including several with significant scientific backgrounds. But no other candidate had Marco's wealth of knowledge of the City's waterways and his existing relationships with City, County & State officials. He will oversee EVERYTHING related to City waterways. We look forward to working with him on developing City processes to more effectively handle sunken boats, fuel spills, derelict boats and more.

Geoff Rames, Chairman



LAUDERDALE ISLES
WATER MANAGEMENT
DISTRICT
www.liwmd.org

The New Building Height Code

This table shows the new building height codes for the Annexed Areas, which includes Lauderdale Isles. Our zoning district is RS-6.85A, and the new height requirement is shown in red. You can see additional zoning information like this by going to : Fortlauderdale.gov -Select MUNICODE - Within Municode, search for chapter 47-39

Section 47-39.A.6. Dimensional Requirements

A. Table of Dimensional Requirements for RS-3.52, RS-6.70, **RS-6.85A**, RS-6.85B districts.

| Requirements | RS-3.52 | RS-6.70 | RS-6.85A | RS-6.85B |
|--------------------------------------|--------------------|-------------------|------------------|------------------|
| Maximum density per net acre | 3.52 | 6.70 | 6.85 | 6.85 |
| Minimum plot area per unit | 10,000 square feet | 7,500 square feet | 6000 square feet | 6000 square feet |
| Maximum Structure Height | 25 feet | 25 feet | 25 feet | 25 feet |
| Minimum plot width | Note A | Note A | Note A | Note A |
| Minimum floor area per dwelling unit | 800 square feet | 1,000 square feet | 800 square feet | 800 square feet |
| Minimum Front Yard | 25 feet | 25 feet | 25 feet | 25 feet |
| Minimum side yard | 7.5 feet | 7.5 feet | 7.5 feet | 7.5 feet |
| Minimum street side yard | 15 feet | 15 feet | 15 feet | 15 feet |
| Minimum rear yard | 15 feet | 15 feet | 15 feet | 15 feet |
| Maximum plot Coverage | 40% | 40% | 40% | 40% |

The Extreme Airport Noise on April 10th And How to Investigate Airport Noise



By Dick Cahoon

LICA Airport Noise Committee Chairman

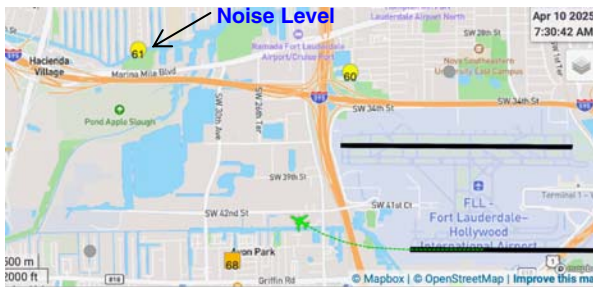
You may recall that on April 10, we were awakened by horrible aircraft noise as flights departed right over our neighborhood, just like they did in the days before Metroplex. Of course, that morning's incident blew up all over Nextdoor. In this article, we would like to share with you : how to simply look up departing flights from the airport and how to easily file a noise complaint at the same time.

You can use **WebTrak** to investigate a noise from a flight that occurred near you. Go to: <https://webtrak.emsbk.com> Choose **FLL** as the airport and use the **Start Here**, **Investigate**, and **Help** tabs. Size the map for your use. Then follow along, delayed 20 minutes from real time, or choose a previous time frame to investigate. Then,

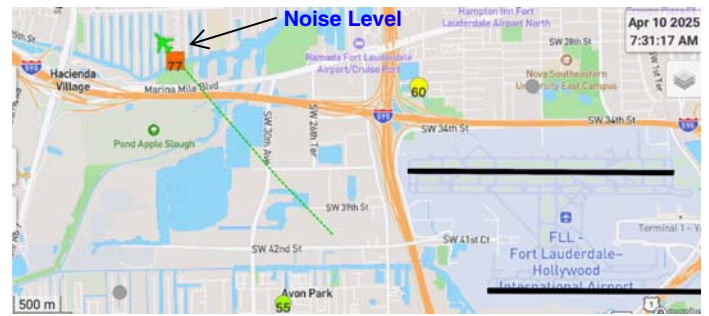
1. Locate your position on the map
2. Choose the time period
3. Select a flight to report a complaint
4. Submit a complaint

Click the **Where** tab to get started. If you don't wish to identify a flight, you can still register a complaint. Click on the **Show Complaint Form** button to begin.

April 10th: Here are screenshots from Webtak when we investigated one of the very noisy over-flights on April 10:



This screenshot shows a west departure from the South Runway at 7:30:42am, and the number in the yellow circle near Lauderdale Isles indicates a noise level of 61 decibels - "acceptable" noise level during initial departure



This next screenshot shows the continuation of that same departure that flies directly over Lauderdale Isles a few seconds later at 7:31:17 am, giving an extremely unacceptable noise level of 77 decibels.

After filing my noise complaint, here is the response I received from Winston Cannicle, BCAD's Environmental Officer at the airport:

This email is being sent to acknowledge receipt of your formal noise comment submitted on 4/10/2025 to the Broward County Aviation Department's (BCAD) noise comment system for your residence regarding "early morning" aircraft overflights from the Fort Lauderdale International Airport (FLL).

Based on the information from the local Federal Aviation Administration (FAA) Air Traffic Control Tower (ATCT), the FAA's flight operations division was conducting "special airspace operations" south of FLL on 4/10/2025, and this resulted in the departures from FLL being issued "non-standard" departures headings during that time so as to avoid the "FAA's airspace activities". Needless to say, this resulted in the aircraft overflights being observed over your area. Once the FAA concluded their activities, normal departures operations were resumed at FLL.

Unfortunately, due to weather conditions or technical situations like this on April 10, we occasionally will experience noise events like we did in the old days before Metroplex. Thankfully, 90% of departures are "RNAV to DREDS," and noise levels are acceptable most of the time.



New River Adventures

Dock and Dine Alternatives to the Downtowner

With the recent closing of the beloved Downtowner Restaurant, many small boaters have been wondering where to go next for a casual cruise and a great meal. Luckily, the New River still offers some fantastic waterfront options — all accessible by boat.

1. YOT Bar & Kitchen

Located at Lauderdale Marine Center, YOT (www.yotlmc.com) serves up fresh seafood and craft cocktails in a relaxed, stylish setting. Plenty of dockage makes it an easy and popular stop. Located at Lauderdale Marine Center (*website has coordinates for your chartplotter*)

2. Rendezvous Bar & Grill

A long-time local favorite, Rendezvous (www.therendezvousbarandgrill.com) offers a cozy, laid-back atmosphere with a wide variety of food and drinks. It's a great spot to unwind after a day on the water. Located at Marina Bay. (*Website has coordinates for your chartplotter*)

3. Marina Village (Featured Highlight)

The newest and most exciting addition is **Marina Village** (www.marinavillageftl.com), a 500-passenger ferry turned into a dynamic floating lounge and entertainment venue. Dockage is located at Bahia Mar Marina, right next to the Jungle Queen dock on

the beach. . When you arrive, simply scan the bar codes posted along the docks to pay for your slip. While the dockage rates may seem a little steep, the vibrant atmosphere, live entertainment, and top-notch drinks make it well worth the experience. Whether you're looking for a lively afternoon or an energetic night out, Marina Village is a must-visit destination for boaters exploring the New River. So don't let the closing of the Downtowner slow you down — cast off and discover these new favorites right from your own boat!

Earl Prizlee



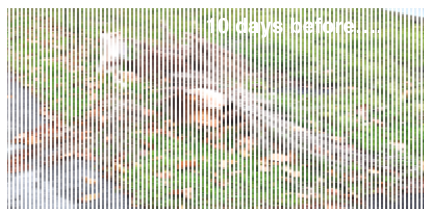
BULK TRASH PICKUP - Can't you just wait?

According to the City's Bulk Trash brochure: "place bulk trash at your curb by 7am on your pickup day, but no earlier than 24 hours in advance." So for Lauderdale Isles, that would mean no earlier than 7am on the Tuesday before the first Wednesday of the month. Seems like some people don't have a calendar. So we'll provide a friendly reminder.

LICIA received an email recently from a neighbor who was cited by Code for putting their bulk trash out too soon, "it's common practice for many neighbors to set out bulk items 72-48 hours early the weekend before." So does that make it OK? Ask your neighbors how they feel about looking at that pile on their block for days before pickup.



Sunday before....



10 days before....

There's a solution if you can't wait for pickup day. You can make an appointment with the City for a special pickup by calling Customer Service at 954-828-8000. They have a very reasonable charge

for this service - and it's a lot less costly than paying the City when they pick it up after you've been cited.

Household Hazardous Waste Event:

Saturday, May 24th, 9:00 - 2:00 at Mills Pond Park.

You must pre-register at fortlauderdale.gov

For more info, call 24 hour Customer Service at 954-828-8000



Post-Secondary Education Advising, LLC



With over 24 years of experience as an educator in Broward County, I am dedicated to empowering families with personalized college advising and academic coaching tailored for high school students from all learning environments. Your journey to success begins here!

- Customized Academic Coaching for Every Learner
- Expert College Application Navigation
- Guidance to Maximize Extracurricular Impact
- Masterful Essay Crafting & Writing Support
- Professional Development of Academic Resumes
- Strategic Scholarship Assistance

Let's Build Your Future
together!

 (954) 551-0156

 www.orrisspsea.com

 mrs.orrisspsea@gmail.com

 [mrs_orris](#)

**YOUR TRUSTED PARTNER IN
POST-SECONDARY EDUCATION SUCCESS!**

Florida Design & Associates

Custom Window Treatments



- Commercial & Residential • Motorized Blinds
- Plantation Shutters
- Wood Blinds
- Pleated Shades
- Cornices



**"Florida Natives and
Lauderdale Isles Residents"**

25 Years
Family Owned & Operated
License & Insured

Serving South Beach...to Palm Beach

954-274-7873
www.FloridaDesignServices.com



LAUDERDALE ISLES
WATER MANAGEMENT
DISTRICT
www.liwmd.org

Lawn fertilizers are a major contributor to algae blooms. Let's keep our waterways free from algae this summer.

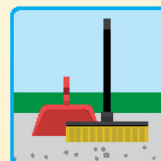
Did you know the City of Fort Lauderdale prohibits fertilizing in the summer?

No applicator shall apply fertilizers containing nitrogen and/ or phosphorus to turf and/or landscape plants during the prohibited application period (June 1st – September 30th)

Additional information about the City's Fertilizer Ordinance



Fertilizers applied to turf and/or landscape plants shall be formulated and applied in accordance with requirements and directions as provided on the fertilizer bag.



Any fertilizer applied, spilled, or deposited, either intentionally or accidentally, on any impervious surface shall be immediately and completely removed to the greatest extent practicable.



Fertilizer shall not be applied within ten (10) feet of any pond, stream, watercourse, lake, canal, or wetland. Caution shall be used to prevent direct deposition of nutrients into the water.



In no case shall fertilizer be washed, swept, or blown off impervious surfaces into stormwater drains, ditches, conveyances, or water bodies.



Spreader deflector shields are required when fertilizing via rotary (broadcast) spreaders. Deflectors must be positioned so that fertilizer granules are deflected away from all impervious surfaces, fertilizer-free zones, and water bodies, including wetlands.



Any person who violates any provision of this ordinance shall be guilty of a noncriminal infraction. The fine structure is defined in Sec. 11-25-civil penalties.

For more information, please visit www.fortlauderdale.gov.



If you would like this publication in an alternate format, please call 954-828-4755 or email strategiccommunications@fortlauderdale.gov.

SERVICES WE OFFER:

- Tree Trimming Services
- Landscape Upgrades
- Sod Installations
- Hardscapes
- Fertilizing Services
- Clean Ups
- Water Falls

Family owned and operated
We are your neighbors

MORE SERVICES!

- Sprinkler Repairs
- Mulching Services
- Gravel Designs
- Playgrounds & Dog Parks
- Pressure Wash Services
- Gutter Cleanup
- Drainage Systems

CONTACT US



Office: (954) 646-0162

Cell: (954) 646-0218

Website:

citywidelawnservice.com

Email:

Citywidelawnservice@gmail.com

Address: 1050 NE 43rd St,
Oakland Park, Florida 33334



ABOUT US

Citywide Lawn Service, LLC. has been providing complete landscaping, hardscaping, and irrigation services to the residents of Broward County and all surrounding areas for over 25 years.



THE REFRIGERATOR LIST

Updated May 2025

LICIA BOARD OF DIRECTORS 2022-2023

Executive Board

President: Earl Prizlee 954-579-8465
Vice-President: Geoff Rames 954-327-9095
Secretary: Karen Rames 954-327-9095
Treasurer: Andrew Silverman 954-608-9195

Board of Directors

Andros: Trent Simpson 314-495-8722
Bimini: Aynsley Geramanis 954-604-0014
Cat Cay: Dick Cahoon 954-997-2591
Duck Key: Rick Cunningham 954-579-0214
Flamingo: Penny Shea 754-581-6572
Gulfstream: Geoff Rames 954-327-9095
Key Largo: Jackie Zumwalt 954-330-5621
Marathon: Julie Gordon 954-445-3345
Nassau: Joann Kratky 954-683-1320
Okeechobee: Andrew Silverman 954-608-9195
Sugarloaf: Glo Knowles(interim) 954-993-1239
Tortugas: Eric Silva 954-770-0644
Whale Harbor: Dawn Hanna 954-873-1925

Newsletter Editor: Geoff Rames: grames.licia@gmail.com

Webmaster: Dawn Hanna: mmex99@yahoo.com

LICIA EMAIL: laudisles@gmail.com

HELPFUL PHONE NUMBERS

Fort Lauderdale Police Non-Emergency 954-764-HELP
Fort Lauderdale Customer Svc. (24 hrs) 954-828-8000
including Water/Sewer/Trash/Canal Cleaning
Airport Noise Complaints 954-359-2366
City Hall 954-828-5004
Building Department 954-828-5191
Code Enforcement 954-828-5207
Commissioner Ben Sorensen 954-802-3311
Animal Control (Broward County) 954-359-1313
Comcast *Good luck!* 800-266-2278
Nuisance Alligators: FWC 866-392-4286
Chief Waterway Officer 954-828-5787
Mosquito Control (Broward County) 954-765-4062
FPL Power Outages 800-4OUTAGE

Vacation Rental Complaints

1-800-685-7453

(This is a new number, available 24/7)

PICKUP SCHEDULE for LAUDERDALE ISLES

Weekly Trash Pickup (black cart): Tuesday & Friday
Weekly Recycling Pickup (blue cart): Tuesday
Weekly Yard Waste Pickup (green cart): Friday
Monthly Bulk Trash Pickup: First Wednesday

WATERWAY ISSUES - Who to call:

- **Alligators (& Crocodiles) Problems**
FWC Nuisance Alligators: 1-866-FWC-GATOR
- **Pollution/ Oil Spills within the City of Fort Lauderdale:**
7:30 –5:00 Ft. Laud. Customer Service:954-828-8000
Evenings/Weekends: FLPD 954-764-HELP
- **Pollution Complaints outside the City of Ft. Lauderdale:**
County Environmental 24 hrs: 954-519-1499
- **Large Debris/Dead Animals in the water:**
Ft. Laud. Customer Service 954-828-8000
- **Injured Manatees**
FWC: 1-888-404-FWCC
- **Sinking or Sunk Boats**
24 Hour Customer Service 954-828-8000
- **Unightly/Derelict Boats/ Boats too wide for canal:**
Ft. Laud. Code Enforcement: 954-828-5207
- **Lawn Service Firms disposing debris in canal:**
FLPD 954-764-HELP
- **Illegal Dock Construction/Pilings/Dredging**
Code Enforcement: 954-828-5207
- **General Waterway Issues**
Chief Waterway Officer, Marco Aguilera 954-828-5787

Lauderdale Isles Closed Sales

Jan. 1, 2025 to Apr. 30, 2025

Presented By: Julie Gordon of
THE GORDON GROUP Realtors

| Address | B/B | Sq. Ft. | Sale Price |
|-----------------------|-------|---------|-------------|
| 2542 Nassau Ln. | 4/2 | 2,331 | \$1,325,000 |
| 2448 Sugarloaf Ln. | 3/2 | 1,892 | \$1,140,000 |
| 2518 Whale Harbor Ln. | 3/2 | 1,572 | \$1,125,000 |
| 2636 Nassau Ln. | 3/2.5 | 1,992 | \$ 920,000 |
| 2430 Bimini Ln. | 3/2 | 1,382 | \$ 790,000 |
| 2678 Marathon Ln. | 2/2 | 1,427 | \$ 760,000 |
| 2497 Bimini Ln. | 3/2 | 1,831 | \$ 752,000 |
| 2512 Sugarloaf Ln. | 2/1 | 936 | \$ 665,000 |

PUT THE DATE ON YOUR CALENDAR:

LICIA GENERAL MEETING
VIRTUAL MEETING MAY 15, 7:00PM
Zoom info at: ourlicia.com

STITCH NICHE

Sewing, Fixing, Repair, Mending Services, Crafting
Creation, Repurposing



Joann K. - Text (954) 683-1320 or
Email: dulce_vida@comcast.net

MEMBER DUES for Jan. 2025 – Dec. 2025: BE A MEMBER IN GOOD STANDING

Dues are only \$20 per year. Mail to: LICIA, PO Box 121255, Fort Lauderdale, FL 33312

Please return this portion with your check

Name: _____

Address: _____

Email: _____