

New Beginnings Home Series





About us

The Titan Homes facility in Weiser, Idaho offers one of the most diverse product offerings of any manufacturer on the West Coast - from park model homes to residential homes (HUD and Modular) to commercial buildings. We have a home for everyone, no matter what stage of life you're in. We go to great lengths to provide our customers with innovative designs and a vast selection of home décors, as well as the ability to customize plans to fit the needs and demands of any lifestyle.

Confidence and Trust

Our original manufacturing facility in Weiser, ID opened in 1968. Throughout the past 46 years, we have built thousands of homes for families throughout the West. We currently operate two manufacturing centers with one facility being dedicated strictly to specialty products such as multi-family units, commercial buildings, man camp housing and multi-level buildings such as hotels and apartments.

Experienced Workforce

We have a very skilled and established workforce and management team with years of experience. Our dedication to quality and customer satisfaction has allowed us to attract and maintain loyal customers.

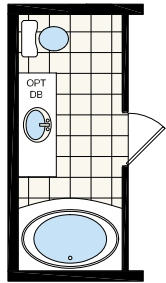
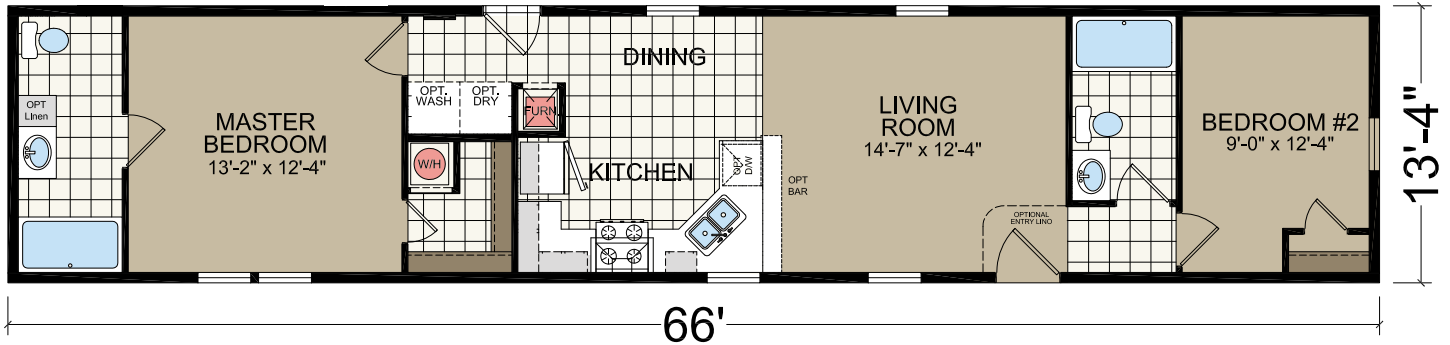
Quality You Expect

Every home we build is professionally designed and engineered. Built by craftsmen in a controlled factory environment, we continually inspect our work at every phase of the home construction process to ensure our rigorous quality standards are met. We believe that to build the best, you have to use the best. We use some of the most trusted brand names in home construction such as Whirlpool®, Congoleum®, Owens Corning® and Georgia-Pacific. These building material suppliers along with many others share our dedication to quality components and home construction.

All of our homes receive a one year warranty on all structural, electrical, heating and plumbing components. Our straightforward warranty plan is hassle-free with no deductibles or service charges to the homeowner. We are committed to our customers and the home-buying experience.

MODEL 1662B

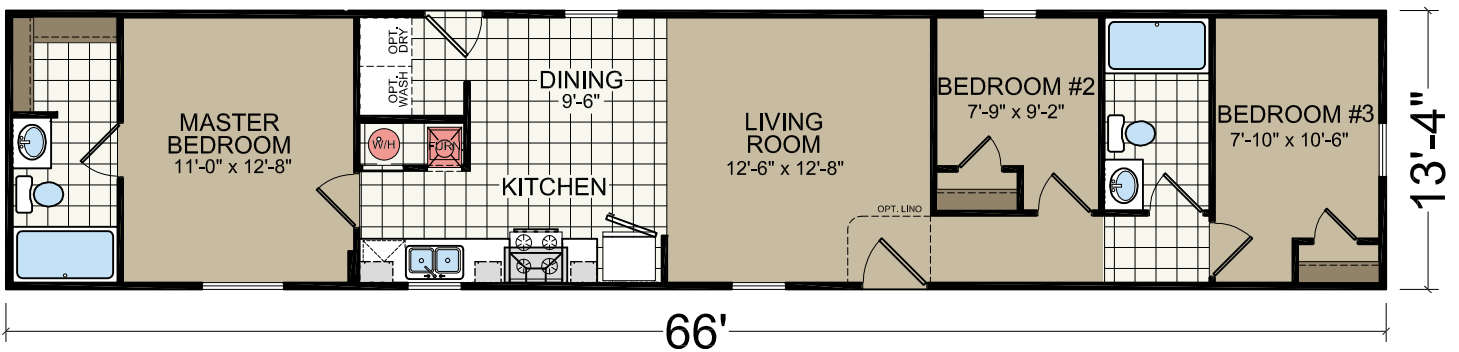
880 sq.ft.
2 Bed-2 Bath
13'-4" x 66'



OPT. BATH

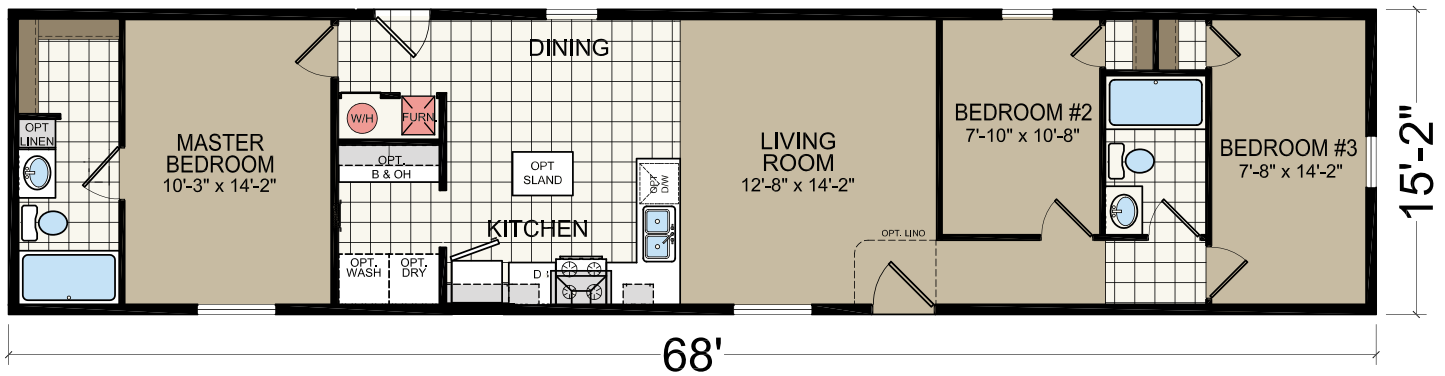
MODEL 1663B

880 sq.ft.
3 Bed-2 Bath
13'-4" x 66'



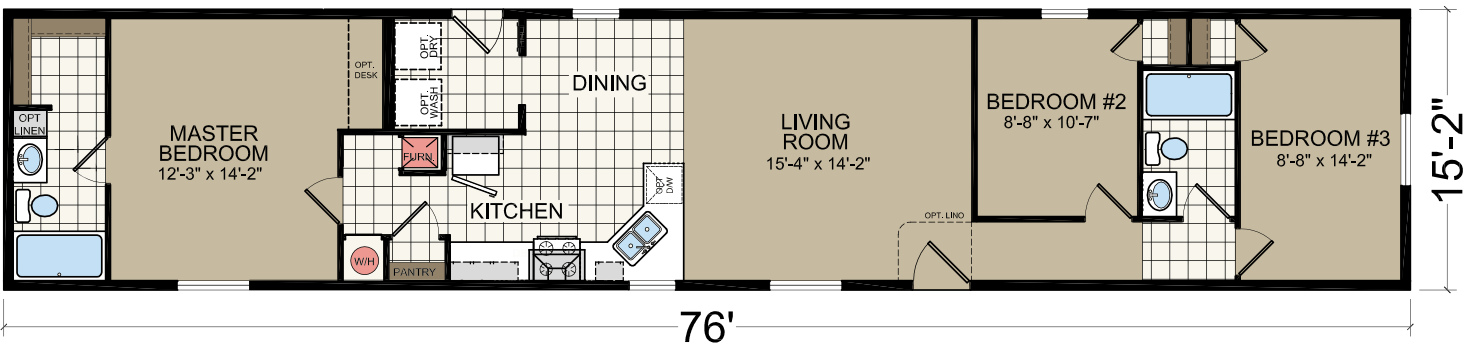
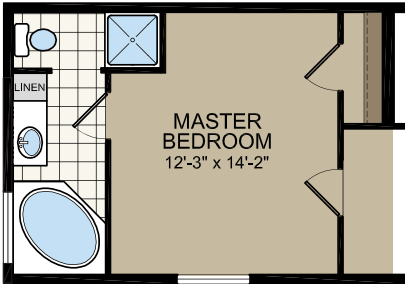
MODEL 2683B

1031 sq.ft.
3 Bed-2 Bath
15'-2" x 68'



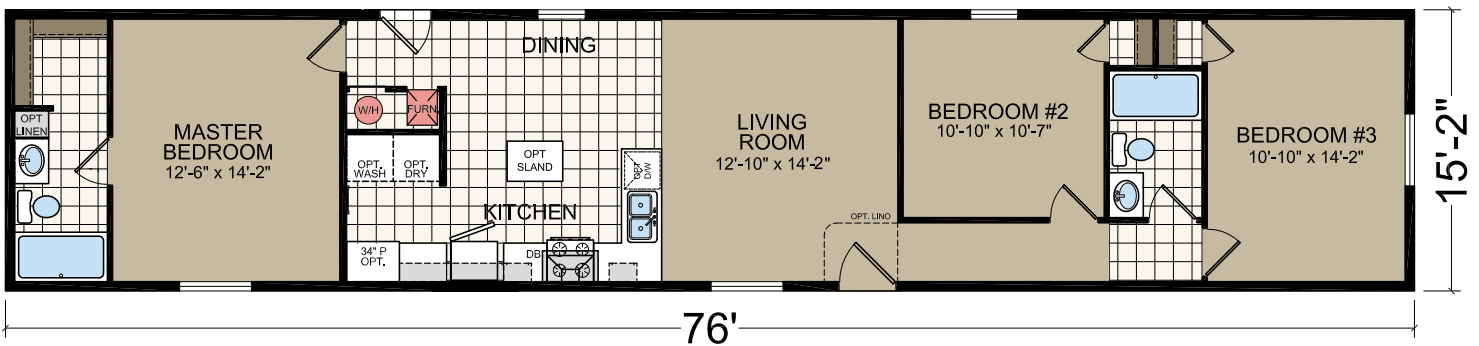
MODEL 2763B

1153 sq.ft.
3 Bed-2 Bath
15'-2" x 76'



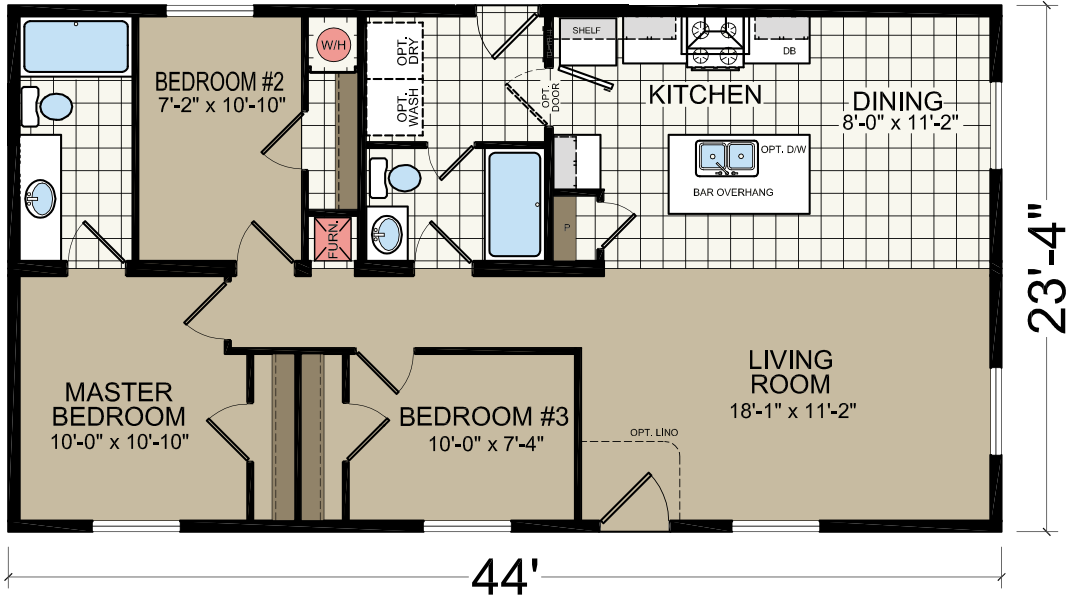
MODEL 2763C

1153 sq.ft.
3 Bed-2 Bath
15'-2" x 76'



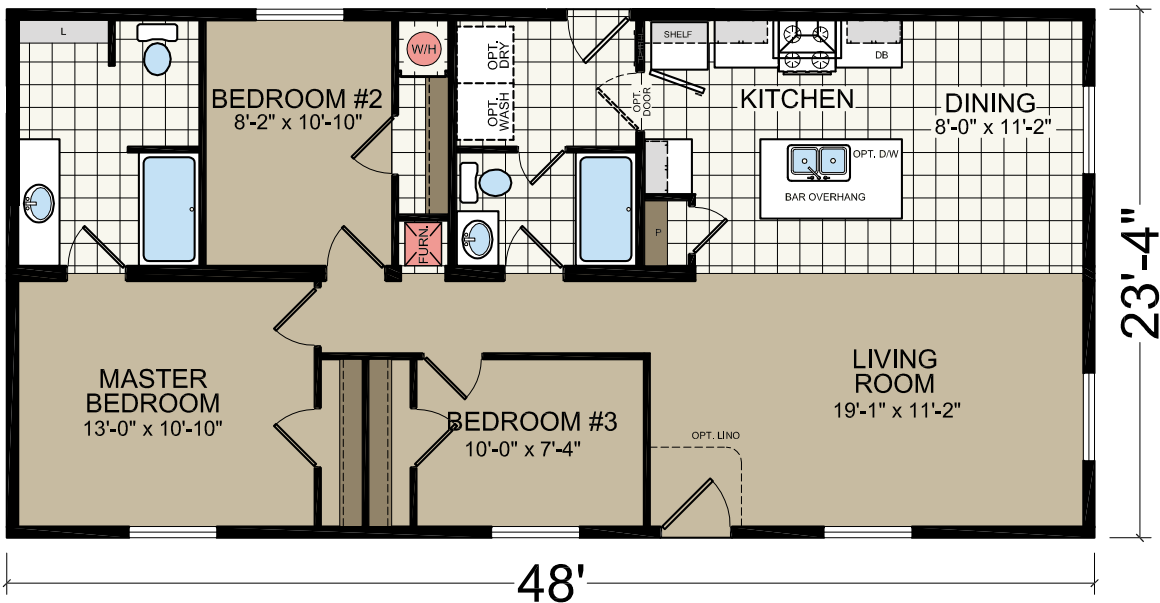
MODEL 5443D

1027 sq.ft.
3 Bed-2 Bath
23'-4" x 44'



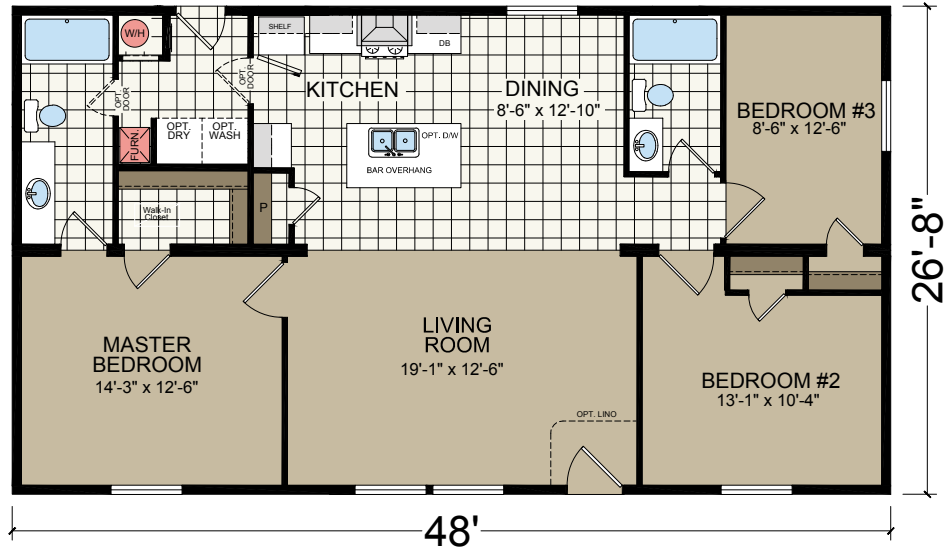
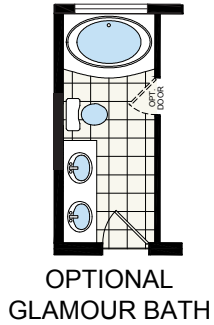
MODEL 5483D

1120 sq.ft.
3 Bed-2 Bath
23'-4" x 48'



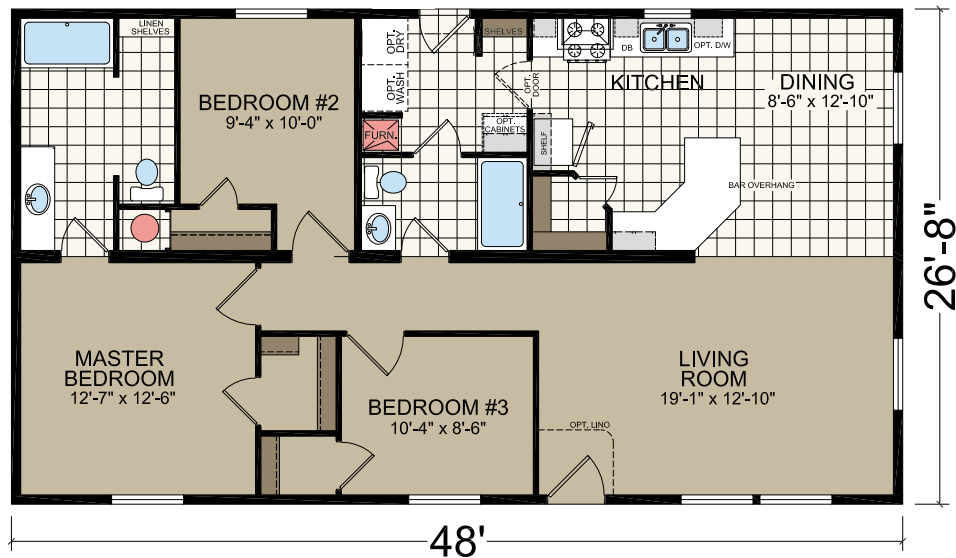
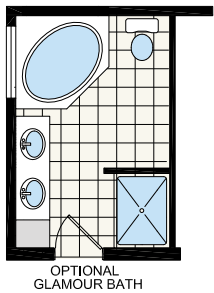
MODEL 4483B

1280 sq.ft.
3 Bed-2 Bath
26'-8" x 48'



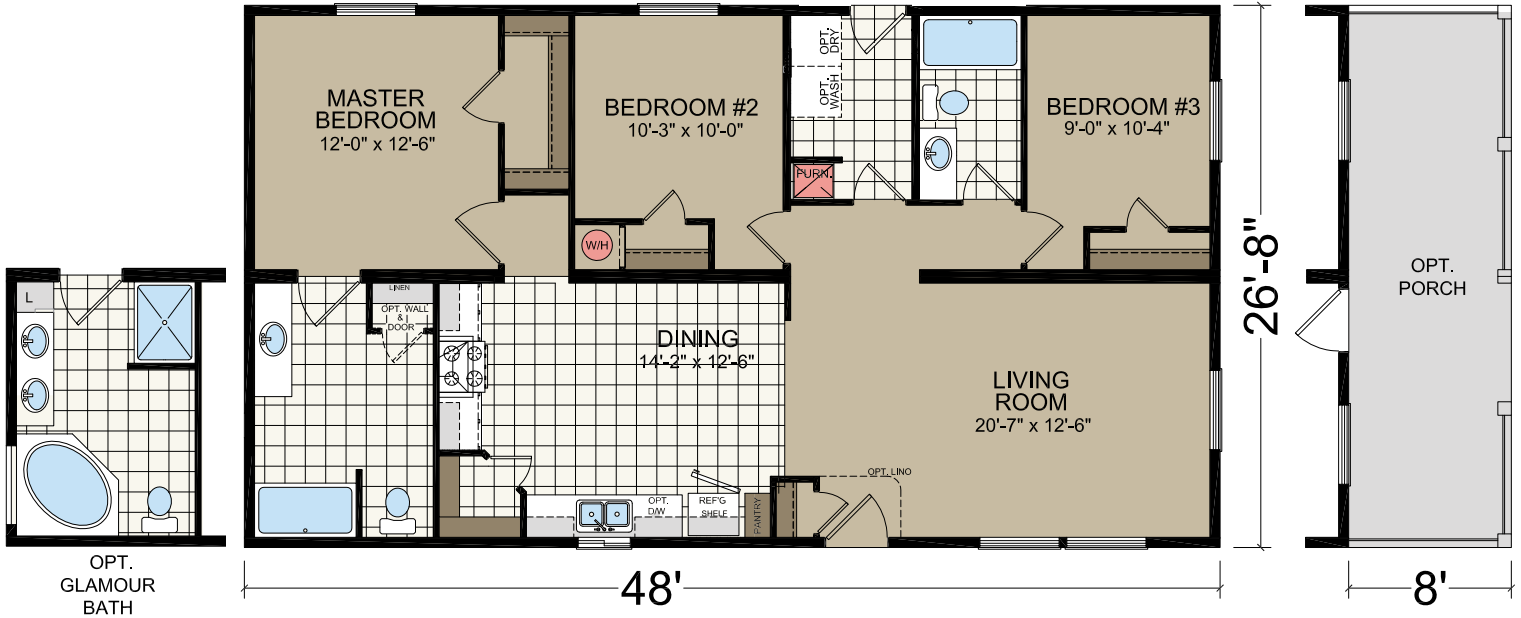
MODEL 4483C

1280 sq.ft.
3 Bed-2 Bath
26'-8" x 48'



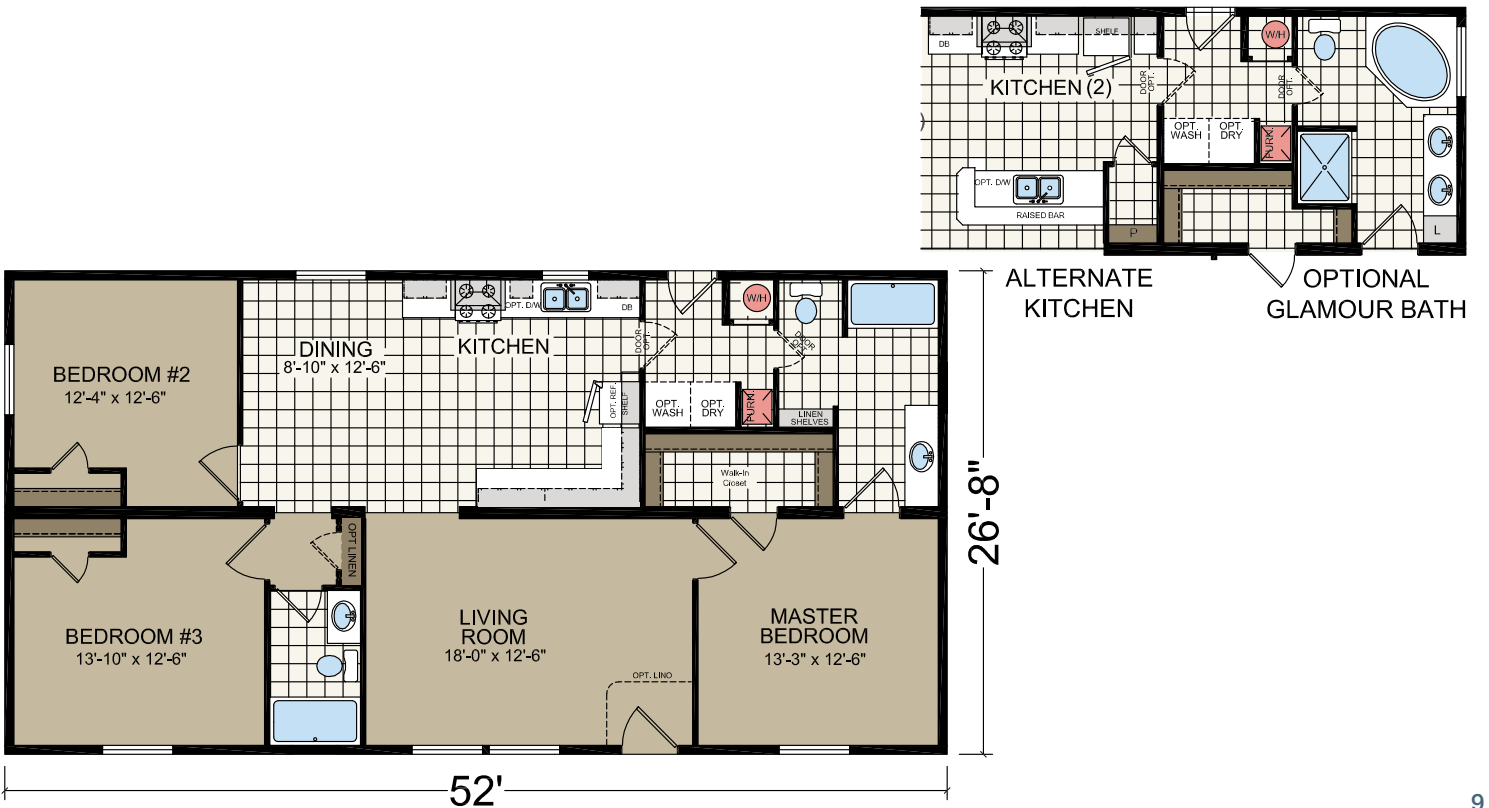
MODEL 4483D

1280 sq.ft.
3 Bed-2 Bath
26'-8" x 48'



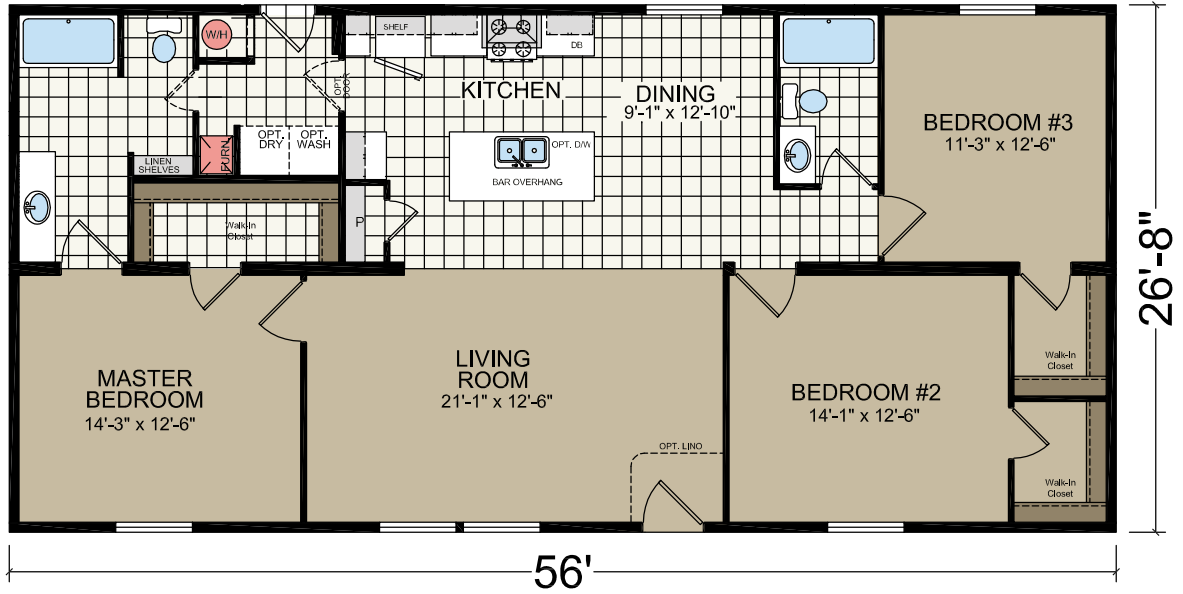
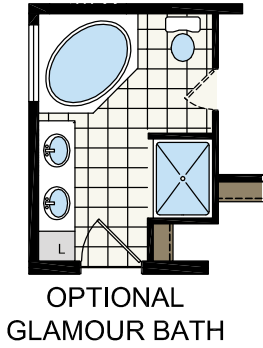
MODEL 4523B

1387 sq.ft.
3 Bed-2 Bath
26'-8" x 52'



MODEL 4563B

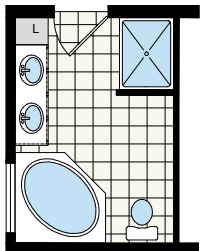
1493 sq.ft.
3 Bed-2 Bath
26'-8" x 56'



MODEL 4603L

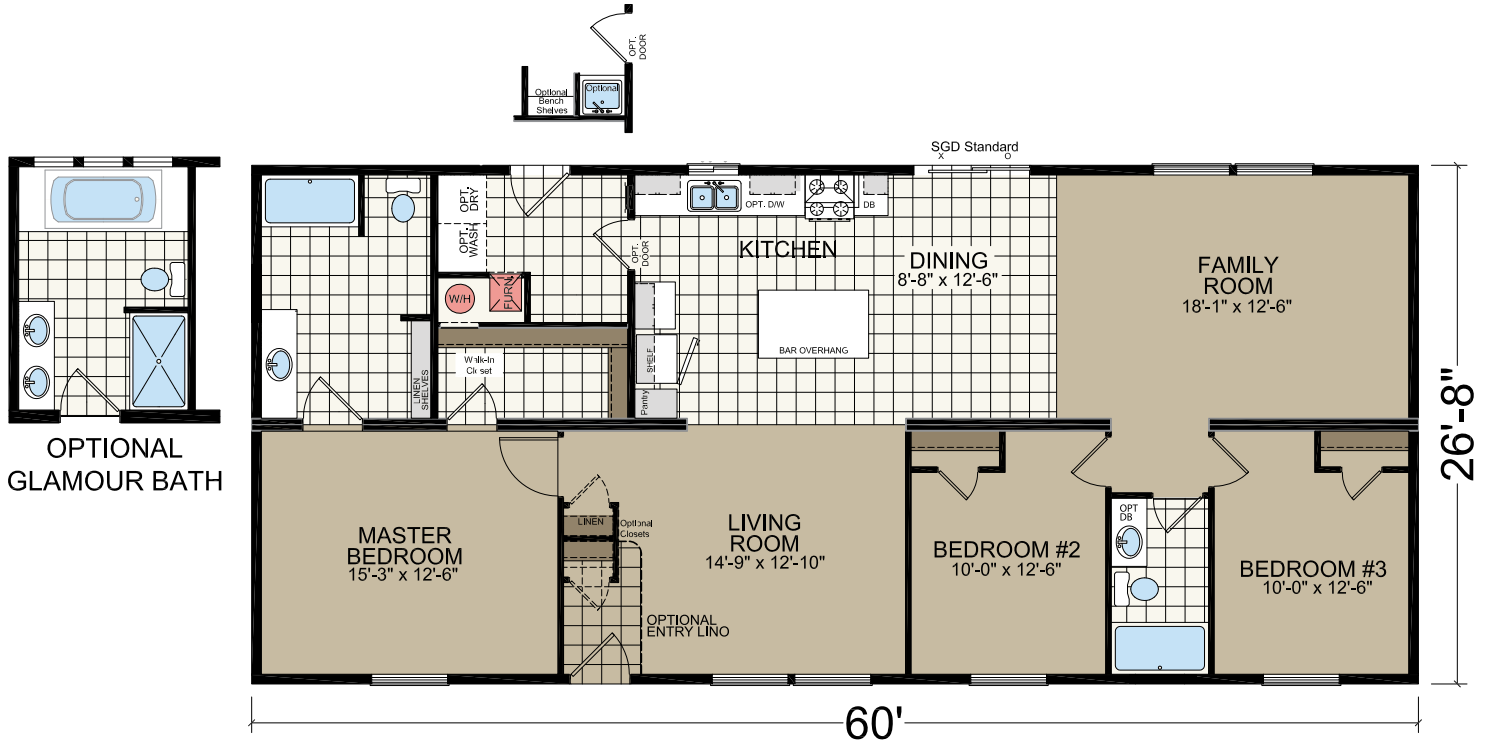
1600 sq.ft.
3 Bed-2 Bath
26'-8" x 60'

OPTIONAL GLAMOUR BATH



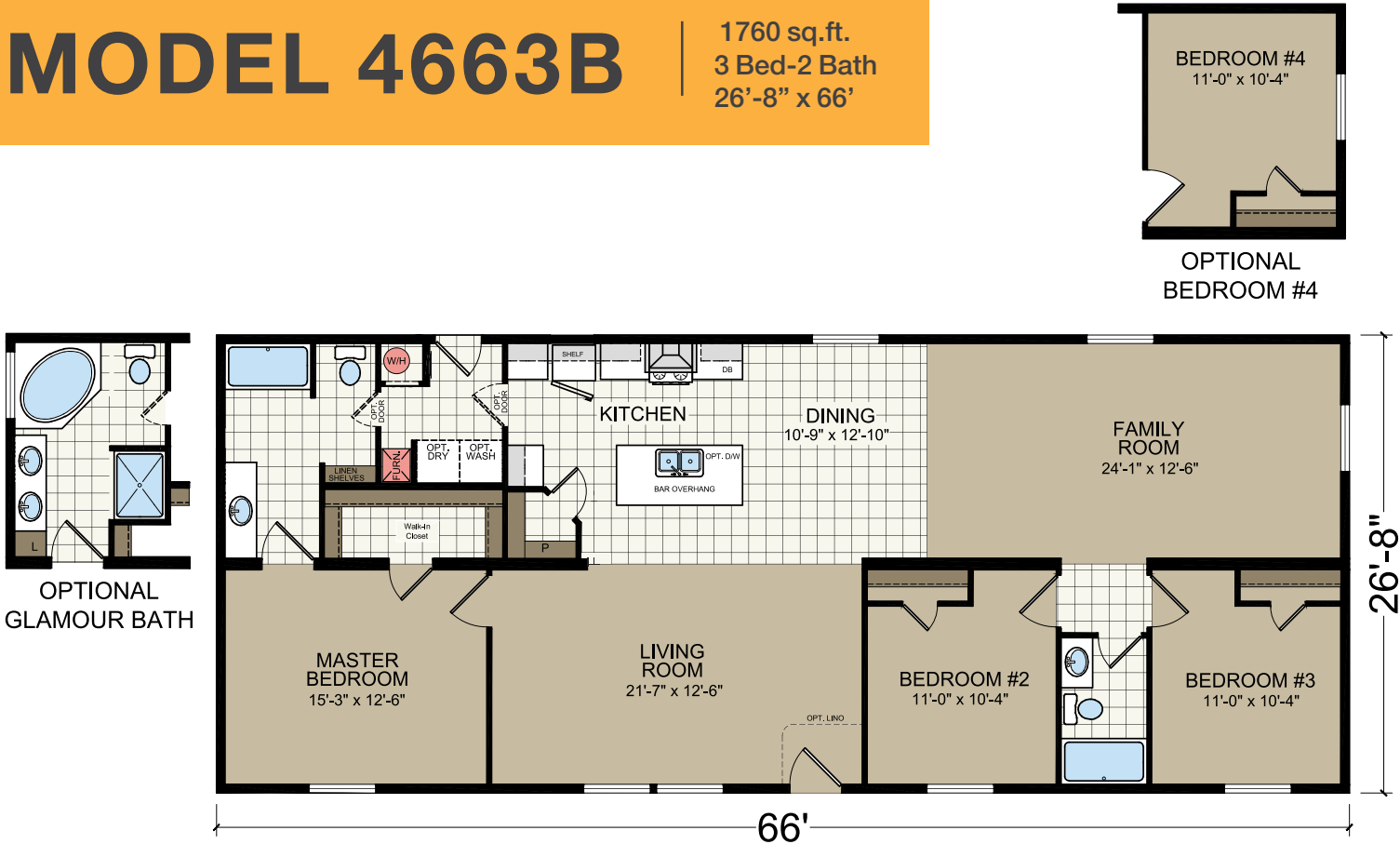
MODEL 4603F

1600 sq.ft.
3 Bed-2 Bath
26'-8" x 60'



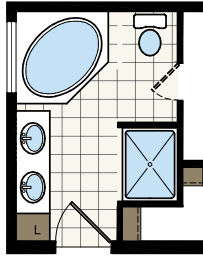
MODEL 4663B

1760 sq.ft.
3 Bed-2 Bath
26'-8" x 66'

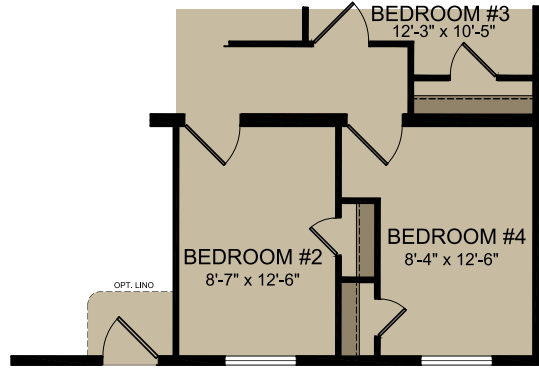


MODEL 4603B

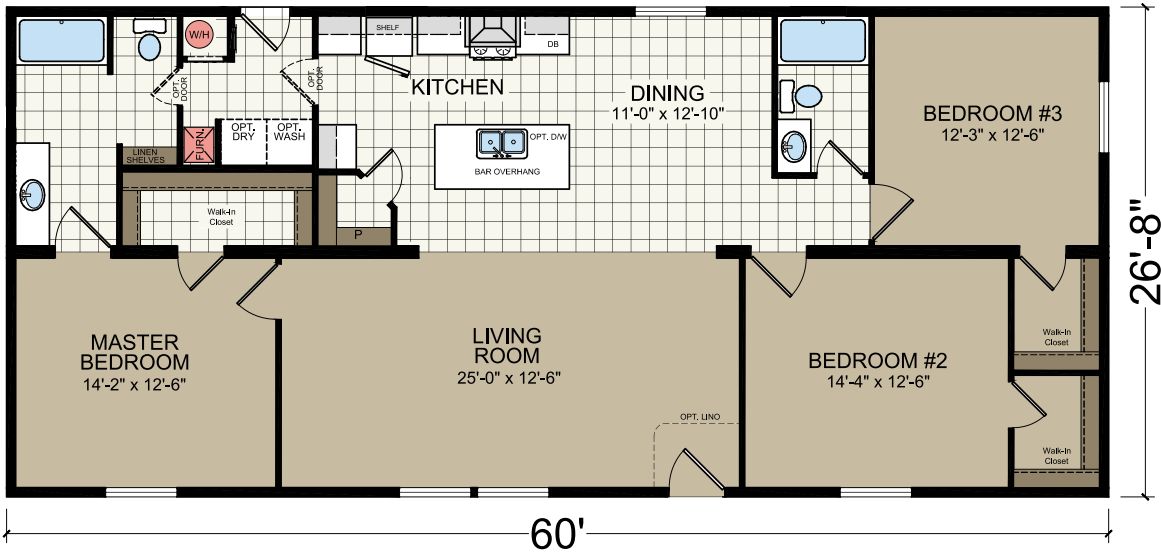
1600 sq.ft.
3 Bed-2 Bath
26'-8" x 60'



OPTIONAL
GLAMOUR BATH



OPTIONAL BEDROOM #4



MODEL 4603B



Standard Features

CONSTRUCTION

- Full Length Frame
- Detachable Hitch
- Concealed Ridgebeam
- 20# Roof Load
- 3:12 Roof Pitch (nominal)
- New Beginnings Standard Dormer (multi-section only)
- 3-Tab Shingles
- Fiber Cement Vertical Siding
- Front - 6" Eaves (nominal)
- Rear - 6" Eaves (nominal)
- 6" Eave Fascia (nominal)
- 6" Leading & 6" Tailing Eaves
- Full End Wall Close-up
- 19/32" T&G OSB Decking
- 2 X 6 Floor Joists 16" OC
- 2 X 4 Exterior Walls 16" OC
- 8.5' Sidewall Height w/Flat Ceiling
- R-28 Ceiling Insulation
- R-22 Floor Insulation
- R-11 Wall Insulation
- Vinyl Low-E Insulated Windows
- Exterior Window Trim
- Front Door - 36" w/Peephole
- Rear Door - 32" w/Peephole
- Porch Light - Front & Rear

INTERIOR

- Skip Troweled Ceiling Finish
- Flat Interior Paint
- Wire Ventilated Closet Shelving
- 2-Panel White Interior Doors
- Residential Door & Window Molding
- Tape and Textured Walls Throughout

FLOORING

- "Live Wire" Carpet
- 3/8" 5# Rebond Pad
- Linoleum

HEATING & ELECTRIC

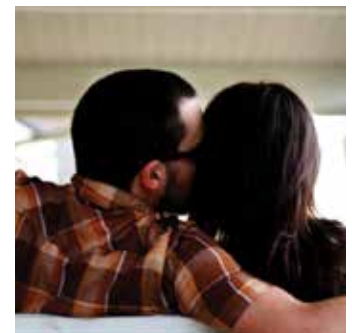
- Furnace - Standard Electric
- Prep for Washer/Dryer-Electric
- 30-Gallon Electric Water Heater
- 200 AMP Panel Box
- Exterior GFI Receptacle
- Toggle Light Switches
- Satin Nickel Ceiling Lights

KITCHEN

- 18 Cu Ft Refrigerator
- Deluxe Electric Range
- Range Hood w/Accent Bonnet & Switch
- Raised Panel Cabinets
- Adjustable Overhead Shelves
- Bank of Drawers
- Laminate Countertop & Edging
- Oversized Laminate Backsplash
- Laminate Backsplash Behind Range
- Stainless Steel Kitchen Sink
- Single-Lever Faucet w/Sprayer
- 30" Stacked Door w/Cubby Overhead Cabinets

BATHROOM

- Raised Panel Cabinets
- Vanity Mirror w/Flat Stile Frame
- Tub/Shower Combo – Master & Hall Bath
- Satin Nickel Towel & Tissue Holders
- 36" Lavy Height - Master Bath







Titan Homes
PO Box 190
1425 Sunnyside Rd
Weiser, ID 83672

TitanhomesID.com

