

STITCHIN' for KIDS

FROM OUR HEARTS & HANDS TO YOURS

Infant Krinkles



Infants need stimulants for play too. These little Krinkle squares have ribbon taggies which provide interest. They are filled with washable and dryable crinkle cellophane.

Krinkles are approximately 6 inches square as requested by hospital staff.

These instructions are written for volunteers of the Stitchin' for Kids project to make the squares as gifts for infants in hospitals.

Please respect intellectual property; do not post this pattern on your website, blog or other electronic media without the express written permission of the designer (when identified) or Stitchin' for Kids.

Considerations:

Each square is filled with a piece of cellophane that has been pre-crinkled to make an interesting sound when handled. The crinkle material may be washed and put into a dryer on medium heat, but it cannot be ironed.

Flannel should be cut into squares of at least 6" (nothing smaller because of the possibility of choking), and there should be two or three loops of ribbon on each side.

Requirements:

Fabric – Small amounts of colorful flannel.

Ribbon – Small amounts of multiple colors, textures and widths of ribbon (minimum 3/8" wide).

Rick rack, twill tape and other trims may also be used, but not sheer organdy ribbon.

Crinkle Cellophane – One source is American Felt and Craft. Another source is liners from cereal boxes which are sturdy and louder than the commercial crinkle material. If using liners from cereal boxes, wash them in hot, soapy water, and dry thoroughly.

Scissors, Pins, Rotary Cutter, Cutting Mat and Thread coordinated and/or contrasting colors

Assumptions:

All seams are 1/4 inch.

Preparation:

- Cut two pieces of flannel into 6 or 6 ½" squares using rotary cutter.
- Cut multiple pieces of ribbon for taggies.
 - Length of taggie pieces should be approximately 2 inches.
- Cut one piece of crinkle material into the same size as the flannel.

Construction:

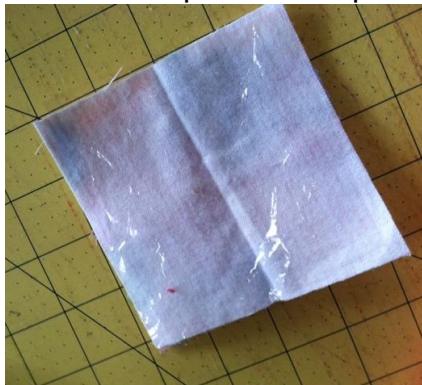
1. Adding the Taggies

- Fold ribbons in half. Align raw edges of ribbon with raw edge of flannel so that the ribbon fold is towards center of the square (see below).
- Stitch the raw edges of ribbon to the flannel edge.



2. **Assembling the square**

- Place the second piece of flannel on top of ribboned piece, right sides together.
- Place the cellophane on top of the second flannel piece (see below). *



- Stitch around three sides of the Krinkle.
- Clip corners.
- Turn the Krinkle square right side out.
- Turn the raw edges in $\frac{1}{4}$ " and pin closed. Topstitch around all four edges of the square, about $\frac{1}{8}$ " from the finished outside edges.
- Sew diagonally from corner to corner both ways so that there is an X across the Krinkle square (see photo on cover page) – this is done to prevent the Krinkle material from shifting.

* If you are using lightweight cellophane, such as the cellophane sold on rolls for wrapping gift baskets, you will want to cut the cellophane squares a bit larger than your finished flannel squares, and stuff the cellophane into the Krinkle after the two flannel squares have been sewn together on three sides, clipped, turned, and pressed (you can iron Krinkles made with this material). The extra width of the cellophane square will create more “crinkle.”

3. **Making the Krinkle Hospital-Ready**

- Machine wash and dry Krinkles in the dryer.
- If you used liners from cereal or cracker boxes, either wash the Krinkle squares twice, or add a second rinse to your wash machine cycle.
- When totally dry, store your finished Krinkles in a plastic zip bag. Individual bags are not necessary; it's OK to store multiple Krinkles in a quart or gallon zip bag.