

Rabbit Anti-Spectrin beta III (SPTBN2) (Erythrocyte Marker) [SPTBN2/2979R]: RM0227, RM0227RTU7

Intended Use: For Research Use Only

Description: Spectrin is an actin binding protein that is a major component of the plasma membrane skeleton. Spectrins function as membrane organizers and stabilizers by forming dimers, tetramers and higher polymers. Vertebrate spectrins have two alpha-subunits (alpha-I/alpha-II) four beta-subunits (beta-I-beta-IV) and a beta-H subunit creating diversity and specialization of function. Spectrin III is highly expressed in brain, kidney, pancreas and liver, and at lower levels in lung and placenta. Spectrin beta 3 is primarily expressed in nervous tissues with highest expression levels in the cerebellum, where it is found in Purkinje cell soma and dendrites.

Specifications

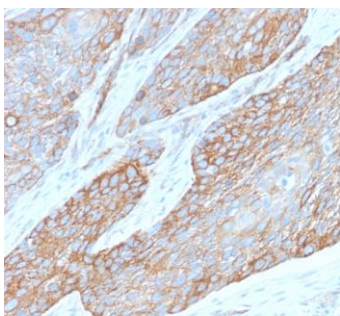
Clone:	SPTBN2/2979R
Source:	Rabbit
Isotype:	IgG
Reactivity:	Human, mouse, rat
Immunogen:	Recombinant fragment of human SPTBN2 protein aa 356-475
Localization:	Membrane
Formulation:	Antibody in PBS pH7.4, containing BSA and $\leq 0.09\%$ sodium azide (NaN ₃)
Storage:	Store at 2°- 8°C
Applications:	IHC, WB
Package:	

Description	Catalog No.	Size
Spectrin beta III (SPTBN2) Concentrated	RM0227	1 ml
Spectrin beta III (SPTBN2) Prediluted	RM0227RTU7	7 ml

IHC Procedure

Positive Control Tissue:	Pancreas or liver, HeLa cells
Concentrated Dilution:	50-200
Pretreatment:	Tris EDTA pH9.0, 15 minutes using Pressure Cooker, or 30-60 minutes using water bath at 95°-99°C
Incubation Time and Temp:	30-60 minutes @ RT
Detection:	Refer to the detection system manual

* Result should be confirmed by an established diagnostic procedure.



FFPE human pancreas stained with anti-Spectrin beta III using DAB

References:

1. β -III-spectrin immunohistochemistry as a potential diagnostic tool with high sensitivity for malignant peripheral nerve sheath tumors. Hirbe AC et al. Neuro Oncol. 2018.
2. Novel variants in SPTAN1 without epilepsy: An expansion of the phenotype. Gartner V et al. Am J Med Genet A. 2018.
3. Reactive protoplasmic and fibrous astrocytes contain high levels of calpain-cleaved alpha 2 spectrin. Kim JH, et al. Exp Mol Pathol. 2016.

Doc. 100-RM0227

Rev. A

Orders: customercare@medaysis.com Support: techsupport@medaysis.com Tel: 510-509-3153 www.medaysis.com

© Medaysis Company