

Rabbit Anti-CD90 [EP56]: RM0055

Intended Use: For Research Use Only

Description: Thy-1 or CD90 (Cluster of Differentiation 90) is a 25 - 37 kDa heavily N-glycosylated, glycoposphatidylinositol (GPI) anchored conserved cell surface protein with a single V-like immunoglobulin domain originally discovered as a thymocyte antigen. CD90 is expressed on thymocytes, neurons, glial cells, endothelial cells, fibroblasts, fetal liver cells and haematopoietic stem cells in normal bone marrow and cord blood. Thy-1 has been used as a marker for a variety of stem cells and for the axonal processes of mature neurons. CD90 is associated with unfavorable clinical and biological features in acute myeloid leukemia. In prostate cancer, CD90 has been reported to be overexpressed in cancer associated fibroblasts and serve as a marker for prostate cancer-associated stroma.

Specifications:

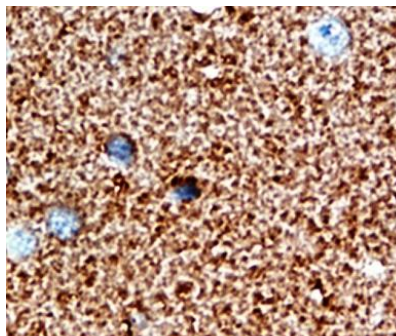
Clone: EP56
 Source: Rabbit
 Isotype: IgG
 Reactivity: Human
 Localization: Membrane, cytoplasm
 Formulation: Antibody in PBS pH7.4, containing BSA, glycerol, and ≤0.09% sodium azide (NaN₃).
 Storage: Store at 2°- 8°C. For longer periods of storage, store at -20°C. Avoid repeat freeze-thaw cycles
 Applications: IHC
 Package:

Description	Catalog No.	Size
CD90 Concentrated	RM0055	1 ml

IHC Procedure*:

Positive Control Tissue: Thymus
 Concentrated Dilution: 50-200
 Pretreatment: Citrate pH6.0, 15 minutes using Pressure Cooker, or 30-60 minutes using water bath at 95°-99°C
 Incubation Time and Temp: 30-60 minutes @ RT
 Detection: Refer to the detection system manual

* Result should be confirmed by an established diagnostic procedure.



FFPE human brain stained with anti-CD90 using DAB