

One Big Beautiful Bill and Work

Angela Rachidi, Senior Fellow and Rowe Scholar



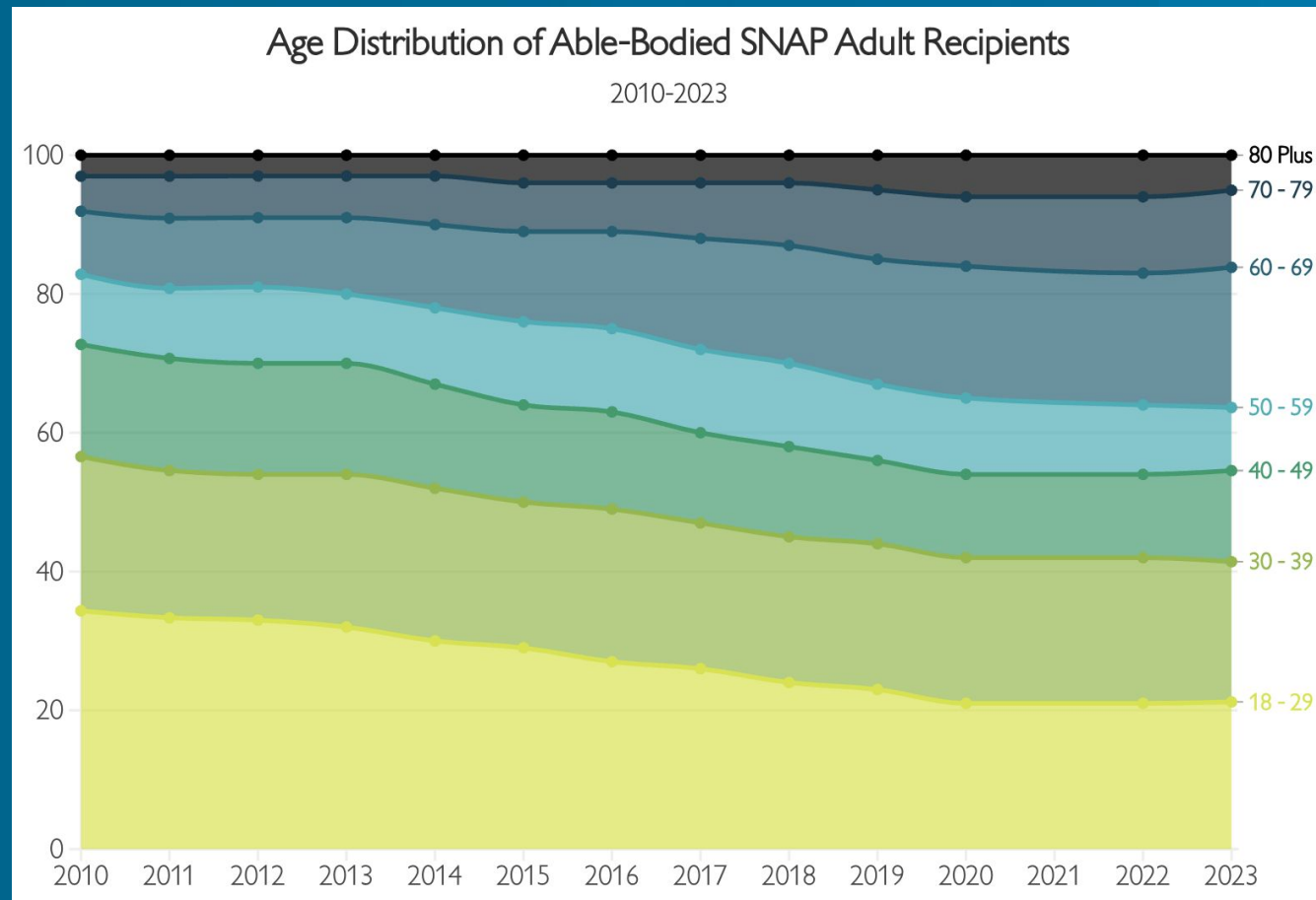
Center on
**Opportunity and
Social Mobility**

Informing policies to promote the American Dream and address economic and Social poverty.

OBBBA Employment Provisions SNAP

- Changes definition of able-bodied adults for time-limit purposes (effective now, 120 day QC grace period)
 - Expands age to 65
 - Parents with children only 14 and older
 - Removes exceptions for homeless, former foster care youth, and veterans (added in 2023)
 - Removes “sufficient job” criteria to request a waiver
 - Hawaii and Alaska exceptions

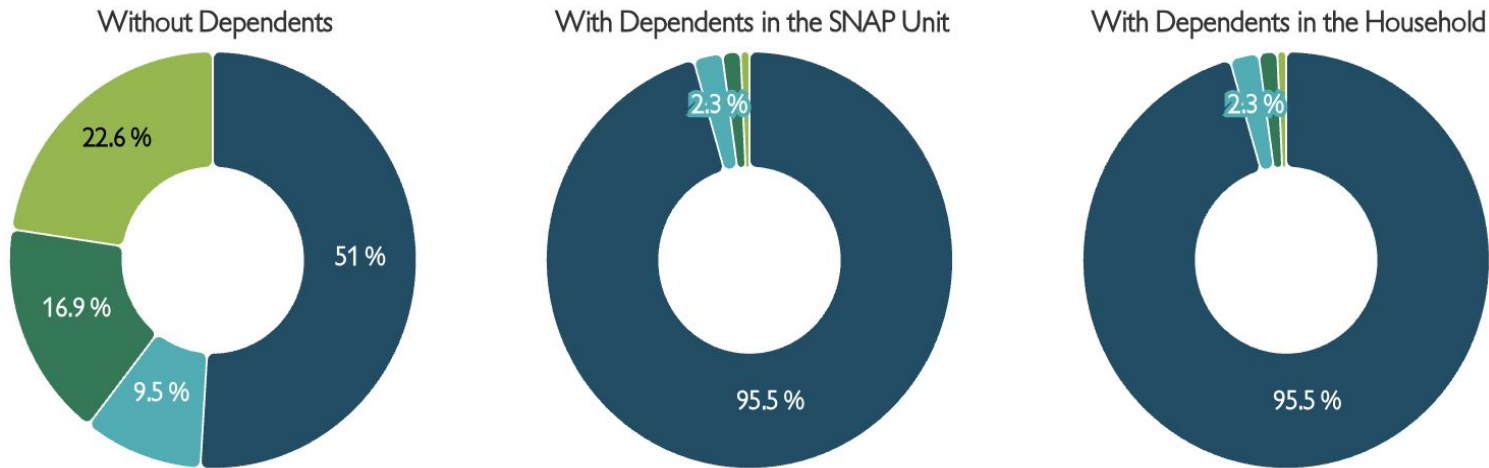
Shifting Age Profile of Able-bodied SNAP Adults (not disabled)



ABAWD Policy Reach: 2010

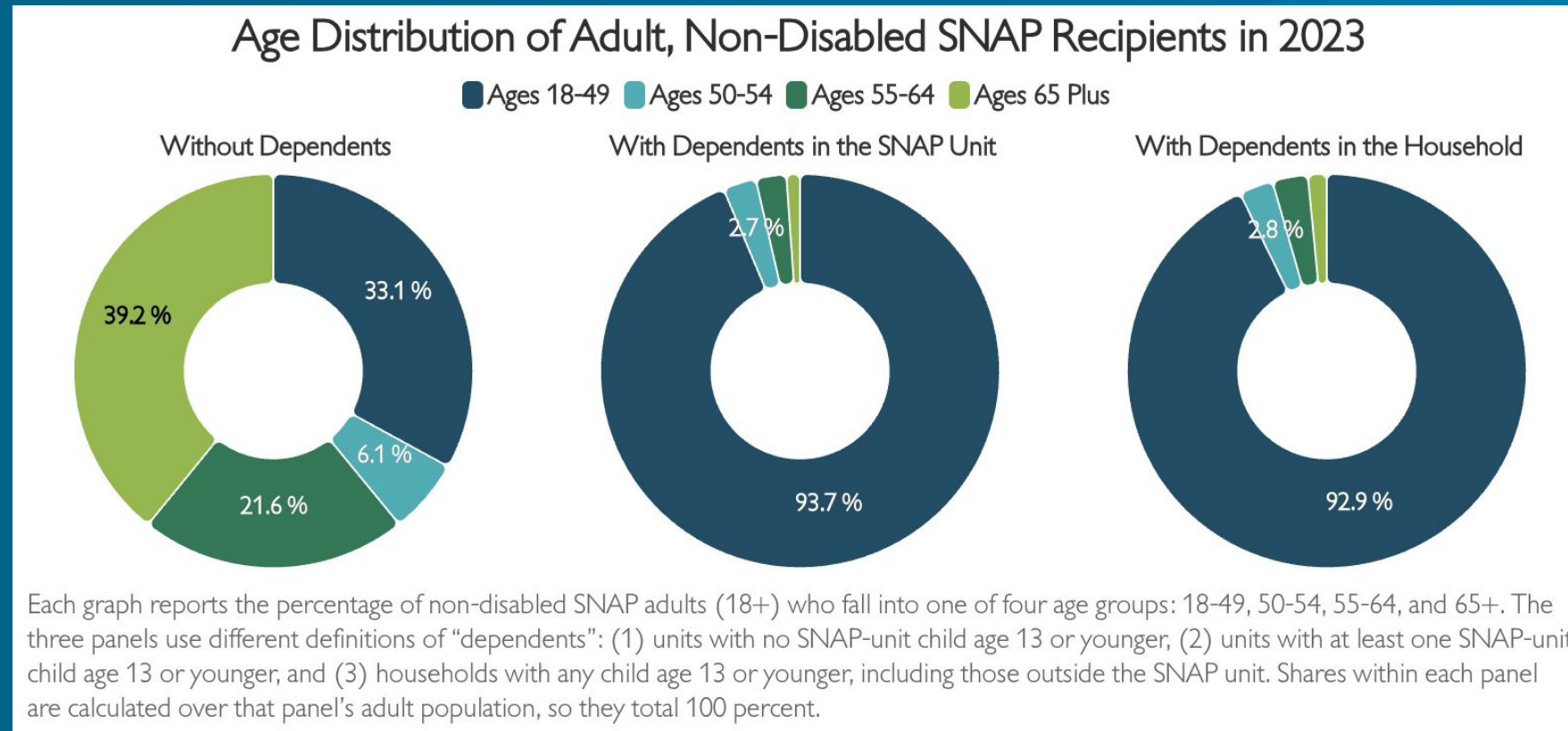
Age Distribution of Adult, Non-Disabled SNAP Recipients in 2010

■ Ages 18-49 ■ Ages 50-54 ■ Ages 55-64 ■ Ages 65 Plus

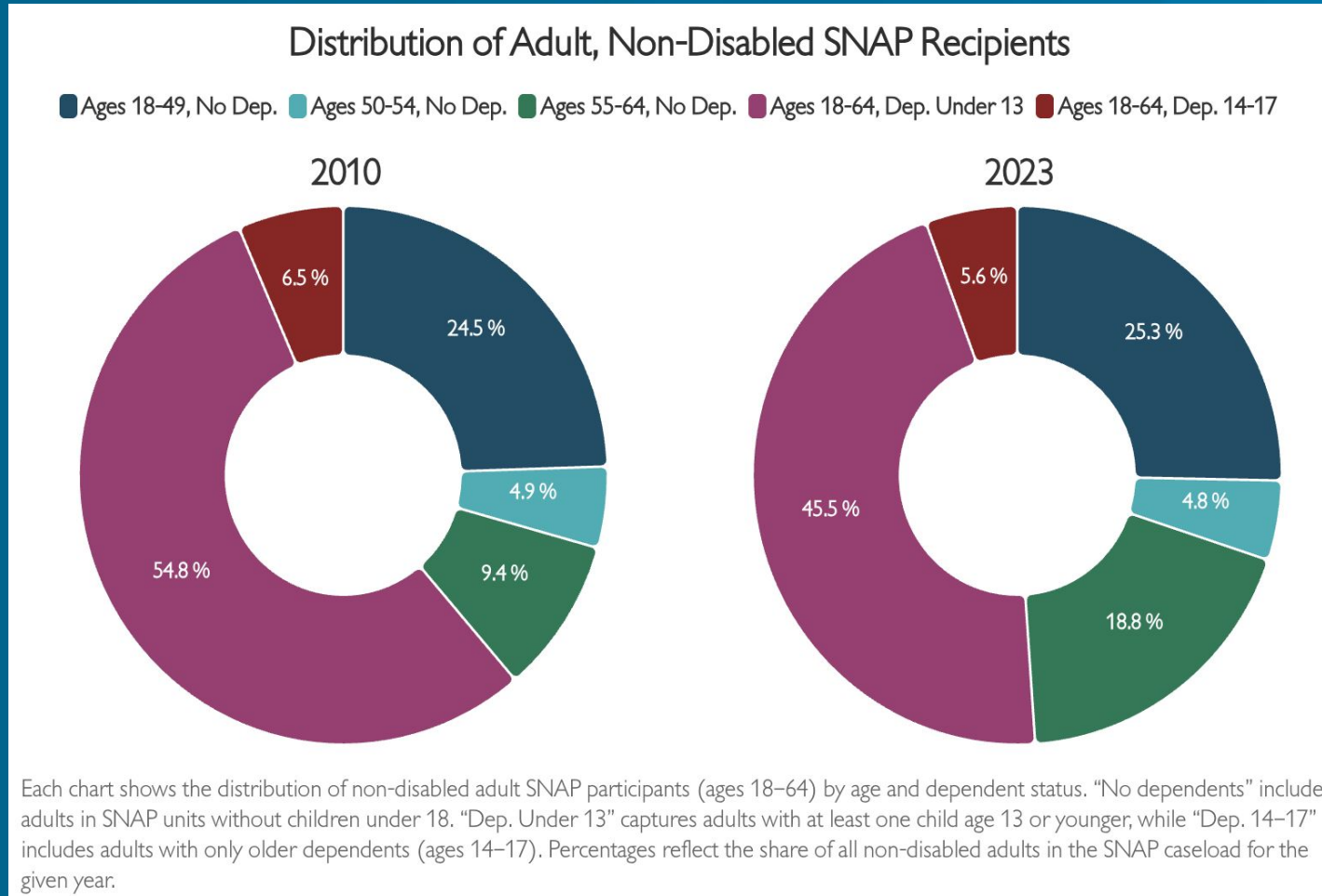


Each graph reports the percentage of non-disabled SNAP adults (18+) who fall into one of four age groups: 18-49, 50-54, 55-64, and 65+. The three panels use different definitions of “dependents”: (1) units with no SNAP-unit child age 13 or younger, (2) units with at least one SNAP-unit child age 13 or younger, and (3) households with any child age 13 or younger, including those outside the SNAP unit. Shares within each panel are calculated over that panel’s adult population, so they total 100 percent.

ABAWD Policy Reach: 2023

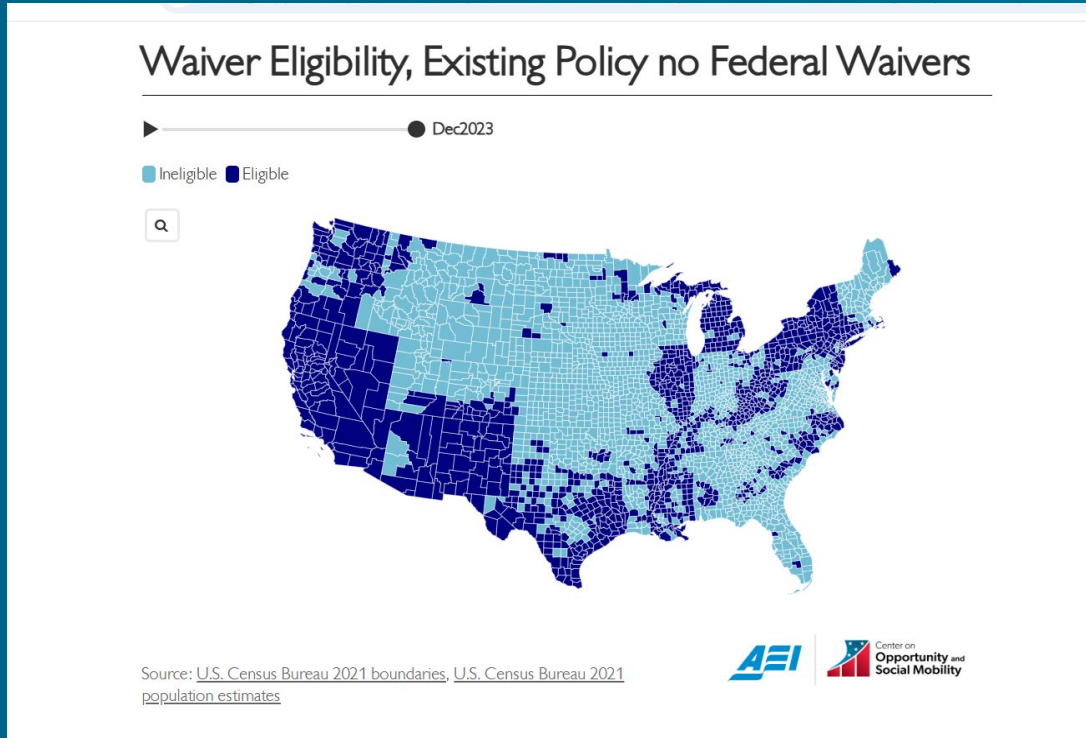


ABAWD Policy Reach: Age 18-64

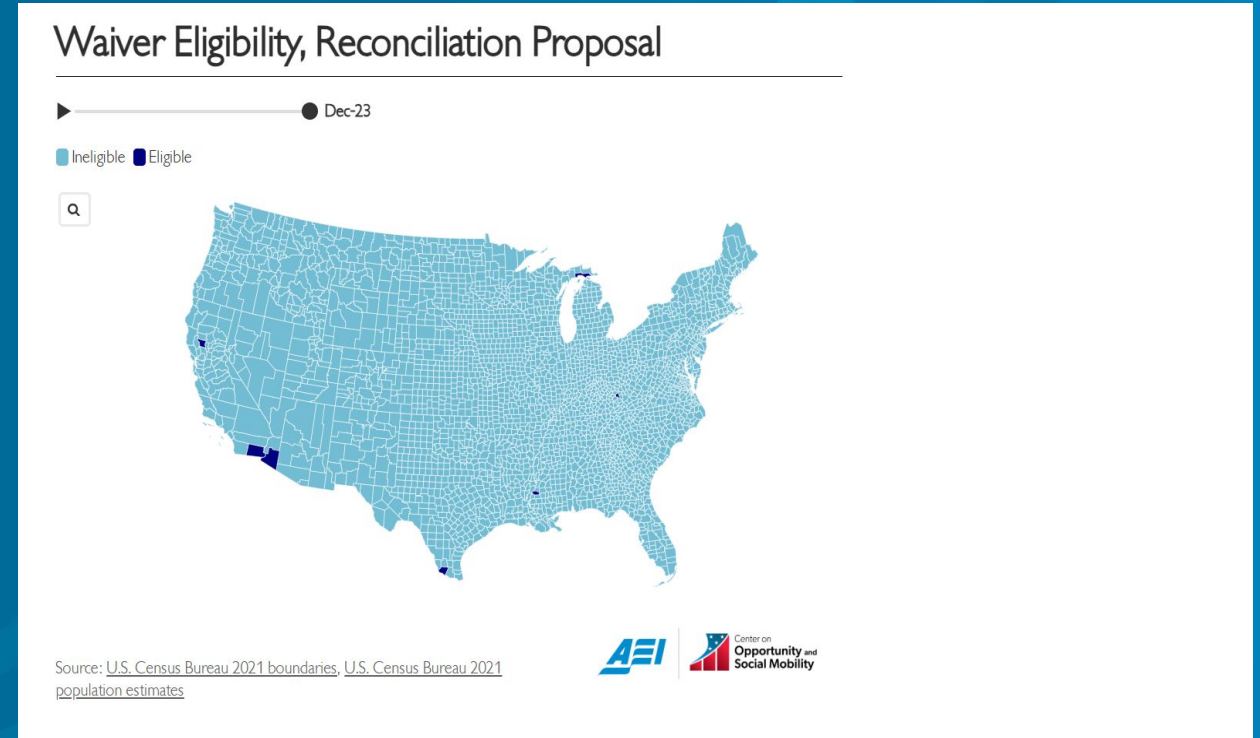


Counties eligible for a Waiver – Dec 2023

Pre-OBBBA



Post-OBBBA



Implications for States

- Much larger share of adult caseload are now subject to work requirements
 - Nationally approx. 30% of non-disabled adult caseload to 55%; not considering waivers
- Evidence shows work requirement reduces caseload, with marginal effects on employment

Responsibilities for States

1. Ensure requirements are clearly communicated
2. Track data on caseload and employment
3. Monitor implementation issues
4. Focus on outcomes – employment and earnings