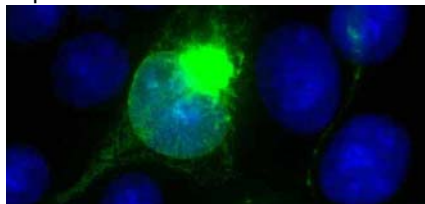


JE1 datasheet

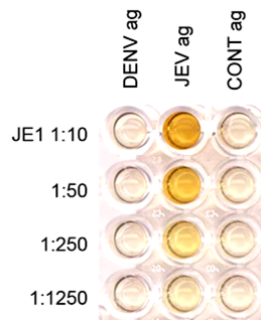
Product name Anti-JE VIRUS antibody, JE1
 Code no. JE1
 Clone ID MV12/1/C2-2/1
 Description Japanese encephalitis virus specific mouse monoclonal antibody.
 Immunogen JEV (Nakayama) infected supernatant followed by lysate booster.
 Specificity This antibody reacts with a conformational epitope on the envelope glycoprotein of JEV.
 Isotype IgG2a, kappa.
 Intended use This monoclonal antibody is intended for use in the IgM capture ELISA for the diagnosis of JEV IgM in patient serum samples. For the diagnosis of JE infections in regions where dengue co-circulates, this antibody is used together with the dengue specific monoclonal antibody, DE1. It is the JEV specific monoclonal antibody currently being used in the commercially available Japanese encephalitis IgM dot blot assay (Venture Technologies Sdn Bhd).

Reagent provided This product is supplied as cell culture supernatant and contains 10mM sodium azide.
 Storage Stable for a year at 4°C.
 Applications This monoclonal antibody may also be used in an indirect immunofluorescence assay for the detection of JEV antigens in infected cells. It has been tested in other ELISA formats including a JEV IgM capture ELISA for the monitoring of JEV infections in pigs, a JEV antigen capture ELISA and the JEV IgG capture ELISA.

Data



JEV (Nakayama) infected PS Clone D cells.

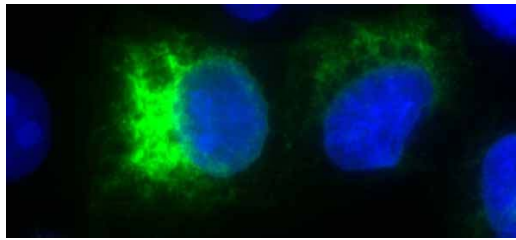


JE1 titration in an IgG capture ELISA.

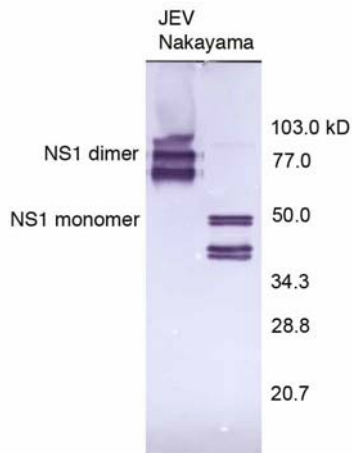
JN1 datasheet

Product name	Anti-JEV NS1 antibody, JN1
Code no.	JN1
Clone ID	MV12/2/A5-1/6
Description	JEV non-structural protein 1 specific mouse monoclonal antibody.
Immunogen	JEV (Nakayama) infected supernatant followed by lysate booster.
Specificity	This monoclonal antibody reacts with a conformational epitope present on JEV NS1.
Isotype	IgG3, kappa.
Reagent provided	This product is supplied as cell culture supernatant and contains ProClin150.
Storage	Stable at 4°C.
Applications	This monoclonal antibody is intended for use in the western blot (non-reducing unheated conditions) and in an indirect immunofluorescence assay. It has been described in a JEV IgM capture ELISA for differentiating natural infections in a JEV vaccinated population.

Data



Immunofluorescence of JEV (Nakayama) infected PS Clone D cells with JN1.

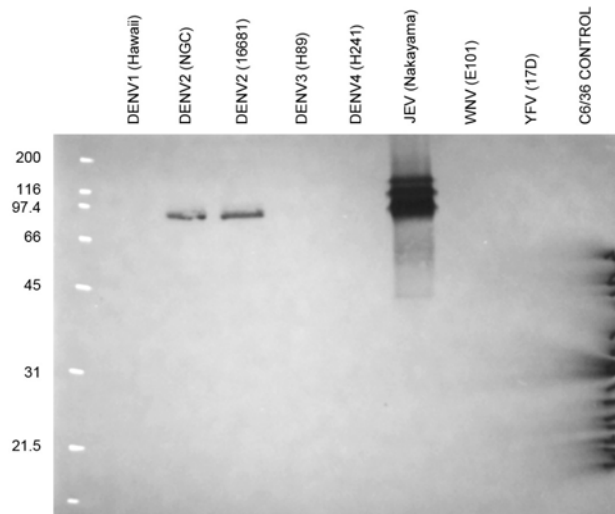


JEV (Nakayama) infected C6/36 lysate probed with JN1.

JN2 datasheet

Product name Anti-JEV NS1 antibody, JN2
 Code no. JN2
 Clone ID MF11/1/D3-2/B5
 Description JEV non-structural protein 1-reactive mouse monoclonal antibody
 Immunogen JEV infected supernatant/lysate
 Specificity This monoclonal antibody reacts with the non-structural protein 1 (NS1) of JEV with some cross-reactivity with DENV2 NS1
 Isotype IgG2b, kappa.
 Intended use Research reagent.
 Reagent provided This product is supplied as cell culture supernatant and contains ProClin150.
 Storage Stable at 4°C.
 Applications This monoclonal antibody has been primarily used for the detection of dimeric JEV NS1 protein band in western blot immunoassay.
 It has not been tested in ELISA or for use in immunofluorescence assays.

Data



Lysates from infected C6/36 cells treated with SDS-PAGE non-reducing sample buffer and loaded onto gel as unheated samples to detect reactivity to NS1 dimer (expected size 86kD)