

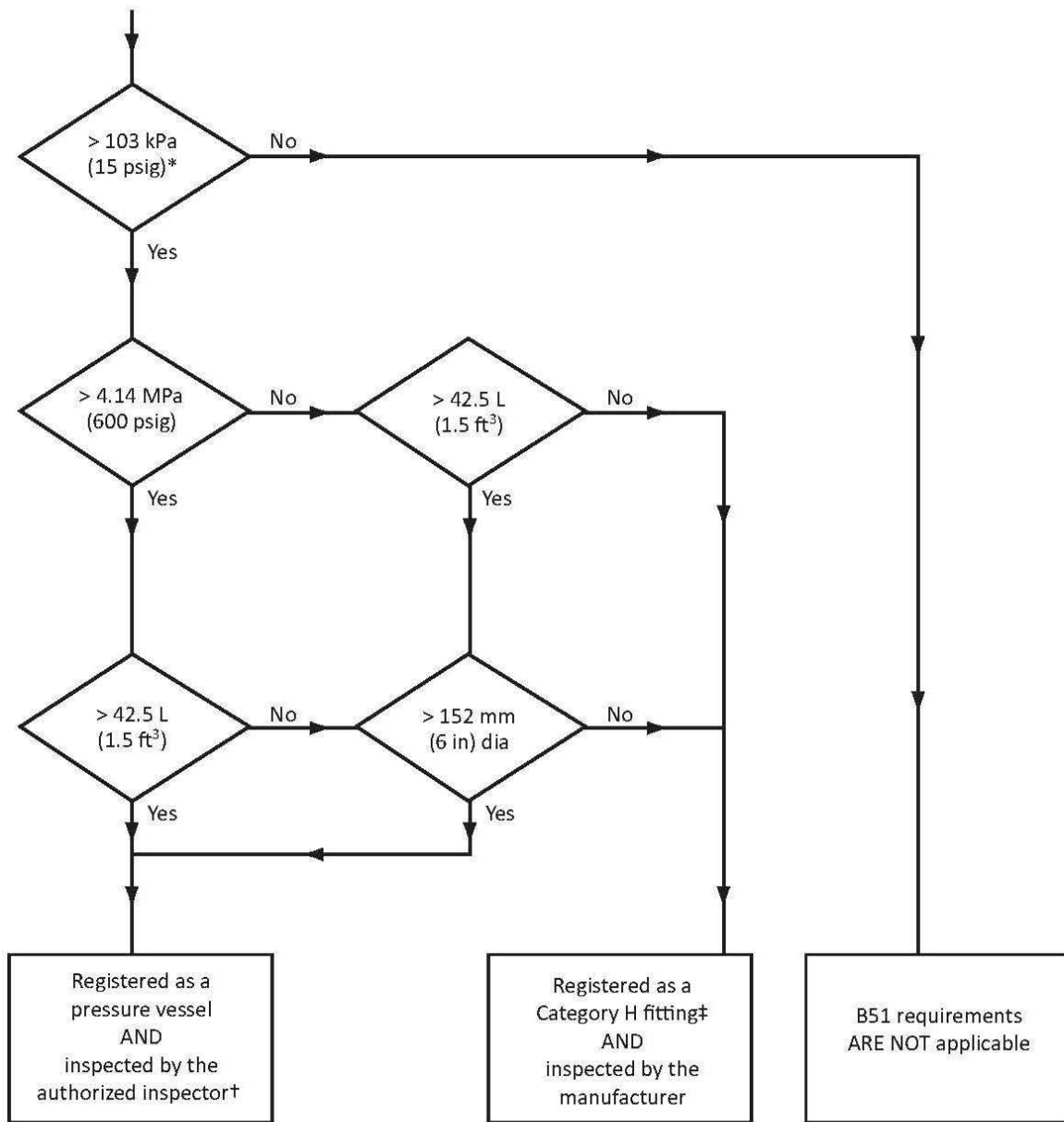
\*Maximum allowable working pressure (MAWP).

†See Clause 4.8.2 for exceptions to inspection requirements.

‡See Table 1.

**Figure 1(a)**  
**Registration and inspection requirements for pressure vessels**  
**(and pressure vessels registered as Category H fittings) for liquid**  
**service with liquids not more hazardous than water**

(See Clauses 4.1.1 and 4.8.2, Table 1, and Figure 1(b).)



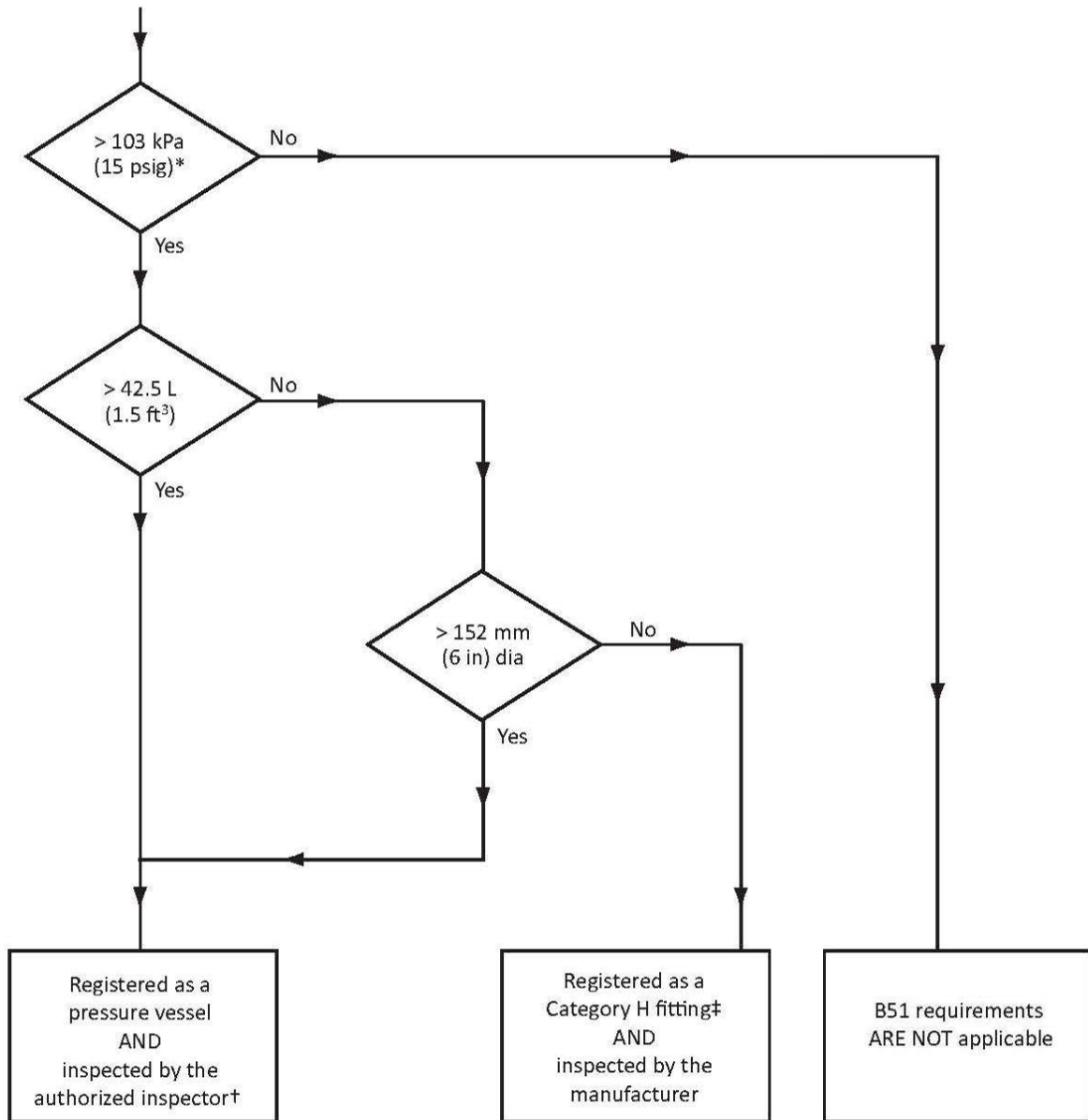
\*Maximum allowable working pressure (MAWP).

†See Clause 4.8.2 for exceptions to inspection requirements.

‡See Table 1.

**Figure 1(b)**  
**Registration and inspection requirements for pressure vessels**  
**(and pressure vessels registered as Category H fittings) containing**  
**a non-lethal gas or vapour or a non-lethal liquid not covered**  
**by Figure 1(a)**

(See Clauses 4.1.1 and 4.8.2 and Table 1.)



\*Maximum allowable working pressure (MAWP).

†See Clause 4.8.2 for exceptions to inspection requirements.

‡See Table 1.

**Figure 1(c)**  
**Registration and inspection requirements for pressure vessels**  
**(and pressure vessels registered as Category H fittings)**  
**containing lethal substances**  
 (See Clauses 4.1.1 and 4.8.2 and Table 1.)