

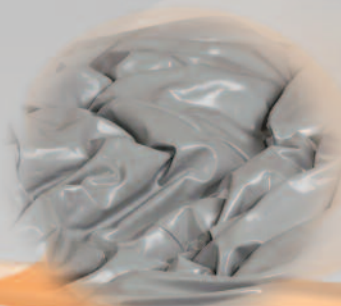
# JAY<sup>®</sup> SIGNATURE SERIES



  
*Signature*  
SERIES

1983

**JAY Medical founder Rick Jay launches the JAY Cushion**, featuring technology from Hansen ski boots. The first wheelchair cushion to utilize fluid, the JAY Cushion began JAY Flow Fluid's 30-year legacy of long-lasting, zero-maintenance skin protection.



1990

**JAY Medical introduces the JAY J2 cushion.** One of the most trusted wheelchair cushions on the market today, the JAY J2 incorporates a stable foam base constructed from the highest quality materials with JAY's proven fluid technology.



2001

**Sunrise Medical celebrates the one millionth JAY cushion sold!** With rigorous testing that exceeds industry standards and a satisfaction rate of over 99%, JAY's level of quality is unsurpassed.



2007

**Sunrise Medical introduces the JAY J3 Back**, the first to use anthropometric data— or measurements of the size and proportions of the human body— to perfect backrest contours, shapes, and heights for client sizes, lifestyles, and levels of injury.





1994

**JAY joins Quickie wheelchairs** under the Sunrise Medical umbrella to provide the best combination of wheelchair and seating technology in the industry.



2012

**Sunrise Medical introduces JAY's innovative, dual-cover technology**, featuring water-resistant inner covers with AquaGuard zippers and anti-wicking seam thread, and outer covers with X-Static anti-bacterial fiber.

2010

**Sunrise Medical organizes the Clinical Advisory Board**—an elite group of clinicians who specialize in seating and mobility— to review, critique, and assist in existing and new product development.

Since 1983, JAY has engineered products that provide the optimal combination of support, comfort and protection through progressive design and advanced materials. As industry pioneers, we have commissioned multiple scientific studies, worked with top researchers, and tested our products to exceed industry standards. While our products may look simple in nature, JAY combines science, technology and design to provide superior clinical seating.

The JAY Signature Series products are the result of 30 years of research and customer feedback.

The most elite of JAY's  
**Superior Clinical Seating.**

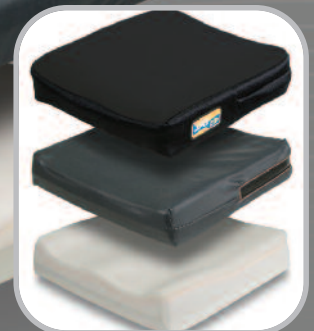


## What makes the Ion unique?

- Dual-layered foam base that combines structural support and comfort
- Firmness determined by the cushion width– which corresponds with client weight– that creates individualized support
- Visco<sup>™</sup> memory foam top layer that provides maximum comfort
- PEDIATRIC OPTION:** the JAY Zip pediatric cushion offers the same level of skin protection and stability as the Ion, but features smaller sizes, lower weights, an extra cover, and softer foam for active kids and teens

## The Ion or Zip Cushion may be right for you if...

- You have impaired or absent sensation and/or protruding bony prominences on the sitting surfaces
- You can shift your weight while sitting in your wheelchair
- You would benefit from extra positioning or stability
- You use your wheelchair for extended periods of time throughout the day



**Pediatric Option: JAY Zip**

## Ion Rating Scale

Side-to-Side Stability:

3 4 5

Forward Stability:

3 4 5

Skin Protection:

3 4 5

## Technical Specifications

JAY Ion:	
HCPCS Code	E2607/E2608
Width Range	12" to 24"
Depth Range	12" to 24"
Height	4"
Weight Capacity	300 lbs (14-21" widths) 500 lbs (22-24" widths)

JAY Zip:	
HCPCS Code	E2607
Width Range	8" to 16"
Depth Range	8" to 18"
Height	2.75"
Weight Capacity	165 lbs



Ion product page



Zip product page

## What makes the Union unique?

- Contoured foam base with 1" pelvic supports that offer superior positioning and stability
- Visco™ memory foam top layers that provide maximum comfort
- JAY Flow™ fluid insert beneath Visco foam that conforms to each individual's shape for superior pressure distribution

## The Union Cushion may be right for you if...

- You have a history of skin breakdown, or impaired/absent sensation and/or protruding bony prominences on the sitting surfaces
- You can shift your weight while sitting in your wheelchair
- You would benefit from extra positioning or stability
- You use your wheelchair for extended periods of time throughout the day



Reduced Profile Option

## Union Rating Scale

Side-to-Side Stability:

4

5

Forward Stability:

4

5

Skin Protection:

3.5

5



Union product page

## Technical Specifications

HCPCS Code	E2607/E2608
Width Range	14" to 24"
Depth Range	14" to 24"
Height	4.5" (3.5" with Reduced Profile Option)
Weight Capacity	300 lbs (14-21" widths) 500 lbs (22-24" widths)



## What makes the X2 unique?

- Non-contoured foam base that allows for comfortable sitting at the front of the cushion during daily activities
- Removable 1" thigh supports that provide side-to-side stability
- Zero-maintenance JAY Flow<sup>™</sup> fluid insert that conforms to each individual's shape for superior pressure distribution

## The X2 Cushion may be right for you if...

- You have a history of skin breakdown, or impaired/absent sensation and/or protruding bony prominences on the sitting surfaces
- You can shift your weight while sitting in your wheelchair
- You would benefit from extra positioning or stability
- You use your wheelchair for extended periods of time throughout the day



## X2 Rating Scale

Side-to-Side Stability:

3		4	5
2	3	4	5
4			5

Forward Stability:

Skin Protection:



X2 product page

## Technical Specifications

HCPCS Code	E2622
Width Range	14" to 20"
Depth Range	14" to 20"
Height	2.25"
Weight Capacity	300 lbs

# JAY<sup>®</sup> J2<sup>™</sup> Series

The JAY<sup>®</sup> J2<sup>™</sup> is a contoured foam cushion that features JAY Flow<sup>™</sup> fluid and an easy-to-modify base for skin protection and stability.

## What makes the J2 unique?

- Contoured base constructed from closed cell foam that allows modifications to accommodate unique needs and shapes
- Extensive selection of positioning components that provide exceptional side-to-side and forward stability
- Zero-maintenance JAY Flow<sup>™</sup> fluid tripod that conforms to each individual's shape and adjusts to sitting positions for superior pressure distribution
- DEEP CONTOUR OPTION:** The J2 Deep Contour features a 3" deep well and a JAY Flow Fluid tripod with increased fluid volume for the highest level of stability and skin protection

## The J2 Series Cushions may be right for you if...

- You have a history of skin breakdown
- You are not able to shift your weight while sitting in your wheelchair
- Your positioning requirements may change over time
- You use your wheelchair for extended periods of time throughout the day



J2 series product page



JAY J2 Deep Contour

### Rating Scale

	J2			J2 Deep Contour		
Side-to-Side Stability:	4		5	4		5
Forward Stability:	3	4	5	4		5
Skin Protection:			4.5			5

### Technical Specifications

HCPSC Code	E2622/E2623/ E2624/E2625
Width Range	14" to 24"
Depth Range	14" to 20"
Height	J2: 2.5" J2 DC: 4.5"
Weight Capacity	250 lbs

## What makes the Fusion unique?

- Contoured base constructed from closed cell foam that allows modifications to accommodate unique needs and shapes
- Soft, contoured top layer that offers additional positioning and comfort
- Well area width determined by using average pelvic bone measurements of individuals using each cushion size to accommodate the majority of users
- Option of JAY Flow<sup>™</sup> fluid tripad or ROHO DRY FLOATATION<sup>®</sup> air insert that provide skin protection to match your personal preference

## The Fusion Cushion may be right for you if...

- You have a history of skin breakdown
- You are not able to shift your weight while sitting in your wheelchair
- Your positioning requirements may change over time
- You use your wheelchair for extended periods of time throughout the day



Reduced Profile Option

### Fusion Rating Scale

Side-to-Side Stability:

Forward Stability:

Skin Protection:

	4.5
4	5
	4.5

### Technical Specifications

HCPCS Code	E2622/E2623
Width Range	14" to 24"
Depth Range	14" to 24"
Height	4" (3-3/8" with Reduced Profile Option)
Weight Capacity	300 lbs (14-21" widths) 500 lbs (22-24" widths)



Fusion product page



## What makes the J3 unique?

- Five contour shapes provide individualized side-to-side stability
- Four support heights and shapes allow you to select the ideal backrest for your torso height and injury level
- Four hardware options optimized for varying requirements, wheelchair types, and easier installation
- Carbon Fiber option weighs as little as 2.2 lbs. with hardware
- Accessories include Whitmyer headrests, lateral thoracic supports, and the CradleU Lateral
- PEDIATRIC OPTION:** The JAY Zip pediatric back features smaller sizes, lower weights, and contour shapes for active kids and teens

## The J3 or Zip Back may be right for you if...

- You require posterior pelvic support
- You would benefit from mild to maximum side-to-side stability
- You would benefit from an open back angle for improved posture and vision
- You need to be able to quickly remove your backrest from your wheelchair
- You require a head support, additional positioning, or skin protection along your spine



J3 Back product page



Zip Back product page



**Carbon Fiber Option**

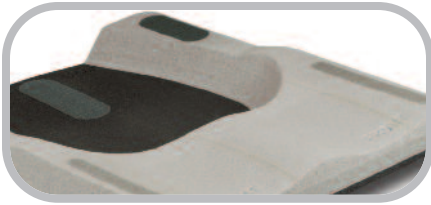


**Pediatric Option: JAY Zip**

## Technical Specifications

JAY J3:	
HCPCS Code	E2613/E2614/ E2615/E2620
Width Range	12" to 26"
Height Range	6.5" to 24"
Weight Capacity	300 lbs (14-21" widths) 500 lbs (22-24" widths)

JAY Zip:	
HCPCS Code	E2613
Width Range	8" to 14"
Height Range	6" to 12"
Weight Capacity	165 lbs



## **Structural Foam**

- Provides side-to-side and forward stability to help promote and maintain proper posture
- Closed cell foam may be cut away to create custom shapes



## **Visco™ Memory Foam**

- Conforms to each individual's shape
- Distributes weight over a larger area for pressure reduction
- Provides additional sitting comfort



## **JAY Flow™ Fluid Insert**

- Conforms to each individual's shape
- Adjusts to changing sitting positions
- Ensures placement of fluid beneath bony prominences at all times to help protect the skin from breakdown
- Requires zero maintenance



## **ROHO DRY FLOATATION™ Air Insert**

- Adjusts to changing sitting positions
- Air levels may be adjusted at any time to accommodate changing needs and asymmetrical postures



## **Inner Cover with Anti-Wicking Seam Thread and AquaGuard™ Zipper**

- Water-resistant coating is easy to wipe off and clean
- AquaGuard zipper and anti-wicking seam thread prevent moisture from seeping through zipper teeth and seams and damaging the foam base



## **X-Static™ Fabric in Outer Covers**

- Silver threads in material naturally inhibit bacterial growth
- 4-way stretch reduces surface tension to prevent skin breakdown



**We stand behind the compatibility of our products. When you order JAY Seating with a Quickie, Zippie, or Breezy mobility base on one order and with one PO, we will:**

- Issue you one invoice
- Tie the shipments' tracking numbers together
- Inspect the order for compatibility before it leaves our plant

**If your seating system and mobility base are not compatible when you receive them, we will address the issue by the next business day.**

# Compatibility Assurance



[Learn more](#)



**JAY Your Way is a modification program designed to individualize and customize JAY products. Don't see what you want on the order form? Looking for a color option to match your wheelchair? Check out the JAY Your Way Catalog for a list of examples of the modifications that can be done in our manufacturing facility. Options include:**

- Colored cushion covers
- Colored backrest shells that can be matched to any Quickie or Zippie manual frame color
- Cushion base size and positioning modifications
- Fluid insert modifications



[JAY Your Way Catalog](#)



Customer Service: 800.333.4000  
[www.SunriseMedical.com](http://www.SunriseMedical.com)

©11.2016 Sunrise Medical (US) LLC  
128487 Rev. F