

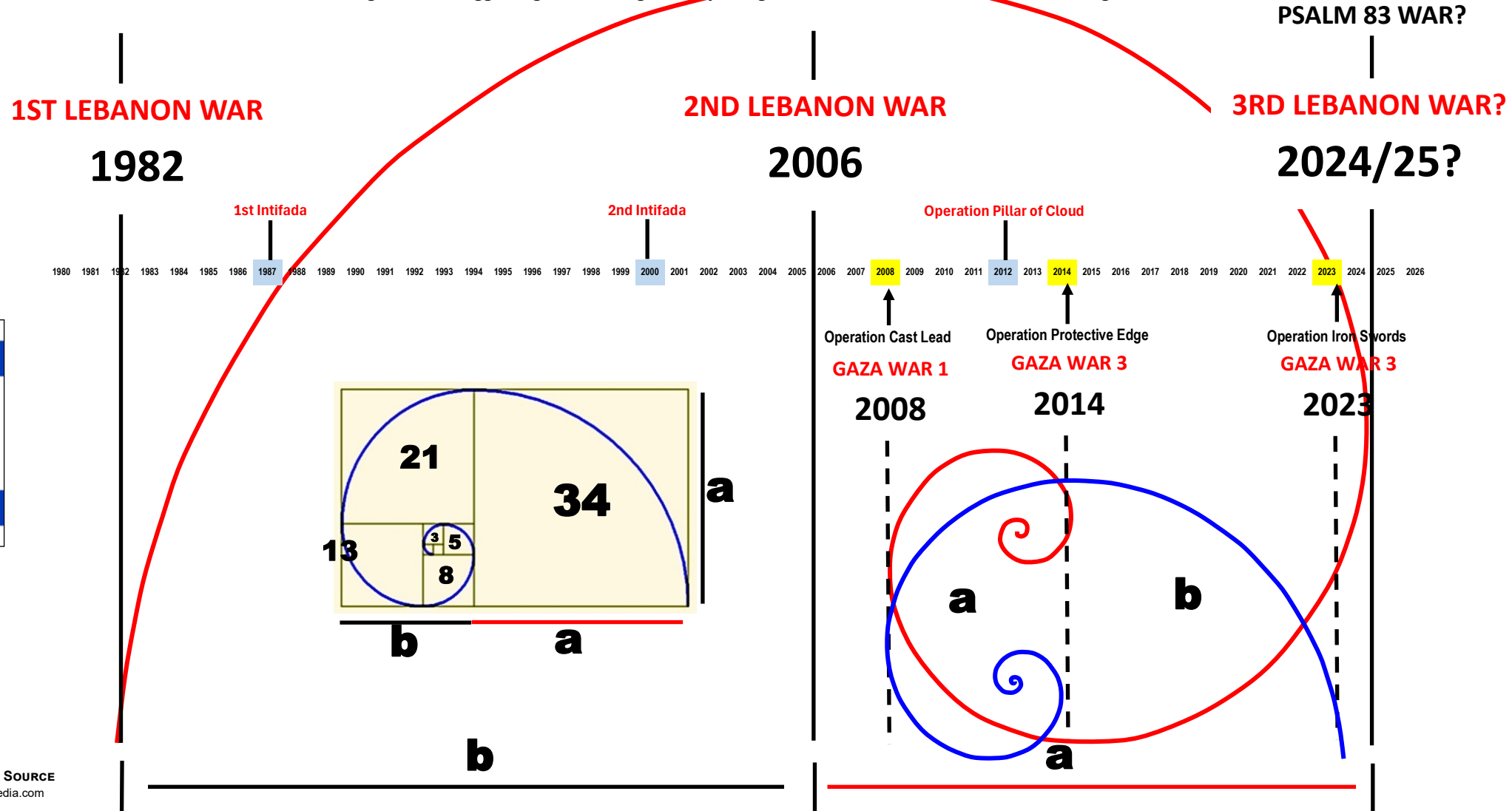
ISRAELI WARS - PROPHETIC PATTERNS

IN PHI RATIO PATTERNS OF TIME

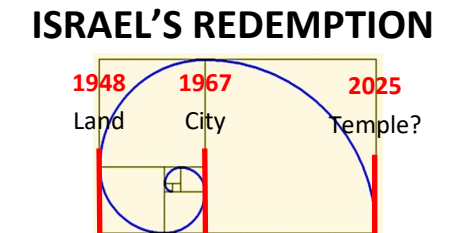
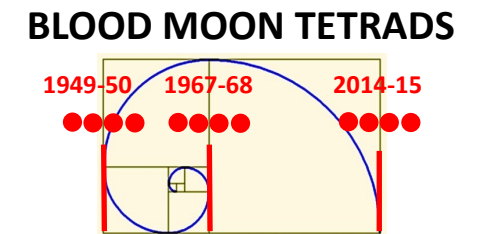
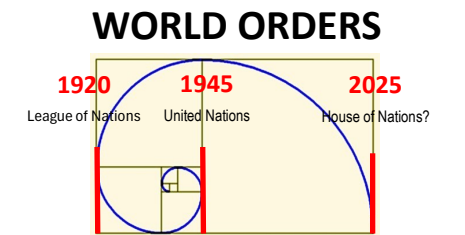
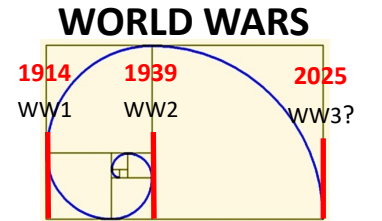
The purpose of this Chart is to illustrate that based on one's Theory of the Phi Ratio being a Pattern of 'GOD's Signature', it can be applied to the Pattern of Israeli Wars, Past, Present and Future, perhaps. In this case, that of the Wars between Israel and its Muslim Inner-Ring Enemies. One theorizes that by knowing 2 Events on a Timeline, the 3rd Event will follow, approximately. One has applied this Phi Ratio Pattern to predict when the 3rd Major War in Israel is to occur. This in turn is also based on the many Minor Wars that have ensued and will again be based on the Phi Ratio Pattern Theory. Applying this Phi Ratio Pattern to Biblical Prophecy, one theorizes that Events such as when the 3rd Temple in Israel is to be built, for example, can be ascertained. This Phi Ratio Pattern is seen in Creation and was the Cycle observed in the 3 Series of World Wars, World New Orders, Blood Moon Tetrads and Israel's start of its last Prophetic Week of Years per Daniel, etc. One has taken the Chart, plotting the 2 prior Lebanon Wars. It exemplifies this Phi Ratio Pattern. If what the Triangulation is suggesting, this coming 3rd Major Regional Israeli War will occur in the Mid-August to Mid-October.

LIST OF CONFLICTS - War of the Seeds

- 1985 [South Lebanon conflict](#)
- 1987 [1st Intifada](#)
- 2000 [2nd Intifada](#)
- 2008 Gaza War 1: [Operation Cast Lead](#)
- 2012 [Operation Pillar of Defense](#)
- 2014 Gaza War 2: [Operation Protective Edge](#)
- 2021 [Israel-Palestine Crisis](#)
- 2023 Gaza War 3: [Operation Iron Swords](#)



PSALM 83 WAR?



$a+b/a = a/b = 1.618...$