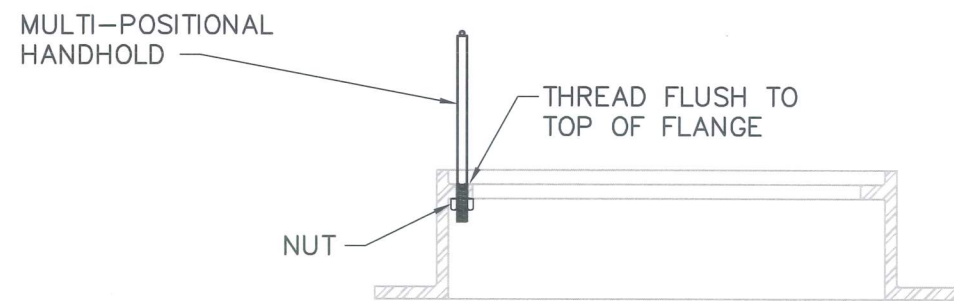
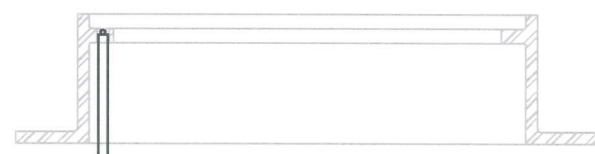


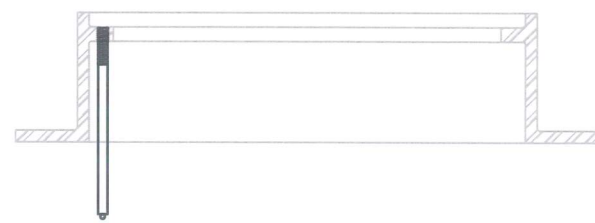
MULTI-POSITIONAL HANDHOLD ON TYP. FRAME
1:10



HANDHOLD UPWARD POSITION



HANDHOLD DOWNWARD POSITION



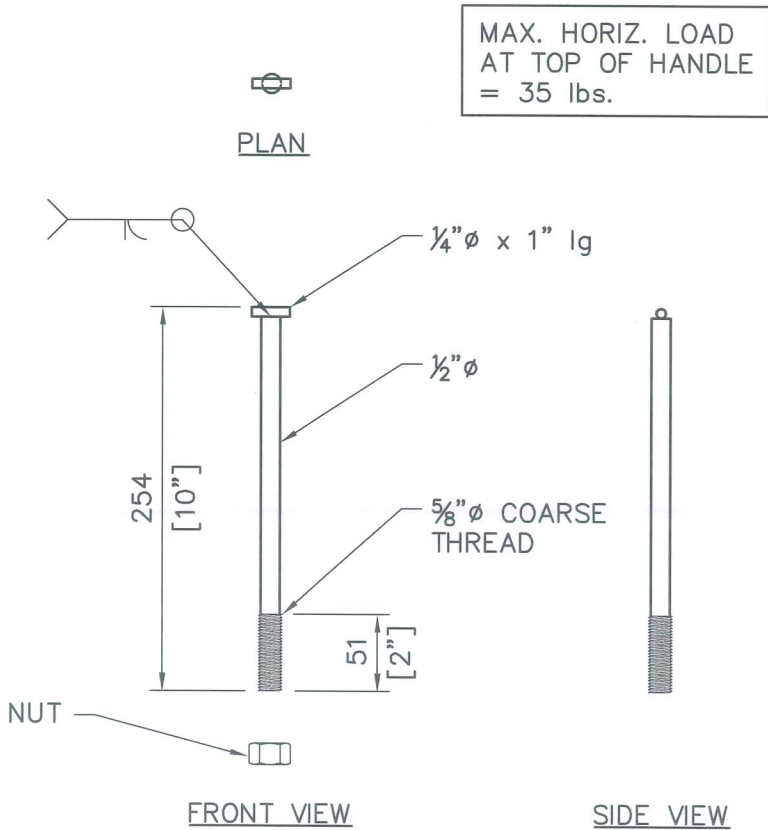
HANDHOLD INVERTED POSITION

SECTION C
1:10

INSTALLATION INSTRUCTIONS:

1. SCREW THE THREADED END OF THE HANDHOLD INTO THE APPROPRIATE SIZE HOLE (WITH COUNTER SINK SLOT) OF THE COVER SUPPORT FLANGE UNTIL THE THREADS ARE LEVEL WITH THE TOP OF THE FLANGE. THE HANDHOLD IS NOW IN THE UPWARD POSITION.
2. ALIGN THE FRAME SO THAT THE HANDHOLD IS CENTERED AND IN VERTICAL ALIGNMENT WITH THE STEP/RUNG IN THE MANHOLE.
3. TO PLACE THE HANDHOLD INTO THE DOWNWARD POSITION, SCREW THE HANDHOLD COMPLETELY THROUGH THE COVER SUPPORT FLANGE AND ALLOW THE HANDHOLD TO DROP INTO THE COUNTERSINK SLOT. ENSURE THAT THE HANDHOLD IS PROPERLY SEATED BELOW THE LEVEL OF THE TOP OF THE COVER SUPPORT FLANGE.
4. A HANDHOLD IN THE DOWNWARD POSITION CAN BE PLACED INTO THE UPWARD POSITION BY LIFTING THE HANDHOLD OUT OF THE COUNTERSINK SLOT, PULL THE HANDHOLD UPWARDLY UNTIL THE THREADS OF THE HAND HOLD MEET THE THREADS ON THE UNDERSIDE OF THE COVER SUPPORT FLANGE. WHILE PULLING THE HANDHOLD UPWARDLY TURN THE HAND HOLD IN A COUNTER CLOCKWISE DIRECTION AND BACK THREAD THE HANDHOLD UNTIL THE THREADS OF THE HANDHOLD ARE LEVEL WITH THE TOP OF THE COVER SUPPORT FLANGE. THE HANDHOLD IS NOW IN THE UPWARD POSITION.
5. TO PLACE THE HANDHOLD INTO THE INVERTED POSITION, SCREW THE HANDHOLD UPWARDLY THROUGH THE APPROPRIATE SIZE HOLE OF THE COVER SUPPORT FLANGE UNTIL THE HANDHOLD IS ONE THREAD BELOW THE TOP OF THE COVER SUPPORT FLANGE.

- NOTES:
1. THIS IS A HANDHOLD ONLY. ITS SOLE PURPOSE IS TO ASSIST A WORKER ENTERING OR EXITING A MANHOLE. NOT TO BE USED AS AN ANCHORAGE POINT FOR A FALL PROTECTION SYSTEM.
 2. ALL ROUND BAR ASTM A307.
 3. ALL ROUND BAR TO BE HOT DIPPED GALVANIZED.



MULTI-POSITIONAL HANDHOLD
1:5



ALL-SPAN
ENGINEERING & CONSTRUCTION LTD.

#201 - 7198 VANTAGE WAY
DELTA, B.C. V4G 1K7
E-mail: all-span@telus.net

PH: (604) 940-2212 FAX: (604) 940-1516

CLIENT: ARMSTRONGS MULTI-POSITIONAL HANDHOLD INC.
PROJECT: MANHOLE FRAME HANDHOLD
DRAWING TITLE: MULTI-POSITIONAL HANDHOLD

DATE	SCALE	DRAWN BY	DESIGN BY	CHECKED BY	APPROVED	PROJECT No.	REV.	DRAWING No.
19/03/14	AS NOTED	J.P.	D.M.			14002		205

H	G	F	E	D	C	B	A	REV.	DESCRIPTION	DATE