


A ID	B OD	C THK.	D HEIGHT	E JOINT HT.	F BASE	G SPACING
1524	1829	152	610	121	203	305
1524	1829	152	720	121	203	305
1524	1829	152	914	121	203	305
1524	1829	152	1219	121	203	305
1524	1829	152	1829	121	203	305

AVAILABLE HEIGHTS	QTY. OF RUNGS	STARCON LIFTING PINS	WEIGHTS [kg]
0.61m [2']	1	4T	2434
0.72m [2.36']	1	4T	2637
0.91m [3']	2	4T	2996
1.22m [4']	3	4T	3560
1.83m [6']	5	4T	4686

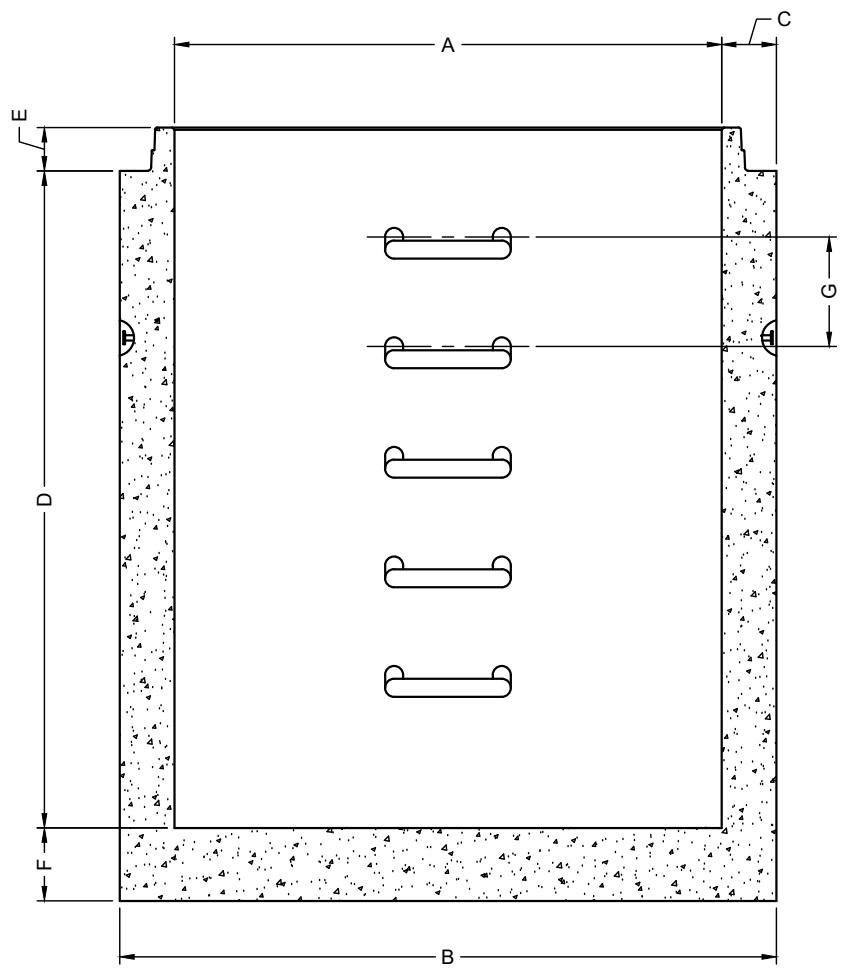
RELEASE	MPa	20
28 DAY:	MPa	35
AIR CONTENT:		6% ± 1%
WEIGHT:	kg	VOLUME m ³
TYPE:		kg/m ³ 2402

STRAND		-	mm	-
		-	MPa	-

MARK	DESCRIPTION	QTY.



ISOMETRIC VIEW
NTS



ELEVATION VIEW



- NOTES:
- 1) CEMENT : PORTLAND CEMENT TYPE 50(HS)
 - 2) Max AGGREGATE SIZE: 20mm
 - 3) 28 DAY STRENGTH: MIN. 35 MPa.
 - 4) ENTRAINED AIR: 6%±1%
 - 5) REINFORCING TO CAN/CSA-G30.18 400 MPa
 - 6) ALL UNITS ARE IN MILLIMETERS UNLESS OTHERWISE NOTED.

DWG. NO.	REFERENCE	NO.:	REVISION DESCRIPTION	BY	APP'D	DATE	DRW BY	SWM	2018/11/21
-	-	A	ISSUED PLAN	-	-	2018/11/21	CH'K BY	-	-
-	-	-	-	-	-	-	AP'D BY	-	-
-	-	-	-	-	-	-	AP'D BY	-	-
-	-	-	-	-	-	-	AP'D BY	-	-
-	-	-	-	-	-	-	SCALE: NTS	PAGE: 1 OF 1	

TITLE:	1500 MONOBASE DETAIL DRAWING	
PROJECT NO.:	JOB NO.:	
DRAWING NO.:	SVI-MB-1500-01A	