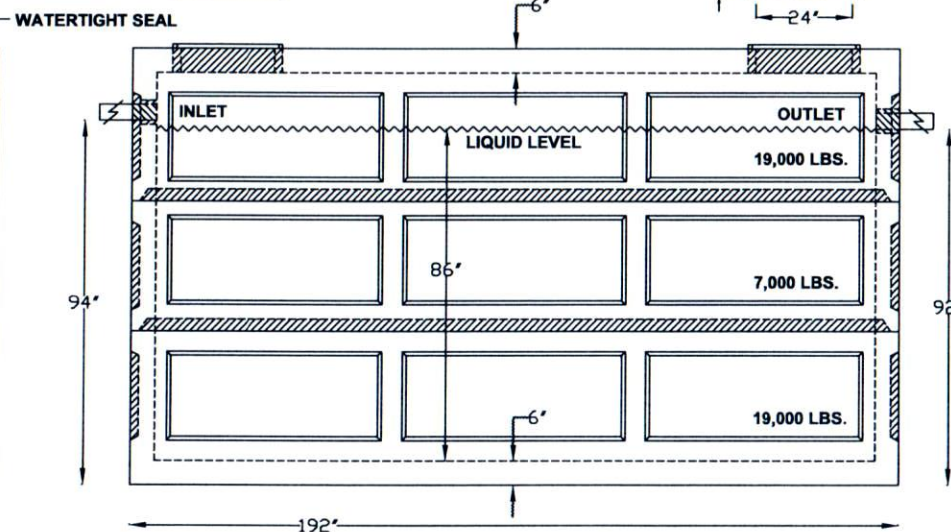
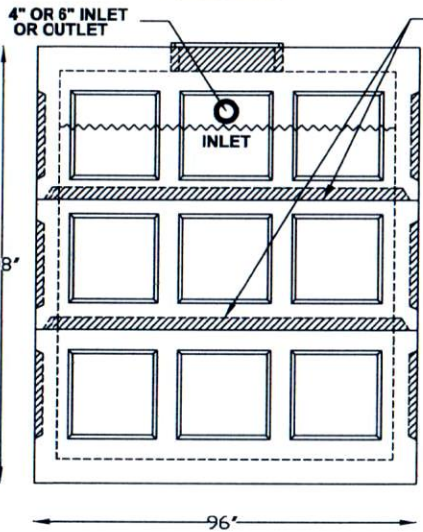
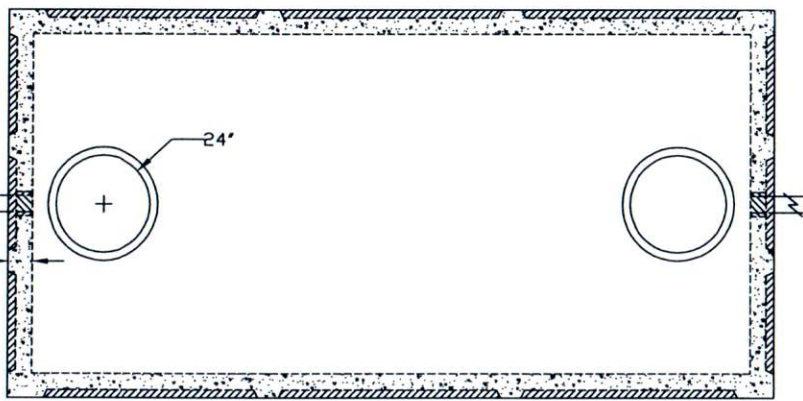


4" X 6" APPROVED LABEL



ALL WALLS 6" THICK



GROVE CONCRETE & SUPPLY, INC.
 18426 DURAND AVENUE P.O. BOX 363
 UNION GROVE, WISCONSIN 53182
 (262) 878-2030 FAX (262) 878-4222
 GroveConcrete.com

NOTES:

1. GALLONS PER INCH - 65.45 gal/in.
2. REINFORCED CONCRETE 4,000 PSI MIN.
3. (GASKETED 4" OR 6" OPENING) PRESS SEAL, TUFF TITE OR EQUAL.
4. ALL BAFFLES & FILTERS TO BE INSTALLED TO MEET STATE & LOCAL CODES.
5. OPTIONAL 4", 6", OR LARGER BOOTS FOR BOTTOM LINK.

5,630 GALLON SEPTIC, GREASE TANK
 6,284 GALLON HOLDING TANK
 FOR ANY MODIFICATIONS CALL
 GROVE CONCRETE

DRAWN BY: RAY	DATE: 8/20/14
SCALE: NTS	EST. WEIGHT: 45,000 LBS.
DWG. # TNK-5630-6284	VERSION: 00002
ILL. APPROVAL # 114 STATE OF WIS. APPROVED	

THIS DRAWING AND THE INFORMATION CONTAINED HEREON IS THE EXCLUSIVE PROPERTY OF GROVE CONCRETE & SUPPLY, INC., AND SHALL NOT BE REPRODUCED, USED, OR DISCLOSED TO OTHERS EXCEPT AS AUTHORIZED THROUGH WRITTEN CONSENT FROM GROVE CONCRETE & SUPPLY, INC.