



Model: Frontier V6 Hybrid Front Wheel Drive

201 Growth Parkway Angola, IN 46703

U.S Suggested Retail Price List  
Jan-19

Phone: 260-665-2769  
Fax: 260-665-3047  
Email: iim@mobility-usa.com  
www.mobility-usa.com

Quote: \_\_\_\_\_

P.O. \_\_\_\_\_

**Bill To:**

Dealer: \_\_\_\_\_ Contact: \_\_\_\_\_

Address: \_\_\_\_\_

City: \_\_\_\_\_ State: \_\_\_\_\_ Zip: \_\_\_\_\_

Phone: \_\_\_\_\_ Fax: \_\_\_\_\_

Email: \_\_\_\_\_ Mark For: \_\_\_\_\_

**Ship To:**

Same as Bill To: \_\_\_\_\_

Dealer: \_\_\_\_\_ Contact: \_\_\_\_\_

Address: \_\_\_\_\_

City: \_\_\_\_\_ State: \_\_\_\_\_ Zip: \_\_\_\_\_

Phone: \_\_\_\_\_ Fax: \_\_\_\_\_

Email: \_\_\_\_\_ Mark For: \_\_\_\_\_

**Client Information and Specifications:**

Demo Performed:  Yes  No

Client Name: \_\_\_\_\_

A) Top of Shoulders: \_\_\_\_\_

Diagnosis: \_\_\_\_\_

B) Chest Depth: \_\_\_\_\_

C) Chest Width: \_\_\_\_\_

D) Seat Depth: \_\_\_\_\_

Funding Source: \_\_\_\_\_

E) Top of Head: \_\_\_\_\_

F) Elbow to Hand: \_\_\_\_\_

Client Age: \_\_\_\_\_

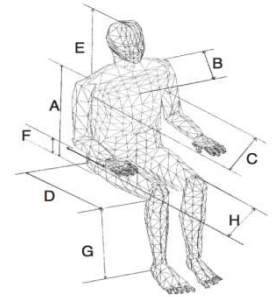
G) Knee to Foot: \_\_\_\_\_

Weight: \_\_\_\_\_

H) Hip Width: \_\_\_\_\_

Height: \_\_\_\_\_

I) Seat Pan to Elbow: \_\_\_\_\_



**Frontier V6 Front Wheel Drive Features and Specifications**

Joystick/Power Module: Penny and Giles R-net

Length: 39" Width: 26.25"

Turning Radius: 20.5"

Weight Limit: 400 lbs - 340lbs with elevate

Motors: (2) 4 Pole, 24 Volt Motors, 800W each, Gear in Line

Batteries: (2) Group 24, 73 Amp hr

Drive Tires: Black Pneumatic 14"x3"

Castors: Black Pneumatic or Foam-Filled 2.50-4

Top Speed: 6.5 mph

Performance will vary depending on weight and power options

Product Weight- No power seat frame, MPS seat, standard legrests and batteries: 259 lbs

Product Weight- Including power tilt, variable seat height, power recline back,

Power elevating legrests and batteries: 330 lbs

Weights vary depending upon options

Warranty: Limited Lifetime on Frames

1 Year Limited on Electronics

2 Year Limited on Motors



Other Products by:

Extreme X8 4x4, Frontier V6 AT, Frontier V6 Hybrid,  
Frontier V6 C73, V6 Rear Wheel Drive

**Frontier V6 Front Wheel Drive Base Options**

Part Number	Description	Price	HCPCS Code
_____ V6 HYB	<b>V6 Front Wheel Drive Compact Base No Power</b> Price Includes: Front Wheel Drive Base Set Up for No Power Seat Function, Independent Articulating Suspension, Charger, and Standard Positioning Belt. <u>Must Choose:</u> _____ Rehab Seat or _____ MPS Back w/ Solid Seat Pan _____ MPS Seat and Back Cushion	\$11,150.00	K0850 K0851
_____ V6 HYB	<b>V6 Front Wheel Drive Base Single Power</b> Price Includes: Front Wheel Drive Base Set Up for Single Power Options Independent Articulating Suspension, Charger, and Standard Positioning Belt. <u>Must Choose:</u> _____ Rehab Seat or _____ MPS Back w/ Solid Seat Pan _____ MPS Seat and Back Cushion	\$11,150.00	E2377 K0858 K0859
_____ V6 HYB	<b>V6 Front Wheel Drive Base Multiple Power</b> Price Includes: Front Wheel Drive Base Set Up for Multiple Power Options, Independent Articulating, Suspension, Charger, and Standard Positioning Belt. <u>Must Choose:</u> _____ Rehab Seat or _____ MPS Back w/ Solid Seat Pan _____ MPS Seat and Back Cushion	\$11,150.00	E2377 K0862

**FRAME COLOR** select one

Part Number	Description	Price	HCPCS Code
_____ 4624BK	Black	N/C	
_____ 4624RD	Red	N/C	
_____ 4624AG	Mossy Green	N/C	
_____ 4624BL	Royal Blue Custom color	\$270.00	
_____ 4624Y	Yellow Custom color	\$270.00	

**BATTERIES**

Part Number	Description	Price	HCPCS Code
_____ BAT34	Group 34 Sealed 60 Ah Gel Battery - 43 lbs each installed -two required	\$355.00	E2359
_____ BAT	Group 24 Sealed LA/AGM Battery - 52 lbs each installed - two required	\$355.00	E2363
_____ BAT-G	Group 24 Sealed Gel Battery - 52 lbs each installed - two required	\$415.00	E2363
_____ BCHD	Battery Charger	N/C	E2367

**TIRES**

Part Number	Description	Price	HCPCS Code
<b>Castors</b>			
_____ WH250BP	Pneumatic - two non-marking castors _____ black _____ grey	N/C	
_____ WH250BS	Foam Filled - two required - non-marking flat-free castor (each) _____ black _____ grey	\$60.00	
<b>Drive Tires</b>			
_____ WH14BP	14"x3" Indoor Hybrid Tire Pneumatic _____ black _____ grey	N/C	
_____ WH14BS	14"x3" Indoor Hybrid Tire Solid _____ black _____ grey	\$65.00	
<b>Anti Tips</b>			
_____ 1226	Anti Tips (pair) - required	\$475.00	Page 2/9

**SPARE TIRES**

Part Number	Description	Price	HCPCS Code
<b><u>Spare Drive Tires (each)</u></b>			
WH14BP	14"x3" Indoor Hybrid Tire Pneumatic _____ black _____ grey	\$265.00	E2381
WH14BS	14"x3" Indoor Hybrid Tire Solid _____ black _____ grey	\$325.00	E2390
WH145BPB	145/70-6 All Terrain Tire Complete with Black Powder Coated Rim	\$300.00	A9270
4586	145/70-6 Complete tire with Tire Liner	\$490.00	A9270
TS1	Tire Sealant - pneumatic drive tires only	\$15.00	A9270
1595	Jack - power wheelchair tire jack	\$160.00	A9270
<b><u>Spare Castors</u></b>			
WH250BP	Pneumatic Castor - non-marking castor _____ black _____ grey	\$115.00	E2384
WH250BS	Foam Filled Castor - non-marking flat free castor _____ black _____ grey	\$160.00	E2387

**SEATING SYSTEM**

Part Number	Description	Price	HCPCS Code
Seating Systems below include: Either Multi-Position Seat (MPS) Seat Back or Rehab Back Canes with a MPS seat cushion (MPS seat only available with MPS back) or a solid rehab seat pan.			
4967	No Power Frame - with MPS or Rehab back and seating - 400 lb. Capacity	\$5,140.00	K0108
4959	50° Power Tilt in Space - 400 lb. Capacity*	\$6,050.00	E1002
3932	135° Integrated Shear Reduction(ISR) - Power Redline for Rehab Seating System - 400 lb. Capacity*	\$5,705.00	E1004
1337	135° Power Recline - MPS Seating System - 400 Lb. Capacity*	\$4,305.00	E1003
4989	Variable Seat Height - 12" Seat Elevator for transfer assist - 340 lb. Capacity*	\$5,270.00	E2300
3500	50° Tilt & 135° Integrated Shear Reduction - for Rehab Seating System - 400 lb. Capacity*	\$10,995.00	E1007
3600	50° Tilt & 135° Power Recline - for MPS Seating System - 400 lb. Capacity*	\$9,555.00	E1006
<b><u>Reduced Drive Capability</u></b> (Option allows for driving capability at 20% speed while elevated and/or tilted)			
RDC	50° Power TIS RDC - Reduced Drive Speed while tilted	\$650.00	A9270
RDC	12" Variable Seat Height RDC - Reduced Drive Speed while elevated	\$650.00	A9270
*Must be ordered with SFCK or MFCK depending on number of options selected			

**POWER SEAT OPTIONS**

Part Number	Description	Price	HCPCS Code
SFCK	<b><u>Single Seat Function Control Kit</u></b> For operation of a single seat function through the wheelchair electronics via the drive controls and/or push button.	\$1,400.00	E2310
FTJ	Function Through Joystick	N/C	
CRTL5-P	External 5 Button Box - placed between armpad & joystick -for direct access to power seat functions	\$750.00	
3634JS	8 Way Toggle - placed beside joystick - for direct access to power seat functions - requires PG-JSMD	\$860.00	
MFCK	<b><u>Multiple Seat Function Control Kit</u></b> MUST be selected if ordering two or more seat functions. This device is used to operate two or more seat functions.	\$2,850.00	E2311
FTJ	Function Through Joystick	N/C	
CRTL5-P	External 5 Button Box - placed between armpad & joystick -for direct access to power seat functions	\$750.00	
3634JS	8 Way Toggle - placed beside joystick - for direct access to power seat functions - requires PG-JSMD	\$860.00	

**Additional Actuator Functions**

Part Number	Description	Price	HCPCS Code
_____ 3801	Retractable Docking Pin*	\$3,000.00	A9270

\*Must be ordered with SFCK or MFCK depending on number of options selected

**Approximate Seat-to-Floor Height** select one \_\_\_\_\_ 17" \_\_\_\_\_ 18" \_\_\_\_\_ 19" N/C

**SEAT SIZES (width x depth)** select one

Part Number	Description	Price	HCPCS Code
<b><u>MPS Seat Sizes (width x depth)</u></b>			
_____ 1673	16" x 16" Vinyl MPS	N/C	E2605
_____ 1674	16" x 18" Vinyl MPS	N/C	E2605
_____ 1675	18" x 16" Vinyl MPS	N/C	E2605
_____ 1676	18" x 18" Vinyl MPS	N/C	E2605
_____ 1678	18" x 20" Vinyl MPS	N/C	E2605
_____ 1679	20" x 18" Vinyl MPS	N/C	E2605
_____ 1680	20" x 20" Vinyl MPS	N/C	E2605
_____ 1681	22" x 18" Vinyl MPS	\$365.00	E2606
_____ 1682	22" x 20" Vinyl MPS	\$365.00	E2606

**Rehab or Flat Pan Seat Sizes (width x depth)**

Adjustable in width & depth for most sizes

_____ 2792STD	Seat Width x Depth	W: _____ (13"-21")	D: _____ (13"-21")	N/C	K0108
_____ 2792DP	Seat Width x Depth	W: _____ (22"-23")	D: _____ (13"-21")	\$365.00	K0108

**SEATBACK OPTIONS** select one

Part Number	Description	Price	HCPCS Code
<b><u>MPS Options</u></b> - MPS comes with manual recline			
<b>Breathable Cloth MPS Backrest</b>			
_____ 1360	Standard Height MPS Back - 16"-20" Wide & 22" Tall	N/C	E2620
_____ 1520	Extra Tall MPS Back - 16"-20" Wide & 26" Tall	\$440.00	E2620
_____ 1361	Standard Height & Wide MPS Back - 22"-23" Wide & 22" Tall	\$265.00	E2621
_____ 4598	Extra Tall & Wide MPS Back - 22"-23" Wide & 26" Tall	\$525.00	E2621
<b>Wipeable Vinyl MPS Backrest</b>			
_____ 1360VI	Vinyl Standard Height MPS Back - 16"-20" Wide & 22" Tall	\$240.00	E2620
_____ 1520VI	Vinyl Extra Tall MPS Back - 16"-20" Wide & 26" Tall	\$630.00	E2620
_____ 1361VI	Vinyl Standard Height & Wide MPS Back - 22"-23" Wide & 22" Tall	\$320.00	E2621
_____ 4598VI	Vinyl Extra Tall & Wide MPS Back - 22"-23" Wide & 26" Tall	\$745.00	E2621

**Rehab Back Cane Options** - width 13"-22" & depth 13"-21" & height 24" with 7/8" tubing

_____ 3920	Standard Rehab Back Canes	N/C	A9270
_____ 3922	Quick Release Flip Forward Rehab Back Canes - for small vehicle transport	\$955.00	A9270
_____ 1560	Manual Recline Rehab Back Canes	\$855.00	A9270

**Seatback Accessories for MPS Back**

_____ 4784	1 Piece Push Handle - needed for O2 holder, backpack, cane holder	\$125.00	A9270
_____ 2533	Accessory Mount - MPS seatback needed for aftermarket headrest, attendant control	\$95.00	A9270

**REHAB SEATING OPTIONS**

Part Number	Description	Price	HCPCS Code
<b>Comfort Company - Backrest &amp; Cushion</b>			
_____ CU-FN	Curve Cushion - Molded foam w/ medial & lateral thigh supports - size: _____ W x _____ D	\$180.00	E2601
_____ 46G	Elements Cushion - Single layer foam with quadra gel pack - size: _____ W x _____ D	\$180.00	E2601
_____ M2-F	M2 Cushion - Quadra gel with pelvic, lateral, & medial thigh supports - size: _____ W x _____ D	\$375.00	E2607
_____ BK-M	Acta Back - moldable center section and high resiliency wings _____ 12" _____ 14" _____ 16" _____ 18" _____ 20" _____ 22"	\$770.00	E2613
_____ BK-R	Radius Back - high resiliency foam _____ 12" _____ 14" _____ 16" _____ 18" _____ 20" _____ 22"	\$755.00	E2611
_____ BK-V	Visco Back - high resiliency foam _____ 12" _____ 14" _____ 16" _____ 18" _____ 20" _____ 22"	\$690.00	E2611

**HEADREST OPTIONS**

Part Number	Description	Price	HCPCS Code
_____ 2770	MPS Cloth Headrest - 12"x4.5"x6.25" - MPS seat back only	\$325.00	E0955
_____ 2770VI	MPS Vinyl Headrest - 12"x4.5"x6.25" - MPS seat back only	\$325.00	E0955
_____ HD-MF	Moldable Headrest Pad - 10"x6" - requires HD-BH & 2533	\$255.00	E0955
_____ HD-BH	Removable Multi-Axis Headrest Hardware - depth adj .5" behind backrest and 7" forward	\$275.00	E1028

**ARMREST STYLE OPTIONS**

Part Number	Description	Price	HCPCS Code
_____ 3796	Standard Removable Armrest - post style - attaches to the base-height adj 2"	N/C	K0020
_____ FUA	Flip-Up Armrest - post style - attaches to the base-height adj 3" & angle adj 90° - 155°	\$675.00	A9270
_____ PP0031	Reclining Flip Up - attaches to the base & seat back-height adj 4" & angle adj 90° - 105°	\$785.00	A9270
_____ 3071	Reclining Cantilever - Flip Back Articulating - attaches to the seat back-height adj 4" & angle adj 90°-75°	\$1,500.00	A9270
_____ 3331	Quick Release Post for Cantilever Arms - attaches to armrest and base (pair)	\$610.00	A9270

**ARMREST PAD OPTIONS**

Part Number	Description	Price	HCPCS Code
_____ AP3	3"x12" Desk Length Oval (pair)	N/C	K0019
_____ AP4	4"x16" Tapered Oval (pair)	\$85.00	K0019
_____ 1381 (LEFT)	Trough Style Armrest- 6" x 14" w/o hand rest, or 17", 22" w/ hand rest (each) _____ 14" _____ 17" _____ 22"	\$205.00	E2209
_____ 1380 (RIGHT)	Trough Style Armrest- 6" x 14" w/o hand rest, or 17", 22" w/ hand rest (each) _____ 14" _____ 17" _____ 22"	\$205.00	E2209
_____ AP75	Magic Mobility Arm Pad - 3"x12" leatherette rounded edges (each)	\$115.00	K0019
_____ AP7550	Magic Mobility Arm Pad - 3"x14" leatherette rounded edges (each)	\$120.00	K0019
_____ Custom	Custom Arm Pads: _____ _____	RQ	

**LATERAL SUPPORT OPTIONS**

Part Number	Description	Price	HCPCS Code
<b><u>MPS Seating</u></b>			
LT1-SA	Comfort Company Single Swing Away Lateral Hardware (each) _____ Right _____ Left	\$275.00	E0956
LT1-L/RS4W4T	Comfort Company Single Lateral Pad (each) _____ Right _____ Left	\$65.00	E0956
<b><u>Rehab Seating</u></b>			
LT1-SA	Comfort Company Single Swing away Lateral Hardware (each) _____ Right _____ Left	\$275.00	E0956
LT1-RGD	Comfort Company Single Rigid Lateral Hardware (each) _____ Right _____ Left	\$260.00	E0956
LT1-RS4W4T	Comfort Company Single Lateral Pad Rigid - 5" W x 4" T	\$65.00	E0956
	Stretch-Air Cover (each) _____ Right _____ Left		

**POSITIONING OPTIONS**

Part Number	Description	Price	HCPCS Code
<b><u>Positioning Hardware</u></b>			
30094	Flip Down Hip Guide Hardware - fixed to base near the back (each)	\$270.00	E0953
34397	Removable Hip Guide Hardware - fixed to the base near the back - flat pan only (each)	\$220.00	E0953
PP2010	Removable Knee Adductors Hardware - fixed to the base near the front (each)	\$220.00	E0953
30094	Flip Down Knee Adductors - fixed to the base near the front (each)	\$270.00	E0953
<b><u>Positioning Pad</u></b>			
50491	4" x 6" Pad (each)	\$165.00	E0956
50246	4" x 10" Pad (each) requires 34397 or PP2010	\$165.00	E0956
50049	Adductor Cover With Gel Insert - 4"x6" (pair) requires 50491	\$240.00	A9270

**CHEST HARNESS OPTIONS**

Part Number	Description	Price	HCPCS Code
SH103M	Chest Strap Bodypoint Monoflex, - 4"x49.5"	\$135.00	E0960
PBH	Padded Butterfly Positioning Chest Strap - 7" at Chest	\$155.00	E0960
SH331L-B1	Bodypoint Stayflex, Butterfly, Narrow Front-Pull large w/o zipper - 3.5" at Chest	\$210.00	E0960

**SEAT RESTRAINT OPTIONS select one**

Part Number	Description	Price	HCPCS Code
1608	Push Button Style Seat Positioning Strap - 2"x64"	N/C	E0978
1608XL	Push Button Style Seat Positioning Strap - 2"x80"	\$50.00	E0978
ABSB	Airline Buckle Seat Positioning Strap - 2"x80"	\$130.00	E0978
EB205L-B1	Bodypoint Evoflex Pelvic Stabilizer large - sitting hip width 14"-18" requires HW312-KIT	\$95.00	E0978
HW312-KIT	Mounting Bracket Kit - Evoflex pelvic stabilizer	\$70.00	E1028
WC19SB6K	WC 19 Transit Kit - approved according to ANSI/RESNA WC19 - includes lap belt 2"x32"	\$835.00	K0108
WC19SB7K	WC 19 Transit Kit - approved according to ANSI/RESNA WC19 - includes lap belt 2"x44"	\$835.00	K0108

**LEGREST OPTIONS**

Part Number	Description	Price	HCPCS Code
<b><u>No Power Legrests &amp; Footplate Options</u></b>			
1347	Center mount w/one piece fixed Footplate 10"x13", 10" height adj	N/C	K0040
4055	Center mount flip Footplate, height adj _____ 1 piece _____ 2 piece	\$360.00	K0040
1371	Side mount removable leg cane w/two piece flip-up Footplate 8.5"x6", 13" height adj	\$300.00	K0040
AMP	Swing Away Amputee support - 10" extension (each) _____ Right _____ Left	\$410.00	E1020

<b><u>No Power Legrests Accessories</u></b>			
4168	Fixed Center Mount Calf Pads - w/breathable fabric	\$455.00	E0995
SMCP	Side Mount Calf Pads - w/breathable fabric	\$455.00	E0995
SP102M	Calf Straps (side mount only) Bodypoint Aeromesh medium - length 36" & width 3.5"	\$95.00	K0039
SP102L	Calf Straps (side mount only) Bodypoint Aeromesh large - length 40" & width 3.5"	\$110.00	K0039
4597	Heel & Side Support - Attaches to the footplate stem and footplate	\$520.00	E0951
SR230	Foot Strap - 1.5" wide strap	\$70.00	E0952

<b><u>Power Legrests, Calf Pad &amp; Footplate Options</u></b>			
4755	Center Mount Power Elevating Articulating Legrest* - 1 pc footplate 11"x11.5"	\$3,300.00	E1012
2232	Center Mount Power Elevating Articulating Legrest* - 2 pc footplate 5"x10.5"	\$3,200.00	E1012
22578R	Standard Two Piece Footplate with 2" Metal Heel Guard - 5"x10.5" - may not fit with all seat sizes - requires 2232	\$680.00	K0042
PP0109	Extra Large Two Piece Footplate - may not fit with all seat sizes - 5.5"x11.5" - requires 2232	\$605.00	K0041
PP0117	Extra Large Two Piece Footplate with 2" Metal Heel Guard - requires 2232	\$815.00	K0041
3526	Side Mount Power Elevating Legrest* - Swing away legrest w/Flip up 2" height adj footplate _____ Independent _____ Combined	\$3,600.00	E1010

\*Must be ordered with upgraded electronics SFCK or MFCK depending on number of options selected

<b><u>Power Legrests Accessories</u></b>			
2219	CMPE Calf Pad Extension (pair) - requires 2232 or 4755, CPCOVL	\$95.00	A9270
CPCOVL	CMPE Calf Pad Extension Cover - requires 2232 or 4755	\$155.00	A9270
827A	Foot Straps - 11"-14" (pair) - requires 2232 or 3526	\$70.00	E0952
HL	Heel Loops - Attaches to the footplate - length 11.5"-13" & width 1" - requires 2232 or 3526	\$100.00	E0951

**ELECTRONICS Penny & Giles**

Part Number	Description	Price	HCPCS Code
<b>Expandable Joystick</b> - requires PG-PM90, PG-SL			
PG-JSMLEDL	Standard R-Net Joystick Module - No LCD display or mono jacks	N/C	E2377
PG-JSMD	Color LCD Joystick Display - with mono jack ports for external switches	\$315.00	E2377
PG-JSMIR	Infra-Red Color LCD Joystick - with mono jack ports for external switches and IR	\$395.00	E2377
PG-JSMIRBT	Infra-Red Color LCD Joystick Module - with mono jack ports for external switches and Bluetooth	\$470.00	E2377

**Expandable Power Module**

PG-PM90	R-Net Expandable Controller	\$650.00	E2377
PG-SL	R-Net Harness for Expandable Controller	\$455.00	E2313

**Joystick Handle Type**

RJK	Cone-Shaped - standard finger control	N/C	E2323
PC102A	Bodypoint U Shaped w/Flex Shaft _____ 3" _____ 4"	\$150.00	E2323
PC108BS	Bodypoint Grooved Mushroom Handle	\$140.00	E2323

**Joystick Mount**

3069R	Standard Fixed - Depth Adj 8.25" Right Mount	N/C	
3069L	Standard Fixed - Depth Adj 8.25" Left Mount	N/C	
4607	Swing Away Joystick - Swings to the Right	\$500.00	E1028
4608	Swing Away Joystick - Swings to the Left	\$500.00	E1028
MM	Stealth Midline Mount -2 position mount - Rotation 0° - 180° _____ Right _____ Left	\$1,040.00	E1028

**Joystick Accessories**

2529	Attendant Control Joystick - requires 2533	\$1,145.00	E2331
TBB	Tash Buddy Button - Diameter 2.5" & Height .7" Outer edge force 3.4oz. Center force 7oz.	\$155.00	K0108
ESBLK	Egg Switch - single function push button that can scroll through modes or profiles - requires CPS9	\$130.00	
CPS9	Swing Away Egg Switch Hardware - Stealth	\$400.00	
JSLK	Joystick Lock - electronically locks chair from driving	\$185.00	
RVAL	Reverse Alarm - beeps when backing up	\$185.00	

**ALTERNATIVE DRIVE CONTROLS**

Part Number	Description	Price	HCPCS Code
<b>Alternative Drive Systems</b>			
IDH300-1	Stealth i-Drive Head Array requires F8675 & TWB480-17S	\$7,955.00	E2330
F8675	Stealth Mounting Bracket and Egg Switch	\$380.00	
TWB480-17S	Stealth Headrest Hardware	\$350.00	E1028
HDR-4M-S-C	Switch-It Head Array - Standard three switch head array	\$5,300.00	E2327
3335	Chin Control - w/bib mount and adapter	\$2,530.00	E2373
SNP	Sip and Puff	\$1,475.00	E2325
PG-OMNI	Omni Display - 4" Color Display For Alternative Drive Systems requires ARMS260	\$1,535.00	
ARMS260	Omni adjustable swing away hardware - Stealth _____ Right _____ Left	\$350.00	E1028



**ACCESSORIES**

Part Number	Description	Price	HCPCS Code
1605	Waterproof Wheelchair Cover	\$130.00	A9270
1606	Waterproof Joystick Cover	\$40.00	A9270
1603	Medical Necessity Bag - Velcros to armrest - 10.5"x6"x1.25"	\$30.00	A9270
1604	Deluxe Backpack - 13.5"x15"x4" requires 2530	\$85.00	A9270
PP0052	Cup Holder - Attaches to the armrest opposite joystick - self leveling	\$140.00	A9270
A02H	Articulating Oxygen Holder - requires 2530	\$835.00	E2208
PP0035	Cane Holder - Heavy Duty requires 2530 - May not work w/some options	\$405.00	E2207
3197	Luggage Rack - Attaches to base behind the chair 10.5"x13"	\$315.00	A9270
2855	Lighting Kit Mounted on Seat- 2 headlights, 2 red marker lights w/turn signals attaches to the base	\$1,050.00	A9270
PP0029	Mud Guards - All Terrain DRIVE TIRES only - (pair) requires WH145BPB	\$340.00	A9270
PP0036	Lift Brackets- Used with 4-point boom lift	N/C	A9270
4705	Charge Mate - 12 Volt/Car outlet and USB port/cell phone charger, with a max draw of 6 amps	\$475.00	A9270
PP0133	Cell Phone Holder - Adj. to fit most cell phones      Size_____	\$260.00	A9270
WCR630	6' Multifolding Ramp - with traction tape	\$605.00	A9270
RAM117BU	Fishing Rod Holder	\$260.00	A9270

**Be Adaptive Products**

LM100	Limited Mobility Shooting Mount- gun or crossbow	\$1,325.00	A9270
TM100	Trigger Mechanism	\$735.00	A9270
FM200	Limited Mobility Fishing Mount	\$1,325.00	A9270
	For More Options Go to <a href="http://www.beadaptive.com">www.beadaptive.com</a>		
DDT	Hand Held Programmer	\$1,430.00	A9270
LGSVC	Lift Gate Service - required for facilities without a loading dock	\$105.00*	

\*Discounts do not apply

**See our Expanded Accessory PDF @ [mobility-usa.com](http://mobility-usa.com)**

**NOTES:**

---



---



---



---



---



---



---



---



---



---

Note: All specification and prices are subject to change without notice. Prices listed are only valid if ordering with a wheelchair. The HCPCS codes provided are not intended to be billing or legal advice, rather Innovation In Motion's interpretation of the code definitions. Use of the codes provided does not ensure coverage or payment for the item. For coverage information, verify the policy of the appropriate payer. It is recommended to contact Innovation In Motion with any questions regarding proper ordering of the chair at 1-260-665-2769.