

Mouse Anti-ER [1D5]: MC0335, MC335RTU7

Intended Use: For Research Use Only

Description: Estrogen Receptor Alpha (ER or ER Alpha) is a nuclear protein and member of the steroid hormone receptor family. ER alpha possesses both DNA binding and ligand binding domains, and exerts a significant role in activating the transcription of certain genes. Ligand-dependent dimerization and phosphorylation both function to regulate the transcriptional activation of ER alpha.

Specifications

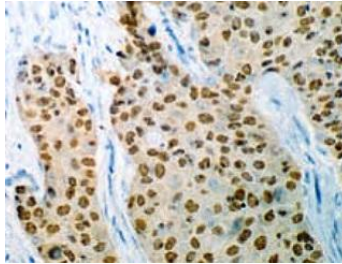
Clone: 1D5
Source: Mouse
Reactivity: Human
Isotype: IgG1
Localization: Nucleus
Formulation: Antibody in PBS pH7.4, containing BSA and $\leq 0.09\%$ sodium azide (NaN₃)
Storage: Store at 2°- 8°C
Applications: IHC
Package:

Description	Catalog No.	Size
ER Concentrated	MC0335	1 ml
ER Prediluted	MC0335RTU7	7 ml

IHC Procedure*

Positive Control Tissue: Breast cancer
Concentrated Dilution: 50-200
Pretreatment: Citrate pH6.0 or EDTA pH8.0, 15 minutes using Pressure Cooker, or 30-60 minutes using water bath at 95°-99°C
Incubation Time and Temp: 30-60 minutes @ RT
Detection: Refer to the detection system manual

* Result should be confirmed by an established diagnostic procedure.



FFPE human invasive ductal carcinoma stained with anti-ER using DAB

References:

1. Markers of progression and invasion in short term follow up of untreated breast cancer patients. Rabi ZA, et al. Cancer Biomark. 15(6):745-54, 2015.
2. Prognostic implications of estrogen receptor 1 and vascular endothelial growth factor A expression in primary gallbladder carcinoma. Zhang LQ, et al. World J Gastroenterol. Jan 28;21(4):1243-50, 2015.
3. Quantitative immunohistochemical analysis reveals association between sodium iodide symporter and estrogen receptor expression in breast cancer. Chatterjee S, et al. PLoS One. 8(1):e54055, 2013.
4. BCL-2 Expression in Breast Carcinomas in Postmenopausal Women. Alis Dema1, et al. Timisoara Medical Journal. Number 3-4, 2008.