

TIAHUANACO STAR GATES 6

This illustration of Puma Punku attempts to approximate the measurements of the complex using GoogleEarth coordinates. There have been detailed measurements already but this will give an idea of the angle and scope of the site. What is amazing about Puma Punku is that the style of the block workmanship is almost identical to those used to build the pyramids in Mexico and Egypt. This study suggests that the Puma Punku pyramid complex is a celestial correlation to the constellation Orion. Precisely the site corresponds to the star Saiph. It appears that the complex has about a 3 degree inclination from North. Tiahuanaco pre-Inca civilization had a motif that is prevalent in its architecture and artwork; it is considered the Inca Cross. As this complex venerated Orion, it would not be a surprise as Orion's shield or symbol was that of a cross.

One unique element that was apparently factored into the design of this observational platform was the phi ratio. The complex is shown with the phi spiral for better reference of how the complex was delineated from the inner and outer court.

PUMA PUNKU

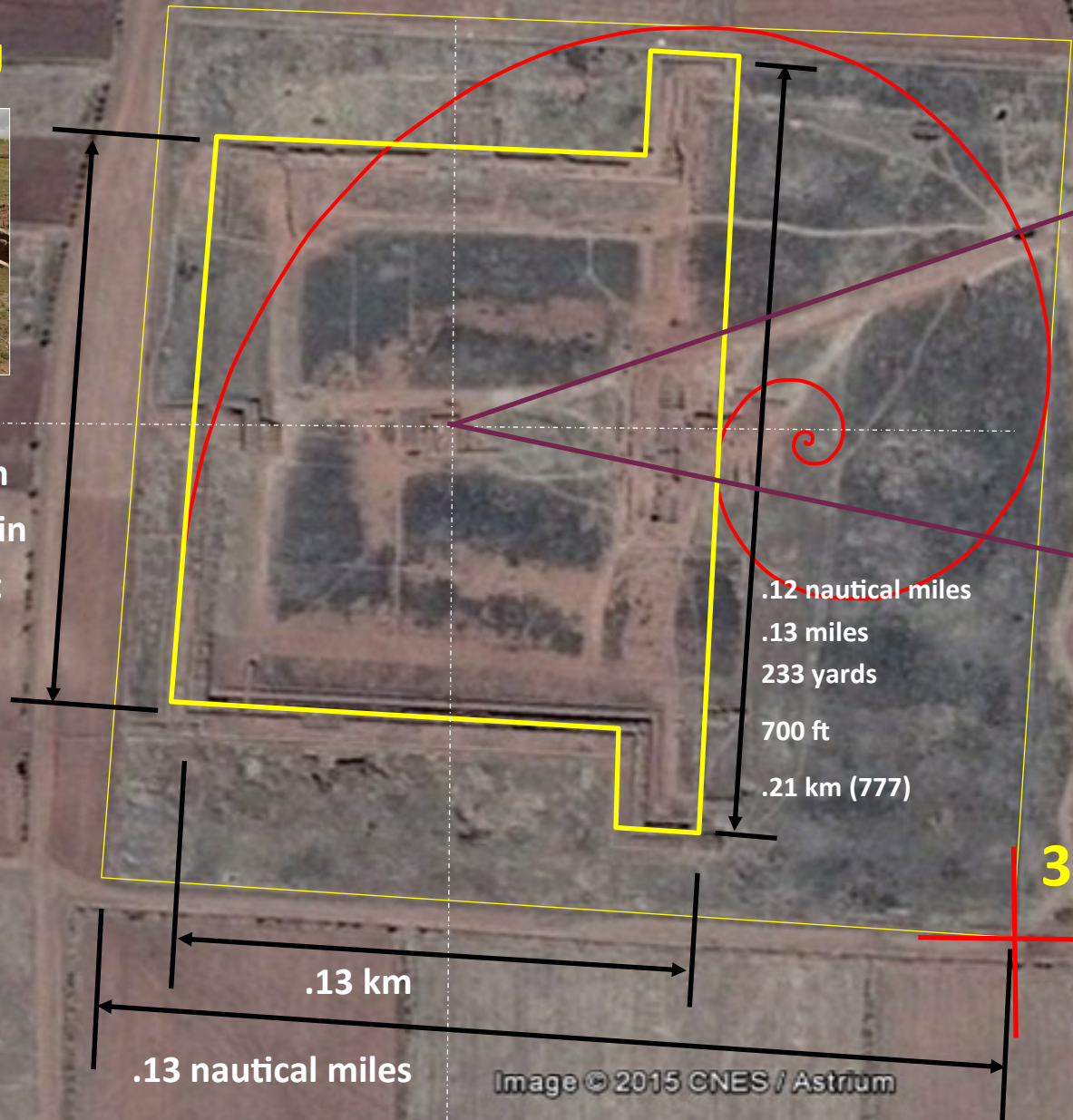


153 m
6000 in
500 ft

This site is famous for its 'H' letter building block that are multi-layered in the same block which is amazing to consider if such a society only had chisels to do it with. Some researchers believe these ancient civilizations possessed a technology at stone cutting and forming that is unknown to modern science and engineering. Perhaps it was due to some sort of layer cutting tool as the tolerances are not able to be replicated today.



Tiahuanaco Puma Punku Egypt



.12 nautical miles
.13 miles
233 yards
700 ft
.21 km (777)

.13 km

.13 nautical miles

3°

From Puma Punku to Kalasasaya

33 arcseconds
.66 miles
1 km



The Sun Gate depicts Viracocha as handling 2 snakes. This would be consistent with another celestial constellation of Ophiuchus. In essence, Ophiuchus is wrestling with Serpens but Serpens is one of the constellations so large, it is sectioned off in 2 parts with Ophiuchus in the middle.

From Puma Punku to 'Rigel' star marker

.555 smoots
.51 nautical miles

The Inca Cross is consistent with the Viracocha or that like that of Quetzalcoatl motif. The Great Teacher had the cross as the means by which he was put to death. In some depictions he even has a lance that is thrust in the side as Jesus Christ was on the cross of Calvary. How and why did the first peoples of the Americans know about such a cosmic narrative?

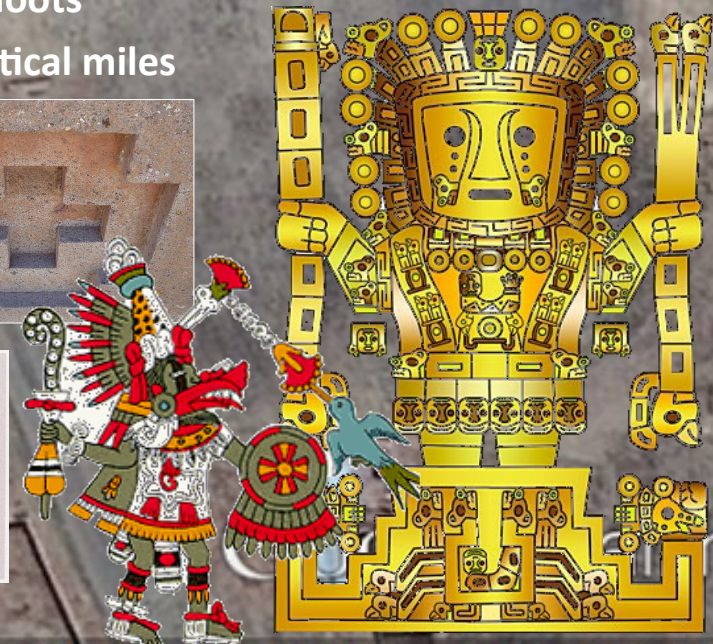


Image © 2015 CNES / Astrium

6 of 6
© Composition & Some Graphics by
LUIS B. VEGA
vegapost@hotmail.com
www.PostScripts.orr
FOR ILLUSTRATION PURPOSES ONLY

Some Sources
GoogleEarth.com
NASA.gov
Stellarium.com
Wikipedia.com