

Weekly Commodities Charts Newsletter

August 21, 2017

The Weekly Commodities Charts Newsletter provides Cornelius Luca's trade ideas, model signals, and absolute charts

© 2017 Luca Global Markets, LLC. All rights reserved. This content is provided as general information only and does not constitute investment advice or a representation that any investment, security or other product is suitable for any person. This content reflects the opinions only of the author and cannot be interpreted as advice.

This content is the intellectual property of Cornelius Luca. Any copying, distribution or redistribution of this content is expressly prohibited without the prior written consent of Cornelius Luca.

Cornelius Luca shall not be liable for any errors in the content, or for any actions taken in reliance thereon.

Trade Ideas

- Energy: Long crude oil *while above* the Ichimoku cloud
- Metals: Long gold *while above* the 5-day exponential moving average
- Softs: Short coffee *while below* the 5-day exponential moving average

Commodities Models – Daily & Weekly

	<i>Commodity</i>	<i>Daily Model</i>	since	Daily Bias (> or < 21-day EMA)	Daily Risk	<i>Weekly Model</i>	since	Weekly Bias (> or < 21-week EMA)	Weekly Risk
Energy	Crude Oil	L	17-Aug	slightly bearish	slightly bullish	S	7-Aug	sideways	neutral
	Brent Crude	L	17-Aug	slightly bullish	slightly bullish	S	21-Aug	slightly bullish	slightly bearish
	Natural Gas	S	18-Aug	sideways	neutral	S	17-Aug	slightly bearish	slightly bearish
Metals	Gold	L	21-Aug	bullish	bullish	L	8-Aug	slightly bullish	slightly bullish
	Silver	L	21-Aug	slightly bullish	slightly bullish	L	8-Aug	slightly bullish	slightly bullish
	Copper	L	16-Aug	bullish	bullish	L	14-Jul	bullish	slightly bullish
Softs	Coffee	S	14-Aug	bearish	bearish	S	14-Aug	slightly bearish	slightly bearish
	Soy Meal	S	21-Aug	bearish	slightly bearish	S	24-Jul	slightly bearish	slightly bearish
	Wheat	S	10-Aug	bearish	slightly bearish	S	24-Jul	slightly bearish	slightly bearish
	Corn	S	21-Aug	bearish	slightly bearish	S	28-Jul	slightly bearish	slightly bearish

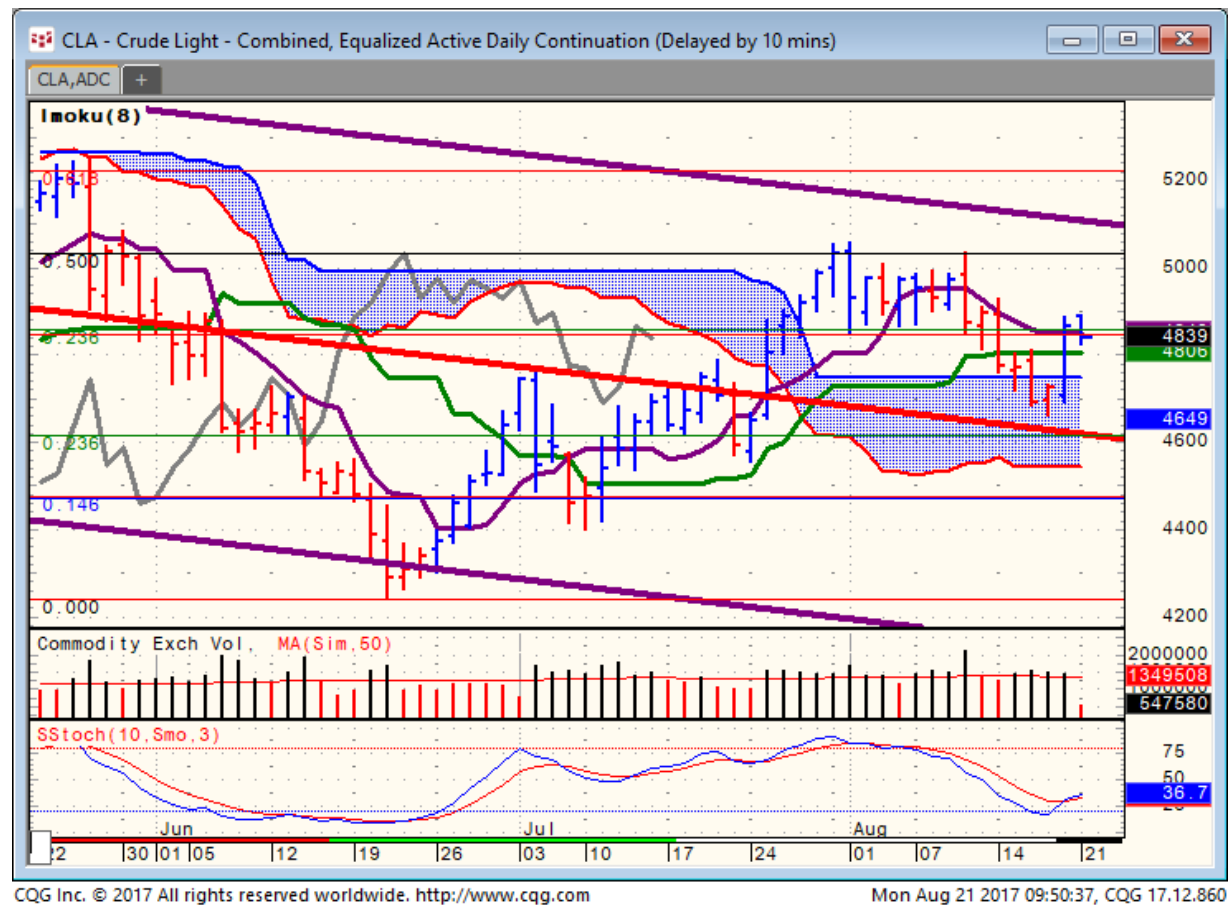
Source: Proprietary Luca Global Markets, LLC Model

Commodities Energy Trade Idea

Comment:

Long crude oil *while above the Ichimoku Cloud*

- Crude oil dipped briefly into the Cloud support and then bounced on Friday
- It trades around the 23.6% Fibonacci retracement
- Initial resistance: 49.30
- Further resistance: 50.58 & 52.43
- Initial support: 47.50
- Further support: 46.60 & 45.40 & 43.85
- Fast stochastics: slightly bullish

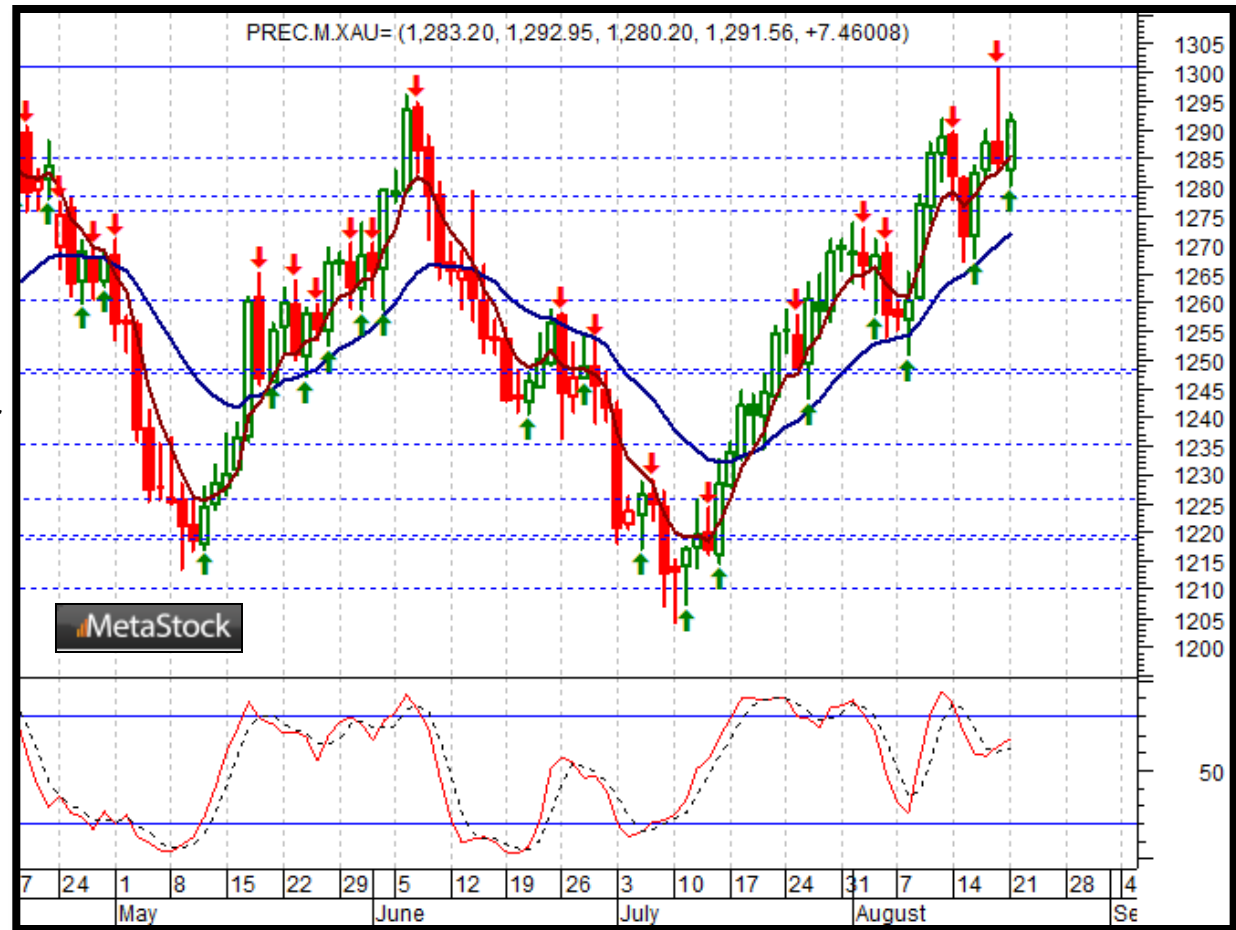


Commodities Metals Trade Idea

Comment:

Long gold *while* above the 5-day EMA

- Gold extended its gains to a 9 ½ -month high
- Gold is overbought
- A break below its 5-day EMA should trigger another drop to the 21-day EMA
- Initial resistance: 1,301
- Further resistance: 1,315 & 1,337
- Immediate support: 1,272
- Further support: 1,264 & 1,251 & 1,226
- Fast stochastics: slightly bullish

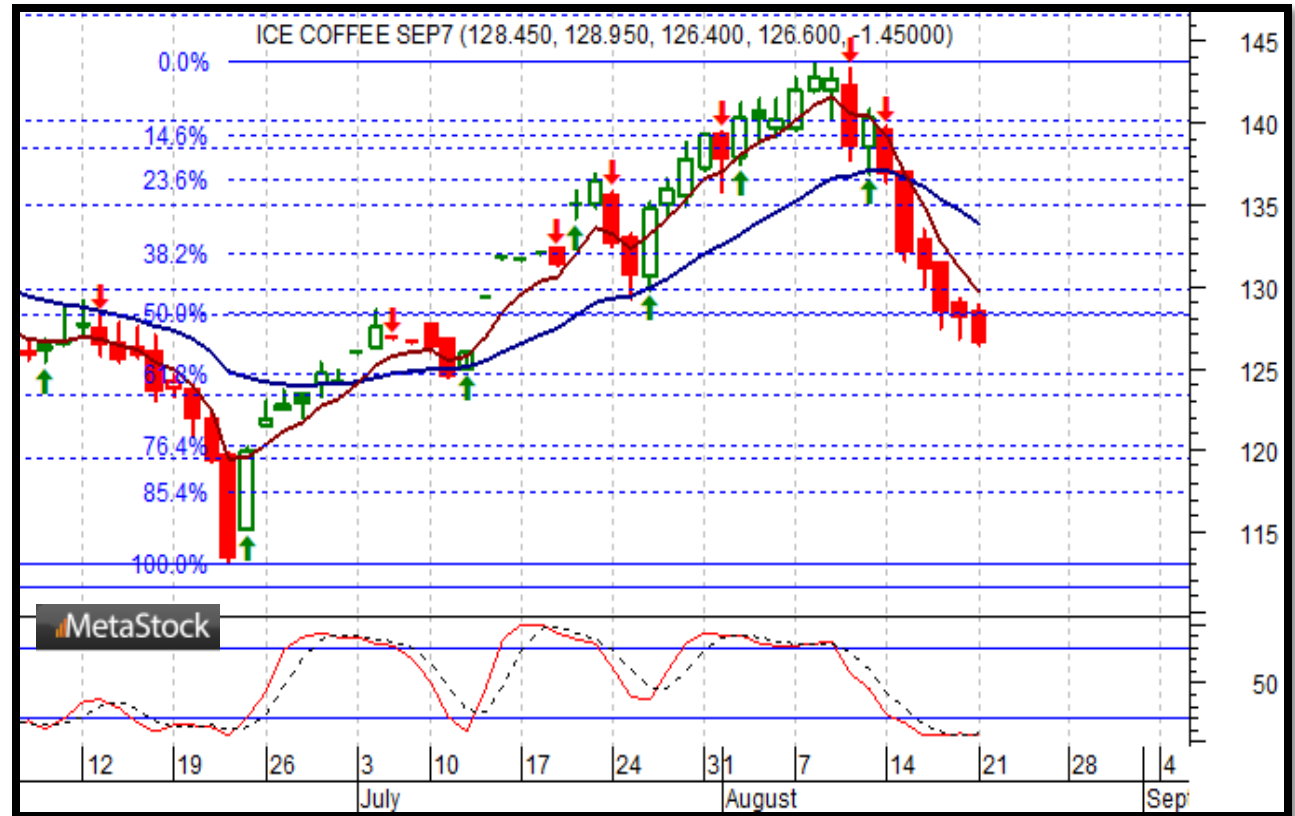


Soft Commodities Trade Idea

Comment:

Short coffee while below the 5-day EMA

- Coffee extended its losses to a 5-week low
- It trades well below its 5-day & 21-day EMAs and is over sold
- Immediate support: 125
- Further support: 119.15 & 113
- Initial resistance: 129.85
- Further resistance: 134.10 & 143.75
- Fast stochastics: bearish



How to Use the Heat Map

Bias: If the Candle > 21-period EMA = bullish
 If the Candle < 21-period EMA = bearish
 If the Candle around 21-period EMA = sideways

Long or Short	Commodities	Since when		Risk: Bullish or Bearish Candle as of Monday am EST					
		Daily Model	since	Daily Bias (> or < 21-day EMA)	Daily Risk	Weekly Model	since	Weekly Bias (> or < 21-week EMA)	Weekly Risk
Energy	Crude (CLc1)	S	27-Apr	bullish	slightly bullish	L	23-Mar	slightly bearish	slightly bullish
	Brent (LCOc1)	L	21-Apr	slightly bullish	slightly bullish	L	6-Apr	slightly bearish	slightly bullish
	Natural gas (NGc1)	S	23-Apr	bearish	bearish	S	20-Apr	bearish	slightly bearish
	Palm oil (FCPOc1)	L	24-Apr	sideways	neutral	S	20-Apr	slightly bearish	slightly bearish
Metals	Gold (GCc1)	S	24-Apr	bearish	bearish	S	20-Mar	slightly bearish	slightly bearish
	Silver (SIc1)	S	22-Apr	bearish	bearish	S	24-Apr	bearish	bearish
	Platinum (PLc1)	S	20-Apr	bearish	bearish	S	20-Mar	bearish	slightly bullish
	Copper (HGc1)	L	24-Apr	slightly bearish	slightly bullish	S	24-Apr	slightly bearish	slightly bearish
Softs	Coffee (KCN5)	L	24-Apr	sideways	neutral	L	24-Apr	slightly bullish	slightly bullish
	Cocoa (LCCN5)	L	23-Apr	bullish	bullish	L	13-Apr	bullish	bullish
	Soy meal (SMN5)	S	24-Apr	bearish	slightly bearish	S	24-Apr	bearish	slightly bearish
	Wheat (WN5)	S	24-Apr	bearish	slightly bearish	S	24-Apr	bearish	bearish
	Corn (CN5)	S	20-Apr	bearish	bearish	S	6-Apr	bearish	bearish

Source: Proprietary Luca Global Markets, LLC Model

L = long
 S = short