

MELVIN MCCLURE

www.melvinmcclure.com

mcclure@melvinmcclure.com

1.270.331.1577

PORTFOLIO

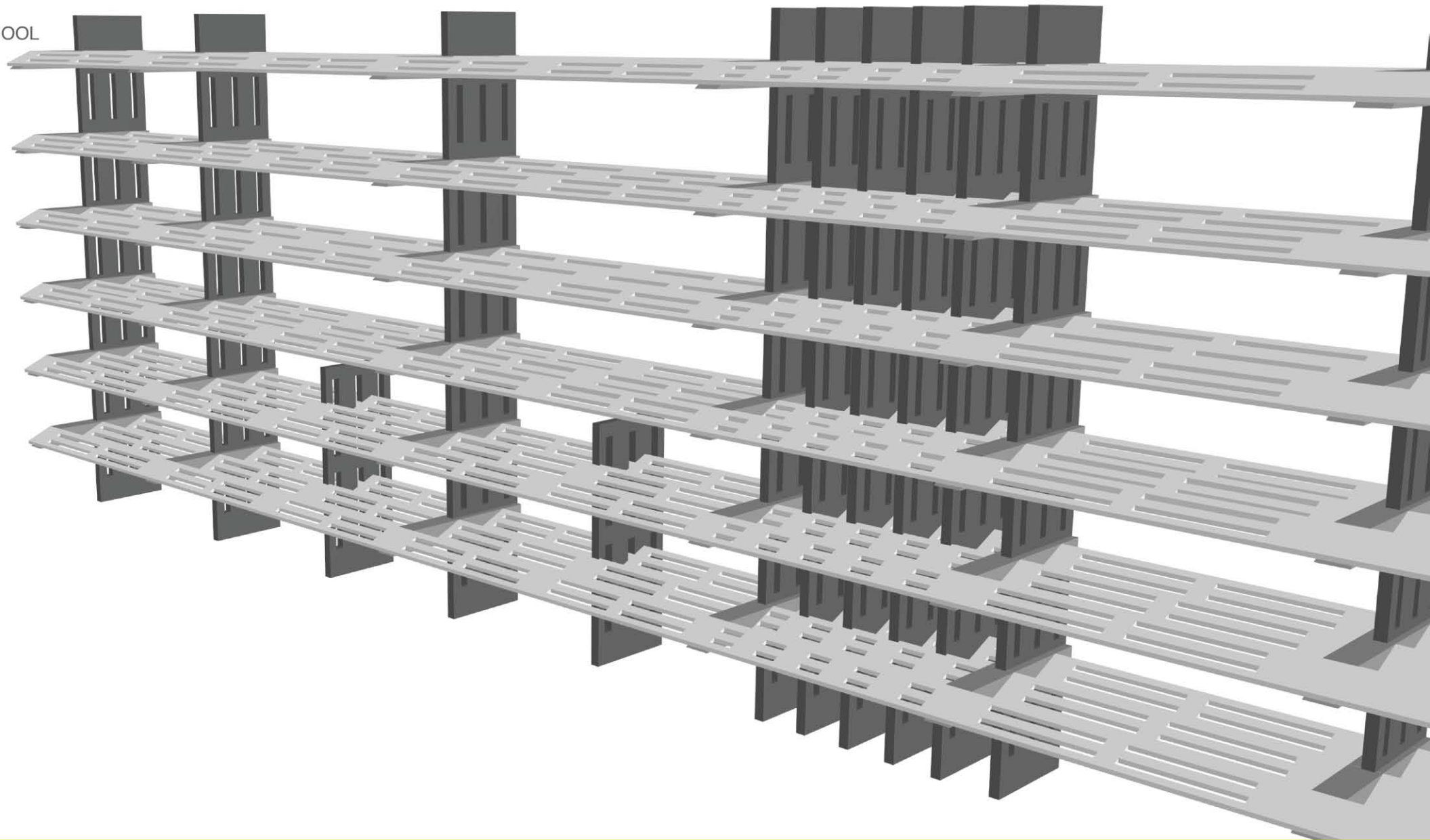


STUDIO CONCEPT HIGH SCHOOL

INTRODUCTION

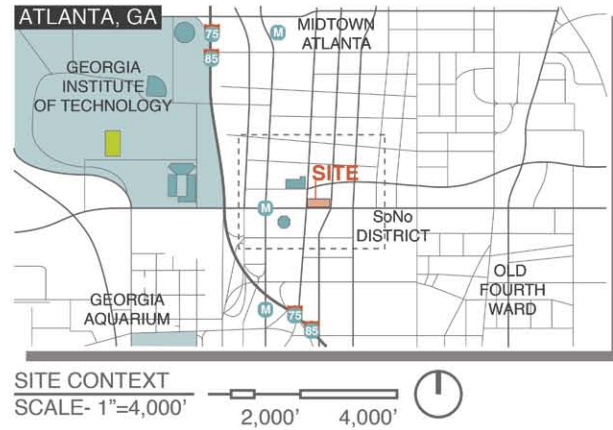
EDUCATIONAL CONCEPT

DESIGN



STUDIO CONCEPT HIGH SCHOOL

SITE:

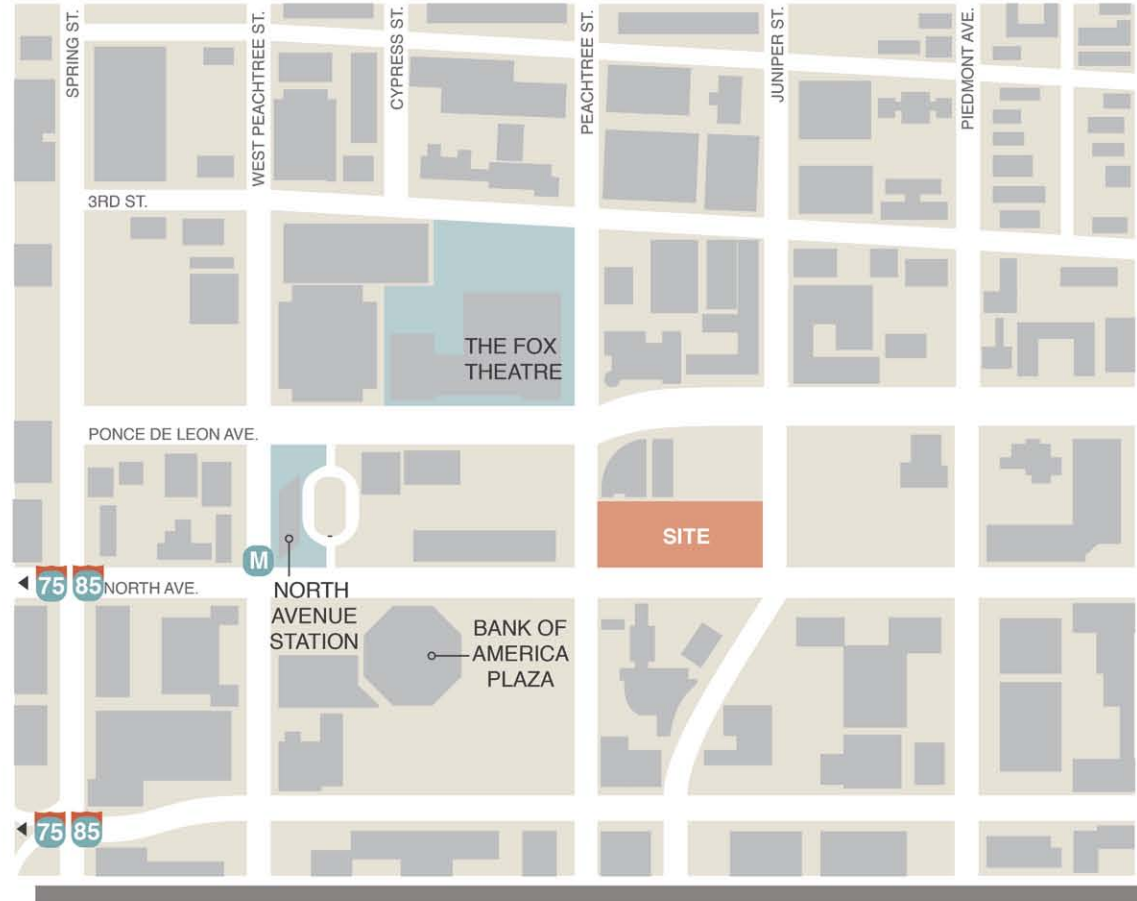


CONTEXT:

A PROMINENT INTERSECTION OF MIDTOWN ATLANTA IS OFFERED AS THE CHOSEN SITE FOR A NEW HIGH SCHOOL GEARED TOWARD HONORS AND ARTS STUDENTS. THE SITE IS SURROUNDED BY IMPORTANT LANDMARKS INCLUDING THE FOX THEATRE AND HISTORICAL STRUCTURES ALONG PONCE DE LEON AVE. AMPLE PUBLIC TRANSIT IS OFFERED IN THE VICINITY WITH THE NORTH AVENUE SUBWAY STATION AND SEVERAL BUS ROUTES. HIGH TRAFFIC VOLUME ON SURROUNDING STREETS SHOULD BE ADDRESSED WITH DEDICATED PLANNING FOR BUS DROP-OFF, VEHICULAR DROP-OFF, PEDESTRIAN ACCESS, AND SERVICES, DELIVERIES, AND LOADING.

OBJECTIVES:

A STUDIO-CENTRIC FACILITY IS BEING DESIGNED TO PROVIDE AN ATMOSPHERE SIMILAR TO THAT OF AN ART OR ARCHITECTURAL STUDIO. IN THIS REGARD, STUDENTS WILL BE ASSIGNED AN ART DESK ON WHICH ARTISTIC ASSIGNMENTS ARE PERFORMED, IN ADDITION TO TYPICAL CLASSROOMS FOR CORE CLASSES.



PROGRAM:

- // 16-20 CLASSROOMS
- // DEPENDENT ON THE NEEDS OF CHOSEN EDUCATIONAL CONCEPT.
- // GYMNASIUM
- // 2 LOCKER ROOMS
- // EQUIPMENT STORAGE
- // SEATING FOR 300 PEOPLE
- // LIBRARY
- // COMPUTER LAB
- // DINING FACILITY FOR 200
- // KITCHEN
- // SERVING STATION(S)
- // ADMINISTRATION + STAFF
- // OFFICES (4)
- // LOUNGE

MARTA STATION
RAIL LINE
PUBLIC PARK
LANDMARK



STUDIO CONCEPT HIGH SCHOOL

STUDIO-BASED EDUCATION:

CONCEPT:

- // CORE CLASSES ADMINISTERED IN TYPICAL HIGH SCHOOL CLASSROOM FACILITIES.
- // ELECTIVE CREDITS EARNED THROUGH INDIVIDUAL OR GROUP PROJECTS CHOSEN BY STUDENTS.
- // UPPER FLOORS ARE OPEN TO PROVIDE STUDIO SPACE FOR STUDENTS.
- // EACH STUDENT IS ASSIGNED A DESK SPACE TO COMPLETE PROJECTS AND ASSIGNMENTS.

OBJECTIVES:

- // PERMIT MORE ARTISTIC AND ACADEMIC FREEDOM AMONGST STUDENTS.
- // PROVIDE OPPORTUNITIES FOR STUDENTS TO TAILOR AND MOLD INDIVIDUAL EDUCATIONAL EXPERIENCE.
- // MAXIMIZATION OF STUDENT LEADERSHIP AND INTERACTION THROUGH SELF-GOVERNED PROJECTS.
- // GREATER STUDENT-TEACHER INTERACTION.

CONCEPT APPLICATION:

- // INCORPORATION OF LARGE OPEN STUDIO SPACES ALONGSIDE DIVIDED CLASSROOM SPACES.
- // DESIGN OF INSPIRING STUDIO SPACES WHICH ALLOW BOTH INDIVIDUAL WORK AND GROUP WORK; INDIVIDUAL CONCENTRATION AND COLLABORATION.
- // SPECIAL APPLICATIONS TO ALLOW INVENTIVE PRODUCTION TO OCCUR: ART DESKS; HANGING PANELS FOR CANVAS, MATERIALS, ETC; PRESENTATION SPACES.

CONCEPT PRECEDENT:

MINNESOTA NEW COUNTRY SCHOOL:

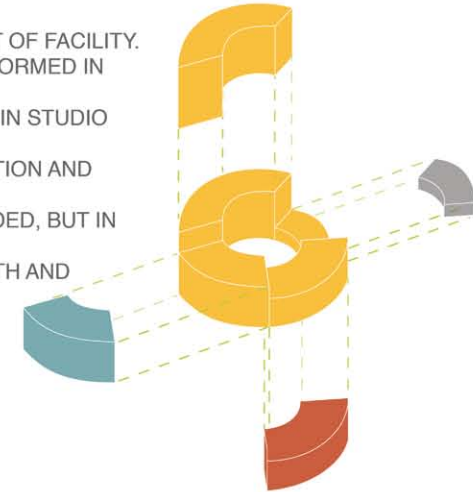
- // 8,500SF ATRIUM STUDIO IS CENTER OF FACILITY.
- // EMPHASIS ON INDEPENDENT LEARNING THROUGH INDIVIDUALIZED PROJECTS.
- // STUDENTS AND TEACHERS DEVISE INDIVIDUAL ACHIEVEMENT GOALS EACH WEEK.
- // MATH + SCIENCE TAUGHT DAILY IN CLASSROOMS; 45-MINUTES OF READING SET ASIDE EACH DAY; REMAINDER OF DAY SPENT ON PROJECT WORK.
- // NEARLY 100% COLLEGE ENROLLMENT RATE.

CONCEPT VISUALIZATION:

STUDIO-BASED CONCEPT:

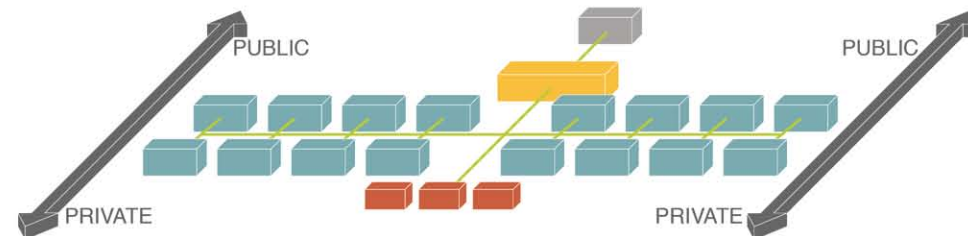
- // STUDIO SPACE SERVES AS CENTRAL POINT OF FACILITY.
- // INDIVIDUAL AND GROUP PROJECTS PERFORMED IN STUDIO SPACE.
- // NON-CORE CURRICULUM ADMINISTERED IN STUDIO SPACE.
- // MAXIMIZATION OF STUDENT COLLABORATION AND INTERACTION.
- // TRADITIONAL CLASSROOM SPACES PROVIDED, BUT IN A MORE LIMITED CAPACITY.
- // SPACES SPECIALLY FORMATTED FOR MATH AND SCIENCE PROVIDED.

- COMMUNAL SPACE
- CLASSROOM SPACE
- NON-CORE SPACE
- STAFF SPACE
- CIRCULATION



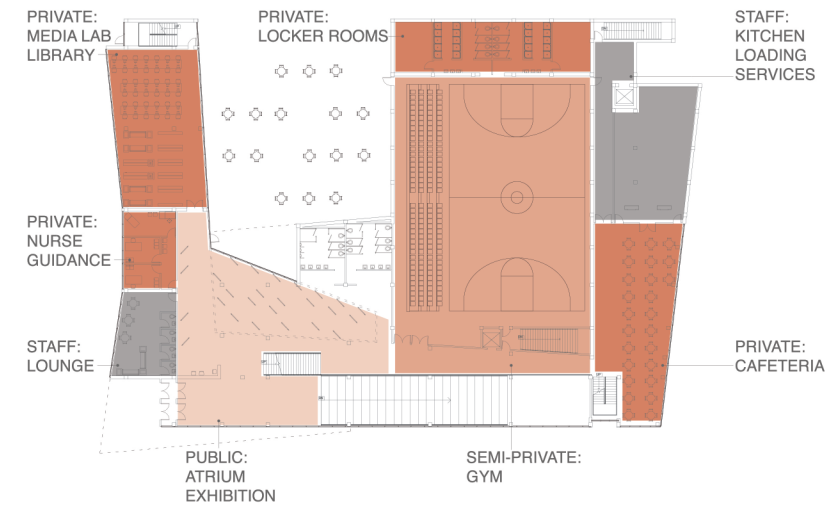
TRADITIONAL EDUCATION CONCEPT:

- // FACILITY DIVIDED INTO DISTINCT PROGRAM COMPONENTS:
- // COMMUNAL SPACES: GYMNASIUM, CAFETERIA, LIBRARY, COMPUTER LAB(S), ETC.
- // CLASSROOM SPACES: INDIVIDUAL SPACES FOR EACH CLASS, TYPICALLY ACCOMODATING AROUND 30 STUDENT DESKS.
- // NON-CORE SPACES: LIMITED SPACE AVAILABILITY FOR HOUSING OF SECONDARY CLASSES INCLUDING ART, MUSIC, WORKSHOP, ETC.
- // STAFF SPACES: OFFICES, RECEPTION, SECURITY, ETC.

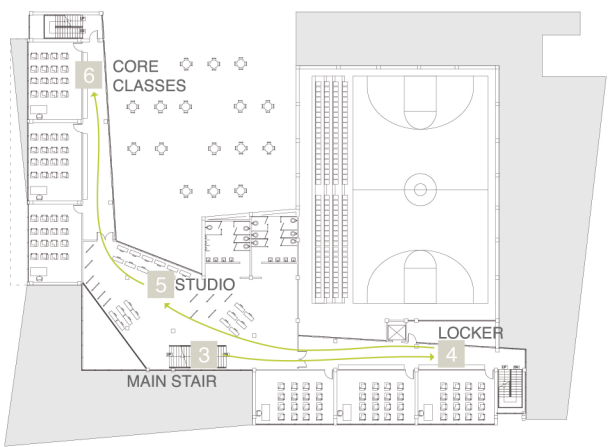


STUDIO CONCEPT HIGH SCHOOL

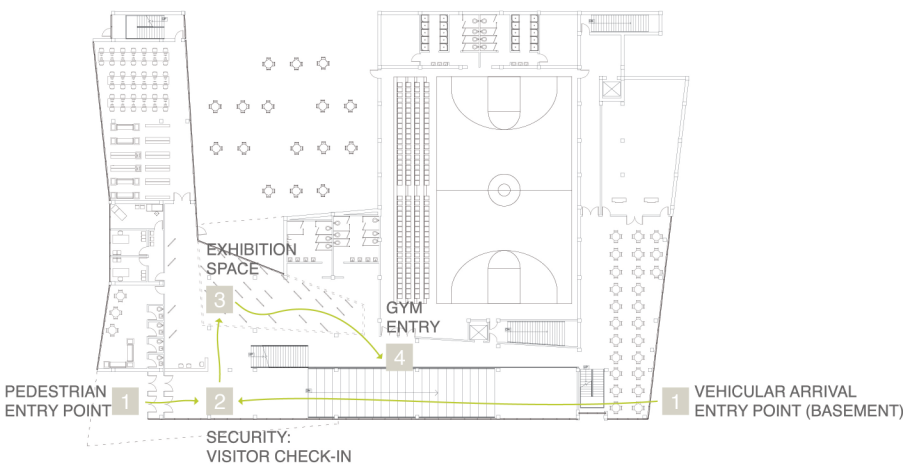
PUBLIC // SEMI-PRIVATE // PRIVATE:



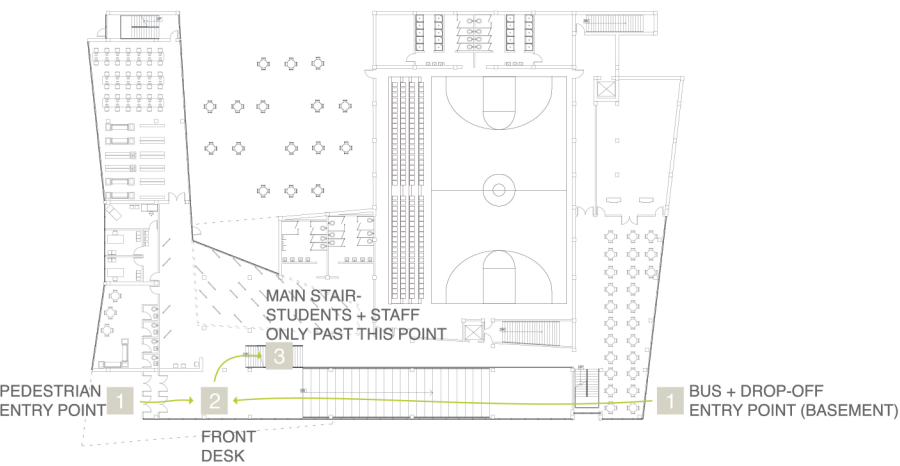
STUDENT CIRCULATION: CLASSROOM LEVELS



VISITOR ACCESS + CIRCULATION:



STUDENT CIRCULATION: GROUND LEVEL



STUDIO CONCEPT HIGH SCHOOL

ENVIRONMENTAL ADAPTATIONS:

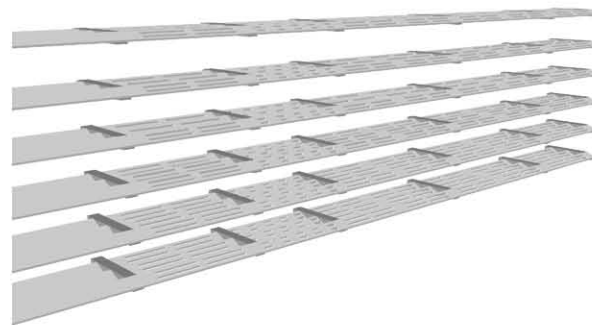
MUCH OF THE SCHOOL'S FACADE IS COMPOSED OF GLASS CURTAIN WALLS IN AN EFFORT TO INTERACT WITH THE NEIGHBORING COMMUNITY AND TO ENABLE NATURAL LIGHTING WITHIN. HOWEVER, EXCESSIVE GLARE AND HEATING MAY HINDER THE INHABITABLE SPACES OF THE BUILDING.

TO COMBAT THESE ISSUES, A PASSIVE SYSTEM OF **HORIZONTAL LOUVERS** AND **VERTICAL FINS** SERVE TO PROTECT THE INTERIOR OF THE SCHOOL WHILE STILL MAINTAINING THE DESIRED CONNECTIVITY WITH ITS SURROUNDINGS.

SYSTEM OBJECTIVES:

- // REDUCE GLARE IN INTERIOR SPACES.
- // PREVENT EXCESSIVE HEATING FROM SUN.
- // ALLOW NATURAL LIGHTING.
- // ALLOW EXTERIOR VIEWS FROM PUBLIC SPACES.
- // PROVIDE PRIVACY IN SPECIFIC AREAS.
- // ENHANCE ENERGY EFFICIENCY:
 - // NATURAL LIGHTING- REDUCE USE OF ELECTRICITY.
 - // PREVENT HEATING- DECLINE USE OF A/C.

ENVIRONMENTAL CONTROLS:

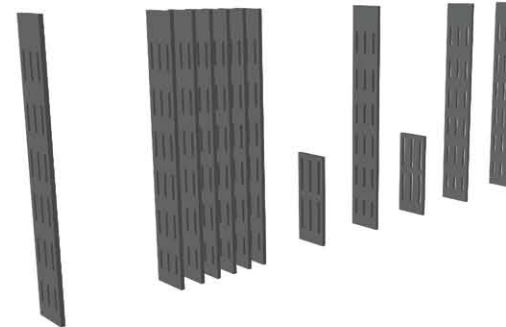


34" DEPTH HORIZONTAL LOUVERS
// IMPEDE EXCESSIVE OVERHEAD SUNLIGHT INFILTRATION.
// STRATEGICALLY LOCATED TO FACE SOUTHERN EXPOSURE.

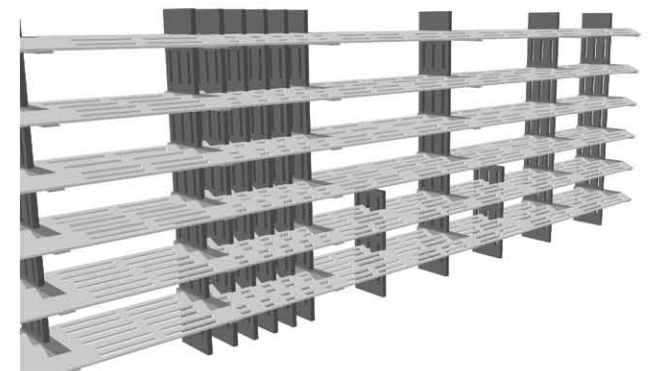
BUILDING APPLICATION:



- 1** PEACHTREE ST. FACADE:
// WESTERN ORIENTATION
// **GROUND LEVEL:** VERTICAL FINS ALONG FACADE + OVERHANG FROM UPPER LEVELS.
// **UPPER LEVELS:** HORIZONTAL LOUVERS + VERTICAL FINS PLACEMENT DESIGNED TO COMPLEMENT ACTIVITIES WITHIN.
- 2** MULTI-STORY ATRIUM:
// WESTERN + SOUTHERN ORIENTATION
// LARGE OVERHANG FROM ROOF.
// VERTICAL FINS TO SHIELD EAST + WEST SUNLIGHT.
- 3** NORTH AVE. FACADE:
// SOUTHERN ORIENTATION
// HORIZONTAL LOUVERS + VERTICAL FINS LIMIT INFILTRATION FROM EAST + SOUTH + WEST.
- 4** REAR FACADE:
// EASTERN ORIENTATION
// **GROUND LEVEL:** VERTICAL FINS DEFLECT SUNLIGHT IN CAFE.
// **UPPER LEVELS:** EASTERN FACADES CLAD WITH BRICK VENEER PANELS.



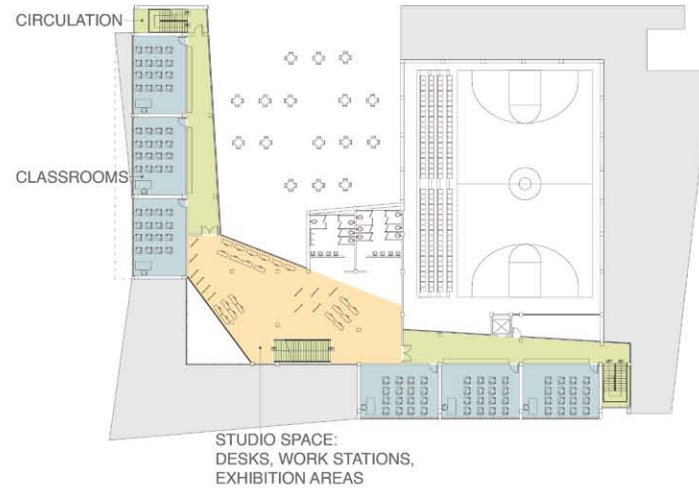
26" DEPTH VERTICAL FINS
// REDUCE SUNLIGHT EXPOSURE IN EAST + WEST ORIENTATIONS.
// PLACED TO RESPOND TO SPECIFIC ACTIVITIES WITHIN INTERIOR SPACES.



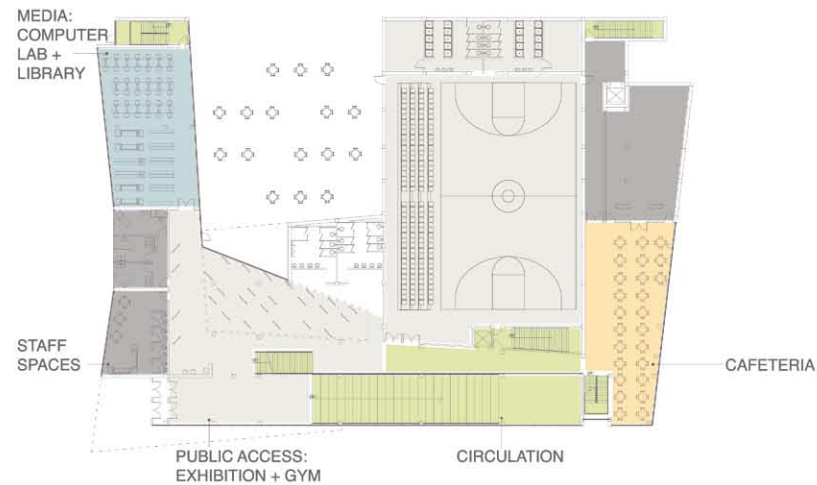
LOUVERS + FINS COMBINATION
// REDUCE EXPOSURE IN SPACES RECEIVING ABUNDANT SUNLIGHT DUE TO ORIENTATION.
// SERVE SOUTHERN FACADE + PORTIONS OF WESTERN FACADE.

STUDIO CONCEPT HIGH SCHOOL

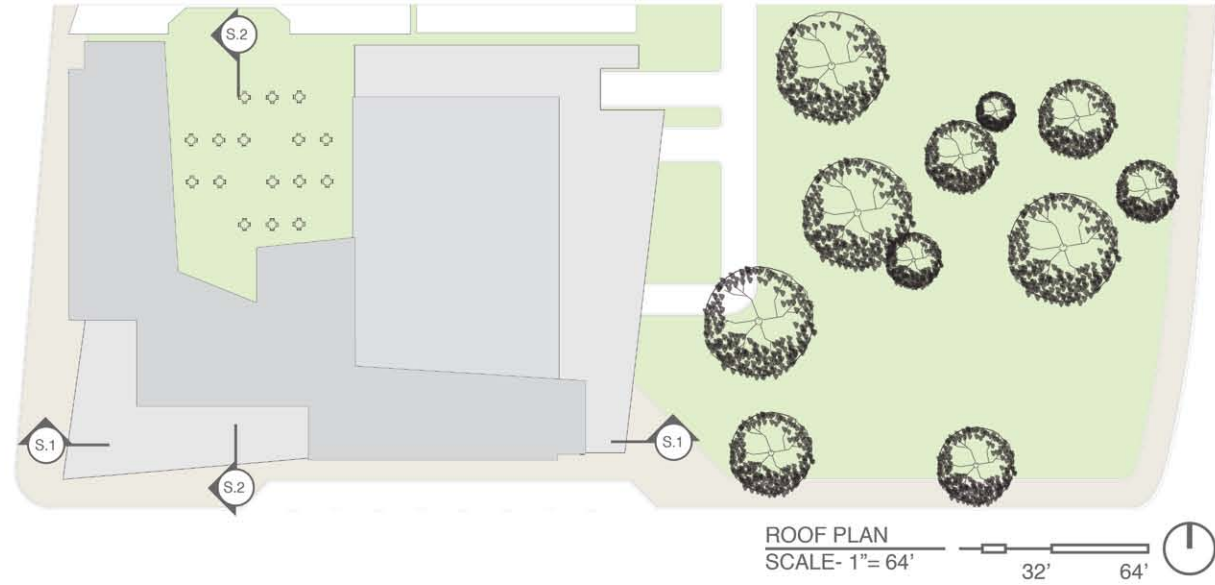
PROGRAM ZONES- CLASSROOM LEVELS:



PROGRAM ZONES- GROUND LEVEL:

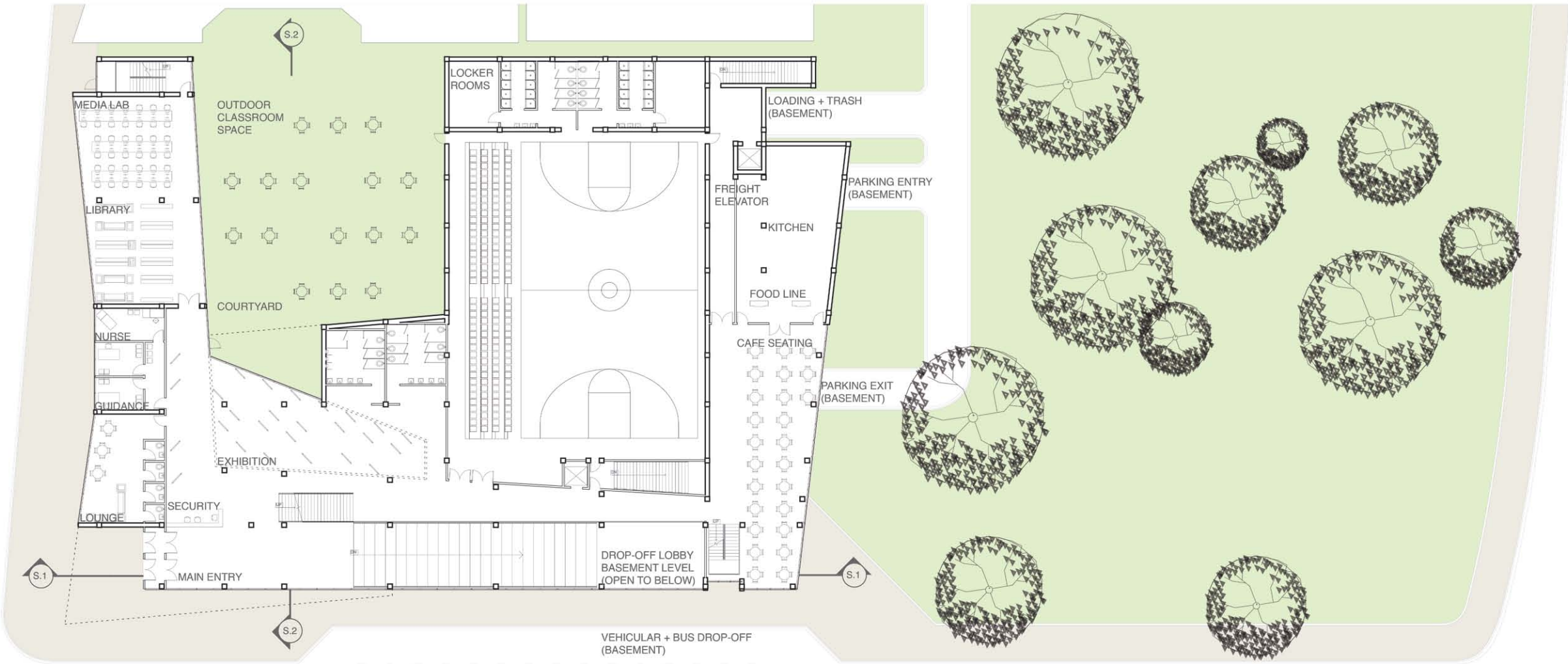


PLANS:



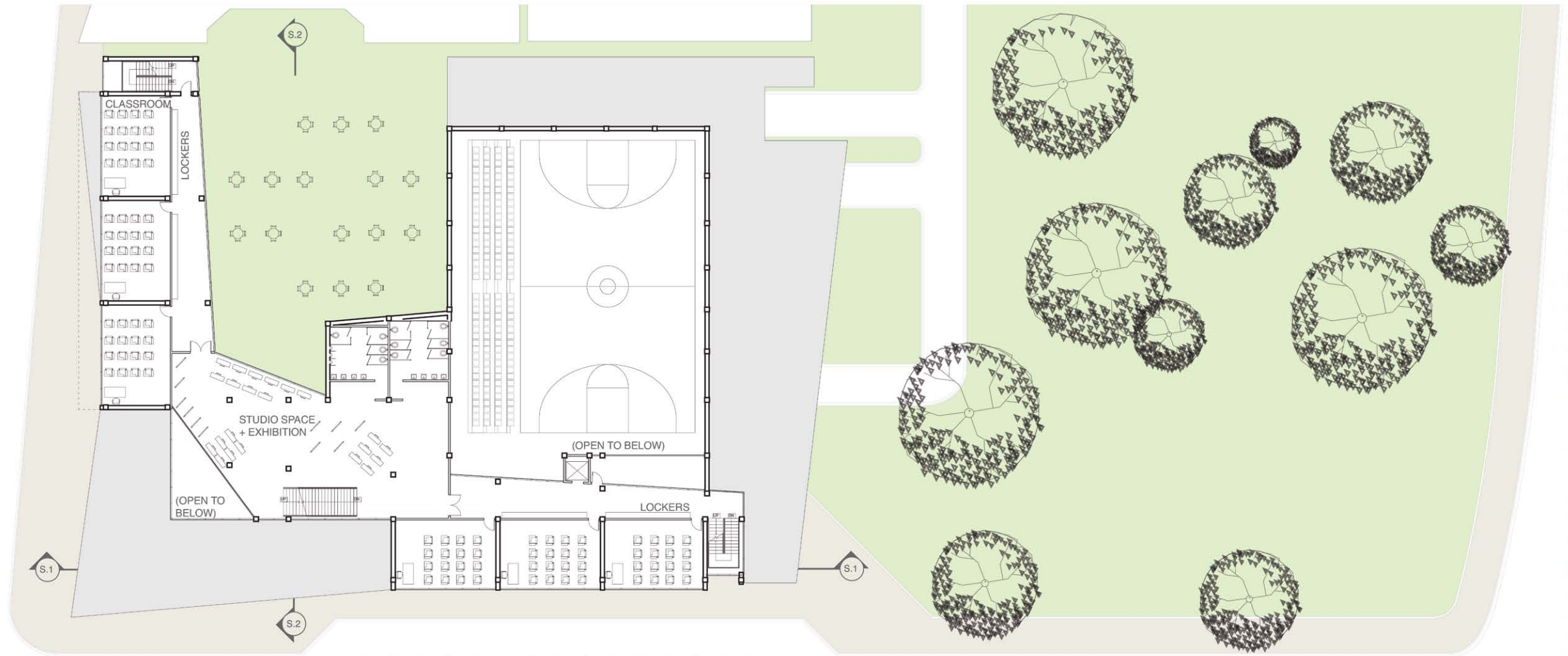
STUDIO CONCEPT HIGH SCHOOL

PLANS:

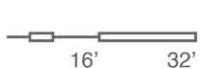


STUDIO CONCEPT HIGH SCHOOL

PLANS:

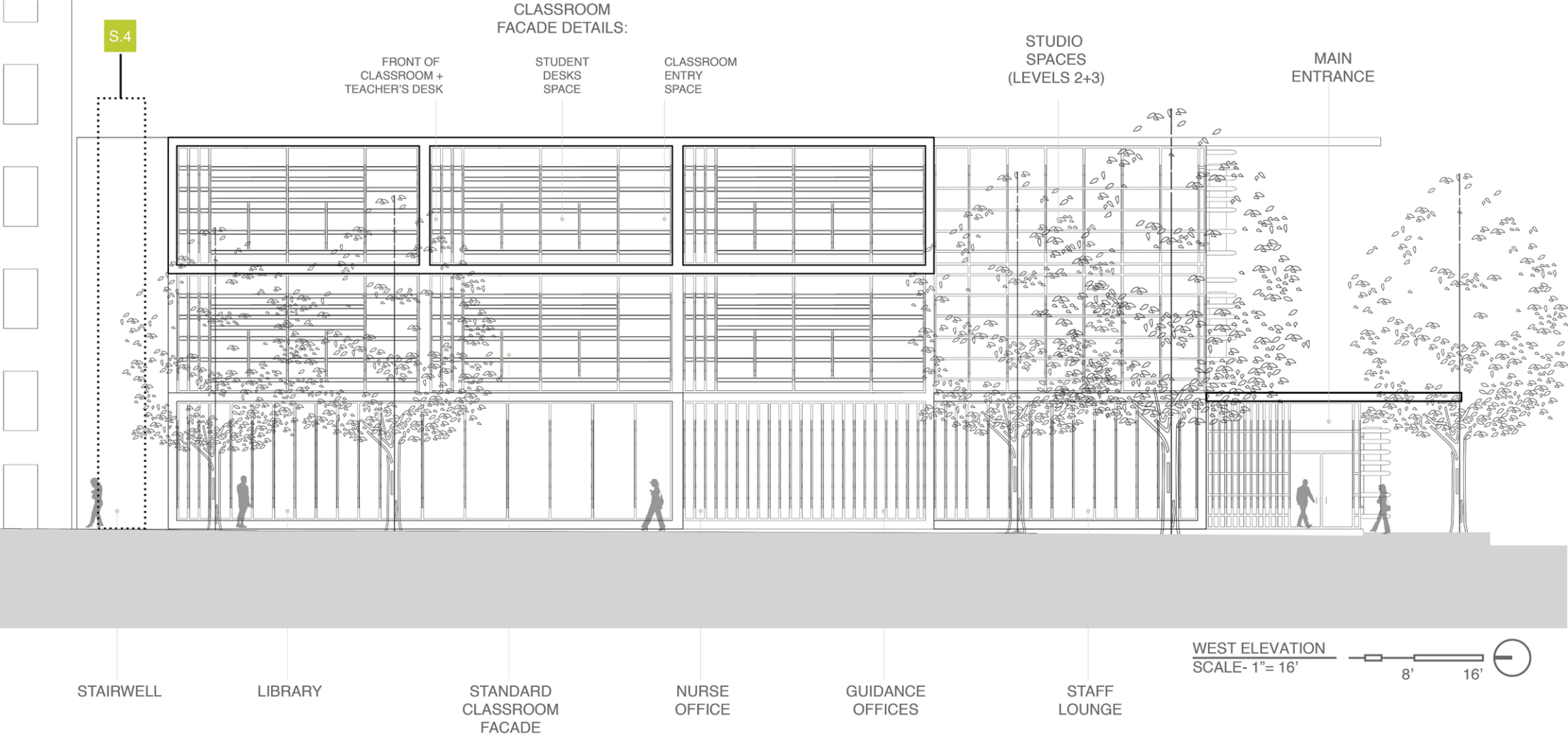


LEVEL 2 PLAN
SCALE- 1"= 32'



STUDIO CONCEPT HIGH SCHOOL

BUILDING ELEVATIONS:



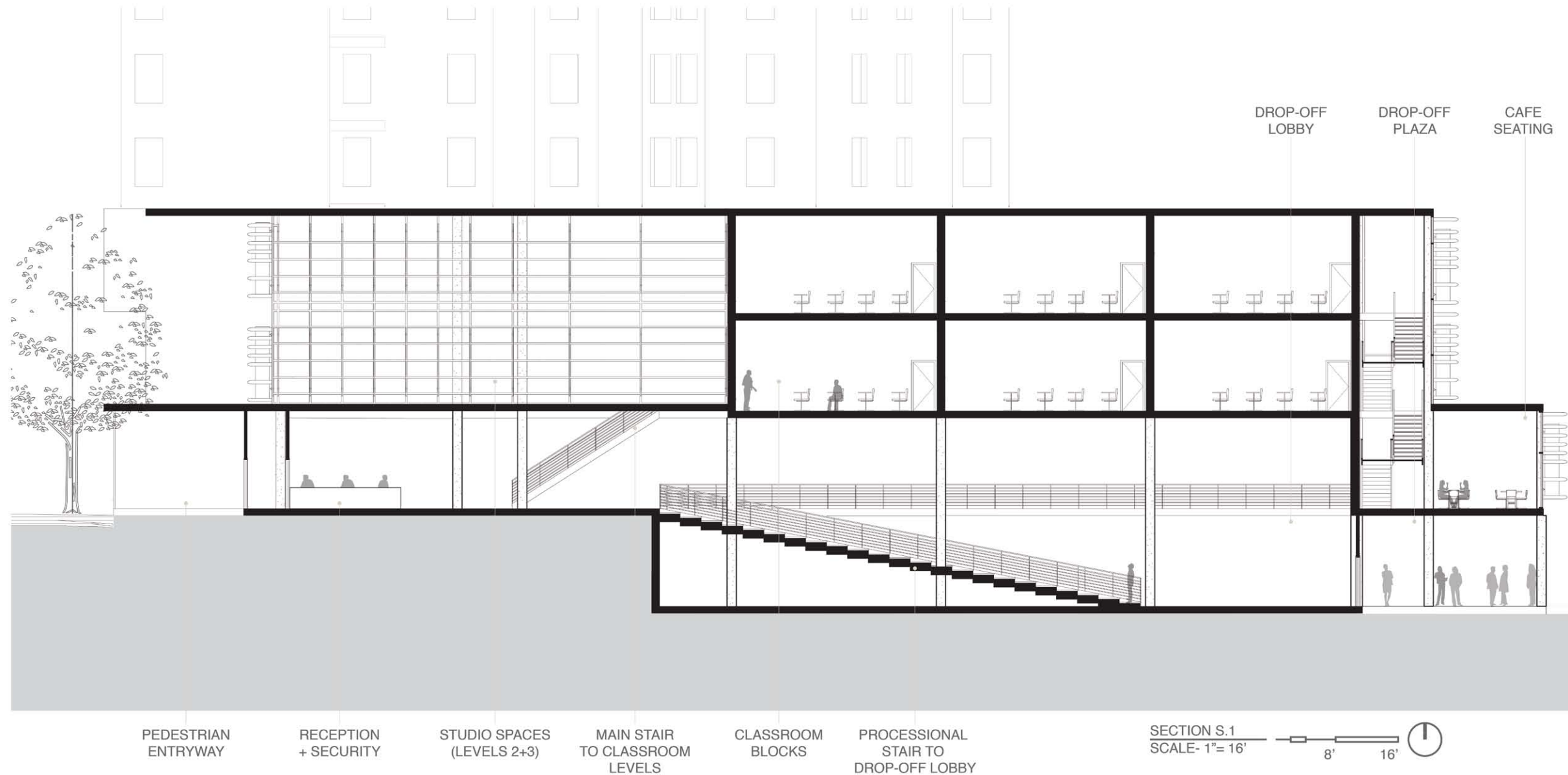
STUDIO CONCEPT HIGH SCHOOL

BUILDING ELEVATIONS:



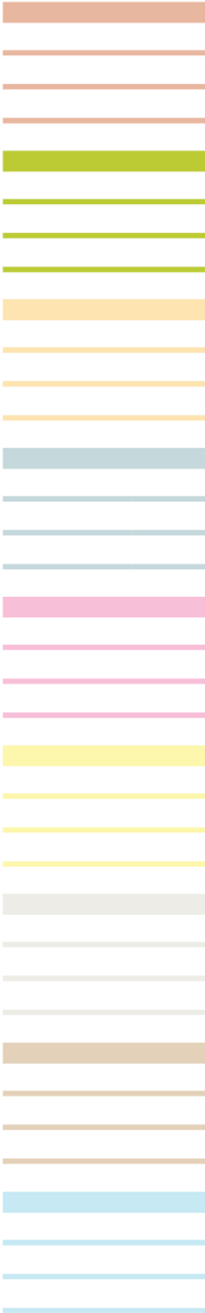
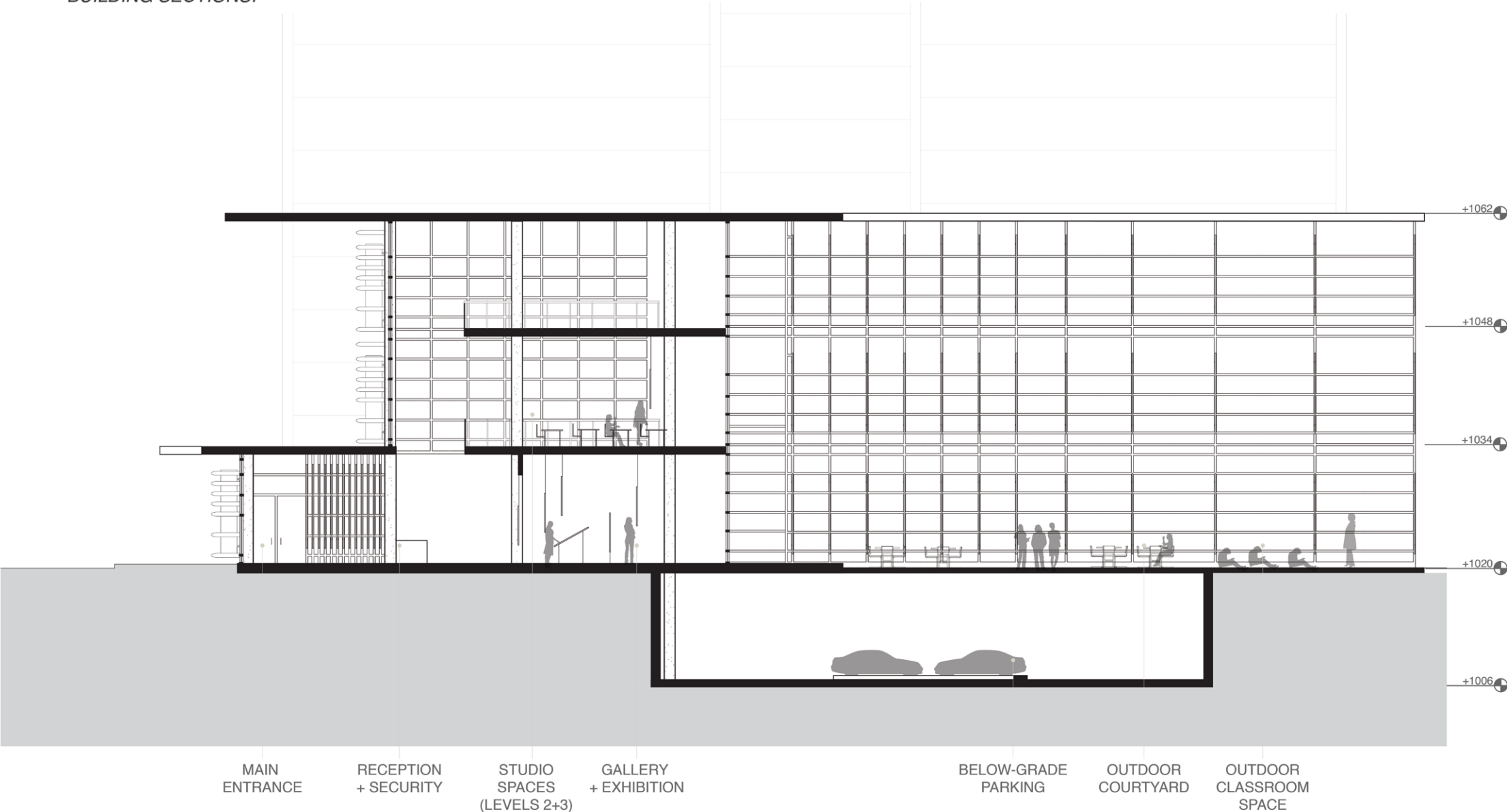
STUDIO CONCEPT HIGH SCHOOL

BUILDING SECTIONS:



STUDIO CONCEPT HIGH SCHOOL

BUILDING SECTIONS:



STUDIO CONCEPT HIGH SCHOOL

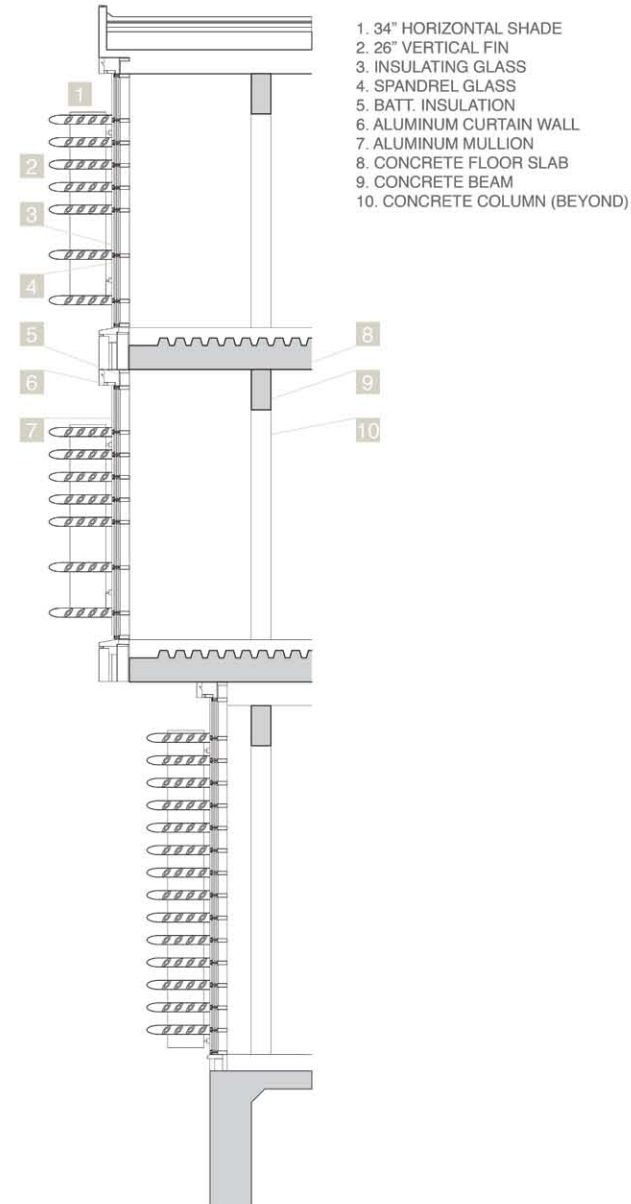
FACADE COMPOSITION:

GLASS CURTAIN WALLS
 // ENCLOSE 3-STORY LOBBY + ATRIUM.
 // SHADED BY LARGE ROOF OVERHANG.
 // ALLOW UNOBSTRUCTED VIEWS OF MIDTOWN TO STUDIO SPACES.

GLASS CURTAIN WALLS WITH SHADING DEVICES
 // VERTICAL AND HORIZONTAL FINS USED CONJUNCTION WITH ONE ANOTHER.
 // PLACED STRATEGICALLY DEPENDENT ON ACTIVITIES IN SPECIFIC SPACE.
 // HIGHLY CUSTOMIZABLE FOR EACH INDIVIDUAL SPACE.
 // PRECEDENT: UNIVERSITY OF KENTUCKY BIOLOGICAL PHARMACEUTICAL COMPLEX BUILDING (2010).
 // ELLENZWEIG AND EOP ARCHITECTS.
 // SHADING DEVICES IN USE WITH MULTI-STORY GLASS CURTAIN WALL.

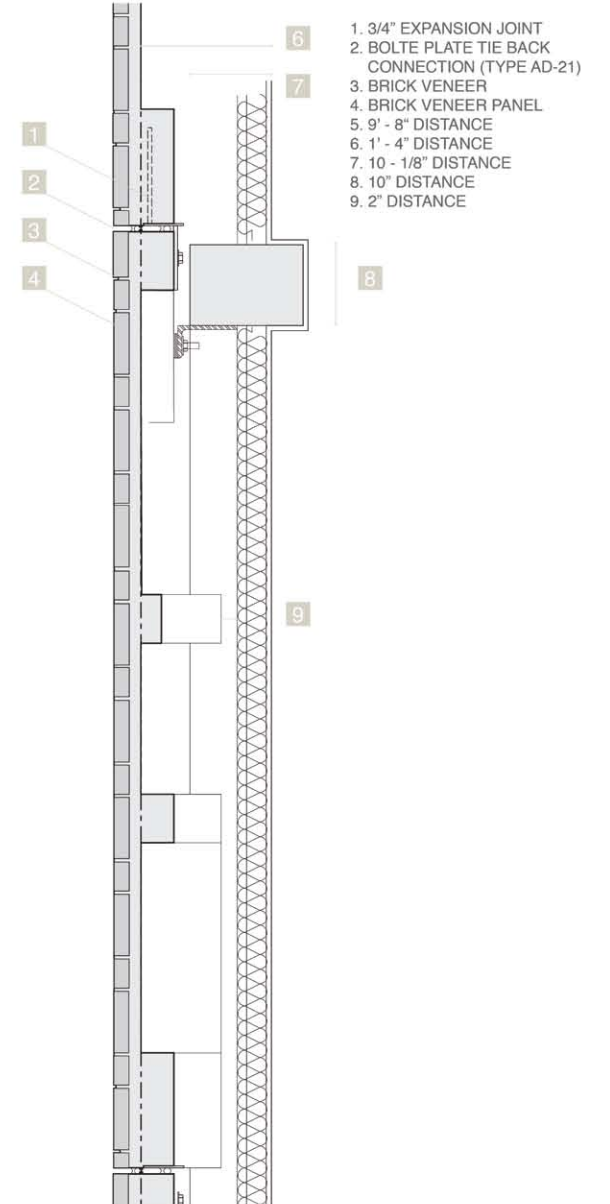
BRICK VENEER PANELS
 // ECONOMICAL AND CUSTOMIZABLE TO FACADE CONDITIONS.
 // SOLID EXTERIOR AESTHETIC TO CONTRAST LIGHT, TRANSLUCENT CURTAIN WALLS.

// PRECEDENT: 290 MULBERRY STREET (2008).
 // SHoP ARCHITECTS.
 // BRICK VENEER CONSTRUCTION IN MULTI-STORY PANEL APPLICATION.



1. 34" HORIZONTAL SHADE
2. 26" VERTICAL FIN
3. INSULATING GLASS
4. SPANDREL GLASS
5. BATT. INSULATION
6. ALUMINUM CURTAIN WALL
7. ALUMINUM MULLION
8. CONCRETE FLOOR SLAB
9. CONCRETE BEAM
10. CONCRETE COLUMN (BEYOND)

SECTION S.3
 SCALE- 1"= 10'
 5' 10'

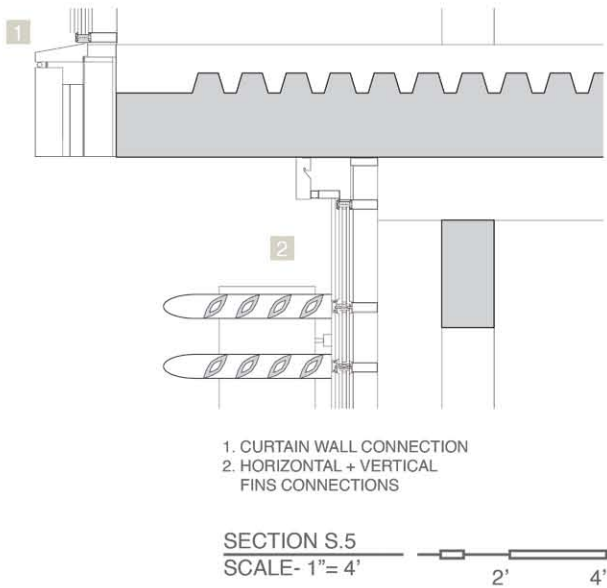


1. 3/4" EXPANSION JOINT
2. BOLTE PLATE TIE BACK CONNECTION (TYPE AD-21)
3. BRICK VENEER
4. BRICK VENEER PANEL
5. 9' - 8" DISTANCE
6. 1' - 4" DISTANCE
7. 10' - 1/8" DISTANCE
8. 10" DISTANCE
9. 2" DISTANCE

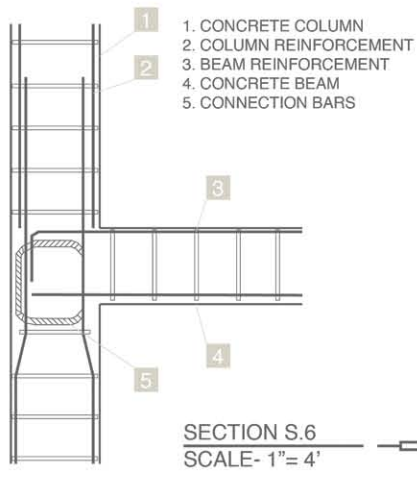
SECTION S.4
 SCALE- 1"= 2'
 1' 2'

STUDIO CONCEPT HIGH SCHOOL

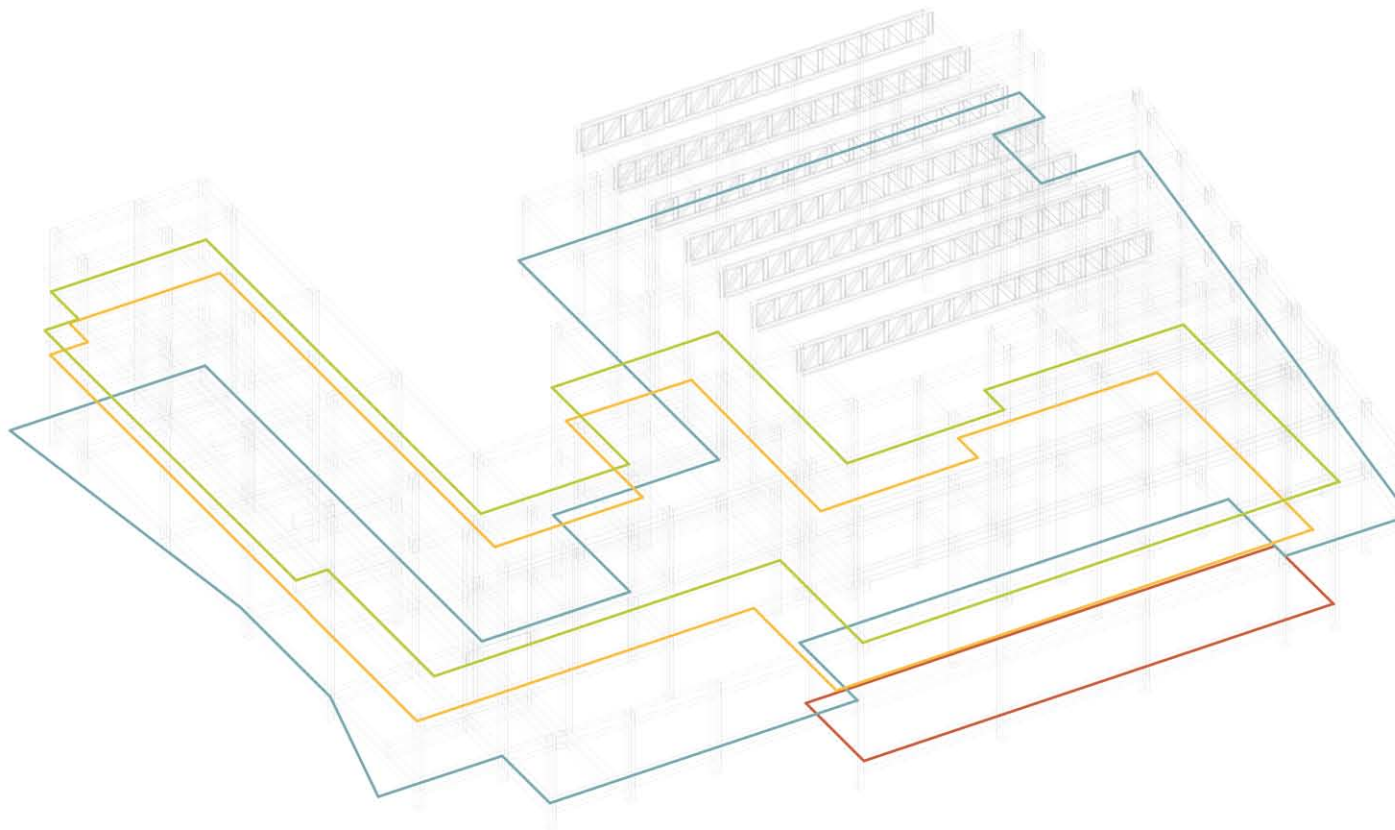
CONNECTION DETAIL:



STRUCTURE DETAIL:

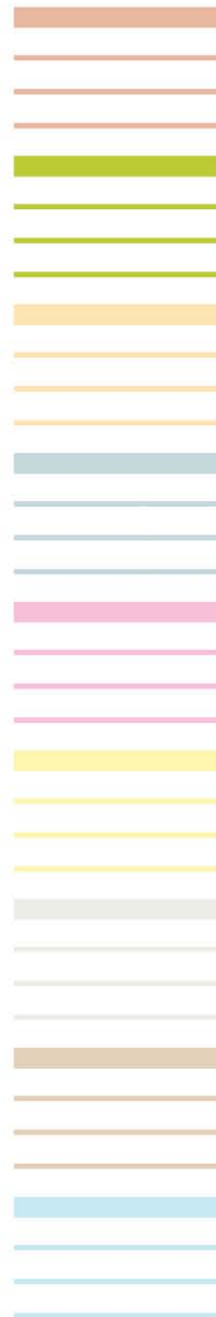


STRUCTURE AXONOMETRIC:



LATERAL LOAD RESISTING SYSTEM

- LEVEL 3- ELEV +1048.0'
LEVEL 2- ELEV +1034.0'
LEVEL 1- ELEV +1020.0'
BASEMENT LEVEL- ELEV +1008.0'



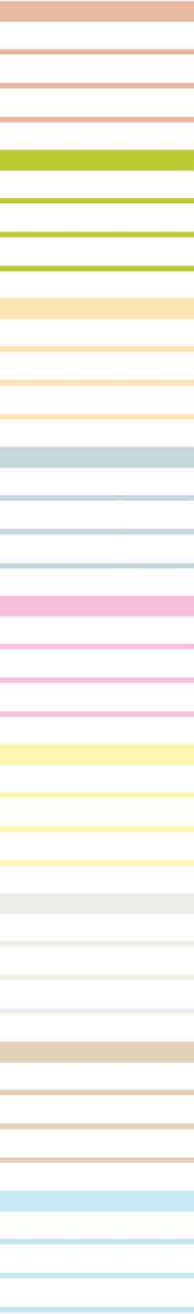
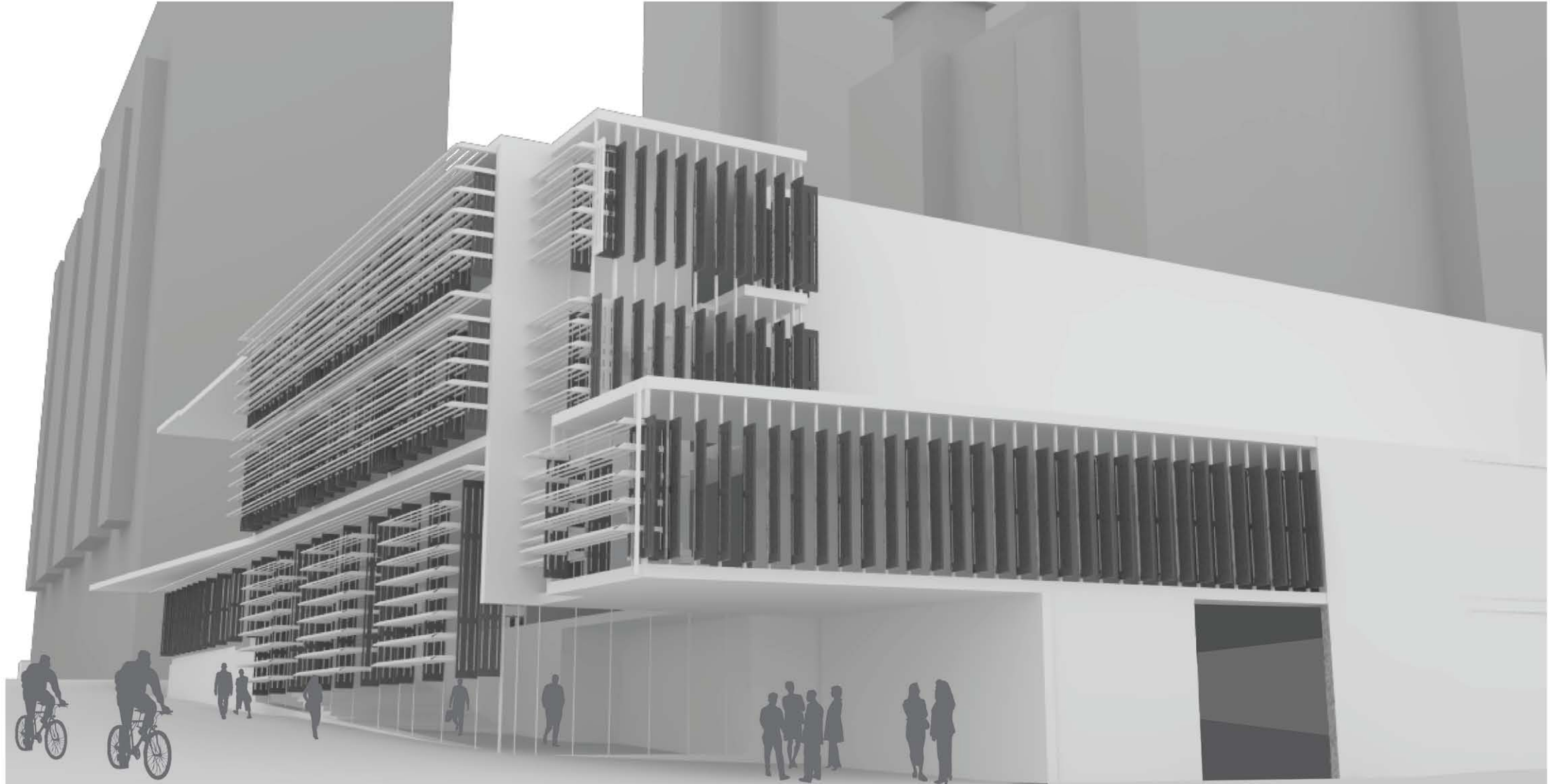
STUDIO CONCEPT HIGH SCHOOL

3-D MODEL: ATRIUM + EXHIBITION



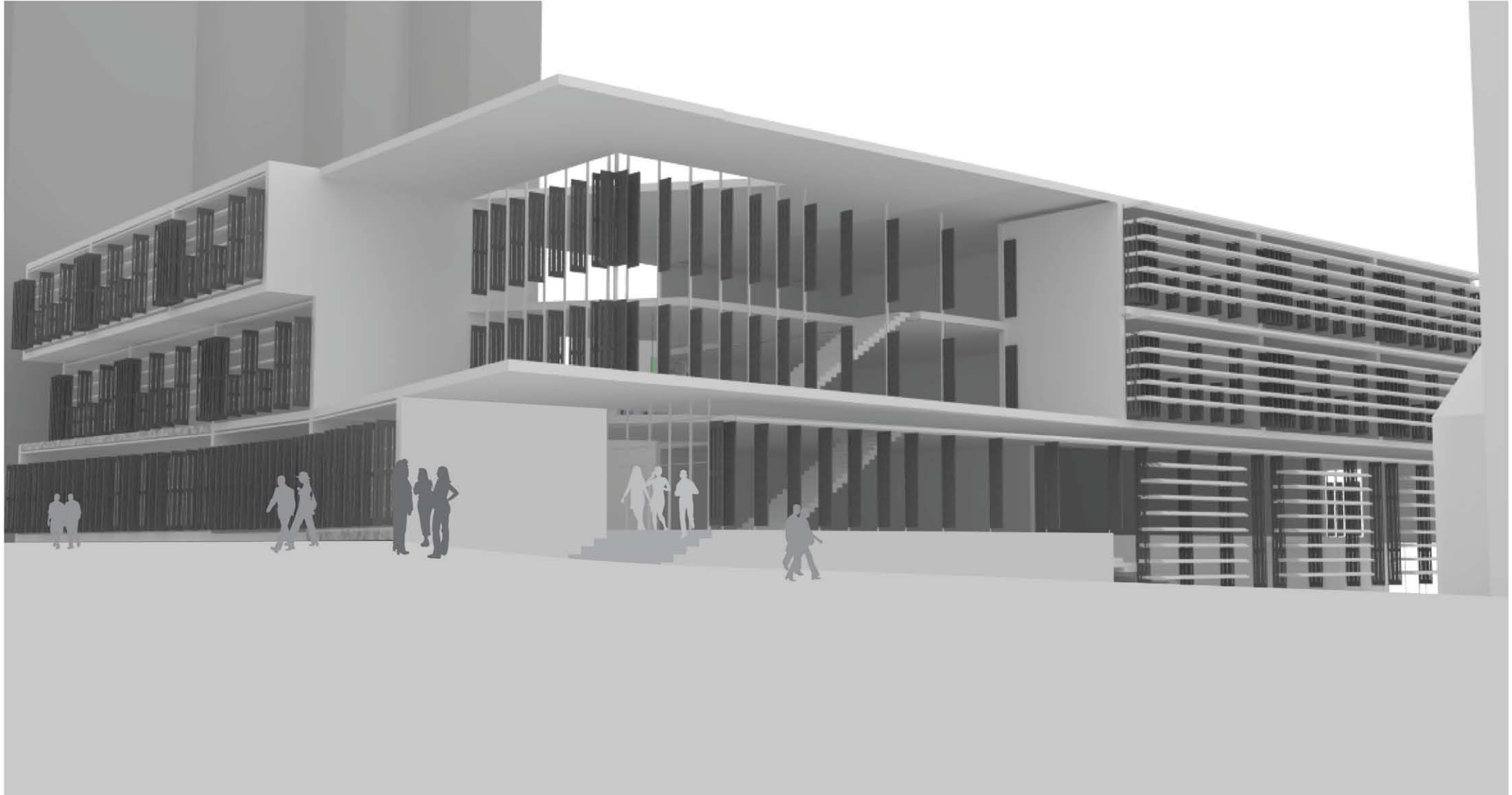
STUDIO CONCEPT HIGH SCHOOL

3-D MODEL: DROP-OFF PLAZA + REAR FACADE



STUDIO CONCEPT HIGH SCHOOL

3-D MODEL: MAIN ENTRY



STUDIO CONCEPT HIGH SCHOOL

3-D MODEL: STUDIO SPACE

