

Weekly Commodities Charts Newsletter

October 2, 2017

The Weekly Commodities Charts Newsletter provides Cornelius Luca's trade ideas, model signals, and absolute charts

© 2017 Luca Global Markets, LLC. All rights reserved. This content is provided as general information only and does not constitute investment advice or a representation that any investment, security or other product is suitable for any person. This content reflects the opinions only of the author and cannot be interpreted as advice.

This content is the intellectual property of Cornelius Luca. Any copying, distribution or redistribution of this content is expressly prohibited without the prior written consent of Cornelius Luca.

Cornelius Luca shall not be liable for any errors in the content, or for any actions taken in reliance thereon.

Trade Ideas

- Energy: Short crude oil *while below* the 21-day exponential moving average
- Metals: Short gold *while below* the 5-day exponential moving average
- Softs: Short coffee *while below* the 5-day exponential moving average

Commodities Models – Daily & Weekly

	<i>Commodity</i>	<i>Daily Model</i>	since	Daily Bias (> or < 21-day EMA)	Daily Risk	<i>Weekly Model</i>	since	Weekly Bias (> or < 21-week EMA)	Weekly Risk
Energy	Crude Oil	S	28-Sep	sideways	bearish	S	2-Oct	slightly bullish	slightly bearish
	Brent Crude	S	27-Sep	sideways	bearish	S	2-Oct	slightly bullish	slightly bearish
	Natural Gas	S	2-Oct	slightly bearish	bearish	S	2-Oct	slightly bearish	slightly bearish
Metals	Gold	S	29-Sep	bearish	slightly bearish	S	11-Sep	sideways	neutral
	Silver	S	29-Sep	bearish	slightly bearish	S	8-Sep	slightly bearish	slightly bearish
	Copper	S	29-Sep	slightly bearish	slightly bearish	S	8-Sep	slightly bullish	slightly bearish
Softs	Coffee	S	21-Sep	bearish	slightly bearish	S	21-Sep	slightly bearish	slightly bearish
	Soy Meal	S	28-Sep	slightly bullish	slightly bearish	S	25-Sep	sideways	neutral
	Wheat	S	2-Oct	slightly bullish	slightly bearish	S	2-Oct	sideways	neutral
	Corn	S	2-Oct	slightly bullish	slightly bearish	S	2-Oct	slightly bearish	slightly bearish

Source: Proprietary Luca Global Markets, LLC Model

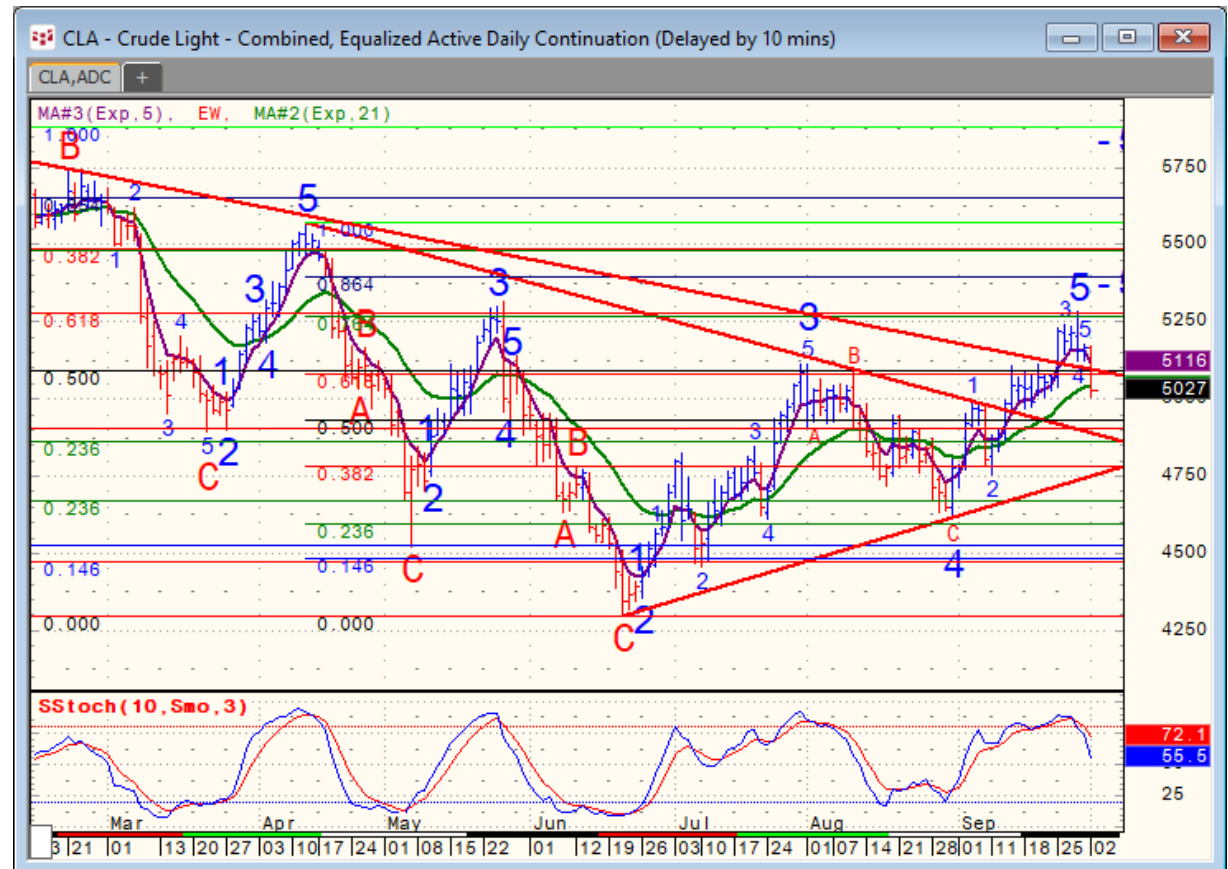
Commodities Energy Trade Idea

Comment:

Short crude oil *while below the 21-day EMA*

- Crude oil finally sank below its 5-day EMA after over stretching to a 4-month top
- It had reached the bullish flag target at 52.00
- It's dipping below the 21-day EMA as well
- Initial support: 49.30
- Further support: 48.20 & 47.80 & 46.60
- Initial resistance: 51.66
- Further resistance: 52.86 & 53.13

•Fast stochastics: bearish



CQG Inc. © 2017 All rights reserved worldwide. <http://www.cqg.com>

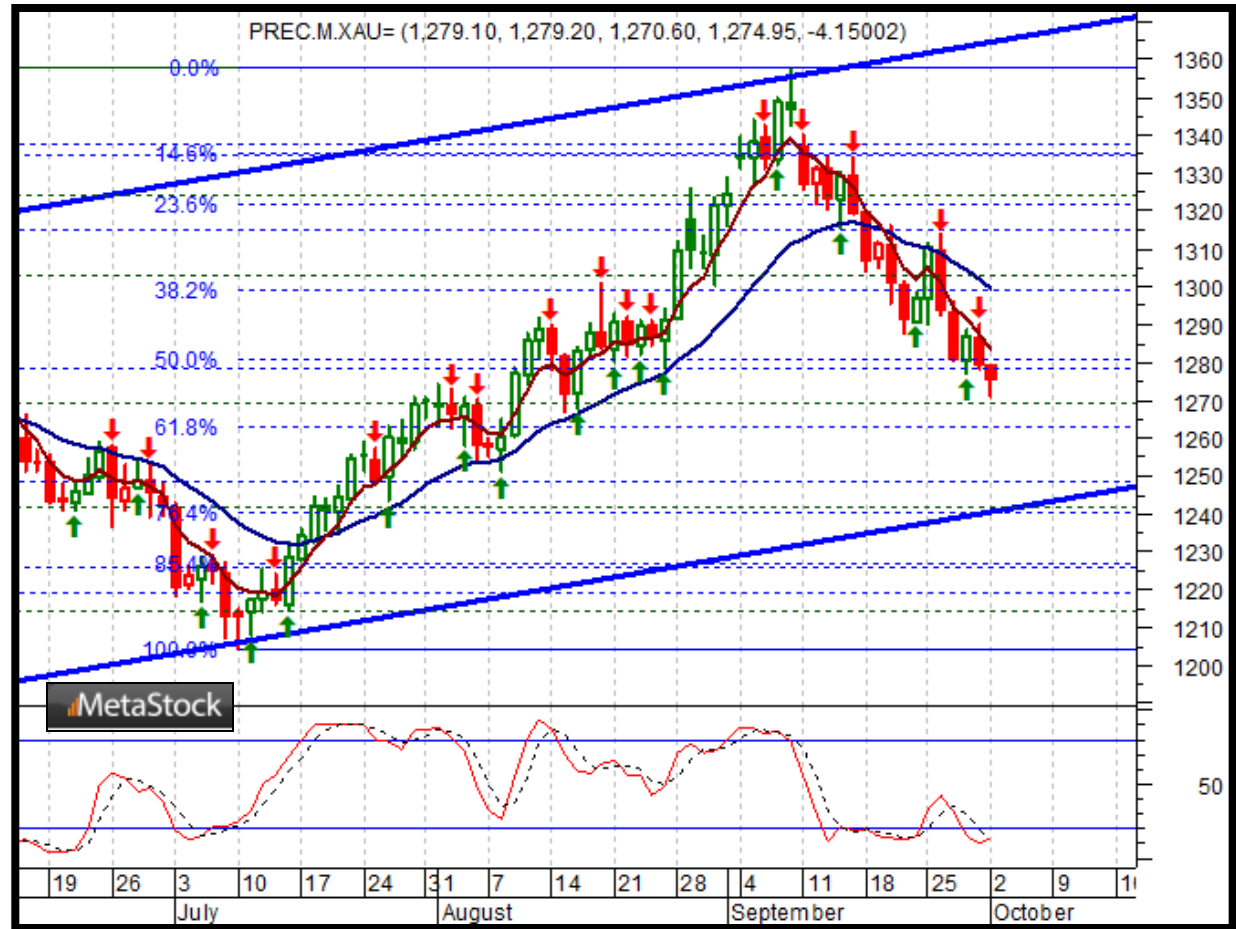
Mon Oct 02 2017 12:13:15, CQG 17.12.860

Commodities Metals Trade Idea

Comment:

Short gold *while below* the 5-day EMA

- Gold extended its decline from a 13-month high on 9/8 to a 1 ½-month low
- It remains below both its 5-day & 21-day EMA
- Immediate support: 1,271
- Further support: 1,264 & 1,215
- Initial resistance: 1,284
- Further resistance: 1,339 & 1,358
- Fast stochastics: bearish



Soft Commodities Trade Idea

Comment:

Short coffee while below the 5-day EMA

- Coffee has fallen every day since 9/21 to reach a 2 ½-month low
- It trades below both its 5- & 21-day EMA
- Immediate support: 125.30
- Further support: 123.30 & 120.25
- Initial resistance: 128.90
- Further resistance: 131.47 & 141.35
- Fast stochastics: bearish



How to Use the Heat Map

Bias: If the Candle > 21-period EMA = bullish
 If the Candle < 21-period EMA = bearish
 If the Candle around 21-period EMA = sideways

Long or Short	Commodities	Since when		Risk: Bullish or Bearish Candle as of Monday am EST					
		Daily Model	since	Daily Bias (> or < 21-day EMA)	Daily Risk	Weekly Model	since	Weekly Bias (> or < 21-week EMA)	Weekly Risk
Energy	Crude (CLc1)	S	27-Apr	bullish	slightly bullish	L	23-Mar	slightly bearish	slightly bullish
	Brent (LCOc1)	L	21-Apr	slightly bullish	slightly bullish	L	6-Apr	slightly bearish	slightly bullish
	Natural gas (NGc1)	S	23-Apr	bearish	bearish	S	20-Apr	bearish	slightly bearish
	Palm oil (FCPOc1)	L	24-Apr	sideways	neutral	S	20-Apr	slightly bearish	slightly bearish
Metals	Gold (GCc1)	S	24-Apr	bearish	bearish	S	20-Mar	slightly bearish	slightly bearish
	Silver (SIc1)	S	22-Apr	bearish	bearish	S	24-Apr	bearish	bearish
	Platinum (PLc1)	S	20-Apr	bearish	bearish	S	20-Mar	bearish	slightly bullish
	Copper (HGc1)	L	24-Apr	slightly bearish	slightly bullish	S	24-Apr	slightly bearish	slightly bearish
Softs	Coffee (KCN5)	L	24-Apr	sideways	neutral	L	24-Apr	slightly bullish	slightly bullish
	Cocoa (LCCN5)	L	23-Apr	bullish	bullish	L	13-Apr	bullish	bullish
	Soy meal (SMN5)	S	24-Apr	bearish	slightly bearish	S	24-Apr	bearish	slightly bearish
	Wheat (WN5)	S	24-Apr	bearish	slightly bearish	S	24-Apr	bearish	bearish
	Corn (CN5)	S	20-Apr	bearish	bearish	S	6-Apr	bearish	bearish

Source: Proprietary Luca Global Markets, LLC Model

L = long
 S = short