

## SPIG-LITE Pro

Domestic Glass Railings

- Only 2 spigots & fixings required per metre

Extremely quick to install, elongated holes to allow for easy alignment

- No need to drill the glass

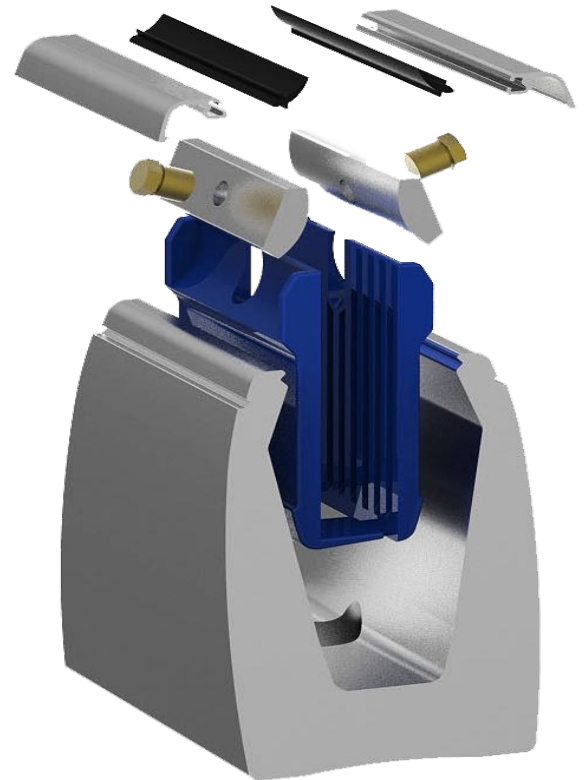
Our glass clamping mechanism removes the need to hold the glass with locking pins

- No drainage issues

Free drainage between the spigots means no water gets trapped inside the balcony area

- Uses the proven adjustment system as Posi-glaze

Horizontal alignment to each glass pane, ensuring the top edge of the glass is equal



## Explore Our Range



- Up to 1.5 kN Loadings  
For uses from domestic to light commercial
- Ease of Adjustment  
At the turn of a screw watch the glass manoeuvre
- Simple to Install  
Glass clamps are easily installed before positioning the glass
- Excellently Engineered  
Lightweight design with precision design to keep strength