

AUCTION

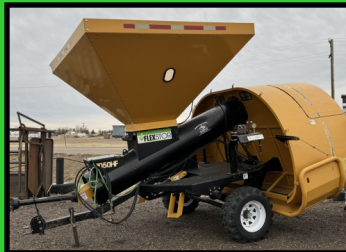
Farm, Construction & Livestock Equipment, Vehicle, Tool Consignment Auction

Saturday, February 24, 2024 @ 9:30 a.m.
48201 Witzel Way, Burlington, Colorado 80807

Bid & Watch Online
www.equipmentfacts.com

Tractor, Vehicles, Trailers, Skid Steers

- **John Deere 8530 Tractor**, 4 remote, 3pt. Quick att., 1000 pto w/ 300 gal. saddle tanks, stock roller, green star ready, ivt transmission, 8332 hrs.
- **International 1086 Tractor**, 2 remote hyd., 540/1000 pto, 3pt., overhauled, 0325 engine hrs. runs good.
- **John Deere 4010 Tractor**, w/ loader, no cab, 540 pto, diesel, 2 remote.
- **John Deere 325 Skid Steer**, w/ 8ft. Snow pusher.
- **John Deere 575 Skid Steer**, 1500 hrs., 40 horse, lift 1300 to 1500lbs., runs great
- **2007 Harley Davidson Trike w/ California side car**, 15475 miles.
- **1987 Chev. Corvette**, convertible, runs good, good cond. 97404 miles
- **1967 Ford Mustang**, 302 engine, rebuilt, bushings, balls, brakes, rotors, calipers, hoses, rear drums, etc.
- **2006 Toyota Tundra flatbed Pickup**, 4.7 liter, V8, 4x4, auto. 325,000 miles.
- **2007 GM Express Van/Truck**, 4.8L motor.
- **Panel Trailer**, G.N.
- **2017 Polaris Ranger**, 1000xp, 4750 mi.



All Federal and State regulations apply for firearm purchased. **Background check is additional \$ 25.00.** Colorado has a three day hold after background check. clears Guns will be available **Thursday, Feb. 29** at the Auction lot office from 8:00 to 4:00. If cannot be picked up at this time, pickup arrangements by appointment only, must be picked up before March 24, 2024. **WILL NOT SHIP. * Hand guns sold to Colorado residents only.**

Collectibles & Guns

- Authentic miniature replica of original carousel figurines to include PTC, PJ's collection from Historical National Landmark, Kit Carson County Carousel.
- Marlin 336, 30/30 win. Lever action.
- GSG-522, 22lr. Rifle.
- Smith & Wesson, M&P Shield 9mm pistol.
- EAA ea/r, 38special/357 mag. Revolver.
- Sig P320, 9mm pistol.
- Ruger Wrangler .22lr revolver.
- Andereson MFG AM-15 5.56/.223.
- Kel-tec CMR-30 .22mag rifle.
- Olympic arms AR-15, 5.56/.223 rifle.
- Henry mares leg, .22lr.
- Walther G22 .22lr rifle.
- Ruger Challenger .22lr.
- Ruger Amencon, 6.5 Creedmore, bolt action rifle.
- Magtech side by side 12 ga.
- Ithaca model 72 saddlegun, .22lr rifle.
- Hatfield .410 single shot gun.
- Black Ops 1.77 pellet rifle.
- BB Pistol, 1.77bb.
- MANY MORE ITEMS BY SALE TIME..

Tillage & Livestock Equipment

- **Flex STOR 1050 HF grain bagger.**
- **Kent Field Cultivator**, 55 ft.
- **Alley Way 16ft w/ 8ft. Chute**, manual head gate.
- **Big Valley Calf Cradle.**
- **West Valley 84R bale feed wagon.**
- **40- Hog/Goat panels**, stand alone, 16ft.
- **22- Windbreak panels**, stand alone, 24ft.
- **14- 8 bar panels**, stand alone, 24ft.
- **2- 8 bar panels**, stand alone, 24ft w/ 12ft. Gate.
- **14- Fenceline feed bunks**, stand alone, 24ft., 31 wide, some adj.
- **4- Feed bunks**, stand alone. 24ft.
- Several bundles of wood posts.
- **Bon Allen saddle** 16 seat padded, horn loose.
- **2- Saddles**, 16in. Padded seat.
- **Tub & Alley/Panels 10ft.**
- **Panels; 10 & 12ft.**
- **8 x 24 Lean to shed.**
- **2- 3pt. Post Hole augers.**
- **17- Failed Corn/Milo Round Bales. 1450#**
- **50- Drill stem**, 33ft avg. 1 7/8.
- **Top Air 300 Saddle tanks** for CAT 55.
- **Corn / Sunflower/ Sweet corn plates.**
- **Loading ramp; 20ft x 8.6ft.x 4ft.**
- **Tandem disc**, 3pt., 7ft.
- **Bushhog 3600 mower**, single wing, 11ft.
- **IH Leon 390 blade**, 8ft., 3pt.
- **Hog Panels.**
- **Welker Welding elec. Caker.**
- **Land Plane**, pull type, 7ft.
- **Excavator Attachments**
- **HT 40 header trailer.**
- **Bessler Stalk Chopper**, 20ft.
- **Krause 2190 tandem disc.**, 45ft.
- **Several assorted skid steer attachments.**

Shop & Garden & Recreation Equipment

- **TMG Industrial 21x19 Double garage metal shed** with side entry door, 400 sq. foot, 8ft. Eave. In Box.
- **2- 20ft. Storage Units.**
- **EZGO Golf Cart**, gas.
- **EZGO Workhorse Cart**, gas, 4x4 box..
- **John Deere LT180 auto riding mower**, 48" deck, v twin. 602 hrs.
- **Snap On 11 drawer tool box.**
- **Husky Tool top/bottom tool box.**
- **Kobalt bottom toolbox, 35x60**
- **Craftsman top toolbox, 51x25**
- **Trailer of power tools, hand tools.**
- **Landscape chips.**
- **50- landscape pavers.**
- **Fish pond tank.**
- **Kenmore Electric Oven.**
- **4- 20in. Ford rims.**
- **Upright freezer.**
- **Propane Gas Grill**
- **Trailer of Snap-On & Craftsman tools.**



Charlene Flock—719-349-1992
Luke Terrell—970-554-1199
Sydney Terrell—719-350-0867
Steve Short—719-349-0434
Donn Witzel—719-342-5513
Braden Witzel—719-342-0371
Email: Flockauctions@yahoo.com
Website: Flockauctionsllc.com

Pictures can be found on web site. Terms of Sale: Driver license required for buyer number. Cash, Negotiable check day of sale. We accept Visa/Master Card w/ 4% additional fee. Online buyers— Payment due in full within 3 business days. **NO EXCEPTIONS.** Nothing removed until settled for. Not responsible for items after sold. Announcements sale day take precedence over printed material. Not responsible for accidents. Online & phone bids additional 3% buyers premium. **Lunch will be available.**

More pictures and information can be found on
www.flockauctionsllc.com.

This list compiled several weeks prior to sale. Many more items by sale time. More pictures at flockauctionsllc.com Consignments welcome until Friday afternoon before auction. Equipment Facts features online items for this auction. Will sell online at 11:30 with collectibles/gun to follow.