



Good Beekeeping



Good Fellowship



Since 1948 Exploring the Wonderful World of Beekeeping Together

The Bee Buzzer

Monthly Publication of the

Northeastern Kansas Beekeepers' Association

VOLUME 77, NUMBER 2

EDITOR: TIM MARSHALL

February 2025

General Meeting

Monday, February 17th, 2025 (7:00 p.m.)

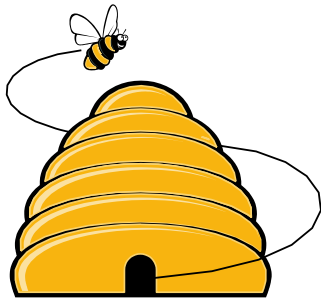
Douglas County Fairgrounds Bldg. 21N

2110 Harper St., Lawrence KS

Main Program: Late Winter/Early Spring Management w/ Joli Winer – Are you prepared for the upcoming bee season? Do you need to feed? How to prepare for colony growth? What happens when we get these crazy Kansas cold snaps? Joli will give us some guidance on what to expect and how to prepare.

Beelines

By President Cheryl Burkhead



We have many great learning opportunities in February and March. Beginning beekeeping classes will be offered in 3 different locations. If you know someone who would benefit, please encourage them to attend.

February is a good time to repair existing equipment or build new for replacement or expansion. Preparing now will save you headaches down the road. New frames and foundation are always handy to have for that April swarm or to replace old comb. Don't forget to order bee packages or nucs, purchase queens, or plan to produce your own through queen rearing and splits.

There is still time to read a few good books on beekeeping or landscaping for pollinators. Check out our library at the February club meeting. Visit your local nursery or order from the Kansas Forestry Service and make plans to add a few great pollinator plants this season.

It's always an exciting time to see your bees out flying after a cold winter but we aren't out of the woods yet. Make sure to check your colonies on warmer days and help clear entrances as the winter bees die off. Keep a close eye on weight and feed if they are light. Colonies will burn through their food stores twice as fast now as they begin raising brood. First pollens will typically occur in February which will be Silver Maple in my area. The snow may finally melt but I'm hoping for additional moisture as my area is still in a drought.



2025 Meeting Dates:

- Feb 15th, or March 1st, or March 15th - Beginning Beekeeping –pencil in the dates
- Feb 17th, Monthly Meeting at Fairgrounds
- March 17th, Monthly Meeting at Fairgrounds
- April 21st, Monthly Meeting at Fairgrounds



Ol' Bee Gal

Bee-havers know how. Beekeepers know WHY. Knowing and understanding bee behavior and bee biology is the first step to being successful with honey bees. We are beginning our classes for 2025 in mid-February with the 1st of 3 classes. Each class is a repeat of the beginning program. I think Steve and I attended beginning classes for about 3 years before we felt like we had mastered that material. There is so much to learn and figuring out how to fit it all together is more complicated than trying to assemble frames in the dark! If you are a newbie, I hope you'll join us. Details about where and when are in this newsletter.

Another learning and networking opportunity is the Kansas Honey Producers Meeting, March 7-8, 2025. We are meeting in Salina, KS. You can find details about this program on our website: www.kansashoneyproducers.org and the program overview here in the Buzzer. The meeting is offered at the amazingly low cost of \$70 for the 2-day event. That price includes meals! This is made possible through the work done by the association at the Kansas State Fair.

The Kansas Honey Producers (KHPA) is our state association, supporting beekeepers of all abilities and experience levels throughout the state. Some may have the erroneous idea KHPA is just supporting experienced and/or commercial beekeepers. It is not! The program has something for everyone. This year, for the first time, we will have a breakout session for our newest beekeepers. For years, KHPA has recognized groups wishing to add beekeeping to their programs through the awarding of grants. We have given hives and equipment to 4-H, FFA, schools, scouts, community centers, and more. We provide them with mentors and instruction. This year, Julie Cahoj will be offering some special sessions to help them get started on the right foot. Any novice beekeeper will be able to attend as well. (Information and applications for the grant program can be found on our KHPA website, too.)

The most exciting news for the March KHPA meeting is, Dr. Jennifer Tsuruda of Univ of Tennessee, Knoxville will be our keynote speaker! If you have never met Dr. Tsuruda, let me do a brief introduction. She is energetic, extremely knowledgeable, categorically practical, and fun to listen to. She peppers scientific experiments with her own personal revelations and “ah ha” moments. Here is a link to a YouTube video that will introduce her to you. Please watch: <https://www.youtube.com/watch?v=oWt4fRkfJAg> Dr. Tsuruda is UTK's extension specialist in both plant pathology and apiculture. She's published 35 articles and has over 1,000 citations from her fellow colleagues. Most of her work focuses on the importance of pollinators and how to support them in your own environment. She also has some fascinating research on what honey bees do during a solar eclipse. We might not experience another total solar eclipse in N. America until 2044, but inquiring minds want to know. Much of the research at UTK is on breeding honey bees for resistance to Varroa mites. Some of you might remember Dr. Tsuruda from NEKBA's Funday '24. I am extremely pleased that she could find time in her schedule to return to Kansas. She is a treasure!

KHPA along with NEKBA is leading the work to change the laws regarding the sales of honey by small beekeepers. We also work to support legislation that protects all our pollinators. But our most important roll is education. KHPA members provide numerous volunteers to talk to schools, garden clubs, civic groups, kids' organizations and more about the amazing honey bee and all the pollinators of our state. We do the vast majority of our work at the Kansas State Fair, where we talk bees and sell beautiful Kansas honey from our booth in the Pride of Kansas Building. I am glad that is where our booth is located because I truly feel like

KHPA is something that shows the real beauty of our state and I am very proud of the work we do. If you would like to be part of our association, membership is available on our website (\$25/year or lifetime memberships are also available).

Our honey bee world is ever-changing and facing new challenges daily. Our scientists, like Dr. Tsuruda, are working to find ways to protect our bees, our food sources, and our world. I hope you will get involved and join us in the work: Join your local and state association (your dues help bring important information to our state). Attend classes, meeting, conferences, and network with other beekeepers. Share your information with folks from your area and across the state. You can make a difference.

Becky Tipton

SUBSCRIBE TO A MONTHLY BEE MAGAZINE. STAY INFORMED.

[Bee Culture Magazine \(link\)](#)

[American Bee Journal \(link\)](#)

Use the links to subscribe directly...annual subscription rates under \$6 per month for both!

This is fantastic information right at your fingertips. As part of your beekeeping experience, it's important to be up-to-date with the trends in bee biology, honey processing, the industry, and much more!



ASK QUINBY & REMI

Today Joli and Cecil had an opportunity to visit their two 2024 youth scholarship students. Both of their hives are still alive (yay) and they both plan to increase their hive numbers this year. Now is the tricky part, keeping them alive! Remi and Quinby have advice! They took this opportunity to treat these hives with an oxalic vaporization treatment. Bees still

do not have a lot of brood, so a quick treatment can knock a lot of varroa out right now.

Dear Quinby and Remi: On one of these warm days my bees were flying! They are alive and I want to keep them that way. What should I be doing? I would like to split my hive this year, any advice on that too?

Quinby and Remi answer: We recommend, in February, you feed syrup that is 2:1 (8# of sugar to ½ gallon of water). The reason for this is that the bees will use this for food and they won't have to dehumidify it. In March switch to 1:1 syrup (4# of sugar to 1/2 gallon of water). The reason for this change is that this thinner syrup simulates the thin nectar in plants and stimulates brood rearing. You want this so your hive will have a lot of brood and you can make a split.

Know why you are feeding. If your top hive body is still loaded with honey and you do not plan to split your hives, then don't feed. You will make them very strong, and they will swarm. There are four reasons to feed, if bees are hungry, to stimulate brood rearing, to store food for fall, and to get your new hive or colony to produce wax and stimulate growth when starting package bees or nucs.

Just a reminder to get your equipment ready. Do not wait until you get your package or nuc and then put your equipment together and paint your hives!

- Be prepared. Continue to repair and replace equipment.
- Get your queens, nucs and packages ordered
- Get into the habit of attending our monthly meetings. They are held on the 3rd Monday of the month. We want to see you there.
- If you can catch another warm day, do a mite check. See what your levels are. Take action.
- Join us for one of the beginning beekeeping classes.

Save the date! Saturday, June 7th is our Funday. This all-day event is at the Douglas County fairgrounds. As part of Funday this year, we are trying something new. We are calling it a "Deep Dive" Queen Rearing Class. It is a 2 ½ hour queen rearing workshop. Jim Kellie, John Speckman, and Matthew Winstead will be presenting. It will be limited to 25 participants. We want our NEKBA members to have the first opportunity to sign up for it. Note that you must commit to being there the entire time of the workshop, and you must pay your Funday

entry. There will be no additional charge for this class. Until we work out how to sign up, call, text, or email Joli at 913-593-3562 or heartlandhoneyks@gmail.com.



The NEKBA Beeyard

Our open teaching apiary is an opportunity for members to go through beehives with other beekeepers or mentors. We will be scheduling at least 2 sessions a month during the months of April, May, June, July, August and September. The beeyard is located near Lawrence, KS at Pendleton's Country Market, 1446 E 1850 Rd. The Open Teaching Apiary Committee is working on this year's schedule. Check our website for more information and dates and times at www.nekba.org or call/text Joli Winer at 913-593-3562. Opportunities will also be available to go through the hives of Joli Winer and Cecil Sweeney between Gardner and Spring Hill - dates and time to be announced. If you have any questions or wish to be a part of helping at the bee yards, contact Joli at 913-593-3562 or email heartlandhoneyks@gmail.com.

Tips for February

- The bees will get out during these warm spells, you should too and do some quick checks.
- Small jars can be used if you're worried about freezing and big feeders don't have to be completely filled.
- Swarming is a hot topic/word - try to control it, help it happen soon, use it for splits? A lot of directions and ways it will happen this spring planned or unplanned. Some years you end up giving a hive back to nature, take that as a positive and keep moving forward.
- Mud, it's coming, watch for hives shifting/ settling and where you walk and leave your foot wear!
- **Take Care of your Bee Hive if your Bees Die**
- Repair and repaint any equipment that needs it—this is a great time to perform those tasks.
- Take out each frame and brush off the bees, the more bees that you can get out the better it is for your new bees later. Sometimes the bees left on the comb will mold so the more you get off the better.
- Close your equipment up and store it in a cold, unheated area. Any honey can be reused for your new bees. Your already drawn-out comb can also be used for your new bees.
- Renew your club membership for 2025 if you have not done so-

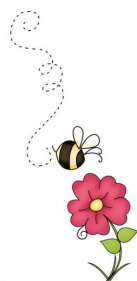


Military/Veterans Apprentices Program

Are you a veteran or on active duty and thought about getting into beekeeping? The Northeast Kansas Beekeepers Association (NEKBA) offers an apprenticeship for veterans and active-duty service members that covers the cost of education, bees, and equipment. The association also provides a mentor to help you with your journey.

Applications must be submitted by October 31. Spots are limited. More information can be found at <http://www.nekba.org/scholarship.html> If you have any questions, please let me know. Buck Bradley 785-248-1005. Babradley82@gmail.com

Buck Bradley, Military/Veteran Appr. Liaison



Honey Plants

For those of you who are new to beekeeping, it's about to get interesting. At least this plant nerd thinks so. As of this writing, I have an Ozark Witch Hazel that has tight buds forming. It is way behind last year's bloom date of February 2nd. Every year can be a little bit different. The Ozark Witch Hazel produces yellow pollen. It is not a significant source of nectar and pollen, but it's an indicator that we are starting the foraging year. The temperature in your area will play a role when you see nectar and pollen available.

For most of us, the first blooms will come from Silver Maple trees. Silver Maples are an excellent source of pollen. They also produce nectar. Last year I recorded seeing my bees bringing in greenish-colored Silver Maple pollen during the second week of February. Native to the central and eastern United States and Canada, it can be easily found in urban and suburban locations. It will be March before we see blooms on Elms, Pussy Willow, and Red Maples. These pollen sources coincide with the queen building up the colony in preparation for a nectar flow.

Is anyone interested in joining other club members in placing an order with the Kansas Forest Service? It's a great opportunity to get inexpensive pollinator plants. A catalog of the trees and shrubs that are available can be found at <https://kansas-forest-service-3749.myshopify.com/>. Most of the offerings are sold in bundles of twenty five and are bareroot. Many of us don't have the space or need for that many but would be happy to split a bundle and the cost. Some of the offerings that would make a nectar and/or pollen source for honey bees are the Eastern Pollinator Bundle; Chokecherry, Black Cherry, Button Bush, Elderberry, Hazelnut, Persimmon, and Redbud. I have not mentioned the shrub Hazelnut before, but it is an excellent source of highly nutritious pollen. It blooms in late February about the same time as Silver Maples. Cheryl Burkhead has offered to pick up the order on March 14, 2025. I will place the order by March 1st. If you are interested, feel free to email me at waterworksparkhoney@gmail.com.

If you haven't done so already, now is the time to sow seeds outdoors for perennials and native flowers. You can sow seeds on top of the snow or use potting soil in seed trays, plastic milk cartons, or whatever is available and that can be covered. Place these outdoors in a protected area from the wind and let Mother Nature do her work. They will germinate when the time is right.

Jo Patrick, Honey Plants Chairman



Kansas Honey Producers Spring Conference.



Join us in Salina for the Kansas Honey Producers Spring Conference, March 7-8, 2025. Our keynote speaker will be Jennifer Tsuruda from the University of Tennessee. She is a fun and enlightening speaker who has spoken at several NEKBA events in the past. Additional guest speakers will talk about topics like European Foul Brood, wax rendering, lotions and potions, herbs and bee health, taxes and record keeping, and the art of creamed honey.

The conference will be held at the Courtyard by Marriot, 3020 Riffel Dr., Salina, KS 67401. Registration includes a Friday night banquet, vendors, a silent auction, and an opportunity to meet and talk with fellow beekeepers across the state.

KHPA is our state-wide beekeeping organization. In addition to hosting semiannual meetings, the organization stays up to date to report on what is happening at the state legislative level as it pertains to beekeeping and honey bees. They distribute a quarterly newsletter and are a large presence at the Kansas State Fair in Hutchinson, KS. They also offer beekeeping scholarships to various groups around Kansas.

To learn more and to register visit <https://www.kansashoneyproducers.org> See you there!

Jo Patrick, Kansas Honey Producers NE KS Area Representative



Northeastern Kansas Beekeepers Assoc. Enrollment for 2025

Please include your selection and contact information below

2025 Year-2 & Bee-Yond Class (Jan.18, Saturday)

Name(s) of those attending:

2025 Bee-ginning Beekeeping Class (Feb.15, Saturday)

Name(s) of those attending:

2025 Bee-ginning Beekeeping Class (Mar.01, Saturday)

Name(s) of those attending:

2025 Bee-ginning Beekeeping Class (Mar.15, Saturday)

Name(s) of those attending:

Class registrations include annual NEKBA membership and delivery of the monthly newsletter via email.

Your contact information:

Name: _____

Address: _____

City, State: _____

Phone: _____

Email: _____

Enrollment at www.nekba.org via PAYPAL

and at <https://nekba.square.site>.

Credit or debit bank cards accepted.

Questions: Kristi Sanderson Email:

sandersonk09@gmail.com Phone: 913-768-4961

Starting year 2- This class is for you. Requeen, making splits, maintaining healthy hives. Anyone having hives less than 5 years will learn valuable information.

~~January 18, 2025, Johnson County
Extension Office – Olathe, KS 11811 S
Sunset Dr, Olathe, KS~~

_____ X \$50 each = _____

Everything you need to know to get started in beekeeping in NE Kansas- BEST PRACTICES for our area. Excellent for newer beekeepers with 3 years of experience or less. Three options!

**1) February 15, 2025, Douglas County
Fairgrounds 2110 Harper St, Lawrence, KS**

X \$50 each = _____

**Or 2) March 1, 2025, Wyandotte County
Extension Office – Kansas City, KS 1216 N
79th St, Kansas City, KS**

X \$50 each = _____

**Or 3) March 15, 2025, Johnson County
Extension Office – Olathe, KS 11811 S
Sunset Dr, Olathe, KS**

X \$50 each = _____

Total Submitted _____

Complete print form & mail check payment to:
NEKBA, Attn Robert Burns, Treasurer
7601 W. 54th Terr. Shawnee Mission, KS 66202



Northeastern Beekeepers Association

Beginning Beekeeping Class

See date and location below

8:30-8:50	Registration
8:50-9:00	Introduction - Kristi Sanderson
9:00-9:20	My first years in beekeeping - Mark & Milisa Suckow
9:25-10:10	Equipment and Acquiring Bees - Kristi Sanderson
10:10-10:25	Break
10:25-11:10	Honey Bee Biology-Cheryl Burkhead basic biology that will aid in making good decisions
11:15-12:00	A Year in the Bee Yard - Becky Tipton overview of what to expect when with your bees
12:00-1:00	Lunch
1:00-1:10	Learning Opportunities with NEKBA - Kristi Sanderson
1:15-1:30	Honey Plants - Jo Patrick important honey plants
1:35-2:05	Hive Location and Hive Inspections - Mathew Brandes hive location & looking inside
2:05-2:20	Break
2:20-3:10	Mites and Diseases - Joli Winer testing and treating for mites and recognizing diseases
3:15-3:45	Extracting Honey - Bob Burns equipment needed
3:45-4:30	Q & A

Topics or presenters subject to chance

Same program different date and location

February 15 Douglas County Fairgrounds Flory building, 2110 Harper St Lawrence, KS 66046

March 1 Wyandotte County Extension Office 1216 N 79th St, Kansas City, KS 66112

March 15 Johnson County Extension Office 11811 S Sunset Dr. Olathe, KS 66061



NEKBA 2025 FUNDAY EXPO

Saturday, June 7th Douglas County Fairgrounds, 2110 Harper Lawrence KS

Speaker Presentations, Swarm Demo, Open Teaching Apiary, Value-Added Talks, Lunch, Snacks & Honey Ice Cream!

Guest Speakers:

Amy Vu University of FL Extension

Dr. Judy Wu-Smart University of Nebraska Extension

Kim Mehalick EAS Master Beekeeper

Any many more!

Saturday Dinner & Program

We will have an optional catered dinner with a guest speaker



**Funday Vendors-
List Available as Vendors
sign up
Beekeepers.com**

Hotel Arrangements

A group rate: The Country Inn and Suites, 2176 E 23rd, Lawrence KS 66046. 785-727-1825

**Group name: Heartland Honey 2025
Group Number:KL89W2**



**QUESTIONS?
Funday: Call Joli
@ 913-593-3562**

**Registration: Call Robert @
913-481-3504**

**Registration fee
\$65.00 members**



\$75.00 non-members



The Kansas Honey Producers' Spring 2025 Conference

March 7-8, 2025

Courtyard by Marriott – 3020 Riffle Dr. – Salina, KS

Call 785-309-1300 to reserve your rooms (mention KHPA)
Speakers and timeline subject to change

Thursday March 6 at 8:00 PM – Executive Committee Meeting (all welcome)

Friday March 7th

8:00 – 9:00 Set up and bring your items for Silent Auction fund raiser
9:00- 9:15 Welcome and Announcements – Becky Tipton, KHPA President
9:15 – 10:00 Responsible Beekeeping – Dr. Jennifer Tsuruda
10:00 – 10:20 Break
10:20 – 11:05 'Creamed Honey' – Brian Withrow
11:05 – 11:20 Break – Visit Vendors
11:20 – 12:05 Peter Fowler PhD Michigan State Univ. – ZOOM European Foulbrood
11:20 – 12:05 Breakout for Scholarship Groups, New Beekeepers in Lobby – Julie Cahoj
12:05 – 1:30 Lunch – visit with the Vendors – bid on Silent Auction Items – Network
1:30 – 2:15 Brian McCornack PhD, KSU Entomology – tba
2:15 – 2:35 Break - Silent Auction ends at 3:35
2:35 – 3:35 Queen Rearing: Tips, Tricks and what is needed to start – Dr. Jennifer Tsuruda
3:35 – 3:50 Steve Fowler – Vaporizer for Mite Treatment
3:50 – Area Regions gather, Network, discuss issues
6:00 Banquet and Dinner (included with registration)

Saturday March 8th

8:00 – 9:00 Set up and bring Silent Auction items
9:00 – 9:15 Welcome and Announcements – Becky Tipton, KHPA President
9:15 – 10:00 Integrated Pest (Varroa) Management – Jennifer Tsuruda PhD
10:00 – 10:20 Break – visit vendors, bid on silent auction items
10:20 – 11:05 Lotions and Potions using Beeswax - Tracy Tucker MD
11:05 – 11:25 Break – visit Vendors Note: Jim Raders with Dadant will leave after lunch
11:25 – 12:15 KHPA Business Meeting
12:15 – 1:30 Lunch (included with registration)
1:30 – 2:15 Taxes and Record Keeping – Mark Wood- KS Farm Management Economist
1:30 – 2:15 Breakout for Scholarship Groups, New Beekeepers in Lobby – Julie Cahoj
2:15 – 2:35 Break – bid on silent auction items
2:35 – 3:20 Preparing beeswax for skincare products – Tracy Tucker MD
3:20 - Open Panel Questions & Answers with experienced beekeepers

NORTHEASTERN KS BEEKEEPERS' ASSOC. 2025 MEMBERSHIP APPLICATION

NAME _____

ADDRESS _____

CITY _____ STATE _____ ZIP+4 _____

PHONE _____ Email Address _____

I would like to receive the newsletter, *The Buzzer*, by email Yes _____ No _____

Membership Northeastern KS Beekeepers per year (July-Dec. \$12.50) \$25.00 _____

Additional family members wanting voting rights \$1.00 per person \$1.00 _____

Additional family member's name _____

(Youth Membership (18 years of age or under) \$12.50 _____

Membership for Kansas Honey Producers Association \$25.00 _____

American Bee Journal (discounted rate through association) 1 year \$29.75 _____

Bee Culture Magazine (or subscribe online at www.BeeCulture.com) 1 year \$34.00 _____

Scholarship / Military/Veteran's Appr. Donation _____

Total _____

Make checks payable to: NEKBA or Northeastern Kansas Beekeepers Assn.

Mail to: Robert Burns, 7601 W 54th Terr., Shawnee Mission, KS 66202 ph. 913-481-3504, rburnshoney@gmail.com

You may join, re-new, register, donate and pay online at www.nekba.org

MARKET PLACE

MENTORING-SWEET PRAIRIE HONEY

Need help with your hives? -Spring inspections, installing packages, making splits, queen evaluation, diagnosis of pests and diseases, mite monitoring and treatment, etc. I can help you with your beekeeping needs! I am a certified master beekeeper with 30+ years of beekeeping experience. I will leave you with a written course of action after our session at your hives. Call or text 913-768-4961 or email Kristi Sanderson at sandersonk09@gmail.com for pricing and appointment times.

BEEKEEPERS.COM

Beekeepers.com (Jordy's Honey Company) in Lenexa, KS. Beekeepers.com is your only local full-service beekeeping store. We carry a full line of Beekeeping Supplies, Protective Clothing, Bottles, Bee Packages, Nucs and Queens. Visit our website Beekeepers.com, to view our entire line of beekeeping supplies. You can also shop in-person at our store in Lenexa. We ship queens directly to YOU! Order at QueenBees.com. Queens available March - October. Our hours are Monday-Friday 9:00-4:00, Saturday 9:00-12:00. You can find our honey at The Overland Park Farmers Market. **Robert Hughes**, 14054 W 107th St, Lenexa, KS 66215, 913-681-5777 or email Info@Beekeepers.com

COTTIN'S HARDWARE & RENTAL

Cottin's stocks a full line of beekeeping equipment year-round including items manufactured by Harvest Lane Honey, Little Giant, and Bug Baffler. Products include hives, supers, frames, foundations, extractors, tools, and protective apparel. We also stock a full line of Home Brewing Mead Making supplies. Located in Lawrence, KS at 1832 Massachusetts Street (South of Dillon's). We are open Monday - Friday 7:30 am - 6:00 pm, Saturday

8:00 am - 5:00 pm, and Sunday 10:00 am - 5:00 pm. You can follow us on Facebook, Instagram and Twitter. Call us at 785-843-2981 or email us at hardware@sunflower.com.

CB'S HONEY

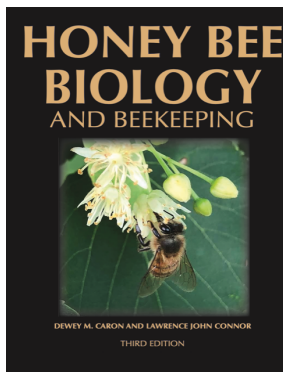
CB's Honey offers pure raw Kansas honey available in 5 gal buckets. Grafted queens and queen cells, and a limited number of nucs/packages. [CB's Honey | Facebook](#). Located just SE of Topeka. 4521 SE 61st Street, Berryton, KS 66409. Call or text Cheryl Burkhead at 785-224-9077 or cherylbhoney@gmail.com

CEDAR RIDGE BEES

5 Frame Nucs for Sale. We are your local Premier Bee Products Dealer specializing in plastic foundation made entirely in the U.S.A. We sell bucket feeders and other bee equipment. Call or text Philip Knaus at 785-581-4216 or contact us at cedarridgebeehives@gmail.com - Check out our bees and products at www.cedarridgebees.com Cedar Ridge Bees, 585 N 500 Rd, Overbrook, KS 66524.

T CREEK BEES AND HONEY – Tecumseh/Berryton, KS

Tecumseh Creek winds its way through the home yard lending its name to the brand. Located between Lawrence and Topeka, T Creek offers 5-frame nucs, online honey sales, custom honey packing, wholesale delivery to the Topeka / Lawrence area, 5-gallon buckets of honey, and drop-shipping wholesale service to rural grocery stores and agritourism destinations. Visit www.tcreekbees.com Email: tcreekbees@gmail.com or find the bees on Facebook. Order 2025 5-frame nucs by visiting the website and completing the nuc order form. Owner: Tim Urich. LLC in the State of Kansas and licensed by Kansas Dept of Ag.



Honey Bee Biology and Beekeeping, Third Edition, Dewey M. Caron and Lawrence John Connor,

\$90 postage included. *This book should stay on the dashboard of every beekeeper's truck. It's that good, and that necessary. Kim Flottum, Bee Culture.* This comprehensive textbook easily replaces many beginner books while adding comprehensive details of bee biology essential to becoming a successful beekeeper and student of the honey bee. First released in 1999, *Honey Bee Biology and Beekeeping* is widely accepted as a major textbook of Apiculture (beekeeping). Beekeepers and bee clubs use it to teach other beekeepers.

Universities use it to teach college students bee biology and beekeeping. It concentrates on the 'why', 'how' and 'when' of beekeeping. It explains bee and beekeeping basics in a manner meaningful to people who lack an extensive background in biology. Yet it is not over-simplified and provides a meaningful source of beekeeping information for the informed beekeeper. The Third Edition has been carefully edited, updated and expanded to 480 pages. New chapters have been added, as have colorful new graphics and photographs. The Glossary has also been expanded. **Wicwas Press LLC Kalamazoo, MI 49001 - www.wicwas.com**

The Association does not endorse nor evaluate the advertisements, products, or services offered in the Buzzer.

Northeastern Kansas Beekeepers Association
Robert Burns, Treasurer
7601 W 54th Terr
Shawnee Mission, KS 66202-1129

Address Service Requested

Meeting

Monday, Feb 17th, 2025 - Douglas Fairgrounds

The Northeastern Kansas Beekeepers' Association

Membership is open to anyone interested in bees or bee culture. Dues are \$25.00 per calendar year (December 31-December 31) for the first in the family joining. Those joining in July or later in the year may pay \$12.50 for ½ year. Additional members of a family wanting voting privileges shall be assessed dues at \$1.00 per year. Youth memberships (18 years of age and younger) are \$12.50 per year. Please submit new memberships and renewals to the treasurer or on-line at www.nekba.org.

The Bee Buzzer is the official publication of the Northeastern Kansas Beekeepers' Association, Inc. and is published monthly. Commercial ads are accepted in the newsletter for a fee; non-commercial ads by paid members are accepted & are free.

The library of the association is free to all members. Books may be checked out at the meetings and kept for a period of 30 days. The bee publications, *The American Bee Journal* and *Bee Culture* can be subscribed to through the treasurer or on-line. The *American Bee Journal* is offered at a discount through the Association only.

The Association meets each month, generally on the third Monday at 7:00 p.m. except during the months of January and July. This is a non-profit organization; elected officers serve without pay. Everyone is invited to attend the meetings. Check *The Bee Buzzer* or website at www.nekba.org each month for the actual date, time, and location. If the weather is bad, call an officer or check the website to find out if the meeting will be held or cancelled.

2024 Officers

President: Cheryl Burkhead , 4521 SE 61st St., Berryton, KS 66409 cbfritz@aol.com	785-224-9077
1st VP (Program Chair): Matt Brandes , 4741 Highway K 68, Wellsville, KS 66092 matthew@n523rv.com	913-706-3087
2nd VP (Librarian): Michael Hewitt , 9221 SE Berryton Rd, Berryton, KS 66409 garlicranch69@gmail.com	785-230-0827
3rd VP (Honey Plants): Jo Patrick , 611 E Sheridan St., Olathe, KS 66061 brian-patrick@sbcglobal.net	913-645-8947
Secretary: Elaine Ellenz , 17650 W 113 th St., Olathe, KS 66061 elaineellenz@gmail.com	913-515-1607
Treasurer: Robert Burns , 7601 W 54 th Terr., Shawnee Mission, KS 66202 rburnshoney@gmail.com	913-481-3504
Youth Scholarship Chair: Jon Chitwood , 27196 W 223 rd St, Spring Hill, KS 66083 jwchitwood@gmail.com	913-738-4585
Military/Veteran Appr. Liaison: Buck Bradley , 11 E 900 Rd., Baldwin City, KS 66006 babradley82@gmail.com	785-248-1005
Editor: Tim Marshall , 4736 Halsey St., Shawnee, KS 66216 flyinmonk@yahoo.com	816-392-6854
Special Events Coordinators:	
(Classes): Kristi Sanderson , 1252 E Frontier Ln., Olathe, KS 66062 sandersonk09@gmail.com	913-768-4961
(Funday): Joli Winer , 19201 S Clare Rd, Spring Hill, KS 66083 heartlandhoneyks@gmail.com	913-593-3851
Webmaster: Robert Burns , 7601 W 54 th Terr., Shawnee Mission, KS 66202 rburnshoney@gmail.com	913-481-3504

Visit on-line at www.nekba.org. Save time. Join, re-new, or register.