



# Florida District FUNshine Times

CEO of EWMA  
Anita Alkire

President of EWMA  
Bruce Beeman

Sr. Vice President of EWMA  
Bob & Nan Shrader

Vice President of Operations  
Don & Rhonda Weed

Region A Directors  
Jim & Sue Jackson

District Directors  
Bill & Cheryl Smith  
fidd2018@gmail.com

Assistant District Directors  
District Rally Hospitality  
Harry & Lynn Anderson  
flaadd@yahoo.com

Assistant District Directors  
Rally Registration Coordinators  
Goodie Sales Coordinators  
Geno & Kathie Jette  
addgeno@yahoo.com

Assistant District Directors  
Motorist Awareness Coordinators  
Fred & Karen Kennedy  
fredandkaren@cox.net

Assistant District Director  
Carl Williams  
carlmwill@yahoo.com

District Safety / Ride Coordinators  
Dominick & Diane DeSiato  
dominickfde@gmail.com

Assistant Safety / Ride Coordinator  
Claudia Vega  
rvega19854@gmail.com

Assistant Safety / Ride Coordinators  
Ed & Jeanette Carr  
gwroadrider@gmail.com

Assistant Safety / Ride Coordinator  
John Cain  
jcain16@gmail.com

District Treasurer  
Pat Van Lengen  
treasurer@gwrraflorida.com

Newsletter Editor  
Carlos Lozano  
carlos@cmlozano.com



**From Your  
Florida District Directors  
Bill and Cheryl Smith  
(FL2-A, FL2-O, FL2-R)**

## Greetings Everyone!

**The Time Is NOW!** Send that EWMA Rendezvous Rally registration RIGHT AWAY! You don't want to miss all of the **FUN – FUN - FUN** at your EWMA Inaugural International Rally! It will be like no other Rally with Entertainment, Dinners, On-Bike Games, Lighted Bike Show, Dance Parties, Guest Speakers, Safety Presentations and plenty of Vendors! Go to [www.ewma-world.org](http://www.ewma-world.org) and click on the 2023 Eagle Wings Rendezvous – 8/31/2023 to get an on-line or paper

registration. Do it right away because **The Time is NOW!**

While you are on the EWMA website, go ahead and sign-in the Member Log-In and set up your profile and choose your Chapter(s), add an Emergency Contact and fill out the Eagle Book information. If you've never signed in, you should have received an email with your User Name and a temporary Password. If you can't find it contact the Director of Technology, Mike Melton at [eaglewings.web@gmail.com](mailto:eaglewings.web@gmail.com) to get a new one.

After the EWMA Rendezvous, Cheryl and I will be at the Georgia District Ride-In, the North Carolina District Ride-In and the Alabama District Rally! That takes us through September, but in October we will be at the Mississippi District rally!

**Here's the BIG NEWS** – after some hard work by Your Florida District Team we have finally secured a location and dates for the **2024 Florida District Gathering of Friends for FUN Rally!** It is March 14<sup>th</sup> – 16<sup>th</sup>, 2024 at the Best Western Gateway Grand located at

*(Continued on page 2)*

(Continued from page 1)

4200 NW 97<sup>th</sup> Boulevard  
Gainesville, FL 32606! We will  
have Great Guided Riding all  
weekend, Vendors, Thursday  
Night Dinner, Presentations,  
Costume Contest, Bingo, Grand  
Prizes, Chapter Baskets, Chapter  
Challenge, Daily 50/50, Grand  
50/25/25, Talent Show, Ice

Cream Social, Guest Speaker,  
First Aid/CPR on Wednesday,  
Area Tours in a Van, On-Bike  
Games, In-Door Games and  
much, much more!

Get Registered Right Away and  
make sure you get your hotel  
room reservations at the Best  
Western ASAP! The information  
is on the Rally Registration Flyer  
in this newsletter and on the

Florida District Website.  
[www.ewma-florida.org](http://www.ewma-florida.org)

We hope to see you at the  
EWMA Events this Fall and at  
the Florida District Rally in the  
Spring!!

Bill and Cheryl Smith  
Florida District Directors  
The **FUN**shine State, where  
**FUN** is #1!



**Harry & Lynn Anderson**  
**Assistant District Directors**  
District Hospitality Coordinators  
(FL1-H, FL2-D)

**Well** here it is July already. I  
hope each of you have a  
wonderful 4th, followed by a  
beautiful summer.

**As** most of you know, some of  
my articles come from various

magazines and Facebook. Also,  
as most of you who write  
articles know, it is hard to come  
up with something new and  
exciting each and every month.  
**So**, that is why I am constantly  
looking for things that "might"  
sound interesting.

**GONNA BE A BEAR:** In this  
life, I am a woman. In my next  
life, I'd like to come back as a  
bear. When you're a bear, you  
hibernate and sleep for six  
months. I could deal with that.  
Before you hibernate, you're  
supposed to eat yourself stupid.  
I could surely deal with that.

**When** you're a bear, you give  
birth to your children (who are  
the size of walnuts) while you're

sleeping, you wake to partially  
grown, cute cuddly cubs. I can  
deal with that.

**If** you're a mama bear,  
everyone knows you mean  
business. You swat anyone who  
bothers your cubs. If your cubs  
get out of control, you can swat  
them too. I can surely deal with  
that. If you're a bear, your mate  
EXPECTS you to wake up  
growling. He EXPECTS that you  
will have hairy legs and excess  
body fat... Yup... gonna be a  
bear.

**Think about this:** You know  
you're getting old when you  
barely do anything all day. But,  
you still need a nap to continue  
to do barely nothing.

***"2024 Florida District Gathering  
of Friends for FUN"***

**Gainesville, FL - March 14-16, 2024!**



Dominick & Diane DeSiato  
**District Safety /  
 Ride Coordinators**

### **REAR BRAKE BENEFITS ON TWO-WHEEL MOTORCYCLES**

**The** front brake system on modern bikes provides much more stopping power than they did in the past. Often only a single finger (not recommended by me) is needed on the front brake lever. Approximately 70% of a motorcycle's stopping power is provided by the front brake when properly applied. The remaining 30% is accomplished by the rear brake. Many factors affect this ratio, such as speed, tire grip, road surface, road gradient, and type of motorcycle. Cruisers and touring bikes with long wheelbases benefit from the rear brake to a greater degree than short-wheelbase motorcycles like sportbikes.

**Hard** braking with the front brake can lighten the rear end so much that it can lessen the advantage of whatever

percentage of braking is available by the rear brake. When you brake hard with the front brake it lightens the contact patch of the rear tire. Therefore, the rear wheel stopping percentage goes down and the potential chance to skid the rear wheel goes up. The heavier the bike and the longer the wheelbase, the greater percentage is of stopping power to the rear wheel.

**So**, if the rear brake provides us less benefit for stopping, when is it more beneficial to use the rear brake only? The answer: U-turns, slow tight turns, and riding in slow moving traffic. Let's start talking about the U-turn. You should be able to make a U-turn without putting a foot down. (Especially on a 900 lb. motorcycle. You risk the chance on injuring an ankle.) Or worse, having to stop, back up, and take another stab at it. I saw this on a recent group ride. Two of the big bikes stopped right in the middle of a tight switch back turn going uphill. Not a good situation for the motorcycles behind them. The approaching bikes either had to stop or go around them. When you are making a U-turn on a multi-laned road with a median, you should be able to make the turn only using the total area of the lane you started in, the width of the median, and the next closest

lane to the median to complete the U-turn. If you venture into any more lanes to complete your U-turn you increase your chances of conflicting with oncoming traffic in the other lanes. During a slow tight turn dragging the rear brake shortens the distance you will be swinging out. If you are driving in slow moving traffic such as at a congested intersection, dragging the rear brake in conjunction with using the throttle and clutch in the friction zone will prevent you from having to put your feet up and down or dragging them on the road.

**Let's** define "using the rear brake" for slow maneuvers. The method I am about to describe is not natural to us and defies normal logic. To illustrate the process let's talk about how you drive your car, a process that is natural to us. So, what I am saying is to get in your car, put the emergency brake on, and drive down the street. Right away you will think, "You are crazy, that is not how you drive a car". You would be right, but, that "is" how you ride a motorcycle if you want to improve your ability to perform slow tight maneuvers. Some motorcycles have a linked braking system. That means that when you

*(Continued on page 4)*



*(Continued from page 3)*

apply the rear brake lever, the system will also apply one side of the front brake. That will make the bike squat down. You will have to apply more throttle and use more friction zone with the clutch to complete the

maneuver. You will definitely hear the engine working against the braking system, but that's what you want to happen. Most motorcycles have a wet clutch which means you will not damage the clutch during this process. If you have a bike with a dry clutch, this process can

still be utilized but you just have to minimize the use of the rear brake against the clutch.

**We** are here to assist you with your training needs.

**Ride Safe!**



**Geno & Kathie Jette**  
**Assistant District Directors**  
 Rally Registration Coordinators  
 Goodie Sales  
 (FL1-F2, FL1-K, FL1-X & FL1-Y)

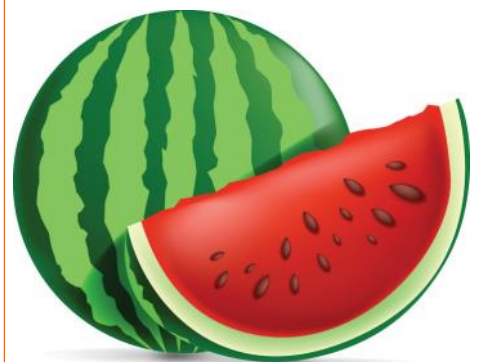
**National Watermelon Month**

**National** Watermelon Month came into existence in 2007 when a resolution was submitted by the senate to the U.S. Congress. The resolution was accepted, and July was designated as the official Watermelon Month. The aim was to raise production and sales of the fruit all over the country. Today, watermelon is a crucial agricultural sector in America as it is produced in 49

states, and is sold and consumed in 50 states. According to the National Agricultural Statistics Service, in 2006 alone, the U.S. produced a whopping 4,200,000,000 pounds of watermelon! Now, that is a lot of watermelons. The National Watermelon Association, which is a membership trade, is another organization that is dedicated to creating positive changes and growth in the industry. It has chapters all over America and Canada.

**Given** its track record on sales and production, we know that watermelon is extremely popular among the masses, but did you know that it has gone through extreme evolution to come to the stage it is in today? That's right, earlier records show that watermelons from the ancient era were not as fleshy or as red as the watermelons today. It was through seasoned farmers' efforts that

watermelons started changing. If we were to start at a particular point, the earliest records show that watermelon may have originated in ancient Egypt in 2000 B.C. In fact, some watermelon seeds were also found in King Tut's tomb. Eventually, watermelon found its way to the Middle East and the rest of Asia. Trading routes and growing civilizations and globalization led to watermelon being taken to China and India during the 7th century. It would take another 10 centuries for watermelon to reach North-, South-, and Central America. The watermelon fruit has had quite a journey all over the planet.



**You make it FUN!**



**John Cain**  
**Assistant District Safety/  
Ride Coordinator**

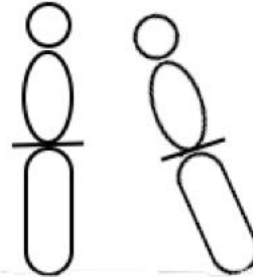
### **Riding the Twisties on My Spyder Trike at the South Carolina District Rally**

I had a great time at the South Carolina (SC) District Rally! My trek from Melbourne, FL included one day's riding to Travelers Rest, SC (about 11 hours), two days of guided riding the SC countryside, and a one-day return. I rode my 2022 Spyder RT-L trike. I had to sell my 2018 Goldwing DCT and my 2010 Goldwing CSC trike because of my replacement-knees range-of-motion issues. This was my first major ride on the Spyder and I sure learned a lot. Maybe you trike riders already know the techniques I'm going to bring up here, but they were new to me. I already had my two-wheel license when I got the Spyder, so I did not have to take the trike course.

**First**, in my opinion, and no surprise to most, trikes are

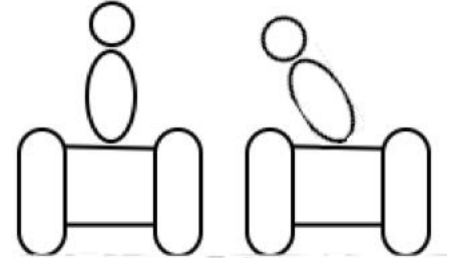
great on the highways and in the parking lots, but not so much **FUN** without the lean in the twisties. One of the first techniques you learn about turns on a two-wheeler is to look where you want to go, e.g., for a left turn, turn your head and eyes to the left (but not your shoulders) and the bike follows to the left (mostly!). The rider balances counter-steering, gyroscopic precession, and lean angle to turn the bike. (It's easier than it sounds!) The result for the two-wheelers is an almost effortless, leaning turn.

Leaning turns are what makes the twisties so much **FUN** for me.



**On** the other hand, there is no leaning the trike itself (except suspension lean which is very small). Without the lean available to turn the bike, the rider physically has to turn and hold the handlebars with arm and shoulder strength in a push-pull action to produce the forces required to turn the trike, i.e., push right, pull left to go left and push left, pull right to go right. Now, of course, you still must/should look into the turn direction on the trike, but that action does little to turn the trike. Instead, and this is the

new lesson I learned (that you probably already knew), was that to assist/tighten the trike turn, you must physically lean your **head and shoulders** into the turn.



**Your** head and shoulders will be off the trike's vertical axis towards the turn direction. I found it really made a difference as I tried and succeeded to keep up with all the two-wheelers on the rides.

**Just** like two-wheelers, trike riders should stay off the front brake handle in turns. Now I know that front-brake-rear-brake interconnectivity depends on the bike/trike model. Some have it and some don't, but ultimately it doesn't matter because the foot brake pedal is the only brake device to use while in turns regardless. It would also be important to know if your trike's rear wheel braking system retained the antiskid feature (assuming it was antiskid before conversion to trike).

**Another** point to consider is that the rear suspension, driven

*(Continued on page 6)*

*(Continued from page 5)*

wheels drive, and stability systems on trikes vary with different models and may be very different from the non-trike versions of the same make and model bikes. Check your trike kit owner's manual or other sources. For example, a Spyder's strong point is that it was designed from the ground up as a front-wheel trike, and it has very capable built-in

electronic brake controllers and stability systems. The same cannot be said for even the best after-market trike kits. Before you try to keep up with the two-wheelers on your trike in the twisties, be familiar with your trike's added and removed equipment and its maneuverability limits. You don't want to discover that your trike lifts a wheel (front or rear) on really tight turns such that you potentially lose control!

**The** Motorcycle Safety Foundation (MSF) MSF 3-Wheel Basic Rider Course (3WBRC) for both rear- and front-wheel trikes is highly recommended (sorry, no sidecars or detachable trike kits). Contact Dominick DeSiato or me if your chapter would like to host a 3WBRC.

Friends for **FUN, Safety** & Riding.



**Your Association needs YOU!**  
**Please register for the inaugural**  
**Eagle Wings Rendezvous**  
**Today!**



Claudia Vega  
**Assistant District Safety /  
 Ride Coordinator**  
 Chapters FL2-A, D, F, G, O, R

***HURRICANE SEASON IS  
 HERE! YAY! MY FAVORITE  
 SEASON – NOT!***

I found this hurricane kit list in my newsletter from the local County library. I thought it was a good list and since Hurricane Season has started it is never too late to get prepared. It's important to prepare in case of an emergency. Let's see what is in this library hurricane kit!

**FOOD & WATER**

- One gallon of water per person / pet per day for 5 days (for drinking, cooking, and bathing)
- Dry cereal

- Canned goods
- Breads, muffins, bagels

**FIRST-AID SUPPLIES**

- Sunscreen
- Thermometer
- Rolls of gauze and / or bandages
- Aspirin or non-aspirin pain reliever – I would add prescription drugs, diabetic meds and don't forget pet meds
- Insect repellent
- Face masks for every family member

**KEEP IN A WATERPROOF CONTAINER & DIGITIZE**

- Bank account numbers
- Family records (birth certificates, etc.)
- Veterinary information
- Printed family and pet photos – (I wouldn't have thought of this, but now I will)
- Will, insurance policies, contracts, deeds, etc.

**COMMON & HEAVY TOOLS**

- Flashlight
- Crowbar
- Extra batteries
- Camping Lantern
- Duct and masking tape

- Hatchet / handsaw

**HELPFUL SUPPLIES**

- Toothpaste and other hygiene products
- Hand sanitizer
- Baby wipes
- Blankets / sleeping bags
- Plastic storage container to hold non-drinking water

**CLEANING & STORAGE**

- Chlorine bleach
- Latex gloves
- Plastic wrap and foil
- Matches and lighters
- Paper plates, disposable cups and plastic utensils

I am sure you can think of a few more items that would be important to you. The important thing is to be prepared.

**Looks** like I will need to take my own advice and get my kit ready.



**The Place for FUN:  
 Eagle Wings Motorcycle Association!**



# FLORIDA DISTRICT HAPPENINGS JULY 2023

Sun	Mon	Tue	Wed	Thu	Fri	Sat
						1 FL1-E2, Ft Walton Beach
	<u>Please verify with an individual Chapters before visiting. Chapters occasionally alter their gathering schedule to accommodate rallies and/or other events.</u>					
2 FL2-A, West Palm Beach	3	4 FL1-Y, Gainesville FL2-D, Melbourne 	5 FL2-R, Ft Lauderdale	6 FL1-X, Orange Park	7	8 FL1-D, Pensacola FL2-F, Punta Gorda
9	10 FL1-K, Palm Coast	11 FL2-H, Wauchula	12 FL1-D2, New Port Richey FL2-O, Stuart	13 FL1-B, Brandon	14	15 FL1-A, Tampa
16	17	18 FL1-F2, Ocala	19 FL1-H Daytona Beach	20 FL2-B2, Sarasota FL1-M, Clearwater	21	22 FL2-G, Ft Myers
 23/30 Happy Parent's Day	24/31	25	26	27	28	29

Check this URL to find particulars for each individual Chapter and their calendars:  
<http://www.ewma-florida.org/chapters.html>



### Upcoming Florida EWMA Events

Aug 31 - Sep 2, 2023	EWMA Rendezvous	Knoxville, TN
Sep 15 - 16, 2023	Georgia District Fall Mountain Ride and Reunion	Dillard, GA
Sep 22 - 23, 2023	North Carolina District Ride	West Jefferson, NC
Sep 28 - 30, 2023	Alabama District Rally	Eufaula, AL
Oct 26 - 28, 2023	Mississippi District Rally	Biloxi, MS
March 14 - 16, 2024	Florida District Gathering of Friends for FUN <i>"FUN with 50's, 60's and 70's TV Shows"</i>	Gainesville, FL

# FUN in Florida is # 1



**EWMA Florida District**

**Bill & Cheryl Smith**  
District Directors

Phone: (561) 445-4270

E-mail: [fdd2018@gmail.com](mailto:fdd2018@gmail.com)

[www.ewma-florida.org](http://www.ewma-florida.org)





# Eagle Wings Rendezvous

## Eagle Wings Motorcycle Association Inaugural Rally

### Aug 31—Sept 2, 2023

### Knoxville, TN Convention Center



Take a Scavenger Hunt ride to Knoxville, TN and join your friends at the Inaugural rally, Eagle Wings Rendezvous! We'll have vendors, FUN, presentations, FUN, guest speakers, FUN, games, FUN, on bike games, FUN, and awesome guided and self-guided rides into the beautiful hills of Tennessee! This is an event you don't want to miss!

**Plan for FUN!!!**

**Daily 50/25/25**

**On Bike Games**

**Commemorative item & Door Prizes**

**Guest Speakers & Presentations**

**Bike & Light Show**

**First Aid/CPR Class**

**Vendors, Including Motorcycle stuff, Bling & Chrome**

**GRAND PRIZE and MYSTERY CASH  
AND  
GRAND 50/25/15/10**

**3 Nights of FUN, FUN, FUN!!!!  
Thursday GRAND OPENING PARTY FUN,  
Dinner and dancing**

**Friday Night Bike and Light Show Vote for  
your favorite and enjoy some ice cream!**

**Saturday Night is Closing  
Ceremonies, Dinner and Dancing**

**\*For up to Date Schedule & more info,  
go to [www. EWMA-World.org](http://www.EWMA-World.org)**

<b>Registration Fees (onsite \$10 more)</b>	<b>Cost</b>	<b>Qty</b>	<b>Total</b>
EWMA Members	\$40	_____	\$ _____
Non Members	\$50	_____	\$ _____
Day Passes-available for purchase on site			
<b>Dinner on Thursday Night</b>	\$20	_____	\$ _____
<b>Dinner on Saturday Night</b>	\$35	_____	\$ _____
<i>First Aid/CPR</i>	\$25	_____	\$ _____
<b>Tickets</b>	<b>Cost</b>	<b>Qty</b>	<b>Total</b>
<b>Grand Prize &amp; Mystery Cash—Books of 5</b>	\$10 X	_____	\$ _____
<b>Grand 50/25/15/10— Books of 5</b>	\$20 X	_____	\$ _____

**GRAND TOTAL IN US DOLLARS ENCLOSED: \$ \_\_\_\_\_**

**See and purchase our Rally shirt on our website in our store.  
Pick them up at rally. Some may be available on-site.**

**All pre-registrations must be received  
by August 1, 2023**

[Make Checks payable to EWMA](#)

Mail completed forms to:

**EWMA  
Patti Oneill  
2125 Meander  
Prescott AZ 86305**

**For further information  
Contact: Patti Oneill  
Email: [ewmacfo@gmail.com](mailto:ewmacfo@gmail.com)  
Phone 408-639-0415**

**\$15.00 fee on all cancellations  
No refunds after Aug 1st 2023**

**Pre-reg only  
USA CC# \_\_\_\_\_**

**EXP \_\_\_\_\_ CVV \_\_\_\_\_**

**Billing Zip Code \_\_\_\_\_  
All countries credit cards will be accepted at rally**

Name: \_\_\_\_\_ EWMA #: \_\_\_\_\_

Name: \_\_\_\_\_ EWMA #: \_\_\_\_\_

Address: \_\_\_\_\_ Reg/District/Chapter: \_\_\_\_\_

City: \_\_\_\_\_ State: \_\_\_\_\_ Zip: \_\_\_\_\_

Phone: \_\_\_\_\_ E-mail \_\_\_\_\_

The undersigned, agree to comply with the ideals governing this event and to hold harmless the EWMA, co-sponsoring organizations and property owners for any loss or injury to self or property in which I/we may become involved, and I/we agree to assume responsibility for any property which I/we knowingly damage. **EWMA reserves the right to refuse entrance to anyone at any time.**

Rider Signature: \_\_\_\_\_ Co-Rider Signature: \_\_\_\_\_



**BW** | Best Western.  
Hotels & Resorts

4200 NW 97th Boulevard  
Gainesville, FL 32606-3742

Rate \$139.00 (including buffet breakfast for 2)  
Reservation call 352-331-3336  
Group Code: EWMA2023



### Raffle to support Safety

- 1<sup>st</sup> Drawing - \$5,000 Cash
- 2<sup>nd</sup> Drawing - \$ 500 Cash
- 3<sup>rd</sup> Drawing - \$ 250 Cash

### GOLD SPONSOR



Visit  
**GAINESVILLE**  
Alachua County, FL

**PLATINUM SPONSOR**  
Funded in part by Visit Gainesville,  
Alachua County

Need not be present to win  
Proceeds support EWMA Florida District Safety Program



**EAGLE WINGS MOTORCYCLE ASSOCIATION**



## Florida District Gathering of Friends for FUN

# FUN WITH 50'S 60'S 70'S TV SHOWS





**Florida District Rally (March 14 -16, 2024)**

Opens daily at 9:00am

**Florida District Directors**

Bill & Cheryl Smith  
(561) 445-4270

[fdd2018@gmail.com](mailto:fdd2018@gmail.com)

**FIRST AID/CPR CLASS OFFERED**

Wednesday 03-13-2024 – 11am – 5pm  
Limit 20 people Must Be Fully Registered

FL EWMA MEMBERS \$25. (returned upon completion)  
NON-FLORIDA EWMA MEMBERS \$35.00

SEPARATE CHECKS NEEDED PAYABLE TO FL DISTRICT  
Contact Claudia Vega for availability  
561-722-0632 [rvega19854@gmail.com](mailto:rvega19854@gmail.com)

Preregistrations must be postmarked by March 1, 2024

No refunds after February 25, 2024.  
After March 1<sup>st</sup> Registration is \$5.00 higher

\$15 Day Passes will be sold onsite and are good for all events the day of purchase **except Thursday night dinner**

**Submit Registration Forms to:**

**Geno & Kathie Jette**  
114 Canis Dr E  
Orange Park, FL 32073

Make check or money order (US dollars only)  
payable to Florida District  
If you would like registration confirmation, please  
ensure you provide an email address

**Guided rides on Friday & Saturday**

Register by **December 1<sup>st</sup>, 2023** for entry into  
Early Bird drawing to be awarded to 1 lucky  
winner at Closing Ceremonies!

Pre-Order Shirts for entry into a drawing for a  
prize to be awarded to 1 lucky winner at Closing  
Ceremonies

See website for latest information  
<http://www.ewma-florida.org/rally.html>

Riders Name \_\_\_\_\_ EWMA Member # \_\_\_\_\_

Riders or Co-Riders Name (circle one) \_\_\_\_\_ EWMA Member # \_\_\_\_\_

Street Address, City, State & Zip Code \_\_\_\_\_

Phone # \_\_\_\_\_

Email Address \_\_\_\_\_

Chapter \_\_\_\_\_

Chapter Position \_\_\_\_\_

District or Team EWMA Position \_\_\_\_\_

I/we agree to hold harmless Florida District, co-sponsoring organizations and any property owners for any loss or injury to self or property in which I/we may become involved because of participation in this rally. I/we have read this waiver and acknowledge with signature(s) below:

Signature \_\_\_\_\_

Signature \_\_\_\_\_

Date: \_\_\_\_\_ Is this your first-time attending the Florida Rally? Yes No

Member Registration	\$35	x	_____	=	_____
Non-Member Registration	\$40	x	_____	=	_____
Under 12 (Dinner on Thursday extra, See below)	Free	x	_____	=	_____
<b>Sit Down Dinner - Thursday Night</b>	<b>\$30</b>	x	_____	=	_____

\*\*\* Fully registered attendees only \*\*\*

**Dinner choices - Circle One for each attendee:**

Pineapple Seared Chicken, Seared Mahi Mahi, Manacotti w/  
red sauce or spinach cream sauce (pick one)

**Ticket Sales**

\$5,000 Raffle (Book of 10)	\$10	x	_____	=	_____
Daily 50 / 50 Thursday (Strip of 10)	\$5	x	_____	=	_____
Daily 50 / 50 Friday (Strip of 10)	\$5	x	_____	=	_____
Grand 50 / 25 / 25 (Strip of 10)	\$5	x	_____	=	_____
Grand Prize (Strip of 10)	\$5	x	_____	=	_____

**PRE-ORDER ONLY SHIRT SALES**

Polo Shirt	S	M	L	XL	\$22	x	_____	=	_____
Polo Shirt	XXL	XXXL	XXXXL		\$25	x	_____	=	_____
T-Shirt	S	M	L	XL	\$18	x	_____	=	_____
T-Shirt	XXL	XXXL	XXXXL		\$20	x	_____	=	_____
Long Sleeve	S	M	L	XL	\$20	x	_____	=	_____
Long Sleeve	XXL	XXXL	XXXXL		\$22	x	_____	=	_____

**TOTAL ENCLOSED (US Dollars Only) \$ \_\_\_\_\_**

**RALLY SHIRTS NOT AVAILABLE ON SITE—PRE-ORDER ONLY**